

FANTASIE für Flöte

und
Klavier

1999

Adolf Scherbaum

(N.B.) Klavier
kann auch
entfremdet werden -

F 153 Scherbaum 1492

MUSIKSAMMLUNG
ÖSTERR.
NATIONALBIBLIOTHEK

frei) (Flöte)

(d) p =

f

6

Pedal (Klavier)

mf

1

(d) f =

pp

8

Lento

Pedal

ff

2

Lento

p =

pp

mf

3

Solo (frei)

Lento pp

f =

4

erregt

ff

3

Lunga

ppp

G.P.

5

accel.

2

Handwritten notes at the top of the page, possibly indicating the piece or composer.

langsame 4/4 Beginn (Accel. + Cresc.)

Handwritten musical score for the first system, featuring a grand staff with treble and bass clefs. The music includes various notes, rests, and dynamic markings such as *pp* and *p*. A large arrow above the staff indicates an acceleration. A measure rest is marked with a '6' above it.

Handwritten musical score for the second system, continuing the grand staff notation. It features complex rhythmic patterns and dynamic markings including *mf* and *f*. The notation includes many slurs and accents.

Handwritten musical score for the third system, featuring a grand staff. The music is marked with *ff* and includes an *accel.* instruction with a large arrow. The notation is dense with notes and rests.

Handwritten musical score for the fourth system, showing a grand staff with mostly rests and some notes.

Handwritten musical score for the first system, measures 9 and 10. The score is written for Flute and Piano.

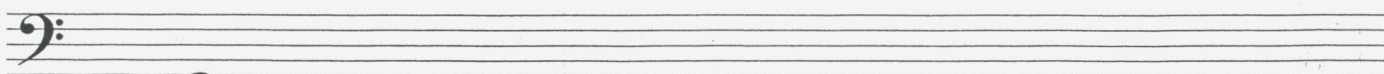
Measure 9: Flute part has a melodic line with a fermata. Piano accompaniment features chords with accents (^) and slurs. A dynamic marking of *mf* is circled.

Measure 10: Flute part continues with a melodic line. Piano accompaniment includes chords with accents (^) and slurs. A dynamic marking of *ff* is circled. The tempo marking *Allegro* and the instruction *accel.* are present.

Handwritten musical score for the second system, measures 11 and 12. The score is written for Flute and Piano.

Measure 11: Flute part has a melodic line with a fermata. Piano accompaniment features chords with accents (^) and slurs. A dynamic marking of *ff* is present. The instruction *Prestissimo* is written in a box with an arrow pointing right.

Measure 12: Flute part has a melodic line with a fermata. Piano accompaniment features chords with accents (^) and slurs. A dynamic marking of *ff* is present. The instruction *Pedal* is written with an arrow pointing left.



Prestissimo

12

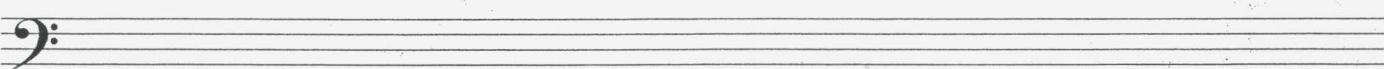
2/2

pp = subito pp

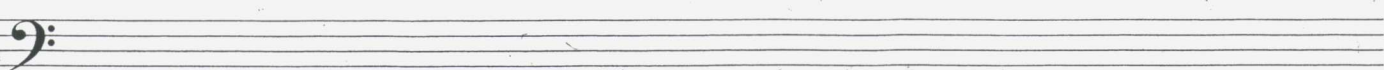
13

mf

f



ff



Handwritten musical score for measures 15 and 16. The score is written in treble and bass clefs. Measure 15 features complex chordal textures with various accidentals (flats and sharps) and dynamic markings such as $\hat{>}$ and \wedge . Measure 16 includes a dynamic marking of mf (circled) and a circled f marking. The notation includes stems, beams, and various articulation marks.

Handwritten musical score for measure 17. The score is written in treble and bass clefs. Measure 17 features a large, dense, wavy texture in the lower register, possibly representing a pedal point or a complex rhythmic pattern. The notation includes stems, beams, and various articulation marks. A circled f marking is present. The measure ends with a double bar line and a fermata.

frei)

FLÜTE

KLAVIER

Pedal

p = *fp* = *f*

6

18

8

lunga

f = *pp*

Pedal

19

Lento

p =

mf

pp

20

Solo

frei)

Lento

pp

21

erregt

lunga

ppp

G.P.

22

accel.

Presto

Handwritten musical score for Flute and Piano, measures 23-26. The score is written in G major and 2/4 time. It features a flute part and a piano accompaniment. The piano part includes a prominent bass line with eighth notes and chords. The flute part has various melodic lines, including a rapid sixteenth-note passage in measure 25. Dynamics range from *pp* to *ff*. The score is marked with measure numbers 23, 24, 25, and 26.

Handwritten musical score for measures 27-28. The system consists of three staves. The top staff is in treble clef, the middle in alto clef, and the bottom in bass clef. Measure 27 shows a melodic line in the treble and bass clefs, with a whole rest in the alto clef. Measure 28 continues the melodic development with various intervals and rests.

Handwritten musical score for measures 28-29. The system consists of three staves. The top staff is in treble clef, the middle in alto clef, and the bottom in bass clef. Measure 28 shows a melodic line in the treble and bass clefs, with a whole rest in the alto clef. Measure 29 continues the melodic development with various intervals and rests.

Handwritten musical score for measures 29-30. The system consists of three staves. The top staff is in treble clef, the middle in alto clef, and the bottom in bass clef. Measure 29 shows a melodic line in the treble and bass clefs, with a whole rest in the alto clef. Measure 30 continues the melodic development with various intervals and rests.

Handwritten musical score for measures 30-31. The system consists of three staves. The top staff is in treble clef, the middle in alto clef, and the bottom in bass clef. Measure 30 shows a melodic line in the treble and bass clefs, with a whole rest in the alto clef. Measure 31 continues the melodic development with various intervals and rests.

Tempo (4/4) Moderato

31

subito (Mod.)

35

ffp

p

a

36

fp=

auf 3

3

Pedal <

p

f >

37

p

a

p

fp <

pp =

p

38

bb

p

fp <

pp =

p

Pedal <

♩ sehr ruhig fließend

Handwritten musical score for measures 39-40. The system includes a bass clef staff, a treble clef staff with a *pp* dynamic marking, and a grand staff with a circled *Pedal* marking and the instruction *bis 41*. The music features complex chromatic passages and slurs.

40

Handwritten musical score for measures 40-41. The system includes a treble clef staff with a circled *P* marking, a grand staff, and various musical notations including slurs and dynamics.

41

Handwritten musical score for measures 41-42. The system includes a treble clef staff with a *mf* dynamic marking, a grand staff, and various musical notations including slurs and dynamics.

42

Handwritten musical score for measures 42-43. The system includes a treble clef staff with a *pp* dynamic marking, a grand staff, and various musical notations including slurs and dynamics. The piece concludes with an *attaca* instruction and an arrow pointing right.

Prestissimo

CODA



Handwritten musical score for measures 43-44. The system includes a grand staff with treble and bass clefs. The right hand (treble clef) features a melodic line with slurs and accents. The left hand (bass clef) provides harmonic support with chords and moving lines. Dynamic markings include *pp* and *p*. The key signature has one sharp (F#).

Handwritten musical score for measures 44-45. The system continues the grand staff notation. The right hand has a more active melodic line with slurs and accents. The left hand continues with harmonic accompaniment. Dynamic markings include *mf* and *f*. The key signature remains one sharp.

Handwritten musical score for measures 45-46. The system continues the grand staff notation. The right hand features a melodic line with slurs and accents. The left hand provides harmonic support. Dynamic markings include *ff*. The key signature remains one sharp.

46

Handwritten musical score for measures 46-47, measures 1-3. The score is written for Flute and Piano. Measure 1 shows a complex chord structure with accidentals (b, #) and a fermata. Measure 2 features a glissando in the piano part. Measure 3 continues the piano part with a glissando and a fermata. Dynamics include *mf* and *ff*.

47

Handwritten musical score for measures 46-47, measures 4-6. The score continues from the previous system. Measure 4 shows a complex chord structure. Measure 5 features a glissando in the piano part. Measure 6 continues the piano part with a glissando and a fermata. Dynamics include *mf* and *ff*.

48

Handwritten musical score for measures 48-49, measures 1-2. The score continues from the previous system. Measure 1 shows a complex chord structure. Measure 2 features a glissando in the piano part. Dynamics include *ff* and *Pedal*.

Handwritten musical score for measures 4 and 5. The system includes three staves: a top staff with a treble clef and a circled measure number '4', and two bottom staves with bass clefs. The notation features complex rhythmic patterns, including sixteenth and thirty-second notes, and various articulation marks such as accents (^) and slurs. The key signature is indicated by several sharps (#).

Handwritten musical score for measures 6 and 7. The system includes three staves: a top staff with a treble clef and a circled measure number '5', and two bottom staves with bass clefs. The notation includes slurs and accents. A circled annotation 'Flatterz.' is present in the first measure of the top staff. In the fourth measure of the top staff, there is a circled annotation '(ohne Flatterz.)'. The bottom staves show simple harmonic accompaniment with accents.

Handwritten musical score for measure 51. The system includes three staves: a top staff with a treble clef and a circled measure number '51', and two bottom staves with bass clefs. The notation includes a large slur over the top staff and various articulation marks. Annotations include 'Cil' with an upward-pointing arrow, 'Lunga' with a downward-pointing arrow, and 'hart' with a downward-pointing arrow. A signature 'Adolf Scherbaum' and the year '1999' are written in the bottom right corner.