

VORSPIEL

und

TOCCATA

für

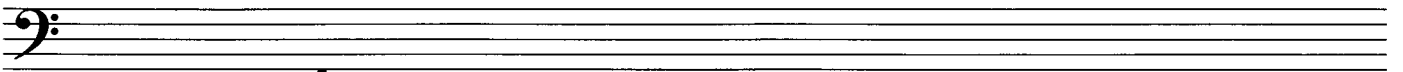
Orgel

Dez. 2000

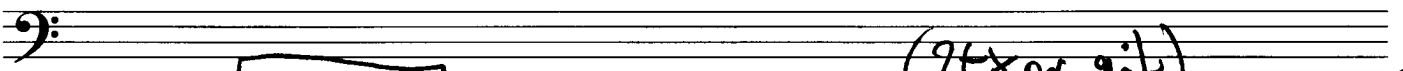
F 153 Scherbaum 1493

MUSIKSAMMLUNG
ÖSTERR.
NATIONALBIBLIOTHEK

VORSPIEL



appassionata (frei) rubato



(2te x gr. rit.)

*fast
attaca*

Presto Tocatta

TUMRO

Handwritten musical notation for the first system. The treble clef staff contains notes with various accidentals (flats and naturals) and rests. The bass clef staff features a continuous melodic line with eighth and sixteenth notes.

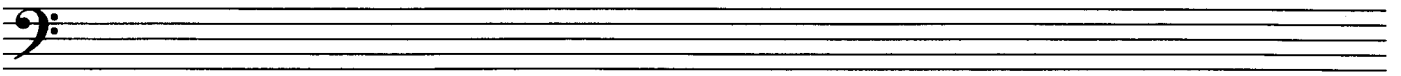
Handwritten musical notation for the second system. A circled 'f' dynamic marking is present in the treble clef staff. The treble clef staff shows complex chordal structures with multiple notes and accidentals. The bass clef staff continues the melodic line.

Handwritten musical notation for the third system. Both the treble and bass clef staves show intricate melodic lines with many notes and accidentals.

Handwritten musical notation for the fourth system. A circled 'ff' dynamic marking is present in the treble clef staff. The treble clef staff features complex chordal structures with multiple notes and accidentals. The bass clef staff continues the melodic line.

Handwritten musical notation for the fifth system. The treble clef staff shows complex chordal structures with multiple notes and accidentals. The bass clef staff continues the melodic line.

Handwritten musical notation for the sixth system, concluding the piece with a double bar line. The treble clef staff shows complex chordal structures. The bass clef staff continues the melodic line.



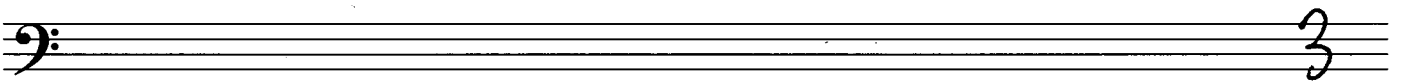
Handwritten musical notation for the first system. The treble clef staff contains a melodic line with a slur over the first four measures and various accidentals (flats and naturals). The bass clef staff contains a rhythmic accompaniment with eighth notes and rests.

Handwritten musical notation for the second system. The treble clef staff features a complex melodic line with many accidentals and a slur. The bass clef staff continues the rhythmic accompaniment.

Handwritten musical notation for the third system. The treble clef staff has a melodic line with a slur and various accidentals. The bass clef staff continues the rhythmic accompaniment.

Handwritten musical notation for the fourth system. The treble clef staff contains a melodic line with a slur and many accidentals. The bass clef staff continues the rhythmic accompaniment.

Handwritten musical notation for the fifth system. The treble clef staff has a melodic line with a slur and various accidentals. The bass clef staff continues the rhythmic accompaniment.



Handwritten musical score for organ, consisting of six systems of two staves each. The notation includes various notes, rests, and ornaments, with some notes marked with accents (^) and slurs. The piece concludes with a large number '4' at the bottom right.

etwas breiter

Handwritten musical notation for the first system, featuring treble and bass staves with notes and rests.

Handwritten musical notation for the second system, featuring treble and bass staves with notes and rests.

Handwritten musical notation for the third system, featuring treble, bass, and grand staff notation with notes and rests.

immer breiter werden

groß. rit.

Handwritten musical notation for the fourth system, featuring treble and bass staves with notes and rests.

Maestoso

Handwritten musical notation for the first system. It consists of three staves. The top staff has a treble clef and contains several notes with accidentals (sharps and flats) and dynamic markings like *mf*. The middle staff has a treble clef and contains notes with accidentals and dynamic markings like *mf*. The bottom staff has a bass clef and contains notes with accidentals and dynamic markings like *mf*.

Handwritten musical notation for the second system. It consists of three staves. The top staff has a treble clef and contains notes with accidentals and dynamic markings like *mf*. The middle staff has a treble clef and contains notes with accidentals and dynamic markings like *mf*. The bottom staff has a bass clef and contains notes with accidentals and dynamic markings like *mf*. The word *breit* is written above the middle staff, and *Sehr* is written below the middle staff.

gr. mit **langer**

Handwritten musical notation for the third system. It consists of three staves. The top staff has a treble clef and contains notes with accidentals and dynamic markings like *mf*. The middle staff has a treble clef and contains notes with accidentals and dynamic markings like *mf*. The bottom staff has a bass clef and contains notes with accidentals and dynamic markings like *mf*. The system concludes with a double bar line and a wavy line indicating the end of the piece.

Fine