

Notenheft

Satz ①

(1) Allegro con brio

Handwritten musical notation for the first system, measures 1-4. The notation is on a grand staff (treble and bass clefs). Measure 1 contains a treble clef, a key signature of one sharp (F#), and a 2/4 time signature. The first staff has a quarter note G4, a quarter note A4, and a quarter note B4. The second staff has a quarter note G2, a quarter note A2, and a quarter note B2. Above the first staff, there are three accents (^) over the notes G4, A4, and B4. Below the first staff, there are two circled plus signs (+). Measures 2, 3, and 4 contain rests in both staves.

Handwritten musical notation for the second system, measures 5-8. The notation is on a grand staff. Measure 5 contains a treble clef, a key signature of one sharp (F#), and a 2/4 time signature. The first staff has a quarter note G4, a quarter note A4, and a quarter note B4. The second staff has a quarter note G2, a quarter note A2, and a quarter note B2. Above the first staff, there are three accents (^) over the notes G4, A4, and B4. Measures 6, 7, and 8 contain rests in both staves.

Handwritten musical notation for the third system, measures 9-12. The notation is on a grand staff. Measure 9 contains a treble clef, a key signature of one sharp (F#), and a 2/4 time signature. The first staff has a quarter note G4, a quarter note A4, and a quarter note B4. The second staff has a quarter note G2, a quarter note A2, and a quarter note B2. Above the first staff, there are two accents (^) over the notes G4 and A4. Measures 10, 11, and 12 contain rests in both staves.

Handwritten musical notation for the fourth system, measures 13-16. The notation is on a grand staff. Measure 13 contains a treble clef, a key signature of one sharp (F#), and a 2/4 time signature. The first staff has a quarter note G4, a quarter note A4, and a quarter note B4. The second staff has a quarter note G2, a quarter note A2, and a quarter note B2. Above the first staff, there are two accents (^) over the notes G4 and A4. Measures 14, 15, and 16 contain rests in both staves.

Handwritten musical notation for the first system. The treble staff contains a melodic line with eighth notes and chords, marked with accents (^) above the first three measures. The bass staff contains a bass line with chords, marked with a plus sign (+) below the first four measures.

Handwritten musical notation for the second system. The treble staff contains a melodic line with eighth notes and chords, marked with accents (^) above the first four measures. The bass staff contains a bass line with chords, marked with a plus sign (+) below the first four measures.

Handwritten musical notation for the third system. The treble staff contains a melodic line with chords, marked with a plus sign (+) below the first four measures. The bass staff contains a bass line with chords, marked with a plus sign (+) below the first four measures.

Handwritten musical notation for the fourth system. The treble staff contains a melodic line with eighth notes and chords, marked with accents (^) above the first four measures. The bass staff contains a bass line with chords, marked with a plus sign (+) below the first four measures.

Handwritten musical notation for the first system. It consists of a grand staff with two staves. A long slur is drawn across the top of the page, starting from the first staff and ending at the second staff. The first staff contains several notes, some with accidentals, and a circled 'p' at the end. The second staff contains notes with accidentals and a circled 'p' at the end.

^ ^ ^ *mezzo* ~~forte~~

Handwritten musical notation for the second system. It consists of a grand staff with two staves. The first measure contains notes with accidentals and a circled 'p'. The second staff has notes with accidentals and a circled 'p' at the beginning.

^ ^ ^

Handwritten musical notation for the third system. It consists of a grand staff with two staves. The first measure contains notes with accidentals and a circled 'p'. The second staff has notes with accidentals.

^ ^ ^

Handwritten musical notation for the fourth system. It consists of a grand staff with two staves. The first measure contains notes with accidentals and a circled 'p'. The second staff has notes with accidentals.

Handwritten musical notation for the first system. The treble staff contains three chords with upward accents (^) above them, followed by three measures with diagonal slashes. The bass staff contains a simple melodic line of four quarter notes, followed by three measures with diagonal slashes.

Handwritten musical notation for the second system. The treble staff contains a sequence of chords with upward accents (^) and a slur over the first two measures, followed by three measures with diagonal slashes. The bass staff contains a sequence of chords with upward accents (^) and a slur over the first two measures, followed by three measures with diagonal slashes.

Handwritten musical notation for the third system. The treble staff contains a sequence of chords with upward accents (^) and a slur over the first two measures, followed by three measures with diagonal slashes. The bass staff contains a sequence of chords with upward accents (^) and a slur over the first two measures, followed by three measures with diagonal slashes.

Handwritten musical notation for the fourth system. The treble staff contains a sequence of chords with upward accents (^) and a slur over the first two measures, followed by three measures with diagonal slashes. The bass staff contains a sequence of chords with upward accents (^) and a slur over the first two measures, followed by three measures with diagonal slashes.

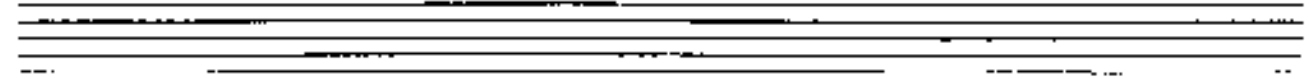
Handwritten musical score system 1. The system consists of two staves. The upper staff is in treble clef and contains several chords with accidentals (flats and naturals) and some notes. The lower staff is in bass clef and contains a few notes and rests. There are some handwritten annotations above the first few notes of the upper staff.

Handwritten musical score system 2. The system consists of two staves. The upper staff is in treble clef and contains chords and notes. The lower staff is in bass clef and contains a series of notes with stems. There are circled markings in both staves, possibly indicating specific notes or chords.

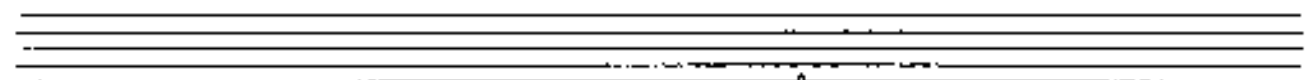
sempre crescendo

Handwritten musical score system 3. The system consists of two staves. The upper staff is in treble clef and contains notes with stems and some accidentals. The lower staff is in bass clef and contains notes with stems. There are circled markings in the upper staff.

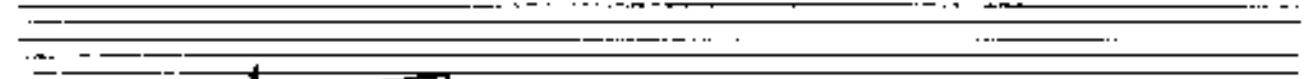
Handwritten musical score system 4. The system consists of two staves. The upper staff is in treble clef and contains notes with stems and some accidentals. The lower staff is in bass clef and contains notes with stems. There are some handwritten annotations above the first few notes of the upper staff.



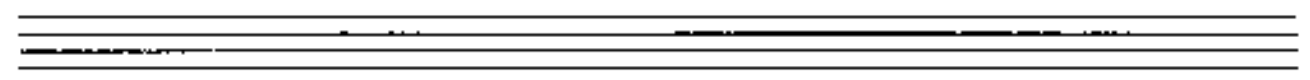
Handwritten musical notation on a grand staff. The treble clef has a circled '4' and a sharp sign. The bass clef has a circled '9'. The notation includes notes, rests, and slurs.



Handwritten musical notation on a grand staff. The treble clef has a circled '9'. The bass clef has a circled '9'. The notation includes notes, rests, and slurs.



Handwritten musical notation on a grand staff. The treble clef has a circled '7'. The bass clef has a circled '9'. The notation includes notes, rests, and slurs.



Handwritten musical notation on a grand staff. The treble clef has a circled '7'. The bass clef has a circled '9'. The notation includes notes, rests, and slurs.

Handwritten musical notation for the first system. The system consists of two staves. The first measure contains a complex chord with a fermata above it. The second measure contains a single note with a fermata. The rest of the system is marked with diagonal lines.

Handwritten musical notation for the second system. The system consists of two staves. The first measure contains a complex chord with a fermata above it. The second measure contains a single note with a fermata. The rest of the system is marked with diagonal lines.

Handwritten musical notation for the third system. The system consists of two staves. The first measure contains a complex chord with a fermata above it. The second measure contains a single note with a fermata. The rest of the system is marked with diagonal lines.

Handwritten musical notation for the fourth system. The system consists of two staves. The first measure contains a complex chord with a fermata above it. The second measure contains a single note with a fermata. The rest of the system is marked with diagonal lines.

Handwritten musical notation for the first system. The system consists of two staves. The top staff is in treble clef, and the bottom staff is in bass clef. The key signature has one flat (B-flat), and the time signature is 3/4. The first measure contains a melodic line with a slur and an accent, and a bass line with four chords. The following three measures are marked with diagonal slashes in both staves.

Handwritten musical notation for the second system. The system consists of two staves. The top staff is in treble clef, and the bottom staff is in bass clef. The key signature has one flat (B-flat), and the time signature is 3/4. The first measure contains a melodic line with a slur and an accent, and a bass line with four chords. The following three measures are marked with diagonal slashes in both staves.

Handwritten musical notation for the third system. The system consists of two staves. The top staff is in treble clef, and the bottom staff is in bass clef. The key signature has one flat (B-flat), and the time signature is 3/4. The first measure contains a melodic line with a slur and an accent, and a bass line with four chords. The following three measures are marked with diagonal slashes in both staves.

Handwritten musical notation for the fourth system. The system consists of two staves. The top staff is in treble clef, and the bottom staff is in bass clef. The key signature has one flat (B-flat), and the time signature is 3/4. The first measure contains a melodic line with a slur and an accent, and a bass line with four chords. The following three measures are marked with diagonal slashes in both staves.

Handwritten musical notation for the first system. The treble clef is on the top staff. A circled sharp sign (#) is written on the first staff. The notation includes notes with slurs and accents, and some notes are marked with numbers like 1, 2, 110, 8, 60, 60, 10.

Handwritten musical notation for the second system. The treble clef is on the top staff. A circled P is written on the first staff. The notation includes notes with slurs and accents.

sempre crescendo

Handwritten musical notation for the third system. The treble clef is on the top staff. The notation includes notes with slurs and accents.

Handwritten musical notation for the fourth system. The treble clef is on the top staff. The notation includes notes with slurs and accents.

Handwritten musical notation for the first system. The treble clef staff contains a sequence of notes with slurs and accents. The bass clef staff contains a sequence of notes with slurs and accents. The system concludes with two measures of rests.

Handwritten musical notation for the second system. The treble clef staff contains a sequence of notes with slurs and accents. The bass clef staff contains a sequence of notes with slurs and accents. The system concludes with two measures of rests.

Handwritten musical notation for the third system. The treble clef staff contains a sequence of notes with slurs and accents. The bass clef staff contains a sequence of notes with slurs and accents. The system concludes with two measures of rests.

Handwritten musical notation for the fourth system. The treble clef staff contains a sequence of notes with slurs and accents. The bass clef staff contains a sequence of notes with slurs and accents. The system concludes with two measures of rests.

Langsam

Handwritten musical score for the first system. The tempo is marked *Langsam*. The music is in 4/4 time. The right hand has a melodic line starting with a slur and an accent, followed by a series of notes. The left hand has a bass line with a circled *p* dynamic marking and several chords. There are some handwritten annotations like arrows and 'x' marks.

(poco rit)

Handwritten musical score for the second system. The tempo is marked *(poco rit)*. The music continues with a melodic line in the right hand and chords in the left hand. There is a circled *p* dynamic marking in the left hand.

trist

Handwritten musical score for the third system. The tempo is marked *trist*. The music features a melodic line in the right hand with a slur and an accent, and chords in the left hand. There is a circled *ff* dynamic marking in the left hand.

Handwritten musical score for the fourth system. The music continues with a melodic line in the right hand and chords in the left hand. There are several handwritten annotations like arrows and 'x' marks.

gut + olin

rubato

accel.

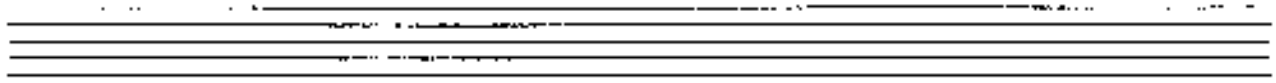
quasi

gut + olin

rit. al

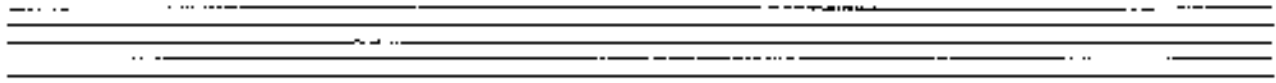
Satz 2

Violin

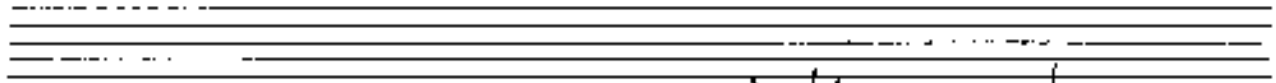


chess.

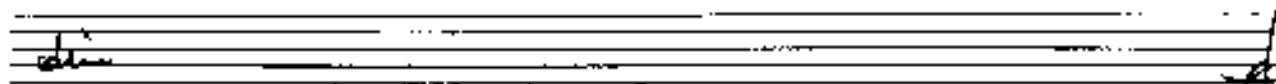
Handwritten musical notation for the first system, featuring a treble and bass clef with various notes and rests.



Handwritten musical notation for the second system, including a treble clef, notes, and rests.



Handwritten musical notation for the third system, showing a treble clef, notes, and rests.



Handwritten musical notation for the fourth system, featuring a treble clef, notes, and rests.

Handwritten musical notation for the first system. The treble clef staff contains a melodic line with eighth and sixteenth notes, some with accents. The bass clef staff contains a bass line with a double bar line and a sharp sign above it. A circled '1' and an equals sign are written in the first measure.

Handwritten musical notation for the second system. The treble clef staff has a melodic line with a circled '1' and a sharp sign above it. The bass clef staff has a bass line with a sharp sign above it.

Handwritten musical notation for the third system. The treble clef staff has a melodic line with a circled '1' and a sharp sign above it. The bass clef staff has a bass line with a sharp sign above it.

Handwritten musical notation for the fourth system. The treble clef staff has a melodic line with a circled '1' and a sharp sign above it. The bass clef staff has a bass line with a sharp sign above it.

Handwritten musical score for the first system. The treble staff contains a series of notes with stems pointing down, followed by a more complex rhythmic passage with stems pointing up. The bass staff contains a series of notes with stems pointing up. A circled key signature of one sharp (F#) is present at the beginning. There are various annotations, including a circled '1' and a circled '2'.

Handwritten musical score for the second system. The treble staff contains a series of notes with stems pointing down, followed by a more complex rhythmic passage with stems pointing up. The bass staff contains a series of notes with stems pointing up. A circled '2' is present above the treble staff. There are various annotations, including a circled '1' and a circled '2'.

Handwritten musical score for the third system. The treble staff contains a series of notes with stems pointing down, followed by a more complex rhythmic passage with stems pointing up. The bass staff contains a series of notes with stems pointing up. The lyrics "di" and "ol" are written below the notes. A circled 'p' is present below the bass staff. There are various annotations, including a circled '1' and a circled '2'.

Handwritten musical score for the fourth system. The treble staff contains a series of notes with stems pointing down, followed by a more complex rhythmic passage with stems pointing up. The bass staff contains a series of notes with stems pointing up. The lyrics "ritto" and "mp" are written below the notes. A circled 'mp' is present above the treble staff. There are various annotations, including a circled '1' and a circled '2'.

Satz 3

Modus

harter Rhythmus (sempre) (rhythmisch betont)

Handwritten musical notation for the first system. The treble clef staff contains a melodic line with a key signature of one sharp (F#). The notation includes a fermata over a note, various ornaments (trills, grace notes), and a final flourish. The bass line consists of chords, many marked with a plus sign (+).

Handwritten musical notation for the second system. The treble clef staff contains a melodic line with a key signature of one flat (Bb). The notation includes accents (^) over notes and a fermata. The bass line consists of chords, many marked with a plus sign (+).

Handwritten musical notation for the third system. The treble clef staff contains a melodic line with a key signature of one flat (Bb). The notation includes accents (^) over notes and a fermata. The bass line consists of chords, many marked with a plus sign (+).

Handwritten musical notation for the fourth system. The treble clef staff contains a melodic line with a key signature of one flat (Bb). The notation includes accents (^) over notes and a fermata. The bass line consists of chords, many marked with a plus sign (+).

Handwritten musical notation for the first system. The treble staff contains a melodic line with notes, rests, and dynamic markings including *p* and *A*. The bass staff contains a bass line with notes and rests.

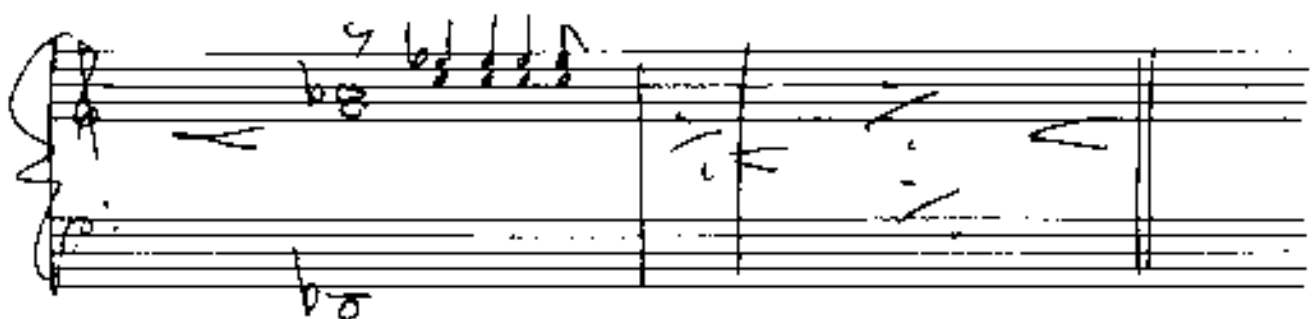
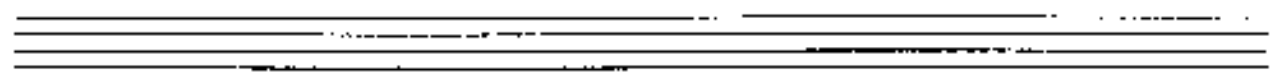
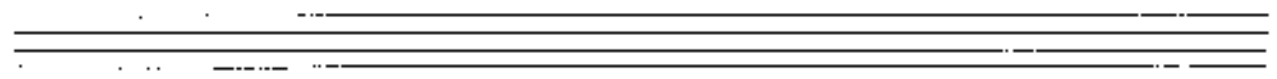
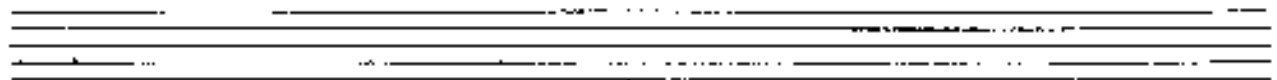
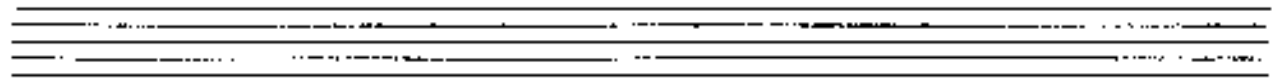
(Zeit ruft die

Handwritten musical notation for the second system. The treble staff contains a melodic line with notes and rests. The bass staff contains a bass line with notes and rests. A circled **CODA** symbol is present at the end of the system.

Tempo ① (2 tet ff)

Handwritten musical notation for the third system. The treble staff contains a melodic line with notes and rests. The bass staff contains a bass line with notes and rests. Dynamic markings include *p* and *ff*.

Handwritten musical notation for the fourth system. The treble staff contains a melodic line with notes and rests. The bass staff contains a bass line with notes and rests. Dynamic markings include *p* and *ff*.



Handwritten musical notation on a grand staff. The right hand (treble clef) contains a sequence of chords with accents (^) above them. A circled number "714" is written in the first measure. The left hand (bass clef) contains a few notes and rests.

Handwritten musical notation on a grand staff. The right hand (treble clef) contains a sequence of chords with accents (^) above them. The left hand (bass clef) contains a few notes and rests.

Handwritten musical notation on a grand staff. The right hand (treble clef) contains a sequence of chords with accents (^) above them. The left hand (bass clef) contains a sequence of chords with accents (^) above them. The word "mezzo" is written above the first measure.

Handwritten musical notation on a grand staff. The right hand (treble clef) contains a sequence of chords with accents (^) above them. The left hand (bass clef) contains a sequence of chords with accents (^) above them.

Handwritten musical score for the first system. The treble staff contains a melodic line with notes, rests, and dynamic markings such as accents (^) and slurs. The bass staff contains a bass line with notes and rests.

Handwritten musical score for the second system. The treble staff continues the melodic line. The bass staff includes the instruction "ins Tempo" and "pohier" written below the staff.

Handwritten musical score for the third system. It begins with the instruction "Tempo" and a circled "1". The treble staff features a melodic line with notes and rests. The bass staff contains a bass line with notes and rests.

Handwritten musical score for the fourth system. It ends with the instruction "2. D.C. al" and a circled "2". The treble staff features a melodic line with notes and rests. The bass staff contains a bass line with notes and rests.

Coda *(Sempre dim + rit)*

Lento

Handwritten musical notation on a grand staff. The top staff has a treble clef and contains notes with accidentals. The bottom staff has a bass clef and contains notes with accidentals. There are some markings below the staves, including a vertical line and a checkmark-like symbol.

Handwritten musical notation on a grand staff. The top staff has a treble clef and contains notes with accidentals. The bottom staff has a bass clef and contains notes with accidentals. There are some markings below the staves, including a vertical line and a checkmark-like symbol.

ppp

lento

Handwritten notes and accidentals in a vertical column.

v