

**Notenheft**

# Satz ①

(1) Allegro con brio

Handwritten musical notation for the first system. The treble staff contains chords with slurs and accents (^) above them. The bass staff contains chords with slurs below them.

Handwritten musical notation for the second system. The treble staff contains chords with slurs and accents (^) above them. The bass staff contains chords with slurs below them.

Handwritten musical notation for the third system. The treble staff contains chords with slurs and accents (^) above them. The bass staff contains chords with slurs below them.

Handwritten musical notation for the fourth system. The treble staff contains chords with slurs and accents (^) above them. The bass staff contains chords with slurs below them.

Handwritten musical notation for the first system, consisting of two staves. The upper staff features a long slur over the first two measures, followed by notes in the third and fourth measures. The lower staff contains chords in the first two measures and notes in the third and fourth. Circled 'p' markings are present in the third and fourth measures of both staves.

*Andante*

Handwritten musical notation for the second system, consisting of two staves. The upper staff contains notes with slurs and circled 'p' markings. The lower staff features chords and notes. Circled 'p' markings are present in the first measure of both staves.

Handwritten musical notation for the third system, consisting of two staves. The upper staff contains notes with slurs and accents. The lower staff features notes with slurs. Circled 'p' markings are present in the first measure of both staves.

Handwritten musical notation for the fourth system, consisting of two staves. The upper staff contains notes with slurs and accents. The lower staff features notes with slurs. Circled 'p' markings are present in the first measure of both staves.

Handwritten musical notation for the first system. The treble clef has a circled 'F' below it. The treble staff contains three chords with accents (^) above them, followed by three measures with diagonal slashes. The bass staff contains a simple melodic line of four notes.

Handwritten musical notation for the second system. The treble clef has a circled 'F' below it. The treble staff contains three chords with accents (^) above them, followed by three measures with diagonal slashes. The bass staff contains a simple melodic line.

Handwritten musical notation for the third system. The treble clef has a circled 'F' below it. The treble staff contains three chords with accents (^) above them, followed by three measures with diagonal slashes. The bass staff contains a simple melodic line.

Handwritten musical notation for the fourth system. The treble clef has a circled 'F' below it. The treble staff contains three chords with accents (^) above them, followed by three measures with diagonal slashes. The bass staff contains a simple melodic line.

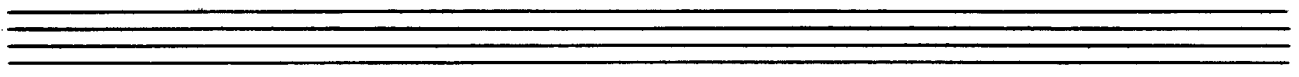
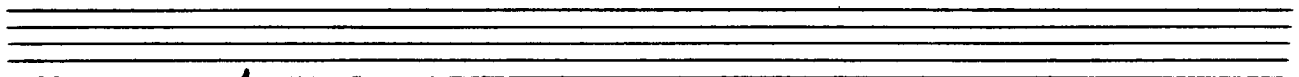
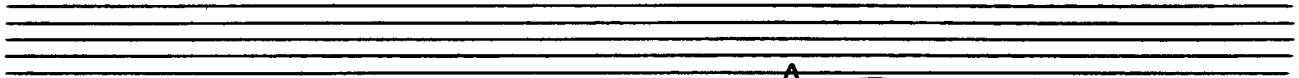
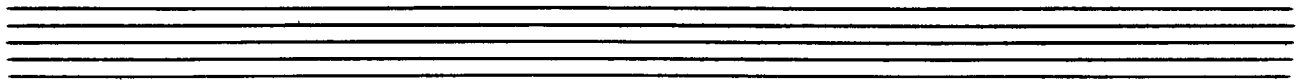
Handwritten musical notation for the first system. The treble clef staff contains several chords with accidentals (flats and naturals) and slurs. The bass clef staff shows a few notes with a sharp sign and a flat sign.

Handwritten musical notation for the second system. The treble clef staff has a circled key signature of three sharps (F#, C#, G#) and some notes with slurs. The bass clef staff has notes with a sharp sign and a flat sign. There are circled 'p' markings in both staves.

*sempre crescente*

Handwritten musical notation for the third system. The treble clef staff has a circled key signature of two sharps (F#, C#) and notes with slurs. The bass clef staff has notes with a sharp sign and a flat sign. There are circled 'p' markings in both staves.

Handwritten musical notation for the fourth system. The treble clef staff has a key signature of two sharps (F#, C#) and notes with slurs. The bass clef staff has notes with a sharp sign and a flat sign.









Handwritten musical notation for the first system. The treble clef staff contains notes with slurs and accents, and a circled 'f' dynamic marking. The bass clef staff contains notes with slurs and accents. The system concludes with a double bar line.

Handwritten musical notation for the second system. The treble clef staff contains notes with slurs and accents, and a circled 'p' dynamic marking. The bass clef staff contains notes with slurs and accents. The system concludes with a double bar line.

*sempre crescendo*

Handwritten musical notation for the third system. The treble clef staff contains notes with slurs and accents. The bass clef staff contains notes with slurs and accents. The system concludes with a double bar line.

Handwritten musical notation for the fourth system. The treble clef staff contains notes with slurs and accents. The bass clef staff contains notes with slurs and accents. The system concludes with a double bar line.

Handwritten musical notation for the first system. The system consists of two staves. The upper staff is in treble clef and contains a sequence of notes with slurs and accents. The lower staff is in bass clef and contains a sequence of notes with slurs and accents. There are two measures of music followed by two measures of rests.

Handwritten musical notation for the second system. The system consists of two staves. The upper staff is in treble clef and contains a sequence of notes with slurs and accents. The lower staff is in bass clef and contains a sequence of notes with slurs and accents. A dynamic marking 'mf' is present at the beginning. There are two measures of music followed by two measures of rests.

Handwritten musical notation for the third system. The system consists of two staves. The upper staff is in treble clef and contains a sequence of notes with slurs and accents. The lower staff is in bass clef and contains a sequence of notes with slurs and accents. There are two measures of music followed by two measures of rests.

Handwritten musical notation for the fourth system. The system consists of two staves. The upper staff is in treble clef and contains a sequence of notes with slurs and accents. The lower staff is in bass clef and contains a sequence of notes with slurs and accents. A circled 'f' dynamic marking is present at the beginning. There are two measures of music followed by two measures of rests.



*Langsam*

Handwritten musical notation for the first system. It consists of two staves. The upper staff is in treble clef and contains a melodic line with eighth and sixteenth notes, some beamed together, and a fermata. The lower staff is in bass clef and contains a harmonic accompaniment with chords and single notes. Dynamic markings include a circled 'p' (piano) and a circled 'f' (forte). There are also various performance instructions like accents and slurs.

*(poco rit)*

Handwritten musical notation for the second system. It continues the piece with similar notation. The upper staff has a melodic line with a fermata. The lower staff has a harmonic accompaniment. A circled 'f' is present. The tempo marking '(poco rit)' is written above the system.

*trist*

Handwritten musical notation for the third system. The upper staff features a more complex rhythmic pattern with many sixteenth notes. The lower staff has a harmonic accompaniment. A circled 'f' is present. The tempo marking 'trist' is written above the system.

Handwritten musical notation for the fourth system. It concludes the piece with various notes and rests. The upper staff has a melodic line with a fermata. The lower staff has a harmonic accompaniment. There are various performance instructions like accents and slurs.

gut + ohri

Handwritten musical notation for the first system. The treble staff contains a sequence of notes and chords, with some notes marked with accents (^) and slurs. The bass staff contains a few notes and chords, including a prominent bass note with an accent (^).

rubato *arco*

Handwritten musical notation for the second system. The treble staff begins with a circled 'H' and contains a series of notes with slurs and accents. The bass staff contains notes and chords, with some notes marked with accents (^).

zwick

Handwritten musical notation for the third system. The treble staff features a long note followed by a series of notes with slurs and accents. The bass staff contains notes and chords, with some notes marked with accents (^).

gut + ohri *rit. al*

Handwritten musical notation for the fourth system. The treble staff contains notes and chords, with some notes marked with accents (^) and slurs. The bass staff contains notes and chords, including a circled 'H' and a double bar line at the end.

*mod. accel.* [4x!]

Handwritten musical notation for the first system. It features a treble clef and a grand staff. The first measure contains several notes with slurs. The second measure has a large 'V' symbol. The third and fourth measures are marked with diagonal slashes. A large bracket is drawn under the first two measures.

Handwritten musical notation for the second system. It features a treble clef and a grand staff. The first measure contains several notes with slurs. The second measure has a large 'V' symbol. The third and fourth measures are marked with diagonal slashes. A large bracket is drawn under the first two measures.

Handwritten musical notation for the third system. It features a treble clef and a grand staff. The first measure contains several notes with slurs. The second measure has a large 'V' symbol. The third and fourth measures are marked with diagonal slashes. A large bracket is drawn under the first two measures. The word "lunga" is written above the fourth measure.

Satz 2

Cello



*cresc.*

Handwritten musical notation for the first system. The treble clef staff contains a circled **f** dynamic marking. The music consists of several measures with notes and accidentals, including a circled **f** in the first measure.

Handwritten musical notation for the second system. The treble clef staff contains a circled **f** dynamic marking. The music continues with notes and accidentals, including a circled **f** in the first measure.

Handwritten musical notation for the third system. The treble clef staff contains a circled **f** dynamic marking. The music includes notes and accidentals, with a circled **f** in the first measure.

Handwritten musical notation for the fourth system. The treble clef staff contains a circled **p** dynamic marking. The music includes notes and accidentals, with a circled **p** in the first measure.



Handwritten musical score for the first system. The treble clef part begins with a circled sharp sign (#) and contains several chords with upward-pointing accents (^). The bass clef part has a similar chordal structure. The system concludes with a double bar line and a key signature change to two sharps (F# and C#).

Handwritten musical score for the second system. The treble clef part features a circled sharp sign (#) and continues with complex chordal textures. The bass clef part has a more melodic line with some chordal accompaniment. The system ends with a double bar line and a key signature change to one sharp (F#).

Handwritten musical score for the third system. The treble clef part contains the lyrics "din" and "or". The bass clef part has a melodic line with a circled "p" dynamic marking. The system ends with a double bar line and the instruction "D.C." (Da Capo).

Handwritten musical score for the fourth system. The treble clef part contains the lyrics "gittolo" and "mp" (mezzo-piano). The bass clef part has a melodic line with a circled "mp" dynamic marking. The system ends with a double bar line and a circled "mp" dynamic marking.

Satz [3]

Mod. =

harter Rhythmus (sempre) (rhythmisch betont)

Handwritten musical notation for the first system, featuring a grand staff with treble and bass clefs. The treble clef part has a long slur over four measures, with notes including sharps and naturals. The bass clef part has a similar slur with notes and stems.

Handwritten musical notation for the second system, showing a grand staff with treble and bass clefs. The treble clef part contains chords and notes with accents. The bass clef part has notes with stems and some accidentals.

Handwritten musical notation for the third system, featuring a grand staff with treble and bass clefs. The treble clef part has notes with flats and naturals. The bass clef part has notes with stems and flats.

Handwritten musical notation for the fourth system, showing a grand staff with treble and bass clefs. The treble clef part has notes with flats and naturals. The bass clef part has notes with stems and flats.

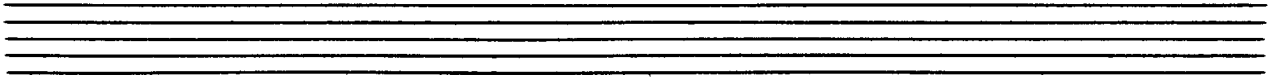
Handwritten musical notation for the first system, featuring a treble and bass staff with complex rhythmic patterns and slurs.

Handwritten musical notation for the second system, including the instruction "(Zeit ruft dich)" and a circled "CODA" symbol.

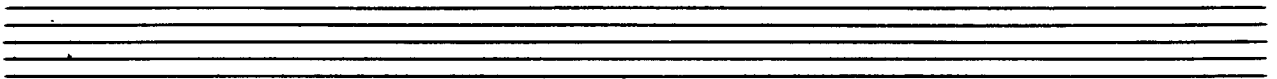
Tempo ① (2. te + ff)

Handwritten musical notation for the third system, starting with a tempo marking and dynamic instructions.

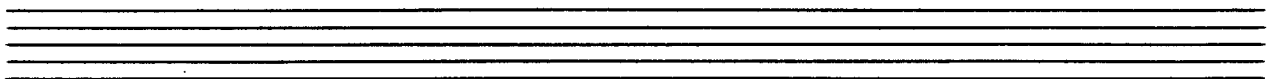
Handwritten musical notation for the fourth system, continuing the piece with various notes and slurs.



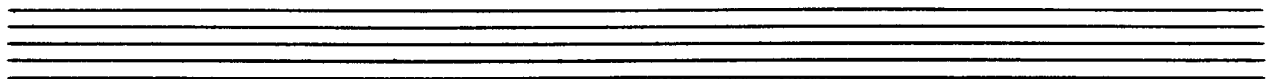
Handwritten musical notation for the first system. The treble clef staff contains a melodic line starting with a quarter note G4, followed by eighth notes A4, B4, C5, D5, E5, F5, G5, and a dotted quarter note G5. The bass clef staff contains a whole note chord consisting of G3, B2, and D3. The system concludes with a double bar line.



Handwritten musical notation for the second system. The treble clef staff contains a melodic line starting with a quarter note G4, followed by eighth notes A4, B4, C5, D5, E5, F5, G5, and a dotted quarter note G5. The bass clef staff contains a whole note chord consisting of G3, B2, and D3. The system concludes with a double bar line.



Handwritten musical notation for the third system. The treble clef staff contains a melodic line starting with a quarter note G4, followed by eighth notes A4, B4, C5, D5, E5, F5, G5, and a dotted quarter note G5. The bass clef staff contains a whole note chord consisting of G3, B2, and D3. The system concludes with a double bar line.



Handwritten musical notation for the fourth system. The treble clef staff contains a melodic line starting with a quarter note G4, followed by eighth notes A4, B4, C5, D5, E5, F5, G5, and a dotted quarter note G5. The bass clef staff contains a whole note chord consisting of G3, B2, and D3. The system concludes with a double bar line.

Handwritten musical notation for the first system. The treble clef staff contains four measures of music with notes and rests, marked with accents (^) above the notes. A circled number '711' is written in the first measure. The bass clef staff contains two measures with notes and rests.

Handwritten musical notation for the second system. The treble clef staff contains four measures of music with notes and rests, marked with accents (^) above the notes. The bass clef staff contains two measures with notes and rests.

Handwritten musical notation for the third system. The word "meno" is written above the treble clef staff. The treble clef staff contains four measures of music with notes and rests, marked with accents (^) above the notes. The bass clef staff contains four measures with notes and rests.

Handwritten musical notation for the fourth system. The treble clef staff contains four measures of music with notes and rests, marked with accents (^) above the notes. The bass clef staff contains four measures with notes and rests.



Handwritten musical score for the first system. It consists of two staves: a treble clef staff on top and a bass clef staff on the bottom. The treble staff contains several measures of music with notes, rests, and dynamic markings like accents (^) and slurs. The bass staff contains chords and rests.

Handwritten musical score for the second system. It consists of two staves. The treble staff has notes and rests. The bass staff has chords and rests. Below the bass staff, the instruction "ins Tempo gehen" is written in cursive.

Handwritten musical score for the third system. It consists of two staves. The treble staff starts with a circled "1" and contains notes and rests. The bass staff contains chords and rests.

Handwritten musical score for the fourth system. It consists of two staves. The treble staff contains notes and rests. The bass staff contains chords and rests. The system ends with a double bar line and a circled "2".

*Sempre dim + rit*

*codr*

*Lento*

*pp*

Handwritten musical notation on a grand staff. The upper staff contains notes with accents and a fermata. The lower staff contains a whole note chord with a fermata. The word "lento" is written below the lower staff.

Handwritten musical notation on a grand staff. The upper staff contains notes with a circled "ppp" dynamic marking and a large scribble. The lower staff contains notes with a "lento" marking and a large scribble.