

Notenheft

Ballett (Huppefrosch)

nach Edgar Allan Poe

(Klavierauszug)

Handlung: [Ort: Festsaal in einem Königspalast -

Personen: König - Minister - Hofstaat -

Huppefrosch (verkrüppelter Hofmann)

seine Freundin (auch von kleiner Statur) -

Orchesterbesetzung:

2 Flöten (Picc)

2 Oboen (Engl. Horn)

2 Klarinetten (Bassklar)

2 Fagotten (Kontre)

3 Trompeten

4 Hörner

3 Personen

Tuba

großes Streichorchester

Vibraphon

gr. Schlagwerk -

Harfe.

(sofort offene Büchse |

(sehr langsam

breit

(auf 6 Schläge)

ppp

Block (H)

pp

Block (H)

Holz

cresc...

Block (H)

Handwritten musical score for piano, consisting of three systems of staves. The first system includes dynamics like "mf" and "cresc.", and features chords with flats and a fermata. The second system includes the dynamic "brist" and features chords with sharps. The third system includes the dynamic "poco rit" and features a large fermata and a circled "ff" dynamic marking.

Krotesk

Handwritten musical score for the first system. The treble clef staff contains a melodic line with notes and accidentals (sharps, flats, naturals). A circled 'p' is written below the first measure. The bass clef staff features a long horizontal line with a slight curve, and some notes are written below it.

Handwritten musical score for the second system. The treble clef staff continues the melodic line with notes and accidentals. A circled 'p' is written below the first measure. The bass clef staff has a long horizontal line and some notes below it.

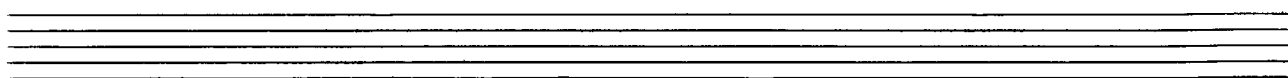
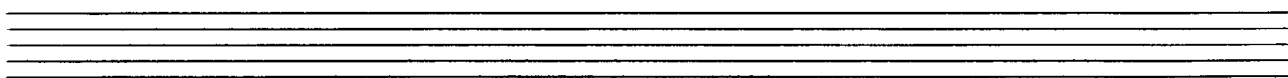
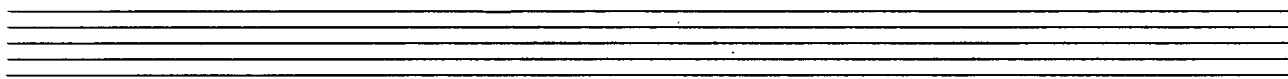
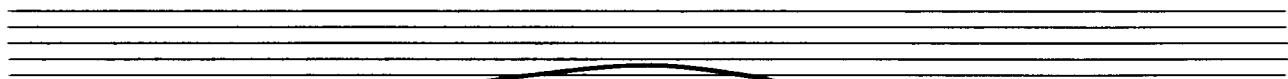
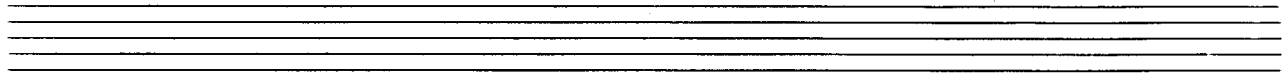
Handwritten musical score for the third system. The treble clef staff has more complex notation, including a circled 'p' and a circled 'f'. The bass clef staff has a long horizontal line and notes below it, with a circled 'f' written below the line.

Allegretto (Kvartesk)

Handwritten musical notation for the first system, measures 1-4. The top staff is in treble clef with a 3/8 time signature and a circled 'p' dynamic marking. The bottom staff is in treble clef. The music consists of chords and melodic lines with various accidentals.

Handwritten musical notation for the second system, measures 5-8. The top staff is in treble clef. The bottom staff is in treble clef. The music continues with chords and melodic lines.

Handwritten musical notation for the third system, measures 9-12. The top staff is in treble clef with a circled 'f' dynamic marking. The bottom staff is in treble clef. The music concludes with chords and melodic lines.

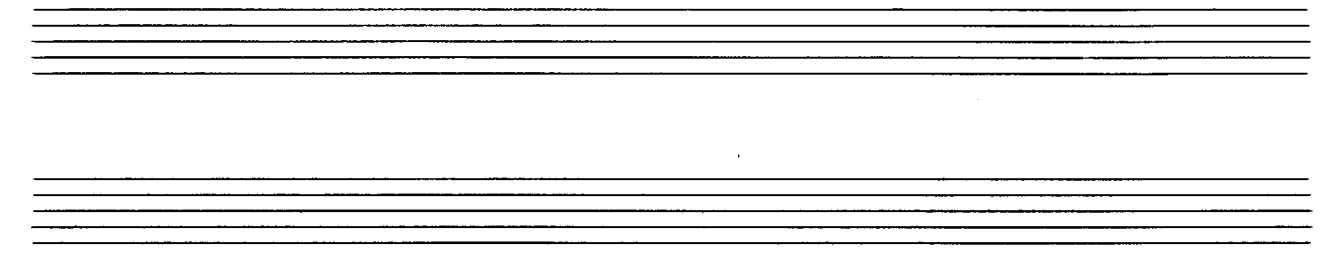


Handwritten musical notation for the first system. The treble clef staff contains a melodic line with notes and accidentals (sharps and naturals) under a large slur. The bass clef staff contains a bass line with notes and accidentals, including a sharp sign.

Handwritten musical notation for the second system. The treble clef staff features a complex rhythmic pattern with many notes and slurs. The bass clef staff also has a complex rhythmic pattern with notes and slurs.

Handwritten musical notation for the third system. The treble clef staff has notes and slurs. The bass clef staff includes dynamic markings: '> din' (forte) and '> p' (piano). There are also some handwritten annotations like 'b' and 'bb'.

Handwritten musical notation for the fourth system. The treble clef staff has notes and slurs. The bass clef staff includes dynamic markings: 'p' (piano) and 'pp' (pianissimo). There are also some handwritten annotations like '2. 6+' and 'ohne R [E:]'.



Handwritten musical notation on a grand staff. The right hand (treble clef) begins with a piano (*pp*) dynamic and a key signature of one sharp (F#). The first measure contains a quarter note chord (F#, C, G). The following four measures contain rests. The left hand (bass clef) has a whole note chord in the first measure (F, C, G) and rests in the subsequent four measures. A slur covers the first three measures of the left hand, with a fermata over the final measure. Below the staff, the notes F, C, and G are written with flats and a sharp: $\flat F$, $\flat C$, and $\sharp G$.

Handwritten musical notation on a grand staff. The right hand (treble clef) begins with a key signature of one sharp (F#). The first measure contains a quarter note chord (F#, C, G). The following four measures contain rests. The left hand (bass clef) has a whole note chord in the first measure (F, C, G) and rests in the subsequent four measures. A slur covers the first three measures of the left hand, with a fermata over the final measure. Below the staff, the notes F, C, and G are written with sharps and a flat: $\sharp F$, $\sharp C$, and $\flat G$.

Handwritten musical notation on a grand staff. The right hand (treble clef) begins with a key signature of one sharp (F#). The first measure contains a quarter note chord (F#, C, G). The following four measures contain rests. The left hand (bass clef) has a whole note chord in the first measure (F, C, G) and rests in the subsequent four measures. A slur covers the first three measures of the left hand, with a fermata over the final measure. Above the first measure of the right hand, the marking *gr. rit.* is written.

sehr langsam - ruhig (Achtel) ^{auf}

Adagio

Handwritten musical notation for the first system. The treble clef staff contains a melodic line with notes and accidentals (flats and sharps) under a slur. Dynamic markings include *p* and *mp*. The bass clef staff contains a bass line with notes and accidentals, also under a slur.

Handwritten musical notation for the second system. The treble clef staff continues the melodic line with notes and accidentals. The bass clef staff continues the bass line. A dynamic marking of *f* is present.

Handwritten musical notation for the third system. The treble clef staff contains notes and accidentals. The bass clef staff contains notes and accidentals. The instruction "cresc. brevit." is written above the treble staff. A dynamic marking of *ff* is circled in the bass staff.

Handwritten musical score for a piano piece. It consists of two staves. The upper staff is in treble clef and contains a melodic line with notes G4, A4, Bb4, C5, D5, E5, F5, G5, A5, Bb5, C6, D6, E6, F6, G6, A6, Bb6, C7. The lower staff is in bass clef and contains a bass line with notes G2, A2, Bb2, C3, D3, E3, F3, G3, A3, Bb3, C4, D4, E4, F4, G4, A4, Bb4, C5. There are dynamic markings 'p' and 'pp' and accents throughout.

folgt Allegretto mit ||:| bis || dann hier weiter

Handwritten musical score for a piano piece. It consists of two staves. The upper staff is in treble clef and contains a melodic line with notes G4, A4, Bb4, C5, D5, E5, F5, G5, A5, Bb5, C6, D6, E6, F6, G6, A6, Bb6, C7. The lower staff is in bass clef and contains a bass line with notes G2, A2, Bb2, C3, D3, E3, F3, G3, A3, Bb3, C4, D4, E4, F4, G4, A4, Bb4, C5. There are dynamic markings 'p' and 'pp' and accents throughout.

Handwritten musical score for a piano piece. It consists of two staves. The upper staff is in treble clef and contains a melodic line with notes G4, A4, Bb4, C5, D5, E5, F5, G5, A5, Bb5, C6, D6, E6, F6, G6, A6, Bb6, C7. The lower staff is in bass clef and contains a bass line with notes G2, A2, Bb2, C3, D3, E3, F3, G3, A3, Bb3, C4, D4, E4, F4, G4, A4, Bb4, C5. There are dynamic markings 'p' and 'pp' and accents throughout.

Handwritten musical score for the first system. The top staff is in treble clef and the bottom staff is in bass clef. The music consists of several measures with notes, rests, and dynamic markings. The first measure has an accent (^) over a quarter note. The second measure has an accent (^) over a quarter note. The third measure has an accent (^) over a quarter note. The fourth measure has an accent (^) over a quarter note. The fifth measure has an accent (^) over a quarter note. The sixth measure has an accent (^) over a quarter note. The seventh measure has an accent (^) over a quarter note. The eighth measure has an accent (^) over a quarter note. The ninth measure has an accent (^) over a quarter note. The tenth measure has an accent (^) over a quarter note. The eleventh measure has an accent (^) over a quarter note. The twelfth measure has an accent (^) over a quarter note. The thirteenth measure has an accent (^) over a quarter note. The fourteenth measure has an accent (^) over a quarter note. The fifteenth measure has an accent (^) over a quarter note. The sixteenth measure has an accent (^) over a quarter note. The seventeenth measure has an accent (^) over a quarter note. The eighteenth measure has an accent (^) over a quarter note. The nineteenth measure has an accent (^) over a quarter note. The twentieth measure has an accent (^) over a quarter note. The dynamic marking "poco rit..." is written in the bass staff.

leider (Kvotest) ... allegretto

Handwritten musical score for the second system. The top staff is in treble clef and the bottom staff is in bass clef. The music consists of several measures with notes, rests, and dynamic markings. The first measure has a dynamic marking "pp" and a tempo/mood marking "leider (Kvotest) ... allegretto". The second measure has a dynamic marking "pp" and a tempo/mood marking "leider (Kvotest) ... allegretto". The third measure has a dynamic marking "pp" and a tempo/mood marking "leider (Kvotest) ... allegretto". The fourth measure has a dynamic marking "pp" and a tempo/mood marking "leider (Kvotest) ... allegretto". The fifth measure has a dynamic marking "pp" and a tempo/mood marking "leider (Kvotest) ... allegretto". The sixth measure has a dynamic marking "pp" and a tempo/mood marking "leider (Kvotest) ... allegretto". The seventh measure has a dynamic marking "pp" and a tempo/mood marking "leider (Kvotest) ... allegretto". The eighth measure has a dynamic marking "pp" and a tempo/mood marking "leider (Kvotest) ... allegretto". The ninth measure has a dynamic marking "pp" and a tempo/mood marking "leider (Kvotest) ... allegretto". The tenth measure has a dynamic marking "pp" and a tempo/mood marking "leider (Kvotest) ... allegretto". The eleventh measure has a dynamic marking "pp" and a tempo/mood marking "leider (Kvotest) ... allegretto". The twelfth measure has a dynamic marking "pp" and a tempo/mood marking "leider (Kvotest) ... allegretto". The thirteenth measure has a dynamic marking "pp" and a tempo/mood marking "leider (Kvotest) ... allegretto". The fourteenth measure has a dynamic marking "pp" and a tempo/mood marking "leider (Kvotest) ... allegretto". The fifteenth measure has a dynamic marking "pp" and a tempo/mood marking "leider (Kvotest) ... allegretto". The sixteenth measure has a dynamic marking "pp" and a tempo/mood marking "leider (Kvotest) ... allegretto". The seventeenth measure has a dynamic marking "pp" and a tempo/mood marking "leider (Kvotest) ... allegretto". The eighteenth measure has a dynamic marking "pp" and a tempo/mood marking "leider (Kvotest) ... allegretto". The nineteenth measure has a dynamic marking "pp" and a tempo/mood marking "leider (Kvotest) ... allegretto". The twentieth measure has a dynamic marking "pp" and a tempo/mood marking "leider (Kvotest) ... allegretto".

Handwritten musical score for the third system. The top staff is in treble clef and the bottom staff is in bass clef. The music consists of several measures with notes, rests, and dynamic markings. The first measure has a dynamic marking "pp" and a tempo/mood marking "leider (Kvotest) ... allegretto". The second measure has a dynamic marking "pp" and a tempo/mood marking "leider (Kvotest) ... allegretto". The third measure has a dynamic marking "pp" and a tempo/mood marking "leider (Kvotest) ... allegretto". The fourth measure has a dynamic marking "pp" and a tempo/mood marking "leider (Kvotest) ... allegretto". The fifth measure has a dynamic marking "pp" and a tempo/mood marking "leider (Kvotest) ... allegretto". The sixth measure has a dynamic marking "pp" and a tempo/mood marking "leider (Kvotest) ... allegretto". The seventh measure has a dynamic marking "pp" and a tempo/mood marking "leider (Kvotest) ... allegretto". The eighth measure has a dynamic marking "pp" and a tempo/mood marking "leider (Kvotest) ... allegretto". The ninth measure has a dynamic marking "pp" and a tempo/mood marking "leider (Kvotest) ... allegretto". The tenth measure has a dynamic marking "pp" and a tempo/mood marking "leider (Kvotest) ... allegretto". The eleventh measure has a dynamic marking "pp" and a tempo/mood marking "leider (Kvotest) ... allegretto". The twelfth measure has a dynamic marking "pp" and a tempo/mood marking "leider (Kvotest) ... allegretto". The thirteenth measure has a dynamic marking "pp" and a tempo/mood marking "leider (Kvotest) ... allegretto". The fourteenth measure has a dynamic marking "pp" and a tempo/mood marking "leider (Kvotest) ... allegretto". The fifteenth measure has a dynamic marking "pp" and a tempo/mood marking "leider (Kvotest) ... allegretto". The sixteenth measure has a dynamic marking "pp" and a tempo/mood marking "leider (Kvotest) ... allegretto". The seventeenth measure has a dynamic marking "pp" and a tempo/mood marking "leider (Kvotest) ... allegretto". The eighteenth measure has a dynamic marking "pp" and a tempo/mood marking "leider (Kvotest) ... allegretto". The nineteenth measure has a dynamic marking "pp" and a tempo/mood marking "leider (Kvotest) ... allegretto". The twentieth measure has a dynamic marking "pp" and a tempo/mood marking "leider (Kvotest) ... allegretto".

Handwritten musical score for the first system. The top staff is in treble clef and contains complex chords with accidentals (sharps, flats, naturals) and accents. The bottom staff is in bass clef and contains a melodic line with notes and rests. A dynamic marking 'f' is present in the first measure.

Handwritten musical score for the second system. The top staff has a dynamic marking 'din' (diminuendo) and the bottom staff has 'pp' (pianissimo). The music continues with complex chords and melodic fragments.

Handwritten musical score for the third system. The instruction 'wieder sehr breit (pesante)' is written above the staff. The music features wide intervals and a slower, more ponderous feel.

Handwritten musical score for the fourth system. The instruction 'accel.' (accelerando) is written above the staff. The music shows a transition to a faster tempo.

marsch und erregt

Handwritten musical notation for the first system. It features a grand staff with treble and bass clefs. The treble clef part contains a melody with notes and accidentals. The bass clef part contains a bass line with a bracketed section labeled "dazu Block B". The time signature is 6/4 with a sharp sign. The key signature has two sharps.

Handwritten musical notation for the second system, continuing the melody from the first system.

Handwritten musical notation for the third system, continuing the melody from the second system.

nach steigern im Tempo →

Prestissimo

Leuto (auf Achtel)

großes rit + dim.....

sehr ruhig

b b # # b #

Handwritten musical score for the first system. The key signature is B-flat major (two flats). The piano part has a circled 'p' and a sharp sign. The bass part has a circled 'p' and a sharp sign. Dynamics include 'mf', 'p', and 'pp'. There are various musical notations like slurs, accents, and fermatas.

sehr langsam beginnen - ständig steigern in Stärke und Tempo

Handwritten musical score for the second system. The key signature is B major (two sharps). The piano part has a circled 'pp'. There are various musical notations like slurs and accents.

Handwritten musical score for the third system. The key signature is B major (two sharps). There are various musical notations like slurs and accents.

Handwritten musical score system 1. The system consists of two staves. The upper staff is in treble clef and contains a whole rest followed by a half note chord with notes G#4, A#4, and B4. The lower staff is in bass clef and contains a half note chord with notes G2, B1, and D2. A slur with an accent (^) spans the upper staff's notes. The number '77' is written to the right of the upper staff.

auf (1 Schlag übergehen!)

Handwritten musical score system 2. The system consists of two staves. The upper staff is in treble clef and contains a whole rest followed by a half note chord with notes G#4, A#4, and B4. The lower staff is in bass clef and contains a half note chord with notes G2, B1, and D2. A slur with an accent (^) spans the upper staff's notes. The number '77' is written to the right of the upper staff. The dynamic marking 'mf' is written below the lower staff.

Handwritten musical score system 3. The system consists of two staves. The upper staff is in treble clef and contains a whole rest followed by a half note chord with notes G#4, A#4, and B4. The lower staff is in bass clef and contains a half note chord with notes G2, B1, and D2. A slur with an accent (^) spans the upper staff's notes. The number '77' is written to the right of the upper staff. The dynamic marking 'f' is written below the lower staff.

Handwritten musical score system 4. The system consists of two staves. The upper staff is in treble clef and contains a whole rest followed by a half note chord with notes G#4, A#4, and B4. The lower staff is in bass clef and contains a half note chord with notes G2, B1, and D2. A slur with an accent (^) spans the upper staff's notes. The number '77' is written to the right of the upper staff. The dynamic marking 'f' is written below the lower staff.

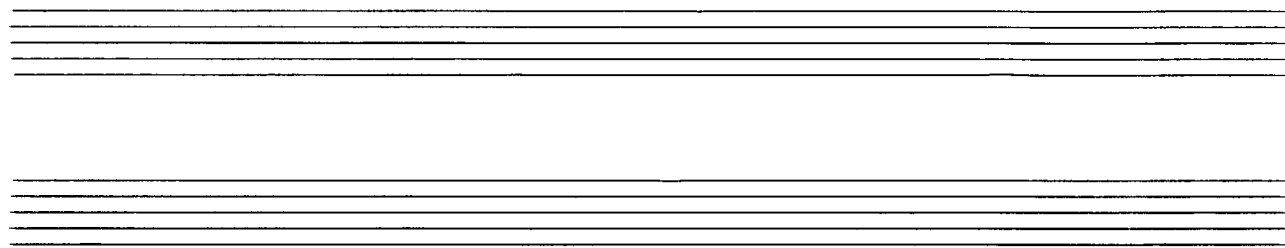
sehr rasche (kräftigste 1)

Handwritten musical notation for the first system. The treble clef staff contains a melodic line with notes and rests, including a sharp sign (F#) and a fermata. The bass clef staff contains a bass line with notes and rests, including a sharp sign (F#) and a fermata. The word "hant" is written above the bass staff. There are various accidentals (sharps, flats, naturals) and slurs throughout the system.

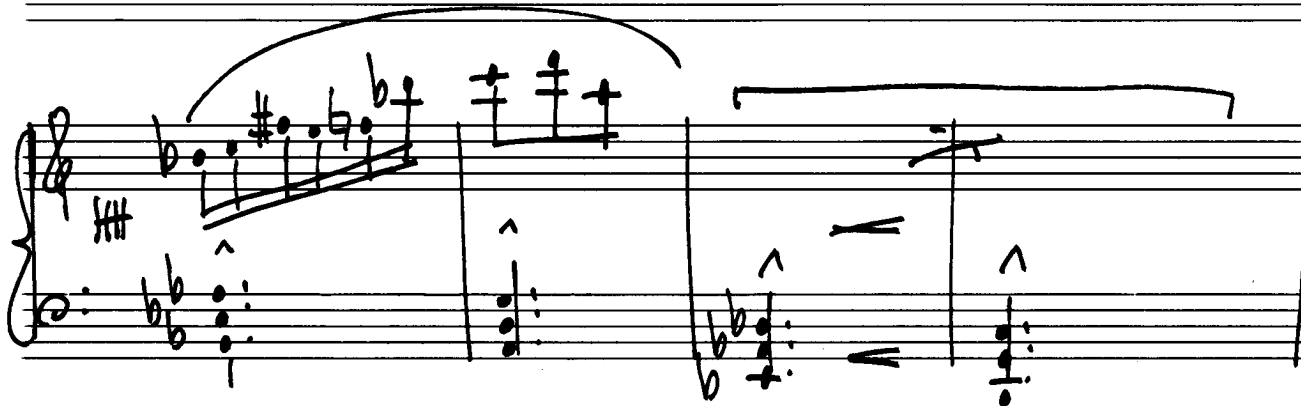
Handwritten musical notation for the second system. The treble clef staff continues the melodic line with notes and rests, including a sharp sign (F#) and a fermata. The bass clef staff continues the bass line with notes and rests, including a sharp sign (F#) and a fermata. There are various accidentals and slurs throughout the system.

Handwritten musical notation for the third system. The treble clef staff contains a melodic line with notes and rests, including a sharp sign (F#) and a fermata. The bass clef staff contains a bass line with notes and rests, including a sharp sign (F#) and a fermata. There are various accidentals and slurs throughout the system.

Handwritten musical notation for the fourth system. The treble clef staff contains a melodic line with notes and rests, including a sharp sign (F#) and a fermata. The bass clef staff contains a bass line with notes and rests, including a sharp sign (F#) and a fermata. There are various accidentals and slurs throughout the system.



letzten 20 Takte mit $\parallel::\parallel$ *moderato*
(immer wilder und *turbulenter*) \rightarrow



Pommes solo (sehr breit) großes mit dir..

3/8 auf Achtel.

(Zwischenspiel)

Lento

äußerst ruhig

pp

darzu Block (C)

p

darzu Block (C)

poco rit....

Handwritten musical notation for the first system. It features a treble clef, a key signature of one flat (B-flat), and a time signature of 8/8. The notation includes a series of chords and melodic lines with various accidentals and dynamics. The first measure is marked with a piano dynamic (pppp). The notation is dense and includes many accidentals and slurs.

Handwritten musical notation for the second system. It continues the piece with similar notation and dynamics. The notation is dense and includes many accidentals and slurs.

Handwritten musical notation for the third system. It shows further development of the musical themes. The notation is dense and includes many accidentals and slurs.

Handwritten musical notation for the fourth system. It concludes with a 'subito allouca' instruction. The notation is dense and includes many accidentals and slurs.

(auf 3) *Maestoso*

Handwritten musical notation for the first system, featuring a treble and bass clef with various notes and accidentals.

Handwritten musical notation for the second system, continuing the piece with similar notation.

Handwritten musical notation for the third system, showing a change in the bass line.

Handwritten musical notation for the fourth system, including the lyrics "rit and dim" and dynamic markings.

Tempo de Menuetto.

Handwritten musical notation for the first system, measures 1-2. The music is in treble and bass clefs. The right hand has a melodic line with a slur over measures 1 and 2, and a fermata over the final note. The left hand has a bass line with a slur over measures 1 and 2. Dynamics include piano (p) and accents (^).

Handwritten musical notation for the second system, measures 3-4. The music continues in treble and bass clefs. The right hand has a melodic line with a slur over measures 3 and 4, and a fermata over the final note. The left hand has a bass line with a slur over measures 3 and 4. Dynamics include piano (p) and accents (^).

Handwritten musical notation for the third system, measures 5-6. The music continues in treble and bass clefs. The right hand has a melodic line with a slur over measures 5 and 6, and a fermata over the final note. The left hand has a bass line with a slur over measures 5 and 6. Dynamics include piano (p) and accents (^).

Handwritten musical notation for the fourth system, measures 7-8. The music continues in treble and bass clefs. The right hand has a melodic line with a slur over measures 7 and 8, and a fermata over the final note. The left hand has a bass line with a slur over measures 7 and 8. Dynamics include piano (p) and accents (^).

Handwritten musical score system 1, consisting of two staves. The upper staff is in treble clef and contains a melodic line with various accidentals (sharps, flats, naturals) and a large slur over the first two measures. The lower staff is in bass clef and contains a bass line with chords and dynamics such as *ff*, *f*, and *p*. There are also some handwritten annotations like a '3' and a 'p' with an accent mark.

Handwritten musical score system 2, consisting of two staves. The upper staff has a melodic line with a slur and a '3' marking. The lower staff has a bass line with chords and dynamics like *pp* and *f*. There are also some handwritten annotations like a '3' and a 'p' with an accent mark.

Handwritten musical score system 3, consisting of two staves. The upper staff has a melodic line with a slur and various accidentals. The lower staff has a bass line with chords and dynamics like *ff*. There are also some handwritten annotations like a 'p' with an accent mark.

Handwritten musical score system 4, consisting of two staves. The upper staff has a melodic line with a slur and various accidentals. The lower staff has a bass line with chords and dynamics like *f* and *p*. There are also some handwritten annotations like a 'p' with an accent mark.

allmählich immer rascher und stärker werden →
bis auf turbulente (1.) Schlag

(letzten 30 Takte modus) → mit ständiger Steigerung...

Presto (sehr wild und ausgelassen) auf 1 Schlag

Handwritten musical notation for the first system. It consists of two staves: a treble clef staff and a bass clef staff. The treble staff contains several measures of music with notes, rests, and accidentals. The bass staff contains fewer notes, mostly whole notes and rests. A large bracket spans across both staves, indicating a single system of music.

Handwritten musical notation for the second system. It consists of two staves: a treble clef staff and a bass clef staff. The treble staff shows more complex rhythmic patterns with eighth and sixteenth notes. The bass staff continues with simple harmonic support. A large bracket spans across both staves.

Handwritten musical notation for the third system. It consists of two staves: a treble clef staff and a bass clef staff. The treble staff features a melodic line with various intervals and rests. The bass staff provides a steady accompaniment. A large bracket spans across both staves.

Handwritten musical notation for the fourth system. It consists of two staves: a treble clef staff and a bass clef staff. The treble staff ends with a double bar line. A box containing the number '3x' is written above the treble staff. The bass staff continues with notes and rests. A large bracket spans across both staves.

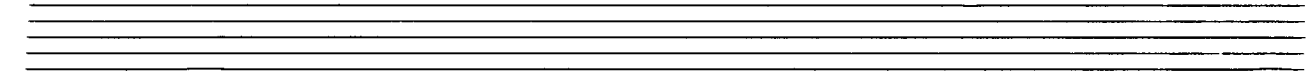
Handwritten musical score for the first system. The treble clef staff contains five measures of music, each with a whole note chord and a slur above it. The bass clef staff contains five measures of music, each with a whole note chord and an accent (^) above it. The first measure of the bass staff has a sharp sign (#) above the staff.

Handwritten musical score for the second system. The treble clef staff contains five measures of music, each with a whole note chord and a slur above it. The bass clef staff contains five measures of music, each with a whole note chord and an accent (^) above it.

Block D

Handwritten musical score for the third system. It begins with a piano (pp) dynamic marking. The treble clef staff contains four measures of music, each with a triplet of eighth notes. The bass clef staff contains four measures of music, each with a triplet of eighth notes. The first measure of the bass staff has a forte (f) dynamic marking.

Handwritten musical score for the fourth system. It continues the triplet patterns from the previous system. The treble clef staff contains four measures of music, each with a triplet of eighth notes. The bass clef staff contains four measures of music, each with a triplet of eighth notes. The first measure of the bass staff has a forte (f) dynamic marking.



Handwritten musical score for the first system. It consists of two staves: a piano staff (treble clef) and a bass staff (bass clef). The piano staff begins with a dynamic marking of *ppp* and a hairpin crescendo. The word *campane* is written above the staff, followed by *cresc.* and the number *744*. The bass staff also starts with *ppp*. The music includes various notes, rests, and slurs, with the number *744* appearing multiple times. A large arrow above the staves points to the right, indicating a continuation of the piece.

Handwritten musical score for the second system, continuing from the first. It features two staves with complex rhythmic patterns, including many beamed notes and slurs. The number *744* is written above the piano staff several times. The bass staff contains dense, rhythmic accompaniment. The system concludes with a double bar line and a fermata-like symbol.

Handwritten musical score for the third system. The piano staff is filled with dense, rhythmic textures, including many beamed notes and slurs. The bass staff continues with a similar rhythmic accompaniment. The system ends with a double bar line and a fermata-like symbol.

(chromatisch) Presto

Handwritten musical score for the first system. It features three staves: a treble clef staff with a 6/4 time signature, a bass clef staff, and a common time (C) staff. The treble staff contains a chromatic sequence of chords with accidentals (sharps and flats) and some triplets. The bass staff has a few notes with accents. The common time staff has three chords.

Handwritten musical score for the second system. It features three staves: a treble clef staff, a bass clef staff, and a common time (C) staff. The treble staff contains a chromatic sequence of chords with accidentals and some eighth notes. The bass staff has a few notes with accents. The common time staff has three chords.

Handwritten musical score for the third system. It features three staves: a treble clef staff, a bass clef staff, and a common time (C) staff. The treble staff contains a chromatic sequence of chords with accidentals and some eighth notes. The bass staff has a few notes with accents. The common time staff has three chords.

Handwritten musical score for a piano piece, featuring a grand staff with treble, two middle, and bass clefs. The music includes various chords, accidentals, and a fermata over the final measure.

Handwritten note: letzten 4 Takte nachwärts

Handwritten musical score for a piano piece, featuring a grand staff with treble and bass clefs. The music includes various chords, accidentals, and a circled 'III' in the bass clef.

Handwritten musical score for piano. The system consists of a treble clef staff and a bass clef staff. The music is written in a key with one flat (B-flat major or D minor) and a common time signature. The score includes a circled key signature symbol in the treble staff. The music is characterized by dense, complex chordal textures with many accidentals and a melodic line in the treble staff. A large slur covers the entire system.

Handwritten musical score for piano. The system consists of a treble clef staff and a bass clef staff. The music is written in a key with one flat and a common time signature. The score includes performance instructions: *(percutie)*, *(grotes rit....)*, and *lunga*. The music features a melodic line in the treble staff with accents (^) and a bass line with a wavy, rhythmic pattern. A large slur covers the entire system.