

# KONZERT

für Flöte Solo

und 2 Trompeten (Jazz)

1 Horn

1 Posaune

1 Tuben

Bass

Schlagzeug (Jazz)

Leute (♩)

Flöte Solo

2TR

H

P

T

Bas

Subb

C

D

N

S

O

R

D

Hp =  $b g' : \text{---} b b' d' : \text{---} f > p$

Hp =  $b d' : \text{---} b d' : \text{---} f > p$

Hp =  $b g' : \text{---} d' : \text{---} f = p$

1

Hp =  $g' : \text{---} b g' : \text{---} f > p$

Hp =  $d' : \text{---} g' : \text{---} f > p$

Hp =  $b d' : \text{---} b d' : \text{---} f > p$

Hp =  $b b' : \text{---} b d' : \text{---} f = p$

Hp =

pesante

Handwritten musical score for the first system, consisting of five staves. The notation includes rests on all staves in the first two measures. In the third measure, there are several annotations: an upward-pointing arrow above the second staff, a circled '0' above the third staff, and a '2' above the fourth staff. The fourth staff contains a series of notes with a slur and an accent (^) above it. The fifth staff has a single note with a slur below it.

Handwritten musical score for the second system, consisting of five staves. The notation is more complex, featuring rhythmic patterns, slurs, and accents. The first measure shows a series of notes with a slur and an accent (^) above it. The second measure shows a series of notes with a slur and an accent (^) above it. The third measure shows a series of notes with a slur and an accent (^) above it. The fourth measure shows a series of notes with a slur and an accent (^) above it. The fifth measure shows a series of notes with a slur and an accent (^) above it.

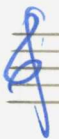
Handwritten musical score for a woodwind section, consisting of four staves. The first two staves are for flutes and the last two for clarinets. The music is in 4/4 time and consists of two measures. The first measure shows various chords and melodic lines, while the second measure continues with similar patterns. Arrows point from the first measure to the second.

2

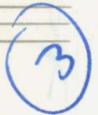
accel →

Handwritten musical score for a horn section, consisting of four staves. The music is in 4/4 time and consists of two measures. The first measure shows chords and melodic lines, while the second measure continues with similar patterns. Dynamics markings include "mp" and "f". A vertical line is drawn between the two measures, and an "accel" marking with an arrow points to the right above the staff.

Solo ( ganz frei



claus + rit - - - -



Mod. assai

Handwritten musical score for the first system. The flute part (top staff) begins with a treble clef, a key signature of one flat (B-flat), and a dynamic marking of *mf*. The first measure contains a quarter note B-flat, a quarter note G, and a quarter rest. The second measure contains a quarter note F, a quarter note E, and a quarter note D. The string quartet (bottom four staves) is marked *pp* and consists of four parts: Violin I (C), Violin II (D), Viola (E), and Cello/Double Bass (F). Each part has a half note with a slur and a fermata.

Handwritten musical score for the second system. The flute part (top staff) continues with a treble clef and a key signature of one flat. The first measure contains a quarter note C, a quarter note B-flat, and a quarter note A. The second measure contains a quarter note G, a quarter note F, and a quarter note E. The string quartet (bottom four staves) continues with the same parts as the first system, each with a half note and a slur.

Handwritten musical score for the first system. The top staff is for the flute, showing a melodic line with various accidentals (flats, naturals, sharps) and slurs. The bottom four staves represent the piano accompaniment, with notes and rests corresponding to the flute's melody. The system is enclosed in a large blue bracket on the left side.

Handwritten musical score for the second system. The top staff continues the flute melody with more complex rhythmic patterns and accidentals. The piano accompaniment continues with simple harmonic support. The system is also enclosed in a large blue bracket on the left side.

Handwritten musical score for the first system. The top staff is for the flute, showing a complex rhythmic pattern with many sixteenth notes and slurs. The four woodwind parts below are in a more traditional style, with fewer notes and some rests. Dynamics include *mf* and *f*.

Handwritten musical score for the second system. The flute part continues with similar rhythmic complexity. A circled '4' is written at the end of the system. The woodwind parts are consistent with the first system. Dynamics include *f* and *mf*.



Handwritten musical score for the first system. The flute part (top staff) begins with a circled *f* and contains two measures of sixteenth-note runs with accidentals. The four horn parts (bottom staves) are marked *Hp* and feature sustained notes with dynamic markings *f* and *mf*.

Handwritten musical score for the second system. The flute part (top staff) contains two measures of sixteenth-note runs with various accidentals. The four horn parts (bottom staves) are marked *Hp* and feature sustained notes with dynamic markings *f* and *mf*.

Handwritten musical score for the first system. The top staff is a treble clef with a circled sharp sign (#). It contains a melodic line with slurs and ties. Below it are four staves for piano accompaniment, each starting with a dynamic marking: *mp* <, *mp* =, *mp* =, and *mp* =. The piano parts feature chords and sustained notes with slurs and ties, ending with a dynamic marking *f*.

Handwritten musical score for the second system, marked with a circled number 5. The top staff is a treble clef with various accidentals (flats and sharps) and slurs. Below it are four staves for piano accompaniment, each starting with a dynamic marking: *mp* =, *mp* =, *mp* =, and *mp* =. The piano parts feature chords and sustained notes with slurs and ties, ending with a dynamic marking *f*.

Handwritten musical score for a jazz ensemble, consisting of six staves. The notation is in blue ink on a five-line staff system. The first staff is a treble clef with a key signature of one sharp (F#). Above the first two staves, there are handwritten notes:  $b \overset{\wedge}{e} \cdot$  and  $\sharp \overset{\wedge}{e} \cdot$ . The score is divided into two measures by a vertical bar line. The first measure contains notes on the second, third, fourth, and fifth staves, with a slur over the first two staves. The second measure contains notes on the second, third, fourth, and fifth staves, with a slur over the first two staves. The notes are:  $b \overset{\wedge}{e} \cdot$ ,  $b \overset{\wedge}{e} \cdot$ ,  $b \overset{\wedge}{e} \cdot$ ,  $b \overset{\wedge}{e} \cdot$  in the first measure; and  $b \overset{\wedge}{e} \cdot$ ,  $b \overset{\wedge}{e} \cdot$ ,  $b \overset{\wedge}{e} \cdot$ ,  $b \overset{\wedge}{e} \cdot$  in the second measure.

Handwritten musical score for a jazz ensemble, consisting of six staves. The notation is in blue ink on a five-line staff system. The first staff is a treble clef with a key signature of one sharp (F#). Above the first staff, there are handwritten notes:  $b \overset{\wedge}{e} \cdot$ ,  $b \overset{\wedge}{e} \cdot$ ,  $b \overset{\wedge}{e} \cdot$ ,  $b \overset{\wedge}{e} \cdot$ ,  $b \overset{\wedge}{e} \cdot$ ,  $b \overset{\wedge}{e} \cdot$ . The score is divided into two measures by a vertical bar line. The first measure contains notes on the second, third, fourth, and fifth staves, with a slur over the first two staves. The second measure contains notes on the second, third, fourth, and fifth staves, with a slur over the first two staves. The notes are:  $b \overset{\wedge}{e} \cdot$ ,  $b \overset{\wedge}{e} \cdot$ ,  $b \overset{\wedge}{e} \cdot$ ,  $b \overset{\wedge}{e} \cdot$  in the first measure; and  $b \overset{\wedge}{e} \cdot$ ,  $b \overset{\wedge}{e} \cdot$ ,  $b \overset{\wedge}{e} \cdot$ ,  $b \overset{\wedge}{e} \cdot$  in the second measure.

Handwritten musical score for the first system. The top staff is for the flute, with a circled '6' above it. The key signature is one flat (B-flat). The flute part consists of a single note with a fermata. Below the flute are four staves for strings, each with a single note and a fermata. The word 'OFFEN' is written vertically between the string staves, indicating that the strings should be played open.

Handwritten musical score for the second system. The top staff is for the flute, with a circled '10' above it. The key signature is one sharp (F-sharp). The flute part consists of a melodic line with a fermata. Below the flute are four staves for strings. The first string staff has a circled '10' above it. The strings have some notes and accidentals, including a sharp sign.

Handwritten musical score for the first system. The top staff is for the flute, showing a melodic line with slurs and accents. The bottom three staves are for piano accompaniment, with chords and melodic fragments. The key signature has one flat (B-flat), and the time signature is 4/4. The system consists of four measures.

Handwritten musical score for the second system. The top staff is for the flute, featuring a complex solo with rapid sixteenth-note passages, slurs, and accents. The bottom three staves are for piano accompaniment, which consists of rests in all four measures. The key signature has one sharp (F#), and the time signature is 4/4. The system consists of four measures.

7

Handwritten musical score for the first system, consisting of five staves. The top staff is a treble clef with a circled '22' and a circled '2'. The second staff is a treble clef with a circled '2'. The third and fourth staves are bass clefs. The fifth staff is a double bass clef. The music features various notes, rests, and dynamic markings such as 'f' and 'ff'. There are also some handwritten annotations like '72' and '77'.

Handwritten musical score for the second system, consisting of five staves. The top staff is a treble clef with a circled '8' and a circled '8'. The second, third, and fourth staves are bass clefs. The fifth staff is a double bass clef. The music is mostly rests. There is a handwritten note 'dün + rit...' on the fourth staff.

Handwritten musical score for the first system. It features a flute part at the top and a woodwind section below. The flute part begins with a circled 'p' and '(b)', followed by a long note with a 'b' above it. The woodwind section includes parts for Clarinet (C), Bassoon (B), Saxophone (S), and Double Bass (D). Each instrument part has a circled 'pp' dynamic marking and contains rhythmic notation with accents and slurs. The system concludes with a double bar line.

Handwritten musical score for the second system. The flute part starts with a circled 'p' and a rhythmic pattern. The woodwind section continues with parts for Clarinet (C), Bassoon (B), Saxophone (S), and Double Bass (D), each with a circled 'pp' dynamic marking. The notation includes various rhythmic values, accents, and slurs. The system ends with a double bar line.



Handwritten musical score for the first system. The top staff is for the flute, showing a melodic line with various ornaments and slurs. The bottom four staves represent the piano accompaniment, with rhythmic patterns and chordal structures. The system is divided into two measures by a vertical bar line.

Handwritten musical score for the second system. The top staff continues the flute part, starting with a key signature change to one sharp (F#) and a time signature of 4/4. The piano accompaniment continues with similar rhythmic and harmonic patterns. The system is divided into two measures by a vertical bar line.

Handwritten musical score for the first system, consisting of five staves. The top staff is in treble clef and contains a series of notes with accidentals (sharps and flats) and slurs. The second staff is in alto clef and contains a long note with a slur and a dynamic marking of *mp*. The third, fourth, and fifth staves are in bass clef and contain notes with slurs and dynamic markings of *mp* and *p*.

Handwritten musical score for the second system, consisting of five staves. The top staff is in treble clef and contains notes with accidentals and slurs, ending with a circled number '9'. The second, third, fourth, and fifth staves are in bass clef and contain notes with slurs and dynamic markings of *fp*, *mp*, and *p*.

Handwritten musical score for the first system. The top staff is for the flute, showing a melodic line with various accidentals (sharps, flats, naturals) and dynamics (p, f). The bottom four staves represent a string quartet (Violin I, Violin II, Viola, and Cello/Double Bass), with notes and rests indicating harmonic support.

20

Handwritten musical score for the second system. The top staff is for the flute, showing a melodic line with various accidentals (sharps, flats, naturals) and dynamics (p, f). The bottom four staves represent a string quartet (Violin I, Violin II, Viola, and Cello/Double Bass), with notes and rests indicating harmonic support.

Handwritten musical score for the first system. The top staff is a treble clef with a key signature of one flat (B-flat). The flute part begins with a whole note chord of B-flat, D-flat, and F, followed by a melodic line: B-flat (quarter), D-flat (quarter), F (quarter), and a quarter rest. The piano accompaniment consists of four staves. The right hand plays chords: B-flat (quarter), D-flat (quarter), F (quarter), and a quarter rest. The left hand plays chords: B-flat (quarter), D-flat (quarter), F (quarter), and a quarter rest. The system concludes with a double bar line.

Handwritten musical score for the second system. The top staff is a treble clef with a key signature of one flat (B-flat). The flute part begins with a whole note chord of B-flat, D-flat, and F, followed by a melodic line: B-flat (quarter), D-flat (quarter), F (quarter), and a quarter rest. The piano accompaniment consists of four staves. The right hand plays chords: B-flat (quarter), D-flat (quarter), F (quarter), and a quarter rest. The left hand plays chords: B-flat (quarter), D-flat (quarter), F (quarter), and a quarter rest. The system concludes with a double bar line.

Handwritten musical score for the first system. The score is written on five staves. The top staff is a treble clef with a common time signature. The second staff is a treble clef with a key signature of one sharp (F#). The third and fourth staves are bass clefs with a key signature of one sharp (F#). The fifth staff is a bass clef with a key signature of one sharp (F#). The music consists of three measures. The first measure has a whole rest on the flute staff and a quarter note G on the piano staff. The second measure has a quarter note G on the flute staff and a quarter note G on the piano staff. The third measure has a quarter note G on the flute staff and a quarter note G on the piano staff. There are various dynamics and articulations throughout the piece.

Handwritten musical score for the second system. The score is written on five staves. The top staff is a treble clef with a common time signature. The second staff is a treble clef with a key signature of one sharp (F#). The third and fourth staves are bass clefs with a key signature of one sharp (F#). The fifth staff is a bass clef with a key signature of one sharp (F#). The music consists of three measures. The first measure has a whole rest on the flute staff and a quarter note G on the piano staff. The second measure has a quarter note G on the flute staff and a quarter note G on the piano staff. The third measure has a quarter note G on the flute staff and a quarter note G on the piano staff. There are various dynamics and articulations throughout the piece.

11

*sempre cresc.*

Handwritten musical score for the first system. It consists of a flute staff and a piano section with a grand staff (treble and bass clefs). The piano part has a vertical sequence of notes: C, B, A, G, F, E, D. The flute part has a melodic line starting in the second measure with a circled '41' and a dynamic marking 'pp'. The tempo/mood is marked 'sempre cresc.'.

Handwritten musical score for the second system. It consists of a flute staff and a piano section with a grand staff. The flute part has a complex melodic line with many notes and accidentals across three measures. The piano part has a vertical sequence of notes: C, B, A, G, F, E, D.

Handwritten musical score for the first system. The system consists of five staves. The top staff is a treble clef staff with a key signature of one flat (B-flat) and a common time signature. The second staff is a bass clef staff. The third and fourth staves are also bass clef staves, and the fifth staff is a bass clef staff. The flute part (second staff) begins with a dynamic marking of  $\text{f}$  and a breath mark  $\text{v}$ . The piano accompaniment (third, fourth, and fifth staves) consists of a single horizontal line with a bar line in the middle of the system.

Handwritten musical score for the second system. The system consists of five staves. The top staff is a treble clef staff with a key signature of one flat (B-flat) and a common time signature. The second staff is a bass clef staff. The third and fourth staves are also bass clef staves, and the fifth staff is a bass clef staff. The flute part (second staff) begins with a dynamic marking of  $\text{f}$  and a breath mark  $\text{v}$ . The piano accompaniment (third, fourth, and fifth staves) consists of a single horizontal line with a bar line in the middle of the system.

Handwritten musical score for the first system, consisting of five staves. The notation includes various musical symbols such as clefs, dynamics (f=), articulation marks (accents, slurs), and rhythmic patterns. The first staff is mostly empty with a few horizontal lines. The second and third staves contain vertical lines and slanted marks. The fourth staff features a complex rhythmic pattern with notes and accidentals (flats). The fifth staff is mostly empty with a few horizontal lines.

Handwritten musical score for the second system, consisting of five staves. The notation includes various musical symbols such as clefs, dynamics (ff=, fz=, ft=), articulation marks (accents, slurs), and rhythmic patterns. The first staff is mostly empty with a few horizontal lines. The second and third staves contain vertical lines and slanted marks. The fourth staff features a complex rhythmic pattern with notes and accidentals (flats). The fifth staff is mostly empty with a few horizontal lines. A circled number '12' is visible on the right side of the page.



Solo

Handwritten musical score for the first system. The top staff is a solo flute line with a complex melodic line, including a circled sharp sign. Below it are four staves for woodwinds (oboe, clarinet, bassoon, and contrabass), each with a sharp key signature. The woodwinds play sustained notes with various dynamics and articulations.

Handwritten musical score for the second system. The top staff is a solo flute line with a dense, rapid sixteenth-note passage. Below it are four staves for woodwinds (oboe, clarinet, bassoon, and contrabass), each with a sharp key signature. The woodwinds play sustained notes with various dynamics and articulations.

Handwritten musical score for the first system, consisting of five staves. The first staff is a treble clef with a key signature of one sharp (F#) and a common time signature. Above the first staff, there is a treble clef with a sharp sign and a fermata. The second staff contains rhythmic notation with eighth notes and beams. The third and fourth staves contain rhythmic notation with eighth notes and beams. The fifth staff contains rhythmic notation with eighth notes and beams. The bottom two staves are bass clefs, with the lower one containing a single note with a fermata.

Handwritten musical score for the second system, consisting of five staves. The first staff is a treble clef with a key signature of one sharp (F#) and a common time signature. Above the first staff, there is a treble clef with a sharp sign and a fermata. The second staff contains rhythmic notation with eighth notes and beams. The third and fourth staves contain rhythmic notation with eighth notes and beams. The fifth staff contains rhythmic notation with eighth notes and beams. The bottom two staves are bass clefs, with the lower one containing a single note with a fermata. A circled number '13' is written on the right side of the system.

14

frei Solo

$\text{ff}$

Da Capo

$\text{ff}$   $\frac{3}{4}$   
ad  $\text{ff}$

♩ CODA

( sempre div.)

Handwritten musical score for the first system, consisting of five staves. The top staff is in treble clef with a 7/8 time signature and a *pp* dynamic marking. It contains a melodic line with eighth and sixteenth notes, including a triplet of eighth notes. The lower four staves are in bass clef, each with a *pp* dynamic marking and a '+' sign above the first measure. They contain harmonic accompaniment with notes and rests, including a triplet of eighth notes in the second measure. The system is enclosed in a large blue bracket on the right side.

Handwritten musical score for the second system, consisting of five staves. The top staff is in treble clef with a 7/8 time signature and a *pp* dynamic marking. It contains a melodic line with eighth and sixteenth notes, including a triplet of eighth notes. The lower four staves are in bass clef, each with a *pp* dynamic marking and a '+' sign above the first measure. They contain harmonic accompaniment with notes and rests, including a triplet of eighth notes in the second measure. The system is enclosed in a large blue bracket on the right side.

frei

Handwritten musical score for four Horns (Hpp) and a Flute part. The score is written on five staves. The top staff is for the Flute, and the four staves below are for the Horns. The notation includes notes, rests, and dynamic markings. A large blue bracket on the right side of the score indicates a section. The word 'frei' is written at the top left.

Flute part:  $\approx \approx$   $b b b g g$   $b g b g$   $g \cdot$

Horn parts (Hpp):

- 1.  $b o \cdot$   $g \cdot$   $Lung g$
- 2.  $d \cdot$
- 3.  $g \cdot$
- 4.  $\# p p$   $b \frac{1}{2}$   $o \cdot$



Pos. Solo

Pos. Solo

Bass

Schlagw.

(P)

(P)

(P)

Handwritten musical notation for the first system. The top staff is in treble clef and the bottom staff is in bass clef. The music consists of several measures with various notes, accidentals (sharps, flats, naturals), and slurs. A vertical line separates the first measure from the rest of the system.

Handwritten musical notation for the second system. It continues with treble and bass clefs. The notation includes complex rhythmic patterns, slurs, and various accidentals. A vertical line is present in the middle of the system.

Handwritten musical notation for the third system. Above the staff, the text "(2. + pr. rit.....) aff" is written. To the right, a Coda symbol is present with the word "CODA" written next to it. The notation includes notes, slurs, and dynamic markings like "f".



*Solo*

pp

C

pp

S

pp

O

pp

B

pp

Handwritten musical score for the first system, consisting of five staves. The notation includes various notes, rests, and dynamic markings such as accents (^), slurs, and hairpins (< and >). The first staff has a treble clef and a key signature of one sharp (F#). The second and third staves have treble clefs and a key signature of one sharp (F#). The fourth and fifth staves have bass clefs and a key signature of one sharp (F#). The music is written in a fluid, handwritten style.

Handwritten musical score for the second system, consisting of five staves. The notation includes various notes, rests, and dynamic markings such as accents (^), slurs, and hairpins (< and >). The first staff has a treble clef and a key signature of one sharp (F#). The second and third staves have treble clefs and a key signature of one sharp (F#). The fourth and fifth staves have bass clefs and a key signature of one sharp (F#). The music is written in a fluid, handwritten style.

Handwritten musical score for the first system, consisting of five staves. The notation includes various notes, rests, and dynamic markings. The first staff begins with a treble clef and a key signature of one sharp (F#), with a dynamic marking of  $\#p = i$ . The second staff has a treble clef and a key signature of one flat (Bb), with a dynamic marking of  $\#pp = b \frac{d}{i}$ . The third staff has a treble clef and a key signature of one flat (Bb), with a dynamic marking of  $\#pp = \frac{1}{\sigma}$ . The fourth staff has a bass clef and a key signature of one flat (Bb), with a dynamic marking of  $\#pp = 9$ . The fifth staff has a bass clef and a key signature of one flat (Bb), with a dynamic marking of  $\#pp = \frac{1}{\sigma}$ . The system concludes with a double bar line.

Handwritten musical score for the second system, consisting of five staves. The notation includes various notes, rests, and dynamic markings. The first staff begins with a treble clef and a key signature of one flat (Bb), with a dynamic marking of  $\leq f$ . The second staff has a treble clef and a key signature of one flat (Bb), with a dynamic marking of  $\#p = i$ . The third staff has a treble clef and a key signature of one flat (Bb), with a dynamic marking of  $\#p = b \frac{1}{\sigma}$ . The fourth staff has a bass clef and a key signature of one flat (Bb), with a dynamic marking of  $\#p =$ . The fifth staff has a bass clef and a key signature of one flat (Bb), with a dynamic marking of  $\#p = b \frac{1}{\sigma}$ . The system concludes with a double bar line.

Handwritten musical score for the first system, consisting of four staves. The notation includes various rhythmic values, slurs, accents, and dynamic markings such as *f*. The music is written in a complex, expressive style.

Handwritten musical score for the second system, consisting of four staves. The notation includes various rhythmic values, slurs, accents, and dynamic markings such as *f*. The music is written in a complex, expressive style.

Handwritten musical score for the first system. The top staff is for the flute, starting with a forte (f) dynamic and a fermata. The four harp parts below are marked with dynamics such as f and ffp. The harp parts feature various chordal textures and melodic lines, with some parts including accents and slurs.

Handwritten musical score for the second system. The top staff is for the flute, starting with a mezzo-forte (mf) dynamic and a fermata. The four harp parts below are marked with dynamics such as f and include long sustained chords. The harp parts feature various chordal textures and melodic lines, with some parts including accents and slurs.

Handwritten musical score for the first system, consisting of five staves. The notation includes notes, rests, and dynamic markings such as  $\#p$  and  $\#pp$ . The first staff has a treble clef and a key signature of one sharp (F#). The second and third staves have treble clefs and a key signature of one flat (Bb). The fourth and fifth staves have bass clefs and a key signature of one flat (Bb). The music is divided into two measures by a vertical bar line.

Handwritten musical score for the second system, consisting of five staves. The notation includes notes, rests, and dynamic markings such as  $\#p$ . The first staff has a treble clef and a key signature of one sharp (F#). The second and third staves have treble clefs and a key signature of one flat (Bb). The fourth and fifth staves have bass clefs and a key signature of one flat (Bb). The music is divided into two measures by a vertical bar line.

Handwritten musical score for the first system, consisting of five staves. The notation includes various notes, rests, and dynamic markings. The first staff has a sharp sign (#) and a series of notes with a slur. The second staff has a #pp marking and notes with accents (^). The third staff has a #pp marking and notes with accents (^). The fourth staff has a #pp marking and notes with accents (^). The fifth staff has a #pp marking and notes with accents (^). The system is divided into two measures by a vertical bar line.

Handwritten musical score for the second system, consisting of five staves. The notation includes notes, rests, and dynamic markings. The first staff has a sharp sign (#) and notes with accents (^). The second staff has a pp marking and notes with accents (^). The third staff has a pp marking and notes with accents (^). The fourth staff has a pp marking and notes with accents (^). The fifth staff has a pp marking and notes with accents (^). The system is divided into two measures by a vertical bar line.

Handwritten musical score for the first system. The score is written on five staves. The top staff is for the Solo Flute, with a key signature of one flat and a common time signature. The second staff is for Oboe (O), the third for Flute (F), the fourth for Bassoon (B), and the fifth for Trombone (T). The Solo Flute part begins with a 'Solo' marking and a 'cresc.' (crescendo) marking. The accompaniment parts are mostly rests in the first two measures, followed by melodic lines in the third and fourth measures. The Solo Flute part features a complex melodic line with many accidentals and a hat symbol (^) over a note in the third measure.

Handwritten musical score for the second system. The score continues from the first system. The Solo Flute part features a complex melodic line with many accidentals and a hat symbol (^) over a note in the third measure. The accompaniment parts are mostly rests in the first two measures, followed by melodic lines in the third and fourth measures. The Solo Flute part features a complex melodic line with many accidentals and a hat symbol (^) over a note in the third measure.



Handwritten musical score for the first system, consisting of four staves. The notation includes various notes, rests, and dynamic markings such as  $\hat{p}$ ,  $\hat{f}$ , and  $\hat{ff}$ . The first staff has a melodic line with a slur and an accent. The second and third staves have similar melodic lines with slurs and accents. The fourth staff has a melodic line with a slur and an accent. The dynamic markings are placed below the notes.

Handwritten musical score for the second system, consisting of five staves. The notation includes complex rhythmic patterns, slurs, and dynamic markings such as  $\hat{p}$ ,  $\hat{f}$ , and  $\hat{ff}$ . The first staff has a complex rhythmic pattern with slurs and accents. The second, third, and fourth staves have similar rhythmic patterns with slurs and accents. The fifth staff has a rhythmic pattern with a slur and an accent. The dynamic markings are placed below the notes.

Handwritten musical score for the first system. The top staff is for the flute, showing a melodic line with various accidentals (flats, naturals, sharps) and a final triplet of notes with accents. Below it are four piano accompaniment staves, each with a dynamic marking of  $pp$  and a chord symbol:  $b^{\flat} b^{\flat} a$ ,  $\hat{=} \hat{=} \hat{=} b^{\flat} a$ ,  $\hat{=} \hat{=} \hat{=} b^{\flat} a$ , and  $b^{\flat} a$ .

Handwritten musical score for the second system. The top staff is for the flute, showing a melodic line with various accidentals and a final triplet of notes with accents. Below it are four piano accompaniment staves, each with a dynamic marking of  $pp$  and a chord symbol:  $\hat{=} \hat{=} \hat{=} b^{\flat} a$ ,  $\hat{=} \hat{=} \hat{=} b^{\flat} a$ ,  $\hat{=} \hat{=} \hat{=} b^{\flat} a$ , and  $\hat{=} \hat{=} \hat{=} b^{\flat} a$ . The word "din" is written below the second piano staff.

Handwritten musical score for the first system. The top staff is for a horn, starting with a half note G4 marked *Hp* and an accent (^), followed by a half note F4 marked *pp* with a flat sign (b) above it. The middle and bottom staves are for piano, with various chords and melodic lines. The bottom staff includes a circled 'f' and a circled 'p'.

Handwritten musical score for the second system. The top three staves are mostly empty with rests. The bottom staff contains a piano accompaniment with chords and a melodic line. On the right side, there are performance instructions: *2. + G.P.*, *D.C.*, and *al* with a circled 'p' below it.



(mit Hall)

Flöte  
ganz frei

harp

C  
o  
n  
S  
o  
R  
p.

fats [3]

Presto

Solo w. Solo

Handwritten musical notation on a five-line staff. It begins with a treble clef and a common time signature (C). The first measure contains a dynamic marking 'mp' and a series of rhythmic stems. The second measure continues with stems. The third measure features a chord with a sharp sign and a slur above it. The fourth measure has another chord with a sharp sign and a slur above it. Below the staff, there is a double bar line and the word 'mesa.' with an arrow pointing to the right.

Handwritten musical notation on a five-line staff. It contains rhythmic stems in the first two measures, followed by two measures with chords marked with sharp signs and slurs above them.

Handwritten musical notation on a five-line staff. It starts with a circled 'f' dynamic marking and a slur. The first two measures contain rhythmic stems, followed by two measures with chords marked with sharp signs and slurs above them.

Handwritten musical notation on a five-line staff. It begins with a circled 'ff' dynamic marking and a slur. The first two measures contain rhythmic stems, followed by two measures with chords marked with sharp signs and slurs above them.

Handwritten musical notation on a five-line staff. It features four measures of music, each with a number above it (1, 2, 3, 4). The first two measures contain rhythmic stems, while the last two contain chords marked with sharp signs and slurs above them.

Handwritten musical score for the first system, consisting of four staves. The notation includes quarter notes, eighth notes, and rests, with various accidentals (sharps, flats, naturals) and articulation marks (accents, slurs). The first staff begins with a treble clef and a key signature of one sharp (F#). The second staff has a treble clef and a key signature of one sharp. The third and fourth staves have bass clefs and a key signature of one sharp. The music is organized into four measures, with a large brace on the left side of the first three staves.

Handwritten musical score for the second system, consisting of four staves. The notation includes quarter notes, eighth notes, and rests, with various accidentals (sharps, flats, naturals) and articulation marks (accents, slurs). The first staff begins with a treble clef and a key signature of one sharp. The second staff has a treble clef and a key signature of one sharp. The third and fourth staves have bass clefs and a key signature of one sharp. The music is organized into four measures, with a large brace on the left side of the first three staves.

Handwritten musical score for the first system, consisting of four staves. The notation includes various notes, accidentals (sharps, flats, double flats), and slurs. The first staff has notes with accidentals:  $b^b q$ ,  $b$ ,  $i$ ,  $i$ ,  $i$ ,  $i$ ,  $\#i$ ,  $q$ ,  $\#i$ ,  $i$ ,  $i$ ,  $bq$ . The second staff has notes:  $b^b q$ ,  $b^b d$ ,  $d$ ,  $b^b d$ ,  $q$ ,  $\#q$ ,  $d$ ,  $d$ . The third staff has notes:  $b^b q$ ,  $b^b f$ ,  $f$ ,  $b^b f$ ,  $f$ ,  $q$ ,  $\#q$ ,  $i$ ,  $i$ ,  $i$ ,  $i$ ,  $bq$ ,  $b^b q$ . The fourth staff has notes:  $b^b o$ ,  $b^b o$ ,  $b^b o$ ,  $b^b o$ .

Handwritten musical score for the second system, consisting of four staves. The notation includes notes, accidentals, and slurs. The first staff has notes:  $b^b o$ ,  $b^b o$ . The second staff has notes:  $b^b o$ . The third staff has notes:  $b^b o$ . The fourth staff has notes:  $b^b o$ . The second measure of the first three staves has notes:  $b^b o$ ,  $b^b o$ ,  $b^b o$ . The second measure of the fourth staff has notes:  $b^b o$ ,  $b^b o$ .

Handwritten musical score for the first system, consisting of five staves. The notation includes various notes, rests, and dynamic markings such as accents (^) and hairpins (> and <). The first staff has a whole rest. The second and third staves show melodic lines with slurs and accents. The fourth staff has a whole rest. The fifth staff shows a melodic line with a slur and an accent.

Handwritten musical score for the second system, consisting of five staves. The notation continues from the first system, featuring various notes, rests, and dynamic markings. The first staff has a whole rest. The second and third staves show melodic lines with slurs and accents. The fourth staff has a whole rest. The fifth staff shows a melodic line with a slur and an accent.





Solo Flöte

Handwritten musical notation for the first system. The top staff is in treble clef and contains a flute melody with various notes, rests, and slurs. The bottom staff is in bass clef and contains a piano accompaniment starting with a *pp* dynamic marking. A large bracket spans across both staves, and the word "Block" with a circled "A" is written in the center.

Handwritten musical notation for the second system. The top staff continues the flute melody with slurs and accents. The bottom staff continues the piano accompaniment. A large bracket spans across both staves, and the word "Block" with a boxed "A" is written in the center.

Handwritten musical notation for the third system. The top staff concludes the flute melody with slurs and accents. The bottom staff concludes the piano accompaniment. A large bracket spans across both staves, and the word "Block A" is written in the center.

Handwritten musical score for the first system. The top staff is for the flute, showing a melodic line with various accidentals (sharps, flats, naturals) and slurs. Below it are four staves for piano accompaniment, each starting with a dynamic marking of  $mp =$  and containing chords and some melodic fragments. The system is divided into four measures by vertical bar lines.

Handwritten musical score for the second system. The top staff is for the flute, continuing the melodic line with slurs and accidentals. Below it are four staves for piano accompaniment, each starting with a dynamic marking of  $mp =$  and containing sustained chords. The system is divided into four measures by vertical bar lines.

Handwritten musical score for five instruments (Flute, Clarinet, Bassoon, Trumpet, Trombone) in a key of D major. The score is divided into two measures. The first measure contains notes with various accidentals (sharps, flats, naturals) and slurs. The second measure continues the melodic lines. A bracket labeled "Block B1" spans the bottom of the second measure.

Handwritten musical score for a Flute Solo. The notation includes a treble clef, a circled sharp sign, and a circled "B" in parentheses. The melody consists of several phrases with complex accidentals and slurs. A bracket labeled "Block B" spans the bottom of the score.

Handwritten musical notation for two blocks of music. The top staff contains notes with accidentals and slurs. The bottom staff has two sections labeled "Block (B)".

Handwritten musical notation for a multi-staff piece. It includes notes, slurs, and dynamic markings like "Hpp =". There are some handwritten annotations on the right side.

Handwritten musical score for the first system, featuring five staves. The top staff begins with a treble clef, a key signature of one sharp (F#), and a 3/4 time signature. The notation consists of rests on all staves for the first four measures. The fifth measure contains a series of notes on the bottom staff, starting with a dynamic marking of *pp* and a *cresc.* instruction. The notes are grouped with brackets and include accents.

Handwritten musical score for the second system, featuring five staves. The notation is primarily rests across all staves. The word "offen" is written in the first three measures of the top three staves. In the fourth measure, a large circle encompasses the word "cresc." written across the second and third staves. The bottom two staves contain notes with dynamic markings: *pp* in the first measure, *p* in the second, and *p* in the third. The notes are grouped with brackets and include accents.

Handwritten musical score for the first system, consisting of four staves. The top two staves are mostly empty with rests. The bottom two staves contain musical notation. The first staff of the bottom pair has notes G4, A4, and B4 with a slur and an accent. The second staff has notes G4, Bb4, and A4 with a slur and an accent. The third staff has notes G4, A4, and B4 with a slur and an accent. The fourth staff has notes G4, Bb4, and A4 with a slur and an accent. There are dynamic markings  $f$  and  $mf$  throughout.

Handwritten musical score for the second system, consisting of four staves. The top staff is labeled "2. TR. Solo" and has notes G4, A4, and B4 with a slur and an accent, and a dynamic marking  $f$ . The second staff has notes G4, Bb4, and A4 with a slur and an accent, and a dynamic marking  $f$ . The third staff has notes G4, A4, and B4 with a slur and an accent, and a dynamic marking  $f$ . The fourth staff has notes G4, Bb4, and A4 with a slur and an accent, and a dynamic marking  $f$ . There are also dynamic markings  $mf$  and  $ff$  in the system.



Handwritten musical score for the first system, consisting of five staves. The notation includes notes, rests, and dynamic markings. The first staff is marked "1+2. soli" and "ff". The second staff is marked "ff". The third staff is marked "ff". The fourth staff is marked "ff". The fifth staff is marked "ff". The score is divided into two measures by a vertical line.

Handwritten musical score for the second system, consisting of five staves. The notation includes notes, rests, and dynamic markings. The first staff is marked "Solo" and "ff". The second staff is marked "ff". The third staff is marked "ff". The fourth staff is marked "ff". The fifth staff is marked "ff". The score is divided into four measures by vertical lines. A box labeled "CODA" is present in the top right corner of the system.



Handwritten musical score for the first system, consisting of five staves. The notation includes notes, rests, and various musical markings such as slurs, accents, and dynamic markings. The first staff begins with a circled number '52'. The notes are written in a style that suggests a specific rhythmic pattern, with some notes having stems pointing downwards. The second staff contains notes with stems pointing upwards and downwards, and includes a sharp sign. The third and fourth staves have notes with stems pointing downwards and upwards, respectively, and include sharp signs. The fifth staff is mostly empty, with a few notes and a sharp sign. The system is enclosed in a large bracket on the left side.

Handwritten musical score for the second system, consisting of five empty staves. The staves are arranged vertically and are completely blank, with no notes or markings.

Handwritten musical score for four staves. The first staff has a circled number "28" at the beginning. The notation includes various notes, rests, and accidentals (sharps and flats) across four measures. The notes are connected by slurs, and there are some dynamic markings like accents (^) and breath marks (z). The staves are connected by vertical bar lines.

Handwritten musical score for four staves, mostly empty. The first staff has a treble clef. The second and third staves have treble clefs with a sharp sign. The fourth staff has a bass clef. There are some horizontal lines and a handwritten word "dün" with a slur above it in the fourth measure of the bottom staff.



lange wech...

The first system of the handwritten musical score consists of five staves. The top four staves are for the flute, and the bottom staff is for the bass. The flute part begins with a circled 'p' (piano) dynamic marking. The melody is written in a 2/4 time signature and spans four measures. The notes are:  $b_1$ ,  $b_2$ ,  $g_2$ ,  $b_2$  (first measure);  $g_2$ ,  $\sharp g_2$ ,  $g_2$  (second measure);  $g_2$ ,  $\sharp g_2$ ,  $g_2$  (third measure);  $b_1$ ,  $b_2$ ,  $\sharp g_2$ ,  $g_2$  (fourth measure). The bass line starts with a circled 'p' and a double bar line, followed by a long slur over four measures with notes:  $b_1$ ,  $b_1$ ,  $\emptyset$ ,  $b_1$ .

The second system of the handwritten musical score consists of five staves, identical in layout to the first system. The flute part begins with a circled 'p' dynamic marking. The melody is written in a 2/4 time signature and spans four measures. The notes are:  $b_1$ ,  $b_2$ ,  $g_2$ ,  $b_2$  (first measure);  $g_2$ ,  $\sharp g_2$ ,  $g_2$  (second measure);  $g_2$ ,  $\sharp g_2$ ,  $g_2$  (third measure);  $b_1$ ,  $b_2$ ,  $\sharp g_2$ ,  $g_2$  (fourth measure). The bass line starts with a circled 'p' and a double bar line, followed by a long slur over four measures with notes:  $b_1$ ,  $\sharp g_2$ ,  $b_1$ ,  $\emptyset$ .



Handwritten musical score for the first system. The top staff is in treble clef with a key signature of one flat (B-flat) and a common time signature. It contains a melody line with notes such as  $d$ ,  $\sharp d$ ,  $\flat d$ ,  $\flat b$ ,  $\flat a$ ,  $\flat g$ ,  $\flat f$ ,  $\flat e$ ,  $\flat d$ ,  $\flat c$ ,  $\flat b$ ,  $\flat a$ ,  $\flat g$ ,  $\flat f$ ,  $\flat e$ ,  $\flat d$ ,  $\flat c$ ,  $\flat b$ ,  $\flat a$ ,  $\flat g$ ,  $\flat f$ ,  $\flat e$ ,  $\flat d$ . The middle staff is in bass clef with a key signature of one flat and a common time signature, containing chords and notes like  $\flat d$ ,  $\flat b$ ,  $\flat a$ ,  $\flat g$ ,  $\flat f$ ,  $\flat e$ ,  $\flat d$ . The bottom staff is in bass clef with a key signature of one flat and a common time signature, containing chords and notes like  $\flat d$ ,  $\flat b$ ,  $\flat a$ ,  $\flat g$ ,  $\flat f$ ,  $\flat e$ ,  $\flat d$ . Dynamics include  $f$ .

Handwritten musical score for the second system. The top staff is in treble clef with a key signature of one flat and a common time signature. It contains a melody line with notes such as  $\sharp f$ ,  $\sharp e$ ,  $\sharp d$ ,  $\sharp c$ ,  $\sharp b$ ,  $\sharp a$ ,  $\sharp g$ ,  $\sharp f$ ,  $\sharp e$ ,  $\sharp d$ ,  $\sharp c$ ,  $\sharp b$ ,  $\sharp a$ ,  $\sharp g$ ,  $\sharp f$ ,  $\sharp e$ ,  $\sharp d$ ,  $\sharp c$ ,  $\sharp b$ ,  $\sharp a$ ,  $\sharp g$ ,  $\sharp f$ ,  $\sharp e$ ,  $\sharp d$ . The middle staff is in bass clef with a key signature of one flat and a common time signature, containing chords and notes like  $\sharp f$ ,  $\sharp e$ ,  $\sharp d$ ,  $\sharp c$ ,  $\sharp b$ ,  $\sharp a$ ,  $\sharp g$ ,  $\sharp f$ ,  $\sharp e$ ,  $\sharp d$ . The bottom staff is in bass clef with a key signature of one flat and a common time signature, containing chords and notes like  $\sharp f$ ,  $\sharp e$ ,  $\sharp d$ ,  $\sharp c$ ,  $\sharp b$ ,  $\sharp a$ ,  $\sharp g$ ,  $\sharp f$ ,  $\sharp e$ ,  $\sharp d$ . Dynamics include  $f$ .

Handwritten musical score for the first system. The notation includes various notes, rests, and accidentals (sharps, flats, naturals). A 'Solo' marking is present in the second bass staff. The score is divided into measures by vertical bar lines.

A second system of handwritten musical notation, consisting of five staves with various clefs and a double bar line at the bottom. The staves contain mostly rests and some faint markings, suggesting a continuation of the piece.

ff=

C (P)

b

N (P)

S

D

R (P)

D (P)

Block [C]

Flöte Solo!

Block [C]



Handwritten musical notation for the first system. The treble clef has a sharp sign. The time signature is common time. The melody consists of four measures with various accidentals (flats, sharps, naturals). A large bracket spans the first two measures, and another bracket spans the last two. The bass staff contains the handwritten text "Block [C] <".

Handwritten musical notation for the second system. The treble clef has a flat sign. The time signature is common time. The melody consists of four measures with various accidentals. A large bracket spans the first two measures, and another bracket spans the last two. The bass staff contains the handwritten text "Block [C] < cresc.".

Handwritten musical notation for the third system. The treble clef has a flat sign. The time signature is common time. The melody consists of four measures with various accidentals. A large bracket spans the first two measures, and another bracket spans the last two. The bass staff contains the handwritten text "mf < = Block [C]".



Handwritten musical score for the first system, consisting of five staves. The notation includes various notes, rests, and dynamic markings. The first staff has a treble clef and a key signature of one sharp (F#). The second and third staves have a treble clef and a key signature of one sharp (F#). The fourth and fifth staves have a bass clef and a key signature of one sharp (F#). The notation is dense with notes and rests, and includes a large bracket spanning across the first two staves.

Handwritten musical score for the second system, consisting of five staves. The notation includes various notes, rests, and dynamic markings. The first staff has a treble clef and a key signature of one sharp (F#). The second and third staves have a treble clef and a key signature of one sharp (F#). The fourth and fifth staves have a bass clef and a key signature of one sharp (F#). The notation is dense with notes and rests, and includes a large bracket spanning across the first two staves.



Handwritten musical score for the first system. It consists of five staves. The top four staves contain rests. The bottom staff (bass line) contains rhythmic notation: 1 1 1 1, followed by a bar with a greater-than sign (>), then 1 1 2 1 2, then 1 1 1 1, then a bar with a greater-than sign (>) and 'pp', then 1 1 2 1 2, and finally 1 1 1 1. A triangle symbol is written above the second measure of the bass line.

Handwritten musical score for the second system. It consists of five staves. The top staff contains rhythmic notation: b9 9 9, followed by a bar with a bracket and 'pp', then b9 2 b9 b9, then b9 b9 9 3 3, and finally b9 b9 9 3 3. The bottom staff (bass line) contains rhythmic notation: 1 1 2 1 2, then 1 1 1 1, then 1 1 2 1 2, and finally 1 1 1 1. The first measure of the bass line is marked with 'pp'.

Flöte Solo

Handwritten musical score for Flute Solo, Bass, and Snare Drum. The Flute part is in treble clef with a key signature of one flat (B-flat) and a common time signature. It features a melodic line with slurs, accents, and dynamic markings such as  $p$  and  $f$ . The Bass part is in bass clef with a common time signature, showing a simple accompaniment. The Snare Drum part is in bass clef with a common time signature, using rhythmic notation (vertical lines) to indicate drum hits.

Compte basse...

Handwritten musical score for Compe basse... The notation is similar to the first system, with a treble clef for the main melody and a bass clef for the accompaniment. It includes slurs, accents, and dynamic markings like  $f$ . The rhythmic notation for the snare drum is also present.

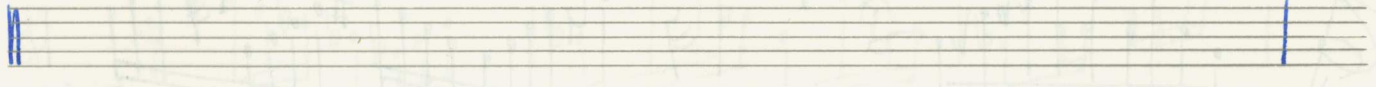
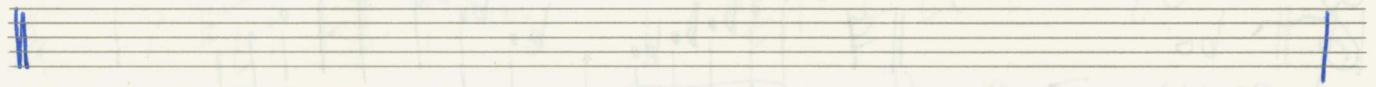
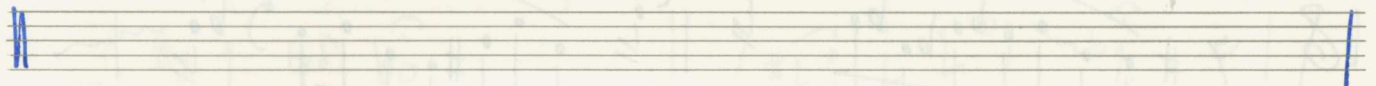
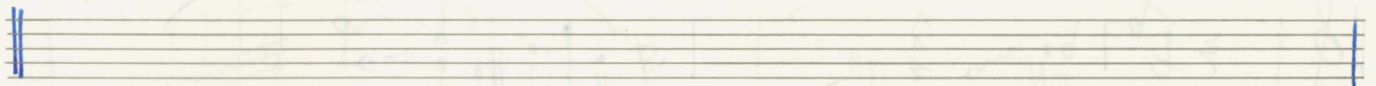
Handwritten musical score for a third system, continuing the piece. It features the same instrumental parts and notation style as the previous systems, with slurs, accents, and dynamic markings.

Handwritten musical notation for the first system, consisting of three staves. The top staff is in treble clef with a key signature of one sharp (F#) and a common time signature (C). It contains four measures of music with notes and rests, including slurs and accents. The middle staff is in alto clef with a common time signature (C) and contains rests. The bottom staff is in bass clef with a common time signature (C) and contains rhythmic notation (numbers 1, 2, 7) and rests.

Handwritten musical notation for the second system, consisting of three staves. The top staff is in treble clef with a key signature of one sharp (F#) and a common time signature (C). It contains four measures of music with notes and rests, including slurs and accents. The middle staff is in alto clef with a common time signature (C) and contains rests. The bottom staff is in bass clef with a common time signature (C) and contains rhythmic notation (numbers 1, 2, 7) and rests.

Handwritten musical notation for the third system, consisting of three staves. The top staff is in treble clef with a key signature of one sharp (F#) and a common time signature (C). It contains four measures of music with notes and rests, including slurs and accents. The middle staff is in alto clef and contains rests. The bottom staff is in bass clef with a common time signature (C) and contains rhythmic notation (numbers 1, 2, 7) and rests.

(freies Solo (Schlagwerk) mit Ampere drum + vibram)







string. cresc.

accel. + cresc. (ins Tempo 1 übergehen)

♩ CODA

Handwritten musical score for the first system. It features five staves with complex notation including accidentals, dynamics (pp, f), and articulation marks. The notation is dense and includes various rhythmic and melodic elements.

Handwritten musical score for the second system. It continues the notation from the first system, featuring five staves with complex notation including accidentals, dynamics (pp, f), and articulation marks. The notation is dense and includes various rhythmic and melodic elements.

Handwritten musical score for four staves. Each staff begins with a treble clef, a key signature of one flat (B-flat), and a common time signature. The first staff has a dynamic marking of  $pp$  with a sharp sign. Each staff contains a single note with an accent (^) and a slur above it, followed by a long horizontal line across the staff. Vertical bar lines are present. The bottom staff has a double bar line at the end.

Handwritten musical score for five staves. The first four staves have treble clefs and a key signature of one flat. The fifth staff has a bass clef and the word "Solo" written below it. The first four staves contain single notes with slurs. The fifth staff contains a complex melodic line with various accidentals (sharps, flats, naturals) and slurs. The piece concludes with a wavy line and the text "Fine des Konz."