

Notenheft



Satz ①

Mod. assai (Andante)

2TR. in C (natürlich) nur in B

Hr. in F (in C natürlich) nur in F

1 Pos. Trombe

Bass

Schlagwerk

4/4

Ⓟ | 1 2 3 4

7

Handwritten musical score for the first system. It consists of a grand staff with treble and bass clefs. The music is written in blue ink and includes notes, rests, and dynamic markings such as 'f' and 'p'. There are also some handwritten annotations like '1' and '2' above notes.

Handwritten musical score for the second system. It consists of a grand staff with treble and bass clefs. The music is written in blue ink and includes notes, rests, and dynamic markings such as 'f' and 'p'. There are also some handwritten annotations like '1' and '2' above notes.

2

Handwritten musical score for three staves. The top staff has notes with accidentals (flats) and dynamic markings like "Hp =". The middle and bottom staves have notes with accidentals and dynamic markings like "Hp =". There are large blue brackets spanning across the staves.

3

4

Handwritten musical score for three staves. The top two staves are mostly empty with horizontal lines. The bottom staff has notes with accidentals and the word "Solo" written above. There are vertical arrows pointing up and down on the right side of the staves.

5

1

2

H

Pos

Tuba

Block A

Solo
TROMPA

Block A

7

Solo

Handwritten musical score for the first system. It features a treble clef staff with a key signature of one sharp (F#) and a 6/8 time signature. The melody consists of eighth and sixteenth notes. A dynamic marking 'f' is present. The piano part is mostly empty, with a large bracket and the word 'Block' circled in the second measure. Above the piano staff, there are some scribbles and a circled '7'.

Handwritten musical score for the second system. The treble clef staff continues the melody with accents (^) and a triplet of eighth notes. The piano part has a circled '7' in the first measure and a circled '7' with an arrow pointing to it in the second measure. The word 'Block' is circled in the second measure. A circled '8' is at the end of the system.

Handwritten musical score for measures 62-64. The score is written on a grand staff with three systems of staves. Measure 62 is circled in the top left. The notation includes various notes, rests, and slurs, with some notes marked with a '1' above them. The key signature has one sharp (F#).

Handwritten musical score for measures 65-67. The score is written on a grand staff with three systems of staves. Measure 65 is circled in the top right. The notation includes various notes, rests, and slurs, with some notes marked with a '^' above them. The key signature has one sharp (F#).

Handwritten musical score for a string quartet. The score consists of four staves. The first staff is a treble clef with a circled '92' at the end. The second and third staves are alto clefs. The fourth staff is a bass clef. The music is mostly rests, with some notes in the fourth staff. The notes in the fourth staff are grouped in threes, with a circled '91' above the first group. The notes are: G2, F2, E2; G2, F2, E2; G2, F2, E2; G2, F2, E2. There are also some notes in the second and third staves. The word 'Solo' is written above the first group of notes. The word 'din' is written below the first group of notes. A circled 'P' is written below the second group of notes.

Handwritten musical score for a string quartet. The score consists of four staves. The first staff is a treble clef with a circled '92' at the end. The second and third staves are alto clefs. The fourth staff is a bass clef. The music is mostly rests, with some notes in the first and fourth staves. The notes in the first staff are: G2, F2, E2; G2, F2, E2; G2, F2, E2; G2, F2, E2. The notes in the fourth staff are: G2, F2, E2; G2, F2, E2; G2, F2, E2; G2, F2, E2. The word 'Pompere cresc.' is written above the first group of notes. A circled 'P' is written below the first group of notes. A circled '92' is written above the second group of notes.

Handwritten musical score for the first system, consisting of five staves. The notation includes various notes, rests, and dynamic markings such as $f=$. The first two staves are grouped with a brace on the left. The third staff has a circled $f=$ marking. The fourth and fifth staves have dynamic markings f and f respectively. The score is written in blue ink on a white background.

Handwritten musical score for the second system, consisting of five staves. The notation includes various notes, rests, and dynamic markings. A section is labeled "Pizzicato (B)" with a circled B and a circled 11 in the top right corner. The first two staves are grouped with a brace on the left. The third staff has a circled $f=$ marking. The fourth and fifth staves have dynamic markings f and f respectively. The score is written in blue ink on a white background.

Handwritten musical score for the first system. The notation is on a treble clef staff with a key signature of one sharp (F#). The piece is marked "Solo" and "90: pos." with a circled sharp sign. The music consists of several measures with notes, rests, and slurs. There are also some vertical lines and a circled sharp sign below the staff.

Handwritten musical score for the second system. The notation is on a treble clef staff with a key signature of one sharp (F#). The piece is marked "Solo". The music continues from the first system with notes, rests, and slurs. There are also some vertical lines and a circled sharp sign below the staff.

Handwritten musical score for the first system. It features a treble clef, a key signature of one flat (B-flat), and a 4/4 time signature. The music consists of a single melodic line with various notes, rests, and accidentals across three measures.

Handwritten musical score for the second system. It features a treble clef, a key signature of one flat (B-flat), and a 4/4 time signature. The music consists of a single melodic line with various notes, rests, and accidentals across two measures.

Handwritten musical score on five staves. The top two staves are blank. The third staff contains handwritten musical notation consisting of two measures. The first measure has a slur over a series of notes with various accidentals (sharps and flats). The second measure continues the notation with similar notes and accidentals. The bottom two staves are blank.

Handwritten musical score on five staves. The top two staves are blank. A circled number "12" is written above the first measure of the third staff. The third staff contains handwritten musical notation for two measures. The first measure has a slur over notes with accidentals. The second measure has notes with accidentals and some additional markings. The bottom two staves are blank.

Handwritten musical score for measures 12 and 13. The score consists of five staves. The first four staves are mostly empty, with some horizontal lines indicating rests. The fifth staff contains a melodic line starting with a circled '12' at the beginning. Measure 12 features a triplet of eighth notes followed by a quarter note. Measure 13 contains a series of eighth notes. A circled '13' is written above the staff at the end of the second measure.

Handwritten musical score for measures 14 and 15. The score consists of five staves. The first four staves are empty. The fifth staff contains two measures, each enclosed in large parentheses and labeled 'Block (B)'. A circled '14' is written above the first measure, and a circled '15' is written above the second measure.



16

Handwritten musical score for the first system, measures 16-19. It features five staves. The bottom staff contains a piano accompaniment with chords and a melodic line starting with the word "Sch". The other staves are mostly empty, with some horizontal lines indicating rests or ties.

dein

(2. x ev. mit Holm)

17

Handwritten musical score for the second system, measures 20-23. It features five staves. The top staff has a melodic line with notes and rests, starting with the word "dein". The other staves contain piano accompaniment with chords and melodic fragments. The system concludes with a double bar line and a fermata-like symbol.

(ruhig) $\frac{4}{4}$

18

Handwritten musical score for page 18, measures 18-19. The score is written on a grand staff with treble and bass clefs. The key signature is one sharp (F#). The time signature is 4/4. The tempo/mood is indicated as "(ruhig)". The music features a melodic line in the right hand with slurs, accents, and triplets. The left hand has a bass line with slurs and accents. The first measure of the system is measure 18, and the second is measure 19. The notation includes various accidentals and dynamic markings.

breit

19

20

Handwritten musical score for page 20, measures 20-21. The score is written on a grand staff with treble and bass clefs. The key signature is one sharp (F#). The tempo/mood is indicated as "breit". The music features a melodic line in the right hand with slurs, accents, and triplets. The left hand has a bass line with slurs and accents. The first measure of the system is measure 20, and the second is measure 21. The notation includes various accidentals and dynamic markings. The word "Solo/frei" is written above the first measure of the second system.

breit

21

Handwritten musical score for page 21. The score is written on five staves. The top four staves are for woodwinds (flute, oboe, clarinet, bassoon) and the fifth is for strings. The music is in 3/4 time and marked 'breit'. The first measure shows woodwinds with notes and accents. The second measure is mostly rests. The third measure features a tuba part with a triplet of notes and a circled 'p' dynamic marking.

22 breit

Handwritten musical score for page 22. The score is written on five staves. The top four staves are for woodwinds (flute, oboe, clarinet, bassoon) and the fifth is for strings. The music is in 3/4 time and marked 'breit'. The first measure shows woodwinds with notes and accents. The second measure is mostly rests. The third measure features a tuba part with a triplet of notes and a circled 'p' dynamic marking.

51 frei

23

breit

24

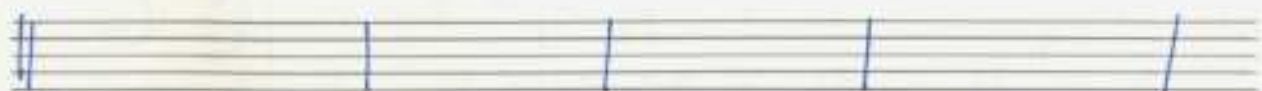
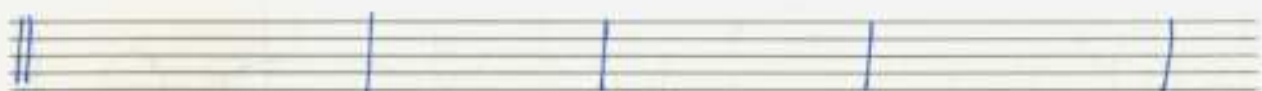
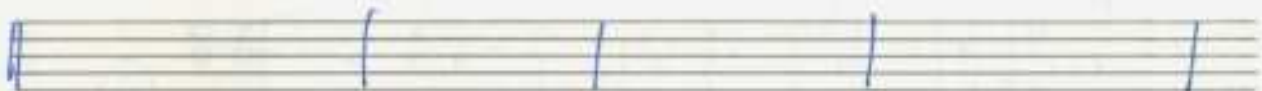
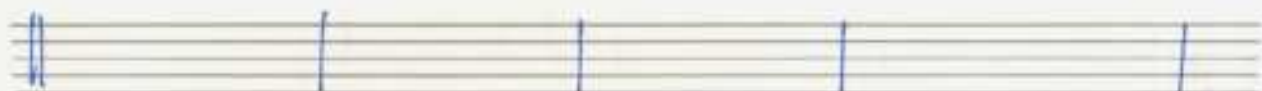
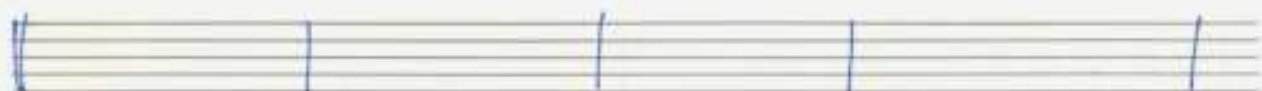
Schlus. Solo (frei (accel. cresc.))

accel.

(Presto)

(freies Solo) ad. lib.

Altunmühtliche schwächer werden und überleben
zu D.C. al ϕ



D.C.
al
Final
 ϕ

Coda

Handwritten musical score for the first system of a Coda section. It features five staves. The top three staves are grouped with a brace on the left. The first staff has a circled '2' and a sharp sign. The second staff has a sharp sign and a circled '2'. The third staff has a sharp sign. The bottom two staves have sharp signs. The music consists of two measures. The first measure has a slur over the first two staves. The second measure has a slur over the first three staves. Dynamics include 'Hp = #' and 'Hp = #'. There are various accidentals and accents throughout.

Handwritten musical score for the second system of a Coda section. It features five staves. The top three staves are grouped with a brace on the left. The first staff has a circled '7'. The second staff has a circled '7'. The third staff has a circled '7'. The bottom two staves have circled '7's. The music consists of two measures. The first measure has a slur over the first three staves. The second measure has a slur over the first four staves. Dynamics include 'Hp = #' and 'Hp = #'. There are various accidentals and accents throughout.

Handwritten musical score for a string quartet, measures 1-3. The score is written in G major (one sharp) and 3/4 time. The instruments are Violin I, Violin II, Viola, and Cello/Double Bass. The first measure is marked *ppp* and contains rests for all instruments. The second and third measures feature melodic lines in the strings, with accents and slurs. The Cello/Double Bass part is marked *Solo* and *pp*.

Handwritten musical score for a string quartet, measures 4-6. The score is in G major and 3/4 time. The instruments are Violin I, Violin II, Viola, and Cello/Double Bass. The first three measures contain rests for all instruments. The fourth measure is marked *ppp* and features melodic lines in all instruments, with accents and slurs. The Cello/Double Bass part is marked *ppp*. The word *lunga* is written above the fourth measure, and *Fine* is circled at the end of the section.

Satz 2

(♩) sehr ruhig

Handwritten musical score for the first system of 'Satz 2'. It features a grand staff with five staves. The first four staves are for strings (Violin I, Violin II, Viola, and Cello/Double Bass) and the fifth is for piano. The music is in 3/4 time and marked 'sehr ruhig'. The first two measures are rests for all instruments. The third measure begins with a piano (pp) dynamic. The string parts play sustained notes: Violin I (D4), Violin II (D4), Viola (D4), and Cello/Double Bass (D3). The piano part has a melodic line starting on D4. The system ends with a double bar line.

Handwritten musical score for the second system of 'Satz 2'. It continues the grand staff from the first system. The piano part has a more active melodic line with slurs and accents. The string parts continue with sustained notes, some with slurs. The system ends with a double bar line. A circled '2' is written in the right margin.

Handwritten musical score for the first system. It consists of four staves. The top two staves are treble clefs, and the bottom two are bass clefs. The notation includes notes, rests, and dynamic markings such as *f* and *p*. There are also some handwritten annotations like "Solo" and "Pos." with arrows pointing to specific notes. The score is divided into three measures by vertical bar lines.

Handwritten musical score for the second system. It consists of four staves. The notation continues from the first system, featuring notes, rests, and dynamic markings like *f* and *p*. There are also some handwritten annotations like "Solo" and "Pos." with arrows pointing to specific notes. The score is divided into two measures by a vertical bar line.

Handwritten musical score for a piano piece, marked with a circled '2' and the word 'Solo'. The score is written on five staves. The first staff contains a melodic line with a key signature of one sharp (F#) and a dynamic marking of *p*. The second staff has a treble clef and a key signature of two sharps (F# and C#). The third staff has a bass clef and a key signature of one sharp (F#). The fourth and fifth staves are empty. The score is divided into two measures by a vertical line. The second measure is marked 'Solo' and contains a melodic line with a key signature of one sharp (F#) and a dynamic marking of *pp*. The first measure of the first staff has a circled '1' above it.

Handwritten musical score for a piano piece, marked with a circled '3' and the word 'Solo'. The score is written on five staves. The first staff contains a melodic line with a key signature of one sharp (F#) and a dynamic marking of *p*. The second staff has a treble clef and a key signature of one sharp (F#). The third staff has a bass clef and a key signature of one sharp (F#). The fourth and fifth staves are empty. The score is divided into three measures by vertical lines. The second measure is marked 'Solo' and contains a melodic line with a key signature of one sharp (F#) and a dynamic marking of *f*. The first measure of the first staff has a circled '1' above it.

Handwritten musical score for three staves (violin I, violin II, and viola). The notation includes various notes, accidentals (sharps, flats, naturals), and phrasing marks such as slurs and accents. The first staff is marked with a '27' and an accent (^). The second and third staves also feature similar notation and phrasing.

Handwritten musical score for four staves (violin I, violin II, viola, and cello/contrabass). The notation includes notes, accidentals, and dynamic markings such as 'pp' (pianissimo). The first three staves have phrasing marks and accents. The fourth staff is labeled 'Vcl. (oder Flöte)' and contains more complex rhythmic notation.

Handwritten musical score for the first system. It consists of five staves. The top four staves are grouped by a brace on the left, representing a piano accompaniment. The fifth staff is a solo line. The music is written in a key with one flat (B-flat) and a common time signature. The first measure shows a piano introduction with a half note chord and a quarter note. The second measure continues with a half note chord and a quarter note. The solo line begins with a series of eighth notes, followed by a quarter note and a half note.

Handwritten musical score for the second system. It consists of five staves. The top four staves are grouped by a brace on the left, representing a piano accompaniment. The fifth staff is a solo line. The music is written in a key with one flat (B-flat) and a common time signature. The first measure shows a piano introduction with a half note chord and a quarter note. The second measure continues with a half note chord and a quarter note. The solo line begins with a series of eighth notes, followed by a quarter note and a half note.

Handwritten musical score for strings and piano. The top system shows four staves for strings (Violin I, Violin II, Viola, Cello/Double Bass) and a piano part. The strings play sustained chords with accents. The piano part features a complex rhythmic pattern with triplets and sixteenth notes.

Handwritten musical score for horns and piano. The top system shows four staves for horns (Horn I, Horn II, Horn III, Horn IV) and a piano part. The horns play sustained chords with accents. The piano part continues with complex rhythmic patterns.

Handwritten musical score for the first system. It consists of three staves for piano accompaniment and one staff for the right hand. The piano part includes dynamics like *mp* and *f*, and articulation marks like accents (^) and slurs. The right hand part features a melodic line with slurs and accents.

5

Handwritten musical score for the second system. It consists of three staves for piano accompaniment and one staff for the right hand. The piano part includes dynamics like *mp* and *f*. The right hand part features a melodic line with slurs and accents, ending with a *Ritard* marking and a circled 5.

Handwritten musical score for page 6. The score consists of five staves. The top two staves are for a string quartet. The third staff is for the piano, starting with a circled 'p' and the word 'solo'. It contains a melodic line with triplets and slurs, with the word 'dim.' written below it. The bottom two staves are for the bass line, with a circled 'p' at the beginning.

pp sempre cresc.

Handwritten musical score for page 7. The score consists of five staves. The top two staves are for a string quartet. The third staff is for the piano, starting with a circled 'pp'. It contains a series of chords with slurs, followed by a section with a circled 'f' and another with a circled 'ff'. The bottom two staves are for the bass line, with a circled 'pp' at the beginning.

Handwritten musical score for the first system. It consists of a grand staff with treble and bass clefs. The music includes various notes, accidentals (sharps and flats), and dynamic markings like 'f' and 'ff'. A circled '2' is written above the first measure. The piece concludes with a double bar line.

Handwritten musical score for the second system. It continues the grand staff notation with complex rhythmic patterns, accidentals, and dynamic markings. The system ends with a double bar line and a sharp sign below the staff.

②

Handwritten musical score for a string quartet, measures 1-3. The score is written on four staves. The first measure contains a complex melodic line with many accidentals and a sharp sign. The second and third measures contain rhythmic patterns represented by brackets and vertical lines. A circled '2' is in the top right corner.

③

Handwritten musical score for a string quartet, measures 4-6. The score is written on four staves. Measures 4 and 5 show rhythmic patterns with vertical lines. Measure 6 contains the letters 'C', 'b', and 'N' stacked vertically, with 'Sorb.' written to the right. A circled '3' is in the top right corner.

1^o Solo 1 Offen

1^o Tr

Tr 2

H

Pos

Tuba

#

CON SORD. *rit.* (außer 1^o Tr.)

Solo

Solo

(2. +) Dir. ad ♩

1tr
H
Pos.
Tuba

alle con ♩
SOR.D

dir

codi

C
b
n
s

pp
pp
pp

(pp)

compere die

pp
pp
pp

Handwritten musical score on a page with ten staves. The first four staves contain handwritten notes and markings. The first staff has a rest. The second staff has a rest and the text "(poco rit)". The third staff has a rest. The fourth staff has a series of eighth notes. The fifth staff has notes with accents and the word "lunga" above. The sixth staff has notes with accents. The seventh staff has notes with accents. The eighth staff has notes with accents. The ninth staff has notes with accents. The tenth staff has notes with accents. A vertical line separates the first four staves from the last six. A wavy line is drawn vertically on the right side of the page, starting from a circled "Fine" at the top right.

Prestò

3. Satz

A system of five empty musical staves, including a grand staff (treble and bass clefs) and three additional staves below it.

Handwritten musical notation for the second system, consisting of five staves. The notation includes notes, rests, and dynamic markings. The first staff has a circled '2' above it. The second and third staves have circled '22' above them. The notation includes notes with accidentals (sharps and naturals) and rests. There are also some handwritten annotations like 'b9' and '9' above notes. A bracket with the number '3' is visible under a group of notes in the second and third staves.

Handwritten musical score for the first system, measures 1-2. The score is written on three staves (treble, alto, and bass clefs). The first measure contains eighth and quarter notes with various accidentals (flats and naturals). The second measure contains a half note and a quarter note with a fermata. A circled number '1' is written above the second measure.

Handwritten musical score for the second system, measures 3-4. The score is written on three staves (treble, alto, and bass clefs). The first measure contains eighth and quarter notes with various accidentals. The second measure contains a half note and a quarter note. The third and fourth measures contain half notes with accents. A circled number '2' is written above the fourth measure.

Handwritten musical score for the first system, measures 1-4. The notation includes a grand staff with treble, alto, and bass clefs. The music features various notes, accidentals (sharps, flats, naturals), and articulation marks like accents and slurs. Measure 4 contains a circled number '22' and a sharp sign next to an '8'.

Handwritten musical score for the second system, measures 5-8. The notation includes a grand staff with treble, alto, and bass clefs. The music features various notes, accidentals, and articulation marks. Measure 8 contains a circled number '3'.

Handwritten musical score for the first system. It consists of three staves. The top staff is marked *Hpp* and contains a single note b_8 with an accent (^) above it. The middle staff is marked *Hp* and contains a sequence of notes: b_0 , b_7 , $\sharp b_7$, b_7 , b_7 , $\sharp b_7$, b_7 , $\sharp b_7$, b_7 , $\sharp b_7$, b_7 , $\sharp b_7$, b_7 , $\sharp b_7$. The bottom staff is marked *Hp* and contains a single note b_0 . A circled *Solo* marking is present on the middle staff. The system is divided into three measures by vertical bar lines.

Handwritten musical score for the second system. It consists of three staves. The top staff is marked *Hpp* and contains a single note b_0 . The middle staff is marked *Hp* and contains a sequence of notes: b_7 , $\sharp b_7$, b_7 , $\sharp b_7$, b_7 , $\sharp b_7$, b_7 , $\sharp b_7$, b_7 , $\sharp b_7$, b_7 , $\sharp b_7$, b_7 , $\sharp b_7$. The bottom staff is marked *Hpp* and contains a single note b_0 . The system is divided into three measures by vertical bar lines.

Handwritten musical score for the first system. It consists of three staves. The top staff is in G major (one sharp) and contains a whole note chord $\text{Hp} = \text{G}^{\flat} \text{B}^{\flat}$. The middle staff is in G major and contains a whole note chord $\text{Hp} = \text{G}^{\flat} \text{B}^{\flat}$ with a double flat sign over the G. Below the chord are rhythmic markings: $\text{t} \text{t} \text{t} \text{t} \text{t}$ in the first measure, $\text{t}^{\flat} \text{t}^{\flat} \text{t}^{\flat} \text{t}^{\flat} \text{t}^{\flat}$ in the second, and $\text{t}^{\flat} \text{t}^{\flat} \text{t}^{\flat} \text{t}^{\flat} \text{t}^{\flat}$ in the third. The bottom staff is in G major and contains a whole note chord $\text{Hp} = \text{G}^{\flat} \text{B}^{\flat}$. The system is divided into three measures by vertical bar lines.

Four empty musical staves, likely for a second system or a different instrument part.

Handwritten musical score for the second system. It consists of three staves. The top staff is in G major and contains a whole note chord $\text{Hp} = \text{G}^{\flat} \text{B}^{\flat}$ with an accent (^) over the G. The middle staff is in G major and contains a whole note chord $\text{Hp} = \text{G}^{\flat} \text{B}^{\flat}$ with an accent (^) over the G. Below the chord are rhythmic markings: $\text{t}^{\flat} \text{t}^{\flat} \text{t}^{\flat} \text{t}^{\flat} \text{t}^{\flat}$ in the first measure, $\text{t}^{\flat} \text{t}^{\flat} \text{t}^{\flat} \text{t}^{\flat} \text{t}^{\flat}$ in the second, and $\text{t}^{\flat} \text{t}^{\flat} \text{t}^{\flat} \text{t}^{\flat} \text{t}^{\flat}$ in the third. The bottom staff is in G major and contains a whole note chord $\text{Hp} = \text{G}^{\flat} \text{B}^{\flat}$ with an accent (^) over the G. The system is divided into three measures by vertical bar lines.

Four empty musical staves, likely for a second system or a different instrument part.

Handwritten musical score for the first system. It consists of three staves. The top staff is in treble clef with a key signature of one sharp (F#) and a time signature of 6/8. The middle staff is in treble clef with a key signature of one flat (Bb) and a time signature of 6/8. The bottom staff is in bass clef with a key signature of one flat (Bb) and a time signature of 6/8. The music is written in blue ink. The first staff has a dynamic marking of $mp = 6/8$. The second staff has a dynamic marking of $mp = \bar{6}$. The third staff has a dynamic marking of $mp = 0$. The notes are connected by a long slur across all three staves. There are also some handwritten notes and symbols below the staves, including a circled '6' and some rhythmic markings.

Handwritten musical score for the second system. It consists of three staves. The top staff is in treble clef with a key signature of one sharp (F#) and a time signature of 6/8. The middle staff is in treble clef with a key signature of one flat (Bb) and a time signature of 6/8. The bottom staff is in bass clef with a key signature of one flat (Bb) and a time signature of 6/8. The music is written in blue ink. The first staff has a dynamic marking of $mp = \# 6$. The second staff has a dynamic marking of $mp = 6/0$. The third staff has a dynamic marking of $mp = 0$. The notes are connected by a long slur across all three staves. There are also some handwritten notes and symbols below the staves, including a circled '6' and some rhythmic markings.

④

Solo

1. **f**

2. **hp**

H

Pos

Tuba **hp**

Handwritten musical score for the first system. The top staff is in treble clef and contains three measures of eighth notes: $\dot{1}$ $\underline{9\ 9}$, $\underline{9\ 9\ 9}$, and $\underline{9\ 9\ 9}$. Above the notes are slurs and a fermata over the final note. The grand staff below consists of three staves: the top staff is in treble clef with dynamics $\#p = \dot{1}$ and \wedge ; the middle staff is in treble clef with dynamics $\#p = \flat\dot{0}$ and \wedge ; the bottom staff is in bass clef with dynamics $\#p = \dot{0}$ and \wedge . The bottom two staves of the grand staff are empty.

Handwritten musical score for the second system. The top staff is in treble clef and contains three measures of eighth notes: $\dot{1}$ $\underline{9\ 9\ 9}$ $\underline{9\ 9\ 9}$, $\dot{1}$ $\underline{9\ 9}$ $\underline{9\ 9}$, and $\underline{9\ 9\ 9}$ $\underline{9\ 9}$. Above the notes are slurs and a fermata over the final note. The grand staff below consists of three staves: the top staff is in treble clef with dynamics $\#p = \flat\dot{0}$ and \wedge ; the middle staff is in treble clef with dynamics $\#p = \flat$ and \wedge ; the bottom staff is in bass clef with dynamics $\#p = \flat\dot{0}$ and \wedge . The bottom two staves of the grand staff are empty.

Handwritten musical score for the first system, measures 1-3. The score includes a treble clef staff with eighth notes and a grand staff with three staves (violin I, violin II, and cello) showing sustained notes with dynamics like 'hp' and accents.

5

Handwritten musical score for the second system, measures 4-6. The score includes a treble clef staff with eighth notes and a grand staff with three staves (violin I, violin II, and cello) showing sustained notes with dynamics like 'hp', 'f', and 'ff'.

6

Handwritten musical score for a woodwind quintet. The staves are labeled: ZTR (Flute), H (Clarinet), Pos (Oboe), T. (Bassoon), and Stry (String). The string part includes the instruction "Solo" and "dim" with a circled 'p' dynamic marking.

sempre crescendo <

7

Handwritten musical score for a woodwind quintet, measures 6-10. The string part is marked *pp* and features a circled '51' above the first measure. The woodwind parts are mostly rests.

Cresc.

8

Handwritten musical score for the first system. The top staff is in treble clef and contains a sequence of notes: a quarter note G^b, a quarter note D, a quarter note G^b, a quarter note D, a quarter note G^b, a quarter note D, a quarter note G^b, a quarter note D, a quarter note G^b, a quarter note D, and a quarter note G^b. A large blue arrow points from the 'Cresc.' marking to the right. A circled 'p' is written below the first measure. The bottom four staves are empty.

9

Handwritten musical score for the second system. The top two staves are in treble clef. The first staff contains notes: a quarter note G^b, a quarter note D, a quarter note G^b, a quarter note D, a quarter note G^b, a quarter note D, a quarter note G^b, a quarter note D, a quarter note G^b, a quarter note D, and a quarter note G^b. The second staff contains notes: a quarter note G^b, a quarter note D, a quarter note G^b, a quarter note D, a quarter note G^b, a quarter note D, a quarter note G^b, a quarter note D, a quarter note G^b, a quarter note D, and a quarter note G^b. A circled 'p' is written below the first measure of the top staff. The bottom four staves are empty.

Handwritten musical score for system 10. It consists of three staves. The top staff has a treble clef and a circled 'F' above it. The middle staff has a treble clef and a circled 'F' above it. The bottom staff has a bass clef and a circled 'F' above it. The music is written in a common time signature. The notes are mostly quarter and eighth notes, with some rests. There are dynamic markings like 'f' and 'p' and accents (^) over some notes. A large brace spans across all three staves.

Handwritten musical score for system 11. It consists of three staves. The top staff has a treble clef and a circled 'F' above it. The middle staff has a treble clef and a circled 'F' above it. The bottom staff has a bass clef and a circled 'F' above it. The music is written in a common time signature. The notes are mostly quarter and eighth notes, with some rests. There are dynamic markings like 'f' and 'p' and accents (^) over some notes. A large brace spans across all three staves. At the bottom of the system, there is a large bracket labeled 'Block (F)'.

12

Solo ♭ ♯ ♯ ♭ ♯ ♯ ♯ ♭ ♯ ♯ ♭ ♯ ♯ ♭ ♯ ♯ ♭ ♯ ♭ ♯ ♯ ♭ ♯ ♯

13 Solo

Block A

15

14

Handwritten musical score for measures 14-15. The score is written on a grand staff with five staves. The first staff is marked with a treble clef and a key signature of one sharp (F#). The second staff is marked with a bass clef and a key signature of one sharp (F#). The word "Flode H" is written in the first staff. The tempo marking "Polo" is written above the second staff. The notation includes various rhythmic figures and accidentals.

17

16

Handwritten musical score for measures 16-17. The score is written on a grand staff with five staves. The first staff is marked with a treble clef and a key signature of one sharp (F#). The second staff is marked with a bass clef and a key signature of one sharp (F#). The word "Flode H" is written in the first staff. The notation includes various rhythmic figures and accidentals.

17

18

Handwritten musical score for page 18. The score consists of five staves. The top four staves are mostly empty with some horizontal lines. The fifth staff contains a 'Solo' section with rhythmic notation and notes. There are circled numbers 17, 18, and 19 at various points in the score.

19

Handwritten musical score for page 19. The score consists of five staves. The top four staves are mostly empty with some horizontal lines. The fifth staff contains a 'Solo' section with rhythmic notation and notes. There are circled numbers 19 and 20 at various points in the score.

22

Solo b ## b 11 11 11 b ## b 11 ## ## ##

29

Solo b44 b7 f f f b7 f f 99 #99 b1 9 #9

30

Block B

Block B

N *p*

S *p*

R *p* *aus Pos. (Tuba tacet)*

p

p

31

Handwritten musical score for three staves, measures 1-4. The notation includes notes, rests, and bar lines. The first staff has a treble clef and a key signature of one flat. The second and third staves have bass clefs. The first measure contains a melodic line in the first staff and accompaniment in the second and third. The second, third, and fourth measures show a continuation of the accompaniment with various rests and note values.