

Notenheft

Satz ①

Mod. assai (And. Allegro)

2TR. in C (natürlich) sonst in B

1H. mit (in C natürlich) sonst mit

4 Pos. Trombe

Bass

Schlagw. $\frac{4}{4}$! ! ! !

9

Handwritten musical score for the first system. The top staff is in treble clef and contains a melodic line with notes, rests, and dynamic markings such as mf and f . The bottom staff is in bass clef and contains accompaniment notes. A large bracket on the left side groups both staves.

Handwritten musical score for the second system. It consists of three staves. The top staff is in treble clef, the middle in alto clef, and the bottom in bass clef. The notation is dense with notes, rests, and dynamic markings including ff , mp , and f . Large curved lines connect notes across the staves, indicating phrasing or articulation.

2

Handwritten musical score for three staves. The top staff has a treble clef and a key signature of one sharp (F#). The middle and bottom staves have bass clefs. The music consists of several measures with notes, rests, and dynamic markings like "Hp =". There are also some handwritten annotations like "92" and "1".

3

4

Handwritten musical score for three staves. The top two staves are mostly empty with some horizontal lines. The bottom staff has a bass clef and contains a sequence of notes with accidentals. There are handwritten annotations including "Solo", "letzten Stroche nachwärts", and a circled "FF".

5

1

2

H

Pos

Tuba

Blade (A)

Solo Tromp.

Blade (A)

6

7

Solo

na na na. inna nnn

8

62

Handwritten musical score for measures 62-64. The score is written on a grand staff with three systems of staves. The first system contains measures 62, 63, and 64. The notation includes various chords and melodic lines with slurs and accents. The key signature has one sharp (F#).

63

Handwritten musical score for measures 65-67. The score is written on a grand staff with three systems of staves. The first system contains measures 65, 66, and 67. The notation includes various chords and melodic lines with slurs and accents. The key signature has one sharp (F#).

2

20

Solo

3 3 3 3

dim

(p)

Tempo cresc.

(p)

(p)

(p)

Handwritten musical score for the first system, consisting of five staves. The top two staves are treble clefs, the middle two are bass clefs, and the bottom staff is a drum set notation. The music includes various notes, rests, and dynamic markings such as $f=$ and $mf=$. There are also some handwritten annotations like $b\flat$ and $\hat{}$.

Handwritten musical score for the second system, consisting of five staves. The top two staves are treble clefs, the middle two are bass clefs, and the bottom staff is a drum set notation. A section is labeled "Pizzicato (B)" with a circled "B" and a circled "11". There are also circled numbers 12, 13, and 14. The music includes various notes, rests, and dynamic markings such as $f=$ and $mf=$. There are also some handwritten annotations like $b\flat$ and $\hat{}$.

Handwritten musical score for the first system. The notation includes a treble clef, a key signature of one sharp (F#), and a 3/4 time signature. The melody consists of eighth and sixteenth notes with various accidentals and slurs. The word "solo" is written above the first measure, and "pos." is written below it. A circled sharp sign is also present below the first measure.

Handwritten musical score for the second system. The notation includes a treble clef, a key signature of one sharp (F#), and a 3/4 time signature. The melody consists of eighth and sixteenth notes with various accidentals and slurs. The word "solo" is written above the first measure.

Handwritten musical score for the first system. The treble clef staff contains a series of vertical stems with various accidentals (sharps, naturals, flats) and a slur. The bass clef staff is empty. A vertical bar line is present.

Handwritten musical score for the second system. A circled number "12" is written above the treble clef staff. The treble clef staff contains a series of vertical stems with various accidentals and a slur. The bass clef staff contains a series of notes with accidentals and a slur. A vertical bar line is present.

Handwritten musical score for measures 12 and 13. The score is written on a grand staff with five systems of staves. Measure 12 (circled 12) contains a piano part with a triplet of eighth notes followed by a sixteenth-note pattern. Measure 13 (circled 13) is mostly empty, with some rests in the upper staves. A circled 13 is also present at the top right of the page.

Handwritten musical score for measures 14 and 15. Both measures are marked with large parentheses and the word "Block" followed by a circled B. Measure 14 (circled 14) and measure 15 (circled 15) are otherwise empty. A circled 15 is also present at the top right of the page.



16

Handwritten musical score for measures 16-17. The score consists of five staves. The top four staves are mostly empty with some horizontal lines. The bottom staff contains rhythmic notation with eighth notes and rests, and a circled 'p' dynamic marking.

dir (2. x ev. rit + (dir))

17

Handwritten musical score for measures 18-20. The score consists of five staves. The top three staves contain melodic lines with slurs and dynamic markings. The bottom two staves are mostly empty with some horizontal lines.

(mulling) $\frac{4}{4}$

18

frei (Pos.)

breit

19

20

Solo/frei

breit

21

22 breit

23 frei

23

breit

24

Schlagw. Solo (frei (accel. cresc))

pp

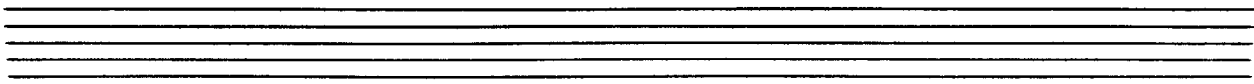
accel.

25

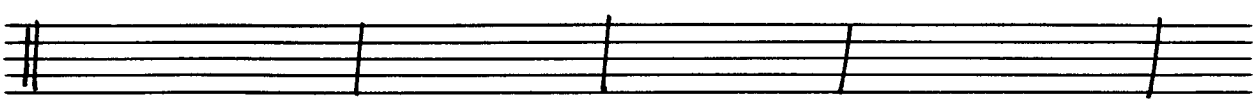
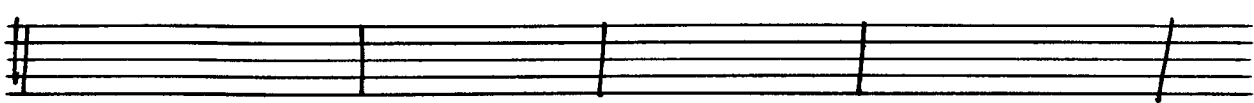
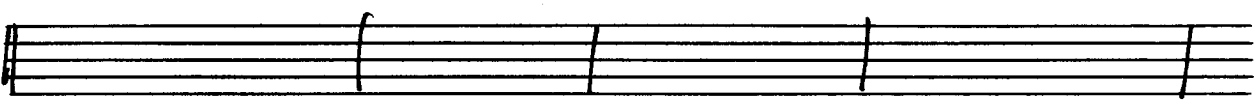
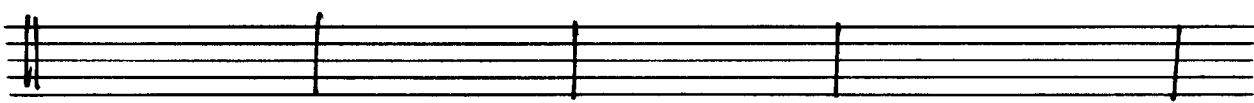
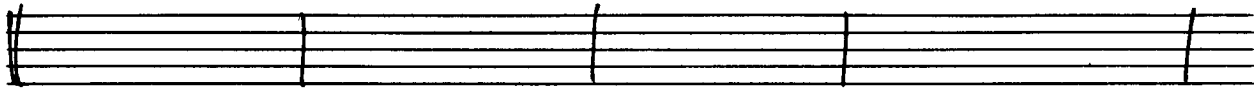
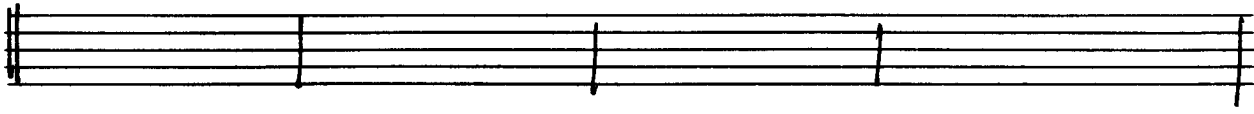
(Presto)

26

(freies Solo) ad. lib.



*Allmähliche Schwächer werden und überlassen
zu D.C. al ϕ*



*D.C.
al
Fine
 ϕ*

CODA

Handwritten musical score for the first system. It consists of five staves. The top staff is for the piano, with three staves below it. The bottom two staves are for the harp. The piano part includes notes, rests, and dynamics such as *p* and *pp*. There are circled numbers '12' and '17' in the top left and right corners respectively. The word 'CODA' is written at the beginning of the first staff.

Handwritten musical score for the second system. It consists of five staves, continuing the piano and harp parts from the first system. The piano part includes notes, rests, and dynamics such as *p* and *pp*. There is a circled number '17' in the top right corner.

Adagio da...

Handwritten musical score for strings, consisting of five staves. The notation includes various notes, rests, and dynamic markings. The first staff has a treble clef, and the second has an alto clef. The third staff has a bass clef. The fourth and fifth staves are empty. The score is divided into two measures. The first measure contains notes with dynamic markings $ff >$ and $ff >$. The second measure contains notes with dynamic markings $ff >$ and $ff >$. There are also some handwritten annotations like 2^2 and $^{\wedge}$ above notes.

Adagio da...

(B)

Handwritten musical score for strings, consisting of five staves. The notation includes various notes, rests, and dynamic markings. The first staff has a treble clef, and the second has an alto clef. The third staff has a bass clef. The fourth and fifth staves are empty. The score is divided into two measures. The first measure contains notes with dynamic markings $p >$ and $p =$. The second measure contains notes with dynamic markings $p >$ and $p >$. There are also some handwritten annotations like $p >$ and $p >$ above notes.

C

Handwritten musical score for the first system, consisting of five staves. The top staff is in treble clef with a key signature of one flat and contains notes with accents and slurs. The second and third staves are in alto and tenor clefs, respectively, with notes and slurs. The fourth staff is in bass clef, starting with a 'Solo' marking and containing notes with accents. The fifth staff is a drum line with vertical strokes. Dynamic markings include 'ppp' on the first staff and 'pp' on the fourth staff.

Finis

Handwritten musical score for the second system, consisting of five staves. The top staff is in treble clef with notes and slurs. The second and third staves are in alto and tenor clefs, respectively, with notes and slurs. The fourth staff is in bass clef with notes and slurs. The fifth staff is a drum line with vertical strokes. Dynamic markings include 'ppp' on the second, third, and fourth staves. The word 'Lunga' is written above the second staff, and 'Finis' is circled in the top right corner.

Satz ②

(A) sehr ruhig

Handwritten musical score for the first system. It consists of five staves. The top two staves are for woodwinds (flute and clarinet), and the bottom three are for strings. The music is in 7/8 time. The first measure is a whole rest. The second measure contains a piano solo section with complex rhythmic patterns and dynamic markings like *sfz* and *pp*. The third measure continues the solo with a circled *f* marking. The fourth measure has a circled *f* and a circled *pp*. The fifth measure is a whole rest.

Handwritten musical score for the second system. It consists of five staves. The top two staves are for woodwinds, and the bottom three are for strings. The music is in 7/8 time. The first measure contains a piano solo section with complex rhythmic patterns and dynamic markings like *pp* and *f*. The second measure continues the solo with a circled *f* marking. The third measure has a circled *f* and a circled *pp*. The fourth measure is a whole rest. The fifth measure is a whole rest.

(2)

Handwritten musical score for system 2, measures 1-2. The score is for a woodwind instrument, likely a clarinet or saxophone, in G major. Measure 1 contains a complex rhythmic pattern with sixteenth and thirty-second notes, marked with an accent (>) and a dynamic of p. Measure 2 features a melodic line with slurs and accents, marked with a circled 'p' and a 'Solo' instruction. The bass line is mostly rests with some rhythmic notation.

(3)

Handwritten musical score for system 3, measures 1-3. The score continues from the previous system. Measure 1 has a rhythmic pattern with a dynamic of p. Measure 2 is marked 'Solo' and contains a melodic line with slurs and accents, marked with a circled 'p' and a dynamic of f. Measure 3 continues the melodic line with slurs and accents, marked with a circled 'p' and a dynamic of f. The bass line has rhythmic patterns in all three measures.

Handwritten musical score for three staves. The top staff is in treble clef with a key signature of one sharp (F#). The middle and bottom staves are in bass clef. The music consists of several measures with notes, rests, and dynamic markings like 'pp'. There are also some handwritten annotations like '27' and '28' near the notes.

Two empty musical staves, one in treble clef and one in bass clef, positioned above the second system of music.

Handwritten musical score for four staves. The top three staves are in treble clef, and the bottom staff is in bass clef. The music includes notes, rests, and dynamic markings like 'pp'. A section is labeled 'Vibr. (oder Flöte)' in the bottom staff. There are also some handwritten annotations like '27' and '28' near the notes.

Handwritten musical score for the first system. It consists of five staves. The top four staves are grouped by a brace on the left, representing the piano accompaniment. The fifth staff is a woodwind part. The music is written in two measures. The piano part features chords and melodic lines with accents (^) and slurs. The woodwind part has a melodic line with slurs and accents.

Handwritten musical score for the second system. It consists of five staves. The top four staves are grouped by a brace on the left, representing the piano accompaniment. The fifth staff is a woodwind part. The music is written in two measures. The piano part features chords and melodic lines with accents (^) and slurs. The woodwind part has a melodic line with slurs and accents.

Handwritten musical score for the first system. It consists of five staves. The top four staves are grouped by a brace on the left and represent a piano accompaniment. The top staff is in treble clef, the second in bass clef, and the third and fourth are in bass clef. The bottom staff is a solo line in treble clef. The music is divided into two measures by a vertical bar line. The first measure has a key signature of one sharp (F#) and a common time signature. The second measure has a key signature of one flat (Bb) and a common time signature. The piano accompaniment features chords and melodic lines with accents (^) and slurs. The solo line features a complex rhythmic pattern with many sixteenth notes and slurs.

Handwritten musical score for the second system. It consists of five staves. The top four staves are grouped by a brace on the left and represent a piano accompaniment. The top staff is in treble clef, the second in bass clef, and the third and fourth are in bass clef. The bottom staff is a solo line in treble clef. The music is divided into two measures by a vertical bar line. The first measure has a key signature of one flat (Bb) and a common time signature. The second measure has a key signature of one sharp (F#) and a common time signature. The piano accompaniment features chords and melodic lines with accents (^) and slurs. The solo line features a complex rhythmic pattern with many sixteenth notes and slurs.

Handwritten musical score for the first system, measures 47-54. The score is written on four staves. The top three staves are for piano accompaniment, with clefs for treble, alto, and bass, and 'Hp' markings. The bottom staff is for the right hand, showing a complex rhythmic pattern with many beamed notes. A circled '5' is written below the piano part.

Handwritten musical score for the second system, measures 55-62. The score is written on four staves. The top three staves are for piano accompaniment, with clefs for treble, alto, and bass, and 'Hp' markings. The bottom staff is for the right hand, showing a complex rhythmic pattern with many beamed notes. A circled '5' is written below the piano part.

6

Solo

pp

dim

pp sempre cresc.

pp

f

ff

Handwritten musical score for the first system. It consists of three staves: a treble clef staff at the top, an alto clef staff in the middle, and a bass clef staff at the bottom. The treble staff begins with a circled number '2' and contains notes with accidentals (sharps and flats) and slurs. The alto staff contains notes with slurs and a circled '2'. The bass staff contains notes with slurs and a circled '2'. There are also some handwritten annotations like 'F #', 'E #', and 'N #' on the left side of the treble and alto staves.

Handwritten musical score for the second system. It consists of three staves: a treble clef staff at the top, an alto clef staff in the middle, and a bass clef staff at the bottom. The treble staff contains notes with slurs and a circled '2'. The alto staff contains notes with slurs and a circled '2'. The bass staff contains notes with slurs and a circled '2'. There are also some handwritten annotations like 'F #', 'E #', and 'N #' on the left side of the treble and alto staves.

7

8

Solo 1 *Offen*

1Tr

Tr 2

H

Pos

Tuba

CON FORD. alle (außer 1Tr.)

Solo

Handwritten musical score for measures 8 and 9. The top staff is a solo line with a wavy line above it. The bottom staves are for a woodwind section, with some notes and rests visible.

Solo

Handwritten musical score for measures 10 and 11. The top staff is a solo line with a wavy line above it. The bottom staves are for a woodwind section, with notes and rests visible.

(2. x) D.C. al ff

142

M

Pos.

Tuba

alle con ff

SOR.D

dim

dim p

Handwritten musical score for a woodwind ensemble. The score is written on five staves. The first staff is labeled "C" (Clarinete), the second "b" (Bassoon), the third "S" (Saxofon), and the fourth "Rp." (Kornett). The fifth staff is for the percussion. The music is in 4/4 time, indicated by a "C" time signature. The score consists of two measures. The first measure is mostly rests. The second measure contains melodic lines for the woodwinds and a rhythmic pattern for the percussion. Dynamics include *ff* *pp*, *pp*, and *pp*. There are various articulation marks such as accents, slurs, and breath marks.

comporre di

Handwritten musical score for a piano. The score is written on four staves. The music is in 4/4 time. It consists of two measures. The first measure shows a complex chordal structure with many notes and slurs. The second measure shows a similar structure but with fewer notes. Dynamics include *pp*, *pp*, and *ppp*. There are various articulation marks such as accents and slurs.

lunga

(poco rit)

Fine

3. Satz

Prestr

A set of five empty musical staves, likely for a string quintet or similar ensemble. The staves are arranged vertically and are currently blank.

Handwritten musical score for five parts. The notation includes notes, rests, and dynamic markings. The first two parts have circled '2' above them. The third part has a circled '2' above it. The fourth part has a circled '2' above it. The fifth part has a circled '2' above it. There are also circled '3' markings under some notes. The score is written in a cursive, handwritten style.

①

Handwritten musical score for the first system, measures 1-3. The score is written on three staves (treble, alto, and bass clefs). The music includes various notes, rests, and articulation marks like slurs and accents. A circled '1' is at the top right.

②

Handwritten musical score for the second system, measures 4-6. The score is written on three staves (treble, alto, and bass clefs). The music includes various notes, rests, and articulation marks like slurs and accents. A circled '2' is at the top right.

Handwritten musical score for the first system, measures 91-94. The score is written on four staves. The first two staves are in treble clef, and the last two are in bass clef. Measure 91 is circled. A large slur covers measures 92-94. A circled '3' indicates a triplet in measure 94.

Handwritten musical score for the second system, measures 95-98. The score is written on four staves. The first two staves are in treble clef, and the last two are in bass clef. Measure 98 is circled. A large slur covers measures 95-98.

Handwritten musical score for the first system. It consists of five staves. The top two staves are for the right hand, and the bottom three are for the left hand. The music is in a 3/4 time signature. The first staff has a dynamic marking of *mp* and a slur over a half note with a flat. The second staff has a dynamic marking of *p* and a slur over a half note with a flat. The third staff has a dynamic marking of *p* and a slur over a half note with a flat. The fourth and fifth staves are empty.

Handwritten musical score for the second system. It consists of five staves. The top two staves are for the right hand, and the bottom three are for the left hand. The music is in a 3/4 time signature. The first staff has a dynamic marking of *mp* and a slur over a half note with a flat. The second staff has a dynamic marking of *p* and a slur over a half note with a flat. The third staff has a dynamic marking of *p* and a slur over a half note with a flat. The fourth and fifth staves are empty.

Handwritten musical score for the first system. It consists of five staves. The top staff is in treble clef with a piano (*p*) dynamic marking and a half note. The second staff is in treble clef with a mezzo-forte (*mf*) dynamic marking and a half note. The third staff is in bass clef with a mezzo-forte (*mf*) dynamic marking and contains rhythmic notation: a half note followed by a quarter note, then a quarter note with a slur over it, and finally a quarter note with a slur over it. The fourth and fifth staves are empty.

Handwritten musical score for the second system. It consists of five staves. The top staff is in treble clef with a piano (*p*) dynamic marking and a half note. The second staff is in treble clef with a mezzo-forte (*mf*) dynamic marking and a half note. The third staff is in bass clef with a mezzo-forte (*mf*) dynamic marking and contains rhythmic notation: a half note followed by a quarter note, then a quarter note with a slur over it, and finally a quarter note with a slur over it. The fourth and fifth staves are empty.

Handwritten musical score for the first system. It consists of five staves. The top staff is a treble clef with a key signature of one sharp (F#) and a tempo marking of 68. The second staff is a bass clef with a key signature of one sharp (F#) and a dynamic marking of pp . The third staff is a bass clef with a dynamic marking of pp and a circled zero below it. The fourth and fifth staves are empty. The music is written in a single system with a long slur over the first two staves. The piano part has several notes with fingerings (1, 2, 3, 4, 5) and a circled zero below the first note. The harp part has a circled zero below it.

Two empty musical staves, one treble clef and one bass clef, positioned above the second system of music.

Handwritten musical score for the second system. It consists of five staves. The top staff is a treble clef with a key signature of one sharp (F#) and a tempo marking of 68. The second staff is a bass clef with a key signature of one sharp (F#) and a dynamic marking of pp . The third staff is a bass clef with a dynamic marking of pp and a circled zero below it. The fourth and fifth staves are empty. The music is written in a single system with a long slur over the first two staves. The piano part has several notes with fingerings (1, 2, 3, 4, 5) and a circled zero below the first note. The harp part has a circled zero below it.

4

1. *f*

2. *hp*

H *hp*

Pos *hp*

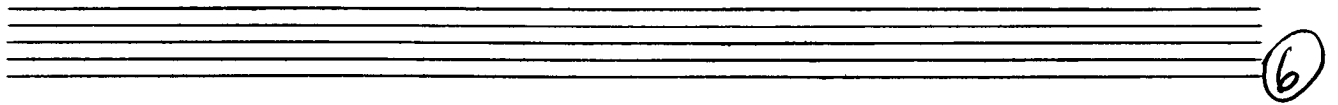
Tuba *hp*

Handwritten musical score for the first system. The top staff is for the flute, showing a melodic line with eighth notes and slurs. The piano accompaniment consists of three staves: the upper right hand (RH) starts with a dynamic marking of $mp =$ and a half note, followed by a long slur; the lower right hand (LH) starts with a dynamic marking of $mp =$ and a half note, followed by a long slur; the left hand (LH) starts with a dynamic marking of $mp =$ and a half note, followed by a long slur. There are also some handwritten notes like b_0 in the LH staff.

Handwritten musical score for the second system. The top staff is for the flute, showing a melodic line with eighth notes and slurs. The piano accompaniment consists of three staves: the upper right hand (RH) starts with a dynamic marking of $mp =$ and a half note with an accent (^), followed by a long slur; the lower right hand (LH) starts with a dynamic marking of $mp =$ and a half note with an accent (^), followed by a long slur; the left hand (LH) starts with a dynamic marking of $mp =$ and a half note with an accent (^), followed by a long slur.

Handwritten musical score for the first system. The top staff is in treble clef and contains three measures of music with notes and rests. The first two measures have a slur over them. The third measure has a double bar line and a fermata. Below it are three grand staff staves (treble, alto, and bass clefs). The first staff starts with a dynamic marking 'fp =', followed by a note with an accent (^) and a fermata. The second and third staves also start with 'fp =', followed by notes with accents and fermatas. The system ends with a circled number '5'.

Handwritten musical score for the second system. The top staff continues the treble clef notation with notes and rests. Below it are three grand staff staves. The first staff starts with 'fp =', followed by a note with an accent and fermata. The second and third staves also start with 'fp =', followed by notes with accents and fermatas. In the second measure, all three staves have a dynamic marking 'f ='. In the third measure, all three staves have a dynamic marking 'ff'. The system ends with a circled number '5'.



2TR
H
Pos
T.
Fgts.
Schy

solò ~ ~ ~ ~

dim - - - - p

sempre crescendo (7)

pp

51

Cresc.

7

8

40

Handwritten musical score for measures 40-43. The score is written on three staves. The top staff begins with a circled 'f' and contains notes with slurs and accents. The middle staff also starts with a circled 'f' and has similar notation. The bottom staff starts with a circled 'p' and contains notes with slurs and accents. The measures are connected by a large slur across all staves.

41

Handwritten musical score for measures 44-47. The score is written on three staves. The top staff begins with a circled 'f' and contains notes with slurs and accents. The middle staff also starts with a circled 'f' and has similar notation. The bottom staff starts with a circled 'p' and contains notes with slurs and accents. The measures are connected by a large slur across all staves. At the bottom of the page, the word "Block" is written in a stylized font with a circled 'H' next to it.

12

13 Solo

15

14

17

16

14

18

Handwritten musical score for measures 14-18. The score consists of five staves. The bottom staff is labeled "Solo" and contains rhythmic notation with stems and flags. There are dynamic markings "p" and "f" in circles. The score is enclosed in a large hand-drawn box.

19

Handwritten musical score for measures 19-22. The score consists of five staves. The bottom staff is labeled "Tuba" and contains rhythmic notation with stems and flags. There are dynamic markings "f" and "mf". The score is enclosed in a large hand-drawn box.

20

21

22

23

Handwritten musical score for the first system, measures 1-4. The score is written on five staves. The top staff is a treble clef with a sharp key signature. The second and third staves are a grand staff (treble and bass clefs). The fourth and fifth staves are empty. The music consists of quarter notes and half notes with various accidentals (sharps, flats, naturals) and slurs. There are also some handwritten annotations like 'a2' and 'H'.

Handwritten musical score for the second system, measures 5-8. The score is written on five staves. The top staff is a treble clef with a sharp key signature. The second and third staves are a grand staff (treble and bass clefs). The fourth and fifth staves are empty. The music consists of quarter notes and half notes with various accidentals (sharps, flats, naturals) and slurs.

Handwritten musical score for page 25. The score is written on five staves. The top two staves are empty. The third staff contains a bass clef and a circled sharp sign. The fourth staff contains handwritten notes: "Solo b f# b g4" in the first measure, "g4 g4" in the second, "b f# b g4" in the third, and "f# f# f# f#" in the fourth. The fifth staff is empty.

Handwritten musical score for page 26. The score is written on five staves. The top two staves contain rhythmic notation with accents and slurs. The third staff contains notes with accents and slurs. The fourth and fifth staves are empty.

27

Handwritten musical score for page 27. The score is written on a grand staff with five staves. The top two staves are empty. The third staff contains a bass clef and a series of notes with accidentals: F#4, G#4, A#4, B#4, C#5, D#5, E#5, F#6. The fourth and fifth staves are empty.

28

Handwritten musical score for page 28. The score is written on a grand staff with five staves. The top two staves contain notes with accents and slurs. The third staff contains notes with slurs and accents. The fourth and fifth staves are empty.

29

Solo $b4$ $b4$ f f f f f f f f $\#4$ 4 4 $\#4$

30

Glocke (B)

2 p

2 p nur Pos. (Tuba tacet)

p 2

p 2

31

Handwritten musical score for three staves, measures 1-4. The notation includes notes, rests, and dynamic markings such as accents (^) and hairpins (>). The first staff has a circled '2' above the first measure. The second and third staves contain notes and rests. The fourth staff is empty.

Five sets of empty musical staves, each consisting of five lines.