

4 Improvisationen

über spanische
Volksweisen

Adolf Scherbaum

für Fagott und Harfe

1. Cancion

ruhig

Handwritten musical score for the first system. It features a treble clef staff with a key signature of one sharp (F#) and a common time signature (C). The music begins with a rest, followed by a series of notes: F#4, G4, A4, B4, C5, B4, A4, G4, F#4. A dynamic marking of *p* is present. Below the staff, there is a circled *p* and the instruction "3art + viel Vibrato". The bass clef staff contains a series of notes: B2, C3, D3, E3, F3, G3, A3, B3, C4, B3, A3, G3, F#3. A circled *p* is also present in the bass staff.

Handwritten musical score for the second system. The treble clef staff continues with notes: F#4, G4, A4, B4, C5, B4, A4, G4, F#4. The bass clef staff continues with notes: B2, C3, D3, E3, F3, G3, A3, B3, C4, B3, A3, G3, F#3. The system includes various musical notations such as slurs, accents, and dynamic markings.

Handwritten musical score for the third system. The treble clef staff continues with notes: F#4, G4, A4, B4, C5, B4, A4, G4, F#4. The bass clef staff continues with notes: B2, C3, D3, E3, F3, G3, A3, B3, C4, B3, A3, G3, F#3. The system includes various musical notations such as slurs, accents, and dynamic markings.

(rit)

Handwritten musical score for the first system. The top staff is for the flute, starting with a dynamic marking *f* and a *rit* instruction. The bottom staff is for the piano, also starting with a dynamic marking *f*. The music is in a key with one flat (B-flat major or D minor) and a 3/4 time signature. The system consists of two measures, with a double bar line in the middle. The flute melody is characterized by slurs and accents, while the piano accompaniment features chords and moving lines.

(rit) tempo 1.

Handwritten musical score for the second system. The top staff is for the flute, starting with a dynamic marking *p* and a *rit* instruction. The bottom staff is for the piano, also starting with a dynamic marking *p*. The music is in a key with one flat (B-flat major or D minor) and a 3/4 time signature. The system consists of two measures, with a double bar line in the middle. The flute melody is characterized by slurs and accents, while the piano accompaniment features chords and moving lines.

allmählich Tempo steigern →

Handwritten musical score for the third system. The top staff is for the flute, starting with a dynamic marking *f*. The bottom staff is for the piano, also starting with a dynamic marking *f*. The music is in a key with one flat (B-flat major or D minor) and a 3/4 time signature. The system consists of two measures, with a double bar line in the middle. The flute melody is characterized by slurs and accents, while the piano accompaniment features chords and moving lines.

Handwritten musical score for the first system, featuring a treble clef staff with a key signature of one sharp (F#) and a bass clef staff. The treble staff begins with a quarter note G4, followed by a series of eighth notes: A4, B4, C5, B4, A4, G4. The bass staff starts with a half note G3, followed by quarter notes: A3, B3, C4, D4. The piece is marked with a tempo of quarter note = 90 (♩ = 90). The first measure is marked with a sharp sign (#). The second measure contains a slur over the notes A4, B4, C5, B4, A4, G4. The third measure contains a slur over the notes G4, A4, B4, C5, B4, A4, G4. The fourth measure contains a slur over the notes G4, A4, B4, C5, B4, A4, G4. The piece concludes with a double bar line.

Handwritten musical score for the second system, featuring a treble clef staff with a key signature of one sharp (F#) and a bass clef staff. The treble staff begins with a quarter note G4, followed by a series of eighth notes: A4, B4, C5, B4, A4, G4. The bass staff starts with a half note G3, followed by quarter notes: A3, B3, C4, D4. The piece is marked with a tempo of quarter note = 90 (♩ = 90). The first measure is marked with a sharp sign (#). The second measure contains a slur over the notes A4, B4, C5, B4, A4, G4. The third measure contains a slur over the notes G4, A4, B4, C5, B4, A4, G4. The fourth measure contains a slur over the notes G4, A4, B4, C5, B4, A4, G4. The piece concludes with a double bar line.

Handwritten musical score for the third system, featuring a treble clef staff with a key signature of one sharp (F#) and a bass clef staff. The treble staff begins with a quarter note G4, followed by a series of eighth notes: A4, B4, C5, B4, A4, G4. The bass staff starts with a half note G3, followed by quarter notes: A3, B3, C4, D4. The piece is marked with a tempo of quarter note = 90 (♩ = 90). The first measure is marked with a sharp sign (#). The second measure contains a slur over the notes A4, B4, C5, B4, A4, G4. The third measure contains a slur over the notes G4, A4, B4, C5, B4, A4, G4. The fourth measure contains a slur over the notes G4, A4, B4, C5, B4, A4, G4. The piece concludes with a double bar line.

(aus frei)

(frei)

Anfangstempo (vielleicht eine Spur noch ruhiger)

Handwritten musical score for the first system. It consists of two staves: a treble clef staff on top and a bass clef staff on the bottom. The treble staff contains several chords, some with accidentals (sharps and flats) and dynamic markings like 'p' and 'v'. A large slur covers the first three measures. The bass staff contains a melodic line with eighth notes and quarter notes, starting with a circled '1' and a double bar line. There are also some handwritten notes and symbols like 'y' and 'p' above the treble staff.

Handwritten musical score for the second system. It consists of two staves: a treble clef staff on top and a bass clef staff on the bottom. The treble staff contains several chords, some with accidentals (sharps and flats) and dynamic markings like 'p' and 'v'. A large slur covers the first three measures. The bass staff contains a melodic line with eighth notes and quarter notes, starting with a circled '1' and a double bar line. There are also some handwritten notes and symbols like 'y' and 'p' above the treble staff.

appassionato

(frei - pesante)

(poco rit)

(frei) *Lento*

gr. rit + din...

Lunga >

Lento

gr. rit...

Lunga

2. EL Contrabandista (Rasgueado)

selva rasada

Handwritten musical score for the first system. It features a treble clef with a 3/4 time signature and a piano (p) dynamic marking. The melody consists of eighth notes with accents, including a trill-like figure. The bass line is a simple accompaniment of eighth notes. A fermata is placed over the first two measures of the melody.

Handwritten musical score for the second system. It continues the melody and accompaniment. The treble clef part has a dynamic marking of piano (p) and includes a slur over a group of notes. The bass line continues with eighth notes. A fermata is placed over the final measure of the system.

Handwritten musical score for the third system. The treble clef part features a dynamic marking of fortissimo (ff) and includes a slur over a group of notes. The bass line continues with eighth notes. A fermata is placed over the final measure of the system.

Handwritten musical score for the first system. The top staff is in treble clef with a key signature of one sharp (F#). The bottom staff is in bass clef. The music consists of several measures with notes, rests, and dynamic markings like 'dim' and 'f'. There are also some handwritten annotations and a large bracket spanning across the system.

Handwritten musical score for the second system. The top staff is in treble clef with a key signature of one flat (Bb). The bottom staff is in bass clef. The music continues with notes, rests, and dynamic markings like 'f' and 'ff'. There are also some handwritten annotations and a large bracket spanning across the system.

Handwritten musical score for the third system. The staff is in bass clef. The music consists of several measures with notes, rests, and dynamic markings like 'dim' and 'f'. There is a circled 'p' marking in the final measure. A large bracket is present at the top right of the system.

etwas ruhiger

Handwritten musical score for the first system. It features a treble clef staff with a melodic line starting with a rest, followed by notes with accidentals (sharps and naturals). A dynamic marking 'p' is present. The bass clef staff contains a piano accompaniment with chords and a bass line. A circled 'P' is written in the bass staff. A slur covers the first two measures of the treble staff.

Handwritten musical score for the second system. The treble staff continues the melodic line with notes and slurs. The bass staff shows a steady accompaniment with chords and a bass line. A slur covers the first two measures of the treble staff.

Handwritten musical score for the third system. The treble staff continues the melodic line with notes and slurs. The bass staff shows a steady accompaniment with chords and a bass line. A circled 'P' is written in the bass staff. A slur covers the first two measures of the treble staff.

(poco rit)

Handwritten musical score for the first system. It features a treble clef staff with a melodic line and a grand staff (piano and bass) with complex chordal textures. Dynamics include 'p' and 'poco rit'.

(sehr frei) (♩)

Handwritten musical score for the second system. It includes a treble clef staff with a melodic line and a grand staff with a 'cluster' of notes. Dynamics include 'p' and 'pp'.

Handwritten musical score for the third system. It features a treble clef staff with a melodic line and a grand staff with sustained notes. Dynamics include 'pp', 'f', and 'p'.

Fagott solo

Handwritten musical score for the fourth system, labeled 'Fagott solo'. It features a treble clef staff with a melodic line and a grand staff with sustained notes. Dynamics include 'pp', 'mf', and 'ppp'. Includes the instruction 'lunga' and 'D.C. mit II:II'.

(4+) ^{1+pp} _{2+p} _{3+f} (4+777) *imien moha crescendo*!
 Presto

The first system of the handwritten musical score consists of two staves: a piano staff (treble clef) and a bass staff (bass clef). The piano staff begins with a whole note chord of G4 and B4, followed by a half note chord of A4 and C5, and then a quarter note chord of B4 and D5. The bass staff starts with a whole note chord of G2 and B2, followed by a half note chord of A2 and C3, and then a quarter note chord of B2 and D3. There are various dynamic markings such as *pp* and *f*, and a crescendo hairpin. The system concludes with a melodic line in the piano staff consisting of eighth notes: G4, A4, B4, C5, B4, A4, G4.

The second system continues the musical score. The piano staff features a melodic line of eighth notes: G4, A4, B4, C5, B4, A4, G4. The bass staff has a rhythmic accompaniment with chords and single notes. A dynamic marking of *p* is present. The system ends with a fermata over the final notes.

The third system shows more complex piano and bass parts. The piano staff has a melodic line with many notes and dynamic markings. The bass staff has a rhythmic accompaniment with chords and single notes. The system concludes with a fermata over the final notes.

Handwritten musical score for the first system. The top staff is in treble clef and contains a melodic line with various accidentals (sharps, flats, naturals) and a fermata. The bottom two staves are a grand staff (piano) with rhythmic notation, including accents (^) and slurs. The system is divided into four measures.

nach arr. →

Handwritten musical score for the second system. The top staff continues the melodic line with a fermata and various accidentals. The bottom two staves show piano accompaniment with rhythmic notation and accents. The system is divided into four measures.

Prestissimo

Handwritten musical score for the third system, marked "Prestissimo". The top staff is in treble clef and contains a melodic line with a fermata and various accidentals. The bottom two staves are a grand staff (piano) with complex rhythmic notation, including accents (^) and slurs. The system is divided into six measures, ending with a wavy line.

3.

La Flor de la Canela

Larghetto

Handwritten musical score for the first system. It features two staves: a treble clef staff on top and a bass clef staff on the bottom. The key signature is one flat (B-flat major or D minor). The time signature is 6/8. The music includes various notes, rests, and dynamic markings such as *p* and *f*. There are also some handwritten annotations like '44' and '47' above the notes.

Handwritten musical score for the second system. It features two staves. The top staff has a treble clef and the bottom staff has a bass clef. The key signature is one flat. The music is characterized by a series of notes with accidentals, some of which are grouped together. There are dynamic markings like *p* and *f*, and some handwritten notes like '(frei)' and '3'. The system ends with a double bar line and a fermata.

Handwritten musical score for the third system. It features two staves. The top staff has a treble clef and the bottom staff has a bass clef. The key signature is one flat. The music is marked '(sehr frei)' (very free). It includes complex rhythmic patterns, dynamic markings like *pp* and *f*, and some handwritten notes like '3' and '44'. The system ends with a double bar line and a fermata.

rit (frei)

Handwritten musical score for the first system, featuring three staves. The notation includes slurs, accents, and dynamic markings such as *pp* and *ppp*. The tempo marking "rit (frei)" is written above the first staff.

bewegt (♩)

ff

mit

Handwritten musical score for the second system. It includes a section with the word "FINE" written vertically. Dynamic markings include *ff* and *p*. The tempo marking "bewegt (♩)" is written above the first staff.

breit

bewegt (in 2)

Handwritten musical score for the third system. It features a wide interval marked "breit" and a section marked "bewegt (in 2)". Dynamic markings include *f* and *ff*.

poco rit. ... (Zeit gr. mit d. min)

Lento

15

D. Ad. S.
al Fine

pp

4.

Allegro con brio

Handwritten musical score for the first system, measures 1-6. The music is in 3/8 time and G major. The right hand features a melodic line with slurs and accents, while the left hand provides a rhythmic accompaniment with eighth notes. A circled '2' is written at the end of the first staff.

Handwritten musical score for the second system, measures 7-12. The music continues in 3/8 time and G major. The right hand has a melodic line with slurs and accents, and the left hand has a rhythmic accompaniment. A circled '2' is written at the end of the first staff.

Handwritten musical score for the third system, measures 13-18. The music continues in 3/8 time and G major. The right hand features a melodic line with slurs and accents, and the left hand has a rhythmic accompaniment. A circled '2' is written at the end of the first staff.

Handwritten musical score for the first system. It consists of two staves: a treble clef staff and a bass clef staff. The treble staff begins with a whole rest, followed by a melodic line with a wavy line underneath, and then a series of notes with accidentals. The bass staff contains chords and rhythmic markings. A 'dim' (diminuendo) marking is present above the final measure of the system.

Handwritten musical score for the second system. It features two staves. The treble staff starts with a whole rest, followed by notes with a wavy line underneath, and then a series of notes with rests. The bass staff contains chords and rhythmic markings. A 'f' (forte) dynamic marking is present at the beginning of the system.

Handwritten musical score for the third system. It features two staves. The treble staff starts with a whole rest, followed by notes with a wavy line underneath, and then a series of notes with rests. The bass staff contains chords and rhythmic markings. A 'dim' (diminuendo) marking is present at the end of the system.

Handwritten musical score for the first system, featuring three staves. The notation includes slurs, accents, and dynamic markings such as *f* and *p*. The music is written in a complex, possibly chromatic, style.

Handwritten musical score for the second system, showing melodic lines with slurs and dynamic markings such as *p* and *dim*. The notation includes various accidentals and articulation marks.

Handwritten musical score for the third system, featuring a melodic line with a triplet and dynamic markings such as *mp* and *p*. The notation includes slurs and accents.

Handwritten musical score for the first system. The top staff is in treble clef, starting with a forte (f) dynamic. It features a melodic line with various accidentals (sharps, flats, naturals) and a fermata. The bottom staff is a grand staff (treble and bass clefs) with piano accompaniment, including chords and rhythmic markings.

Handwritten musical score for the second system. The top staff is in treble clef, showing a melodic line with various accidentals and a fermata. The bottom staff is a grand staff with piano accompaniment, including chords and rhythmic markings.

Handwritten musical score for the third system. The top staff is in treble clef, showing a melodic line with various accidentals and a fermata. The bottom staff is a grand staff with piano accompaniment, including chords and rhythmic markings. The system concludes with a circled double bar line.

Handwritten musical score for the first system. The top staff is in treble clef and contains a melodic line with notes, rests, and accents. The bottom staff is in bass clef and contains a bass line with notes and rests. Dynamic markings include *mf* and *p*. There are also some handwritten annotations like 'mf' and 'p' written vertically.

Handwritten musical score for the second system. The top staff is in treble clef and contains a melodic line with notes, rests, and accents. The bottom staff is in bass clef and contains a bass line with notes and rests. Dynamic markings include *mf* and *p*. There are also some handwritten annotations like 'mf' and 'p' written vertically.

Handwritten musical score for the third system. The top staff is in treble clef and contains a melodic line with notes, rests, and accents. The bottom staff is in bass clef and contains a bass line with notes and rests. Dynamic markings include *pp* and *f*. There are also some handwritten annotations like 'pp' and 'f' written vertically.

Handwritten musical score for the first system. The top staff is for a horn, featuring a large slur over four measures with various notes and accidentals. The bottom staff is for piano, with chords and a circled 'f' in the third measure.

Handwritten musical score for the second system. The top staff is for a horn, with a slur over four measures. The bottom staff is for piano, starting with a circled 'pp' and a diagonal line, followed by notes and a circled 'f' in the second measure.

Handwritten musical score for the third system. The top staff is for a horn, with a slur over four measures. The bottom staff is for piano, with chords and a circled 'f' in the second measure.

(poco rit) bei f ohne rit...

sehr frei gestalten) viel Vibrato

(♩)

Lento

pp =

G.P.

pp

sehr breit (appassionata)

pp =

ff

mit

Lento (frei)

pp

pp

Handwritten musical score for the first system. The top staff is a treble clef with a piano part. The bottom staff is a bass clef with a melodic line. The music is in 3/4 time. The first measure has a piano dynamic marking 'pp' and the word 'sant'. The second measure has a fermata over the notes. The third measure has a triplet of eighth notes. The fourth measure has a fermata over the notes. The bass line consists of a chromatic scale: C4, C#4, D4, D#4, E4, F4, F#4, G4, G#4, A4, A#4, B4, B#4, C5.

poco rit

Handwritten musical score for the second system. The top staff is a treble clef with a piano part. The bottom staff is a bass clef with a melodic line. The music is in 3/4 time. The first measure has a piano dynamic marking 'pp'. The second measure has a fermata over the notes. The third measure has a piano dynamic marking 'ff'. The fourth measure has a piano dynamic marking 'f'. The fifth measure has a piano dynamic marking 'ff'. The sixth measure has a piano dynamic marking 'p'. The bass line consists of a chromatic scale: C4, C#4, D4, D#4, E4, F4, F#4, G4, G#4, A4, A#4, B4, B#4, C5.

subito (leidenschaftlich bewegt) (♩)

Handwritten musical score for the third system. The top staff is a treble clef with a piano part. The bottom staff is a bass clef with a melodic line. The music is in 3/4 time. The first measure has a piano dynamic marking 'ff'. The second measure has a piano dynamic marking 'ff'. The third measure has a piano dynamic marking 'ff'. The fourth measure has a piano dynamic marking 'ff'. The fifth measure has a piano dynamic marking 'ff'. The sixth measure has a piano dynamic marking 'ff'. The bass line consists of a chromatic scale: C4, C#4, D4, D#4, E4, F4, F#4, G4, G#4, A4, A#4, B4, B#4, C5.

Handwritten musical score for the first system. The treble clef part begins with a series of notes, followed by a long horizontal line with an accent (^) above it. The bass clef part features a series of notes with sharp signs (#) and an accent (^) above the first note. The system concludes with two vertical bar lines and some scribbled-out notes.

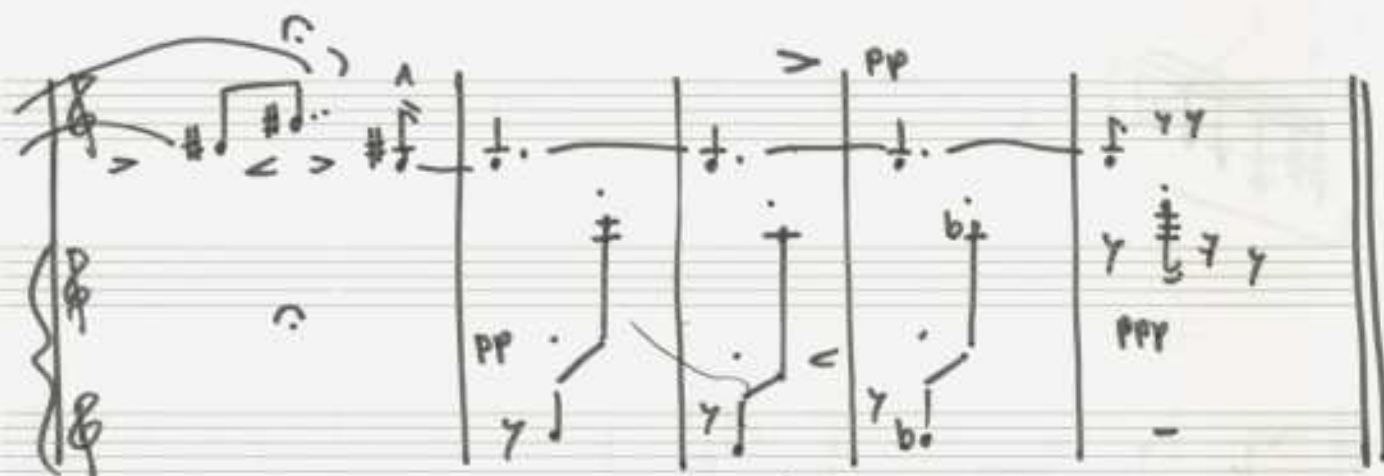
Handwritten musical score for the second system. The treble clef part includes a triplet of notes and an accent (^) above a note. The bass clef part contains a long, ascending melodic line with several sharp signs (#) and an accent (^) above the first note. The system ends with two vertical bar lines and some scribbled-out notes.

Handwritten musical score for the third system. The treble clef part shows a melodic line with several sharp signs (#) and an accent (^) above the first note. The bass clef part features a complex, wavy line with an accent (^) above it. The system concludes with two vertical bar lines and the markings "Kl." and "G.P." to the right. Below the bass clef part, the text "(poco rit)" is written.

Fagott (gang frei) (♩)
Lento

pp:

viel V.br.



(mit)

dal
al

Prestissimo

Handwritten musical score for the first system. It consists of two staves: a treble clef staff and a bass clef staff. The treble staff begins with a treble clef, a key signature of one flat (B-flat), and a common time signature. The first measure contains a whole note B-flat. The second measure contains a whole rest. The third measure contains a whole note B-flat with a wavy line above it. The fourth measure contains a whole note B-flat. The fifth measure contains a whole note B-flat. The bass staff contains various notes and rests, including a whole rest in the first measure, and notes with accents and slurs in subsequent measures.

Handwritten musical score for the second system. It consists of two staves: a treble clef staff and a bass clef staff. The treble staff begins with a treble clef, a key signature of one flat (B-flat), and a common time signature. The first measure contains a whole rest. The second measure contains a whole rest. The third measure contains a whole note B-flat with a wavy line above it. The fourth measure contains a whole note B-flat with a wavy line above it. The fifth measure contains a whole note B-flat with a wavy line above it. The bass staff contains various notes and rests, including a whole rest in the first measure, and notes with accents and slurs in subsequent measures.

Handwritten musical score for the third system. It consists of two staves: a treble clef staff and a bass clef staff. The treble staff begins with a treble clef, a key signature of one flat (B-flat), and a common time signature. The first measure contains a whole note B-flat with a wavy line above it. The second measure contains a whole note B-flat with a wavy line above it. The third measure contains a whole note B-flat with a wavy line above it. The fourth measure contains a whole note B-flat with a wavy line above it. The fifth measure contains a whole note B-flat with a wavy line above it. The bass staff contains various notes and rests, including a whole rest in the first measure, and notes with accents and slurs in subsequent measures.

Handwritten musical score system 1. It consists of three staves. The top staff is in treble clef with a key signature of one sharp (F#) and a common time signature (C). It features a melodic line with various ornaments and a large slur over the final two measures. The middle staff is in treble clef and contains a melodic line with a triplet in the first measure and a large slur over the final two measures. The bottom staff is in bass clef and contains a bass line with a few notes and a large slur over the final two measures.

Handwritten musical score system 2. It consists of three staves. The top staff is in treble clef with a key signature of one sharp (F#) and a common time signature (C). It features a melodic line with a triplet in the first measure and a large slur over the final two measures. The middle staff is in treble clef and contains a melodic line with a triplet in the first measure and a large slur over the final two measures. The bottom staff is in bass clef and contains a bass line with a few notes and a large slur over the final two measures.

Handwritten musical score system 3. It consists of three staves. The top staff is in treble clef with a key signature of one sharp (F#) and a common time signature (C). It features a melodic line with a triplet in the first measure and a large slur over the final two measures. The middle staff is in treble clef and contains a melodic line with a triplet in the first measure and a large slur over the final two measures. The bottom staff is in bass clef and contains a bass line with a few notes and a large slur over the final two measures. The system concludes with a double bar line and the word "Fin" written vertically on the right side.

ad. lib. (Zesur)