

Notenheft

Teil ①

Flöte / Oboe

Oboe

Handwritten musical score for the first system. The notation includes a treble clef, a key signature of one sharp (F#), and a 3/4 time signature. The melody line features slurs and accents. The piano accompaniment consists of two staves with chords and arpeggios. A bass line is written on a separate staff at the bottom of the system.

Handwritten musical score for the second system. The notation continues from the first system, maintaining the treble clef, key signature of one sharp, and 3/4 time signature. The piano accompaniment staves show more complex chordal textures. The melody line continues with slurs and accents.

Handwritten musical score for the first system. It consists of five staves. The top staff is a vocal line with a treble clef and a key signature of one sharp (F#). The music includes various note values, rests, and dynamic markings such as *ff* and *pp*. The piano accompaniment is written on the next three staves, with a grand staff (treble and bass clefs) and includes chords and melodic lines. The bottom staff is a bass line with a bass clef. The system is divided into measures by vertical bar lines.

Handwritten musical score for the second system, continuing from the first. It also consists of five staves. The vocal line continues with similar notation. The piano accompaniment features dynamic markings *ffp* and *pp*. The system concludes with a double bar line and a fermata over the final note.

Handwritten musical score for the first system. The system consists of four staves. The top staff is a treble clef staff containing a melodic line with various notes, rests, and slurs. The second and third staves form a grand staff (piano and bass clefs) with accompaniment. The bottom staff is a bass clef staff with a bass line. The music includes various notes, rests, and dynamic markings.

Handwritten musical score for the second system. The system consists of four staves. The top staff is a treble clef staff containing a melodic line with various notes, rests, and slurs. The second and third staves form a grand staff (piano and bass clefs) with accompaniment. The bottom staff is a bass clef staff with a bass line. The music includes various notes, rests, and dynamic markings such as *mf* and *f*.

Handwritten musical score for the first system. The top staff is in treble clef and contains a melodic line with several slurs and accents. The bottom two staves are a grand staff (treble and bass clefs) with piano accompaniment. The music is divided into two measures by a vertical bar line. The key signature has one flat (B-flat).

Handwritten musical score for the second system. The top staff is in treble clef and contains a series of chords, some with slurs. The bottom two staves are a grand staff with piano accompaniment. The music is divided into two measures by a vertical bar line. The key signature has one flat (B-flat). The word "fp=" is written in the piano part of both measures.

Handwritten musical score for the first system. The top staff is a treble clef staff with a melodic line. The middle and bottom staves are a grand staff (treble and bass clefs) with piano accompaniment. The score is divided into two measures by a vertical bar line. The first measure contains a melodic line with various accidentals (sharps, flats, naturals) and a piano accompaniment starting with a *fp* dynamic. The second measure continues the melodic line with a *fp* dynamic and includes some slurs and accents. There are some scribbles and corrections in the first measure of the piano part.

Handwritten musical score for the second system. The top staff continues the melodic line from the first system, featuring a large slur over the first two measures and a *fp* dynamic. The middle and bottom staves continue the piano accompaniment, with dynamics ranging from *fp* to *f*. The score is divided into two measures by a vertical bar line. The piano part includes various chords and arpeggiated figures.

Handwritten musical score for the first system. The top staff is a vocal line in treble clef, starting with a key signature of one sharp (F#) and a common time signature. It features a melodic line with various intervals and a final note marked with a sharp sign. The piano accompaniment consists of two staves (treble and bass clefs) with chords and arpeggiated figures. The first measure of the piano part is marked with a dynamic of *ppp* and includes a fermata. The second measure has a dynamic of *fp*. The system concludes with a double bar line and a final chord marked with a sharp sign.

Handwritten musical score for the second system. The vocal line continues with a melodic phrase that includes a trill-like figure. The piano accompaniment features chords and arpeggiated patterns. The first measure of the piano part is marked with a dynamic of *ppp*. The system concludes with a double bar line and a final chord marked with a sharp sign.

7

Handwritten musical score for the first system. It consists of five staves. The top staff is a piano part with a circled 'p' and a circled '93'. The second and third staves are violin parts with various notes and slurs. The fourth and fifth staves are empty. A handwritten note in the upper right of the system reads "(1 TR. (nicht Dämpfer ab!))".

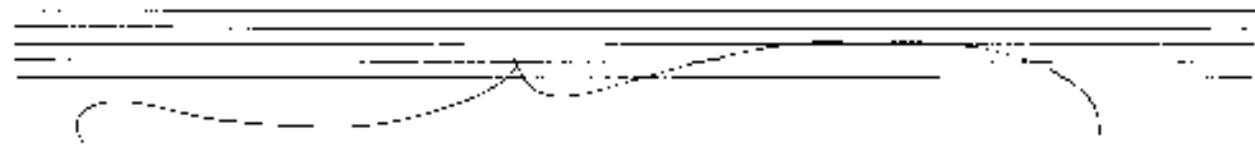
Handwritten musical score for the second system. It consists of five staves. The top staff is a piano part with a circled 'p' and the word 'solo' written above it. The second staff is a violin part with various notes and slurs. The third, fourth, and fifth staves are empty.

Handwritten musical score for the first system. It consists of a grand staff with treble and bass clefs. The key signature has one sharp (F#) and the time signature is 3/4. The melody in the treble clef starts with a quarter note G4, followed by a quarter note A4, a quarter note B4, and a quarter note C5. The piano accompaniment in the bass clef features chords and eighth notes.

Handwritten musical score for the second system. It continues the piece with a grand staff. The key signature remains one sharp (F#) and the time signature is 3/4. The melody in the treble clef continues with slurs. The piano accompaniment in the bass clef includes chords and eighth notes. The word "affettuoso" is written in the bass clef staff.

Handwritten musical score for the first system. It consists of a grand staff with a treble clef on the upper staff and a bass clef on the lower staff. The music is written in a key with one sharp (F#) and a common time signature (C). The piece begins with a piano (*p*) dynamic marking. The notation includes quarter notes, eighth notes, and rests, with various slurs and phrasing marks. A fermata is placed over a note in the second measure of the upper staff. The system concludes with a double bar line.

Handwritten musical score for the second system. It continues the piece from the first system. The notation is consistent, featuring a grand staff with treble and bass clefs. The music includes quarter notes, eighth notes, and rests, with slurs and phrasing marks. A fermata is present over a note in the second measure of the upper staff. The system ends with a double bar line.



Handwritten musical score for the first system, consisting of five staves. The top staff contains a melodic line with a long slur. The second staff contains a complex chordal accompaniment with various notes and accidentals. The third staff contains a bass line with a circled '4+' and a slur. The fourth and fifth staves are empty.



Handwritten musical score for the second system, consisting of five staves. The top staff contains a melodic line with a long slur. The second staff contains a complex chordal accompaniment with various notes and accidentals. The third staff contains a bass line with a slur. The fourth and fifth staves are empty.

Handwritten musical score for the first system. It consists of a grand staff with treble and bass clefs. The music is written in a key with one sharp (F#) and a common time signature. The score includes a piano (p) dynamic marking. The notation features several measures with notes, rests, and slurs. A circled number '3' is written above the staff in the second measure. There are also some handwritten annotations like '43' and '44' near the notes.

Handwritten musical score for the second system. It continues the piece with similar notation and dynamics. The score includes a piano (p) dynamic marking. The notation features several measures with notes, rests, and slurs. There are some handwritten annotations like '47' and '48' near the notes.

Violino

Basso

Violoncello

Handwritten musical score for the first system. It features a treble clef, a key signature of one sharp (F#), and a 2/4 time signature. The music consists of a melody in the treble clef and a bass line in the bass clef. The melody is marked with a slur and includes a triplet of eighth notes. The bass line consists of quarter notes. There are some handwritten annotations, including '5' and '4/4' in the first measure.

Handwritten musical score for the second system. It features a treble clef, a key signature of one sharp (F#), and a 2/4 time signature. The melody in the treble clef includes a triplet of eighth notes and a slur. The bass line in the bass clef consists of quarter notes. There are some handwritten annotations, including '6' and '7' in the second measure.

Handwritten musical score for the first system. The top staff is in treble clef, showing a melodic line with slurs and accents. The middle staff is in bass clef, containing chords with accidentals (flats). The bottom staff is a grand staff with a bass line. A circled 'A' is written in the first measure of the middle staff.

Handwritten musical score for the second system. The top staff is in treble clef, showing a melodic line with slurs and accents. The middle staff is in bass clef, containing chords with accidentals (sharps). The bottom staff is a grand staff with a bass line.

Handwritten musical score for the first system. The top staff is in treble clef, showing a melodic line with notes and accidentals (flats and sharps). The middle staff is in bass clef, showing a bass line with notes and accidentals. There are dynamic markings such as *pp* and *f*. A large bracket spans across the bottom two staves, which are currently empty.

Handwritten musical score for the second system. On the left side, the time signature $\frac{4}{4}$ is written vertically. The top staff is in treble clef, containing notes and accidentals. The middle staff is in bass clef, with the word *Salvo* written above it and a circled sharp sign ($\#$) below it. A large bracket spans across the bottom two staves, which are currently empty.

Handwritten musical score for piano and violin/viola. The score is divided into two systems. The first system has three staves: piano (top), violin/viola (middle), and a lower staff (bottom). The second system also has three staves. The piano part features chords and melodic lines with various markings like accents and slurs. The violin/viola part has a melodic line with slurs. The lower staff contains a wavy line, possibly representing a bowing technique or a specific sound effect.

Handwritten musical score for the first system. It consists of three staves. The top two staves are a grand staff with treble and bass clefs. The bottom staff has a bass clef. The notation includes complex chords, melodic lines, and dynamic markings. A large bracket spans across the bottom of the first system.

ad lib

Handwritten musical score for the second system. It consists of five staves labeled F2, 3TR, 3POS, Basso, and Percussion. The notation includes rhythmic patterns, dynamic markings like "offa", and various musical symbols. A circled "H" is present in the Basso staff.

Handwritten musical score for the first system, consisting of five staves. The first staff has a treble clef and a key signature of one sharp (F#). The second and third staves are grouped with a brace on the left and have a key signature of two sharps (F# and C#). The fourth staff has a bass clef and a key signature of one sharp (F#). The fifth staff is empty. The music is mostly blank with some faint lines and a few notes.

Reilly w. Solo

Handwritten musical score for the second system, consisting of five staves. The first staff has a treble clef and a key signature of one sharp (F#). The second and third staves are grouped with a brace on the left and have a key signature of two sharps (F# and C#). The fourth staff has a bass clef and a key signature of one sharp (F#). The fifth staff is empty. The music is mostly blank with some faint lines and a few notes.

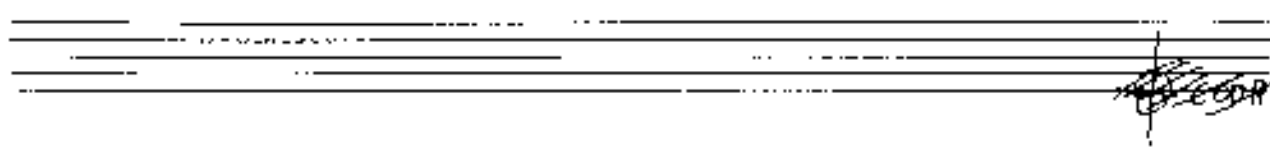
Handwritten musical score for the first system. It consists of a grand staff with treble and bass clefs, and a piano part below. The piano part is marked "Solo". The score is divided into two measures by a vertical bar line.

Handwritten musical score for the second system. It consists of a grand staff with treble and bass clefs, and a piano part below. The piano part is marked "Solo". The score is divided into two measures by a vertical bar line. The first measure contains several chords with accidentals and dynamics markings.

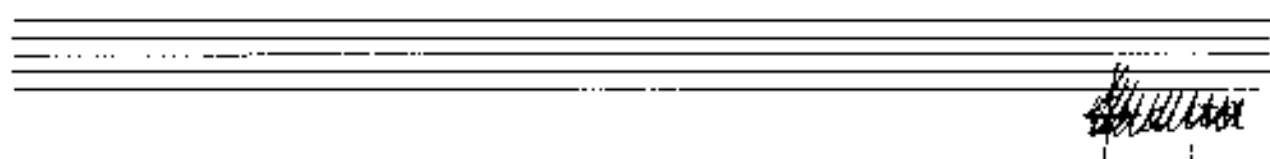
Solo

Solo

H



Handwritten musical score for the first system. It consists of three staves: a piano staff (top), a grand staff (middle), and a bass staff (bottom). The piano staff contains two measures of music with notes and a slur. The grand staff contains two measures of music with chords and a slur. The bass staff contains two measures of music with notes. There are handwritten markings such as a sharp sign (#) and a '7' in the piano and grand staves.



Handwritten musical score for the second system. It consists of three staves: a piano staff (top), a grand staff (middle), and a bass staff (bottom). The piano staff contains two measures of music with notes, slurs, and accents (^). The grand staff contains two measures of music with chords and a slur. The bass staff contains two measures of music with notes. There are handwritten markings such as a sharp sign (#) and a '7' in the piano and grand staves.

Dot Segno

1.

2. (rit + din →)

Teil 2

~~slow~~ langsam (nicht schleppend)

Handwritten musical score for the first system. It consists of five staves. The top two staves are empty. The third staff has a treble clef and a key signature of one sharp (F#). It contains a melodic line with notes and rests, marked with a circled '4' and the word 'Pelo'. The fourth staff contains a bass line with notes and rests. The fifth staff is empty. A circled instruction 'CON SORD.' is written in the second measure of the third staff. There are various performance markings such as accents and slurs throughout the piece.

Handwritten musical score for the second system. It consists of five staves. The top two staves are empty. The third staff has a treble clef and a key signature of one sharp (F#). It contains a melodic line with notes and rests, marked with a circled 'P' and the word 'CON SORD.'. The fourth staff contains a bass line with notes and rests, also marked with a circled 'P'. The fifth staff is empty. There are various performance markings such as accents and slurs throughout the piece.

Handwritten musical score for the first system. It consists of three staves. The top staff is a vocal line with a melodic line and some lyrics. The middle two staves are piano accompaniment, with chords and some melodic fragments. Dynamics include *fp* (fortissimo piano) and *fp*. There are also some markings like *fp =* and *fp 60*. The notation includes notes, rests, and some accidentals.

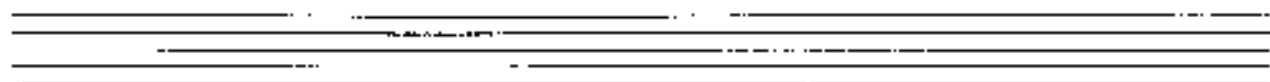
Handwritten musical score for the second system. It also consists of three staves. The top staff continues the vocal line. The middle two staves continue the piano accompaniment. Dynamics include *fp* and *fpfp*. There are also some markings like *fpfp* and *fpfp*. The notation includes notes, rests, and some accidentals.

Handwritten musical score for the first system. It consists of three staves. The top staff is a vocal line with a melodic line and some slurs. The middle and bottom staves are piano accompaniment. The piano part includes chords and moving lines. Dynamic markings include *ff* (fortissimo) and *f* (forte). There are also some handwritten notes and slurs throughout the system.

Handwritten musical score for the second system. It consists of three staves. The top staff has a melodic line with a 'CODA' marking at the end. The middle and bottom staves are piano accompaniment. The piano part includes chords and moving lines. Dynamic markings include *ff* (fortissimo) and *f* (forte). There are also some handwritten notes and slurs throughout the system.

Handwritten musical score for the first system. It consists of three staves. The top staff is a treble clef with a key signature of one sharp (F#) and a 3/4 time signature. The word "Solo" is written above the first measure. The melody features a triplet of eighth notes in the first measure, followed by quarter notes and eighth notes. The second measure contains a triplet of eighth notes. The bottom two staves are bass clef, with the first staff containing a simple bass line and the second staff being mostly empty. A large bracket spans across the bottom two staves of the first system.

Handwritten musical score for the second system. It consists of three staves. The top staff is a treble clef with a key signature of one sharp (F#) and a 3/4 time signature. The melody continues with eighth and quarter notes, including some beamed eighth notes. The bottom two staves are bass clef, with the first staff containing a simple bass line and the second staff being mostly empty. A large bracket spans across the bottom two staves of the second system.



Handwritten musical score for the first system. It consists of three staves. The top staff is a piano part with a treble clef, containing two measures of dense, sixteenth-note chords. The middle staff is a bass part with a bass clef, containing two measures of eighth-note chords. The bottom staff is empty. Dynamics include a forte 'f' in the piano staff and a fortissimo 'ff' in the bass staff. A large, wavy line is drawn across the bottom two staves of this system.

Handwritten musical score for the second system. It consists of three staves. The top staff is a piano part with a treble clef, containing two measures of dense, sixteenth-note chords. The middle staff is a bass part with a bass clef, containing two measures of eighth-note chords. The bottom staff is empty. Dynamics include a fortissimo 'ff' in the piano staff and a fortissimo 'ff' in the bass staff. A large, wavy line is drawn across the bottom two staves of this system.

Handwritten musical score for the first system. The top staff is in treble clef with a key signature of one sharp (F#) and a 2/4 time signature. The music consists of two staves. The first staff contains a series of notes with various accidentals (sharps, flats, naturals) and rests. The second staff contains a bass line with notes and rests. A large bracket spans across the bottom of the system.

Handwritten musical score for the second system. The top staff is in treble clef with a key signature of one sharp (F#) and a 2/4 time signature. The music consists of two staves. The first staff contains a series of notes with various accidentals (sharps, flats, naturals) and rests. The second staff contains a bass line with notes and rests. A large bracket spans across the bottom of the system.

Handwritten musical score for the first system. It consists of two systems of staves. The upper system includes a piano part with dense chordal textures and a violin part with a melodic line. The piano part features a sequence of chords: a triad with a sharp sign, followed by a triad with a sharp sign, then a triad with a sharp sign, and finally a series of chords including a triad with a sharp sign, a dyad with a flat sign, and a dyad with a sharp sign. The violin part has a melodic line with a sharp sign and a flat sign.

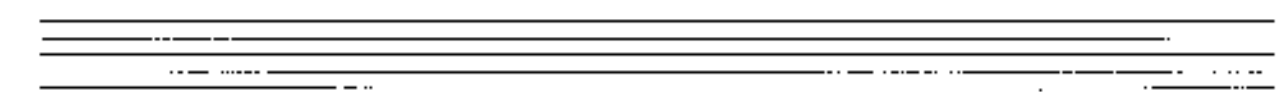
Handwritten musical score for the second system. It consists of two systems of staves. The upper system includes a piano part with complex chordal textures and a violin part with a melodic line. The piano part features a sequence of chords: a triad with a sharp sign, a triad with a sharp sign, a triad with a sharp sign, and finally a series of chords including a triad with a sharp sign, a dyad with a sharp sign, and a dyad with a sharp sign. The violin part has a melodic line with a sharp sign and a flat sign. Dynamic markings include f and pp .

Handwritten musical score for the first system. The system consists of five staves. The top staff is marked with a piano (*p*) dynamic. The notation includes complex melodic lines with slurs and accents, and chordal textures in the lower staves. The bottom staff contains a rhythmic pattern of notes.

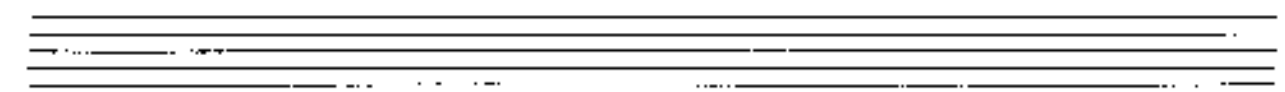
Handwritten musical score for the second system. This system continues the musical notation from the first system. It features complex phrasing with slurs and accents across multiple staves. The notation is dense and includes various dynamic markings and articulation symbols.

Handwritten musical score for a piano solo section. The score consists of five staves. The first staff has a treble clef and a key signature of one flat. The second and third staves are grouped together with a brace on the left. The fourth staff has a bass clef. The word "Solo" is written in the left margin of the fourth staff. The word "Offen" is circled in the right margin of the second staff. The music is mostly rests with some faint notes and a fermata over the first measure of the second staff.

Handwritten musical score for a piano section. The score consists of five staves. The first staff has a treble clef and a key signature of one flat. The second and third staves are grouped together with a brace on the left. The fourth staff has a bass clef. The music features complex chords with many accidentals (sharps and flats) and accents (^) above the notes. There are also some markings like "x" and "H" on the second and third staves. The music is mostly rests with some faint notes and a fermata over the first measure of the second staff.



Solo



71

Handwritten notes at the top of the page, possibly indicating a title or section.

Handwritten musical score for the first system. It features a treble clef, a key signature of one sharp (F#), and a 3/4 time signature. The music includes a melodic line with a triplet of eighth notes, a circled 'mp' dynamic marking, and a circled 'f' dynamic marking. The bass line is mostly empty.

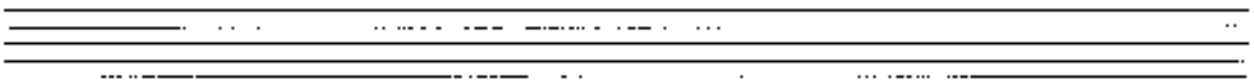
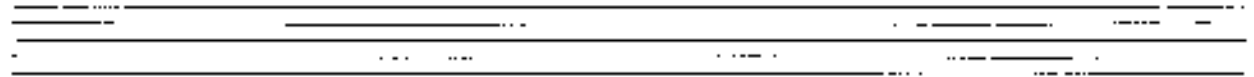
Handwritten notes between the first and second systems, possibly indicating a section change or rehearsal mark.

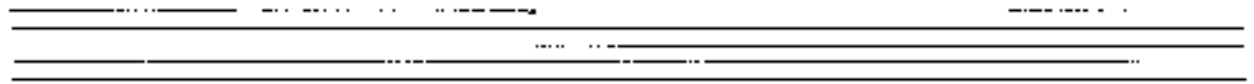
Handwritten musical score for the second system. It features a treble clef, a key signature of one sharp (F#), and a 3/4 time signature. The music includes a melodic line with a circled 'p' dynamic marking, a circled 'mp' dynamic marking, and a circled 'f' dynamic marking. The bass line has some notes and rests.

Handwritten musical score for the first system. The notation is on a grand staff with a treble clef. The key signature has one sharp (F#). The dynamic marking is *pp*. A circled number '33' is present. A triplet of eighth notes is marked with a '3' and a slur. There are also slurs and accents over other notes.

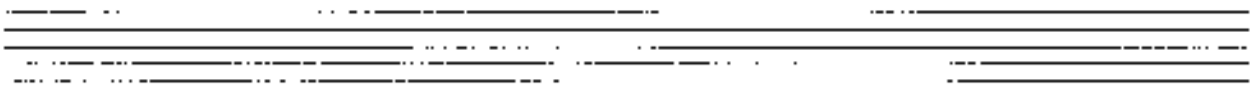
Sehr langsam

Handwritten musical score for the second system. The notation is on a grand staff with a treble clef and a bass clef. The notation is mostly blank, with some faint markings and a circled '3' in the bass line.

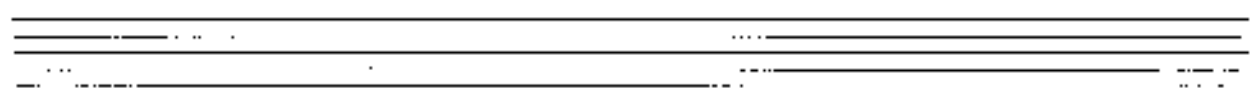




Handwritten musical score for two staves. The top staff is in treble clef and the bottom staff is in bass clef. Both staves contain a melodic line with notes, rests, and slurs. There are handwritten markings 'RH' and 'LH' with arrows pointing to specific notes in the two staves respectively. The music is divided into measures by vertical bar lines.



Handwritten musical score for two staves. The top staff is in treble clef and the bottom staff is in bass clef. The staves are mostly empty, with some scribbled lines on the left side. The text "CON SORD." is written in the first measure of the top staff, with an upward-pointing arrow above it and a downward-pointing arrow below it. The music is divided into measures by vertical bar lines.



Solo
Pizzicato

TRD

Pos

Brass

Sulph

Block (A)

Block (A)

Pizzicato
Solo

Block (A)

Handwritten musical notation on a grand staff. The upper staff contains a melodic line with a treble clef, a key signature of one sharp (F#), and a common time signature (C). The notation includes a circled 'Solo' marking, a slur over the first two measures, and a slur over the last two measures. The lower staff is empty.

Handwritten musical notation on a grand staff. The upper staff is empty. The lower staff contains a large, hand-drawn bracket spanning the width of the system. Inside the bracket, the word 'Block' is written, followed by a circled 'A'.

Handwritten musical notation on a grand staff. The upper staff contains a melodic line with a treble clef, a key signature of one sharp (F#), and a common time signature (C). The notation includes a circled 'Solo' marking, a slur over the first two measures, and a slur over the last two measures. The lower staff is empty.

Handwritten musical notation on a grand staff. The upper staff is empty. The lower staff contains a large, hand-drawn bracket spanning the width of the system. Inside the bracket, the word 'Block' is written, followed by a circled 'A'.

Handwritten musical notation for the first system. The treble clef staff contains a melodic line in G major (one sharp, F#) with eighth notes and a fermata. The bass staff contains a whole rest and the handwritten text "Block (A)".

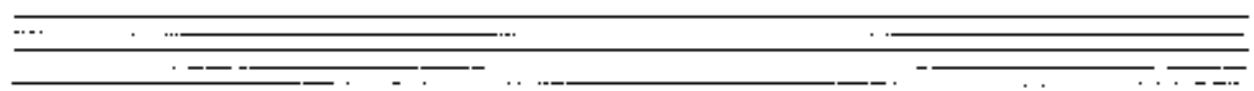
Handwritten musical notation for the second system. The treble clef staff contains a melodic line in G major (one sharp, F#) with eighth notes and a fermata. The bass staff contains a whole rest and the handwritten text "Block (A)". The word "cresc." is written above the bass staff.

Handwritten musical notation for the third system. The treble clef staff contains a melodic line in G major (one sharp, F#) with eighth notes and a fermata. The bass staff contains a whole rest and the handwritten text "Block (A)".

Block A

Block A

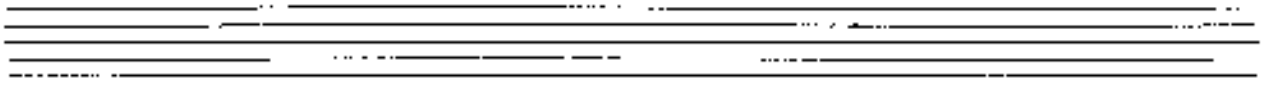
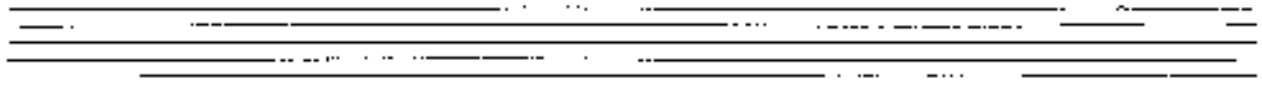
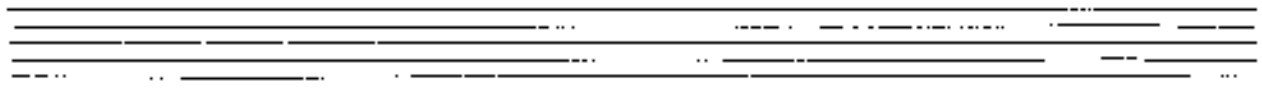
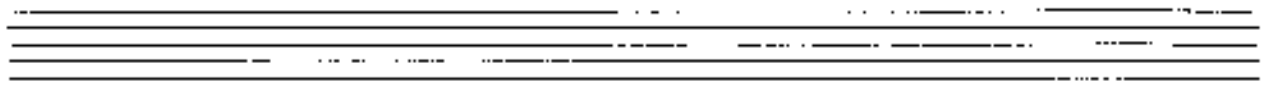
Block A



Handwritten musical score for a string quartet. The score is divided into four staves: Violin I (labeled 'A'), Violin II, Viola (labeled 'TR.'), and Cello/Double Bass (labeled 'Pos.', 'Bass', and 'Schlagwerk').

The first two staves (Violin I and II) contain handwritten notes and rests. The third staff (Viola) contains handwritten notes with accidentals (sharps and flats) and dynamic markings such as mf and mp . The fourth staff (Cello/Double Bass) contains handwritten notes and rests.

Below the staves, there are two large curly braces. The first brace is labeled "Block B" and spans the first two staves. The second brace is also labeled "Block B" and spans the third and fourth staves.



Handwritten musical notation on a grand staff. The treble clef staff contains two measures of music. The first measure starts with a circled '7' and contains notes G4, A4, B4, C5, B4, A4, G4. The second measure contains notes G4, F4, E4, D4, C4, B3, A3, G3. A bracket below the staff spans both measures and is labeled "Pluck [B]".

Handwritten musical notation on a grand staff. The treble clef staff contains two measures of music. The first measure contains notes G4, A4, B4, C5, B4, A4, G4. The second measure contains notes G4, F4, E4, D4, C4, B3, A3, G3. A bracket below the staff spans both measures and is labeled "Pluck [B]".

Handwritten musical notation for the first system. The top staff is in treble clef with a key signature of one sharp (F#). The bottom staff is in bass clef and contains a circled 'F' and a bracketed 'B' with a double-headed arrow between them. The music consists of two measures in each part.

Handwritten musical notation for the second system. The top staff is in treble clef with a key signature of one flat (Bb). The bottom staff is in bass clef and contains a circled 'F' and a bracketed 'B' with a double-headed arrow between them. The music consists of two measures in each part.

Handwritten musical notation for the third system. The top staff is in treble clef with a key signature of one flat (Bb). The bottom staff is in bass clef and contains a circled 'F' and a bracketed 'B' with a double-headed arrow between them. The music consists of two measures in each part, with triplets indicated by a '3' over the notes.

Handwritten musical notation on a grand staff (treble and bass clefs). A circled sharp sign (#) is present in the treble clef. A bracket above the staff spans the first two measures. A circled sharp sign (#) is also present in the bass clef. The text "Block B" is written below the staff.

Handwritten musical notation on a grand staff. The first measure contains notes with a sharp sign (#) and a bracket above. The second measure contains notes with a flat sign (b) and a bracket above. A circled sharp sign (#) is present in the treble clef. The text "Block B" is written below the staff.

Handwritten musical notation on a grand staff. A circled sharp sign (#) is present in the treble clef. A circled sharp sign (#) is also present in the bass clef. The text "Block B" is written below the staff.

Flute Solo

Flute Solo

subito p

p sempre cresc.

Block A

Block A

ff

Block A

Handwritten musical notation for the first system. The top staff contains a melodic line with notes and accidentals (sharps, naturals, flats) and slurs. The bottom staff shows a bass line with a large bracket and the handwritten word "Block" followed by a circled "A".

Handwritten musical notation for the second system. The top staff features a melodic line with a sequence of notes, some with slurs and accents. The bottom staff has a large bracket and the word "Block" with a circled "A". An arrow labeled "Cuerpo" points to the left.

Handwritten musical notation for the third system. The top staff shows a melodic line with notes, slurs, and accents. The bottom staff includes a circled "c" with a plus sign, a large bracket, and the word "Block" with a circled "A".

ff (Flutes 3)

Block (H)

ff (Flutes 3)

Block (H)

ff (Flutes 3)

Block (H)

Handwritten musical notation on a grand staff. The top staff contains a melodic line with notes, a circled 'H', and a circled 'F'. The bottom staff contains a large bracket labeled 'Block B'.

Handwritten musical notation on a grand staff. The top staff contains a melodic line with notes and a circled 'F'. The bottom staff contains a large bracket labeled 'Block B'.

Handwritten musical notation on a grand staff. The top staff contains a melodic line with notes and a circled 'F'. The bottom staff contains a large bracket labeled 'Block B'.

Handwritten musical notation on a five-line staff. The top line contains a melodic line with a treble clef and a key signature of one sharp (F#). The bottom line contains a bass line with a bass clef. A bracket labeled "Block B" spans across both staves. The notation is highly stylized and appears to be a sketch or a specific dialect of musical notation.

Handwritten musical notation on a five-line staff. The top line contains a melodic line with a treble clef and a key signature of one sharp (F#). The bottom line contains a bass line with a bass clef. A bracket labeled "Block B" spans across both staves. The notation is highly stylized and appears to be a sketch or a specific dialect of musical notation.

Handwritten musical notation on a five-line staff. The top line contains a melodic line with a treble clef and a key signature of one sharp (F#). The bottom line contains a bass line with a bass clef. A bracket labeled "Block B" spans across both staves. The notation is highly stylized and appears to be a sketch or a specific dialect of musical notation.

Handwritten musical notation on a five-line staff. The top line contains a melodic line with a treble clef and a key signature of one sharp (F#). The bottom line contains a bass line with a bass clef. A bracket labeled "Block B" spans across both staves. The notation is highly stylized and appears to be a sketch or a specific dialect of musical notation.

Sollagerwerk Solo

1 2 3 4

5 6 7 8

9 10 11 12

13 14 15 16

(grobtes mit ...)

17 18 19 20

Lento (breit)

FL.

3TR.

3POS.

Bass

Schlagw.

Handwritten musical score for the first system. It consists of a grand staff with five staves. The top two staves are for the piano (p) and forte (f) parts. The piano part has a melodic line with slurs and accents. The forte part has a rhythmic accompaniment. The score is divided into two measures by a vertical bar line.

gr. mit f din

Handwritten musical score for the second system. It consists of a grand staff with five staves. The top two staves are for the piano (p) and forte (f) parts. The piano part has a melodic line with slurs and accents. The forte part has a rhythmic accompaniment. The score is divided into two measures by a vertical bar line.

Flöte Solo (pung frei)

(mit Hall)

pp

fp

f

p

fp

f

p

p

f

p

f

p

pp

D.C.
Teil 2 of
CODA

CODA *rit* $\frac{2}{4}$ *lunga*

oder langsam

pp

pp

pp

4x