

Notenheft



SONATE (in Es) (Jazz)

für Flöte | Piano | Bass

Schlagwerk
(2 Sätze)

A. Scherbaum

(Wiederholungen
bitte genau
einhalten!)

Satz 1

ganz 4/4

Handwritten musical score for the first movement of a sonata. The score is written on five staves. The first staff is a treble clef with a key signature of one sharp (F#). The second staff is a treble clef with a key signature of one sharp (F#). The third staff is a treble clef with a key signature of one sharp (F#). The fourth staff is a bass clef with a key signature of one sharp (F#). The fifth staff is a bass clef with a key signature of one sharp (F#). The score includes various musical notations such as notes, rests, and dynamic markings like 'p' and 'pp'.

Handwritten musical score for the first system. The system includes a flute part (top staff) with rapid sixteenth-note runs and slurs, a piano accompaniment (middle staves) with chords and eighth notes, and a bass line (bottom staff) with sustained notes. The key signature is E major (three sharps). The system consists of four measures.

Handwritten musical score for the second system. The system continues the melodic and harmonic material from the first system. The flute part (top staff) has more complex rhythmic patterns, and the piano accompaniment (middle staves) features chords and moving lines. The system consists of four measures.

Handwritten musical score for the first system of 'Sonate in Es (Jazz)' by Adolf Scherbaum. The system includes four staves: Flute, Piano, Bass, and Drums. The music is in E major (one sharp) and 4/4 time. The first staff features a melodic line with slurs and accents. The second staff provides a rhythmic accompaniment. The third staff shows a bass line. The fourth staff contains a drum part with various notations, including 'f' and 'p' for dynamics. Handwritten notes like 'mf' and 'f' are present.

Handwritten musical score for the second system of 'Sonate in Es (Jazz)' by Adolf Scherbaum. The system includes four staves: Flute, Piano, Bass, and Drums. The music continues from the first system. The first staff features a melodic line with slurs and accents. The second staff provides a rhythmic accompaniment. The third staff shows a bass line. The fourth staff contains a drum part with various notations, including 'f' and 'p' for dynamics. Handwritten notes like 'mf' and 'f' are present. The system ends with a double bar line and the word 'CODA' written vertically.

Scherzo ff

Handwritten musical score for the first system. The notation includes various notes, rests, and accidentals, with a large blue slur spanning across the first two staves.

Handwritten musical score for the second system. The notation includes various notes, rests, and accidentals, with a large blue slur spanning across the first two staves.

(2. & 8 al & corn)

Handwritten musical score for the first system, featuring five staves. The notation includes various musical symbols such as notes, rests, and dynamic markings. The first staff has a treble clef and a key signature of one flat. The second staff has a bass clef. The third staff has a treble clef. The fourth staff has a bass clef. The fifth staff has a treble clef. The notation is in a jazz style, with many accidentals and dynamic markings like 'p' (piano) and '>' (accent). There are also some circled numbers and symbols.

♯CORN (gut + ohin)

Handwritten musical score for the second system, featuring five staves. The notation includes various musical symbols such as notes, rests, and dynamic markings. The first staff has a treble clef and a key signature of one flat. The second staff has a bass clef. The third staff has a treble clef. The fourth staff has a bass clef. The fifth staff has a treble clef. The notation is in a jazz style, with many accidentals and dynamic markings like 'p' (piano) and '>' (accent). There are also some circled numbers and symbols.

frei

Largo

Fine

pp

ppp

#

b

o

o

(2)

Sehr rasch

Handwritten musical notation for a piano piece. The notation is written on a grand staff (treble and bass clefs) and includes a piano (p) dynamic marking. The first staff shows a series of notes with a slur and a fermata. The second staff shows a series of notes with a slur and a fermata. The third staff shows a series of notes with a slur and a fermata. The fourth staff shows a series of notes with a slur and a fermata. The notation is written in blue ink on a yellowed page.

Handwritten musical score for the first system. The Flute part (top staff) has a treble clef and a key signature of one flat. The Piano part (bottom staff) has a grand staff with a key signature of one flat. The first system contains four measures. The Flute part has notes: G4, A4, Bb4, C5, D5, E5, F5, G5. The Piano part has notes: G3, A3, Bb3, C4, D4, E4, F4, G4. There are various accidentals and dynamics markings.

Handwritten musical score for the second system. The Flute part (top staff) has a treble clef and a key signature of one flat. The Piano part (bottom staff) has a grand staff with a key signature of one flat. The second system contains four measures. The Flute part has notes: G4, A4, Bb4, C5, D5, E5, F5, G5. The Piano part has notes: G3, A3, Bb3, C4, D4, E4, F4, G4. There are various accidentals and dynamics markings.

Handwritten musical score for the first system of 'Sonate in Es (Jazz)' by Adolf Scherbaum. The system includes a Flute part and a Piano part. The Flute part has a key signature of one sharp (F#) and a 4/4 time signature. The Piano part includes a bass line and a right-hand part with complex chords and accidentals. The system consists of four measures.

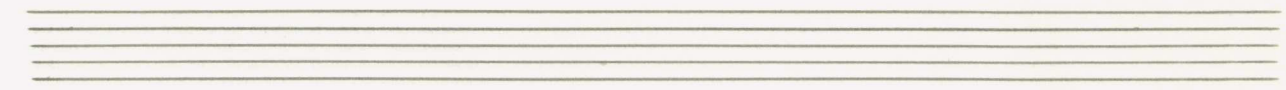
Handwritten musical score for the second system of 'Sonate in Es (Jazz)' by Adolf Scherbaum. The system continues the Flute and Piano parts from the first system. The system consists of four measures, ending with a double bar line.

Handwritten musical score for the first system. The notation includes notes, rests, and dynamic markings such as $f=$ and f .

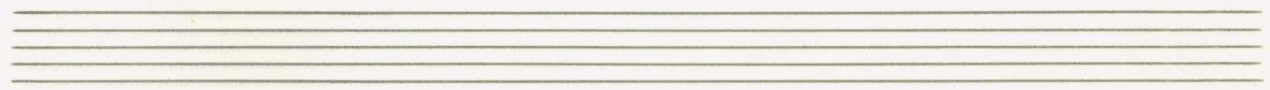
Handwritten musical score for the second system. The notation includes notes, rests, and dynamic markings such as $f=$ and f .

Handwritten musical score for the first system. The system consists of four staves. The top two staves are for the flute (treble and bass clef), and the bottom two are for the piano (treble and bass clef). The flute part has a melody with eighth and quarter notes, including a triplet. The piano part provides harmonic support with chords and some melodic lines. The system is divided into four measures by vertical bar lines.

Handwritten musical score for the second system. The system consists of four staves. The top two staves are for the flute (treble and bass clef), and the bottom two are for the piano (treble and bass clef). The flute part continues the melody with eighth and quarter notes. The piano part continues the harmonic support with chords and melodic lines. The system is divided into four measures by vertical bar lines.



Handwritten musical notation for the first system, featuring a treble clef and a key signature of one sharp (F#). The notation includes a melody line with notes and rests, and a bass line with notes and rests. A circled 'F#' is visible in the bass line.



Handwritten musical notation for the second system, featuring a treble clef and a key signature of one sharp (F#). The notation includes a melody line with notes and rests, and a bass line with notes and rests. A circled 'F#' is visible in the bass line.

Handwritten musical score for the first system. The notation includes a Flute part with a melodic line, a Piano part with a simple harmonic accompaniment, and Bass and Drums parts providing a steady rhythmic foundation. The key signature is E major, indicated by two sharps (F# and C#).

Handwritten musical score for the second system. The notation continues the piece, showing further development of the melodic and harmonic themes. The Flute part includes more complex rhythms and grace notes. The Piano part maintains its harmonic support. The Bass and Drums parts continue their rhythmic pattern, with some syncopation in the drum part.

Handwritten musical score for the first system, featuring Flute, Piano, Bass, and Drum parts. The Flute part has a melodic line with a trill and a sharp sign. The Piano part has a bass line with a sharp sign. The Bass part has a melodic line with a trill and a sharp sign. The Drum part has a rhythmic pattern with a trill and a sharp sign.

Handwritten musical score for the second system, featuring Flute, Piano, Bass, and Drum parts. The Flute part has a melodic line with a trill and a sharp sign. The Piano part has a bass line with a sharp sign. The Bass part has a melodic line with a trill and a sharp sign. The Drum part has a rhythmic pattern with a trill and a sharp sign.

Handwritten musical score for the third system, featuring Flute, Piano, Bass, and Drum parts. The Flute part has a melodic line with a trill and a sharp sign. The Piano part has a bass line with a sharp sign. The Bass part has a melodic line with a trill and a sharp sign. The Drum part has a rhythmic pattern with a trill and a sharp sign.

sempre cresc.

1.

dim.

p

2.

1. ohne Hüll
2. D.C. al Φ podA

f

(4x (modal))

CODA

Handwritten musical score for a jazz piece, featuring a 4x (modal) section. The score is written on ten staves, with the first four staves representing the first system and the next six staves representing the second system. The notation includes various musical symbols such as notes, rests, and accidentals, along with handwritten annotations like "CODA" and "Hp". The score is divided into measures by vertical bar lines, and the final measure of the second system is marked with a large bracket and the word "fine".