

L.v. BEETHOVEN



W.A. MOZART



NOTENHEFT

F. SCHUBERT



J. HAYDN



J. STRAUSS



Nr. 408

Fantasia für
große Orgel

Adolf Scherbaum

breit (pesante)

Handwritten musical notation for the first system. It features a grand staff with treble and bass clefs. The key signature is one sharp (F#) and the time signature is 3/4. A large slur covers the top staff, which contains a melodic line with notes and accidentals: F#4, G4, A4, Bb4, C5, D5, Eb5, F5, G5, Ab5, Bb5, C6, D6, Eb6, F6, G6, Ab6, Bb6, C7. The bottom staff has a bass line with three quarter notes: D4, D4, D4. Vertical lines connect the notes in the top staff to the notes in the bottom staff.

Handwritten musical notation for the second system. It features a grand staff with treble and bass clefs. The top staff contains a melodic line with notes and accidentals: F#4, G4, A4, Bb4, C5, D5, Eb5, F5, G5, Ab5, Bb5, C6, D6, Eb6, F6, G6, Ab6, Bb6, C7. The bottom staff has a bass line with three dotted half notes: D4, D4, D4. Vertical lines connect the notes in the top staff to the notes in the bottom staff.

Handwritten musical notation for the third system. It features a grand staff with treble and bass clefs. The top staff contains a melodic line with notes and accidentals: F#4, G4, A4, Bb4, C5, D5, Eb5, F5, G5, Ab5, Bb5, C6, D6, Eb6, F6, G6, Ab6, Bb6, C7. The bottom staff has a bass line with three dotted half notes: D4, D4, D4. Vertical lines connect the notes in the top staff to the notes in the bottom staff.

ohne Pedal

3
din >

(p)

$\frac{6}{8}$ Achtel

(p)

GES

pp

pp

d. d. d. d.

pp

d. d. d. d.

pp

grw3. rit

d. d. d. d.

frei enough

Handwritten musical score for the first system. It consists of three measures. The first measure has a treble clef with a sharp sign and a 3/4 time signature, and a bass clef with a sharp sign and a 4/4 time signature. The notes are: Treble (G4, A4, B4), Bass (F3, G3, A3). The second measure has a treble clef with a sharp sign and a 4/4 time signature, and a bass clef with a sharp sign and a 4/4 time signature. The notes are: Treble (A4, B4, C5), Bass (G3, A3, B3). The third measure has a treble clef with a sharp sign and a 4/4 time signature, and a bass clef with a sharp sign and a 4/4 time signature. The notes are: Treble (B4, C5, D5), Bass (A3, B3, C4). There are dynamic markings 'p' and 'p.' and various articulation marks like accents and slurs.

Handwritten musical score for the second system. It consists of three measures. The first measure has a treble clef with a sharp sign and a 4/4 time signature, and a bass clef with a sharp sign and a 4/4 time signature. The notes are: Treble (G4, A4, B4), Bass (F3, G3, A3). The second measure has a treble clef with a sharp sign and a 4/4 time signature, and a bass clef with a sharp sign and a 4/4 time signature. The notes are: Treble (A4, B4, C5), Bass (G3, A3, B3). The third measure has a treble clef with a sharp sign and a 4/4 time signature, and a bass clef with a sharp sign and a 4/4 time signature. The notes are: Treble (B4, C5, D5), Bass (A3, B3, C4). There is a dynamic marking 'p.' and various articulation marks like accents and slurs.

Handwritten musical score for the third system. It consists of three measures. The first measure has a treble clef with a sharp sign and a 4/4 time signature, and a bass clef with a sharp sign and a 4/4 time signature. The notes are: Treble (G4, A4, B4), Bass (F3, G3, A3). The second measure has a treble clef with a sharp sign and a 4/4 time signature, and a bass clef with a sharp sign and a 4/4 time signature. The notes are: Treble (A4, B4, C5), Bass (G3, A3, B3). The third measure has a treble clef with a sharp sign and a 4/4 time signature, and a bass clef with a sharp sign and a 4/4 time signature. The notes are: Treble (B4, C5, D5), Bass (A3, B3, C4). There is a dynamic marking 'p.' and various articulation marks like accents and slurs.

Allegro (arco).

noch steigern →

Handwritten musical score for the first system. It consists of three staves. The top two staves are treble clefs, and the bottom staff is a bass clef. The music is in 2/4 time. The first measure shows a complex chordal texture in the upper staves and a bass line with notes G, B, and D. The second measure continues with similar textures. The third measure features a change in the upper staves, with a new chord structure. The fourth measure shows a melodic line in the bass staff with notes G, B, and D, and a final chord in the upper staves.

Handwritten musical score for the second system. It consists of three staves. The top two staves are treble clefs, and the bottom staff is a bass clef. The music is in 2/4 time. The first measure shows a complex chordal texture in the upper staves and a bass line with notes G, B, and D. The second measure continues with similar textures. The third measure features a change in the upper staves, with a new chord structure. The fourth measure shows a melodic line in the bass staff with notes G, B, and D, and a final chord in the upper staves.

Handwritten musical score for the third system. It consists of three staves. The top two staves are treble clefs, and the bottom staff is a bass clef. The music is in 2/4 time. The first measure shows a complex chordal texture in the upper staves and a bass line with notes G, B, and D. The second measure continues with similar textures. The third measure features a change in the upper staves, with a new chord structure. The fourth measure shows a melodic line in the bass staff with notes G, B, and D, and a final chord in the upper staves.

sehr ruhig

pp 3/4

b. d.

b. d.

b. d.

Handwritten musical notation for the first system, consisting of two staves. The upper staff contains a melodic line with notes and accidentals (sharps, flats, naturals) and a slur. The lower staff contains a bass line with notes and accidentals. A handwritten note "auf 8" is written above the first measure of the lower staff.

Handwritten musical notation for the second system, consisting of two staves. The upper staff contains a melodic line with notes and accidentals and a slur. The lower staff contains a bass line with notes and accidentals.

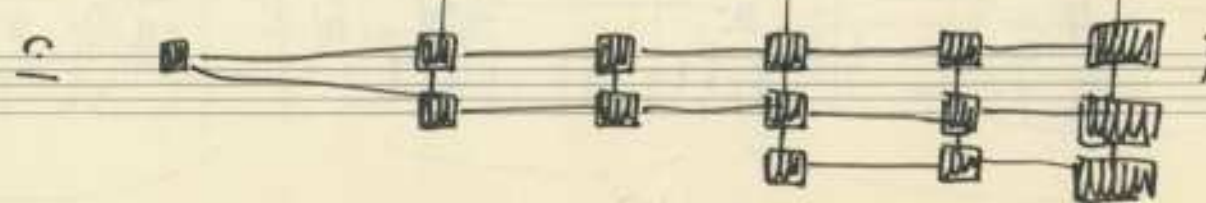
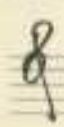
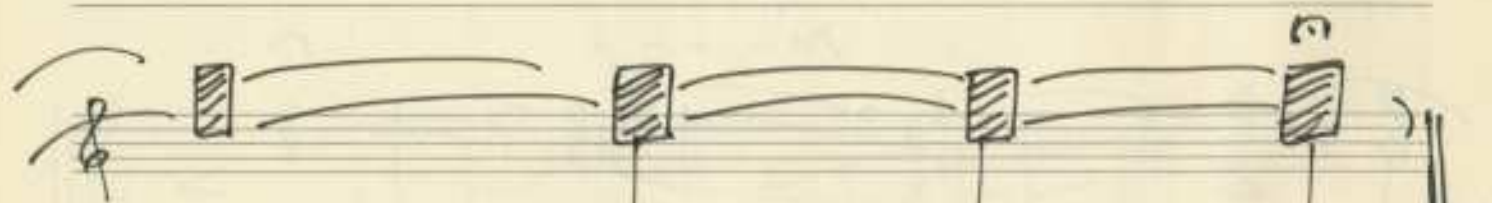
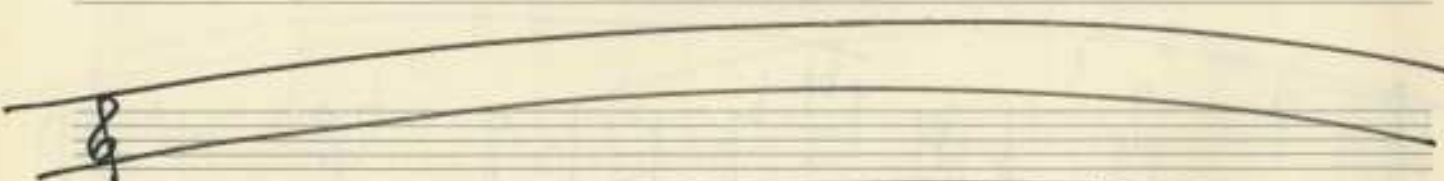
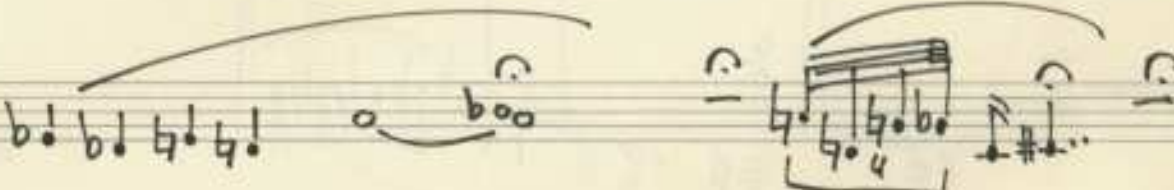
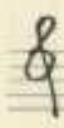
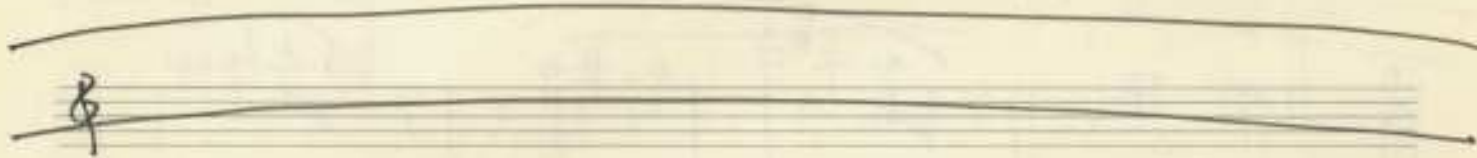
Handwritten musical notation for the third system, consisting of two staves. The upper staff contains a melodic line with notes and accidentals and a slur. The lower staff contains a bass line with notes and accidentals.

Handwritten musical notation for the fourth system, consisting of two staves. The upper staff contains a melodic line with notes and accidentals and a slur. The lower staff contains a bass line with notes and accidentals. The word "rit..." is written above the first measure of the upper staff.

ganz frei

Chorton

pppp



G.P.

subito breit (pesante)

Handwritten musical score for the first system. The treble clef staff is marked *mp* and *3*. The bass clef staff is marked *4*. The music consists of several measures with notes and rests, including a quarter rest in the first measure of the bass staff.

Handwritten musical score for the second system, continuing the piece with treble and bass staves.

Handwritten musical score for the third system, continuing the piece with treble and bass staves.

Handwritten musical score for the fourth system, continuing the piece with treble and bass staves.

Handwritten musical score for the first system. It consists of a treble clef staff and a bass clef staff. The treble staff contains four measures of music with notes and accidentals (sharps and flats) and dynamic markings like mf and accents. The bass staff contains corresponding chords. Below the bass staff, there are four measures of a single note 'd' with a fermata, each bracketed under a measure line.

Handwritten musical score for the second system. It consists of a treble clef staff and a bass clef staff. The treble staff contains four measures of music with notes and accidentals (sharps and flats) and dynamic markings like mf and accents. The bass staff contains corresponding chords. Below the bass staff, there are four measures of a single note 'd' with a fermata, each bracketed under a measure line.

Handwritten musical score for the third system. It consists of a treble clef staff and a bass clef staff. The treble staff contains three measures of music with a melodic line of eighth notes and accidentals (sharps and flats) and dynamic markings like mf and accents. The bass staff contains corresponding chords. Below the bass staff, there are three measures of a single note 'd' with a fermata, each bracketed under a measure line.

Handwritten musical score for the first system. It consists of three staves: treble clef (top), alto clef (middle), and bass clef (bottom). The music includes various notes, rests, and dynamic markings. A large slur covers the first two staves. The bass staff has the text "großer rit - - - -" written below it.

Handwritten musical score for the second system. It consists of three staves: treble clef (top), alto clef (middle), and bass clef (bottom). The music includes various notes, rests, and dynamic markings. A large slur covers the first two staves.

Handwritten musical score for the third system. It consists of three staves: treble clef (top), alto clef (middle), and bass clef (bottom). The music includes various notes, rests, and dynamic markings. A large slur covers the first two staves. The word "Lunga" is written below the middle staff. A circled "FIN" is written above the middle staff. The signature "Adolf Scherbaum" is written below the middle staff.