

L.v. BEETHOVEN



W.A. MOZART



NOTENHEFT

F. SCHUBERT



J. HAYDN



J. STRAUSS



Nr. 408

Fantasie für
große Orgel

Adolf Scherbaum

breit (pesante)

Handwritten musical notation for the first system, featuring a treble and bass clef with a 3/4 time signature and a key signature of one sharp (F#). The melody is written in the treble clef, and the bass clef contains a single note 'q.' with a slur underneath. The melody consists of three measures: the first measure has notes G4, A4, Bb4, C5, D5, E5; the second measure has notes F#5, G5, Ab5, Bb5, C6, D6; the third measure has notes E6, F#6, G6, Ab6, Bb6, C7. A large slur covers the entire system.

Handwritten musical notation for the second system, featuring a treble and bass clef. The melody is written in the treble clef, and the bass clef contains a single note 'd.' with a slur underneath. The melody consists of three measures: the first measure has notes F#4, G4, Ab4, Bb4, C5, D5; the second measure has notes E5, F#5, G5, Ab5, Bb5, C6; the third measure has notes D6, E6, F#6, G6, Ab6, Bb6. A large slur covers the entire system.

Handwritten musical notation for the third system, featuring a treble and bass clef. The melody is written in the treble clef, and the bass clef contains a single note 'd.' with a slur underneath. The melody consists of three measures: the first measure has notes G4, Ab4, Bb4, C5, D5, E5; the second measure has notes F#5, G5, Ab5, Bb5, C6, D6; the third measure has notes E6, F#6, G6, Ab6, Bb6, C7. A large slur covers the entire system.

Handwritten musical notation for the first system. The top staff (treble clef) contains a melodic line with notes G4, A4, Bb4, C5, Bb4, A4, G4 in the first measure, and G4, A4, Bb4, C5, Bb4, A4, G4 in the second measure. The bottom staff (bass clef) contains a bass line with notes D4, D4, D4, D4, D4, D4, D4. There are rests and dynamics markings throughout.

Handwritten musical notation for the second system. The top staff (treble clef) contains notes G4, A4, Bb4, C5, Bb4, A4, G4 in the first measure, and G4, A4, Bb4, C5, Bb4, A4, G4 in the second measure. The bottom staff (bass clef) contains notes D4, D4, D4, D4, D4, D4, D4. There are rests and dynamics markings throughout.

Handwritten musical notation for the third system. The top staff (treble clef) contains notes G4, A4, Bb4, C5, Bb4, A4, G4 in the first measure, and G4, A4, Bb4, C5, Bb4, A4, G4 in the second measure. The bottom staff (bass clef) contains notes D4, D4, D4, D4, D4, D4, D4. There are rests and dynamics markings throughout.

Handwritten musical notation for the fourth system. The top staff (treble clef) contains notes G4, A4, Bb4, C5, Bb4, A4, G4 in the first measure, and G4, A4, Bb4, C5, Bb4, A4, G4 in the second measure. The bottom staff (bass clef) contains notes D4, D4, D4, D4, D4, D4, D4. There are rests and dynamics markings throughout.

sehr ruhig

din >

(P)

(P)

(P)

(6/8) Achtel

GES

pp
pp
d. d. d. d.

d. d. d. d.

grw3. rit
d. d. d. d.

frei enough

Handwritten musical score for the first system. It consists of three measures. The first measure has a treble staff with notes G4, A4, B4, C5 and a bass staff with notes F3, G3, A3. The second measure has a treble staff with notes G4, A4, B4, C5 and a bass staff with notes F3, G3, A3. The third measure has a treble staff with notes G4, A4, B4, C5 and a bass staff with notes F3, G3, A3. There are dynamic markings like mf and f and accents. A Dc marking is present above the second measure.

Handwritten musical score for the second system. It consists of three measures. The first measure has a treble staff with notes G4, A4, B4, C5 and a bass staff with notes F3, G3, A3. The second measure has a treble staff with notes G4, A4, B4, C5 and a bass staff with notes F3, G3, A3. The third measure has a treble staff with notes G4, A4, B4, C5 and a bass staff with notes F3, G3, A3. There are dynamic markings like mf and f and accents. A steigend marking with an arrow is present above the first measure.

Handwritten musical score for the third system. It consists of three measures. The first measure has a treble staff with notes G4, A4, B4, C5 and a bass staff with notes F3, G3, A3. The second measure has a treble staff with notes G4, A4, B4, C5 and a bass staff with notes F3, G3, A3. The third measure has a treble staff with notes G4, A4, B4, C5 and a bass staff with notes F3, G3, A3. There are dynamic markings like mf and f and accents. An arrow points to the start of the third measure.

Allegro (cresc.).

noch steigern →

sehr langsam (breit)

The first system of the handwritten musical score consists of three staves. The top two staves are treble clefs, and the bottom staff is a bass clef. The music is written in a style that suggests a slow, broad tempo. The top two staves contain dense, vertical chordal textures with various accidentals, including flats and naturals. The bottom staff features a bass line with long, horizontal notes, some of which are beamed together. The overall impression is one of a slow, meditative piece.

The second system of the handwritten musical score continues the composition. It features three staves, similar to the first system. The top two staves are treble clefs, and the bottom staff is a bass clef. The music maintains the slow, broad tempo. The top two staves contain dense, vertical chordal textures with various accidentals, including flats and naturals. The bottom staff features a bass line with long, horizontal notes, some of which are beamed together. The overall impression is one of a slow, meditative piece.

The third system of the handwritten musical score continues the composition. It features three staves, similar to the first system. The top two staves are treble clefs, and the bottom staff is a bass clef. The music maintains the slow, broad tempo. The top two staves contain dense, vertical chordal textures with various accidentals, including flats and naturals. The bottom staff features a bass line with long, horizontal notes, some of which are beamed together. The overall impression is one of a slow, meditative piece.

Handwritten musical score for the first system. It consists of three staves. The top two staves are in treble clef, and the bottom staff is in bass clef. The music is written in a complex, dense style with many accidentals and ties. The first measure shows a complex chord structure. The second measure has a melodic line in the bass staff with accents (^) and a fermata. The third measure continues the complex texture. The fourth measure shows a melodic line in the bass staff with a fermata and a slur.

Handwritten musical score for the second system. It consists of three staves. The top two staves are in treble clef, and the bottom staff is in bass clef. The music continues with complex textures. The first measure has a complex chord structure. The second measure has a melodic line in the bass staff with a slur and a fermata. The third measure continues the complex texture. The fourth measure shows a melodic line in the bass staff with a slur and a fermata.

Handwritten musical score for the third system. It consists of three staves. The top two staves are in treble clef, and the bottom staff is in bass clef. The music is mostly rests in the upper staves. The bottom staff has a melodic line with a slur and a fermata. There is a marking "dim + rit" with a dashed line leading to a fermata. There is also a circled "p" and "pp" markings. The first measure has a complex chord structure. The second measure has a melodic line in the bass staff with a slur and a fermata. The third measure continues the complex texture. The fourth measure shows a melodic line in the bass staff with a slur and a fermata.

sehr ruhig

Handwritten musical notation for the first system. The top staff is in treble clef with a 3/4 time signature and a dynamic marking of *pp*. The bottom staff is in bass clef. The music consists of three measures. The first measure has a treble clef note (G4) and a bass clef note (C3). The second measure has treble clef notes (A4, B4) and a bass clef note (C3). The third measure has treble clef notes (B4, A4) and a bass clef note (C3). There are various accidentals and slurs throughout.

Handwritten musical notation for the second system. The top staff is in treble clef and the bottom staff is in bass clef. The music consists of three measures. The first measure has treble clef notes (G4, A4) and a bass clef note (C3). The second measure has treble clef notes (B4, A4) and a bass clef note (C3). The third measure has treble clef notes (B4, A4) and a bass clef note (C3). There are various accidentals and slurs throughout.

Handwritten musical notation for the third system. The top staff is in treble clef and the bottom staff is in bass clef. The music consists of three measures. The first measure has treble clef notes (G4, A4) and a bass clef note (C3). The second measure has treble clef notes (B4, A4) and a bass clef note (C3). The third measure has treble clef notes (B4, A4) and a bass clef note (C3). There are various accidentals and slurs throughout.

Handwritten musical notation for the fourth system. The top staff is in treble clef and the bottom staff is in bass clef. The music consists of four measures. The first measure has treble clef notes (G4, A4) and a bass clef note (C3). The second measure has treble clef notes (B4, A4) and a bass clef note (C3). The third measure has treble clef notes (B4, A4) and a bass clef note (C3). The fourth measure has treble clef notes (B4, A4) and a bass clef note (C3). There are various accidentals and slurs throughout.

Handwritten musical notation for the first system. The top staff is in treble clef and contains notes with various accidentals (sharps, flats, naturals) and a slur. The bottom staff is in bass clef and contains chordal figures. A handwritten annotation "auf 8" with a musical note and an exclamation mark is present between the staves.

Handwritten musical notation for the second system. The top staff is in treble clef with a melodic line and a slur. The bottom staff is in bass clef with chordal accompaniment. The notation includes various accidentals and rhythmic markings.

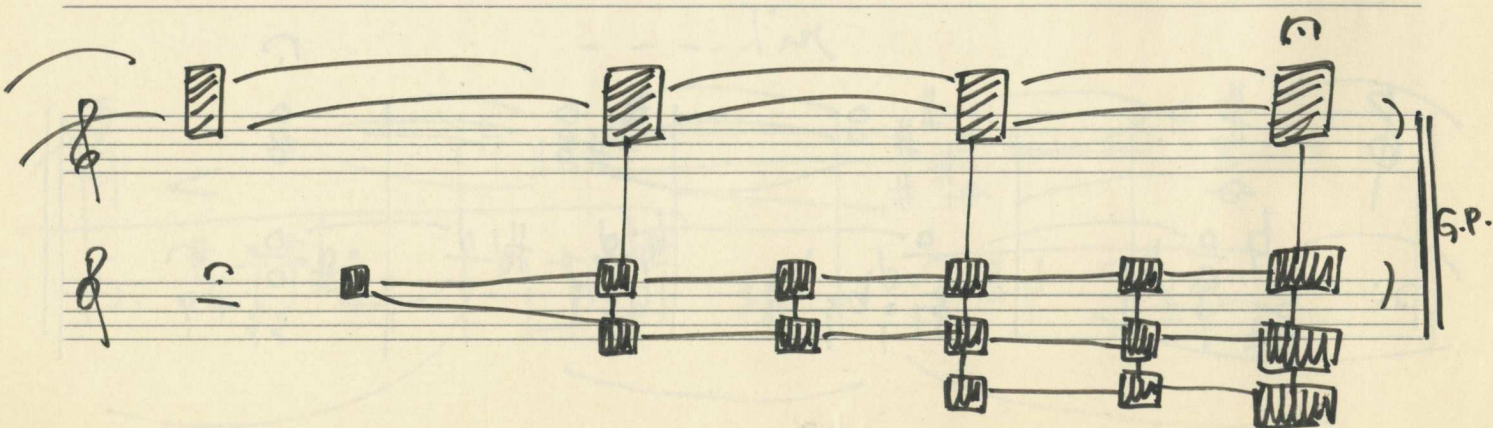
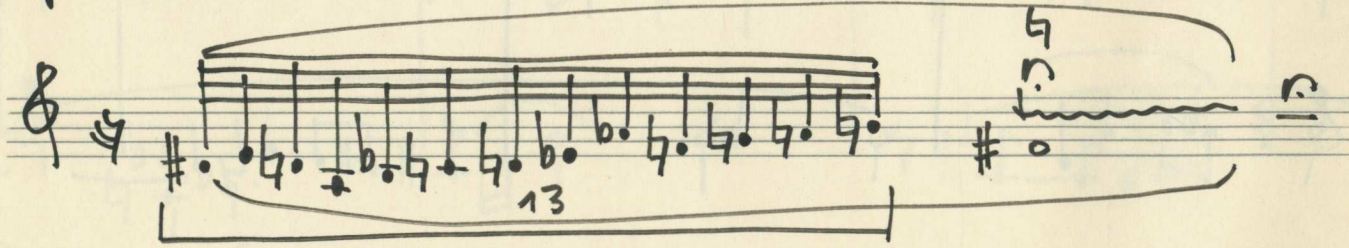
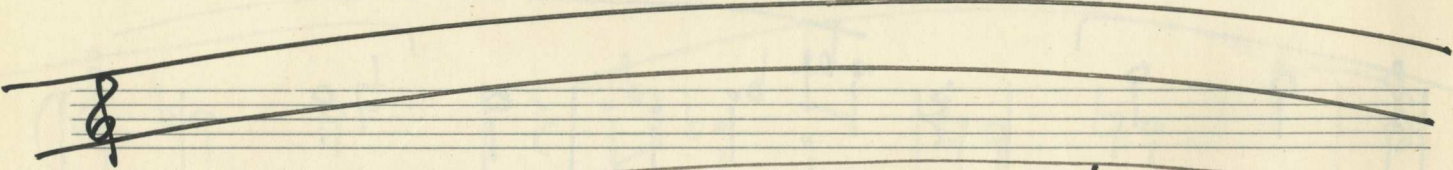
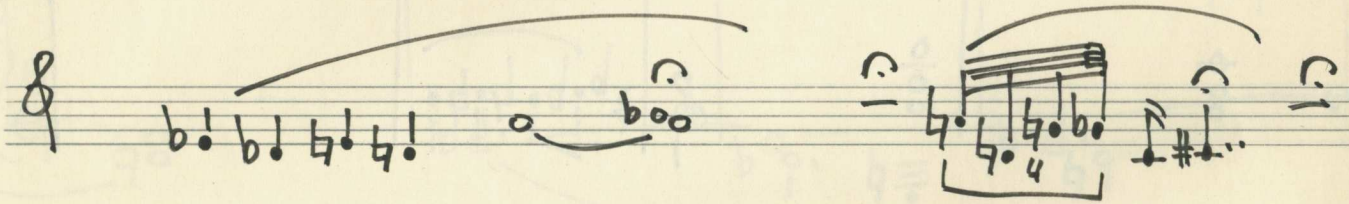
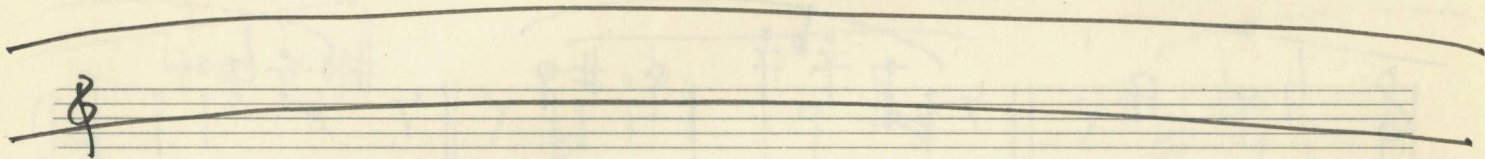
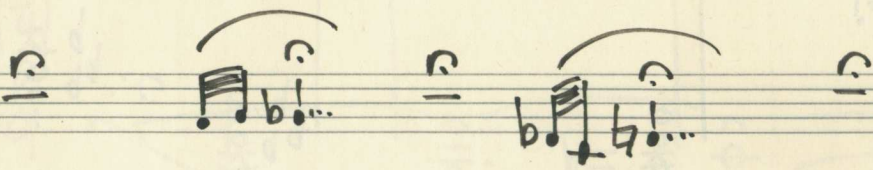
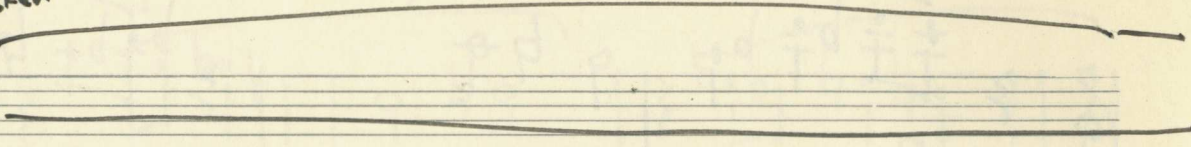
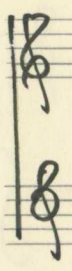
Handwritten musical notation for the third system. The top staff is in treble clef with a melodic line and a slur. The bottom staff is in bass clef with a more active melodic line. The notation includes various accidentals and rhythmic markings.

Handwritten musical notation for the fourth system. The top staff is in treble clef and includes a "rit." (ritardando) marking. The bottom staff is in bass clef and features complex chordal structures. The notation includes various accidentals and slurs.

ganz frei

cluster

pppp



G.P.

subito breit (pesante)

Org 3
3
4

Handwritten musical notation for the first system. The treble clef part contains a series of notes with accidentals: Bb, Bb, Gb, Ab, Ab, Gb, Gb, Fb, Fb, Eb, Eb, D#, D#. The bass clef part contains notes with accidentals: Ab, Ab, Gb, Gb, Fb, Fb, Eb, Eb, D#.

Handwritten musical notation for the second system. The treble clef part contains notes with accidentals: D#, Gb, Ab, Ab, Gb, Gb, Fb, Fb, Eb, Eb, D#, Gb, Ab, Ab, Gb, Gb, Fb, Fb, Eb, Eb, D#. The bass clef part contains notes with accidentals: D#, Gb, Ab, Ab, Gb, Gb, Fb, Fb, Eb, Eb, D#.

Handwritten musical notation for the third system. The treble clef part contains notes with accidentals: Gb, Ab, Ab, Gb, Gb, Fb, Fb, Eb, Eb, D#, D#, Gb, Gb, Fb, Fb, Eb, Eb, D#. The bass clef part contains notes with accidentals: Gb, Ab, Ab, Gb, Gb, Fb, Fb, Eb, Eb, D#.

Handwritten musical notation for the fourth system. The treble clef part contains notes with accidentals: Bb, Ab, Ab, Gb, Gb, Fb, Fb, Eb, Eb, D#, Gb, Gb, Fb, Fb, Eb, Eb, D#. The bass clef part contains notes with accidentals: Bb, Ab, Ab, Gb, Gb, Fb, Fb, Eb, Eb, D#.

Handwritten musical score for the first system. It features a treble clef and two bass clefs. The music consists of four measures of chords with accents and a dotted bass line.

Handwritten musical score for the second system. It features a treble clef and two bass clefs. The music consists of four measures of chords with various accidentals and a dotted bass line.

Handwritten musical score for the third system. It features a treble clef and two bass clefs. The music consists of three measures of eighth-note patterns with a dotted bass line.

Handwritten musical score for the first system, featuring treble, alto, and bass staves. The music includes notes, rests, and a fermata. The bass staff contains the handwritten text "großes mit - - - - -".

Handwritten musical score for the second system, featuring treble, alto, and bass staves. The music includes notes and rests.

Handwritten musical score for the third system, featuring treble, alto, and bass staves. The music includes notes and rests. The system concludes with a circled "FIN" and a signature that reads "Adolf Scherbaum".