

L.v. BEETHOVEN



W.A. MOZART



NOTENHEFT

F. SCHUBERT



J. HAYDN



J. STRAUSS



FORNAT

KINDERALBUM

1

MAMA - ICH möchte mit dem

Fritzgerl spielen -

Gib a Ruh - dummer Bub -

MAMA - ich möchte aber doch mit
dem Fritzgerl spielen -

Still bist — der SARG bleibst du
 weit

(cette + sur)

Handwritten musical notation for the first system. The treble clef staff contains notes with fingerings: $b d.$ (finger 2), b (finger 2), g (finger 2), e (finger 2), e (finger 2), e (finger 2). The bass clef staff contains a chord with a flat sign (b) and a circled o . The system concludes with a double bar line and a circled \oplus symbol.

Handwritten musical notation for the second system. The treble clef staff shows notes with fingerings: e (finger 1), e (finger 3), e (finger 3). The bass clef staff shows notes with fingerings: e (finger 1), e (finger 3), e (finger 3). The system concludes with a double bar line and a circled \oplus symbol.

Handwritten musical notation for the third system. The treble clef staff shows notes with fingerings: $b b$ (finger 1), e (finger 3), e (finger 3). The bass clef staff shows notes with fingerings: e (finger 1), e (finger 3), e (finger 3). The system concludes with a double bar line and the text "D.C." and "e".

Handwritten musical notation for the fourth system. The treble clef staff shows notes with fingerings: e (finger 1), e (finger 3), e (finger 3). The bass clef staff shows notes with fingerings: e (finger 1), e (finger 3), e (finger 3). The system concludes with a double bar line and the text "Fine".

MAMA — ICH mag das Iyankali nicht,

Gib a Rub, dummer Bub.

MAMA, es ist so bitter —

STILL bist —————>

Handwritten musical notation for the first system, consisting of two staves. The top staff is in treble clef and the bottom in bass clef. The music features various notes, rests, and accidentals, including a sharp sign and a flat sign.

Handwritten musical notation for the second system, consisting of two staves. The notation continues with notes, rests, and accidentals, including a sharp sign and a flat sign.

lento

pp

Dir. al

Handwritten musical notation for the third system, starting with the tempo marking "lento". It consists of two staves with notes and rests.

Presto

pp

pp

FINE

Handwritten musical notation for the fourth system, starting with the tempo marking "Presto". It includes a large upward-pointing slur and ends with the word "FINE".

MAMA — WARUM zündest du denn
schon den Christbaum an ... is
doch erst Ostern?

git a Ruhe — dummer Quab —

— Zu Ostern hat doch niemand
einen Christbaum —

Still bist —————>

— weißt eh — daß d' Leukämie hart!

3

Leute

Handwritten musical notation for the first system. It consists of a treble clef staff and a bass clef staff. The time signature is 3/4. The treble staff begins with a circled 'P' and contains notes G4, A4, B4, and C5, with a slur over the last two. The bass staff contains notes G3, F3, and E3. A large slur covers the final two measures, with an accent mark above the first measure of the slur.

Handwritten musical notation for the second system. It consists of a treble clef staff and a bass clef staff. The time signature is 3/4. The treble staff begins with a circled 'P' and contains notes G4, A4, B4, and C5, with a slur over the last two. The bass staff contains notes G3, F3, and E3. A large slur covers the final two measures, with an accent mark above the first measure of the slur.

Handwritten musical notation for the third system. It consists of a treble clef staff and a bass clef staff. The time signature is 3/4. The treble staff begins with a circled 'P' and contains notes G4, A4, B4, and C5, with a slur over the last two. The bass staff contains notes G3, F3, and E3. A large slur covers the final two measures, with an accent mark above the first measure of the slur.

breit

pp

p

P

pp

frei

pp

D.C. al fine

rit.

pp

FINE

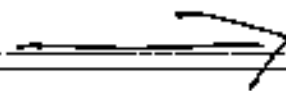
MAMA — Muss ich noch

lange im Kreis gehen?

Gib a Ruh — dummer Bub —

MAMA —

Still bist



— sonst wird der andere Fuß auch
noch festgewagelt!

4

(4+)

sehr rasch (hart)

Handwritten musical notation for the first system. It consists of two staves: a treble clef staff and a bass clef staff. The time signature is 2/4. The notation includes various rhythmic values, including eighth and sixteenth notes, and rests. There are several accents (^) placed above notes. The first two measures show a simple rhythmic pattern, while the last three measures feature more complex rhythmic figures with multiple accents.

Handwritten musical notation for the second system. It continues with two staves (treble and bass clef). The notation is similar to the first system, with rhythmic patterns and accents. The first measure has a double accent (^ ^) over two notes. The second and third measures have single accents. The fourth measure has four accents (^ ^ ^ ^) over a group of notes. The fifth measure has a single accent.

Handwritten musical notation for the third system. It continues with two staves (treble and bass clef). The notation includes more complex rhythmic structures, such as beamed eighth notes and sixteenth notes. There are several accents (^) placed above notes. The first two measures have double accents (^ ^) over groups of notes. The third measure has a single accent. The fourth measure has two accents.

(4x)

Handwritten musical notation for the first system. The treble staff contains a sequence of notes with accents (^) above them. The bass staff contains notes with slurs and accents (^) above them. The system concludes with a double bar line.

rach accel.

Handwritten musical notation for the second system. The treble staff features a series of notes with a fermata over the final one. The bass staff contains notes with slurs and accents (^) above them.

Handwritten musical notation for the third system. The treble staff has a long, sweeping slur over several notes. The bass staff contains notes with slurs and accents (^) above them. The system ends with a 'FINE' marking in the treble staff.

Handwritten musical notation for the fourth system. The treble staff has a few notes with accents (^) above them. The bass staff contains notes with slurs and accents (^) above them, ending with a sharp sign (#). A 'FINE' sign is placed at the end of the system.

KINDERALBUM

2

MAMA - ICH mag die Tante

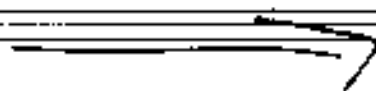
Luzy nicht -

Gib a Ruh - dummer Bub -

MAMA - ich mag die Tante

Luzy nicht -

still bist



gegessen wird, was auf der

5

brat

3/4

Handwritten musical notation for the first system. The treble clef staff contains a melodic line with slurs and accents. The bass clef staff contains chords with various accidentals (sharps, flats, naturals) and slurs. The system concludes with a double bar line.

(Paci)

Handwritten musical notation for the second system, starting with a 4/4 time signature. The treble clef staff contains a melodic line with slurs and accents. The bass clef staff contains chords with various accidentals and slurs. The system concludes with a double bar line.

Handwritten musical notation for the third system. The treble clef staff contains a melodic line with slurs and accents. The bass clef staff contains chords with various accidentals and slurs. The system concludes with a double bar line.

rit...

Handwritten musical notation for the fourth system. The treble clef staff contains a melodic line with slurs and accents. The bass clef staff contains chords with various accidentals and slurs. The system concludes with a double bar line.

- schau, wie der Fritzerl brav
untergeht.

6

Presto (ohne Unterbrechung (4 bis 6+)

Presto

Handwritten musical notation for the first system of exercise 6. It features a treble and bass clef with a 2/4 time signature. The right hand has a circled 'P' and an arrow pointing to the first measure. The left hand has a circled '4' and an arrow pointing to the first measure. The notation includes notes with accidentals and rests.

Handwritten musical notation for the second system of exercise 6. It continues the piece with treble and bass clefs and a 2/4 time signature. The right hand has a circled 'P' and an arrow pointing to the first measure. The left hand has a circled '4' and an arrow pointing to the first measure. The notation includes notes with accidentals and rests.

Handwritten musical notation for the third system of exercise 6. It continues the piece with treble and bass clefs and a 2/4 time signature. The right hand has a circled 'P' and an arrow pointing to the first measure. The left hand has a circled '4' and an arrow pointing to the first measure. The notation includes notes with accidentals and rests.

Handwritten musical notation for the first system. The treble clef staff contains notes with accents (^) and slurs. The bass clef staff contains notes with a sharp sign (#) and a flat sign (b). The system concludes with a double bar line.

Handwritten musical notation for the second system. The treble clef staff features notes with accents (^) and a sharp sign (#). The bass clef staff contains notes with a flat sign (b). The system concludes with a double bar line.

Handwritten musical notation for the third system. The treble clef staff has notes with accents (^) and slurs. The bass clef staff contains notes with a sharp sign (#) and the word "dim" written below. The system concludes with a double bar line.

Handwritten musical notation for the fourth system. The treble clef staff has notes with accents (^) and a circled sharp sign (#). The bass clef staff contains notes with a sharp sign (#) and the word "Guss" written above. The system concludes with a double bar line and the word "FINE" in a box.

MAMA - ich bin schon wieder
da -

Gib a Ruhe - demmer Zeit -

MAMA - ich bin schon wieder da -
wo warst denn?

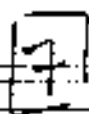
MAMA, ich war auf der
psychiatrischen
Universitätsklinik -

und was hast, Fritzerl?

MAMA, ich hab au⁴ Odi-pus-Komplex -

Still bist \longrightarrow

- Hauptsach - du hast deine
Mutterl recht gern !



Tempo Valse

Handwritten musical notation for the first system. The treble clef staff contains a melodic line with notes marked with sharps and flats, and slurs. The bass clef staff contains a bass line with notes and accidentals, including a dynamic marking of mp .

Handwritten musical notation for the second system. The treble clef staff continues the melodic line with slurs and accents. The bass clef staff continues the bass line with notes and slurs.

Handwritten musical notation for the third system. The treble clef staff contains the lyrics "du" and "(poco a bit)". The notes are mostly quarter notes with slurs. The bass clef staff contains a bass line with notes and slurs.

Handwritten musical notation for the fourth system. The treble clef staff ends with a melodic phrase marked pp . The bass clef staff ends with a final chord marked ppp and a sharp sign. A sign that says "FINE" is attached to the end of the treble staff.

MAMA - in der Küche stinkts so -

Gib a Ruh - dümmes Put -

Mama - in der Küche stinkts a so -

was hast denn getan -

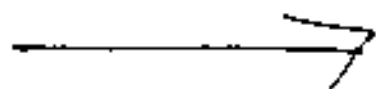
MAMA - ich hab die Großmütli
eingehetzt -

UM Gotteswillen -

ich hab dir doch gesagt -

daß man nicht alles mögliche

in den Ofen hinstopfen darf -



→ | Daum ist es kein Wunder, -
weil er in einemfort ausgeht...!

8

Prestissimo

(4x)

Handwritten musical score for the first system. It consists of two staves: a treble clef staff and a bass clef staff. The time signature is 2/4. The key signature has one sharp (F#). The first measure of the treble staff contains a circled 'pp' with an arrow pointing to the first note. The bass staff has a series of chords. The system ends with a double bar line and a 'f' dynamic marking.

Handwritten musical score for the second system. It consists of two staves. The treble staff has a series of notes with accents (^) above them. The bass staff has a series of chords with accents (^) above them. The system ends with a double bar line.

Handwritten musical score for the third system. It consists of two staves. The treble staff has notes with accents (^) above them. The bass staff has chords with accents (^) above them. The system ends with a double bar line and a key signature change to one flat (Bb).

MAMA - ich muß auf die
große Seite -

Still bist -

MAMA - ich muß aber auf
die große Seite -

STill bist →

- schauk, wie

9

brav der Frauzerl in
die Hoseu macht

Allegretto (Allegro con brio) ad lib.

Handwritten musical notation for the first system, measures 1-3. The top staff is in treble clef with a 6/8 time signature. The bottom staff is in bass clef. The music features eighth and sixteenth notes with various accidentals (sharps, flats, naturals) and slurs. A circled '9' is written in the left margin of the first measure.

Handwritten musical notation for the second system, measures 4-6. The top staff continues the melodic line with slurs and accents. The bottom staff provides harmonic support with chords and moving lines. A circled '9' is written in the left margin of the fourth measure.

Handwritten musical notation for the third system, measures 7-9. The top staff shows melodic phrases with slurs. The bottom staff contains chords and rhythmic patterns. A circled '9' is written in the left margin of the seventh measure.

Handwritten musical notation for the fourth system, measures 10-12. The top staff continues the melodic development. The bottom staff features more complex chordal textures. A circled '9' is written in the left margin of the tenth measure.

3+ (rit)

Handwritten musical score for the first system. The treble clef part begins with a half note G4 (flat), followed by quarter notes A4 (flat), B4 (flat), and C5. The bass clef part has a half note G3 (flat), followed by quarter notes A3 (flat), B3 (flat), and C4. The second measure has a circled 'P' above the treble staff and a quarter note G4 (flat) in the bass. The third measure has a circled 'P' above the treble staff and a quarter note G4 (flat) in the bass. The fourth measure has a circled 'P' above the treble staff and a quarter note G4 (flat) in the bass. The system ends with a double bar line and the word 'FINE'.

Handwritten musical score for the second system. The treble clef part has a melodic line starting with a half note G4 (flat), followed by quarter notes A4 (flat), B4 (flat), and C5. The bass clef part has a half note G3 (flat), followed by quarter notes A3 (flat), B3 (flat), and C4. The system ends with a double bar line.

Handwritten musical score for the third system. The treble clef part has a melodic line starting with a half note G4 (flat), followed by quarter notes A4 (flat), B4 (flat), and C5. The bass clef part has a half note G3 (flat), followed by quarter notes A3 (flat), B3 (flat), and C4. The system ends with a double bar line and the word 'FINE'.

10

resistito
l'fai

pp
ppp
Pedal - x

Lento

pp

pp
ppp
FINE

(Prestissimo)

Handwritten musical notation for the first system. The treble clef part features a series of sixteenth-note chords, some with accents (^) and slurs. The bass clef part has a steady eighth-note accompaniment. A dynamic marking *ff* is present in the bass clef. The system concludes with a double bar line.

Handwritten musical notation for the second system. The treble clef part continues with complex rhythmic patterns and accents. The bass clef part maintains the eighth-note accompaniment. The system ends with a double bar line.

Handwritten musical notation for the third system. The treble clef part features a final flourish with slurs and accents. The bass clef part concludes with a final chord. The system ends with a double bar line and a fermata over the final note.

Di. Fine

MAMA, ich mag keine
Äpfel essen —

Gib er Ruhe, dummes Quack —

MAMA — ich mag aber keine
Äpfel essen —

Still bist, —>

— dann ist halt nur die Würmer —

11

sehr rasch

Handwritten musical notation for the first system, measures 1-4. The piece is in 2/4 time. The first measure is a whole rest. The second measure is a whole rest. The third measure begins with a piano (*pp*) dynamic and contains a quarter note G4 with an accent (^), followed by a quarter note F4 with an accent (^). The fourth measure contains a quarter note E4 with an accent (^), followed by a quarter note D4 with an accent (^).

Handwritten musical notation for the second system, measures 5-8. The fifth measure contains a quarter note Bb4 with an accent (^), followed by a quarter note A4 with an accent (^). The sixth measure contains a quarter note G4 with an accent (^), followed by a quarter note F4 with an accent (^). The seventh measure contains a quarter note E4 with an accent (^), followed by a quarter note D4 with an accent (^). The eighth measure contains a quarter note C4 with an accent (^), followed by a quarter note Bb3 with an accent (^).

Handwritten musical notation for the third system, measures 9-12. The ninth measure contains a quarter note Bb4 with an accent (^), followed by a quarter note A4 with an accent (^). The tenth measure contains a quarter note G4 with an accent (^), followed by a quarter note F4 with an accent (^). The eleventh measure contains a quarter note E4 with an accent (^), followed by a quarter note D4 with an accent (^). The twelfth measure contains a quarter note C4 with an accent (^), followed by a quarter note Bb3 with an accent (^).

Handwritten musical notation for the first system. The treble clef staff contains several notes with accents (^) and slurs. The bass clef staff contains chords and single notes, with a circled 'p' marking a piano dynamic.

Handwritten musical notation for the second system. It includes a 'cresc.' marking with a double arrow indicating a crescendo. The notation features slurs, accents, and various note values across both staves.

Handwritten musical notation for the third system. The treble clef staff shows a series of chords and a melodic line with a slur. The bass clef staff contains chords and rests.

Handwritten musical notation for the fourth system. It includes a 'dim' marking and ends with a box containing the word 'FINE'. The notation is dense with notes and slurs.

Duet

rit.

Handwritten musical notation for a duet section. The top staff is for piano and the bottom for violin. The piano part features chords with accents (^) and some slurs. The violin part has a melodic line with accents (^) and slurs. The key signature has one sharp (F#).

languisim beginn - ständig stetiger (Tempo + Lautstärke)

Handwritten musical notation for a section starting with 'languisim beginn'. The piano part begins with a piano (pp) dynamic and features a series of chords. The violin part has a melodic line with slurs. The tempo and dynamics are indicated to increase steadily.

Handwritten musical notation for a section with dynamics 'Rit. Cresc.' and '8va'. The piano part features chords with slurs and dynamics markings. The violin part has a melodic line with slurs. The tempo and dynamics are indicated to increase steadily.

Pianissimo

Pianissimo 8!

Handwritten musical notation for a section starting with 'Pianissimo'. The piano part features chords with slurs and dynamics markings (p, pp). The violin part has a melodic line with slurs. The section ends with a 'FINE' marking.