

L.v. BEETHOVEN



W.A. MOZART



NOTENHEFT

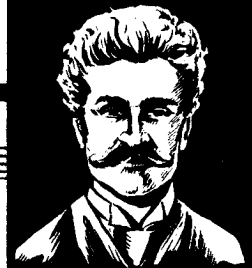
F. SCHUBERT



J. HAYDN



J. STRAUSS



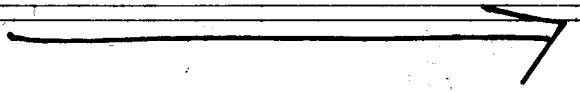
KINDERALBUM 1

MAMA - ICH möcht mit dem

Fritzerl spielen -

gib a Ruh - dummer Bub -

MAMA - ich möcht aber doch mit
dem Fritzerl spielen -



Still bist — der SARG bleibt zu!

breit

3/4

8

8

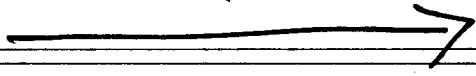
8

(letzte + rit.)

MAMA - ICH mag das Zyankali nicht,

Gib a Ruh, dummer Bub.

MAMA, es ist so bitter -

STILL bist 

schau die Großmütter an, die runterschne

2 Widerspreche - - - - -

Allegretto (Tempo Valse)

Handwritten musical notation for the first system. The treble clef staff begins with a key signature of one flat (B-flat) and a common time signature. The first measure contains a half note G4, a quarter note A4, and a quarter note B4. The second measure contains a half note C5 with a sharp sign (#). The third measure contains a half note B4 with a flat sign (b) and a quarter note A4. The fourth measure contains a half note G4 with a flat sign (b) and a quarter note F4. The bass clef staff contains a half note G2, a quarter note A2, and a quarter note B2.

Handwritten musical notation for the second system. The treble clef staff continues with a half note B4, a quarter note C5, and a quarter note D5. The second measure contains a half note E5 and a quarter note F5. The third measure contains a half note G5 and a quarter note A5. The fourth measure contains a half note B5 and a quarter note C6. The bass clef staff contains a half note G2, a quarter note A2, and a quarter note B2.

Handwritten musical notation for the third system. The treble clef staff begins with a key signature of one flat and a common time signature. The first measure contains a half note G4, a quarter note A4, and a quarter note B4. The second measure contains a half note C5 and a quarter note D5. The third measure contains a half note E5 and a quarter note F5. The fourth measure contains a half note G5 and a quarter note A5. The bass clef staff contains a half note G2, a quarter note A2, and a quarter note B2. The system is marked "lento" and "pp". A double bar line is followed by the instruction "D.C. al".

Handwritten musical notation for the fourth system. The treble clef staff begins with a key signature of one flat and a common time signature. The first measure contains a half note G4, a quarter note A4, and a quarter note B4. The second measure contains a half note C5 and a quarter note D5. The third measure contains a half note E5 and a quarter note F5. The fourth measure contains a half note G5 and a quarter note A5. The bass clef staff contains a half note G2, a quarter note A2, and a quarter note B2. The system is marked "Presto" and "ppp". The piece ends with a double bar line and the word "FINE".

MAMA - WARUM zündest du denn

schon den Christbaum an is

doch erst Ostern?

git a Ruh - dummer Dzub -

— Zu Ostern hat doch niemand

einen Christbaum —

Still bist —————>

— weißt eh — daß d' Leukämie hart!

3

lento

breit

Handwritten musical score for the first system. It consists of two staves: a treble clef staff and a bass clef staff. The treble staff begins with a treble clef and a key signature of one sharp (F#). The music includes various notes, accidentals (sharps, flats, naturals), and slurs. A dynamic marking of *pp* (pianissimo) is present. A circled 'p' is written at the end of the system. There are some handwritten annotations above the treble staff, including '94' and a wavy line.

Handwritten musical score for the second system. It consists of two staves: a treble clef staff and a bass clef staff. The treble staff continues with notes and accidentals, including a *pp* marking. The bass staff has notes with accidentals. There are slurs and dynamic markings throughout the system.

frei

Handwritten musical score for the third system. It consists of two staves: a treble clef staff and a bass clef staff. The treble staff starts with a treble clef and a key signature of one sharp. It is marked *pp* and *frei*. The system ends with a double bar line and the instruction *d.c. al fine*. There are various notes, accidentals, and slurs.

gut.

Handwritten musical score for the fourth system. It consists of two staves: a treble clef staff and a bass clef staff. The treble staff begins with a treble clef and a key signature of one sharp. It is marked *pp* and *gut.* The system ends with a double bar line and the word *FINE*. There are notes, accidentals, and slurs.

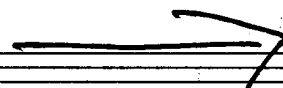
MAMA — MUSS ich noch

lange im Kreis gehen?

Gib a Ruh — dummer Bub —

MAMA —

Still bist



— sonst wird der andere Fuß auch

noch festgewagelt ...!

4

(4+)

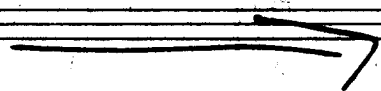
sehr stark (hart)

KINDERALBUM [2]

MAMA - ICH mag die Tante
Luzy nicht -

Gib a Ruh - dummer Bub -

MAMA - ich mag die Tante
Luzy nicht -

Still bist 

gegessen wird, was auf den
Mund
5

brat

Handwritten musical score for the first system. The treble clef staff contains several measures with notes, rests, and dynamic markings like *mf* and *f*. The bass clef staff shows chords and bass notes with accents (^) and slurs.

(Paci)

Handwritten musical score for the second system, starting with the tempo marking "(Paci)". The treble clef staff has a melodic line with slurs and accents. The bass clef staff has chords and bass notes with accents (^) and slurs.

Handwritten musical score for the third system. It begins with a circled "P" in the bass clef staff. The treble clef staff has notes and slurs. The system ends with the instruction "p.c. al f" in the bass clef staff.

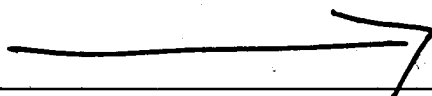
rit...

Handwritten musical score for the final system. It includes the instruction "FINE" in the bass clef staff. There are also some vertical lines and notes in the treble clef staff.

MAMA, ICH KANN NICHT
SCHWIMMEN -

GIB A RUK - DUMMER PUT -

MAMA - ICH KANN NICHT ----
glll ohlll ooo -
SCHWIMMEN -

Still bist 

- schau, wie der Fritzerl brav

untergeht.....!

6

Presto (ohne Unterbrechung (4 bis 6+)

Presto

5

Handwritten musical notation for the first system. The treble clef staff contains notes with accents (^) and slurs. The bass clef staff contains notes with a flat (b) and a sharp (#) symbol. There are dynamic markings like *pp* and *ppp*.

Handwritten musical notation for the second system. The treble clef staff has notes with accents (^) and a sharp (#) symbol. The bass clef staff has notes with a flat (b) and a sharp (#) symbol. Dynamic markings include *pp*.

Handwritten musical notation for the third system. The treble clef staff has notes with accents (^) and slurs. The bass clef staff has notes with a flat (b) and a sharp (#) symbol. Dynamic markings include *pp* and *ppp*. The word "dim" is written in the bass staff.

Handwritten musical notation for the fourth system. The treble clef staff has notes with accents (^) and slurs. The bass clef staff has notes with a flat (b) and a sharp (#) symbol. Dynamic markings include *pp* and *ppp*. The word "Gliss" is written in the bass staff. The system ends with a "FINE" sign.

MAMA — ich bin schon wieder

da —

Gib a Ruh — dumme Gut —

MAMA — ich bin schon wieder da —

wo warst denn ?

MAMA , ich war auf der

psychiatrischen

Universitätsklinik —

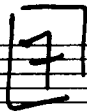
und was hast , Fritzerl ?

MAMA , ich hab au ^uÖdi - pus - Komplex —

Still bist —————→

- Hauptsach - du hast dein

Mutterl recht gem...



Tempo Valse

Handwritten musical notation for the first system. The treble staff contains a melodic line with notes and accidentals (sharps and flats) under a slur. The bass staff contains a bass line with notes and accidentals, including a dynamic marking 'f'.

Handwritten musical notation for the second system. The treble staff contains a melodic line with notes and accidentals under a slur. The bass staff contains a bass line with notes and accidentals, including a dynamic marking 'f'.

Handwritten musical notation for the third system. The treble staff contains a melodic line with notes and accidentals. The bass staff contains a bass line with notes and accidentals, including a dynamic marking 'p'. The word 'din' is written above the first measure, and '(poco bit)' is written above the second measure.

Handwritten musical notation for the fourth system. The treble staff contains a melodic line with notes and accidentals, starting with a dynamic marking 'pp'. The bass staff contains a bass line with notes and accidentals, including a dynamic marking 'ppp'. The system ends with a 'FINE' sign.

MAMA - in der Küche stinkt's so -

Gib a Ruh - dummer Put -

Mama - in der Küche stinkt's a so -

was hast denn getan -

MAMA - ich hab die Großmütli
eingehetzt -

UM Gotteswillen -

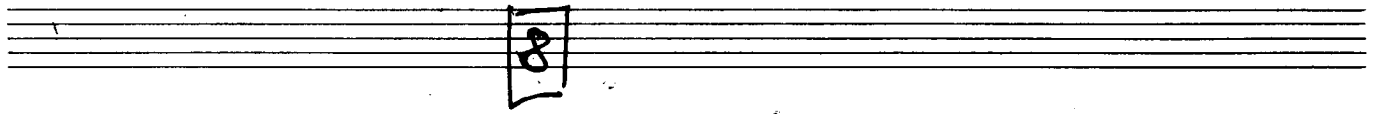
ich hab dir doch gesagt -

daß man nicht alles mögliche

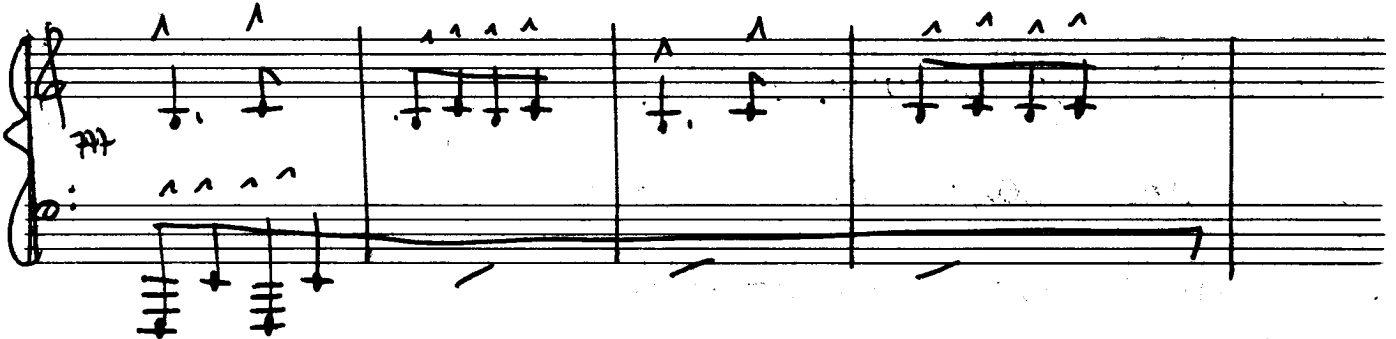
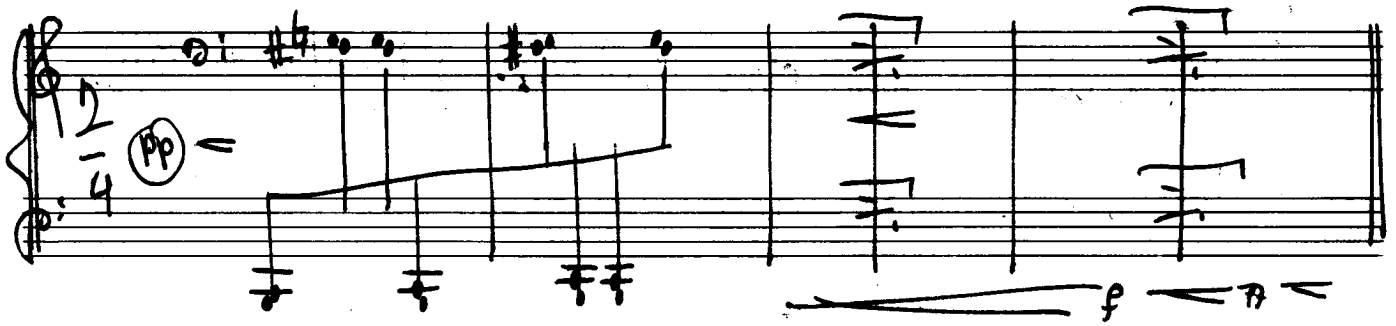
in den Ofen hineinstopfen darf -

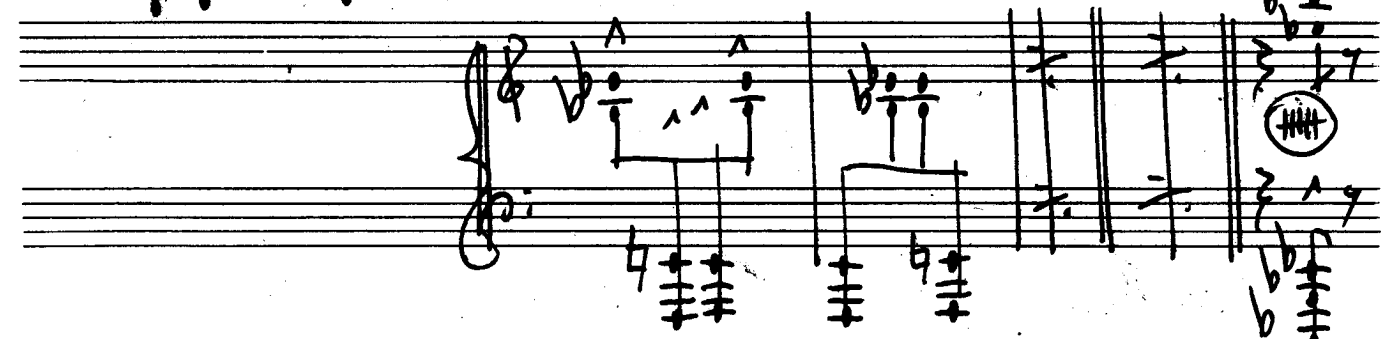
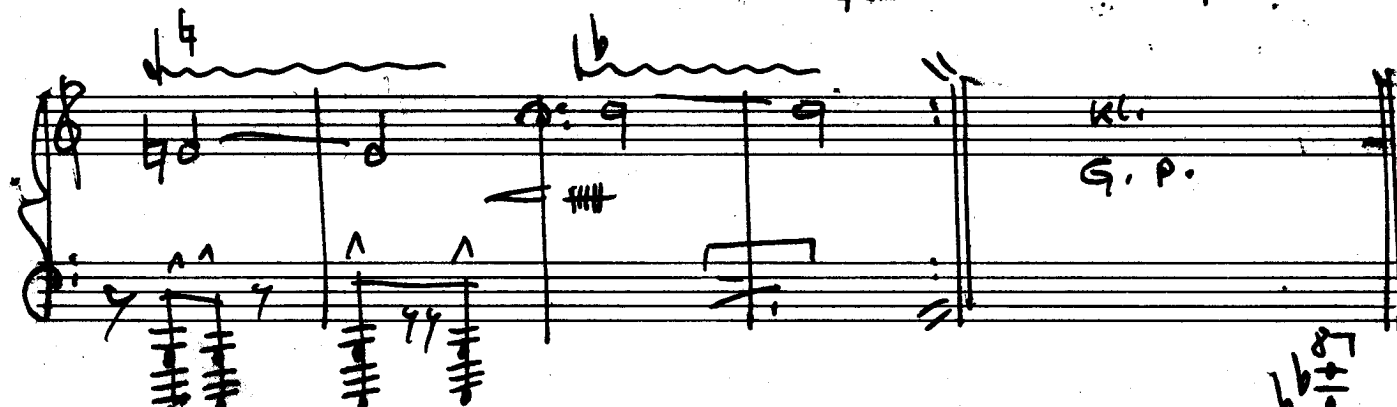
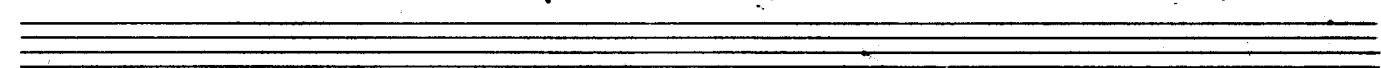
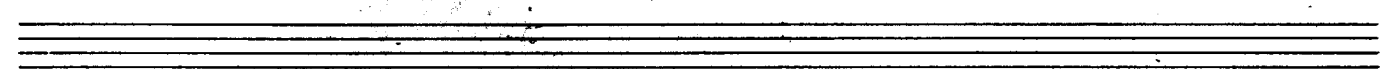
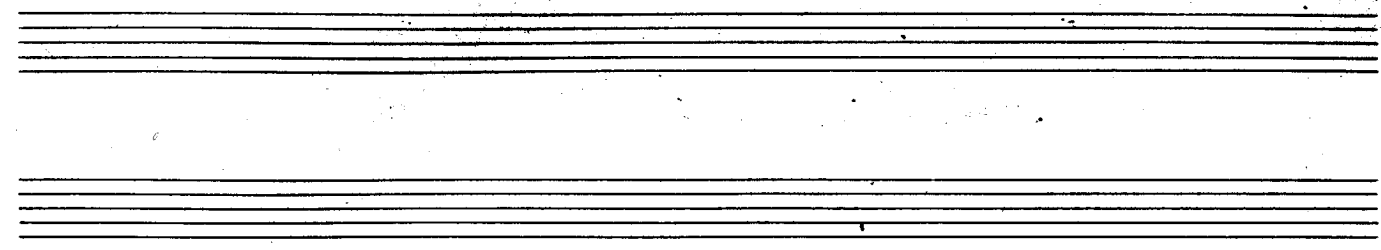


→ | Dann ist es kein Wunder, =
weil er in einemfort ausgeht...!



Prestissimo (4x)





MAMA - ich muß auf die
große Seite -

Still bist -

MAMA - ich muß aber auf
die große Seite -

Still bist →

— schauk, wie

9 brav der Frauzeit in die Hoseu macht —

Allegretto (Allegro con brio) ad lib.

Handwritten musical notation for the first system, measures 1-3. The music is in 6/8 time. The first staff is in treble clef, and the second is in bass clef. Measure 1 starts with a circled 'p' dynamic marking. The melody in the treble clef features a sequence of notes: G4, A4, B4, C5, with a sharp sign above the B4. The bass line consists of quarter notes: G2, F2, E2, D2.

Handwritten musical notation for the second system, measures 4-6. Measure 4 begins with a circled 'f' dynamic marking. The treble clef staff shows a melodic line with notes G4, A4, B4, C5, and a sharp sign above the B4. The bass line continues with quarter notes: G2, F2, E2, D2. Measure 5 features a melodic phrase in the treble clef with notes G4, A4, B4, C5, and a sharp sign above the B4. The bass line has notes G2, F2, E2, D2. Measure 6 shows a melodic phrase in the treble clef with notes G4, A4, B4, C5, and a sharp sign above the B4. The bass line has notes G2, F2, E2, D2.

Handwritten musical notation for the third system, measures 7-9. The treble clef staff shows a melodic line with notes G4, A4, B4, C5, and a sharp sign above the B4. The bass line continues with quarter notes: G2, F2, E2, D2. Measure 8 features a melodic phrase in the treble clef with notes G4, A4, B4, C5, and a sharp sign above the B4. The bass line has notes G2, F2, E2, D2. Measure 9 shows a melodic phrase in the treble clef with notes G4, A4, B4, C5, and a sharp sign above the B4. The bass line has notes G2, F2, E2, D2.

Handwritten musical notation for the fourth system, measures 10-12. The treble clef staff shows a melodic line with notes G4, A4, B4, C5, and a sharp sign above the B4. The bass line continues with quarter notes: G2, F2, E2, D2. Measure 11 features a melodic phrase in the treble clef with notes G4, A4, B4, C5, and a sharp sign above the B4. The bass line has notes G2, F2, E2, D2. Measure 12 shows a melodic phrase in the treble clef with notes G4, A4, B4, C5, and a sharp sign above the B4. The bass line has notes G2, F2, E2, D2.

3+ (git)

Handwritten musical score for guitar and piano. The guitar part is on a single staff with notes and a circled 'p'. The piano part is on a grand staff with chords and a guitar chord diagram. Dynamics include 'pp' and 'p'. The piece ends with 'FINE'.

ruhiger

Handwritten musical score for guitar and piano. The guitar part features a long melodic line with a slur. The piano part has chords. Dynamics include 'p'.

Handwritten musical score for guitar and piano. The guitar part has a wavy line and a slur. The piano part has chords and the text 'git-dun'. Dynamics include 'mf' and 'pp'. The piece ends with 'D.C. al Fine'.

10

resoluto
l'prei
mf
Pedal - x

lento
pp 4/4

mf
pp
FINE

(Prestissimo)

Handwritten musical notation for the first system. The treble clef staff begins with a series of sixteenth-note chords, followed by a melodic line with accents and a fermata. The bass clef staff contains a steady stream of sixteenth-note chords. The system concludes with a few notes in the treble clef.

Handwritten musical notation for the second system. The treble clef staff features a melodic line with accents and a fermata, followed by a series of sixteenth-note chords. The bass clef staff continues with a steady stream of sixteenth-note chords. The system ends with a few notes in the treble clef.

Handwritten musical notation for the third system. The treble clef staff has a melodic line with a fermata and a series of sixteenth-note chords. The bass clef staff continues with a steady stream of sixteenth-note chords. The system concludes with a final note in the treble clef.

*Die.
od. Fine*

MAMA, ich mag keine
Äpfel essen —

Gib a Ruh, dummes Dab —

MAMA — ich mag aber keine
Äpfel essen —

Still bist, —>

— dann ist halt nur die Wüster —

11

sehr rasch

Handwritten musical notation for the first system, measures 1-4. The piece is in 2/4 time. The first measure contains a circled *pp* dynamic marking. The melody in the right hand starts with a quarter rest, followed by quarter notes G4, A4, B4, and C5, each with an accent (^). The bass line consists of a series of chords: G2-B2, G2-B2, G2-B2, and G2-B2.

Handwritten musical notation for the second system, measures 5-8. The melody in the right hand continues with quarter notes B4, A4, G4, and F4, each with an accent (^). The bass line continues with chords: G2-B2, G2-B2, G2-B2, and G2-B2. Dynamics include *pp* and *f*.

Handwritten musical notation for the third system, measures 9-12. The melody in the right hand continues with quarter notes E4, D4, C4, and B3, each with an accent (^). The bass line continues with chords: G2-B2, G2-B2, G2-B2, and G2-B2. Dynamics include *f*.

Handwritten musical notation for the first system. The treble clef staff contains several notes with accents (^) and slurs. The bass clef staff contains chords and single notes. A dynamic marking 'p' is present in the third measure.

Handwritten musical notation for the second system. The treble clef staff has notes with accents and slurs. The bass clef staff has notes and chords. A 'cresc.' marking with an arrow is in the second measure, and a 'f' marking is in the third measure.

Handwritten musical notation for the third system. The treble clef staff has a melodic line with notes and slurs. The bass clef staff has chords and rests. There are some handwritten markings like 'ff' and 'v' in the first measure.

Handwritten musical notation for the fourth system. The treble clef staff has notes with accents and slurs. The bass clef staff has chords and notes. A 'FINE' box is at the end of the system. The word 'din' is written in the second measure.

Andante

pp

accel...

Tempo 1.

p

mf

accel...

Tempo 1.

mf

f

accel...

brist

rit.....

Handwritten musical notation for the first system, featuring two staves with chords and melodic lines. The notation includes various accidentals and dynamic markings like accents (^).

langsam beginnen - ständig steigern (Tempo + Lautstärke)

Handwritten musical notation for the second system, showing a piano introduction with a 'pp' dynamic marking and a steady melodic line in the right hand.

Handwritten musical notation for the third system, including dynamic markings 'Accel. Cresc.' and 'pp'. The notation shows a melodic line in the right hand and a bass line in the left hand.

Handwritten musical notation for the fourth system, starting with 'Pianissimo' and ending with 'FINE'. It includes dynamic markings like 'dim', 'p', and 'pp'. The notation shows a melodic line in the right hand and a bass line in the left hand.