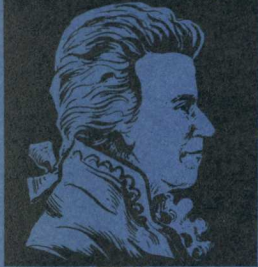


L.v. BEETHOVEN



W.A. MOZART



NOTENHEFT

F. SCHUBERT



J. HAYDN



J. STRAUSS



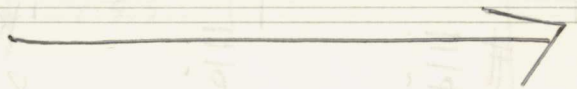
KINDERALBUM 1

MAMA - ICH möcht mit dem

Fritzerl spielen -

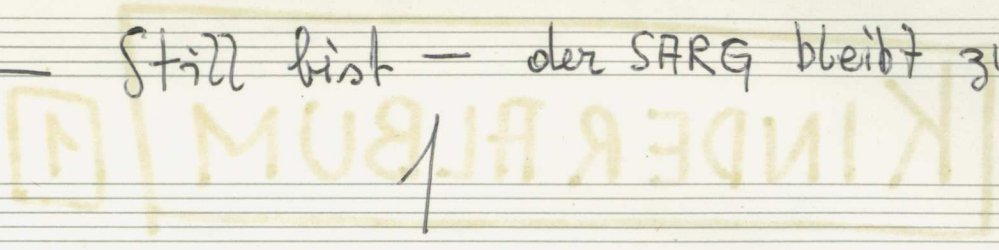
Gib a Ruh - dummer Bub -

MAMA - ich möcht aber doch mit
dem Fritzerl spielen -



Still bist — der SARG bleibt zu!

breit



Handwritten musical notation for the first system. It consists of two staves. The top staff is in treble clef with a 3/4 time signature. It contains two measures of music, each starting with a half note 'd.' followed by a quarter rest, then a quarter note 't', and another quarter rest. The bottom staff is in bass clef and contains two measures of music, each starting with a half note 'd.' followed by a quarter rest, then a quarter note 't', and another quarter rest. Below the bass staff, there are two chords: a D major triad (D, F#, A) and a D major triad (D, F#, A), both with an '8' below them, indicating an octave.

Handwritten musical notation for the second system. It consists of two staves. The top staff is in treble clef and contains four measures of music. The notes are: #d., d., b d., and b d. The bottom staff is in bass clef and contains four measures of music. The notes are: d., b d., b d., and b d. Below the bass staff, there are four chords: a D major triad (D, F#, A), a D major triad (D, F#, A), a D major triad (D, F#, A), and a D major triad (D, F#, A), all with an '8' below them, indicating an octave.


Handwritten musical notation for the third system. It consists of two staves. The top staff is in treble clef and contains four measures of music. The notes are: b d., d., b d., and b d. The bottom staff is in bass clef and contains four measures of music. The notes are: d., b d., b d., and b d. Below the bass staff, there are four chords: a D major triad (D, F#, A), a D major triad (D, F#, A), a D major triad (D, F#, A), and a D major triad (D, F#, A), all with an '8' below them, indicating an octave.

(letzte + rit)

MAMA - ICH mag das Zyankali nicht,

Gib a Ruh, dummer Bub.

MAMA, es ist so bitter -

STILL bist 

schau die Großmutter an, die nimmt ohne

2

Widerrede - - - - -

Allegretto (Tempo Valse)

3/4 (p)

bq. > bq. > #b, oo, oo > b b, b, b, b

pp (poco. rit)

Handwritten musical notation, first system. Treble clef, key signature of one flat (B-flat). Dynamics include *ff*. The system contains four measures of music with various notes and accidentals.

Handwritten musical notation, second system. Treble clef, key signature of one flat. Dynamics include *ff*. The system contains four measures of music, including a triplet of notes in the final measure.

Handwritten musical notation, third system. Treble clef, key signature of one flat. Dynamics include *pp*. The system contains four measures of music, with a *rit.* marking above the first measure and a *rit. al* marking above the second measure.

Handwritten musical notation, fourth system. Treble clef, key signature of one flat. Dynamics include *pp*. The system contains four measures of music, including a *Presto* marking above the first measure and a *FINE* marking at the end.

MAMA - WARUM zündest du denn

schon den Christbaum an is

doch erst Ostern?

Gib a Ruh - dummer Bub -

— Zu Ostern hat doch niemand

einen Christbaum —

Still bist —————>

— weißt eh — daß d' Leukömie hast!

3

Leute

breit

ppp

p

(p)

pp

frei

pp

p.c. ad

git.

pp

FINE

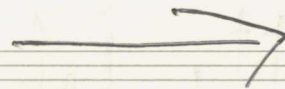
MAMA — Muss ich noch

lange im Kreis gehen?

Gib a' Ruh — dummer Bub —

MAMA —

Still bist



— sonst wird der andere Fuß auch
noch festgewagelt ...!

4

(4+)

sehr rasch (hart)

Handwritten musical notation for the first system. It consists of a grand staff with treble and bass clefs. The time signature is 2/4, and the dynamic marking is *ff*. The notation includes various note values, rests, and accents. The first two measures are marked with a fermata and a tilde symbol. The following measures contain eighth and sixteenth notes with accents.

Handwritten musical notation for the second system. It continues the piece with similar notation and accents. The notation includes various note values, rests, and accents.

Handwritten musical notation for the third system. It continues the piece with similar notation and accents. The notation includes various note values, rests, and accents.

(4x)

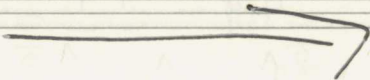
noch accel.

KINDERALBUM [2]

MAMA - ICH mag die Tante
Luzy nicht -

Gib a Ruh - dummer Bub -

MAMA - ich mag die Tante
Luzy nicht -

Still bist 

— gegessen wird, was auf den
Tisch kommt!

5

breit

Handwritten musical notation for the first system, measures 1-3. The system consists of two staves. The upper staff is in treble clef with a 3/4 time signature. The lower staff is in bass clef. The music is marked 'breit'. Measure 1: Treble clef has a quarter note G4 with an accent (^), followed by a half note chord of G4 and B4. Bass clef has a quarter note chord of G2 and B2 with an accent (^), followed by a half note chord of G2 and B2. Measure 2: Treble clef has a half note chord of G4 and B4 with an accent (^). Bass clef has a half note chord of G2 and B2 with an accent (^). Measure 3: Treble clef has a half note chord of G4 and B4 with an accent (^). Bass clef has a half note chord of G2 and B2 with an accent (^).

Handwritten musical notation for the second system, measures 4-6. The system consists of two staves. The upper staff is in treble clef. The lower staff is in bass clef. Measure 4: Treble clef has a quarter note G4 with an accent (^), followed by a half note chord of G4 and B4 with an accent (^). Bass clef has a quarter note chord of G2 and B2 with an accent (^), followed by a half note chord of G2 and B2 with an accent (^). Measure 5: Treble clef has a half note chord of G4 and B4 with an accent (^). Bass clef has a half note chord of G2 and B2 with an accent (^). Measure 6: Treble clef has a half note chord of G4 and B4 with an accent (^). Bass clef has a half note chord of G2 and B2 with an accent (^).

Handwritten musical notation for the third system, measures 7-9. The system consists of two staves. The upper staff is in treble clef. The lower staff is in bass clef. Measure 7: Treble clef has a quarter note G4 with an accent (^), followed by a half note chord of G4 and B4 with an accent (^). Bass clef has a quarter note chord of G2 and B2 with an accent (^), followed by a half note chord of G2 and B2 with an accent (^). Measure 8: Treble clef has a half note chord of G4 and B4 with an accent (^). Bass clef has a half note chord of G2 and B2 with an accent (^). Measure 9: Treble clef has a half note chord of G4 and B4 with an accent (^). Bass clef has a half note chord of G2 and B2 with an accent (^).

Handwritten musical notation for the first system. The treble clef staff contains several notes with slurs and accents. The bass clef staff contains chords with accents and a final whole note chord.

(Paci)

Handwritten musical notation for the second system, starting with a 4/4 time signature. The treble clef staff has a melodic line with slurs and accents. The bass clef staff has chords with accents. A 'Paci' marking is written above the first measure.

Handwritten musical notation for the third system. The treble clef staff has a melodic line with slurs and accents. The bass clef staff has chords with accents. A circled 'P' is written in the first measure, and 'p.c.' is written at the end of the system.

git...

Handwritten musical notation for the fourth system. The treble clef staff has a melodic line with slurs and accents. The bass clef staff has chords with accents. The words 'lunga' and 'FINE' are written in the middle of the system.

MAMA, ICH kann nicht
schwimmen -

Gib a Ruh - dummer Bub -

Mama - ich kann nicht ----
glll ohlllloo -
schwimmen -

Still bist 

- schau, wie der Fritzerl brav

untergeht.....!

6

Presto (ohne Unterbrechung (4 bis 6+)

Presto

5

Handwritten musical notation for the first system. The treble clef staff contains notes with accents (^) and slurs. The bass clef staff contains notes with a flat (b) and a sharp (#) sign. The system concludes with a double bar line.

Handwritten musical notation for the second system. The treble clef staff features notes with accents (^) and slurs. The bass clef staff contains notes with flats (b) and a sharp (#) sign. The system concludes with a double bar line.

Handwritten musical notation for the third system. The treble clef staff contains notes with accents (^) and slurs. The bass clef staff contains notes with a sharp (#) sign and the word "dim" written below. The system concludes with a double bar line.

Handwritten musical notation for the fourth system. The treble clef staff contains notes with accents (^) and slurs. The bass clef staff contains notes with a sharp (#) sign and the word "FINE" written in a box. The system concludes with a double bar line.

MAMA — ich bin schon wieder

da —

Gib a Ruh — dummer Bub —

MAMA — ich bin schon wieder da —

wo warst denn ?

MAMA , ich war auf der

psychiatrischen

Universitätsklinik —

und was hast , Fritzerl ?

MAMA , ich hab au^u Odi - pus - Komplex —

Still bist 

- Hauptsach - du hast dein
Mutterl recht gern.....

7

Tempo Valse

Handwritten musical notation for the first system. The treble clef contains a melodic line with notes and accidentals (sharps and flats) under a slur. The bass clef contains a bass line with notes and accidentals. Dynamic markings include *f* (forte) and *ff* (fortissimo).

Handwritten musical notation for the second system. The treble clef has a melodic line with notes and accidentals, some with accents (^). The bass clef has a bass line with notes and accidentals. Dynamic markings include *ff* (fortissimo).

Handwritten musical notation for the third system. The treble clef contains a melodic line with notes and accidentals. The word *dim* (diminuendo) is written above the first measure, and *(poco rit)* (poco ritardando) is written above the second measure. Dynamic markings include *p* (piano).

Handwritten musical notation for the fourth system. The treble clef contains a melodic line with notes and accidentals. The word *ppp* (pianissimo) is written below the first measure. The system ends with a *FINE* sign. The bass clef has a final chord with notes and accidentals, marked with *ppp*.

MAMA - in der Küche stinkts so -

Gib a Ruh - dünner But -

Mama - in der Küche stinkts a so -

was hast denn getan -

MAMA - ich hab die Großmütli
eingeheizt -

UM Gotteswillen -

ich hab dir doch gesagt -

daß man nicht alles mögliche

in den Ofen hineinstopfen darf -

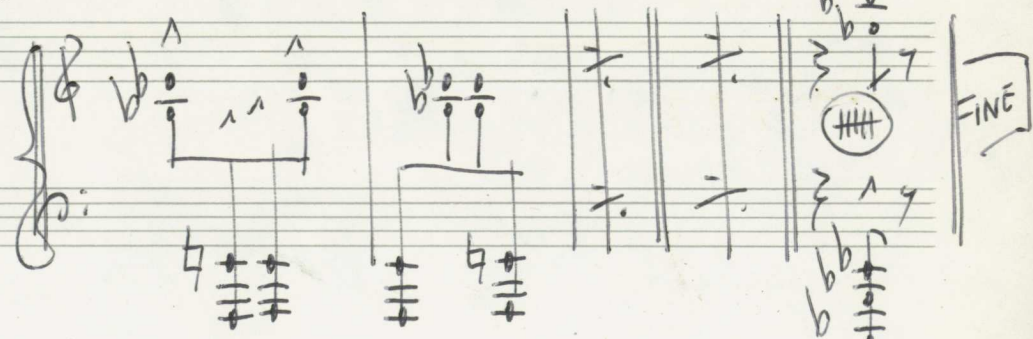
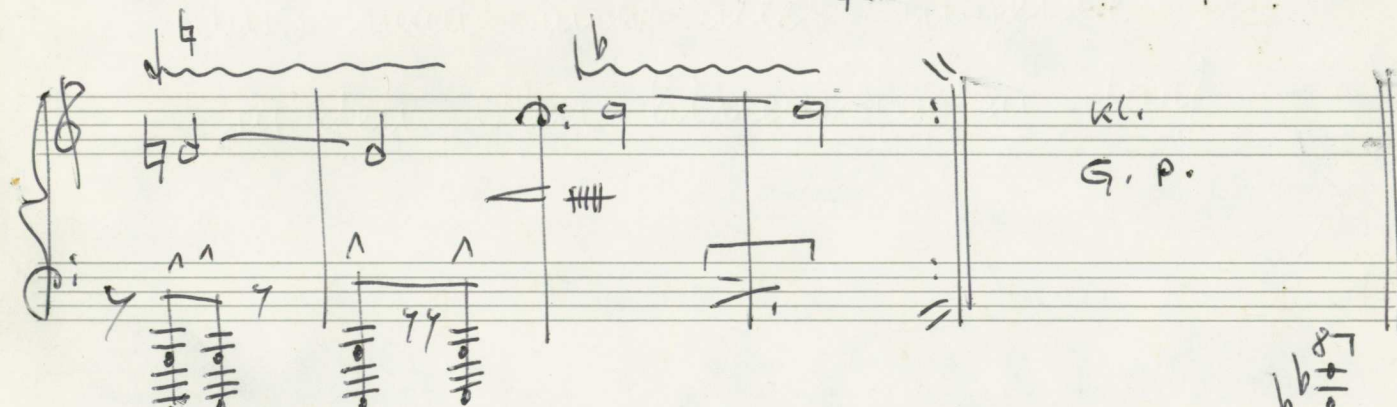
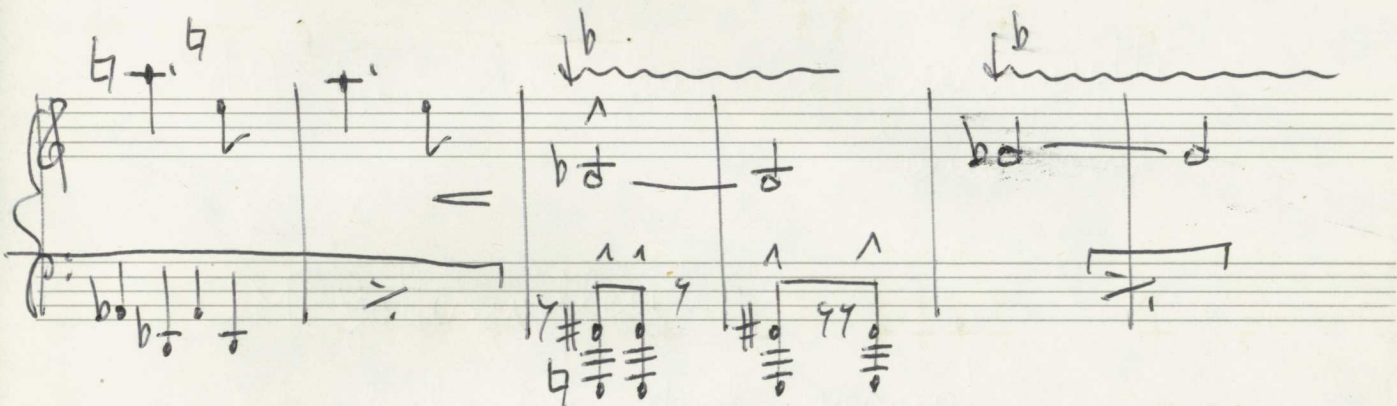


→ | Dann ist es kein Wunder, -
weil er in einemfort ausgeht...!

8

Prestissimo

(4x)



MAMA - ich muß auf die
große Seite -

Still bist -

MAMA - ich muß aber auf
die große Seite -

Still bist →

— schauk, wie

9 brav der Frauzeit in die Hose macht —

Allegretto (Allegro con brio) ad lib.

Handwritten musical notation for the first system. It consists of two staves: a treble clef staff and a bass clef staff. The time signature is 6/8. The treble staff contains a melodic line with a circled 'p' dynamic marking. The bass staff contains a bass line with rhythmic patterns. The system is divided into three measures by vertical bar lines.

Handwritten musical notation for the second system. It consists of two staves. The treble staff has a circled 'f' dynamic marking. The system is divided into three measures. The notation includes slurs, accents, and various rhythmic values.

Handwritten musical notation for the third system. It consists of two staves. The treble staff has a circled 'f' dynamic marking. The system is divided into three measures. The notation includes slurs and various rhythmic values.

Handwritten musical notation for the fourth system. It consists of two staves. The treble staff has a circled 'f' dynamic marking. The system is divided into three measures. The notation includes slurs and various rhythmic values.

3+ (rit)

Handwritten musical score for the first system. The treble staff contains a melodic line with notes and rests, including a circled 'p' and a 'pp' marking. The bass staff contains a bass line with notes and rests. The system concludes with a double bar line and the word 'FINE' written vertically.

ruhiger

Handwritten musical score for the second system. The treble staff contains a melodic line with notes and rests, including a 'p' marking. The bass staff contains a bass line with notes and rests. The system concludes with a double bar line.

Handwritten musical score for the third system. The treble staff contains a melodic line with notes and rests, including a 'mf' marking and the text 'rit-dim'. The bass staff contains a bass line with notes and rests, including a 'pp' marking. The system concludes with a double bar line and the text 'D.C. al Fine' written vertically.

10

resoluto
l'prei

ppp

Pedal - x

Leuto

pp

ppp

ppp

ppp

FINE

(Prestissimo)

Handwritten musical notation for the first system, featuring a grand staff with treble and bass clefs. The right hand has a complex melodic line with many beamed notes and accents, while the left hand plays a steady accompaniment of chords. A forte (ff) dynamic marking is present.

Handwritten musical notation for the second system, continuing the piece. The right hand features more complex melodic patterns with accents and slurs, and the left hand continues with chordal accompaniment.

Handwritten musical notation for the third system, concluding the piece. The right hand has a final melodic flourish, and the left hand ends with a series of chords. A fermata is placed over the final notes.

*Dir.
od. Fine*

MAMA, ich mag keine
Äpfel essen —

Gib a Ruh, dummer Bub —

MAMA — ich mag aber keine
Äpfel essen —

Still bist, —>

— dann ist halt nur die Wäzner —

11

sehr rasch

Handwritten musical notation for the first system. It features a grand staff with treble and bass clefs. The time signature is 2/4. The piece begins with a piano (*pp*) dynamic. The melody in the treble clef consists of quarter notes with accents (^) and a sharp sign (#). The bass clef accompaniment consists of chords. There are some faint handwritten notes in the background.

Handwritten musical notation for the second system. The melody continues with quarter notes and accents (^). Dynamics include *mf* and *f*. The bass clef accompaniment continues with chords. There are some faint handwritten notes in the background.

Handwritten musical notation for the third system. The melody continues with quarter notes and accents (^). Dynamics include *ff*. The bass clef accompaniment continues with chords. There are some faint handwritten notes in the background.

Handwritten musical notation for the first system. The treble clef staff contains several notes with accents (^) and slurs. The bass clef staff contains chords and notes, with a dynamic marking 'p' (piano) in a circle. The system concludes with a double bar line.

Handwritten musical notation for the second system. The treble clef staff has notes with accents and slurs. The bass clef staff has notes and chords, with a dynamic marking 'f' (forte) and a 'cresc.' (crescendo) marking with an arrow pointing left. The system ends with a double bar line.

Handwritten musical notation for the third system. The treble clef staff has notes with accents and slurs. The bass clef staff contains chords and notes. The system ends with a double bar line.

Handwritten musical notation for the fourth system. The treble clef staff has notes with accents and slurs. The bass clef staff has notes and chords, with a dynamic marking 'p' in a circle. The system concludes with a double bar line and a box containing the word 'FINE'.

Andante

pp

accel...

rit.

Tempo 1.

p

accel...

rit.

Tempo 1.

mf

f

accel...

rit.

Dreit

rit.....

Handwritten musical notation for the first system. The piano part (top staff) begins with a treble clef and a key signature of one sharp (F#). It contains four measures of chords, with accents (^) above the notes. The bass part (bottom staff) contains four measures of chords, also with accents (^) above the notes. The notation is in a simple, blocky style.

langsam beginnen - ständig steigern (Tempo + Lautstärke)

Handwritten musical notation for the second system. The piano part (top staff) starts with a dynamic marking of *pp* (pianissimo). It contains four measures of chords and melodic lines. The bass part (bottom staff) contains four measures of chords, with some notes marked with accents (>).

Handwritten musical notation for the third system. The piano part (top staff) includes dynamic markings for *Acc.* (accelerando) and *Cresc.* (crescendo). It contains four measures of chords and melodic lines. The bass part (bottom staff) contains four measures of chords, with some notes marked with accents (>).

Prestissimo

Prestissimo 8.

Handwritten musical notation for the fourth system. The piano part (top staff) starts with a dynamic marking of *pp* and includes a *dim* (diminuendo) marking. It contains four measures of chords and melodic lines. The bass part (bottom staff) contains four measures of chords, with some notes marked with accents (>). The system ends with a box containing the word "FINE".