

L.v. BEETHOVEN



W.A. MOZART

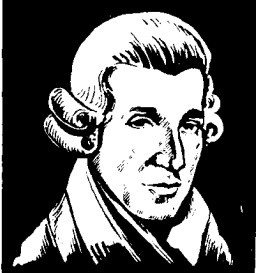


NOTENHEFT

F. SCHUBERT



J. HAYDN



J. STRAUSS



sehr bewegt —

ORGEL

C ff

[G B] [G B \flat]

[G B] [G B \flat]

[G B] [G B \flat]

R.H.

meno —

Tempo 1

4 4 4 4

4 4 4 4

4 4 4 4

4 4 4 4

Handwritten musical score system 1. It consists of two staves. The upper staff is in treble clef and contains a series of notes with a slur above them and a bracket below. The lower staff is in bass clef and contains a series of notes with a slur below them. The music is in a minor key, indicated by a flat sign on the first note of the upper staff.

Handwritten musical score system 2. It consists of two staves. The upper staff is in treble clef and contains a series of notes with a slur above them and a bracket below. The lower staff is in bass clef and contains a series of notes with a slur below them. The music is in a minor key, indicated by a flat sign on the first note of the upper staff.

Handwritten musical score system 3. It consists of two staves. The upper staff is in treble clef and contains a series of notes with a slur above them and a bracket below. The lower staff is in bass clef and contains a series of notes with a slur below them. The music is in a minor key, indicated by a flat sign on the first note of the upper staff.

Handwritten musical score system 4. It consists of two staves. The upper staff is in treble clef and contains a series of notes with a slur above them and a bracket below. The lower staff is in bass clef and contains a series of notes with a slur below them. The music is in a minor key, indicated by a flat sign on the first note of the upper staff.

Handwritten musical score for the first system. The treble clef part has a 4-measure melodic line with a slur and a fermata. The bass clef part has a 4-measure accompaniment with a slur and a fermata.

Handwritten musical score for the second system. The treble clef part has a 4-measure melodic line with a slur and a fermata. The bass clef part has a 4-measure accompaniment with a slur and a fermata.

Handwritten musical score for the third system. The treble clef part has a 4-measure melodic line with a slur and a fermata. The bass clef part has a 4-measure accompaniment with a slur and a fermata.

Handwritten musical score for the fourth system. The treble clef part has a 4-measure melodic line with a slur and a fermata. The bass clef part has a 4-measure accompaniment with a slur and a fermata. The system ends with a CODA symbol.

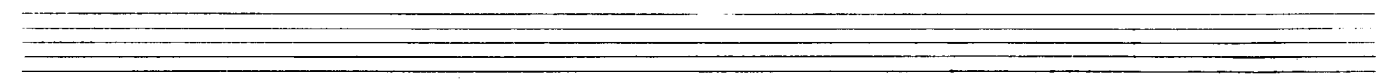
etwas breiter

Handwritten musical notation for the first system. The treble clef staff contains a melodic line with a slur over the first four notes. The bass clef staff contains four chords, each with a fermata-like symbol.

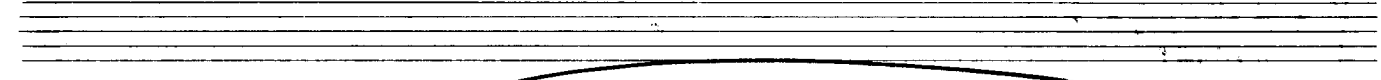
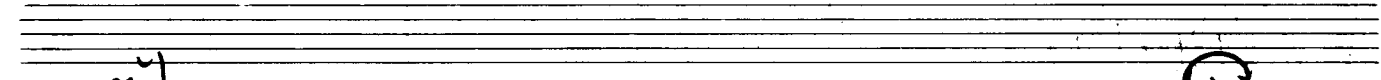
Handwritten musical notation for the second system. The treble clef staff contains a melodic line with a slur over the first four notes. The bass clef staff contains four chords, each with a fermata-like symbol.

immer ruhiger →

Handwritten musical notation for the third system. The treble clef staff contains a melodic line with a slur over the first four notes. The bass clef staff contains four chords, each with a fermata-like symbol.

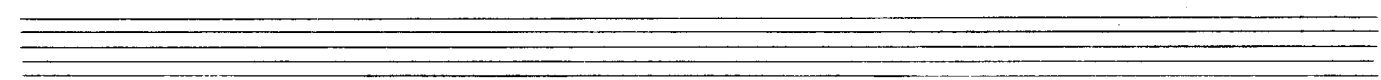


sehr breit

rit -----

pessante



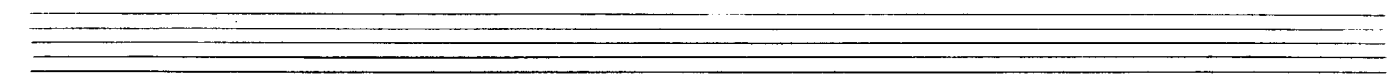
sehr ruhige 4 (zart)

Handwritten musical notation for the first system. The upper staff (treble clef) contains a melodic line with notes and accidentals (flats and sharps). The lower staff (bass clef) contains chordal accompaniment with various accidentals and a wavy line indicating a tremolo or similar effect.

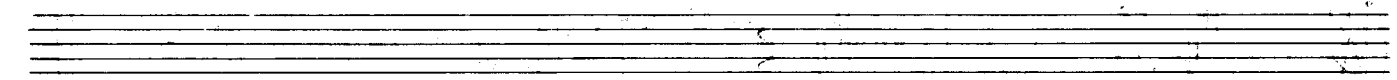
Handwritten musical notation for the second system. The upper staff continues the melodic line with a series of notes and accidentals. The lower staff provides harmonic support with chords and accidentals, including a wavy line.

Handwritten musical notation for the third system. The upper staff continues the melodic line with notes and accidentals. The lower staff provides harmonic support with chords and accidentals.

Handwritten musical notation for the fourth system, concluding the piece. The upper staff has a melodic line with a final cadence. The lower staff has a final chord. A 'C' time signature is visible on the right side of the system.



frei (rubato) — steigern —>



Handwritten musical notation on a grand staff. The right hand (treble clef) features a circled '7M' above the first measure, followed by a long melodic line with a slur. The left hand (bass clef) has a '7' above the first measure and plays a rhythmic accompaniment of eighth notes with slurs.

stacc.

Handwritten musical notation on a grand staff. The right hand continues the melodic line with slurs and a sharp sign. The left hand plays a rhythmic accompaniment with slurs.

Handwritten musical notation on a grand staff. The right hand features a melodic line with slurs and sharp signs. The left hand plays a rhythmic accompaniment with slurs and sharp signs.

treibend (zum Anfangstempo)

Handwritten musical notation on a grand staff. The right hand features a melodic line with slurs and sharp signs. The left hand plays a rhythmic accompaniment with slurs and sharp signs.

(poco rit)

Handwritten musical notation for the first system. The top staff is in treble clef and the bottom staff is in bass clef. The music consists of a complex melodic line with many notes and accidentals, and a bass line with a sharp sign (#) and a few notes. The system ends with a double bar line.

(frei spielen (quasi Kadenzen)

Handwritten musical notation for the second system. The top staff is in treble clef and the bottom staff is in bass clef. The music consists of a complex melodic line with many notes and accidentals, and a bass line with a sharp sign (#) and a few notes. The system ends with a double bar line.

Handwritten musical notation for the third system. The top staff is in treble clef and the bottom staff is in bass clef. The music consists of a complex melodic line with many notes and accidentals, and a bass line with a sharp sign (#) and a few notes. The system ends with a double bar line.

Handwritten musical notation for the fourth system. The top staff is in treble clef and the bottom staff is in bass clef. The music consists of a complex melodic line with many notes and accidentals, and a bass line with a sharp sign (#) and a few notes. The system ends with a double bar line.

(rit)

D.C.
al
CODA

großes rit.

CODA

breit

lungen