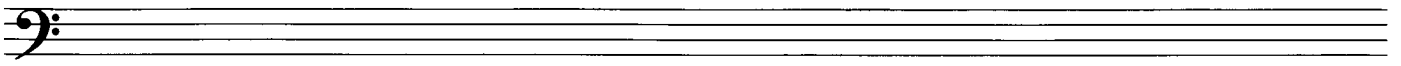


FANTASIE für

Flöte und Klavier

v.

A. Scherbaum



Lento

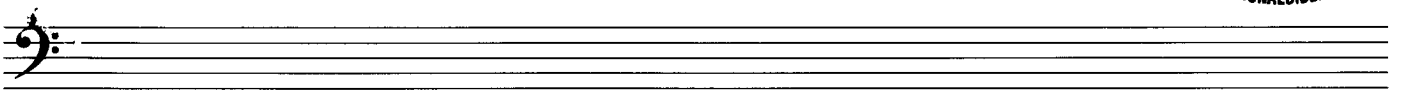
PIANO

Flöte



F 153 Scherbaum 1630

MUSIKSAMMLUNG
ÖSTERR.
NATIONALBIBLIOTHEK



Handwritten musical score for the first system. It consists of three staves. The top staff is in treble clef and contains a series of notes with accidentals (flats and naturals) and a large bracket above it. The middle and bottom staves are in bass clef and contain notes with accents and slurs.

Handwritten musical score for the second system. It consists of three staves. The top staff features a triplet of eighth notes, followed by a triplet of sixteenth notes, and then a series of notes with a 'dim' (diminuendo) marking. The middle and bottom staves contain notes with slurs and accents.

Handwritten musical score for the third system. It consists of three staves. The top staff has a wavy line above it, indicating a tremolo or rapid oscillation. It includes dynamic markings such as 'p' (piano), 'f' (forte), and '(rit)' (ritardando). The middle and bottom staves contain notes with slurs and accents.

Three empty bass clef staves at the bottom of the page, intended for additional notation or performance instructions.

frei (♩)

FLÖTE

PIANO

Pedal pp

Pedal aus

(♩)

Pedal p

Pedal

frei (♩)

rubato

Pedal. *rit.*

ppp

Lento

Rimmerad / Vibrato

Pedal pp

rit. ad lib.

Allegretto

Handwritten musical score for the first system. It features three staves: a top staff with a treble clef and a 2/4 time signature, and two lower staves with treble and bass clefs respectively. The music is in a key with one flat (B-flat major or D minor). The top staff contains a melodic line with various ornaments and slurs. The lower staves provide harmonic support with chords and single notes. A circled 'P' is written above the first measure of the top staff, and the text '(bei 8 Presto!)' is written below it. The system concludes with a double bar line.

Handwritten musical score for the second system, continuing from the first. It consists of three staves. The top staff continues the melodic line with slurs and ornaments. The middle and bottom staves continue the harmonic accompaniment. A circled 'P' is present above the first measure of the top staff. The system ends with a double bar line.

Handwritten musical score for the third system. It consists of three staves. The top staff continues the melodic line. The middle and bottom staves continue the harmonic accompaniment. A circled 'P' is present above the first measure of the top staff. The system ends with a double bar line.

Handwritten musical score for the fourth system. It consists of three staves. The top staff continues the melodic line. The middle and bottom staves continue the harmonic accompaniment. A circled 'P' is present above the first measure of the top staff. The system ends with a double bar line.

Handwritten musical score for the first system. It consists of two staves: a treble clef staff and a bass clef staff. The treble staff contains several measures of music with notes, rests, and dynamic markings like mf . The bass staff contains notes and rests. There are various accidentals (sharps, flats) and slurs throughout the system.

Handwritten musical score for the second system. It consists of two staves: a treble clef staff and a bass clef staff. The treble staff has notes with slurs and dynamic markings like mf . The bass staff has notes and rests. There are various accidentals and slurs throughout the system.

Handwritten musical score for the third system. It consists of two staves: a treble clef staff and a bass clef staff. The treble staff has notes with slurs and dynamic markings like mf . The bass staff has notes and rests. There are various accidentals and slurs throughout the system.

Handwritten musical score for the fourth system. It consists of two staves: a treble clef staff and a bass clef staff. The treble staff has notes with slurs and dynamic markings like f . The bass staff has notes and rests. There is a 'Pedal' marking in the bass staff. There are various accidentals and slurs throughout the system.

Handwritten musical score for the first system. It consists of three staves. The top staff is in treble clef with a key signature of one sharp (F#) and a common time signature. It contains a melodic line with slurs, accents, and dynamic markings including *p* and *pp*. The middle staff is in treble clef with a 2/4 time signature and contains a bass line with slurs and dynamic markings. The bottom staff is in bass clef with a 4/4 time signature and contains a bass line with slurs and dynamic markings. The word "Pedal" is written below the bottom staff.

Handwritten musical score for the second system. It consists of three staves. The top staff is in treble clef with a key signature of one sharp (F#) and a common time signature. It contains a melodic line with slurs, accents, and dynamic markings including *mf* and *f*. The middle staff is in treble clef with a 2/4 time signature and contains a bass line with slurs and dynamic markings. The bottom staff is in bass clef with a 4/4 time signature and contains a bass line with slurs and dynamic markings. The word "Pedal" is written below the bottom staff.

Handwritten musical score for the third system. It consists of three staves. The top staff is in treble clef with a key signature of one sharp (F#) and a common time signature. It contains a melodic line with slurs, accents, and dynamic markings including *sf*. The middle staff is in treble clef with a 2/4 time signature and contains a bass line with slurs and dynamic markings. The bottom staff is in bass clef with a 4/4 time signature and contains a bass line with slurs and dynamic markings.

Handwritten musical score for the fourth system. It consists of three staves. The top staff is in treble clef with a key signature of one sharp (F#) and a common time signature. It contains a melodic line with slurs, accents, and dynamic markings including *mf* and *p*. The middle staff is in treble clef with a 4/4 time signature and contains a bass line with slurs and dynamic markings. The bottom staff is in bass clef with a 4/4 time signature and contains a bass line with slurs and dynamic markings. The word "(rit)" is written in a circle in the middle of the system.

ruhig (♩) ad lib.

Handwritten musical score for the first system. It consists of three staves: treble clef (top), piano (middle), and bass clef (bottom). The treble staff begins with a rest, followed by notes with dynamics like *p* and *mf*. The piano staff has a large '2' and 'Pedal' marking with a circled 'P' and a fermata. The bass staff contains notes with various accidentals and dynamics.

Handwritten musical score for the second system. It consists of three staves: treble clef (top), piano (middle), and bass clef (bottom). The treble staff has notes with dynamics like *f* and *mf*. The piano staff has a 'Pedal' marking and a circled 'P'. The bass staff has notes with various accidentals and dynamics.

Handwritten musical score for the third system. It consists of two staves: treble clef (top) and piano (bottom). The treble staff has notes with dynamics like *fp*. The piano staff has a 'Pedal' marking and a circled 'P'. There are some scribbles and markings in the piano part.

Handwritten musical score for the fourth system. It consists of two staves: treble clef (top) and piano (bottom). The treble staff has notes with dynamics like *p* and *fp*. The piano staff has a 'Pedal' marking and a circled 'P'. There are some scribbles and markings in the piano part.

Handwritten musical score for the first system. It consists of three staves: Flute (top), Clarinet (middle), and Bassoon (bottom). The Flute staff has a treble clef and contains notes with accidentals (flats and naturals), slurs, and dynamic markings like *p* and *fp*. The Clarinet and Bassoon staves have treble and bass clefs respectively, with notes, slurs, and dynamic markings like *pp*. There are also some handwritten annotations and symbols, including a large bracket over the first two staves and some illegible text.

Handwritten musical score for the second system. It consists of three staves: Flute (top), Clarinet (middle), and Bassoon (bottom). The Flute staff has a treble clef and contains notes with accidentals, slurs, and dynamic markings like *p*. The Clarinet and Bassoon staves have treble and bass clefs respectively, with notes, slurs, and dynamic markings like *pp*. There are also some handwritten annotations and symbols, including a large bracket over the first two staves and some illegible text.

Handwritten musical score for the third system. It consists of three staves: Flute (top), Clarinet (middle), and Bassoon (bottom). The Flute staff has a treble clef and contains notes with accidentals, slurs, and dynamic markings like *pp*. The Clarinet and Bassoon staves have treble and bass clefs respectively, with notes, slurs, and dynamic markings like *pp*. There are also some handwritten annotations and symbols, including a large bracket over the first two staves and some illegible text.

Basso clef

Flöte Solo (frei)! (1)

mf

fp

f

p

Basso clef

p

f

Basso clef

ff

p

C. G.P.

lunga

Basso clef

Lento

p

pp

Basso clef

(flimmend) Vibrato

pp

Basso clef

pp (aber deutlich)

Ped.

pp

Allegretto (accel.) — bis Presto

Handwritten musical score for the first system. It consists of two staves: a treble clef staff on top and a bass clef staff on the bottom. The treble staff begins with a large '2' and a 'pp' dynamic marking. The bass staff begins with a large '4' and a 'pp' dynamic marking. The music is written in a 2/4 time signature. The first two measures show a simple melodic line in the treble and a bass line in the bass. The third measure has a 'pp<' marking. The fourth measure has a circled '2' in the bass staff. The system ends with a double bar line.

Handwritten musical score for the second system. It consists of two staves. The treble staff has a 'f' dynamic marking. The bass staff has an 'accel.' marking. The music continues with more complex melodic and harmonic structures. The system ends with a double bar line.

Handwritten musical score for the third system. It consists of two staves. The treble staff has a 'f' dynamic marking. The bass staff has an 'accel.' marking. The music continues with more complex melodic and harmonic structures. The system ends with a double bar line.

Handwritten musical score for the fourth system. It consists of two staves. The treble staff has a 'Presto' marking. The bass staff has a 'P' marking. The music continues with more complex melodic and harmonic structures. The system ends with a double bar line.

Prestissimo

Handwritten musical score for the first system, measures 1-4. It features a treble clef staff with a key signature of one flat and a 2/4 time signature. The bass clef staff has a 4/4 time signature. Dynamics include *ppp* and *p*. There are various accidentals and slurs throughout.

Handwritten musical score for the second system, measures 5-8. It continues the notation from the first system, with dynamics like *p* and *f*. There are many accidentals and slurs.

Handwritten musical score for the third system, measures 9-12. It features a treble clef staff with a key signature of one flat and a 2/4 time signature. The bass clef staff has a 4/4 time signature. Dynamics include *f* and *ff*. There are many accidentals and slurs.

Handwritten musical score for the fourth system, measures 13-16. It features a treble clef staff with a key signature of one flat and a 2/4 time signature. The bass clef staff has a 4/4 time signature. Dynamics include *m* and *ff*. There are many accidentals and slurs. The word "dicht Trill." is written above the staff, and "hart" is written above the final measure.