

FANTASIE für

Flöte und Klavier

v.

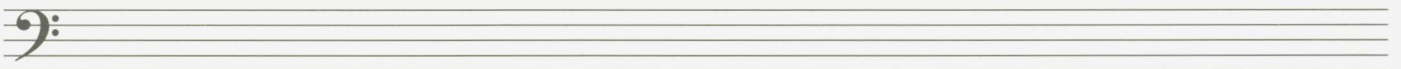
A. Scherbaum



Lento

PIANO

Flöte



F 153 Scherbaum 1630

MUSIKSAMMLUNG
ÖSTERR.
NATIONALBIBLIOTHEK

Handwritten musical notation for the first system, featuring a treble clef staff with a key signature change to one flat and a large bracketed section of notes, and two lower staves with rhythmic accompaniment.

Handwritten musical notation for the second system, including a treble clef staff with triplets and dynamic markings like *mf*, and two lower staves with rhythmic accompaniment.

Handwritten musical notation for the third system, featuring a treble clef staff with a wavy line, dynamic markings like *pp* and *rit*, and two lower staves with rhythmic accompaniment.

Empty bass clef staff.

Empty bass clef staff.

Empty bass clef staff.

frei

(♩)

FLÖTE

PIANO

Handwritten musical score for the first system. The Flute part (top staff) begins with a melodic line marked *frei* and *pp*. The Piano part (middle and bottom staves) features a complex pedal point with a *Pedal pp* marking. A large slur covers the piano accompaniment, and a *Pedal ans* marking is present at the end of the system.

Handwritten musical score for the second system. The Flute part continues with a melodic line marked *pp*. The Piano part features a complex pedal point with a *Pedal p* marking. A large slur covers the piano accompaniment, and a *Pedal p* marking is present at the end of the system.

Handwritten musical score for the third system. The Flute part begins with a melodic line marked *frei* and *ppp*. The Piano part features a complex pedal point with a *Pedal pp* marking. A large slur covers the piano accompaniment, and a *ppp* marking is present at the end of the system. The word *rubato* is written below the piano part.

Handwritten musical score for the fourth system. The Flute part begins with a melodic line marked *Lento* and *pp*. The Piano part features a complex pedal point with a *Pedal pp* marking. A large slur covers the piano accompaniment, and a *pp* marking is present at the end of the system. The words *Rimmerad/Vibrato* are written above the piano part.

Allegretto

Handwritten musical score for the first system. It features three staves: a treble clef staff with a 2/4 time signature, a soprano clef staff, and a bass clef staff. The music is marked with a piano dynamic (p) and includes the instruction "(bei f Presto!)". The notation includes various notes, rests, and dynamic markings such as accents and slurs.

Handwritten musical score for the second system. It continues the three-staff format. The music features a variety of rhythmic patterns and dynamic markings, including accents and slurs. The notation is dense and expressive, with some notes marked with a forte dynamic (f).

Handwritten musical score for the third system. The notation continues across the three staves, showing complex melodic lines and harmonic support. Dynamic markings like forte (f) and accents are used throughout the system.

Handwritten musical score for the fourth system. This system concludes the piece with sustained notes in the lower staves and active melodic lines in the upper staves. The notation includes various ornaments and dynamic markings.

Handwritten musical score for the first system. It consists of two staves: a treble clef staff on top and a bass clef staff on the bottom. The treble staff contains several measures of music with complex chordal textures, including triplets and various accidentals (sharps, flats, naturals). The bass staff contains a few notes, some with accents, and a wavy line indicating a pedal point or sustained bass.

Handwritten musical score for the second system. It consists of two staves: a treble clef staff on top and a bass clef staff on the bottom. The treble staff has several measures with complex chordal textures and dynamic markings like 'p' (piano) and 'm' (mezzo-forte). The bass staff contains notes with accents and dynamic markings.

Handwritten musical score for the third system. It consists of two staves: a treble clef staff on top and a bass clef staff on the bottom. The treble staff has several measures with complex chordal textures and dynamic markings like 'p' (piano). The bass staff contains notes with accents and dynamic markings.

Handwritten musical score for the fourth system. It consists of two staves: a treble clef staff on top and a bass clef staff on the bottom. The treble staff has several measures with complex chordal textures and dynamic markings like 'f' (forte). The bass staff contains notes with accents and dynamic markings, and a 'Pedal' marking with a wavy line.

Handwritten musical score for the first system, featuring three staves. The top staff is in treble clef with a key signature of one sharp (F#) and contains a melodic line with slurs, accents, and triplets. The middle staff is in bass clef with a 2/4 time signature and contains a bass line with slurs and accents. The bottom staff is in bass clef and contains a bass line with slurs and accents. The system concludes with a double bar line and a repeat sign.

Handwritten musical score for the second system, featuring three staves. The top staff is in treble clef with a key signature of one sharp (F#) and contains a melodic line with slurs, accents, and triplets. The middle staff is in bass clef with a 2/4 time signature and contains a bass line with slurs and accents. The bottom staff is in bass clef and contains a bass line with slurs and accents. The system concludes with a double bar line and a repeat sign.

Handwritten musical score for the third system, featuring three staves. The top staff is in treble clef with a key signature of one sharp (F#) and contains a melodic line with slurs, accents, and triplets. The middle staff is in bass clef with a 2/4 time signature and contains a bass line with slurs and accents. The bottom staff is in bass clef and contains a bass line with slurs and accents. The system concludes with a double bar line and a repeat sign.

Handwritten musical score for the fourth system, featuring three staves. The top staff is in treble clef with a key signature of one sharp (F#) and contains a melodic line with slurs, accents, and triplets. The middle staff is in bass clef with a 2/4 time signature and contains a bass line with slurs and accents. The bottom staff is in bass clef and contains a bass line with slurs and accents. The system concludes with a double bar line and a repeat sign.

ruhig (♩) ad lib.

Handwritten musical score for the first system. It consists of three staves: a treble clef staff at the top, a middle treble clef staff, and a bass clef staff at the bottom. The top staff begins with a rest followed by notes with accidentals and slurs. The middle staff has a '2' above it and 'Pedal' written below, with notes and slurs. The bottom staff contains notes with accidentals and slurs. Dynamic markings include 'p' and 'Pedal'.

Handwritten musical score for the second system. It consists of three staves. The top staff has notes with slurs and a dynamic marking 'f'. The middle staff has notes with slurs and a 'Pedal' marking. The bottom staff has notes with slurs. Dynamic markings include 'f' and 'Pedal'.

Handwritten musical score for the third system. It consists of three staves. The top staff has notes with slurs and a dynamic marking 'fp'. The middle staff has notes with slurs and a 'Pedal' marking. The bottom staff has notes with slurs. Dynamic markings include 'fp' and 'Pedal'.

Handwritten musical score for the fourth system. It consists of three staves. The top staff has notes with slurs and a dynamic marking 'p'. The middle staff has notes with slurs and a 'Pedal' marking. The bottom staff has notes with slurs. Dynamic markings include 'p' and 'fp'.

Handwritten musical score for the first system, featuring a flute and piano. The flute part is in treble clef, and the piano part is in bass clef. The score includes dynamic markings such as *p*, *pp*, and *fp*, along with various articulation marks like accents and slurs. The piano part includes a section labeled "Ped." (pedal) and contains complex chordal textures with accidentals.

Handwritten musical score for the second system, continuing the flute and piano parts. The flute part shows a melodic line with a slur and a fermata. The piano part features a complex chordal structure with many accidentals and a section with a vertical line of notes, possibly indicating a tremolo or rapid repetition.

Handwritten musical score for the third system, starting with the tempo marking "frei)". The flute part includes a section with a slur and a fermata, and a section with a slur and a fermata. The piano part features a complex chordal structure with many accidentals and a section with a vertical line of notes, possibly indicating a tremolo or rapid repetition.

Basso clef
Flöte Solo (frei)! (♩)
mf
f
fp
p

Basso clef
p
f

Basso clef
f
p
C
G.P.

Basso clef
Lento
p
pp

Basso clef
(flimmend) Vibrato
pp

Basso clef
Ped.
p (aber deutlich)

Allegretto (accel.) — bis Presto

Handwritten musical score for the first system, measures 1-4. It features three staves with treble and bass clefs. The first staff has a treble clef and a '2' above it. The second staff has a treble clef and a '4' above it. The third staff has a bass clef. Dynamics include 'pp' and 'pp<'. There are various accidentals (flats, naturals) and slurs. A circled '2' is in the third staff at the end of the system.

Handwritten musical score for the second system, measures 5-8. It features three staves with treble and bass clefs. Dynamics include 'f' and 'f<'. The word 'accel.' is written in the second staff. There are various accidentals and slurs.

Handwritten musical score for the third system, measures 9-12. It features three staves with treble and bass clefs. Dynamics include 'f' and 'ff'. The word 'accel.' is written in the second staff. There are various accidentals and slurs.

Handwritten musical score for the fourth system, measures 13-16. It features three staves with treble and bass clefs. The word 'Presto' is written in the second staff. The word 'Pedal' is written in the first staff. There are various accidentals and slurs.

Prestissimo

Handwritten musical score for the first system. It consists of three staves: Treble Clef (top), Bass Clef (middle), and Piano (bottom). The Treble staff begins with a rest, followed by a series of notes with a *pp* dynamic marking. The Bass staff starts with a *ppp* marking and contains a sequence of notes. The Piano staff shows a series of chords. The system concludes with a double bar line.

Handwritten musical score for the second system. It consists of three staves: Treble Clef (top), Bass Clef (middle), and Piano (bottom). The Treble staff has notes with a *p* dynamic marking. The Bass staff has notes with a *p* marking. The Piano staff shows chords with a *p* marking. The system concludes with a double bar line.

Handwritten musical score for the third system. It consists of three staves: Treble Clef (top), Bass Clef (middle), and Piano (bottom). The Treble staff has notes with a *f* dynamic marking. The Bass staff has notes with a *ff* marking. The Piano staff shows chords with a *f* marking. The system concludes with a double bar line.

Handwritten musical score for the fourth system. It consists of three staves: Treble Clef (top), Bass Clef (middle), and Piano (bottom). The Treble staff has notes with a *ff* marking. The Bass staff has notes with a *ff* marking. The Piano staff shows chords with a *ff* marking. The system concludes with a double bar line.