

Sonate (2 Teile)  
für Klavier (Piano)  
Baß  
Schlagzeug (Vibraphon)

Adolf Scherban  
(ad.lib.) mit (Altflöten-Solo!)-

# Mod. (zügig)

PIANO

①

Baß  
+ Schlag

②

Handwritten musical score for *Schreie (2 Teile)* by Adolf Scherbaum. The score is written on three systems of staves. The first system (measures 1-3) is marked with a circled '3'. The second system (measures 4-5) is marked with a circled '4'. The third system (measures 6-7) is marked with a circled '5'. The notation includes various musical symbols such as notes, rests, accidentals, and dynamic markings like 'f' and 'p'.

Handwritten musical score for 'The Rose Tree'. The score is written on ten staves, organized into two systems of five staves each. The notation is in treble and bass clefs, with various musical symbols including notes, rests, and dynamic markings. The score is divided into measures by vertical bar lines. The first system contains measures 1 through 5, and the second system contains measures 6 through 10. The notation is handwritten and includes many annotations and corrections.

9

Handwritten musical score for measures 9 and 10. Measure 9 consists of four measures, each containing a single note on a staff. Measure 10 begins with a treble clef staff containing a melodic line, followed by a bass clef staff with a single note, and a lower staff with rhythmic notation. A circled 'P' and '(frei)' are written below measure 10.

10

11

Handwritten musical score for measures 11 and 12. Measure 11 consists of three measures, each containing a single note on a staff. Measure 12 consists of three measures, each containing a single note on a staff. A circled 'P' and '(frei)' are written below measure 11.



Handwritten musical score for "Schröte (2 Teile)" by Adolf Scherbaum. The score is written on two systems of three staves each. The top staff is in treble clef, the middle in alto clef, and the bottom in bass clef. The key signature has one sharp (F#) and the time signature is 3/4. The first system is marked with a circled "12" at the end. The second system is also marked with a circled "12" at the end. The notation includes various rhythmic values, accidentals, and dynamic markings like "f" and "ff".

12

13

14

Baß Solo

Handwritten musical score for a Bass Solo, BWV 1695. The score is written on four staves in bass clef with a key signature of one sharp (F#). It features complex rhythmic patterns, including triplets and sixteenth notes, with dynamic markings like *p*, *f*, and crescendos. Measure numbers 15 and 16 are circled. The piece concludes with a CODA symbol.



# Schüler 3. Solo

Handwritten musical score for a 3-student solo. The score consists of four staves. The first three staves are for a single melodic line, likely for a violin or flute, with various musical notations including eighth notes, sixteenth notes, and rests. The fourth staff is for a piano accompaniment, featuring a bass line and a treble line with chords and arpeggios. The score is marked with dynamics such as *pp*, *f*, and *p*. The piece concludes with a double bar line and the instruction "D.C. al fine".

Handwritten musical score for a piece titled "Schrade (2 Teile)" by Adolf Scherbaum. The score is written for four staves: Treble Clef (Klavier), Bass Clef (Bass), and two staves for Schlagzeug (Vibraphon) and (auf ihn) mit Affären - Solo.

The score is divided into two main sections, A and B, marked with circled letters. Section A is marked "Leuts" and Section B is marked "Lunga".

The notation includes various musical symbols such as notes, rests, and dynamic markings (p, f, pp, pp). The Schlagzeug part features complex rhythmic patterns, including triplets and sixteenth notes, and is marked with "Pedal" and "f".

The score concludes with a wavy line indicating the end of the piece.

# Teil (2)

oder rasch (fast ♩)

Handwritten musical notation for the first system, featuring two staves:

- Top Staff (Bass):** Labeled "Baß". It contains a melodic line with notes and rests, including a triplet of eighth notes. A bracket spans the final two measures.
- Bottom Staff (Schlagzeug):** Labeled "Schlagzeug". It features a 4/4 time signature, a key signature of one flat (B-flat), and a dynamic marking of  $pp =$ . The notation includes a series of eighth notes, a half note, and a long horizontal line representing a sustained sound or a specific drum pattern.

Handwritten musical notation for the second system, featuring two staves:

- Top Staff (Bass):** Continues the melodic line from the first system, ending with a double bar line. A circled number "1" is written at the end of the staff.
- Bottom Staff (Schlagzeug):** Continues the rhythmic pattern, featuring a triplet of eighth notes in the first measure and a series of eighth notes. A dynamic marking of  $f <$  is present.

Handwritten musical score for Piano and Bass. The score is written on four staves. The top two staves are for the Piano, and the bottom two are for the Bass. The time signature is 3/4. The key signature has one sharp (F#). The score is marked with a circled '2' in the top right corner. The notation includes various musical symbols such as notes, rests, and accidentals.

Adolf Scherbaum: Schöne (2 Teile) für Klavier, Bass, Schlagzeug (Vörschtern) und (am besten) Gitarre - Solo, BWV 1835 (a.d.)

(3)

(4)

(5)



Handwritten musical score for measures 6 and 7. The score is written for three staves: Treble, Bass, and Solo. Measure 6 is marked with a circled '6' in the top right corner. Measure 7 is marked with a circled '7' in the top right corner. The Solo part is marked 'Solo' in the bottom left corner of measure 6. The notation includes various notes, rests, and dynamic markings such as accents (^) and slurs.

Handwritten musical score for measures 8 and 9. The score is written for three staves: Treble, Bass, and Solo. Measure 8 is marked with a circled '8' in the top right corner. Measure 9 is marked with a circled '9' in the top right corner. The Solo part is marked 'Solo' in the bottom left corner of measure 8. The notation includes various notes, rests, and dynamic markings such as accents (^) and slurs.

**Baß**  $p =$

**Schlag**  $p =$

Block (A)

Block

**Solo Piano**  $p =$

Block (A)

*Piano*  $p =$

Block (A)

Block (A)

Handwritten musical score for measures 11 and 12. The upper staff is in treble clef with a key signature of one flat (B-flat). It contains a series of eighth and sixteenth notes, some beamed together, with dynamic markings like  $f$  and  $f=$  and accents. The lower staff is in bass clef and contains a long, continuous wavy line representing a sustained note or a specific performance technique. Measure 12 is circled at the end of the system.

Handwritten musical score for measures 13 and 14. The upper staff is in treble clef with a key signature of one flat (B-flat). It contains a series of eighth and sixteenth notes, some beamed together, with dynamic markings like  $f$  and  $f=$  and accents. The lower staff is in bass clef and contains a long, continuous wavy line representing a sustained note or a specific performance technique. Measure 13 is circled at the end of the system.

Handwritten musical score for measures 14 and 15. The notation is for a piano (p) and a bassoon (B.).

**Measure 14:**

- Piano (p):** Treble clef, key signature of one flat (B-flat). The melody consists of a series of eighth notes: G4, A4, B-flat4, C5, D5, E5, F5, G5, A5, B-flat5, C6, D6, E6, F6, G6, A6, B-flat6, C7, D7, E7, F7, G7, A7, B-flat7, C8, D8, E8, F8, G8, A8, B-flat8, C9, D9, E9, F9, G9, A9, B-flat9, C10, D10, E10, F10, G10, A10, B-flat10, C11, D11, E11, F11, G11, A11, B-flat11, C12, D12, E12, F12, G12, A12, B-flat12, C13, D13, E13, F13, G13, A13, B-flat13, C14, D14, E14, F14, G14, A14, B-flat14, C15, D15, E15, F15, G15, A15, B-flat15, C16, D16, E16, F16, G16, A16, B-flat16, C17, D17, E17, F17, G17, A17, B-flat17, C18, D18, E18, F18, G18, A18, B-flat18, C19, D19, E19, F19, G19, A19, B-flat19, C20, D20, E20, F20, G20, A20, B-flat20, C21, D21, E21, F21, G21, A21, B-flat21, C22, D22, E22, F22, G22, A22, B-flat22, C23, D23, E23, F23, G23, A23, B-flat23, C24, D24, E24, F24, G24, A24, B-flat24, C25, D25, E25, F25, G25, A25, B-flat25, C26, D26, E26, F26, G26, A26, B-flat26, C27, D27, E27, F27, G27, A27, B-flat27, C28, D28, E28, F28, G28, A28, B-flat28, C29, D29, E29, F29, G29, A29, B-flat29, C30, D30, E30, F30, G30, A30, B-flat30, C31, D31, E31, F31, G31, A31, B-flat31, C32, D32, E32, F32, G32, A32, B-flat32, C33, D33, E33, F33, G33, A33, B-flat33, C34, D34, E34, F34, G34, A34, B-flat34, C35, D35, E35, F35, G35, A35, B-flat35, C36, D36, E36, F36, G36, A36, B-flat36, C37, D37, E37, F37, G37, A37, B-flat37, C38, D38, E38, F38, G38, A38, B-flat38, C39, D39, E39, F39, G39, A39, B-flat39, C40, D40, E40, F40, G40, A40, B-flat40, C41, D41, E41, F41, G41, A41, B-flat41, C42, D42, E42, F42, G42, A42, B-flat42, C43, D43, E43, F43, G43, A43, B-flat43, C44, D44, E44, F44, G44, A44, B-flat44, C45, D45, E45, F45, G45, A45, B-flat45, C46, D46, E46, F46, G46, A46, B-flat46, C47, D47, E47, F47, G47, A47, B-flat47, C48, D48, E48, F48, G48, A48, B-flat48, C49, D49, E49, F49, G49, A49, B-flat49, C50, D50, E50, F50, G50, A50, B-flat50, C51, D51, E51, F51, G51, A51, B-flat51, C52, D52, E52, F52, G52, A52, B-flat52, C53, D53, E53, F53, G53, A53, B-flat53, C54, D54, E54, F54, G54, A54, B-flat54, C55, D55, E55, F55, G55, A55, B-flat55, C56, D56, E56, F56, G56, A56, B-flat56, C57, D57, E57, F57, G57, A57, B-flat57, C58, D58, E58, F58, G58, A58, B-flat58, C59, D59, E59, F59, G59, A59, B-flat59, C60, D60, E60, F60, G60, A60, B-flat60, C61, D61, E61, F61, G61, A61, B-flat61, C62, D62, E62, F62, G62, A62, B-flat62, C63, D63, E63, F63, G63, A63, B-flat63, C64, D64, E64, F64, G64, A64, B-flat64, C65, D65, E65, F65, G65, A65, B-flat65, C66, D66, E66, F66, G66, A66, B-flat66, C67, D67, E67, F67, G67, A67, B-flat67, C68, D68, E68, F68, G68, A68, B-flat68, C69, D69, E69, F69, G69, A69, B-flat69, C70, D70, E70, F70, G70, A70, B-flat70, C71, D71, E71, F71, G71, A71, B-flat71, C72, D72, E72, F72, G72, A72, B-flat72, C73, D73, E73, F73, G73, A73, B-flat73, C74, D74, E74, F74, G74, A74, B-flat74, C75, D75, E75, F75, G75, A75, B-flat75, C76, D76, E76, F76, G76, A76, B-flat76, C77, D77, E77, F77, G77, A77, B-flat77, C78, D78, E78, F78, G78, A78, B-flat78, C79, D79, E79, F79, G79, A79, B-flat79, C80, D80, E80, F80, G80, A80, B-flat80, C81, D81, E81, F81, G81, A81, B-flat81, C82, D82, E82, F82, G82, A82, B-flat82, C83, D83, E83, F83, G83, A83, B-flat83, C84, D84, E84, F84, G84, A84, B-flat84, C85, D85, E85, F85, G85, A85, B-flat85, C86, D86, E86, F86, G86, A86, B-flat86, C87, D87, E87, F87, G87, A87, B-flat87, C88, D88, E88, F88, G88, A88, B-flat88, C89, D89, E89, F89, G89, A89, B-flat89, C90, D90, E90, F90, G90, A90, B-flat90, C91, D91, E91, F91, G91, A91, B-flat91, C92, D92, E92, F92, G92, A92, B-flat92, C93, D93, E93, F93, G93, A93, B-flat93, C94, D94, E94, F94, G94, A94, B-flat94, C95, D95, E95, F95, G95, A95, B-flat95, C96, D96, E96, F96, G96, A96, B-flat96, C97, D97, E97, F97, G97, A97, B-flat97, C98, D98, E98, F98, G98, A98, B-flat98, C99, D99, E99, F99, G99, A99, B-flat99, C100, D100, E100, F100, G100, A100, B-flat100, C101, D101, E101, F101, G101, A101, B-flat101, C102, D102, E102, F102, G102, A102, B-flat102, C103, D103, E103, F103, G103, A103, B-flat103, C104, D104, E104, F104, G104, A104, B-flat104, C105, D105, E105, F105, G105, A105, B-flat105, C106, D106, E106, F106, G106, A106, B-flat106, C107, D107, E107, F107, G107, A107, B-flat107, C108, D108, E108, F108, G108, A108, B-flat108, C109, D109, E109, F109, G109, A109, B-flat109, C110, D110, E110, F110, G110, A110, B-flat110, C111, D111, E111, F111, G111, A111, B-flat111, C112, D112, E112, F112, G112, A112, B-flat112, C113, D113, E113, F113, G113, A113, B-flat113, C114, D114, E114, F114, G114, A114, B-flat114, C115, D115, E115, F115, G115, A115, B-flat115, C116, D116, E116, F116, G116, A116, B-flat116, C117, D117, E117, F117, G117, A117, B-flat117, C118, D118, E118, F118, G118, A118, B-flat118, C119, D119, E119, F119, G119, A119, B-flat119, C120, D120, E120, F120, G120, A120, B-flat120, C121, D121, E121, F121, G121, A121, B-flat121, C122, D122, E122, F122, G122, A122, B-flat122, C123, D123, E123, F123, G123, A123, B-flat123, C124, D124, E124, F124, G124, A124, B-flat124, C125, D125, E125, F125, G125, A125, B-flat125, C126, D126, E126, F126, G126, A126, B-flat126, C127, D127, E127, F127, G127, A127, B-flat127, C128, D128, E128, F128, G128, A128, B-flat128, C129, D129, E129, F129, G129, A129, B-flat129, C130, D130, E130, F130, G130, A130, B-flat130, C131, D131, E131, F131, G131, A131, B-flat131, C132, D132, E132, F132, G132, A132, B-flat132, C133, D133, E133, F133, G133, A133, B-flat133, C134, D134, E134, F134, G134, A134, B-flat134, C135, D135, E135, F135, G135, A135, B-flat135, C136, D136, E136, F136, G136, A136, B-flat136, C137, D137, E137, F137, G137, A137, B-flat137, C138, D138, E138, F138, G138, A138, B-flat138, C139, D139, E139, F139, G139, A139, B-flat139, C140, D140, E140, F140, G140, A140, B-flat140, C141, D141, E141, F141, G141, A141, B-flat141, C142, D142, E142, F142, G142, A142, B-flat142, C143, D143, E143, F143, G143, A143, B-flat143, C144, D144, E144, F144, G144, A144, B-flat144, C145, D145, E145, F145, G145, A145, B-flat145, C146, D146, E146, F146, G146, A146, B-flat146, C147, D147, E147, F147, G147, A147, B-flat147, C148, D148, E148, F148, G148, A148, B-flat148, C149, D149, E149, F149, G149, A149, B-flat149, C150, D150, E150, F150, G150, A150, B-flat150, C151, D151, E151, F151, G151, A151, B-flat151, C152, D152, E152, F152, G152, A152, B-flat152, C153, D153, E153, F153, G153, A153, B-flat153, C154, D154, E154, F154, G154, A154, B-flat154, C155, D155, E155, F155, G155, A155, B-flat155, C156, D156, E156, F156, G156, A156, B-flat156, C157, D157, E157, F157, G157, A157, B-flat157, C158, D158, E158, F158, G158, A158, B-flat158, C159, D159, E159, F159, G159, A159, B-flat159, C160, D160, E160, F160, G160, A160, B-flat160, C161, D161, E161, F161, G161, A161, B-flat161, C162, D162, E162, F162, G162, A162, B-flat162, C163, D163, E163, F163, G163, A163, B-flat163, C164, D164, E164, F164, G164, A164, B-flat164, C165, D165, E165, F165, G165, A165, B-flat165, C166, D166, E166, F166, G166, A166, B-flat166, C167, D167, E167, F167, G167, A167, B-flat167, C168, D168, E168, F168, G168, A168, B-flat168, C169, D169, E169, F169, G169, A169, B-flat169, C170, D170, E170, F170, G170, A170, B-flat170, C171, D171, E171, F171, G171, A171, B-flat171, C172, D172, E172, F172, G172, A172, B-flat172, C173, D173, E173, F173, G173, A173, B-flat173, C174, D174, E174, F174, G174, A174, B-flat174, C175, D175, E175, F175, G175, A175, B-flat175, C176, D176, E176, F176, G176, A176, B-flat176, C177, D177, E177, F177, G177, A177, B-flat177, C178, D178, E178, F178, G178, A178, B-flat178, C179, D179, E179, F179, G179, A179, B-flat179, C180, D180, E180, F180, G180, A180, B-flat180, C181, D181, E181, F181, G181, A181, B-flat181, C182, D182, E182, F182, G182, A182, B-flat182, C183, D183, E183, F183, G183, A183, B-flat183, C184, D184, E184, F184, G184, A184, B-flat184, C185, D185, E185, F185, G185, A185, B-flat185, C186, D186, E186, F186, G186, A186, B-flat186, C187, D187, E187, F187, G187, A187, B-flat187, C188, D188, E188, F188, G188, A188, B-flat188, C189, D189, E189, F189, G189, A189, B-flat189, C190, D190, E190, F190, G190, A190, B-flat190, C191, D191, E191, F191, G191, A191, B-flat191, C192, D192, E192, F192, G192, A192, B-flat192, C193, D193, E193, F193, G193, A193, B-flat193, C194, D194, E194, F194, G194, A194, B-flat194, C195, D195, E195, F195, G195, A195, B-flat195, C196, D196, E196, F196, G196, A196, B-flat196, C197, D197, E197, F197, G197, A197, B-flat197, C198, D198, E198, F198, G198, A198, B-flat198, C199, D199, E199, F199, G199, A199, B-flat199, C200, D200, E200, F200, G200, A200, B-flat200, C201, D201, E201, F201, G201, A201, B-flat201, C202, D202, E202, F202, G202, A202, B-flat202, C203, D203, E203, F203, G203, A203, B-flat203, C204, D204, E204, F204, G204, A204, B-flat204, C205, D205, E205, F205, G205, A205, B-flat205, C206, D206, E206, F206, G206, A206, B-flat206, C207, D207, E207, F207, G207, A207, B-flat207, C208, D208, E208, F208, G208, A208, B-flat208, C209, D209, E209, F209, G209, A209, B-flat209, C210, D210, E210, F210, G210, A210, B-flat210, C211, D211, E211, F211, G211, A211, B-flat211, C212, D212, E212, F212, G212, A212, B-flat212, C213, D213, E213, F213, G213, A213, B-flat213, C214, D214, E214, F214, G214, A214, B-flat214, C215, D215, E215, F215, G215, A215, B-flat215, C216, D216, E216, F216, G216, A216, B-flat216, C217, D217, E217, F217, G217, A217, B-flat217, C218, D218, E218, F218, G218, A218, B-flat218, C219, D219, E219, F219, G219, A219, B-flat219, C220, D220, E220, F220, G220, A220, B-flat220, C221, D221, E221, F221, G221, A221, B-flat221, C222, D222, E222, F222, G222, A222, B-flat222, C223, D223, E223, F223, G223, A223, B-flat223, C224, D224, E224, F224, G224, A224, B-flat224, C225, D225, E225, F225, G225, A225, B-flat225, C226, D226, E226, F226, G226, A226, B-flat226, C227, D227, E227, F227, G227, A227, B-flat227, C228, D228, E228, F228, G228, A228, B-flat228, C229, D229, E229, F229, G229, A229, B-flat229, C230, D230, E230, F230, G230, A230, B-flat230, C231, D231, E231, F231, G231, A231, B-flat231, C232, D232, E232, F232, G232, A232, B-flat232, C233, D233, E233, F233, G233, A233, B-flat233, C234, D234, E234, F234, G234, A234, B-flat234, C235, D235, E235, F235, G235, A235, B-flat235, C236, D236, E236, F236, G236, A236, B-flat236, C237, D237, E237, F237, G237, A237, B-flat237, C238, D238, E238, F238, G238, A238, B-flat238, C239, D239, E239, F239, G239, A239, B-flat239, C240, D240, E240, F240, G240, A240, B-flat240, C241, D241, E241, F241, G241, A241, B-flat241, C242, D242, E242, F242, G242, A242, B-flat242, C243, D243, E243, F243, G243, A243, B-flat243, C244, D244, E244, F244, G244, A244, B-flat244, C245, D245, E245, F245, G245, A245, B-flat245, C246, D246, E246, F246, G246, A246, B-flat246, C247, D247, E247, F247, G247, A247, B-flat247, C248, D248, E248, F248, G248, A248, B-flat248, C249, D249, E249, F249, G249, A249, B-flat249, C250, D250, E250, F250, G250, A250, B-flat250, C251, D251, E251, F251, G251, A251, B-flat251, C252, D252, E252, F252, G252, A252, B-flat252, C253, D253, E253, F253, G253, A253, B-flat253, C254, D254, E254, F254, G254, A254, B-flat254, C255, D255, E255, F255, G255, A255, B-flat255, C256, D256, E256, F256, G256, A256, B-flat256, C257, D257, E257, F257, G257, A257, B-flat257, C258, D258, E258, F258, G258, A258, B-flat258, C259, D259, E259, F259, G259, A259, B-flat259, C260, D260, E260, F260, G260, A260, B-flat260, C261, D261, E261, F261, G261, A261, B-flat261, C262, D262, E262, F262, G262, A262, B-flat262, C263, D263, E263, F263, G263, A263, B-flat263, C264, D264, E264, F264, G264, A264, B-flat264, C265, D265, E265, F265, G265, A265, B-flat265, C266, D266, E266, F266, G266, A266, B-flat266, C267, D267, E267, F267, G267, A267, B-flat267, C268, D268, E268, F268, G268, A268, B-flat268, C269, D269, E269, F269, G269, A269, B-flat269, C270, D270, E270, F270, G270, A270, B-flat270, C271, D271, E271, F271, G271, A271, B-flat271, C272, D272, E272, F272, G272, A272, B-flat272, C273, D273, E273, F273, G273, A273, B-flat273, C274, D274, E274, F274, G274, A274, B-flat274, C275, D275, E275, F275, G275, A275, B-flat275, C276, D276, E276, F276, G276, A276, B-flat276, C277, D277, E277, F277, G277, A277, B-flat277, C278, D278, E278, F278, G278, A278, B-flat278, C279, D279, E279, F279, G279, A279, B-flat279, C280, D280, E280, F280, G280, A280, B-flat280, C281, D281, E281, F281, G281, A281, B-flat281, C282, D282, E282, F282, G282, A282, B-flat282, C283, D283, E283, F283, G283, A283, B-flat283, C284, D284, E284, F284, G284, A284, B-flat284, C285, D285, E285, F285, G285, A285, B-flat285, C286, D286, E286, F286, G286, A286, B-flat286, C287, D287, E287, F287, G287, A287, B-flat287, C288, D288, E288, F288, G288, A288, B-flat288, C289, D289, E289, F289, G289, A289, B-flat289, C290, D290, E290, F290, G290, A290, B-flat290, C291, D291, E291, F291, G291, A291, B-flat291, C292, D292, E292, F292, G292, A292, B-flat292, C293, D293, E293, F293, G293, A293, B-flat293, C294, D294, E294, F294, G294, A294, B-flat294, C295, D295, E295, F295, G295, A295, B-flat295, C296, D296, E296, F296, G296, A296, B-flat296, C297, D297, E297, F297, G297, A297, B-flat297, C298, D298, E298, F298, G298, A298, B-flat298, C299, D299, E299, F299, G299, A299, B-flat299, C300, D300, E300, F300, G300, A300, B-flat300, C301, D301, E301, F301, G301, A301, B-flat301, C302, D302, E302, F302, G302, A302, B-flat302, C303, D303, E303, F303, G303, A303, B-flat303, C304, D304, E304, F304, G304, A304, B-flat304, C305, D305, E305, F305, G305, A305, B-flat305, C306, D306, E306, F306, G306, A306, B-flat306, C307, D307, E307, F307, G307, A307, B-flat307, C308, D308, E308, F308, G308, A308, B-flat308, C309, D309, E309, F309, G309, A309, B-flat309, C310, D310, E310, F310, G310, A310, B-flat310, C311, D311, E311, F311, G311, A311, B-flat311, C312, D312, E312, F312, G312, A312, B-flat312, C313, D313, E313, F313, G313, A313, B-flat313, C314, D314, E314, F314, G314, A314, B-flat314, C315, D315, E315, F315, G315, A315, B-flat315, C316, D316, E316, F316, G316, A316, B-flat316, C317, D317, E317, F317, G317, A317, B-flat317, C318, D318, E318, F318, G318, A318, B-flat318, C319, D319, E319, F319, G319, A319, B-flat319, C320, D320, E320, F320, G320, A320, B-flat320, C321, D321, E321, F321, G321, A321, B-flat321, C322, D322, E322, F322, G322, A322, B-flat322, C323, D323, E323, F323, G323, A323, B-flat323, C324, D324, E324, F324, G324, A324, B-flat324, C325, D325, E325, F325, G325, A325, B-flat325, C326, D326, E326, F326, G326, A326, B-flat326, C327, D327, E327, F327, G327, A327, B-flat327, C328, D328, E328, F328, G328, A328, B-flat328, C329, D329, E329, F329, G329, A329, B-flat329, C330, D330, E330, F330, G330, A330, B-flat330, C331, D331, E331, F331, G331, A331, B-flat331, C332, D332, E332, F332, G332, A332, B-flat332, C333, D333, E333, F333, G333, A333, B-flat333, C334, D334, E334, F334, G334, A334, B-flat334, C335, D335, E335, F335, G335, A335, B-flat335, C336, D336, E336, F336, G336, A336, B-flat336, C337, D337, E337, F337, G337, A337, B-flat337, C338, D338, E338, F338, G338, A338, B-flat338, C339, D339, E339, F339, G339, A339, B-flat339, C340, D340, E340, F340, G340, A340, B-flat340, C341, D341, E341, F341, G341, A341, B-flat341, C342, D342, E342, F342, G342, A342, B-flat342, C343, D343, E343, F343, G343, A343, B-flat343, C344, D344, E344, F344, G344, A344, B-flat344, C345, D345, E345, F345, G345, A345, B-flat345, C346, D346, E346, F346, G346, A346, B-flat346, C347, D347, E347, F347, G347, A347, B-flat347, C348, D348, E348, F348, G348, A348, B-flat348, C349, D349, E349, F349, G349, A349, B-flat349, C350, D350, E350, F350, G350, A350, B-flat350, C351, D351, E351, F351, G351, A351, B-flat351, C352, D352, E352, F352, G352, A352, B-flat352, C353, D353, E353, F353, G353, A353, B-flat353, C354, D354, E354, F354, G354, A354, B-flat354, C355, D355, E355, F355, G355, A355, B-flat355, C356, D356, E356, F356, G356, A356, B-flat356, C357, D357, E357, F357, G357, A357, B-flat357, C358, D358, E358, F358, G358, A358, B-flat358, C359, D359, E359, F359, G359, A359, B-flat359, C360, D360, E360, F360, G360, A360, B-flat360, C361, D361, E361, F361, G361, A361, B-flat361, C362, D362, E362, F362, G362, A362, B-flat362, C363, D363, E363, F363, G363, A363, B-flat363, C364, D364, E364, F364, G364, A364, B-flat364,



Handwritten musical score for measures 14-16. The system includes three staves: Treble, Bass, and a lower staff labeled "Bl.A".

Measure 14: Treble staff has a treble clef and a key signature of one sharp (F#). The Bass staff has a bass clef and a key signature of one sharp (F#). The lower staff "Bl.A" has a treble clef and a key signature of one sharp (F#).

Measure 15: Treble staff has a treble clef and a key signature of one sharp (F#). The Bass staff has a bass clef and a key signature of one sharp (F#). The lower staff "Bl.A" has a treble clef and a key signature of one sharp (F#).

Measure 16: Treble staff has a treble clef and a key signature of one sharp (F#). The Bass staff has a bass clef and a key signature of one sharp (F#). The lower staff "Bl.A" has a treble clef and a key signature of one sharp (F#).

Handwritten musical score for measures 17-20. The system includes three staves: Treble, Bass, and a lower staff labeled "Bl.A".

Measure 17: Treble staff has a treble clef and a key signature of one sharp (F#). The Bass staff has a bass clef and a key signature of one sharp (F#). The lower staff "Bl.A" has a treble clef and a key signature of one sharp (F#).

Measure 18: Treble staff has a treble clef and a key signature of one sharp (F#). The Bass staff has a bass clef and a key signature of one sharp (F#). The lower staff "Bl.A" has a treble clef and a key signature of one sharp (F#).

Measure 19: Treble staff has a treble clef and a key signature of one sharp (F#). The Bass staff has a bass clef and a key signature of one sharp (F#). The lower staff "Bl.A" has a treble clef and a key signature of one sharp (F#).

Measure 20: Treble staff has a treble clef and a key signature of one sharp (F#). The Bass staff has a bass clef and a key signature of one sharp (F#). The lower staff "Bl.A" has a treble clef and a key signature of one sharp (F#).

Handwritten musical score for measures 18 and 19. The score is written on a grand staff (treble and bass clefs) with a key signature of one sharp (F#). Measure 18 features a complex, dense texture with many notes and rests, including a large, stylized 'X' mark. Measure 19 shows a continuation of the texture, with a large, stylized 'X' mark. The bottom staff contains a long, continuous line, possibly representing a bass line or a pedal point.

Handwritten musical score for measures 20 and 21. The score is written on a grand staff (treble and bass clefs) with a key signature of one sharp (F#). Measure 20 features a complex, dense texture with many notes and rests, including a large, stylized 'X' mark. Measure 21 shows a continuation of the texture, with a large, stylized 'X' mark. The bottom staff contains a long, continuous line, possibly representing a bass line or a pedal point.

1. + 2. + 3.

Schlagg. Solo (frei)

1 2 3 4 5

6 7 8 9

10 11 13 14

> din

15 16

> p >

nur (26x guttural...)

21

D.C. CODA

*ruhig (frei)*

Baß // 0: 3/4

Solo *p* *p* =

(22)

(23)

*ff*

(24)

*f* <

(25)

*p* > *paroxit*

Flöte (freigestalten / richtig notiert)

Flöte 3

Bass 4

Schlags.  
Vibraphon  
pp  
(Pedal)

ganz frei



Handwritten musical score for "Scherzo (2 Teile)" by Adolf Scherbaum. The score is written on three staves: Treble, Bass, and Schlagzeug (Drum). It features measures 23 and 24. Measure 23 shows a complex rhythmic pattern in the Treble staff with a forte (f) dynamic, a bass line with a forte (f) dynamic, and a drum part with a forte (f) dynamic. Measure 24 shows a continuation of the Treble staff pattern, a bass line with a forte (f) dynamic, and a drum part with a forte (f) dynamic. The score is marked with various musical notations including notes, rests, and dynamics.

Handwritten musical score for three staves (Treble, Bass, and Cello/Double Bass). The score is divided into measures 25 and 26.

**Measure 25:** Marked "ruhig (d)". The Treble staff contains a complex melodic line with many accidentals and slurs. The Bass staff contains a similar complex line. The Cello/Double Bass staff contains a simpler line with slurs and accents.

**Measure 26:** The Treble staff continues the complex melodic line. The Bass staff contains a simpler line with slurs and accents. The Cello/Double Bass staff contains a line with slurs and accents.

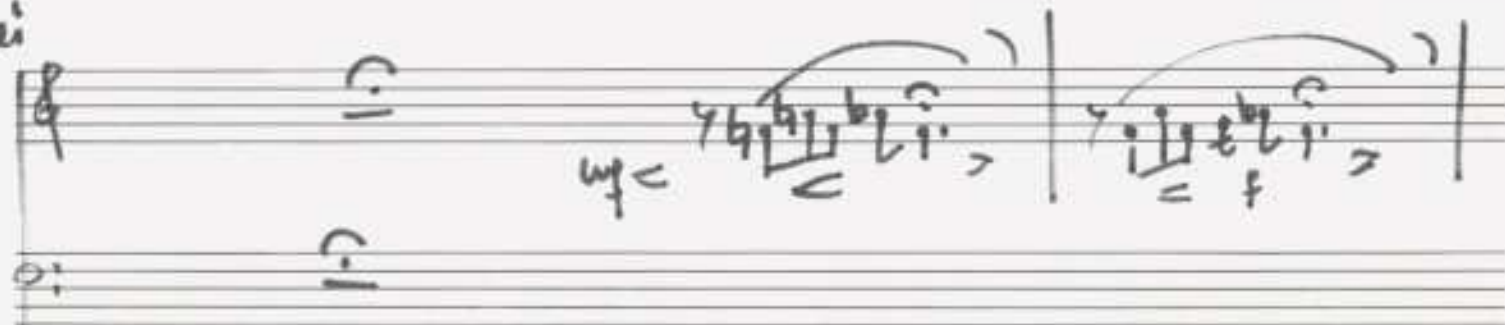
**Measure 27:** Marked "Letztens 4 Takte mehrmals". The Treble staff contains a complex melodic line. The Bass staff contains a simpler line with slurs and accents. The Cello/Double Bass staff contains a line with slurs and accents.

Handwritten annotations include "Pedal" and "Pedal pp=" in the Bass staff, and "Letztens 4 Takte mehrmals" in the Cello/Double Bass staff.

Handwritten musical score for "Der Schwanensee" by Tchaikovsky, measures 28-29. The score is for piano and includes a pedal part. The key signature is one flat (B-flat major/D minor). The time signature is 4/4. The score shows a melodic line in the right hand, a bass line in the left hand, and a pedal line. Measure 28 ends with a double bar line and a repeat sign. Measure 29 begins with a double bar line and a repeat sign. The score is annotated with "letzten 4 Takte machmals" and "Pedale".

Handwritten musical score for Scherzo (2 Teile) for Piano, Bass, and Snare Drum. The score is written on three staves. The top staff is for the Piano, the middle for the Bass, and the bottom for the Snare Drum. The score is divided into measures, with measure numbers 30, 34, 32, and 33 circled. The score includes various musical notations such as notes, rests, and dynamic markings like 'p' and 'pp'. There are also handwritten annotations in German, including 'Schmer' and 'Pedal'. The score is dated 2010 and includes a copyright notice for Inga Adamkiewicz-Scherbaum.

frei



**CODA**

**Piano**

**Bass**

**Schlagz.**

**Kleine G.P.**

**4x (sempre dim / bis ppp)**



Witz (frei) ad. lib.

Handwritten musical score for three parts: Pedal, Bass, and Schlag (Drum).

**Pedal:** The notation shows a series of chords and notes, including a large bracketed section with a double bar line and a repeat sign. The notes are written in a stylized, handwritten manner.

**Bass:** The notation shows a series of notes and rests, with a large bracketed section and a double bar line. The notes are written in a stylized, handwritten manner.

**Schlag:** The notation shows a series of notes and rests, with a large bracketed section and a double bar line. The notes are written in a stylized, handwritten manner.

**Annotations:**

- Witz (frei) ad. lib.** (Handwritten at the top left)
- Pedal** (Handwritten next to the first staff)
- Bass** (Handwritten next to the second staff)
- Schlag** (Handwritten next to the third staff)
- freies Solo mit hartem Abschlus** (Handwritten in the middle of the third staff)
- Adolf Scherbaum** (Handwritten signature at the bottom right)