

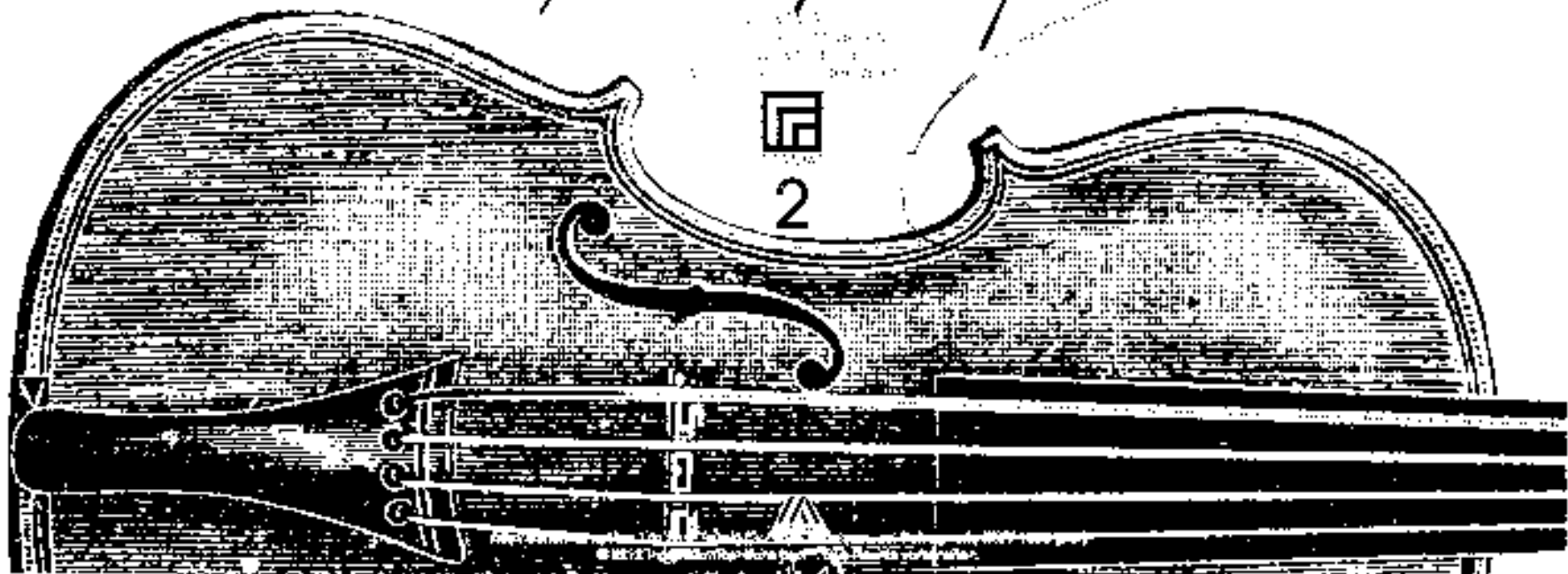
# MUSIK

of the  
of the  
of the

*Altes Trio / Adolf Schubert*



2



Trio (in 3 Teilen)

für Piano / Solo Bass  
und Schlagwerk)

Adolf Koberger

Gewandhaus "Fliese"

Mod. amai (sehr rasch  $\frac{3}{4}$ ) 1

Piano

Handwritten musical score for Piano and Bass Drum. The score is in 3/4 time and consists of four measures. The Piano part is written on a grand staff (treble and bass clefs). The Bass Drum part is written on a single staff below the piano part. The first measure is marked with a piano (*p*) dynamic and a fermata. The second measure is marked with a circled 'A' above it. The third measure is marked with a fermata. The fourth measure is marked with a fermata. The Bass Drum part consists of a series of rhythmic patterns: a dotted quarter note followed by an eighth note in the first measure; a dotted quarter note followed by an eighth note in the second measure; a dotted quarter note followed by an eighth note in the third measure; and a dotted quarter note followed by an eighth note in the fourth measure. The piano part features chords and melodic lines with various dynamics and articulations.

Bass  
Schlagz.

Handwritten musical score for Piano and Bass Drum. The score is in 3/4 time and consists of four measures. The Piano part is written on a grand staff (treble and bass clefs). The Bass Drum part is written on a single staff below the piano part. The first measure is marked with a piano (*p*) dynamic and a fermata. The second measure is marked with a circled 'A' above it. The third measure is marked with a fermata. The fourth measure is marked with a fermata. The Bass Drum part consists of a series of rhythmic patterns: a dotted quarter note followed by an eighth note in the first measure; a dotted quarter note followed by an eighth note in the second measure; a dotted quarter note followed by an eighth note in the third measure; and a dotted quarter note followed by an eighth note in the fourth measure. The piano part features chords and melodic lines with various dynamics and articulations.

2

Handwritten musical score for the first system. It consists of four staves. The top staff has a treble clef and contains a melodic line with various notes and rests, including a large slur over the first two measures. The second staff has a bass clef and contains a bass line with notes and rests. The third and fourth staves are also present, with the fourth staff containing some handwritten text that appears to be "alle lu". Dynamic markings include "ff" in the first measure and "p" in the second measure.

3

Handwritten musical score for the second system. It consists of four staves. The top staff has a treble clef and contains a melodic line with various notes and rests, including a large slur over the first two measures. The second staff has a bass clef and contains a bass line with notes and rests. The third and fourth staves are also present. Dynamic markings include "p" in the first measure and "ff" in the second measure.

2-2-0

BaB

p =

2

④

Handwritten musical score for system 4, measures 1-4. The system consists of three staves. The top staff is a treble clef with a key signature of one sharp (F#) and a common time signature. It contains a melodic line with eighth and sixteenth notes, slurs, and accents. The middle staff is a bass clef with a common time signature, containing a bass line with quarter and eighth notes. The bottom staff is a bass clef with a common time signature, containing a bass line with quarter and eighth notes. A dynamic marking 'f' is present in the first measure of the top staff.

⑤

Handwritten musical score for system 5, measures 1-4. The system consists of three staves. The top staff is a treble clef with a key signature of one sharp (F#) and a common time signature. It contains a melodic line with eighth and sixteenth notes, slurs, and accents. The middle staff is a bass clef with a common time signature, containing a bass line with quarter and eighth notes. The bottom staff is a bass clef with a common time signature, containing a bass line with quarter and eighth notes. A dynamic marking 'f' is present in the first measure of the top staff.

Handwritten musical score, system 1. The score is written on three staves. The top staff contains a melodic line with a circled '6' at the beginning and the word 'all.?' written above it. The middle staff contains a bass line with a circled '2' at the end. The bottom staff contains a bass line with a circled '2' at the end. The music is in a key with one sharp (F#) and a common time signature. The tempo is marked 'alleg.' and 'sehr rasch'. The score includes various musical notations such as notes, rests, and dynamic markings.

Handwritten musical score, system 2. The score is written on three staves. The top staff contains a melodic line with a circled '8' at the end. The middle staff contains a bass line with a circled '2' at the end. The bottom staff contains a bass line with a circled '2' at the end. The music is in a key with one sharp (F#) and a common time signature. The score includes various musical notations such as notes, rests, and dynamic markings.



Handwritten musical score for guitar, system 1. The score is written on three staves. The top staff has a treble clef and a key signature of one sharp (F#). The middle staff has a bass clef and a key signature of three sharps (F#, C#, G#). The bottom staff has a bass clef and a key signature of three sharps (F#, C#, G#). The piece is in 4/4 time, indicated by a '4' in a circle on the bottom staff. The first measure of the top staff contains a whole note chord with notes G, A, B, C, D, E, F#. The second measure of the top staff contains a whole note chord with notes G, A, B, C, D, E, F#. The third measure of the top staff contains a whole note chord with notes G, A, B, C, D, E, F#. The fourth measure of the top staff contains a whole note chord with notes G, A, B, C, D, E, F#. The first measure of the middle staff contains a whole note chord with notes G, A, B, C, D, E, F#. The second measure of the middle staff contains a whole note chord with notes G, A, B, C, D, E, F#. The third measure of the middle staff contains a whole note chord with notes G, A, B, C, D, E, F#. The fourth measure of the middle staff contains a whole note chord with notes G, A, B, C, D, E, F#. The first measure of the bottom staff contains a whole note chord with notes G, A, B, C, D, E, F#. The second measure of the bottom staff contains a whole note chord with notes G, A, B, C, D, E, F#. The third measure of the bottom staff contains a whole note chord with notes G, A, B, C, D, E, F#. The fourth measure of the bottom staff contains a whole note chord with notes G, A, B, C, D, E, F#. The piece ends with a circled number '24' at the end of the system.

Handwritten annotations include "A" above the first measure of the top staff, "Bass" written vertically on the left side of the middle staff, and "Solo" written vertically on the left side of the bottom staff. There are also some scribbles and markings on the staves.

Handwritten musical score for guitar, system 2. The score is written on three staves. The top staff has a treble clef and a key signature of one sharp (F#). The middle staff has a bass clef and a key signature of three sharps (F#, C#, G#). The bottom staff has a bass clef and a key signature of three sharps (F#, C#, G#). The piece is in 4/4 time, indicated by a '4' in a circle on the bottom staff. The first measure of the top staff contains a whole note chord with notes G, A, B, C, D, E, F#. The second measure of the top staff contains a whole note chord with notes G, A, B, C, D, E, F#. The third measure of the top staff contains a whole note chord with notes G, A, B, C, D, E, F#. The fourth measure of the top staff contains a whole note chord with notes G, A, B, C, D, E, F#. The first measure of the middle staff contains a whole note chord with notes G, A, B, C, D, E, F#. The second measure of the middle staff contains a whole note chord with notes G, A, B, C, D, E, F#. The third measure of the middle staff contains a whole note chord with notes G, A, B, C, D, E, F#. The fourth measure of the middle staff contains a whole note chord with notes G, A, B, C, D, E, F#. The first measure of the bottom staff contains a whole note chord with notes G, A, B, C, D, E, F#. The second measure of the bottom staff contains a whole note chord with notes G, A, B, C, D, E, F#. The third measure of the bottom staff contains a whole note chord with notes G, A, B, C, D, E, F#. The fourth measure of the bottom staff contains a whole note chord with notes G, A, B, C, D, E, F#. The piece ends with a circled number '22' at the end of the system.

Handwritten annotations include "A" above the first measure of the top staff, "Solo" written vertically on the left side of the bottom staff, and "Solo" written vertically on the left side of the bottom staff. There are also some scribbles and markings on the staves.



Solo Solo

Sub Solo

Andante tempo

Handwritten musical notation on a single staff, circled with the number 15. The notation includes a treble clef, a key signature of one sharp (F#), and a common time signature (C). The notes are: F#4, G4, A4, B4, C5, B4, A4, G4, F#4, E4, D4, C4. There are dynamic markings: *ff* with an accent (>) under the first two notes, and accents (>) under the last two notes.

*( sempre da in trit. ... )*

Handwritten musical score for three staves, circled with the number 16. The staves are labeled on the left as *Piano*, *Clav*, and *Solo*. The score is divided into four measures by vertical bar lines. The *Piano* staff has notes with various dynamics and accents. The *Clav* staff has notes with dynamics. The *Solo* staff has a rhythmic pattern of eighth notes. There are many handwritten annotations, including slurs, accents, and dynamic markings.

*sempre da in (3-4x) //: //*

bei pedaling -

Pedal

mit

♯1 ♯2 ♯3 ♯4 ♯5

① >

ppp

The image shows a handwritten musical score for piano. It consists of four staves. The top staff has a treble clef and a key signature of one sharp (F#). The notes are: F#4, G4, A4, B4, C5. Above the staff, there are handwritten annotations: "bei pedaling -" and "mit". Below the staff, there are five sharp signs (#) numbered 1 through 5. The second staff has a bass clef and contains a whole note chord consisting of F#3, C4, and G3. The third staff has a bass clef and contains a whole note chord consisting of F#3, C4, and G3. The fourth staff has a bass clef and contains a whole note chord consisting of F#3, C4, and G3. There is a circled "1" with a greater-than sign (>) to the left of the fourth staff. A double bar line is present at the end of the first staff, followed by a wavy line indicating a tremolo or rapid oscillation. The word "ppp" is written below the fourth staff.

2

PiANO (Paci) Solo (Solo) Solo (Solo)

Handwritten musical notation for the first system, measures 1-3. The top staff is in treble clef and the bottom in bass clef. Measure 1 has a 4/4 time signature. Measure 2 has a circled '1' above it. Measure 3 has a circled '1' above it. The music features various notes, rests, and dynamic markings like accents and slurs.

2

3

Handwritten musical notation for the second system, measures 4-7. The top staff is in treble clef and the bottom in bass clef. Measure 4 has a circled '2' above it. Measure 5 has a circled '2' above it. Measure 6 has a circled '2' above it. Measure 7 has a circled '3' above it. The music features various notes, rests, and dynamic markings like accents and slurs. The word "FINE" is written at the end of the system.

ending

Handwritten musical score for guitar, featuring a vocal line and guitar accompaniment. The score is divided into two systems, each with four measures. The first system is marked with a circled 4 and the second with a circled 5. The guitar part includes fretboard diagrams and chord symbols. The vocal line is written in a single staff with a treble clef and a common time signature. The guitar part is written in a single staff with a treble clef and a common time signature. The score includes various musical notations such as notes, rests, and dynamic markings.

**System 1 (Measures 1-4):**

- Measure 1:** Vocal line starts with a quarter note G4, followed by quarter notes A4, B4, and C5. Guitar accompaniment features a series of eighth notes on the first string (E4, F4, G4, A4, B4, C5).
- Measure 2:** Vocal line continues with quarter notes D5, E5, and F5. Guitar accompaniment features a series of eighth notes on the first string (D5, E5, F5, G5, A5, B5).
- Measure 3:** Vocal line continues with quarter notes G5, A5, and B5. Guitar accompaniment features a series of eighth notes on the first string (G5, A5, B5, C6, D6, E6).
- Measure 4:** Vocal line ends with a quarter note C6. Guitar accompaniment features a series of eighth notes on the first string (C6, D6, E6, F6, G6, A6).

**System 2 (Measures 5-8):**

- Measure 5:** Vocal line starts with a quarter note G4, followed by quarter notes A4, B4, and C5. Guitar accompaniment features a series of eighth notes on the first string (E4, F4, G4, A4, B4, C5).
- Measure 6:** Vocal line continues with quarter notes D5, E5, and F5. Guitar accompaniment features a series of eighth notes on the first string (D5, E5, F5, G5, A5, B5).
- Measure 7:** Vocal line continues with quarter notes G5, A5, and B5. Guitar accompaniment features a series of eighth notes on the first string (G5, A5, B5, C6, D6, E6).
- Measure 8:** Vocal line ends with a quarter note C6. Guitar accompaniment features a series of eighth notes on the first string (C6, D6, E6, F6, G6, A6).

7

Handwritten musical score for measures 7 and 8. The score is written on three staves: Treble Clef (top), Bass Clef (middle), and a lower staff (bottom).  
 Measure 7: Treble clef has a series of chords with accents (^) and a circled measure number 7. Bass clef has a melodic line starting with a piano (p) dynamic. The lower staff has a rhythmic pattern with a forte (f) dynamic.  
 Measure 8: Treble clef has a series of chords with accents (^) and a circled measure number 8. Bass clef has a melodic line starting with a piano (p) dynamic. The lower staff has a rhythmic pattern with a forte (f) dynamic.

Handwritten musical score for measures 9, 10, and 11. The score is written on three staves: Treble Clef (top), Bass Clef (middle), and a lower staff (bottom).  
 Measure 9: Treble clef has a series of chords with accents (^) and a circled measure number 9. Bass clef has a melodic line starting with a forte (f) dynamic. The lower staff has a rhythmic pattern with a forte (f) dynamic.  
 Measure 10: Treble clef has a series of chords with accents (^) and a fortissimo (ff) dynamic. Bass clef has a melodic line starting with a forte (f) dynamic. The lower staff has a rhythmic pattern with a forte (f) dynamic.  
 Measure 11: Treble clef has a series of chords with accents (^). Bass clef has a melodic line starting with a forte (f) dynamic. The lower staff has a rhythmic pattern with a forte (f) dynamic.

Handwritten musical score for measures 10-13. The score is written on four staves: two for the upper system and two for the lower system. The upper system contains melodic lines with various ornaments and dynamics. The lower system contains rhythmic notation, including vertical strokes and beams. Measure 10 is circled in the top right corner. The key signature is one sharp (F#).

Handwritten musical score for measures 14-17. The score is written on four staves. The upper system contains melodic lines with ornaments and dynamics. The lower system contains rhythmic notation, including vertical strokes and beams. Measure 14 is circled in the top right corner. The key signature is one sharp (F#).

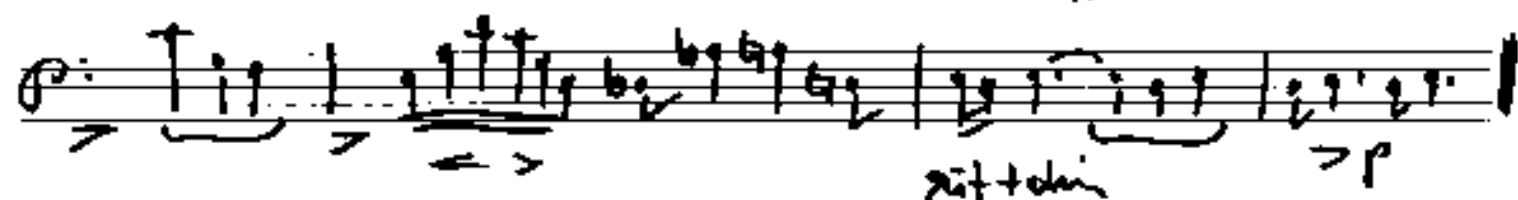
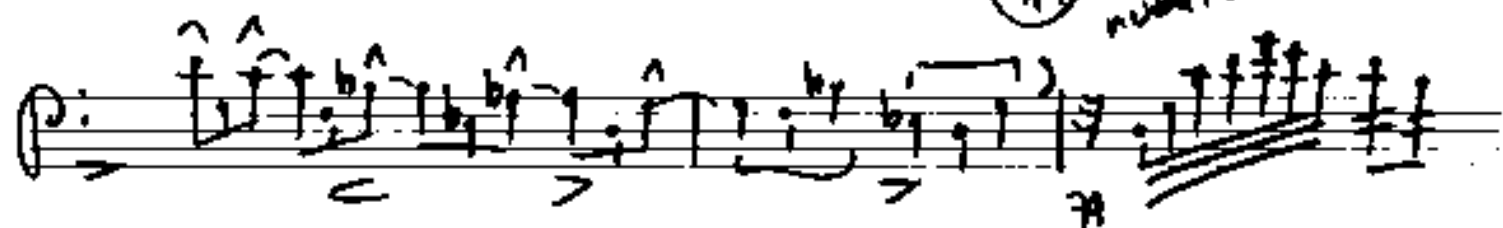
Batsuba (frei)

(13)



(14)

rubato



rit + chin

> p

D.C. al

Fine



sehr schnell

# Teil 3

**System 1:**  
Piano part: *p*, *pp*  
Puls Schlag part: *pp*

**System 2:**  
Piano part: *pp*, *ppc*  
Puls Schlag part: *ppc*

Handwritten musical score for two systems. The first system is marked *p* and *pp* and includes a section labeled "Puls Schlag". The second system is marked *pp* and *ppc* and includes a circled "2" at the end. The score features piano and percussion staves with various notes, rests, and dynamic markings.

2

Handwritten musical score for system 2, measures 1-3. The system consists of three staves. The top staff is a treble clef with a melodic line featuring eighth and sixteenth notes, some with accents. The middle staff is a bass clef with a harmonic accompaniment of chords and single notes. The bottom staff is a bass clef with a rhythmic line of eighth notes. A circled '2' is positioned above the first measure.

3

Handwritten musical score for system 3, measures 4-5. The system consists of three staves. The top staff continues the melodic line from the previous system. The middle staff continues the harmonic accompaniment. The bottom staff continues the rhythmic line. A circled '3' is positioned above the first measure of this system. The system concludes with a double bar line and a circled '5' at the end.

5

Solo

Handwritten musical score for the first system, measures 1-4. The score is written on three staves: Treble, Bass, and a lower Treble staff. The top staff (Treble) features a melodic line with various ornaments (accents, slurs, and grace notes) and a dynamic marking of *fz*. The middle staff (Bass) contains a bass line with chords and notes. The bottom staff (lower Treble) contains a bass line with notes and rests. The system concludes with a double bar line.

6

Handwritten musical score for the second system, measures 5-9. The score is written on three staves: Treble, Bass, and a lower Treble staff. The top staff (Treble) continues the melodic line with ornaments and includes a circled measure number '6'. The middle staff (Bass) contains a bass line with chords and notes. The bottom staff (lower Treble) contains a bass line with notes and rests. The system concludes with a double bar line.

Capitolo ① = cresc. bis III

⑦

Handwritten musical score for the first system, measures 1-4. The notation includes a grand staff with treble and bass clefs. The top staff contains a melodic line with various accidentals (sharps, flats, naturals) and dynamic markings (p, f). The bottom staff contains a bass line with a '1' marking. A large bracket spans the top staff across all four measures.

⑧

Handwritten musical score for the second system, measures 5-8. The notation includes a grand staff with treble and bass clefs. The top staff contains a melodic line with various accidentals and dynamic markings (f). The bottom staff contains a bass line with a 'B. P.' marking. A large bracket spans the top staff across all four measures.

Handwritten musical score for the first system, consisting of three staves. The top two staves are for the piano, and the bottom staff is for the bass. The music is in G major (one sharp) and 3/4 time. The first two staves feature complex chordal textures with many notes and slurs. The bass staff contains a rhythmic pattern of eighth notes in the first measure, followed by rests and eighth notes in the subsequent measures. A circled number '9' is written in the top right corner.

Handwritten musical score for the second system, consisting of three staves. The top two staves are for the piano, and the bottom staff is for the bass. The piano part consists of four measures of whole rests. The bass staff contains a rhythmic pattern of eighth notes in the first measure, followed by rests and eighth notes in the subsequent measures. The system concludes with a double bar line and the word 'CODA' written vertically. A circled number '10' is written in the top right corner. Performance markings include '> dim' at the beginning, '19' in the middle, '> p' and 'pp' at the end, and a fermata over the final measure.

19

21

Handwritten musical score for measures 19-21. The score is written on three staves. The top staff is a treble clef with notes and rests. The middle staff is a bass clef with notes and rests. The bottom staff is a bass clef with notes and rests, labeled "Bsp solo (ohne Schlagzeug)". There are various musical notations including accidentals, dynamics, and articulation marks.



Handwritten musical score for measures 22-24. The score is written on three staves. The top staff is a treble clef with notes and rests. The middle staff is a bass clef with notes and rests. The bottom staff is a bass clef with notes and rests, labeled "f". There are various musical notations including accidentals, dynamics, and articulation marks.

Handwritten musical score for measures 13 and 14. The score is written on three staves: two for a piano (p) and one for a cello/contrabass (Cello).

**Measure 13:**

- Piano (p):** The first staff has a treble clef and a key signature of one sharp (F#). The second staff has a bass clef. Above the first staff, there are handwritten notes:  $\frac{8}{4}$ ,  $\frac{4}{4}$ ,  $\frac{3}{4}$ ,  $\frac{2}{4}$ ,  $\frac{1}{4}$ . Above the second staff, there are notes:  $\frac{4}{4}$ ,  $\frac{3}{4}$ ,  $\frac{2}{4}$ ,  $\frac{1}{4}$ . The piano part consists of chords in the right hand and a bass line in the left hand.
- Cello:** The bottom staff shows a series of notes with stems, likely representing a cello or double bass part.

**Measure 14:**

- Piano (p):** Similar to measure 13, with piano part and cello part.

Additional markings include a circled "13" at the end of the first system and a circled "14" at the end of the second system. There are also some handwritten annotations like "Schlags" and "stange" on the left side.

Handwritten musical score for measures 15 and 16. The score is written on three staves: two for a piano (p) and one for a cello/contrabass (Cello).

**Measure 15:**

- Piano (p):** The first staff has a treble clef and a key signature of one sharp (F#). The second staff has a bass clef. Above the first staff, there are handwritten notes:  $\frac{4}{4}$ ,  $\frac{3}{4}$ ,  $\frac{2}{4}$ ,  $\frac{1}{4}$ . Above the second staff, there are notes:  $\frac{4}{4}$ ,  $\frac{3}{4}$ ,  $\frac{2}{4}$ ,  $\frac{1}{4}$ . The piano part consists of chords in the right hand and a bass line in the left hand.
- Cello:** The bottom staff shows a series of notes with stems, likely representing a cello or double bass part.

**Measure 16:**

- Piano (p):** Similar to measure 15, with piano part and cello part.

Additional markings include a circled "15" at the end of the first system and a circled "16" at the end of the second system. There are also some handwritten annotations like "Schlags" and "stange" on the left side.

1.

Salzburg-Ido

mp

f

p

D.C.



2.

15) frei (melodisch - solo)

Handwritten musical score for measures 14 and 15. Measure 14 contains the text "(rit...)" and a fermata. Measure 15 features a melodic line with a slur and a piano (p) dynamic marking.

Handwritten musical score for measures 16 and 17. Measure 16 has a circled measure number "16" and a slur. Measure 17 has a circled measure number "17" and a piano (p) dynamic marking.

23) rit...

Solo (free / solo playing)

P  
-  
A  
2  
0

(12)

Handwritten musical notation for system 12. It consists of two staves. The top staff has a treble clef and a key signature of one flat. It contains a melodic line with a slur over the first four notes, a fermata over the fifth note, and a final note with an accent. The bottom staff has a bass clef and contains a bass line with a 4/4 time signature, a fermata, and a final chord with an accent. There are handwritten annotations like 'p =', '3 = 3', and '>'.

(11)

Handwritten musical notation for system 11. It consists of two staves. The top staff has a treble clef and a key signature of one flat. It contains a melodic line with a slur over the first four notes, a fermata over the fifth note, and a final note with an accent. The bottom staff has a bass clef and contains a bass line with a 4/4 time signature, a fermata, and a final chord with an accent. There are handwritten annotations like '<', '>', and 'f ='.

Block ⑦ besteht aus 4 Takten

(Paß + Schlagzeug)

ständige Steigerung bis III //

(rit)

Mod. / ~~stetig~~ schreitend / ständige Steigerung →

Basso continuo

p

Schlagp. p = ... Blank [A] ...

Pdo

Handwritten musical score for page 22. The score is written on three staves. The top staff is in treble clef and contains a melodic line with various notes, including some with accents (^) and slurs. The middle staff is in bass clef and contains a bass line with notes and slurs. The bottom staff is a grand staff with a brace underneath, labeled "Basso (A)". The page number "22" is circled in the top right corner.

Handwritten musical score for page 23. The score is written on three staves. The top staff is in treble clef and contains a melodic line with various notes, including some with accents (^) and slurs. The middle staff is in bass clef and contains a bass line with notes and slurs. The bottom staff is a grand staff with a brace underneath, labeled "Basso (A)". The page number "23" is circled in the top right corner.

Handwritten musical score for system 24. The system consists of three staves. The top staff is in treble clef and contains a complex melodic line with many beamed notes and accidentals. The middle staff is in bass clef and contains a bass line with several chords and slurs. The bottom staff is a grand staff with a treble clef and contains a long, wavy line labeled "Pl. A". The system is numbered "24" in a circle on the right.

Handwritten musical score for system 25. The system consists of three staves. The top staff is in treble clef and contains a complex melodic line with many beamed notes and accidentals. The middle staff is in bass clef and contains a bass line with several chords and slurs. The bottom staff is a grand staff with a treble clef and contains a long, wavy line labeled "Pl. A". The system is numbered "25" in a circle on the right.

appassionata (rubato) bewepte 4

(Diese 4 Takte) 4x mit accel.

Bl. A

26

Hausaufstempel

allegro

D.C.

Teil 3

al

⊕ CODA

Solo ff > [rhythmic symbols]

27

Φ CODA

(A)

Handwritten musical score for section A, measures 1-4. The score is written on three staves. The top staff is in treble clef, the middle in alto clef, and the bottom in bass clef. The music features a complex melodic line in the top staff with many accidentals and slurs. The middle and bottom staves provide harmonic support with chords and rhythmic patterns. A double bar line is present at the end of measure 4.

(B)

(C)

Handwritten musical score for section B, measures 5-8. The score continues on three staves. The notation is dense with many accidentals and slurs, particularly in the top staff. The bottom staff shows a rhythmic pattern of eighth notes. A double bar line is present at the end of measure 8.



Sahit mit H

Pedal

(Reiß (Pianos Solo)

Schlagwerk

freies Solo mit  
Abschlag

Flie  
(Trio)