

Mod.

①

①

Handwritten musical score for the first system. The treble clef staff contains a melody with notes marked with accents (^) and slurs. The piano accompaniment is written in a grand staff format. Annotations include "(4x)", "mit Ausdruck", and circled "p" markings.

②

Handwritten musical score for the second system. The treble clef staff continues the melody. The piano accompaniment continues in the grand staff. Annotations include a circled "p" marking.

Seite ①

Handwritten musical score for system 3. The system consists of three staves: a treble clef staff at the top, a grand staff (piano and bass clefs) in the middle, and a bass clef staff at the bottom. The treble staff contains a melodic line with various notes, including some with accidentals (sharps and naturals), and is marked with a forte 'f' dynamic. The grand staff contains accompaniment for the piano and bass. The bass staff contains a bass line. A circled number '3' is written at the end of the system.

Handwritten musical score for system 4. The system consists of three staves: a treble clef staff at the top, a grand staff (piano and bass clefs) in the middle, and a bass clef staff at the bottom. The treble staff contains a melodic line with various notes, including some with accidentals (flats and naturals), and is marked with a forte '>f>' dynamic. The grand staff contains accompaniment for the piano and bass. The bass staff contains a bass line. A circled number '4' is written at the end of the system.

2

5

Handwritten musical score for system 5. The top staff contains a melodic line with notes and rests, including a circled 'p' dynamic marking. The middle staff shows a complex rhythmic pattern with notes and rests, also featuring a circled 'p' dynamic marking. The bottom staff contains a bass line with notes and rests, including a circled 'p' dynamic marking. The system is divided into three measures by vertical bar lines.

6

Handwritten musical score for system 6. The top staff contains a melodic line with notes and rests, including a circled 'p' dynamic marking. The middle staff shows a complex rhythmic pattern with notes and rests, also featuring a circled 'p' dynamic marking. The bottom staff contains a bass line with notes and rests, including a circled 'p' dynamic marking. The system is divided into three measures by vertical bar lines.

3

6

7

Handwritten musical score for measures 6 and 7. Measure 6 features a complex melodic line with many accidentals and dynamics like 'ff' and 'p'. Measure 7 is mostly rests with some dynamic markings.

8

Handwritten musical score for measure 8. The melodic line is mostly rests, with the word "(zeit...)" written in the staff. Dynamics include 'ff' and 'p'.

4

8 ruhig -

9

Handwritten musical score for measures 8 and 9. The score is written on two staves (treble and bass clefs) with a grand staff bracket. The music features a melodic line in the upper voice and a supporting bass line. Measure 8 includes a piano (p) dynamic marking and a fermata over the final note. Measure 9 includes a forte (>) dynamic marking and a fermata over the final note. The key signature has one sharp (F#).

10

Handwritten musical score for measures 10 and 11. The score is written on two staves (treble and bass clefs) with a grand staff bracket. The music continues from the previous system. Measure 10 includes a piano (p) dynamic marking and a fermata over the final note. Measure 11 includes a piano (p) dynamic marking and a fermata over the final note. The key signature has one sharp (F#).

5

10

breit

11

Handwritten musical score for measures 10 and 11. Measure 10 starts with a piano dynamic (*p*) and a *breit* marking. The score shows a vocal line with a slur and a piano accompaniment with chords and slurs. Measure 11 continues the vocal line with a slur and the piano accompaniment with chords and slurs.

12

Handwritten musical score for measures 12 and 13. Measure 12 starts with a mezzo-piano dynamic (*mp*) and a *frei* marking. The score shows a vocal line with a slur and a piano accompaniment with chords and slurs. Measure 13 continues the vocal line with a slur and the piano accompaniment with chords and slurs. A circled symbol is at the end of measure 13.

12

freies Solo

Handwritten musical score for six staves. The notation includes various chords, melodic lines, and dynamic markings such as p, ff, and cresc. The score is written in a single system with six staves.

13

> dem + mit > ff

D.C. al $\text{\textcircled{f}}$

① frei)

Handwritten musical score for violin and piano. The score is written on four staves. The top staff is for the violin, and the bottom two staves are for the piano. The music is in a key with one sharp (F#) and a common time signature (C). The tempo is marked "Lento". The violin part begins with a circled "1" and includes dynamic markings "pp" and "zart (Vibrato)". The piano part includes dynamic markings "pp" and "ppp". The score concludes with a circled "Fin".

Allegretto

Setz ②

(gruesk) heiter

Seite

② tempo

Handwritten musical score for the first system, measures 2-3. The system consists of two staves. The upper staff is in treble clef and contains a melodic line with slurs and accents. The lower staff is in bass clef and contains a bass line with slurs. A circled '2' is at the beginning of the system, and a circled '3' is at the end. The key signature has one sharp (F#).

Handwritten musical score for the second system, measures 4-5. The system consists of two staves. The upper staff is in treble clef and contains a melodic line with slurs and accents. The lower staff is in bass clef and contains a bass line with slurs. A circled '4' is at the end of the system. The key signature has one sharp (F#).

④ *and.* →

ff

f

5

ff

f

6

M

pff

and.

6

Presto

Handwritten musical score for measures 6-7. The score is in 2/4 time and consists of three staves. The top staff is for the right hand, the middle for the left hand, and the bottom for the right hand. Measure 6 contains a melodic line in the right hand with a trill-like figure and a half note in the left hand. Measure 7 continues the melodic line with a trill and a half note. Dynamics include 'p' and 'f' with accents. A circled '6' is in the left margin.

7

Handwritten musical score for measures 8-9. The score is in 2/4 time and consists of three staves. The top staff is for the right hand, the middle for the left hand, and the bottom for the right hand. Measure 8 contains a melodic line in the right hand with a trill-like figure and a half note in the left hand. Measure 9 continues the melodic line with a trill and a half note. Dynamics include 'f' and 'p' with accents. A circled '8' is in the right margin.

8

9

Handwritten musical score for systems 8 and 9. System 8 (measures 8-11) features a piano accompaniment with a circled key signature of one sharp (F#) and a circled time signature of 9/8. The right hand has a melodic line with slurs and accents, while the left hand has a bass line with notes and stems. System 9 (measures 12-15) continues the piece with similar notation and a circled key signature of one flat (Bb).

10

Handwritten musical score for system 10 (measures 16-19). The right hand has a melodic line with a slur and a fermata. The left hand has a bass line with notes and stems. A circled key signature of one sharp (F#) is visible on the left side of the system.

13

Pronto (legg.)

Handwritten musical score for measures 10 and 11. The top staff is in treble clef, and the bottom two staves are in bass clef. Measure 10 features a melodic line in the treble with a forte (**f**) dynamic and a piano (**pp**) accompaniment in the bass. Measure 11 continues the melodic line with accents (^) and a circled measure number **10** in the top right corner.

Handwritten musical score for measures 12 and 13. The top staff is in treble clef, and the bottom two staves are in bass clef. Measure 12 features a melodic line in the treble with a forte (**f**) dynamic and a piano (**p**) accompaniment in the bass. Measure 13 continues the melodic line with accents (^) and a circled measure number **12** in the top right corner.

Handwritten musical score for measures 12 and 13. The score is written on three staves: a treble clef staff at the top, a grand staff (piano and bass clefs) in the middle, and a bass clef staff at the bottom. Measure 12 is circled in the top left. Measure 13 is circled in the top right. The music features complex chordal textures with many beamed notes and accidentals. A circled 'H' with an arrow points to a note in the piano part of measure 12. A circled 'P' with an arrow points to a note in the bass staff of measure 12. A circled 'P' with an arrow points to a note in the piano part of measure 13.

Handwritten musical score for measures 14 and 15. The score is written on three staves: a treble clef staff at the top, a grand staff (piano and bass clefs) in the middle, and a bass clef staff at the bottom. Measure 14 is circled in the top right. Measure 15 is circled in the bottom left. The music features complex chordal textures with many beamed notes and accidentals. A circled 'H' with an arrow points to a note in the piano part of measure 14. A circled 'P' with an arrow points to a note in the piano part of measure 14. A circled 'P' with an arrow points to a note in the piano part of measure 15. A circled 'P' with an arrow points to a note in the bass staff of measure 15.

2. Sk (gr. mit + dir)

Handwritten musical score for a piece titled "2. Sk (gr. mit + dir)". The score consists of six staves of music. The first staff begins with a treble clef, a key signature of one sharp (F#), and a dynamic marking of "ff". The second staff begins with a bass clef and a dynamic marking of "p". The third staff has a circled measure number "15" at the end. The fourth staff has a circled measure number "16" at the end. The fifth staff has a circled measure number "16" at the end. The sixth staff has a circled measure number "16" at the end and a circled "D.C. al" marking. The score includes various musical notations such as notes, rests, beams, slurs, and dynamic markings like "ff", "p", and "pp". There are also some handwritten annotations like "gr." and "mit".

♩ coda (Prestissimo)

Handwritten musical score for the first system of a coda. The system consists of three staves: a single treble clef staff at the top, and a grand staff (treble and bass clefs) below. The key signature has one flat (B-flat). The time signature is common time (C). The tempo marking is *Prestissimo*. The first staff contains a melodic line with slurs and accents. The grand staff contains a piano accompaniment with chords and moving lines. A circled 'A' is at the end of the first staff. The word *diminuendo* is written in the first staff.

Handwritten musical score for the second system of a coda. The system consists of three staves: a single treble clef staff at the top, and a grand staff (treble and bass clefs) below. The key signature has one flat (B-flat). The time signature is common time (C). The tempo marking is *Prestissimo*. The first staff contains a melodic line with slurs and accents. The grand staff contains a piano accompaniment with chords and moving lines. A circled 'B' is at the end of the first staff.

Handwritten musical score for the first system, measures 1-4. The notation includes treble and bass staves with various notes, rests, and dynamic markings.

Measure 1: Treble clef, notes G4, A4, B4, C5. Bass clef, notes G2, A2, B2, C3. Dynamic: *legg.*

Measure 2: Treble clef, notes G4, A4, B4, C5. Bass clef, notes G2, A2, B2, C3. Dynamic: *legg.*

Measure 3: Treble clef, notes G4, A4, B4, C5. Bass clef, notes G2, A2, B2, C3. Dynamic: *legg.*

Measure 4: Treble clef, notes G4, A4, B4, C5. Bass clef, notes G2, A2, B2, C3. Dynamic: *legg.*

Handwritten musical score for the second system, measures 5-8. The notation includes treble and bass staves with various notes, rests, and dynamic markings.

Measure 5: Treble clef, notes G4, A4, B4, C5. Bass clef, notes G2, A2, B2, C3. Dynamic: *legg.*

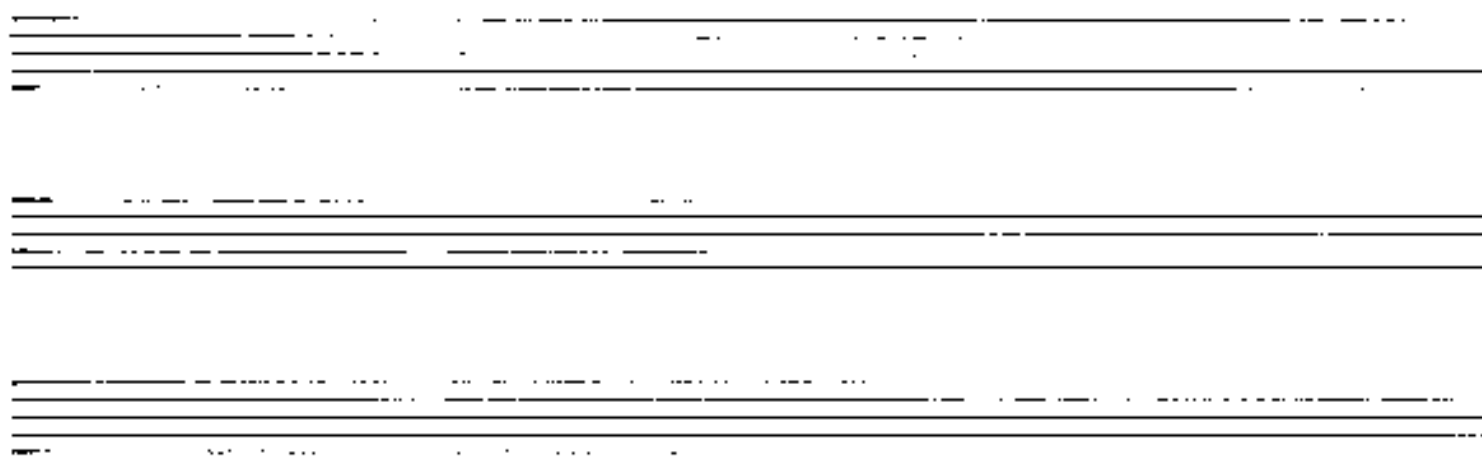
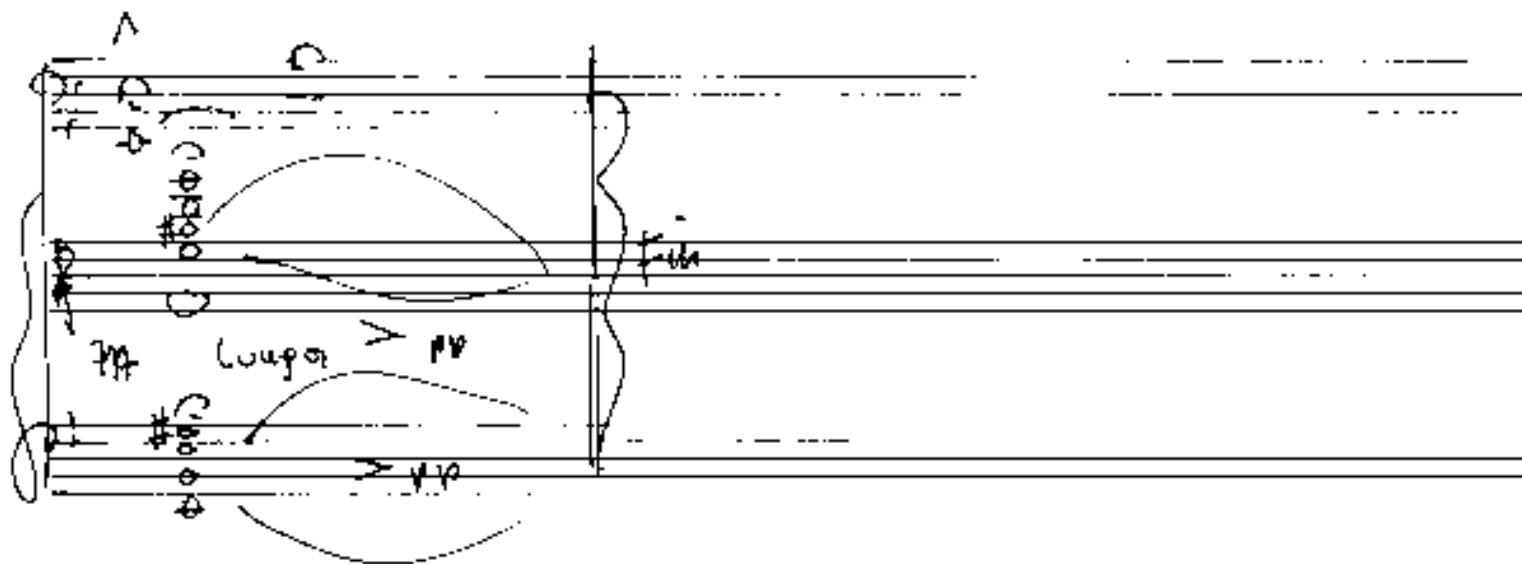
Measure 6: Treble clef, notes G4, A4, B4, C5. Bass clef, notes G2, A2, B2, C3. Dynamic: *legg.*

Measure 7: Treble clef, notes G4, A4, B4, C5. Bass clef, notes G2, A2, B2, C3. Dynamic: *legg.*

Measure 8: Treble clef, notes G4, A4, B4, C5. Bass clef, notes G2, A2, B2, C3. Dynamic: *legg.*

Handwritten musical score for the first system, consisting of three staves. The top staff is a vocal line with lyrics "rasant!" written below it. The middle and bottom staves are piano accompaniment. The music is in 2/4 time and features a melodic line with various ornaments and a rhythmic accompaniment. A circled number "5" is written at the end of the system.

Handwritten musical score for the second system, consisting of three staves. The top staff continues the vocal line. The middle and bottom staves continue the piano accompaniment. The music includes a section with a wavy line indicating a tremolo or rapid oscillation. A circled number "6" is written at the end of the system.



Adagio (pauze frei)

③

①

pp sehr langsam — frei)

ppp

pizz

②

②

Handwritten musical score for the first system. The top staff is a treble clef with complex chords and articulation marks. The bottom two staves are a grand staff with piano accompaniment. Dynamic markings include *ppp* and *pp*. A circled '3' is at the end of the system.

Solo (Piano)

Handwritten musical score for the second system, labeled "Solo (Piano)". It features a single treble clef staff with a melodic line. Dynamic markings include *p* and *pp*. A circled '4' is at the end of the system.

APAGIO (frei) rit. langsam

5

Handwritten musical score for measures 5-8. The score is written on three staves. The top staff contains a melodic line with notes and accidentals, including a circled '5' at the end. The middle and bottom staves contain piano accompaniment with chords and arpeggiated figures. Dynamics include 'ppp' and 'f'.

6

Handwritten musical score for measures 9-12. The score is written on three staves. The top staff contains a melodic line with notes and accidentals, including a circled '6' at the end. The middle and bottom staves contain piano accompaniment with chords and arpeggiated figures. Dynamics include 'ppp' and 'f'. A circled 'rit' is present in the middle staff.

(frei)

Handwritten musical score for three staves. The top staff contains a melodic line with various notes, accidentals, and dynamics such as *pp*, *ppp*, and *pp*. It includes slurs and accents. The middle staff features a sustained melodic line with a dynamic marking of *pp* and a fermata. The bottom staff contains a sustained melodic line with a dynamic marking of *ppp*. The word "Lunga" is written in the right margin. The score concludes with a double bar line and a vertical line on the right side.

11. - 215

19

Prestissimo

1

Handwritten musical score for the first system, measures 1-3. The score is for piano and includes dynamic markings like *pp* and accents. The first measure contains a triplet of eighth notes in both hands, marked with a '3' and an accent (^). The second and third measures feature sustained notes with accents.

2

Handwritten musical score for the second system, measures 4-6. The score includes dynamic markings like *f* and *ff*. The first measure of this system has a '4' marking above the piano part. The music continues with eighth-note patterns and accents, culminating in a fortissimo (*ff*) section in the final measure.

Seite 25

②

furioso (heftig)

③

Handwritten musical score for measures 2-3. The score is written on two staves. The upper staff contains a treble clef and a key signature of one sharp (F#). The lower staff contains a bass clef and a key signature of one flat (Bb). The music is marked 'furioso (heftig)'. Measure 2 features a complex chordal texture with a circled '777' in the bass staff. Measure 3 shows a continuation of the complex texture with various accidentals and dynamics.

④

Handwritten musical score for measures 4-5. The score is written on two staves. The upper staff contains a treble clef and a key signature of one sharp (F#). The lower staff contains a bass clef and a key signature of one flat (Bb). The music is marked 'furioso (heftig)'. Measure 4 features a complex chordal texture with a circled '777' in the bass staff. Measure 5 shows a continuation of the complex texture with various accidentals and dynamics.

brilliant (solistisch)

Handwritten musical score for measures 5 and 6. The top staff is a single melodic line with various ornaments and slurs. The bottom two staves are a piano accompaniment with chords and bass lines. Measure 5 is circled with a '5'.

Handwritten musical score for measures 7 and 8. The top staff continues the melodic line with slurs and ornaments. The bottom two staves continue the piano accompaniment. Measure 7 is circled with a '6'.

⑥ (choans (rien))

⑦

Handwritten musical score for measures 6 and 7. Measure 6 is marked "(choans (rien))". Measure 7 is marked "ff" in a circle. The score includes vocal lines and piano accompaniment.

(in Tempo)

⑧

Handwritten musical score for measures 8 and 9. Measure 8 is marked "(in Tempo)". Measure 9 is marked "ff" in a circle. The score includes vocal lines and piano accompaniment.

8 Zeit (mit + dein) —
Zeit
Zeit

9

Handwritten musical score for system 8, measures 1-4. The system consists of three staves. The top staff is a treble clef with a key signature of one sharp (F#) and a common time signature (C). The middle staff is an alto clef with a key signature of one sharp (F#) and a common time signature (C). The bottom staff is a bass clef with a key signature of one sharp (F#) and a common time signature (C). The music features various notes, rests, and dynamic markings such as *v* and *f*. There are some scribbles and corrections in the middle staff.

Handwritten musical score for system 9, measures 1-4. The system consists of three staves. The top staff is a treble clef with a key signature of one sharp (F#) and a common time signature (C). The middle staff is an alto clef with a key signature of one sharp (F#) and a common time signature (C). The bottom staff is a bass clef with a key signature of one sharp (F#) and a common time signature (C). The music features various notes, rests, and dynamic markings such as *f* and *p*. There are some scribbles and corrections in the middle staff. The word "Zeit" is written above the first measure of the middle staff, and "Zeit + dein" is written below the first measure of the middle staff. The word "(Zeit)" is written in the middle of the second measure of the top staff. The number "20" is written in a circle at the end of the system.

29

10

lyang frei

Handwritten musical score for the first system, measures 10-12. The treble staff contains a melodic line with slurs and dynamic markings 'pp' and 'f'. The piano accompaniment consists of two staves with chords and a 'pp' marking.

Handwritten musical score for the second system, measures 13-15. The treble staff contains a melodic line with slurs and dynamic markings 'pp' and 'f'. The piano accompaniment consists of two staves with chords and a 'pp' marking.

Prelimina

subito ff *cresc.*

(B)

cresc.

Handwritten musical score for section B, measures 1-4. The score is written on a grand staff with treble and bass clefs. It features a key signature of one sharp (F#) and a common time signature. The music includes various note values, rests, and dynamic markings such as 'ff' and 'cresc.'. There are also some handwritten annotations like 'non' and 'na' above the staff.

(C)

Handwritten musical score for section C, measures 5-8. The score is written on a grand staff with treble and bass clefs. It features a key signature of two sharps (F# and C#) and a common time signature. The music includes various note values, rests, and dynamic markings such as 'ff' and 'cresc.'. There are also some handwritten annotations like 'na' above the staff.

Handwritten musical score for two systems, each consisting of three staves. The notation includes notes, rests, slurs, and dynamic markings.

System 1:

- Staff 1 (Top):** Single melodic line. Starts with a circled '4' and a dynamic marking 'p'. Features a series of notes with slurs and accents, ending with a circled '4'.
- Staff 2 (Middle):** Dense chordal texture with many notes, some with accents.
- Staff 3 (Bottom):** Single melodic line. Starts with a circled '4' and a dynamic marking 'pp'. Features a series of notes with slurs and accents.

System 2:

- Staff 1 (Top):** Single melodic line. Starts with a circled '5' and a dynamic marking 'p'. Features a series of notes with slurs and accents, ending with a circled '5'.
- Staff 2 (Middle):** Dense chordal texture with many notes, some with accents.
- Staff 3 (Bottom):** Single melodic line. Starts with a circled '5' and a dynamic marking 'p'. Features a series of notes with slurs and accents.

brilliant

The image shows two systems of handwritten musical notation. Each system consists of a treble clef staff and a bass clef staff. The first system is marked with the word "brilliant" above the treble staff. The treble staff contains a melodic line with various ornaments (accents, slurs) and dynamic markings like mf and f . The bass staff provides harmonic support with chords and single notes. The first system concludes with a circled letter "F". The second system continues the piece, also featuring melodic lines with ornaments and dynamic markings, ending with a circled letter "G".

G1

x

Handwritten musical score for system G1. It consists of three staves. The top staff has a treble clef and a key signature of one flat. The middle staff has a treble clef and a key signature of one flat, with a circled '1' and a '3' below it. The bottom staff has a bass clef and a key signature of one flat, with a circled '1' and a '3' below it. The music features various notes, rests, and dynamic markings.

G2

Handwritten musical score for system G2. It consists of three staves. The top staff has a treble clef and a key signature of one flat. The middle staff has a treble clef and a key signature of one flat, with a circled '1' and a '3' below it. The bottom staff has a bass clef and a key signature of one flat, with a circled '1' and a '3' below it. The music features various notes, rests, and dynamic markings.

93

Handwritten musical score for measures 93-95. The top staff (treble clef) contains a melodic line with a key signature of one flat and a circled '93' in the top right. The middle and bottom staves (bass clefs) provide accompaniment with chords and rhythmic patterns. A circled '94' is located at the end of the system.

94

Handwritten musical score for measures 96-98. The top staff (treble clef) contains a melodic line with a key signature of one flat and a circled '94' in the top right. The middle and bottom staves (bass clefs) provide accompaniment with chords and rhythmic patterns. A circled '95' is located at the end of the system.

Handwritten musical score for measures 65 and 66. The score is written on three staves: a single treble clef staff at the top, and a grand staff (treble and bass clefs) below. The music is in 4/4 time and features complex rhythmic patterns and dynamics.

Measure 65: The top staff begins with a quarter rest, followed by a quarter note G4 with an accent (^) and a circled 'p'. The next two measures contain eighth notes: G4 (quarter), F#4 (quarter), G4 (quarter), and F#4 (quarter), all with accents (^). The final measure of the system contains a quarter note G4 with an accent (^) and a circled 'p', followed by a quarter rest. The grand staff below shows a complex accompaniment with many beamed notes and rests. Dynamics include 'pp' (pianissimo) and 'p' (piano).

Measure 66: The top staff starts with a quarter note G#4 with an accent (^) and a circled 'p', followed by a quarter rest. The next two measures contain eighth notes: G#4 (quarter), F#4 (quarter), G#4 (quarter), and F#4 (quarter), all with accents (^). The final measure of the system contains a quarter note G#4 with an accent (^) and a circled 'p', followed by a quarter rest. The grand staff below continues the accompaniment. Dynamics include 'pp', 'p', and 'f' (forte).

4

Handwritten musical score for the first system, measures 1-4. The top staff is in treble clef and contains a melodic line with various ornaments and slurs. The bottom two staves are in grand staff (treble and bass clefs) and contain piano accompaniment. A circled 'pp' (pianissimo) dynamic marking is present in the first measure of the piano part, along with the text '(P133)'. The key signature has one flat (B-flat).

5

Handwritten musical score for the second system, measures 5-8. The notation continues from the first system. The piano accompaniment features dynamic markings of 'pp' (pianissimo) and 'ff' (fortissimo). The melodic line in the treble clef staff shows further development of the theme. The key signature remains one flat.

Tempo (furiato)

(K)

Handwritten musical score for the first system, measures 1-5. The system consists of three staves: a vocal line (top), a piano right hand (middle), and a piano left hand (bottom). The vocal line begins with a treble clef, a key signature of one flat (B-flat), and a 2/4 time signature. It features a melodic line with a first ending bracket over measures 1-2, followed by a triplet of eighth notes in measure 3, and a triplet of eighth notes in measure 4. The piano right hand accompaniment starts with a circled '777' and features a triplet of eighth notes in measure 1, followed by eighth notes with accents in measures 2-5. The piano left hand accompaniment consists of a steady eighth-note pattern with accents in measures 1-5.

Handwritten musical score for the second system, measures 6-10. The system consists of three staves: a vocal line (top), a piano right hand (middle), and a piano left hand (bottom). The vocal line is mostly silent, with a circled 'L' at the end of the system. The piano right hand accompaniment features a complex chordal texture in measure 6, followed by chords with accents in measures 7-10. The piano left hand accompaniment features a steady eighth-note pattern with accents in measures 6-10.

Handwritten musical score for piano and voice. The score is written on three systems of staves. The top system consists of a single staff with a treble clef, containing a melodic line with various ornaments and a final chord. The middle system consists of two staves with a grand staff clef (treble and bass clefs), containing piano accompaniment with chords and some melodic fragments. The bottom system also consists of two staves with a grand staff clef, continuing the piano accompaniment. A circled 'M' is present at the end of the bottom system. The notation includes notes, rests, accidentals, and dynamic markings such as *f*, *pp*, and *ppp*.

Proximimo

(ad. lib. Fgott bis)

(N)

The first system of the handwritten musical score consists of two staves. The upper staff is a vocal line in treble clef, starting with a circled '4' and a circled 'N'. It contains a melodic line with various notes, rests, and slurs, ending with a fermata. The lower staff is a piano accompaniment in bass clef, featuring a complex rhythmic pattern of sixteenth and thirty-second notes, with several slurs and accents. A large bracket spans across both staves, indicating a single musical phrase.

The second system of the handwritten musical score also consists of two staves. The upper staff continues the vocal line, with a circled word 'Lunga' written above it. The lower staff continues the piano accompaniment. A large bracket spans across both staves. The notation includes various musical symbols such as slurs, accents, and fermatas.