

Fantasie in D Moll
für Orgel
(im alten Stil)

ADAGIO

Handwritten musical score for the first system. It consists of three staves: a treble clef staff, a grand staff (treble and bass clefs), and a bass clef staff. The treble staff begins with a 2/4 time signature and contains a melodic line with a slur over the final two measures. The grand staff contains accompaniment with various notes and rests. The bass staff features a simple bass line with rests and notes. Dynamic markings include 'p' (piano) and 'f' (forte).

Handwritten musical score for the second system. It consists of three staves: a treble clef staff, a grand staff, and a bass clef staff. The treble staff has a more active melodic line with slurs and ties. The grand staff accompaniment includes chords and moving lines. The bass staff continues the simple bass line. Dynamic markings include 'p' and 'f'.

Handwritten musical score for the third system. It consists of three staves: a treble clef staff, a grand staff, and a bass clef staff. The treble staff features sustained chords and a final melodic phrase. The grand staff accompaniment includes sustained chords. The bass staff continues the simple bass line. Dynamic markings include 'p' and 'f'.

Handwritten musical score for the first system, featuring three staves with treble, alto, and bass clefs. The music includes a melodic line with slurs and a bass line with chords and notes.

Handwritten musical score for the second system, featuring three staves with treble, alto, and bass clefs. The music includes a melodic line with slurs and a bass line with chords and notes. A red scribble is present on the right side of the system.

Allegro

Handwritten musical score for the third system, featuring three staves with treble, alto, and bass clefs. The music includes a melodic line with slurs and a bass line with chords and notes.

breit (lento)

Handwritten musical score for the first system. It consists of three staves. The top staff has a treble clef and a key signature of two flats (B-flat and E-flat). The middle and bottom staves have bass clefs and the same key signature. The music is marked *breit (lento)*. The first two measures show chords in the upper staves and single notes in the lower staff. The third measure begins a phrase marked *rit* (ritardando), with a slur over the notes in the upper staves and a single note in the lower staff. The system ends with a double bar line.

Handwritten musical score for the second system. It consists of three staves. The top staff has a treble clef and a key signature of two flats. The middle and bottom staves have bass clefs and the same key signature. The music begins with chords in the upper staves and single notes in the lower staff. A circled *p* (piano) marking is present in the second measure. The system ends with a double bar line.

Four empty musical staves, each consisting of five lines, arranged vertically.

quasi

rit.

Tempo Allegro

Handwritten musical score for the first system. The treble clef has a key signature of one flat (B-flat) and a 4/4 time signature. The right hand part consists of a melodic line with eighth notes and slurs. The left hand part consists of a simple accompaniment with quarter notes and rests.

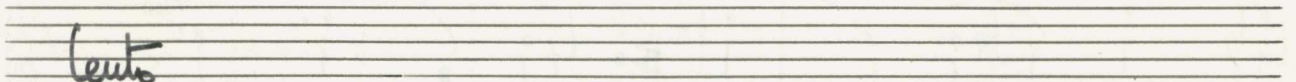
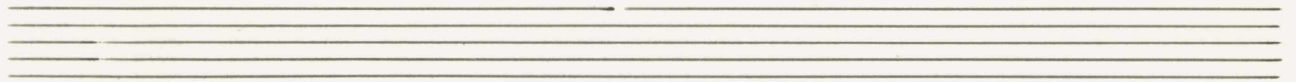
Handwritten musical score for the second system. The treble clef has a key signature of one flat (B-flat) and a 4/4 time signature. The right hand part continues with a melodic line. The left hand part has a more active accompaniment with eighth notes and a key signature change to one sharp (F#) in the second measure.

Handwritten musical score for the third system. The treble clef has a key signature of one flat (B-flat) and a 4/4 time signature. The right hand part starts with the instruction "(frei)" and has a more complex melodic line with slurs and ties. The left hand part has a complex accompaniment with a 4/4 time signature and a key signature of one flat (B-flat).

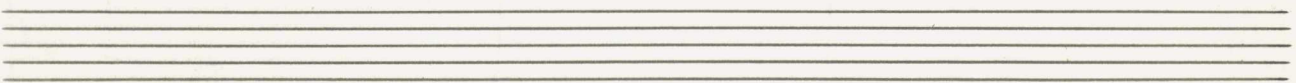
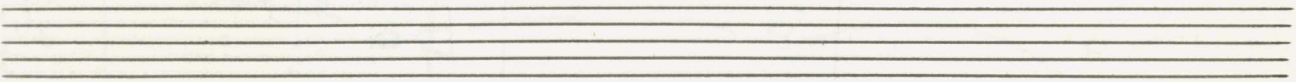
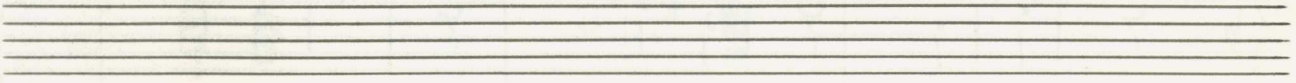
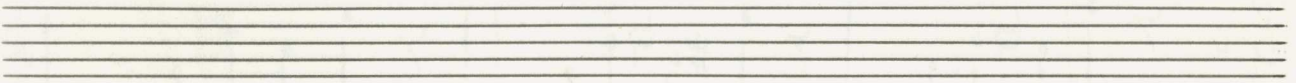
Handwritten musical notation for the first system. It consists of a treble clef staff with a melodic line and a grand staff (piano accompaniment) below it. The melodic line starts with a sharp sign and contains several notes with a slur and a fermata. The piano accompaniment features chords and eighth notes.

Handwritten musical notation for the second system. The word "breit" is written above the first measure, and "rit" is written above the second measure. The notation includes a treble clef, a melodic line with a slur and a fermata, and a piano accompaniment with chords and a fermata.

Four empty musical staves for notation.



cello



Handwritten musical score for the first system, featuring three staves with treble, alto, and bass clefs. The music includes various notes, rests, and accidentals, with a 'rit.' marking at the end.

ritato (appassionata)

Handwritten musical score for the second system, featuring three staves with treble, alto, and bass clefs. The music includes various notes, rests, and accidentals, with a 'ff' marking.

Handwritten musical score for the third system, featuring three staves with treble, alto, and bass clefs. The music includes various notes, rests, and accidentals.

Handwritten musical notation for the first system. It features a grand staff with three staves. The top staff is in G-flat major (one flat) and 9/8 time, indicated by a treble clef, a key signature of one flat, and a 9/8 time signature. The middle staff contains a melodic line with several groups of beamed eighth notes, some marked with accents. The bottom staff contains a single bass note with a fermata. A vertical bar line is present on the right side of the system.

Handwritten musical notation for the second system. It features a grand staff with three staves. The top staff is in G major (one sharp) and 8/8 time, indicated by a treble clef, a key signature of one sharp, and an 8/8 time signature. The middle staff contains a melodic line with beamed eighth notes and a key signature change to G major. The bottom staff contains a single bass note with a fermata. A vertical bar line is present on the right side of the system.

Handwritten musical notation for the first system. It consists of three staves. The top staff is in treble clef and contains a 7-measure rest followed by a melodic line starting with a flat sign. The middle staff is in bass clef and contains a 7-measure rest followed by a flat sign. The bottom staff is in bass clef and contains a 7-measure rest followed by a flat sign. A large slur covers the melodic line in the top staff.

Handwritten musical notation for the second system. It consists of three staves. The top staff is in treble clef and contains a 7-measure rest followed by a flat sign. The middle staff is in bass clef and contains a 7-measure rest followed by a melodic line starting with a flat sign. The bottom staff is in bass clef and contains a 7-measure rest followed by a flat sign. A large slur covers the melodic line in the middle staff.

Handwritten musical notation for the third system. It consists of three staves. The top staff is in treble clef and contains a 7-measure rest followed by a sharp sign. The middle staff is in bass clef and contains a 7-measure rest followed by a melodic line starting with a sharp sign. The bottom staff is in bass clef and contains a 7-measure rest followed by a sharp sign. A large slur covers the melodic line in the middle staff.

weiter

Handwritten musical notation for the first system. It consists of three staves. The top two staves are grouped by a brace and contain chords with accidentals (flats and sharps). The bottom staff contains a single note with a long horizontal line underneath it, indicating a sustained sound.

Handwritten musical notation for the second system. It consists of three staves. The top two staves are grouped by a brace and contain chords with accidentals. The bottom staff contains a single note with a long horizontal line underneath it, indicating a sustained sound.

mit

Handwritten musical notation for the third system. It consists of three staves. The top staff has a chord with a flat. The middle staff has a chord with a sharp and a flat, followed by a boxed-in diagram of a chord with a sharp and a flat. The bottom staff has a single note with a sharp. There are also some scribbles and additional notes in the middle and bottom staves.

Andante

Handwritten musical notation for the first system. It consists of two staves. The upper staff is in treble clef with a key signature of one flat (B-flat) and a 4/4 time signature. The lower staff is in bass clef with a key signature of one flat (B-flat). The music begins with a double bar line and a repeat sign. The first measure contains a circled 'p' (piano) dynamic marking. The notation includes quarter notes, eighth notes, and rests, with various phrasing slurs and accents.

Handwritten musical notation for the second system. It consists of two staves. The upper staff is in treble clef with a key signature of one flat (B-flat). The lower staff is in bass clef with a key signature of one flat (B-flat). The notation includes quarter notes, eighth notes, and rests, with various phrasing slurs and accents.

Handwritten musical notation for the third system. It consists of two staves. The upper staff is in treble clef with a key signature of one flat (B-flat). The lower staff is in bass clef with a key signature of one flat (B-flat). The notation includes quarter notes, eighth notes, and rests, with various phrasing slurs and accents.

Handwritten musical score for three staves. The top staff has a treble clef and a key signature of two sharps (F# and C#). The middle and bottom staves have a grand staff clef (treble and bass clefs). The word "rit." is written above the first measure of the top staff. The first measure of the top staff contains a whole rest. The second measure of the top staff contains a half note G#4, a quarter note A4, and a quarter note B4, all beamed together. The first measure of the middle staff contains a half note G3, a quarter note A3, and a quarter note B3, all beamed together. The second measure of the middle staff contains a half note C#4, a quarter note D4, and a quarter note E4, all beamed together. The first measure of the bottom staff contains a whole rest. The second measure of the bottom staff contains a half note G2, a quarter note A2, and a quarter note B2, all beamed together. The word "D.C. al Φ " is written below the bottom staff.

Handwritten musical score for three staves. The top staff has a treble clef and a key signature of two sharps (F# and C#). The middle and bottom staves have a grand staff clef (treble and bass clefs). The word "rit." is written above the first measure of the top staff. The first measure of the top staff contains a whole rest. The second measure of the top staff contains a half note G#4, a quarter note A4, and a quarter note B4, all beamed together. The first measure of the middle staff contains a half note G3, a quarter note A3, and a quarter note B3, all beamed together. The second measure of the middle staff contains a half note C#4, a quarter note D4, and a quarter note E4, all beamed together. The first measure of the bottom staff contains a whole rest. The second measure of the bottom staff contains a half note G2, a quarter note A2, and a quarter note B2, all beamed together. The word "rit." is written below the middle staff.