

L.v. BEETHOVEN



W.A. MOZART



NOTENHEFT

F. SCHUBERT



J. HAYDN



J. STRAUSS



FORNAT

III (rotig Dießend.)

Handwritten musical score for the first system, measures 1-3. The notation includes a treble clef with a circled 'p' dynamic marking. The melody consists of quarter notes: G4, A4, B4, C5, B4, A4, G4. The piano accompaniment includes a bass line with notes G2, A2, B2, C3, B2, A2, G2 and a right-hand part with notes G4, A4, B4, C5, B4, A4, G4. The piano part is marked 'Piano' and 'pizz'.

Sollang zemp ad. lib. dazu

Handwritten musical score for the second system, measures 4-6. The notation includes a treble clef with a circled 'p' dynamic marking. The melody consists of quarter notes: G4, A4, B4, C5, B4, A4, G4. The piano accompaniment includes a bass line with notes G2, A2, B2, C3, B2, A2, G2 and a right-hand part with notes G4, A4, B4, C5, B4, A4, G4. The piano part is marked 'Piano' and 'pizz'.

Handwritten musical notation on a four-staff system. The notation includes various notes, rests, and dynamic markings such as *f* and *passo*. There are also some scribbles and a circled symbol at the end of the system.

Handwritten musical notation on a four-staff system. The notation includes various notes, rests, and dynamic markings such as *f* and *passo*. There are also some scribbles and a circled symbol at the end of the system.

Primo Imperator

Handwritten musical score for the first system, featuring a treble clef staff with a key signature of one sharp (F#) and a common time signature (C). The notation includes various notes, rests, and slurs, with the title *Primo Imperator* written above. The second staff is a bass clef with a key signature of one sharp (F#) and a common time signature (C), containing a bass line with notes and rests. The third and fourth staves are empty.

Handwritten musical score for the second system, featuring a treble clef staff with a key signature of one sharp (F#) and a common time signature (C). The notation includes various notes, rests, and slurs. The second staff is a bass clef with a key signature of one sharp (F#) and a common time signature (C), containing a bass line with notes and rests. The third and fourth staves are empty.

Handwritten musical notation for the first system, consisting of three staves. The top staff contains a complex melodic line with many accidentals (sharps and flats) and slurs. The middle staff contains a few notes with accidentals. The bottom staff contains a few notes with accidentals. The system is divided into four measures by vertical bar lines.

Handwritten musical notation for the second system, consisting of three staves. The top staff contains a complex melodic line with many accidentals and slurs. The middle staff contains a few notes with accidentals. The bottom staff contains a few notes with accidentals. The system is divided into four measures by vertical bar lines.

Handwritten musical score for the first system. The top staff is in treble clef, starting with a forte (ff) dynamic. It contains a melodic line with many sixteenth notes, some beamed together, and several accents (^). The bottom two staves are in grand staff (treble and bass clefs), with piano accompaniment consisting of chords and single notes. A circled 'ff' is written in the piano part. The system is divided into three measures by vertical bar lines.

Handwritten musical score for the second system. The top staff continues the melodic line from the first system, with a 'dim' (diminuendo) marking above it. The piano accompaniment continues in the grand staff. The system is divided into three measures. There is a large 'x' mark below the piano part in the second measure.

Handwritten musical score for the first system, consisting of two measures. The notation includes a treble clef, a key signature of one sharp (F#), and a common time signature (C). The first measure is marked with a forte dynamic (*f*) and contains the handwritten text "Final Improvisation" above the staff. The second measure is marked with a mezzo-forte dynamic (*mf*). The score features complex chordal structures with many accidentals and slurs, and a bass line with rhythmic notation.

Handwritten musical score for the second system, also consisting of two measures. It continues the notation from the first system, featuring treble and bass clefs, a key signature of one sharp (F#), and a common time signature (C). The first measure is marked with a forte dynamic (*f*). The notation includes complex chordal structures with many accidentals and slurs, and a bass line with rhythmic notation.

Handwritten musical score for the first system, consisting of three staves. The top staff is in treble clef with a key signature of one flat (B-flat). The middle staff is in bass clef with a key signature of one flat (B-flat). The bottom staff is in bass clef with a key signature of one flat (B-flat). The music is divided into three measures. The first measure contains a melodic line in the treble clef and a bass line in the bass clef. The second and third measures contain rests in the treble clef and a bass line. A circled 'F' is written in the left margin of the first measure.

Handwritten musical score for the second system, consisting of three staves. The top staff is in treble clef with a key signature of one flat (B-flat). The middle staff is in bass clef with a key signature of one flat (B-flat). The bottom staff is in bass clef with a key signature of one flat (B-flat). The music is divided into three measures. The first measure contains chords in the treble clef and a bass line in the bass clef. The second and third measures contain rests in the treble clef and a bass line. A circled 'F' is written in the left margin of the first measure.

Handwritten musical score for the first system. The system consists of three staves. The top staff is in treble clef and contains a melodic line with various accidentals (sharps, flats, naturals) and triplets. The middle staff is in bass clef and contains a simple bass line with a few notes and rests. The bottom staff is also in bass clef and contains a simple bass line with a few notes and rests.

Handwritten musical score for the second system. The system consists of three staves. The top staff is in treble clef and contains a melodic line with various accidentals and a circled '4'. The middle staff is in bass clef and contains a simple bass line with a few notes and rests. The bottom staff is also in bass clef and contains a simple bass line with a few notes and rests.

Handwritten musical score for the first system. It consists of three staves: Treble Clef (top), Alto Clef (middle), and Bass Clef (bottom). The Treble staff contains a melodic line with a slur over the first two measures and a sharp sign (#) above the first measure. The Alto and Bass staves contain chordal accompaniment with notes and stems. The system concludes with a double bar line and a fermata-like symbol on the Treble staff.

Handwritten musical score for the second system. It consists of three staves: Treble Clef (top), Alto Clef (middle), and Bass Clef (bottom). The Treble staff contains a melodic line with multiple slurs and accents over the notes. The Alto and Bass staves contain chordal accompaniment. The system concludes with a double bar line and a fermata-like symbol on the Treble staff.

duin

1x D.C.
2x D.C. ad $\text{\textcircled{f}}$

2te D.C.
ad $\text{\textcircled{f}}$

duin

Pne

Full

1x D.C.
2x D.C. ad $\text{\textcircled{f}}$

rehearsal

Handwritten musical score for the first system. It consists of three staves. The top staff is a treble clef with a 2/2 time signature. The middle staff is a bass clef with a 2/2 time signature and a circled 'p' dynamic marking. The bottom staff is a bass clef with a circled 'p' dynamic marking. The music includes various notes, rests, and slurs. There are some annotations in the right margin, including a circled 'p' and some symbols.

Handwritten musical score for the second system. It consists of three staves. The top staff is a treble clef with a 2/2 time signature. The middle staff is a bass clef with a 2/2 time signature and a circled 'p' dynamic marking. The bottom staff is a bass clef with a circled 'p' dynamic marking. The music includes various notes, rests, and slurs. There are some annotations in the right margin, including a circled 'p' and some symbols.

Handwritten musical score for the first system. It features a treble clef, a key signature of one sharp (F#), and a common time signature (C). The score consists of four staves. The top staff contains a melodic line with notes and rests. The second staff has a bass clef and contains notes with a dynamic marking 'f' and a slur. The third staff has a bass clef and contains notes with a dynamic marking 'f' and a slur. The bottom staff has a bass clef and contains a rhythmic pattern of eighth notes. The system is divided into three measures.

Handwritten musical score for the second system. It features a treble clef, a key signature of two flats (Bb, Eb), and a common time signature (C). The score consists of four staves. The top staff contains a melodic line with notes and rests. The second staff has a bass clef and contains notes with a dynamic marking 'f' and a slur. The third staff has a bass clef and contains notes with a dynamic marking 'f' and a slur. The bottom staff has a bass clef and contains a rhythmic pattern of eighth notes. The system is divided into three measures.

Handwritten musical score for the first system. The top staff contains a melody line with notes and slurs. The second staff shows a piano accompaniment with chords and a slash. The third staff shows a bass line with notes and a slash. The fourth staff shows a bass line with notes and a slash.

Handwritten musical score for the second system. The top staff contains a melody line with notes and slurs. The second staff shows a piano accompaniment with chords and a slash. The third staff shows a bass line with notes and a slash. The fourth staff shows a bass line with notes and a slash.

Handwritten musical score for the first system. The top staff is in treble clef with a key signature of one sharp (F#). The bottom staff is in bass clef with a circled 'p' dynamic marking. The music consists of four measures. The first measure has a slur over a series of eighth notes. The second measure has a slur over a series of eighth notes with an accent (^) above the final note. The third and fourth measures continue the melodic line with slurs and various note values.

Handwritten musical score for the second system. The top staff is in treble clef. The bottom staff is in bass clef. The music consists of four measures. The first measure has a slur over a series of eighth notes. The second measure has a slur over a series of eighth notes. The third and fourth measures have slurs over eighth notes with accents (^) above them. The bass staff contains rhythmic notation with various note values and stems.

--	--	--	--

--	--	--	--

Handwritten musical notation for a guitar piece. The score is written on a grand staff with a treble clef, a key signature of one flat (B-flat), and a 4/4 time signature. The notation includes a melody line with slurs and a bass line with chords and a circled key signature.

Chords in the bass line: b^7 (circled), 7 , 7 , 7 , 7 .

Handwritten musical notation for a guitar piece. The score is written on a grand staff with a treble clef, a key signature of one sharp (F#), and a 4/4 time signature. The notation includes a melody line with slurs and a bass line with chords and a circled key signature.

Chords in the bass line: b^7 , 7 , 7 , b^7 , 7 , b^7 , 7 , 7 , 7 , b^7 .

Imposition

Handwritten musical notation for the first system, featuring a treble clef and a key signature of one sharp (F#). The notation includes a series of chords and notes, with some notes marked with an accent (^). The chords are grouped into four measures, numbered 1 through 4. The notes are: Measure 1: F#, G, A, B; Measure 2: C, D, E, F#; Measure 3: G, A, B, C; Measure 4: D, E, F#, G. There are also some additional notes and symbols like a wavy line and a sharp sign.

Handwritten musical notation for the second system, featuring a treble clef and a key signature of one sharp (F#). The notation includes a series of chords and notes, with some notes marked with an accent (^). The chords are grouped into six measures, numbered 1 through 6. The notes are: Measure 1: F#, G, A, B; Measure 2: C, D, E, F#; Measure 3: G, A, B, C; Measure 4: D, E, F#, G; Measure 5: A, B, C, D; Measure 6: E, F#, G, A. There are also some additional notes and symbols like a wavy line and a sharp sign.

Handwritten musical score for the first system, consisting of five measures. The notation includes a treble clef, a key signature of one flat (B-flat), and a common time signature (C). The first measure contains a melodic line with a slur and an accent (^) over the first note, and a bass line with a slur and a note. The subsequent four measures are primarily rests, with some notes in the bass line. The fifth measure features a complex chord structure with multiple notes and an accent (^) over the first note. The system is enclosed in a large bracket.

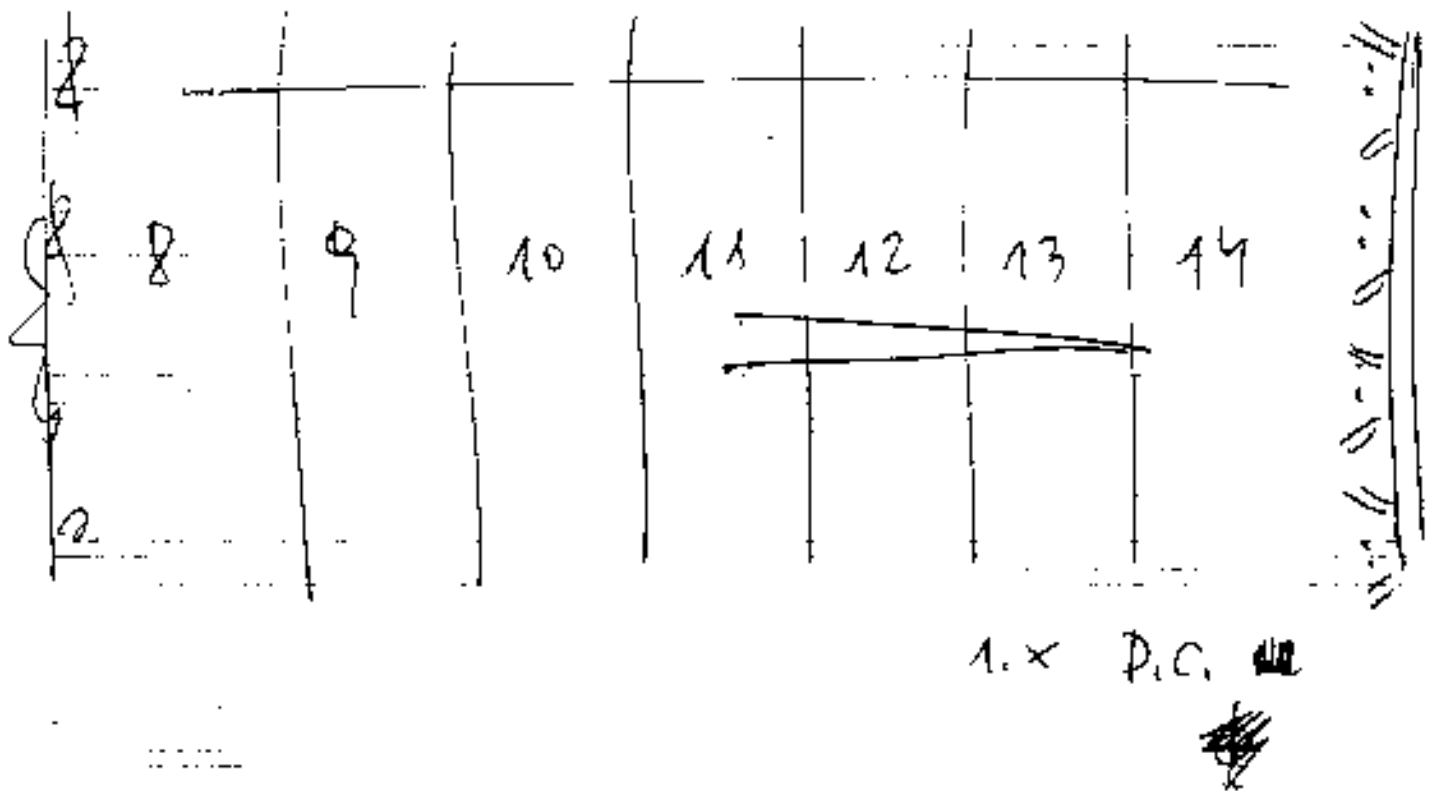
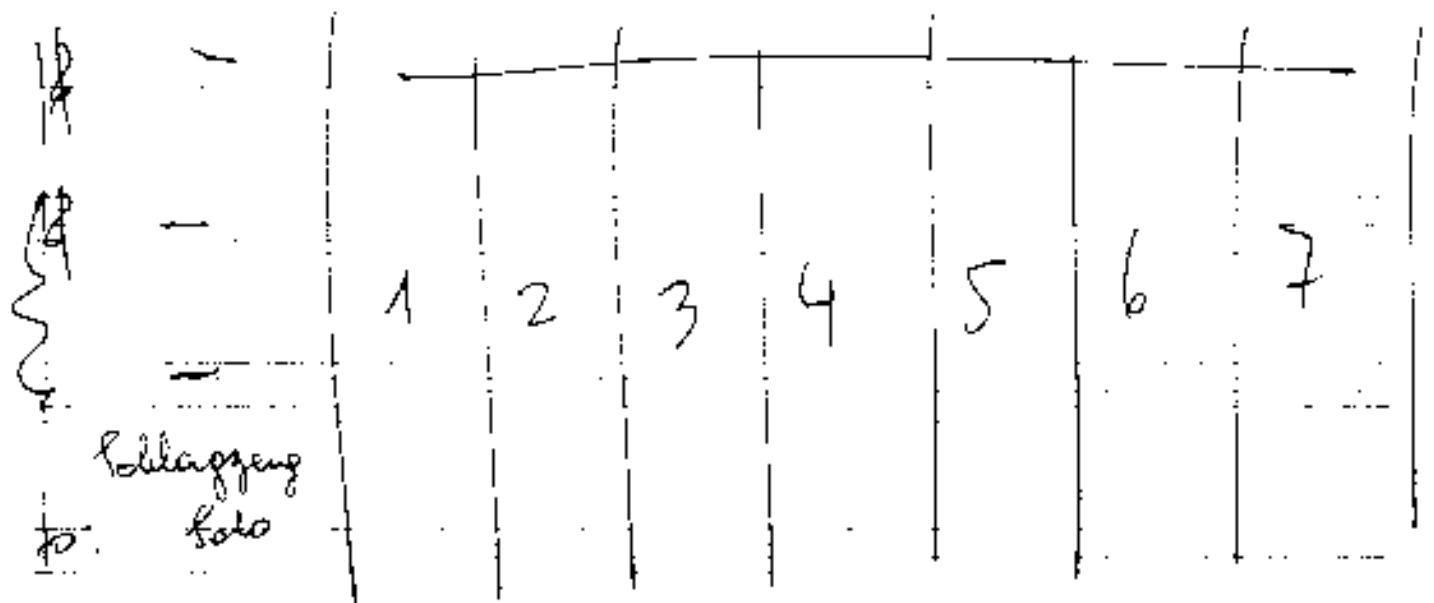
Handwritten musical score for the second system, also consisting of five measures. The notation includes a treble clef, a key signature of one flat (B-flat), and a common time signature (C). The first measure contains a melodic line with a slur and an accent (^) over the first note, and a bass line with a slur and a note. The subsequent four measures are primarily rests, with some notes in the bass line. The fifth measure features a complex chord structure with multiple notes and an accent (^) over the first note. The system is enclosed in a large bracket.

Handwritten musical score for the first system. The top staff (treble clef) contains a melodic line with notes and slurs. The bottom staff (bass clef) contains a rhythmic accompaniment. The score is divided into five measures. The first two measures contain notes, while the last three contain slanted lines. The first measure has a sharp sign above it.

Handwritten musical score for the second system. The top staff (treble clef) contains a melodic line with notes and slurs. The bottom staff (bass clef) contains a rhythmic accompaniment. The score is divided into two measures. The first measure contains notes, while the second contains slanted lines. The first measure has a sharp sign above it.

Handwritten musical score for the first system. The top staff is in treble clef and contains a melodic line with notes, rests, and dynamic markings such as \hat{p} and \hat{f} . The bottom staff is in bass clef and contains a bass line with notes and rests. The system is divided into four measures by vertical bar lines.

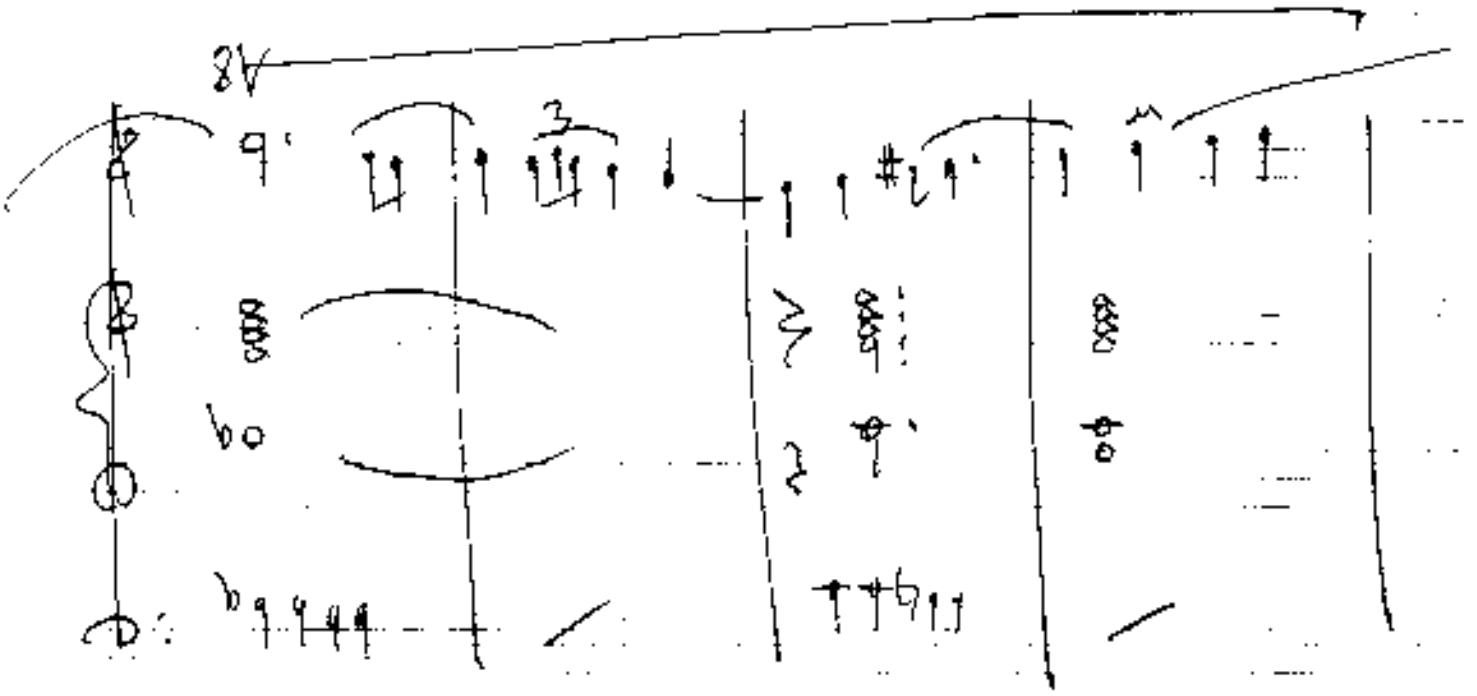
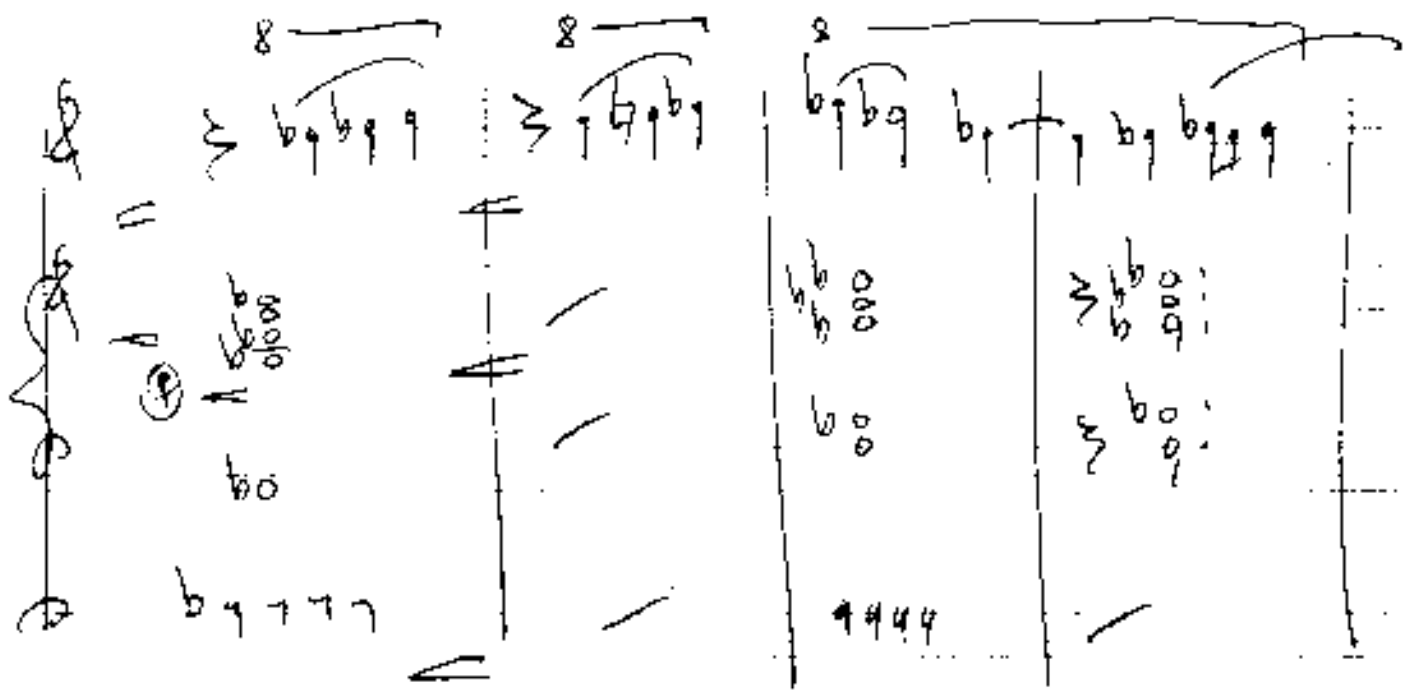
Handwritten musical score for the second system. The top staff is in treble clef and contains a melodic line with notes, rests, and dynamic markings such as \hat{p} and \hat{f} . The bottom staff is in bass clef and contains a bass line with notes and rests. The system is divided into four measures by vertical bar lines.



Handwritten musical score for the first system. It features a treble clef, a key signature of one sharp (F#), and a 3/4 time signature. The score consists of four measures. The first measure contains a circled '1' and a fermata. The second measure contains a circled '2' and a fermata. The third measure contains a circled '3' and a fermata. The fourth measure contains a circled '4' and a fermata. The notes are mostly whole notes with stems pointing up.

Handwritten musical score for the second system. It features a treble clef, a key signature of one sharp (F#), and a 3/4 time signature. The score consists of four measures. The first measure contains a circled '1' and a fermata. The second measure contains a circled '2' and a fermata. The third measure contains a circled '3' and a fermata. The fourth measure contains a circled '4' and a fermata. The notes are mostly whole notes with stems pointing up.

Handwritten musical score for the first system. It consists of three staves: Treble Clef (top), Alto Clef (middle), and Bass Clef (bottom). The key signature has one sharp (F#). The first staff contains a melodic line with notes G4, A4, B4, C5, D5, E5, F#5, G5, A5, B5, C6, D6, E6, F#6, G6, A6, B6, C7, D7, E7, F#7, G7, A7, B7, C8, D8, E8, F#8, G8, A8, B8, C9, D9, E9, F#9, G9, A9, B9, C10, D10, E10, F#10, G10, A10, B10, C11, D11, E11, F#11, G11, A11, B11, C12, D12, E12, F#12, G12, A12, B12, C13, D13, E13, F#13, G13, A13, B13, C14, D14, E14, F#14, G14, A14, B14, C15, D15, E15, F#15, G15, A15, B15, C16, D16, E16, F#16, G16, A16, B16, C17, D17, E17, F#17, G17, A17, B17, C18, D18, E18, F#18, G18, A18, B18, C19, D19, E19, F#19, G19, A19, B19, C20, D20, E20, F#20, G20, A20, B20, C21, D21, E21, F#21, G21, A21, B21, C22, D22, E22, F#22, G22, A22, B22, C23, D23, E23, F#23, G23, A23, B23, C24, D24, E24, F#24, G24, A24, B24, C25, D25, E25, F#25, G25, A25, B25, C26, D26, E26, F#26, G26, A26, B26, C27, D27, E27, F#27, G27, A27, B27, C28, D28, E28, F#28, G28, A28, B28, C29, D29, E29, F#29, G29, A29, B29, C30, D30, E30, F#30, G30, A30, B30, C31, D31, E31, F#31, G31, A31, B31, C32, D32, E32, F#32, G32, A32, B32, C33, D33, E33, F#33, G33, A33, B33, C34, D34, E34, F#34, G34, A34, B34, C35, D35, E35, F#35, G35, A35, B35, C36, D36, E36, F#36, G36, A36, B36, C37, D37, E37, F#37, G37, A37, B37, C38, D38, E38, F#38, G38, A38, B38, C39, D39, E39, F#39, G39, A39, B39, C40, D40, E40, F#40, G40, A40, B40, C41, D41, E41, F#41, G41, A41, B41, C42, D42, E42, F#42, G42, A42, B42, C43, D43, E43, F#43, G43, A43, B43, C44, D44, E44, F#44, G44, A44, B44, C45, D45, E45, F#45, G45, A45, B45, C46, D46, E46, F#46, G46, A46, B46, C47, D47, E47, F#47, G47, A47, B47, C48, D48, E48, F#48, G48, A48, B48, C49, D49, E49, F#49, G49, A49, B49, C50, D50, E50, F#50, G50, A50, B50, C51, D51, E51, F#51, G51, A51, B51, C52, D52, E52, F#52, G52, A52, B52, C53, D53, E53, F#53, G53, A53, B53, C54, D54, E54, F#54, G54, A54, B54, C55, D55, E55, F#55, G55, A55, B55, C56, D56, E56, F#56, G56, A56, B56, C57, D57, E57, F#57, G57, A57, B57, C58, D58, E58, F#58, G58, A58, B58, C59, D59, E59, F#59, G59, A59, B59, C60, D60, E60, F#60, G60, A60, B60, C61, D61, E61, F#61, G61, A61, B61, C62, D62, E62, F#62, G62, A62, B62, C63, D63, E63, F#63, G63, A63, B63, C64, D64, E64, F#64, G64, A64, B64, C65, D65, E65, F#65, G65, A65, B65, C66, D66, E66, F#66, G66, A66, B66, C67, D67, E67, F#67, G67, A67, B67, C68, D68, E68, F#68, G68, A68, B68, C69, D69, E69, F#69, G69, A69, B69, C70, D70, E70, F#70, G70, A70, B70, C71, D71, E71, F#71, G71, A71, B71, C72, D72, E72, F#72, G72, A72, B72, C73, D73, E73, F#73, G73, A73, B73, C74, D74, E74, F#74, G74, A74, B74, C75, D75, E75, F#75, G75, A75, B75, C76, D76, E76, F#76, G76, A76, B76, C77, D77, E77, F#77, G77, A77, B77, C78, D78, E78, F#78, G78, A78, B78, C79, D79, E79, F#79, G79, A79, B79, C80, D80, E80, F#80, G80, A80, B80, C81, D81, E81, F#81, G81, A81, B81, C82, D82, E82, F#82, G82, A82, B82, C83, D83, E83, F#83, G83, A83, B83, C84, D84, E84, F#84, G84, A84, B84, C85, D85, E85, F#85, G85, A85, B85, C86, D86, E86, F#86, G86, A86, B86, C87, D87, E87, F#87, G87, A87, B87, C88, D88, E88, F#88, G88, A88, B88, C89, D89, E89, F#89, G89, A89, B89, C90, D90, E90, F#90, G90, A90, B90, C91, D91, E91, F#91, G91, A91, B91, C92, D92, E92, F#92, G92, A92, B92, C93, D93, E93, F#93, G93, A93, B93, C94, D94, E94, F#94, G94, A94, B94, C95, D95, E95, F#95, G95, A95, B95, C96, D96, E96, F#96, G96, A96, B96, C97, D97, E97, F#97, G97, A97, B97, C98, D98, E98, F#98, G98, A98, B98, C99, D99, E99, F#99, G99, A99, B99, C100, D100, E100, F#100, G100, A100, B100, C101, D101, E101, F#101, G101, A101, B101, C102, D102, E102, F#102, G102, A102, B102, C103, D103, E103, F#103, G103, A103, B103, C104, D104, E104, F#104, G104, A104, B104, C105, D105, E105, F#105, G105, A105, B105, C106, D106, E106, F#106, G106, A106, B106, C107, D107, E107, F#107, G107, A107, B107, C108, D108, E108, F#108, G108, A108, B108, C109, D109, E109, F#109, G109, A109, B109, C110, D110, E110, F#110, G110, A110, B110, C111, D111, E111, F#111, G111, A111, B111, C112, D112, E112, F#112, G112, A112, B112, C113, D113, E113, F#113, G113, A113, B113, C114, D114, E114, F#114, G114, A114, B114, C115, D115, E115, F#115, G115, A115, B115, C116, D116, E116, F#116, G116, A116, B116, C117, D117, E117, F#117, G117, A117, B117, C118, D118, E118, F#118, G118, A118, B118, C119, D119, E119, F#119, G119, A119, B119, C120, D120, E120, F#120, G120, A120, B120, C121, D121, E121, F#121, G121, A121, B121, C122, D122, E122, F#122, G122, A122, B122, C123, D123, E123, F#123, G123, A123, B123, C124, D124, E124, F#124, G124, A124, B124, C125, D125, E125, F#125, G125, A125, B125, C126, D126, E126, F#126, G126, A126, B126, C127, D127, E127, F#127, G127, A127, B127, C128, D128, E128, F#128, G128, A128, B128, C129, D129, E129, F#129, G129, A129, B129, C130, D130, E130, F#130, G130, A130, B130, C131, D131, E131, F#131, G131, A131, B131, C132, D132, E132, F#132, G132, A132, B132, C133, D133, E133, F#133, G133, A133, B133, C134, D134, E134, F#134, G134, A134, B134, C135, D135, E135, F#135, G135, A135, B135, C136, D136, E136, F#136, G136, A136, B136, C137, D137, E137, F#137, G137, A137, B137, C138, D138, E138, F#138, G138, A138, B138, C139, D139, E139, F#139, G139, A139, B139, C140, D140, E140, F#140, G140, A140, B140, C141, D141, E141, F#141, G141, A141, B141, C142, D142, E142, F#142, G142, A142, B142, C143, D143, E143, F#143, G143, A143, B143, C144, D144, E144, F#144, G144, A144, B144, C145, D145, E145, F#145, G145, A145, B145, C146, D146, E146, F#146, G146, A146, B146, C147, D147, E147, F#147, G147, A147, B147, C148, D148, E148, F#148, G148, A148, B148, C149, D149, E149, F#149, G149, A149, B149, C150, D150, E150, F#150, G150, A150, B150, C151, D151, E151, F#151, G151, A151, B151, C152, D152, E152, F#152, G152, A152, B152, C153, D153, E153, F#153, G153, A153, B153, C154, D154, E154, F#154, G154, A154, B154, C155, D155, E155, F#155, G155, A155, B155, C156, D156, E156, F#156, G156, A156, B156, C157, D157, E157, F#157, G157, A157, B157, C158, D158, E158, F#158, G158, A158, B158, C159, D159, E159, F#159, G159, A159, B159, C160, D160, E160, F#160, G160, A160, B160, C161, D161, E161, F#161, G161, A161, B161, C162, D162, E162, F#162, G162, A162, B162, C163, D163, E163, F#163, G163, A163, B163, C164, D164, E164, F#164, G164, A164, B164, C165, D165, E165, F#165, G165, A165, B165, C166, D166, E166, F#166, G166, A166, B166, C167, D167, E167, F#167, G167, A167, B167, C168, D168, E168, F#168, G168, A168, B168, C169, D169, E169, F#169, G169, A169, B169, C170, D170, E170, F#170, G170, A170, B170, C171, D171, E171, F#171, G171, A171, B171, C172, D172, E172, F#172, G172, A172, B172, C173, D173, E173, F#173, G173, A173, B173, C174, D174, E174, F#174, G174, A174, B174, C175, D175, E175, F#175, G175, A175, B175, C176, D176, E176, F#176, G176, A176, B176, C177, D177, E177, F#177, G177, A177, B177, C178, D178, E178, F#178, G178, A178, B178, C179, D179, E179, F#179, G179, A179, B179, C180, D180, E180, F#180, G180, A180, B180, C181, D181, E181, F#181, G181, A181, B181, C182, D182, E182, F#182, G182, A182, B182, C183, D183, E183, F#183, G183, A183, B183, C184, D184, E184, F#184, G184, A184, B184, C185, D185, E185, F#185, G185, A185, B185, C186, D186, E186, F#186, G186, A186, B186, C187, D187, E187, F#187, G187, A187, B187, C188, D188, E188, F#188, G188, A188, B188, C189, D189, E189, F#189, G189, A189, B189, C190, D190, E190, F#190, G190, A190, B190, C191, D191, E191, F#191, G191, A191, B191, C192, D192, E192, F#192, G192, A192, B192, C193, D193, E193, F#193, G193, A193, B193, C194, D194, E194, F#194, G194, A194, B194, C195, D195, E195, F#195, G195, A195, B195, C196, D196, E196, F#196, G196, A196, B196, C197, D197, E197, F#197, G197, A197, B197, C198, D198, E198, F#198, G198, A198, B198, C199, D199, E199, F#199, G199, A199, B199, C200, D200, E200, F#200, G200, A200, B200, C201, D201, E201, F#201, G201, A201, B201, C202, D202, E202, F#202, G202, A202, B202, C203, D203, E203, F#203, G203, A203, B203, C204, D204, E204, F#204, G204, A204, B204, C205, D205, E205, F#205, G205, A205, B205, C206, D206, E206, F#206, G206, A206, B206, C207, D207, E207, F#207, G207, A207, B207, C208, D208, E208, F#208, G208, A208, B208, C209, D209, E209, F#209, G209, A209, B209, C210, D210, E210, F#210, G210, A210, B210, C211, D211, E211, F#211, G211, A211, B211, C212, D212, E212, F#212, G212, A212, B212, C213, D213, E213, F#213, G213, A213, B213, C214, D214, E214, F#214, G214, A214, B214, C215, D215, E215, F#215, G215, A215, B215, C216, D216, E216, F#216, G216, A216, B216, C217, D217, E217, F#217, G217, A217, B217, C218, D218, E218, F#218, G218, A218, B218, C219, D219, E219, F#219, G219, A219, B219, C220, D220, E220, F#220, G220, A220, B220, C221, D221, E221, F#221, G221, A221, B221, C222, D222, E222, F#222, G222, A222, B222, C223, D223, E223, F#223, G223, A223, B223, C224, D224, E224, F#224, G224, A224, B224, C225, D225, E225, F#225, G225, A225, B225, C226, D226, E226, F#226, G226, A226, B226, C227, D227, E227, F#227, G227, A227, B227, C228, D228, E228, F#228, G228, A228, B228, C229, D229, E229, F#229, G229, A229, B229, C230, D230, E230, F#230, G230, A230, B230, C231, D231, E231, F#231, G231, A231, B231, C232, D232, E232, F#232, G232, A232, B232, C233, D233, E233, F#233, G233, A233, B233, C234, D234, E234, F#234, G234, A234, B234, C235, D235, E235, F#235, G235, A235, B235, C236, D236, E236, F#236, G236, A236, B236, C237, D237, E237, F#237, G237, A237, B237, C238, D238, E238, F#238, G238, A238, B238, C239, D239, E239, F#239, G239, A239, B239, C240, D240, E240, F#240, G240, A240, B240, C241, D241, E241, F#241, G241, A241, B241, C242, D242, E242, F#242, G242, A242, B242, C243, D243, E243, F#243, G243, A243, B243, C244, D244, E244, F#244, G244, A244, B244, C245, D245, E245, F#245, G245, A245, B245, C246, D246, E246, F#246, G246, A246, B246, C247, D247, E247, F#247, G247, A247, B247, C248, D248, E248, F#248, G248, A248, B248, C249, D249, E249, F#249, G249, A249, B249, C250, D250, E250, F#250, G250, A250, B250, C251, D251, E251, F#251, G251, A251, B251, C252, D252, E252, F#252, G252, A252, B252, C253, D253, E253, F#253, G253, A253, B253, C254, D254, E254, F#254, G254, A254, B254, C255, D255, E255, F#255, G255, A255, B255, C256, D256, E256, F#256, G256, A256, B256, C257, D257, E257, F#257, G257, A257, B257, C258, D258, E258, F#258, G258, A258, B258, C259, D259, E259, F#259, G259, A259, B259, C260, D260, E260, F#260, G260, A260, B260, C261, D261, E261, F#261, G261, A261, B261, C262, D262, E262, F#262, G262, A262, B262, C263, D263, E263, F#263, G263, A263, B263, C264, D264, E264, F#264, G264, A264, B264, C265, D265, E265, F#265, G265, A265, B265, C266, D266, E266, F#266, G266, A266, B266, C267, D267, E267, F#267, G267, A267, B267, C268, D268, E268, F#268, G268, A268, B268, C269, D269, E269, F#269, G269, A269, B269, C270, D270, E270, F#270, G270, A270, B270, C271, D271, E271, F#271, G271, A271, B271, C272, D272, E272, F#272, G272, A272, B272, C273, D273, E273, F#273, G273, A273, B273, C274, D274, E274, F#274, G274, A274, B274, C275, D275, E275, F#275, G275, A275, B275, C276, D276, E276, F#276, G276, A276, B276, C277, D277, E277, F#277, G277, A277, B277, C278, D278, E278, F#278, G278, A278, B278, C279, D279, E279, F#279, G279, A279, B279, C280, D280, E280, F#280, G280, A280, B280, C281, D281, E281, F#281, G281, A281, B281, C282, D282, E282, F#282, G282, A282, B282, C283, D283, E283, F#283, G283, A283, B283, C284, D284, E284, F#284, G284, A284, B284, C285, D285, E285, F#285, G285, A285, B285, C286, D286, E286, F#286, G286, A286, B286, C287, D287, E287, F#287, G287, A287, B287, C288, D288, E288, F#288, G288, A288, B288, C289, D289, E289, F#289, G289, A289, B289, C290, D290, E290, F#290, G290, A290, B290, C291, D291, E291, F#291, G291, A291, B291, C292, D292, E292, F#292, G292, A292, B292, C293, D293, E293, F#293, G293, A293, B293, C294, D294, E294, F#294, G294, A294, B294, C295, D295, E295, F#295, G295, A295, B295, C296, D296, E296, F#296, G296, A296, B296, C297, D297, E297, F#297, G297, A297, B297, C298, D298, E298, F#298, G298, A298, B298, C299, D299, E299, F#299, G299, A299, B299, C300, D300, E300, F#300, G300, A300, B300, C301, D301, E301, F#301, G301, A301, B301, C302, D302, E302, F#302, G302, A302, B302, C303, D303, E303, F#303, G303, A303, B303, C304, D304, E304, F#304, G304, A304, B304, C305, D305, E305, F#305, G305, A305, B305, C306, D306, E306, F#306, G306, A306, B306, C307, D307, E307, F#307, G307, A307, B307, C308, D308, E308, F#308, G308, A308, B308, C309, D309, E309, F#309, G309, A309, B309, C310, D310, E310, F#310, G310, A310, B310, C311, D311, E311, F#311, G311, A311, B311, C312, D312, E312, F#312, G312, A312, B312, C313, D313, E313, F#313, G313, A313, B313, C314, D314, E314, F#314, G314, A314, B314, C315, D315, E315, F#315, G315, A315, B315, C316, D316, E316, F#316, G316, A316, B316, C317, D317, E317, F#317, G317, A317, B317, C318, D318, E318, F#318, G318, A318, B318, C319, D319, E319, F#319, G319, A319, B319, C320, D320, E320, F#320, G320, A320, B320, C321, D321, E321, F#321, G321, A321, B321, C322, D322, E322, F#322, G322, A322, B322, C323, D323, E323, F#323, G323, A323, B323, C324, D324, E324, F#324, G324, A324, B324, C325, D325, E325, F#325, G325, A325, B325, C326, D326, E326, F#326, G326, A326, B326, C327, D327, E327, F#327, G327, A327, B327, C328, D328, E328, F#328, G328, A328, B328, C329, D329, E329, F#329, G329, A329, B329, C330, D330, E330, F#330, G330, A330, B330, C331, D331, E331, F#331, G331, A331, B331, C332, D332, E332, F#332, G332, A332, B332, C333, D333, E333, F#333, G333, A333, B333, C334, D334, E334, F#334, G334, A334, B334, C335, D335, E335, F#335, G335, A335, B335, C336, D336, E336, F#336, G336, A336, B336, C337, D337, E337, F#337, G337, A337, B337, C338, D338, E338, F#338, G338, A338, B338, C339, D339, E339, F#339, G339, A339, B339, C340, D340, E340, F#340, G340, A340, B340, C341, D341, E341, F#341, G341, A341, B341, C342, D342, E342, F#342, G342, A342, B342, C343, D343, E343, F#343, G343, A343, B343, C344, D344, E344, F#344, G344, A344, B344, C345, D345, E345, F#345, G345, A345, B345, C346, D346, E346, F#346, G346, A346, B346, C347, D347, E347, F#347, G347, A347, B347, C348, D348, E348, F#348, G348, A348, B348, C349, D349, E349, F#349, G349, A349, B349, C350, D350, E350, F#350, G350, A350, B350, C351, D351, E351, F#351, G351, A351, B351, C352, D352, E352, F#352, G352, A352, B352, C353, D353, E353, F#353, G353, A353, B353, C354, D354, E354, F#354, G354, A354, B354, C355, D355, E355, F#355, G355, A355, B355, C356, D356, E356, F#356, G356, A356, B356, C357, D357, E357, F#357, G357, A357, B357, C358, D358, E358, F#358, G358, A358, B358, C359, D359, E359, F#359, G359, A359, B359, C360, D360, E360, F#360, G360, A360, B360, C361, D361, E361, F#361, G361, A361, B361, C362, D362, E362, F#362, G362, A362, B362, C363, D363, E363, F#363, G363, A363, B363, C364, D364, E364, F#364, G364, A3



Handwritten musical score for the first system, consisting of four staves. A bracket above the first staff is labeled with the number 8. The notation includes notes, rests, and various accidentals (sharps, flats, and naturals) across the measures.

Handwritten musical score for the second system, also consisting of four staves. A bracket above the first staff is labeled with the number 8. The notation includes notes, rests, and various accidentals, continuing the piece from the first system.

moder. Quod.

Handwritten musical score on a four-staff system. The top staff contains a treble clef, a key signature of one sharp (F#), and a wavy line with notes. The second staff contains a bass clef, a key signature of one sharp (F#), and a sequence of notes. The third and fourth staves contain rhythmic markings and diagonal slashes. The number '1944' is written at the bottom left.

Handwritten musical score on a four-staff system. The top staff contains a treble clef, a key signature of one sharp (F#), and notes. The second staff contains a bass clef, a key signature of one sharp (F#), and notes. The third and fourth staves contain notes and a large wavy line. A vertical line is drawn across the staves.