

L.v. BEETHOVEN



W.A. MOZART



NOTENHEFT

F. SCHUBERT



J. HAYDN



J. STRAUSS



Verlagsgesellschaft für Musikverlage, 1000 Wien, Austria
and other countries, including the United States.

MADE IN AUSTRIA

①

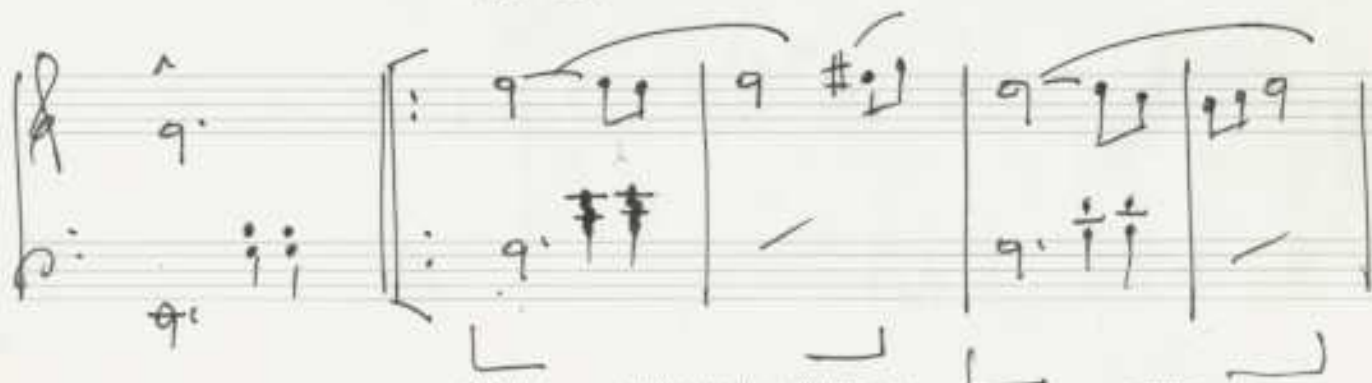
Pedal

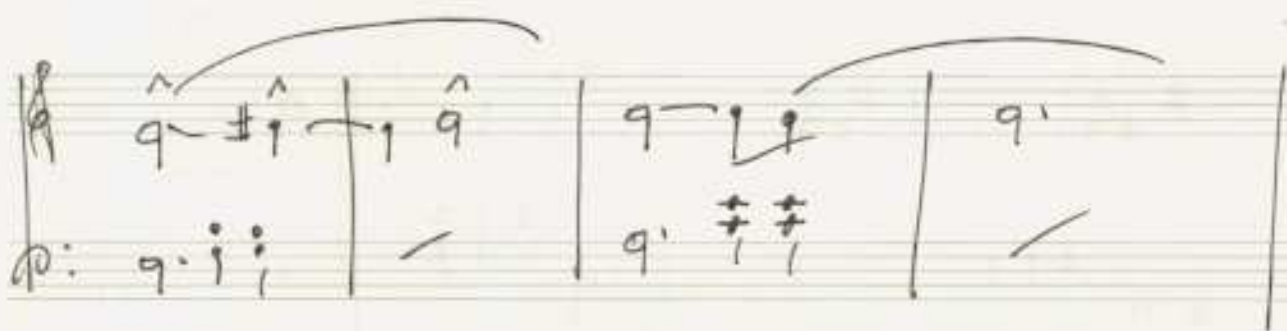
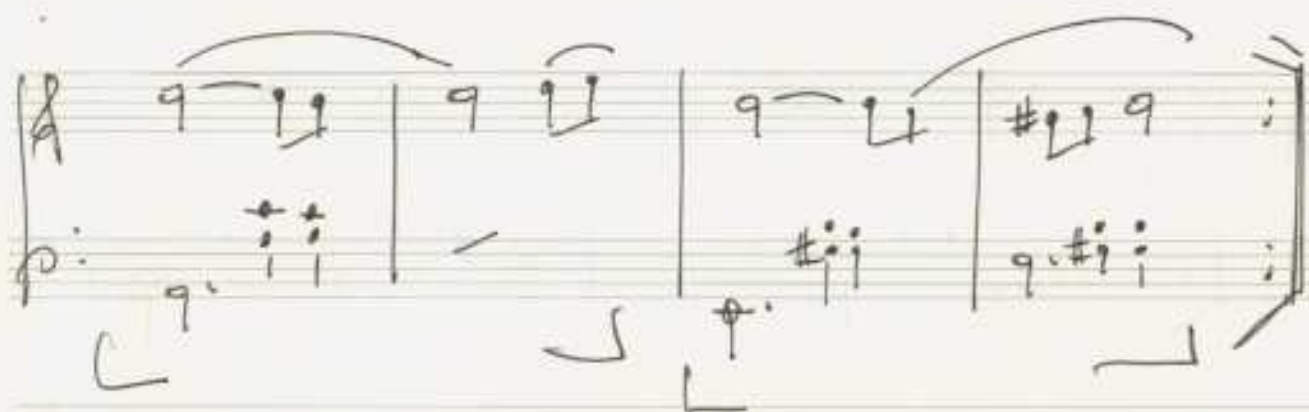
Pedal aus

Mod.

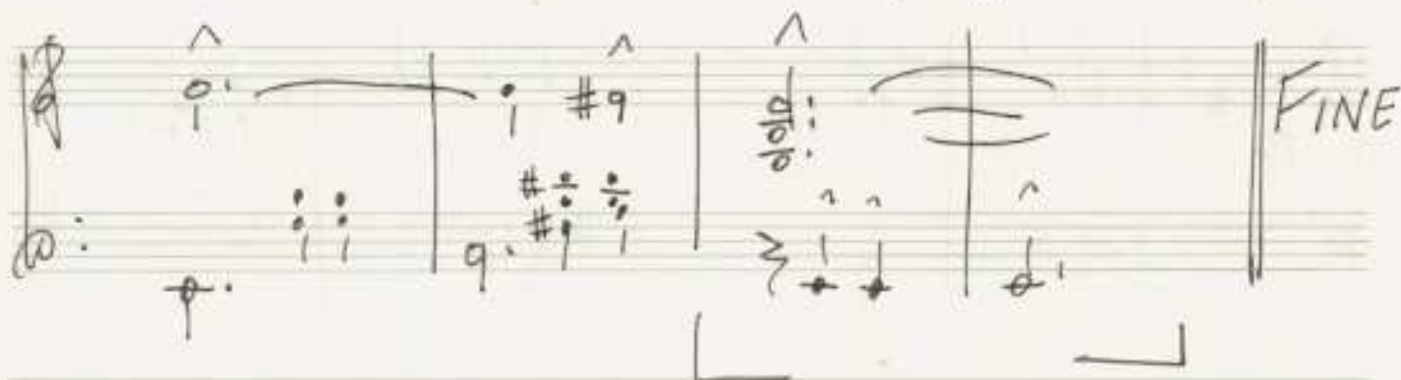


breit





(letztes mit + ^)



marcato

weiter werden

(poco rit)

ruhig (rit)

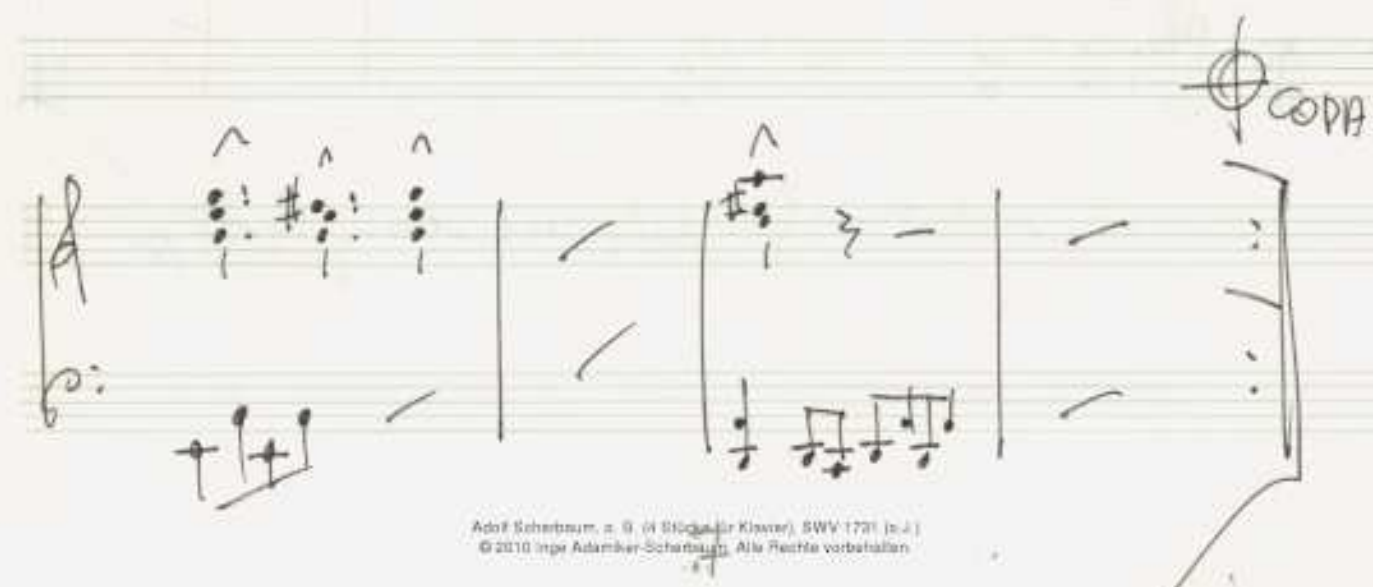
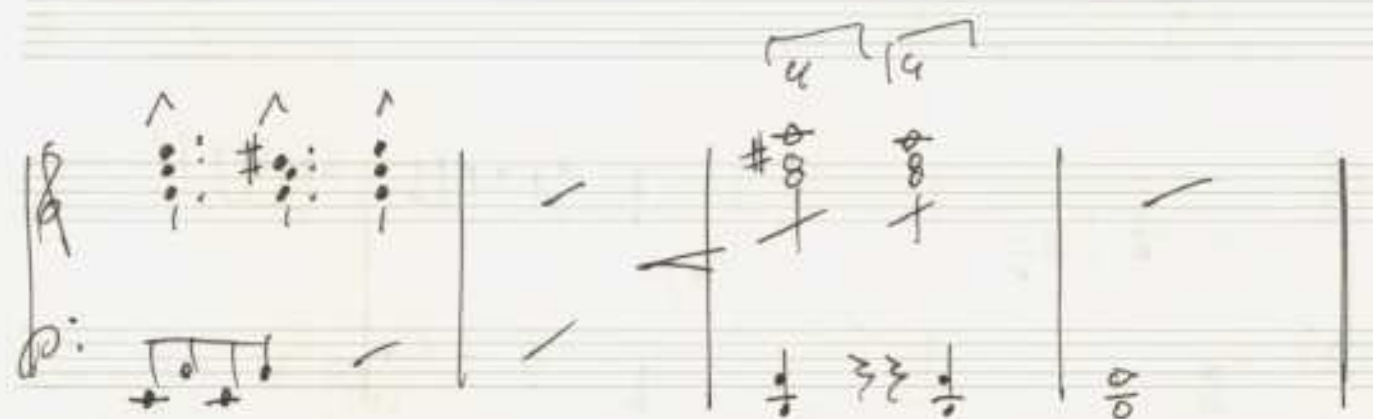
(rit +okin)

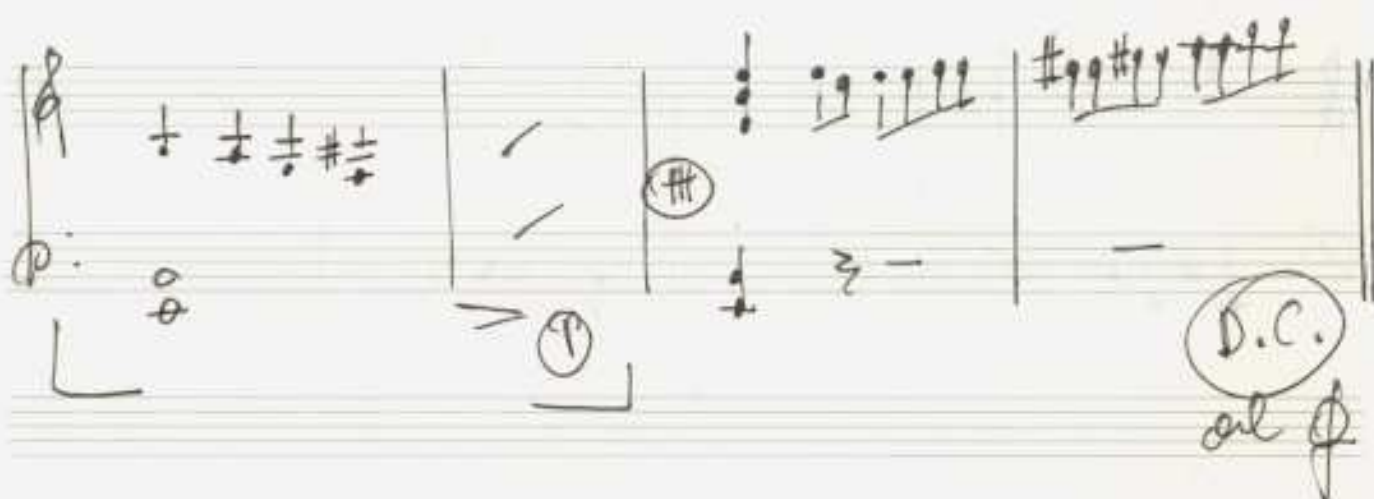
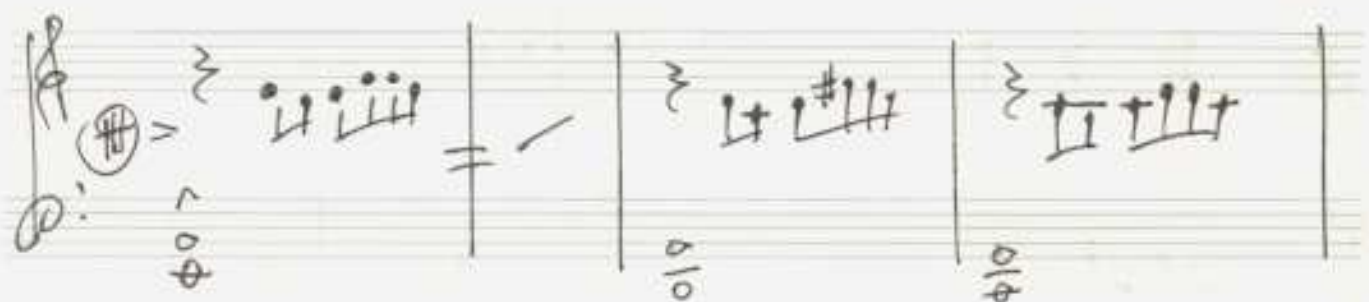
sehr
rassch

2

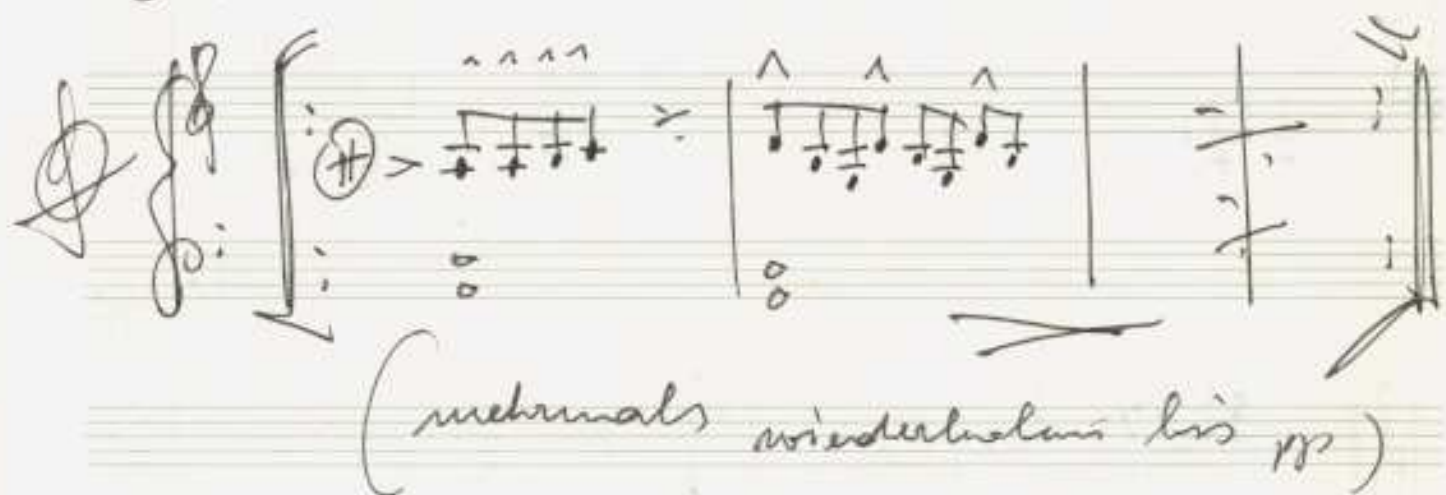








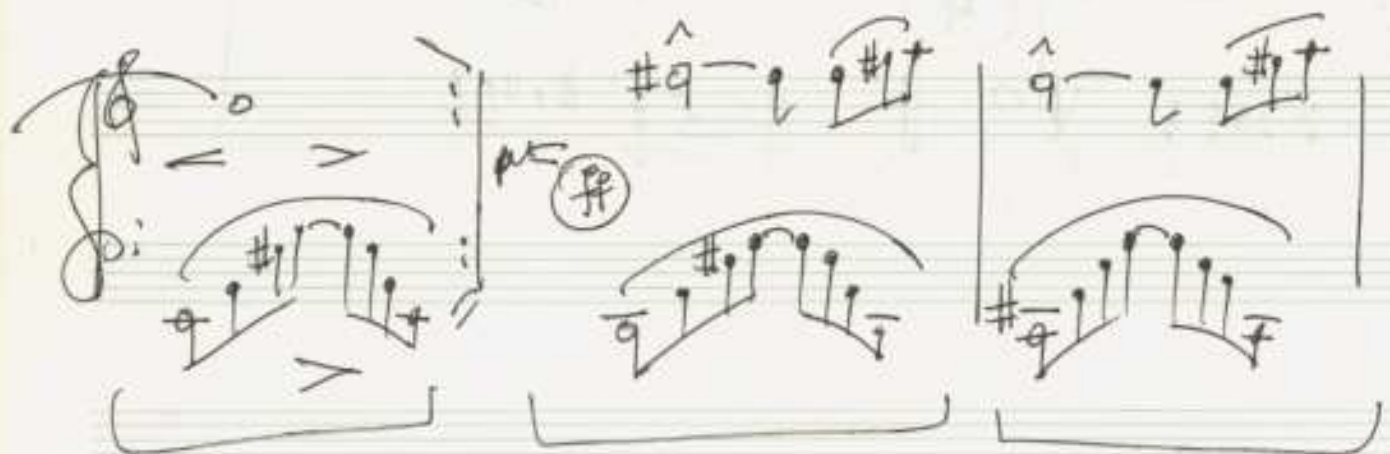
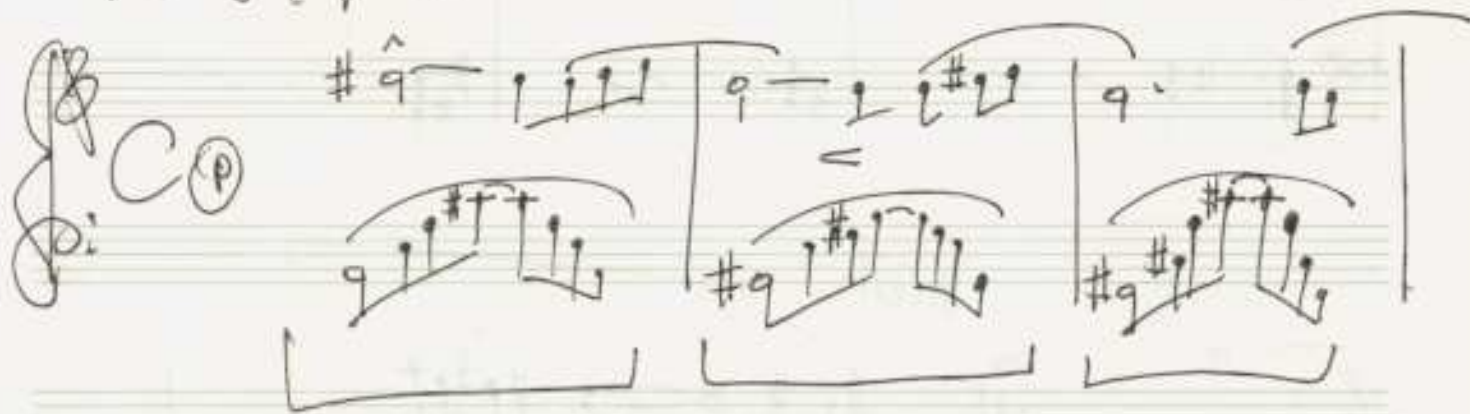
Coro (dün)





ruhig (frei)

3



D.C.

Handwritten musical notation for a piece marked D.C. The notation is on a grand staff with treble and bass clefs. The first measure has an accent (>) over a quarter note G and a sharp sign (#) over a quarter note A. The second measure has a whole note C. The third measure has a half note D with a circled 'p' (piano) dynamic marking. The fourth measure has a whole note E. The piece ends with a double bar line.

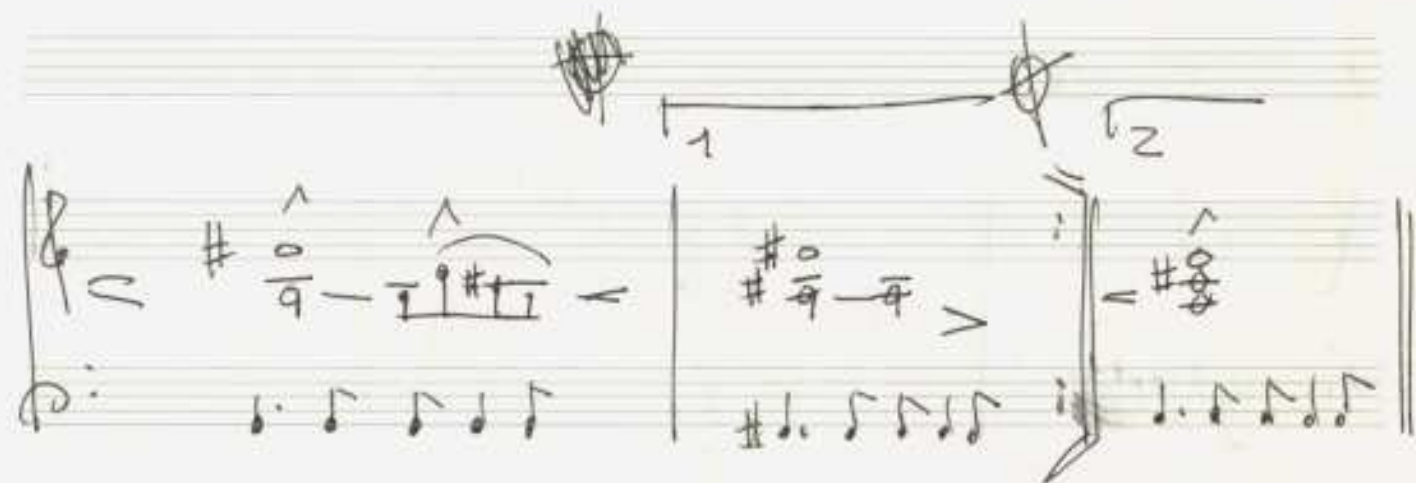
zart

Handwritten musical notation for a piece marked 'zart'. The notation is on a grand staff with treble and bass clefs. The first measure has a half note G with a sharp sign (#) and a half note A with a sharp sign (#). The second measure has a half note B with a sharp sign (#) and a half note C with a sharp sign (#). The third measure has a half note D with a sharp sign (#) and a half note E with a sharp sign (#). The fourth measure has a half note F with a sharp sign (#) and a half note G with a sharp sign (#). The piece ends with a double bar line.

Handwritten musical notation for a piece marked 'breit'. The notation is on a grand staff with treble and bass clefs. The first measure has a half note G with a sharp sign (#) and a half note A with a sharp sign (#). The second measure has a half note B with a sharp sign (#) and a half note C with a sharp sign (#). The third measure has a half note D with a sharp sign (#) and a half note E with a sharp sign (#). The fourth measure has a half note F with a sharp sign (#) and a half note G with a sharp sign (#). The piece ends with a double bar line.

(4)

ganzig



Handwritten musical notation for a piano piece. The score is written on two staves (treble and bass clef). The key signature is one sharp (F#). The notation includes various chords, arpeggios, and melodic lines. A bracket labeled '1' spans the first measure, and a bracket labeled '2' spans the second measure. The piece ends with a double bar line.

Handwritten musical notation for a piano piece. The score is written on two staves (treble and bass clef). The key signature is one sharp (F#). The notation includes various chords, arpeggios, and melodic lines. The piece ends with a double bar line.

Handwritten musical notation for a piano piece. The score is written on two staves (treble and bass clef). The key signature is one sharp (F#). The notation includes various chords, arpeggios, and melodic lines. The piece ends with a double bar line. The text "gut - dein" is written above the staff, and "D.C." is circled in the right margin.

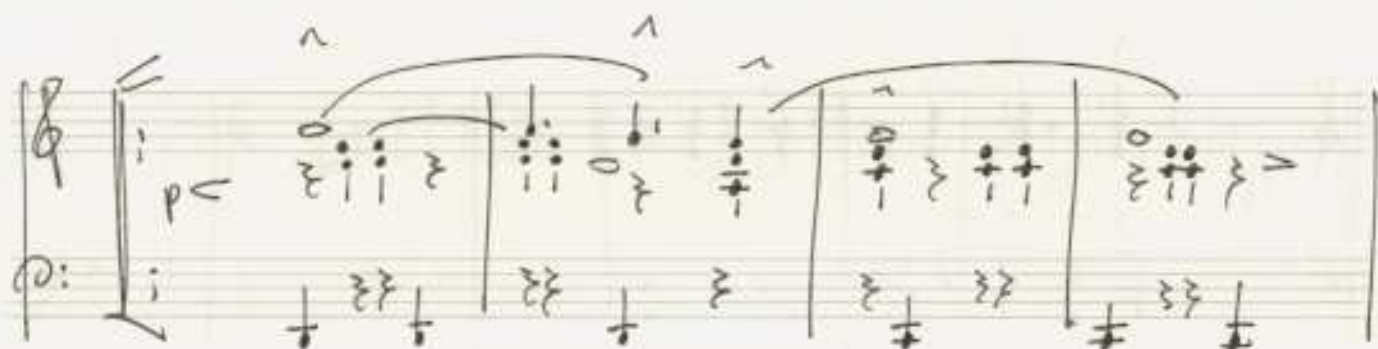
Centos

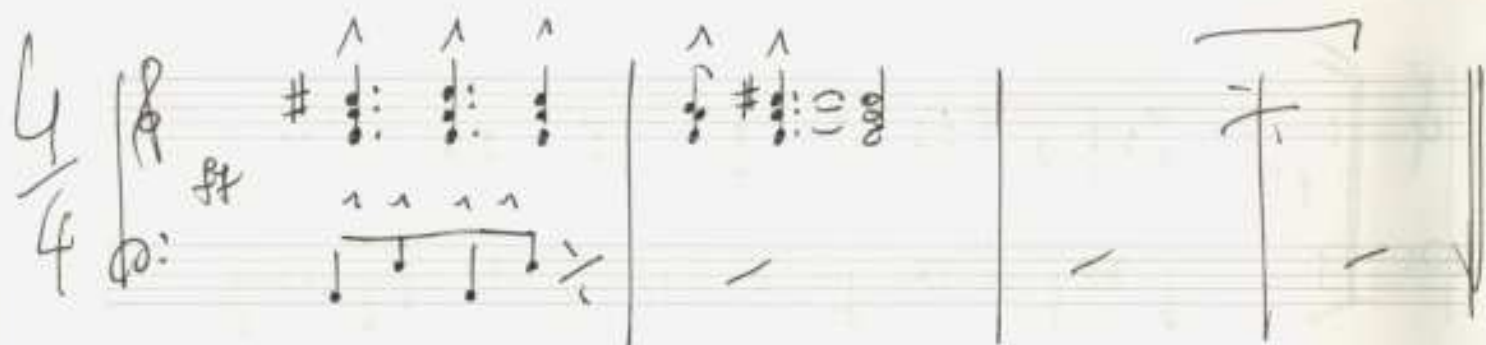
Handwritten musical notation for a piano piece. The score is written on two staves (treble and bass clef). The key signature is one sharp (F#). The notation includes various chords, arpeggios, and melodic lines. The piece ends with a double bar line.

Handwritten musical notation for a piano piece. The score is written on two staves (treble and bass clef). The key signature is one sharp (F#). The notation includes various chords, arpeggios, and melodic lines. The piece ends with a double bar line.

5

grasso







Handwritten musical notation for the first system. The left staff is in 4/4 time, marked with a treble clef and a key signature of one sharp (F#). The right staff is in 4/4 time, marked with a bass clef and a key signature of one sharp (F#). The notation includes various chords and melodic lines, with some notes marked with accents (^) and a circled 'ff' (fortissimo) marking.

Handwritten musical notation for the second system. The left staff is in 4/4 time, marked with a treble clef and a key signature of one sharp (F#). The right staff is in 4/4 time, marked with a bass clef and a key signature of one sharp (F#). The notation includes various chords and melodic lines, with some notes marked with accents (^) and a circled 'ff' (fortissimo) marking.

Handwritten musical notation for the third system. The left staff is in 4/4 time, marked with a treble clef and a key signature of one sharp (F#). The right staff is in 4/4 time, marked with a bass clef and a key signature of one sharp (F#). The notation includes various chords and melodic lines, with some notes marked with accents (^) and a circled 'ff' (fortissimo) marking.

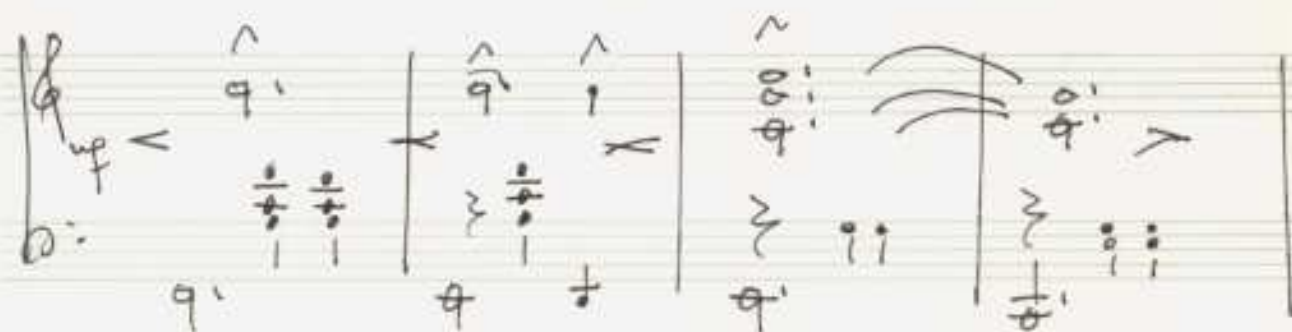
Handwritten musical notation for the fourth system. The left staff is in 4/4 time, marked with a treble clef and a key signature of one sharp (F#). The right staff is in 4/4 time, marked with a bass clef and a key signature of one sharp (F#). The notation includes various chords and melodic lines, with some notes marked with accents (^) and a circled 'ff' (fortissimo) marking.

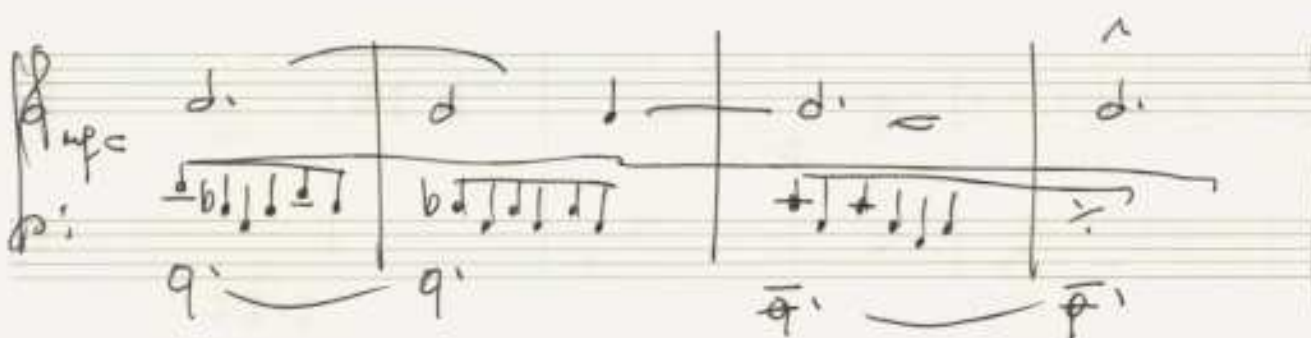
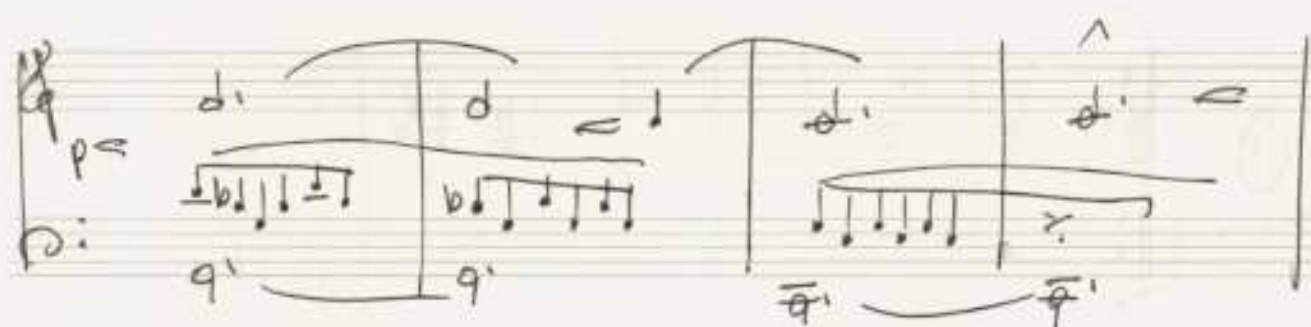
auer. —

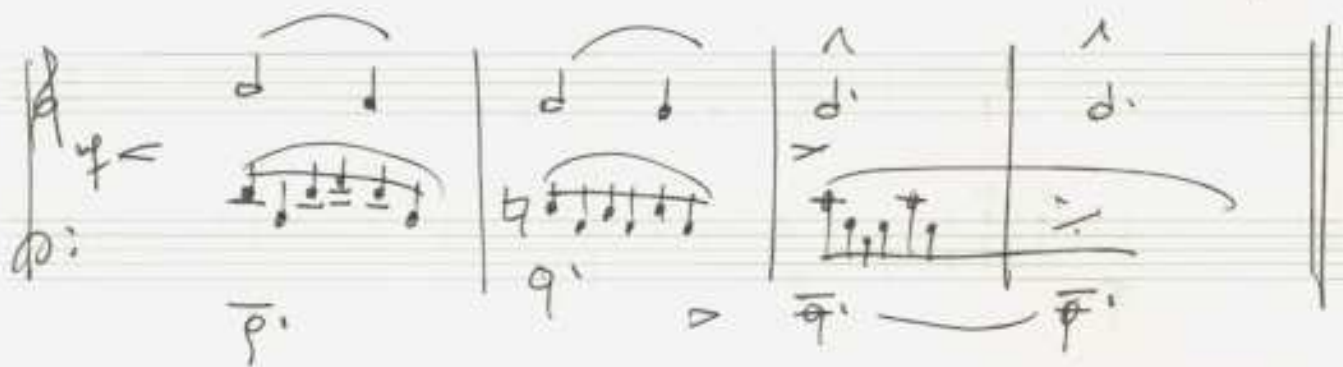
mehrmals wiederholen

⑥

frei (ruling) (frei gestalten)





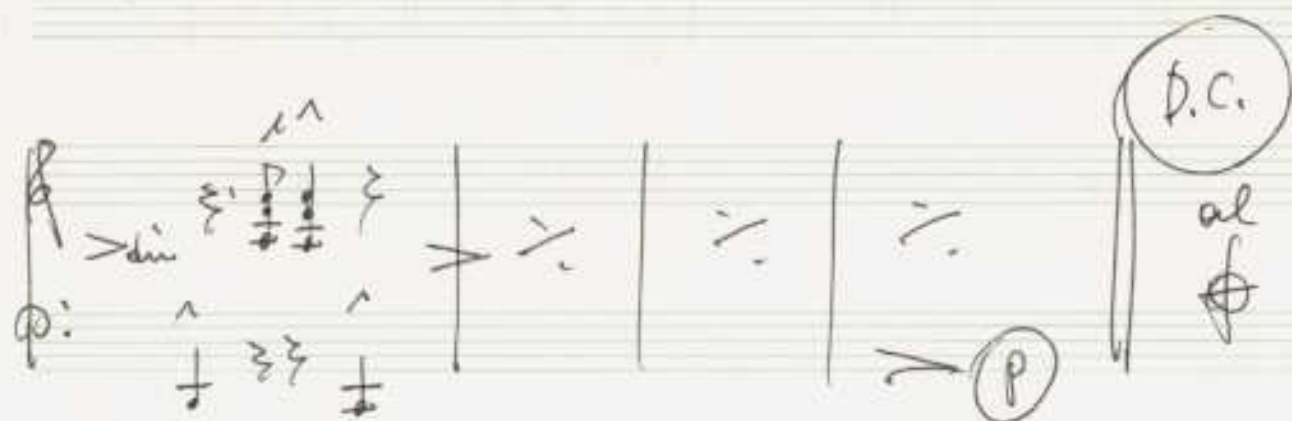
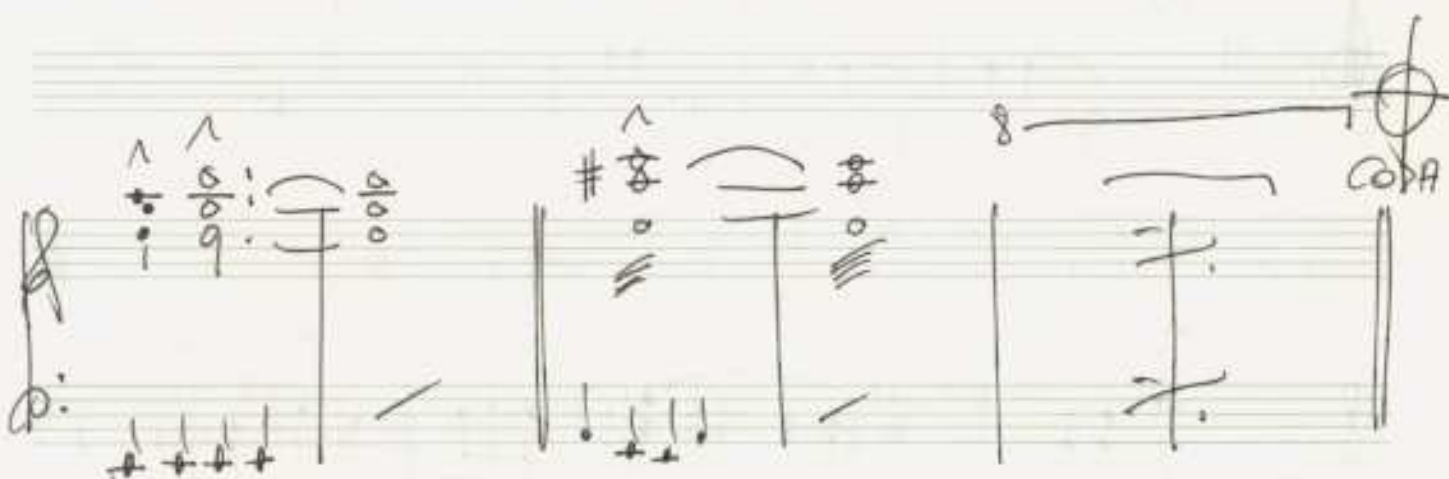
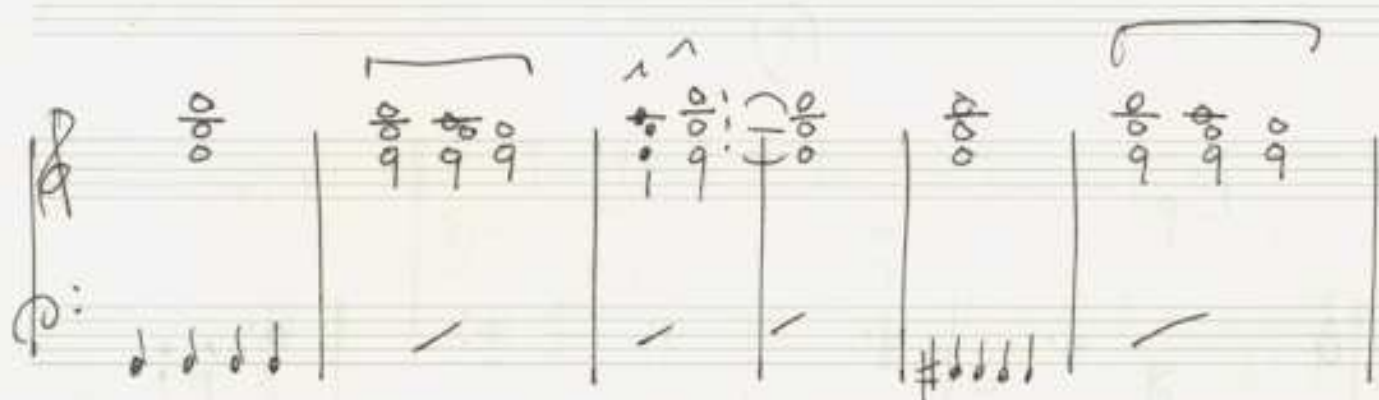


random



⑦

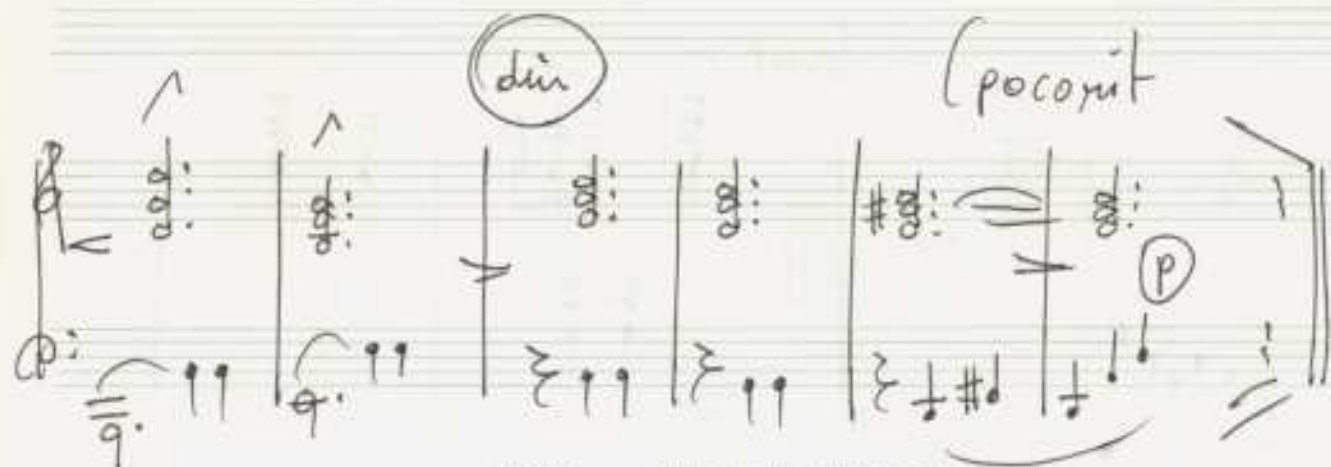
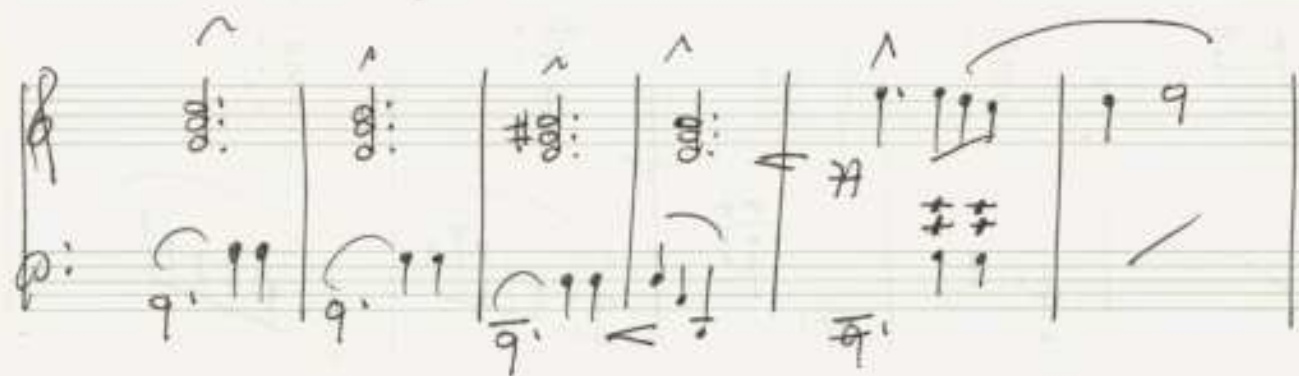
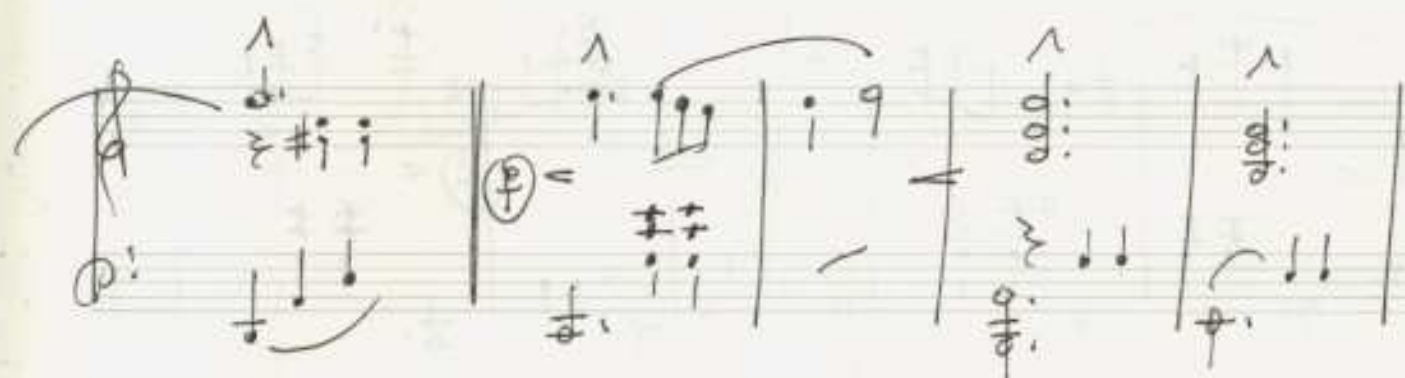
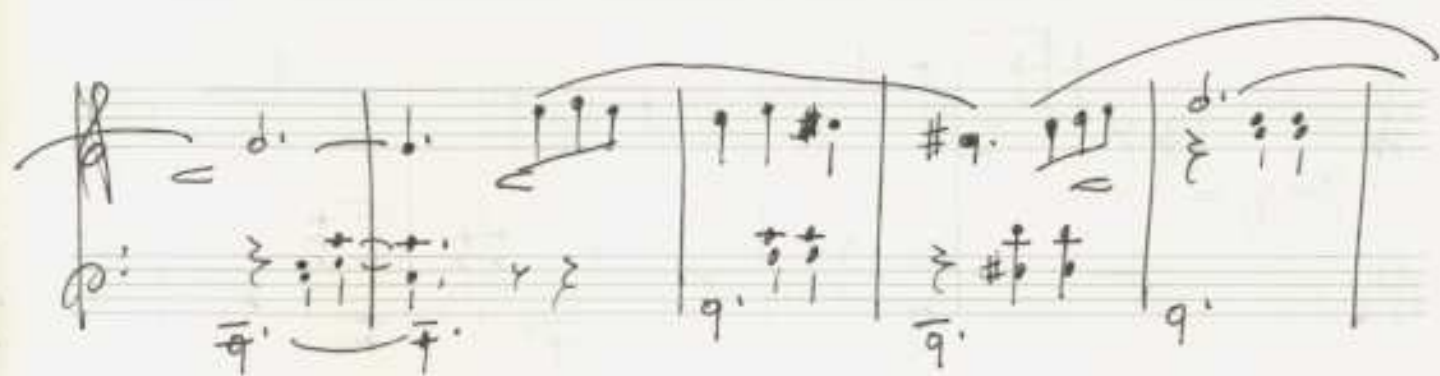
Adagio molto



Handwritten musical notation for a piece in D major, 3/4 time. The notation includes a treble clef, a key signature of one sharp (F#), and a common time signature (C). The music features a series of chords and melodic lines, with a final measure ending in a double bar line and a fermata. A circled number 8 is written below the staff.

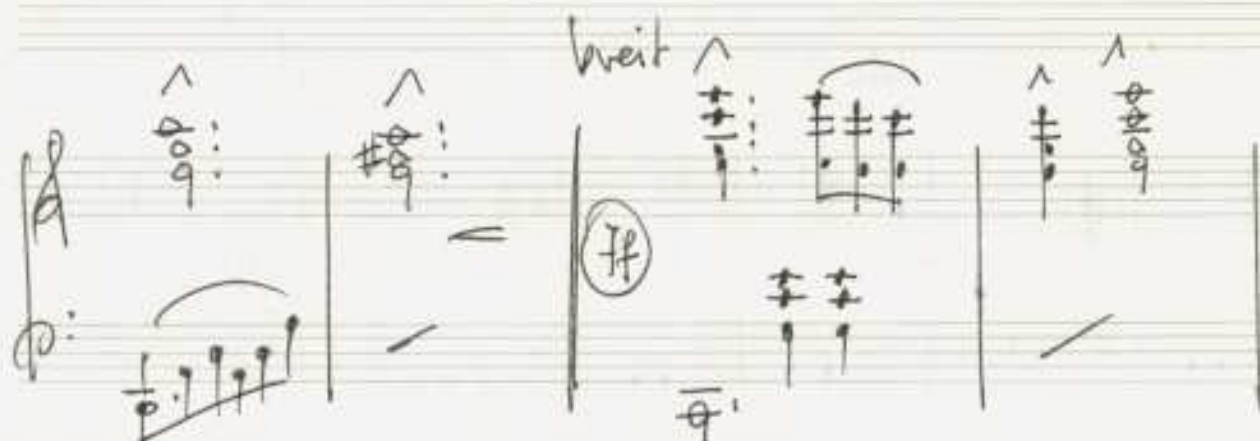
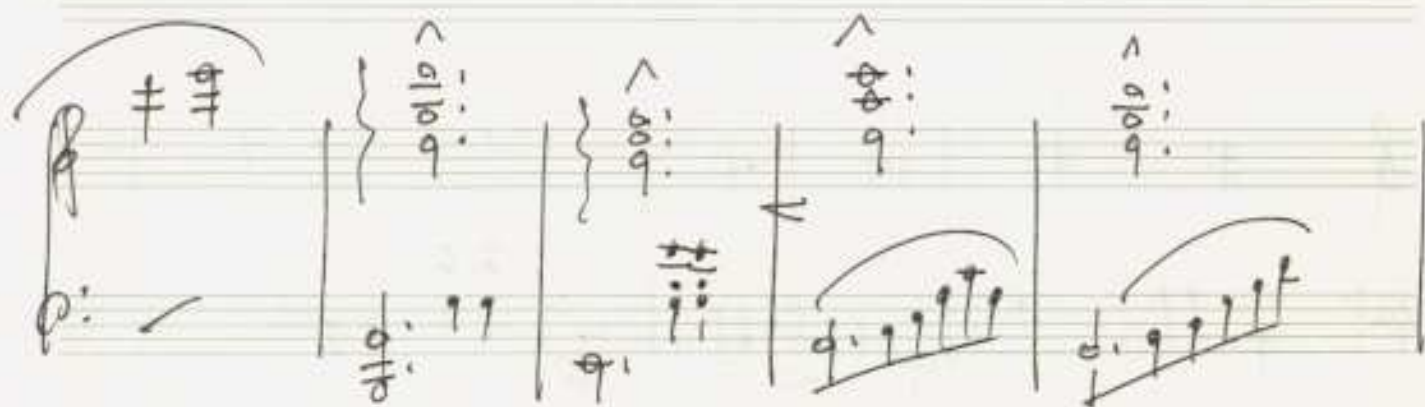
Handwritten musical notation for a piece in D major, 3/4 time. The notation includes a treble clef, a key signature of one sharp (F#), and a common time signature (C). The music features a series of chords and melodic lines, with a final measure ending in a double bar line and a fermata. A circled number 8 is written below the staff.

Handwritten musical notation for a piece in D major, 3/4 time. The notation includes a treble clef, a key signature of one sharp (F#), and a common time signature (C). The music features a series of chords and melodic lines, with a final measure ending in a double bar line and a fermata. A circled number 8 is written below the staff.



Zeit

Tempo / rubato



(reit + dän)

