

L.v. BEETHOVEN



W.A. MOZART



NOTENHEFT

F. SCHUBERT



J. HAYDN



J. STRAUSS



MADE IN AUSTRIA

1

Pedal

Pedal aus

Mod.

breit

Handwritten musical notation for the first system, consisting of two staves. The top staff is in treble clef and the bottom in bass clef. The music features quarter notes and eighth notes with various accidentals and phrasing slurs.

Handwritten musical notation for the second system, consisting of two staves. The notation includes quarter notes with accents and phrasing slurs.

(letztes mit + ^)

Handwritten musical notation for the third system, consisting of two staves. It concludes with a double bar line and the word "FINE" written in large letters.

passage

weiter werden

(poco rit)

ganzig (rit)

(rit + forte)

sehr
rasch

2

Handwritten musical notation for the first system, measures 1-3. The music is in treble and bass clefs. Measure 1 features a treble clef with a sharp sign and a bass clef with a half note. Measure 2 has a treble clef with a dotted quarter note and a bass clef with a quarter note. Measure 3 has a treble clef with a dotted quarter note and a bass clef with a quarter note. There are various accidentals and slurs throughout.

Handwritten musical notation for the second system, measures 4-6. Measure 4 has a treble clef with a dotted quarter note and a bass clef with a quarter note. Measure 5 has a treble clef with a dotted quarter note and a bass clef with a quarter note. Measure 6 has a treble clef with a dotted quarter note and a bass clef with a quarter note. There are various accidentals and slurs throughout.

Handwritten musical notation for the third system, measures 7-9. Measure 7 has a treble clef with a dotted quarter note and a bass clef with a quarter note. Measure 8 has a treble clef with a dotted quarter note and a bass clef with a quarter note. Measure 9 has a treble clef with a dotted quarter note and a bass clef with a quarter note. There are various accidentals and slurs throughout.

Handwritten musical notation for the fourth system, measures 10-12. Measure 10 has a treble clef with a dotted quarter note and a bass clef with a quarter note. Measure 11 has a treble clef with a dotted quarter note and a bass clef with a quarter note. Measure 12 has a treble clef with a dotted quarter note and a bass clef with a quarter note. There are various accidentals and slurs throughout.

Handwritten musical notation for the first system. It consists of a treble clef on the left and a grand staff (treble and bass clefs) on the right. The treble staff contains a series of notes with slurs and accents. The bass staff contains a few notes with accents.

Handwritten musical notation for the second system. It consists of a treble clef on the left and a grand staff. The treble staff has notes with slurs and accents. The bass staff has notes with slurs and accents.

Handwritten musical notation for the third system. It consists of a treble clef on the left and a grand staff. The treble staff has notes with slurs and accents. The bass staff has notes with slurs and accents.

Handwritten musical notation for the fourth system. It consists of a treble clef on the left and a grand staff. The treble staff has notes with slurs and accents. The bass staff has notes with slurs and accents.

Handwritten musical notation, first system. Treble clef (A), Bass clef (C). Measures 1-3. Measure 1: Treble has three chords with accents (^). Bass has a triplet of eighth notes. Measure 2: Treble has a block chord with a sharp sign (#) and four accents (^). Bass has a quarter note with a sharp sign (#) and an accent (^). Measure 3: Treble is empty. Bass has a quarter note with a sharp sign (#) and an accent (^), followed by a quarter rest.

Handwritten musical notation, second system. Treble clef (A), Bass clef (C). Measures 4-6. Measure 4: Treble has three chords with accents (^). Bass has a triplet of eighth notes. Measure 5: Treble has two chords with a sharp sign (#) and accents (^). Bass has two chords with a sharp sign (#) and accents (^). Measure 6: Treble is empty. Bass has a quarter note with a sharp sign (#) and an accent (^), followed by a quarter rest.

Handwritten musical notation, third system. Treble clef (A), Bass clef (C). Measures 7-9. Measure 7: Treble has three chords with accents (^). Bass has a triplet of eighth notes. Measure 8: Treble has a block chord with a sharp sign (#) and four accents (^). Bass has a quarter note with a sharp sign (#) and an accent (^), followed by a quarter rest. Measure 9: Treble is empty. Bass has a quarter note with a sharp sign (#) and an accent (^), followed by a quarter rest.

Handwritten musical notation, fourth system. Treble clef (A), Bass clef (C). Measures 10-12. Measure 10: Treble has three chords with accents (^). Bass has a triplet of eighth notes. Measure 11: Treble has a block chord with a sharp sign (#) and an accent (^). Bass has a triplet of eighth notes. Measure 12: Treble is empty. Bass has a quarter note with a sharp sign (#) and an accent (^), followed by a quarter rest. A circled cross symbol and the word "CODA" are written above the staff.

Сопра (дир.)

(метромалс видетелнас тис 187)

3

rutung (frei)

D.C.

Handwritten musical notation for the first system. It consists of two staves. The top staff is in treble clef with a key signature of one sharp (F#) and a common time signature (C). It features a melody line with a slur and a fermata. The bottom staff is in bass clef with a key signature of one sharp (F#) and a common time signature (C). It features a bass line with a slur and a fermata. A circled 'p' dynamic marking is present in the second measure of the top staff.

Sark

Handwritten musical notation for the second system. It consists of two staves. The top staff is in treble clef with a key signature of one sharp (F#) and a common time signature (C). It features a melody line with a slur and a fermata. The bottom staff is in bass clef with a key signature of one sharp (F#) and a common time signature (C). It features a bass line with a slur and a fermata.

brist

Handwritten musical notation for the third system. It consists of two staves. The top staff is in treble clef with a key signature of one sharp (F#) and a common time signature (C). It features a melody line with a slur and a fermata. The bottom staff is in bass clef with a key signature of one sharp (F#) and a common time signature (C). It features a bass line with a slur and a fermata. A circled 'ff' dynamic marking is present in the second measure of the top staff.

4

guitar

Handwritten musical notation on a grand staff. The upper staff contains a melodic line with a slur over the first two measures and a fermata over the third. The lower staff contains a bass line with a slur over the first two measures and a fermata over the third. The key signature has one sharp (F#).

Handwritten musical notation on a grand staff. The upper staff contains a melodic line with a slur over the first two measures and a fermata over the third. The lower staff contains a bass line with a slur over the first two measures and a fermata over the third. The key signature has one sharp (F#).

Handwritten musical notation on a grand staff. The upper staff contains a melodic line with a slur over the first two measures and a fermata over the third. The lower staff contains a bass line with a slur over the first two measures and a fermata over the third. The key signature has one sharp (F#). The text "gut - drei" is written above the staff, and "D.C." is circled in the right margin. The word "al" is written below the staff.

Handwritten musical notation on a grand staff. The upper staff contains a melodic line with a slur over the first two measures and a fermata over the third. The lower staff contains a bass line with a slur over the first two measures and a fermata over the third. The key signature has one sharp (F#). The word "Canto" is written above the staff, and "Canto Collo" is written below the staff.

5

quasi

Handwritten musical notation for the first system. It features a treble clef, a key signature of one flat (B-flat), and a common time signature. The notation includes a melodic line with a circled note and a bass line with chords. A large 'V' is written below the staff.

Handwritten musical notation for the second system. It shows a continuation of the piece with various musical notations and a large 'V' below the staff.

Handwritten musical notation for the third system. It continues the musical piece with complex notation and a large 'V' below the staff.

Handwritten musical notation for the fourth system. It concludes the piece with various musical notations and a large 'V' below the staff.

Handwritten musical notation for a system. It features a treble clef on the left with a key signature of one sharp (F#) and a common time signature (C). The notation includes a series of chords and melodic lines, with a large slur spanning across several measures. There are various annotations such as accents (^) and dynamic markings like 'f'.

Handwritten musical notation for a system. It features a treble clef on the left with a key signature of one sharp (F#) and a common time signature (C). The notation includes a series of chords and melodic lines, with a large slur spanning across several measures. There are various annotations such as accents (^) and dynamic markings like 'f'.

Handwritten musical notation for a system. It features a treble clef on the left with a key signature of one sharp (F#) and a common time signature (C). The notation includes a series of chords and melodic lines, with a large slur spanning across several measures. There are various annotations such as accents (^) and dynamic markings like 'f'.

Handwritten musical notation for a system. It features a treble clef on the left with a key signature of one sharp (F#) and a common time signature (C). The notation includes a series of chords and melodic lines, with a large slur spanning across several measures. There are various annotations such as accents (^) and dynamic markings like 'f'.

Handwritten musical notation for the first system. It features a treble clef and a 4/4 time signature. The first measure contains a circled sharp sign (#) above a vertical line. The second measure shows a treble staff with three chords, each marked with an accent (^) above it. The bass staff below has a sequence of notes. The third measure shows a treble staff with three chords, also marked with accents (^). The bass staff has a single note. The fourth measure shows a treble staff with three chords, marked with accents (^). The bass staff has a single note. The fifth measure shows a treble staff with three chords, marked with accents (^). The bass staff has a single note. The sixth measure shows a treble staff with three chords, marked with accents (^). The bass staff has a single note.

Handwritten musical notation for the second system. It features a treble clef and a 4/4 time signature. The first measure shows a treble staff with three chords, marked with accents (^). The bass staff has a sequence of notes. The second measure shows a treble staff with three chords, marked with accents (^). The bass staff has a single note. The third measure shows a treble staff with three chords, marked with accents (^). The bass staff has a single note. The fourth measure shows a treble staff with three chords, marked with accents (^). The bass staff has a single note. The fifth measure shows a treble staff with three chords, marked with accents (^). The bass staff has a single note. The sixth measure shows a treble staff with three chords, marked with accents (^). The bass staff has a single note.

Handwritten musical notation for the third system. It features a treble clef and a 4/4 time signature. The first measure shows a treble staff with three chords, marked with accents (^). The bass staff has a sequence of notes. The second measure shows a treble staff with three chords, marked with accents (^). The bass staff has a single note. The third measure shows a treble staff with three chords, marked with accents (^). The bass staff has a single note. The fourth measure shows a treble staff with three chords, marked with accents (^). The bass staff has a single note. The fifth measure shows a treble staff with three chords, marked with accents (^). The bass staff has a single note. The sixth measure shows a treble staff with three chords, marked with accents (^). The bass staff has a single note.

Handwritten musical notation for the fourth system. It features a treble clef and a 4/4 time signature. The first measure shows a treble staff with three chords, marked with accents (^). The bass staff has a sequence of notes. The second measure shows a treble staff with three chords, marked with accents (^). The bass staff has a single note. The third measure shows a treble staff with three chords, marked with accents (^). The bass staff has a single note. The fourth measure shows a treble staff with three chords, marked with accents (^). The bass staff has a single note. The fifth measure shows a treble staff with three chords, marked with accents (^). The bass staff has a single note. The sixth measure shows a treble staff with three chords, marked with accents (^). The bass staff has a single note.

Over.

melodisch wiederholen

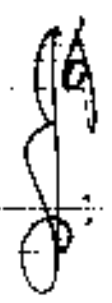
8 7

C

F#

C

F#



6

frei (ruhig) (frei gestalten)

Handwritten musical notation for the first system. It features a treble clef, a key signature of one flat (B-flat), and a 4/4 time signature. The melody consists of quarter notes and half notes, with a slur over the first two measures. The bass line includes chords and quarter notes.

Handwritten musical notation for the second system. It continues the piece with a treble clef, one flat key signature, and 4/4 time. The melody has a slur over the first two measures. The bass line features a series of eighth notes in the first measure and a half note in the second.

Handwritten musical notation for the third system. It shows a change in dynamics to 'p' (piano). The melody is mostly quarter notes. The bass line has a series of eighth notes in the first two measures.

Handwritten musical notation for the fourth system. It features a dynamic marking of 'f' (forte). The melody includes a series of eighth notes in the first two measures. The bass line has a series of eighth notes in the first two measures.



ritard

⑦

ohne pedale

Handwritten musical notation for the first system, featuring a treble clef, a key signature of one sharp (F#), and a common time signature. The notation includes various chords and melodic lines with slurs and accents.

Handwritten musical notation for the second system, continuing the piece with similar notation and a key signature of one sharp.

Handwritten musical notation for the third system, ending with a "CODA" marking and a double bar line.

Handwritten musical notation for the fourth system, including a circled "D.C." marking and a circled "P" dynamic marking.

Handwritten musical score for guitar. The score is written on a five-line staff with a treble clef. The key signature has one sharp (F#), and the time signature is 3/4. The first measure contains a circled 'H' and a chord. The second measure has a circled '8' below the staff. The score includes various musical notations such as chords, stems, and beams.

ending

Handwritten musical score for guitar, labeled "ending". The score is written on a five-line staff with a treble clef. The key signature has one sharp (F#), and the time signature is 3/4. The score includes a circled 'P' and various musical notations such as chords, stems, and beams.

Handwritten musical score for guitar. The score is written on a five-line staff with a treble clef. The key signature has one sharp (F#), and the time signature is 3/4. The score includes various musical notations such as chords, stems, and beams.

Handwritten musical notation for the first system, featuring a treble and bass clef with various notes and rests.

Handwritten musical notation for the second system, including a circled 'P' and a checkmark.

Handwritten musical notation for the third system, including a checkmark.

Handwritten musical notation for the fourth system, including circled words "din" and "poco rit" and a circled "P".

Zeit

Tempo/ritard

Handwritten musical notation for the first system. It consists of a treble staff and a bass staff. The treble staff contains several chords and melodic lines, with a circled 'p' (piano) dynamic marking. The bass staff has a few notes and rests. There are some handwritten annotations like 'Zeit' and 'Tempo/ritard' above the staff.

Handwritten musical notation for the second system. It features a treble staff with complex chordal structures and a bass staff with melodic fragments. There are various accidentals and dynamic markings throughout the system.

Handwritten musical notation for the third system. The treble staff shows chords and melodic lines, while the bass staff has a more active melodic line. There are some handwritten annotations above the staff.

Handwritten musical notation for the fourth system. It includes a treble staff with chords and a bass staff with a melodic line. A circled 'p' dynamic marking is present. There are also some handwritten annotations above the staff.

(reit + dän)

