

Notenheft

Einleitung (sehr langsam)

ORCH. *pp*

Sol. Viol. *pp*

pp *cresc. (accel.)*

accel.

Allegro

f

Allegro energico

Cello 1 (Soli)
Cello 2
1-2 Viol.
Br. + B.

1

2

Handwritten musical score for the first system. The top staff is in treble clef with a key signature of one sharp (F#) and a common time signature. It contains a melodic line with various accidentals and a fermata. The bottom staff is in bass clef and contains dense chordal textures with various accidentals and a fermata. The middle two staves are empty.

Handwritten musical score for the second system. The top staff continues the melodic line. The bottom staff features a prominent glissando line with a fermata. The middle two staves are empty.

Handwritten musical score for the third system. The top staff has a melodic line ending with a circled number '3'. The bottom staff has a wavy line labeled 'Gliss.' and a fermata. The middle two staves are empty.

Handwritten musical score for the first system. The top staff is for Violin (vi) and the bottom two staves are for Piano (p). The music is in G major and 4/4 time. The violin part begins with a melodic line, and the piano accompaniment provides harmonic support with chords and rhythmic patterns.

Handwritten musical score for the second system. The violin part continues with a melodic line, and the piano accompaniment provides harmonic support. A circled number '4' is written above the first measure of the violin staff.

Handwritten musical score for the third system. The violin part concludes with a final cadence, and the piano accompaniment provides harmonic support. A circled number '5' is written above the first measure of the violin staff, and a circled number '6' is written above the final measure of the violin staff.

Handwritten musical score for the first system, measures 1-4. The score is written on a grand staff with piano and violin parts. The piano part has a circled 'P' and dynamic markings like 'f' and 'p'. The violin part has a circled 'P' and dynamic markings like 'f' and 'p'. There are handwritten notes 'grit...' and 'wesentlich ruhiger'.

Handwritten musical score for the second system, measures 5-8. The score is written on a grand staff with piano and violin parts. The piano part has a circled 'P' and dynamic markings like 'f' and 'p'. The violin part has a circled 'P' and dynamic markings like 'f' and 'p'. There are handwritten notes 'wesentlich ruhiger' and 'grobes rit...'.

Handwritten musical score for the third system, measures 9-12. The score is written on a grand staff with piano and violin parts. The tempo is marked 'Lento'. The piano part has a circled 'P' and dynamic markings like 'pp' and 'f'. The violin part has a circled 'P' and dynamic markings like 'f' and 'p'. There are handwritten notes 'Lento', '(gr. rit...)', and '(alle)'.

Tempo 1

Handwritten musical score for the first system. It consists of three staves. The top staff is a piano part with notes G#4, A4, and B4, each with an accent (^) and a slur. The middle staff is a violin part with notes G#4, A4, and B4, also with accents and a slur. The bottom staff is a piano accompaniment with a circled 'pp' dynamic marking and a '4' time signature. The text 'alle viol.' is written above the violin staff. The bottom staff contains a bass line with notes G#3, A3, B3, C4, D4, E4, F4, G4, A4, B4, C5.

Handwritten musical score for the second system. It consists of three staves. The top staff is a piano part with notes G#4, A4, B4, C5, D5, E5, F5, G5, A5, B5, C6. The middle staff is a violin part with notes G#4, A4, B4, C5, D5, E5, F5, G5, A5, B5, C6. The bottom staff is a piano accompaniment with a 'cresc.' marking and a '4' time signature. The bottom staff contains a bass line with notes G#3, A3, B3, C4, D4, E4, F4, G4, A4, B4, C5.

Handwritten musical score for the third system. It consists of three staves. The top staff is a piano part with notes G#4, A4, B4, C5, D5, E5, F5, G5, A5, B5, C6. The middle staff is a violin part with notes G#4, A4, B4, C5, D5, E5, F5, G5, A5, B5, C6. The bottom staff is a piano accompaniment with 'ff' and 'f' dynamic markings and a '4' time signature. The bottom staff contains a bass line with notes G#3, A3, B3, C4, D4, E4, F4, G4, A4, B4, C5.

Handwritten musical score for the first system, measures 7-9. The system includes a piano accompaniment (treble and bass clefs) and a vocal line (middle staff). The piano part features complex chordal textures with numerous accidentals (sharps, flats, naturals) and some ledger lines. The vocal line consists of quarter notes with various accidentals. Measure 7 has a circled '7' in the bass clef. Measure 9 ends with a double bar line.

Handwritten musical score for the second system, measures 10-12. Similar to the first system, it features piano accompaniment and a vocal line. The piano part continues with complex chords and accidentals. The vocal line has more notes, including some with slurs. Measure 12 ends with a double bar line.

Handwritten musical score for the third system, measures 13-15. The piano accompaniment and vocal line continue. The piano part has a more active bass line with eighth notes. The vocal line has a melodic line with slurs. Measure 15 has a circled '10' in the top right corner.

Handwritten musical score for the first system. The piano part (left) consists of two staves with complex chords and melodic lines, including a dynamic marking of *ff*. The violin part (right) features a melodic line with various accidentals and a dynamic marking of *ff*. The system is divided into three measures.

Handwritten musical score for the second system. The piano part (left) consists of two staves with complex chords and melodic lines, including a dynamic marking of *ff*. The violin part (right) features a melodic line with various accidentals and a dynamic marking of *ff*. The system is divided into three measures.

Handwritten musical score for the third system. The piano part (left) consists of two staves with complex chords and melodic lines, including a dynamic marking of *ff*. The violin part (right) features a melodic line with various accidentals and a dynamic marking of *ff*. The system is divided into three measures.

Handwritten musical score for measures 11-12. The system contains four staves. The top two staves are vocal parts (Soprano and Alto), and the bottom two are piano accompaniment. The music is in a minor key with a key signature of one flat. Measure 11 shows a melodic phrase in the vocal parts with slurs and accents. The piano accompaniment features chords and a fermata over a measure. Measure 12 continues the melodic development.

breit-frei

du mit...

Handwritten musical score for measures 13-14. The system contains four staves. The top two staves are vocal parts, and the bottom two are piano accompaniment. The vocal line has lyrics "du mit..." and includes slurs and accents. The piano accompaniment has chords and a dynamic marking "ppp".

ppp

Handwritten musical score for measures 15-16. The system contains four staves. The top two staves are vocal parts, and the bottom two are piano accompaniment. The vocal line has a long note with a slur and a dynamic marking "ppp". The piano accompaniment has chords and a dynamic marking "ppp".

ppp

Scherz Kampfer

Handwritten musical score for the first system. The piano part (left) consists of two staves with notes and rests. The violin part (right) consists of two staves with notes and rests. The dynamics are marked *ppp* and *(CON SORD.)*. The key signature has one sharp (F#).

Handwritten musical score for the second system. The piano part (left) consists of two staves with notes and rests. The violin part (right) consists of two staves with notes and rests. The dynamics are marked *ppp*. The key signature has one sharp (F#).

13

Handwritten musical score for the third system. The piano part (left) consists of two staves with notes and rests. The violin part (right) consists of two staves with notes and rests. The key signature has one sharp (F#).

Handwritten musical score for the first system, consisting of three staves. The top two staves are empty. The bottom staff contains three horizontal lines representing rests, one in each measure.

Handwritten musical score for the second system, consisting of three staves. The top two staves contain melodic lines with notes and slurs. The bottom staff contains accompaniment with notes and slurs. The dynamic marking *ppp* is written on the left side of the bottom staff.

14

Handwritten musical score for the third system, consisting of three staves. The top two staves are empty. The bottom staff contains three horizontal lines representing rests, one in each measure. The word *arco* is written on the right side of the bottom staff, appearing twice.

Tempo 1.

Handwritten musical score for the first system, measures 1-2. The system consists of three staves: Violin I, Violin II, and Piano. The key signature is one sharp (F#) and the time signature is 3/4. The Violin I staff has a melodic line starting with a quarter note G4, followed by a half note A4. The Violin II staff is mostly silent. The Piano part has a complex texture with sixteenth and thirty-second notes. Dynamic markings include *pp* and *sempre cres.*

Handwritten musical score for the second system, measures 3-4. The system consists of three staves: Violin I, Violin II, and Piano. The Violin I staff has a melodic line with a half note G4 and a quarter note A4. The Violin II staff has a melodic line with a half note G4 and a quarter note A4. The Piano part continues with complex textures. Dynamic markings include *pp*.

Handwritten musical score for the third system, measures 5-6. The system consists of three staves: Violin I, Violin II, and Piano. The Violin I staff has a melodic line with a half note G4 and a quarter note A4. The Violin II staff has a melodic line with a half note G4 and a quarter note A4. The Piano part continues with complex textures. Dynamic markings include *f*. A circled measure number '15' is written in the right margin.

Handwritten musical score for the first system, measures 1-2. The system includes a violin part (top staff) with a circled '1' and a forte dynamic, a piano part (middle staff) with a forte dynamic, and a bass line (bottom staff) with eighth notes.

Handwritten musical score for the second system, measures 3-4. The system includes a violin part (top staff) with a forte dynamic and a triplet, a piano part (middle staff) with a fortissimo dynamic, and a bass line (bottom staff) with eighth notes.

Handwritten musical score for the third system, measures 5-6. The system includes a violin part (top staff) with a fortissimo dynamic and a circled '16', a piano part (middle staff) with a fortissimo dynamic, and a bass line (bottom staff) with eighth notes.

Handwritten musical score for the first system. It consists of three staves: Violin (top), Viola (middle), and Piano (bottom). The key signature is one sharp (F#). The system is divided into two measures. The first measure contains a violin entry with an accent (^) and a dynamic marking of *ff*. The piano part begins with a circled *pizz* marking. The second measure continues the melodic lines with various dynamics and articulations.

Handwritten musical score for the second system, continuing the three staves. The violin part features a long melodic line with an accent (^) and a dynamic marking of *ff*. The piano part includes an *arco* marking and a dynamic marking of *ff*. The system is divided into two measures, showing the development of the musical themes.

Handwritten musical score for the third system. The piano part is highly active with rapid sixteenth-note passages and complex chordal textures. The violin part continues with melodic fragments and rests. The system is divided into two measures, with the piano part becoming increasingly intricate.

Handwritten musical score for the first system, measures 1-3. The top two staves (treble and bass clef) contain complex melodic lines with various accidentals (sharps, flats, naturals) and slurs. The bottom two staves (grand staff) contain rests, indicating that the piano accompaniment is silent for these measures.

Handwritten musical score for the second system, measures 4-6. The top two staves continue the melodic lines with slurs and accents. The bottom two staves (grand staff) show chords and dynamics, including a forte (**f**) dynamic and various accidentals. There are also some handwritten annotations like arrows and slurs.

Handwritten musical score for the third system, measures 7-9. The top two staves continue the melodic lines. The bottom two staves (grand staff) show chords and dynamics, including a forte (**f**) dynamic and various accidentals. There are also some handwritten annotations like arrows and slurs.

Handwritten musical score for measures 11 and 12. The system consists of four staves. The top two staves are for the vocal line, with a treble clef on the first and a bass clef on the second. The bottom two staves are for the piano accompaniment, with a treble clef on the third and a bass clef on the fourth. The music includes various notes, rests, and dynamic markings such as *p* and *f*. There are also some handwritten annotations like $\#$ and \flat above notes.

Handwritten musical score for measures 13 and 14. The system consists of four staves. The top two staves are for the vocal line, and the bottom two are for the piano accompaniment. Measure 14 is circled in red. The music includes various notes, rests, and dynamic markings such as *f*. There are also some handwritten annotations like $\#$ and \flat above notes.

Handwritten musical score for measures 15 and 16, labeled "ORCH". The system consists of four staves. The top two staves are for the vocal line, and the bottom two are for the piano accompaniment. The music includes various notes, rests, and dynamic markings such as *f*. There are also some handwritten annotations like $\#$ and \flat above notes.

ORCH

20

(letzten 2 Takte nochmals)

21

gr. rit + dünn

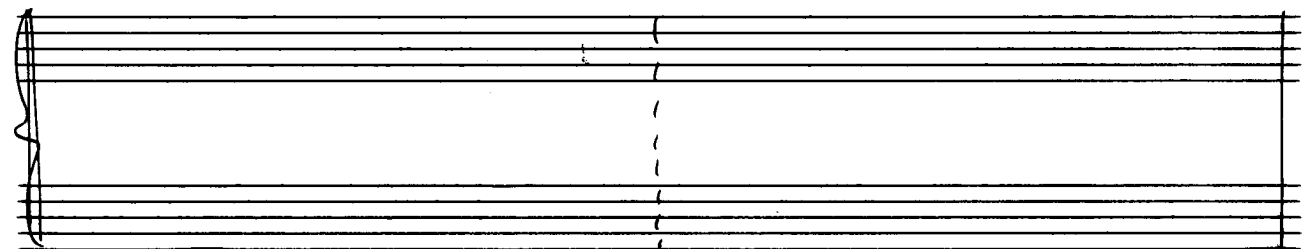
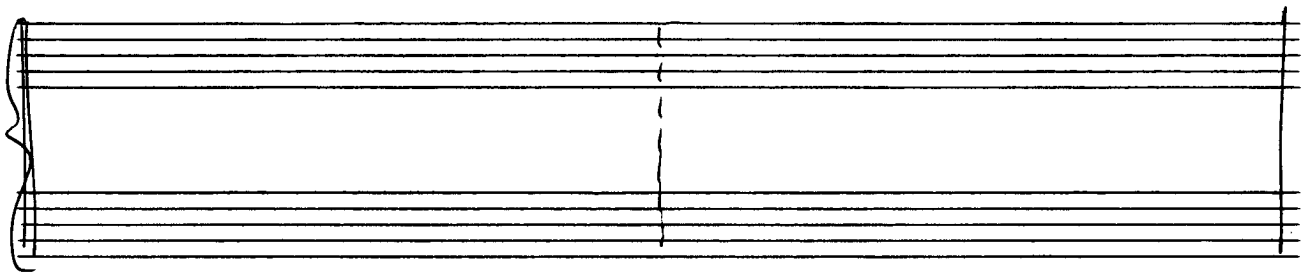
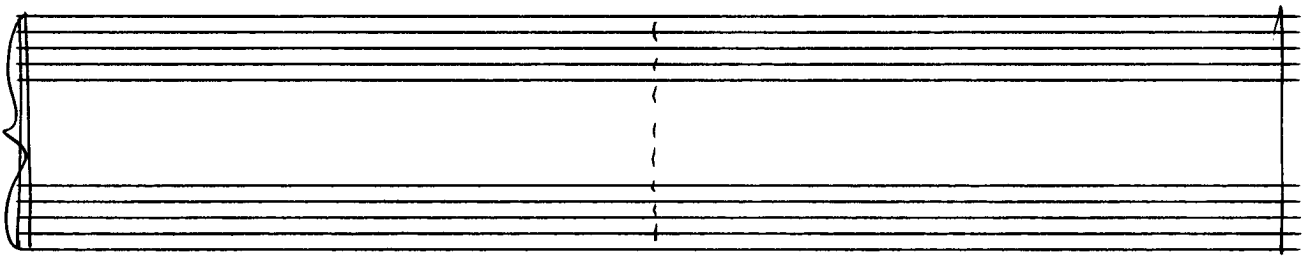
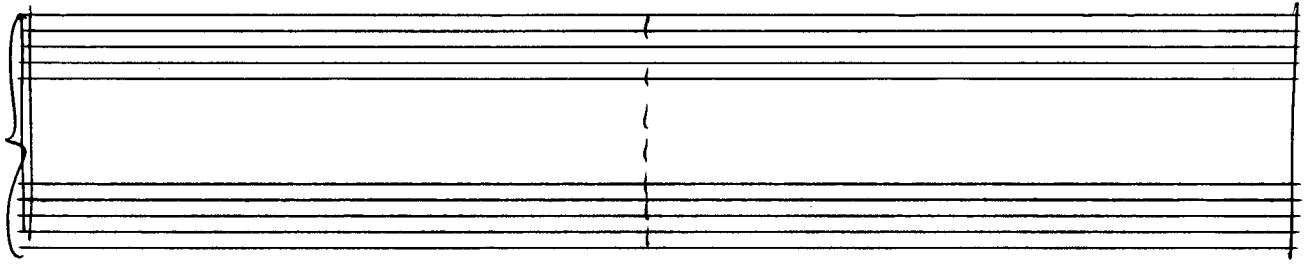
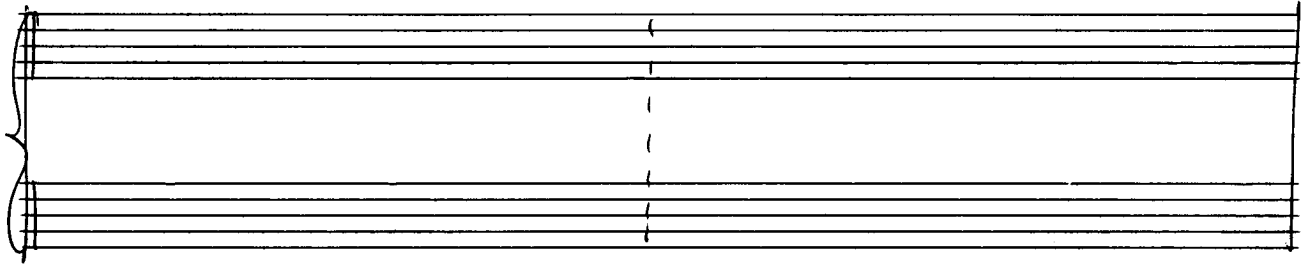
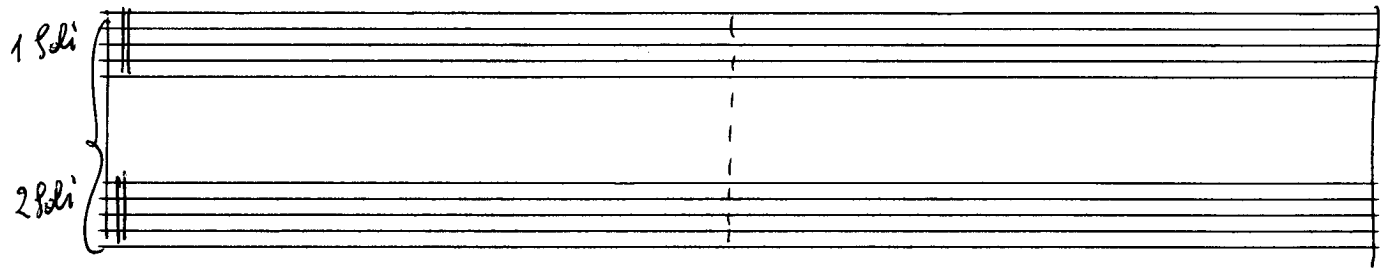
22

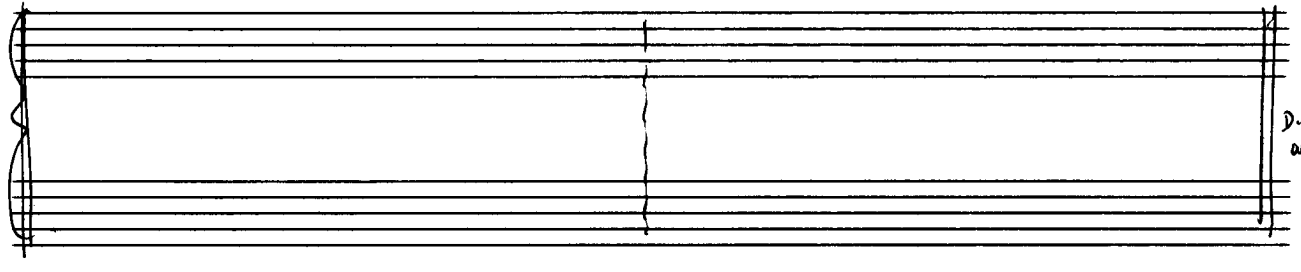
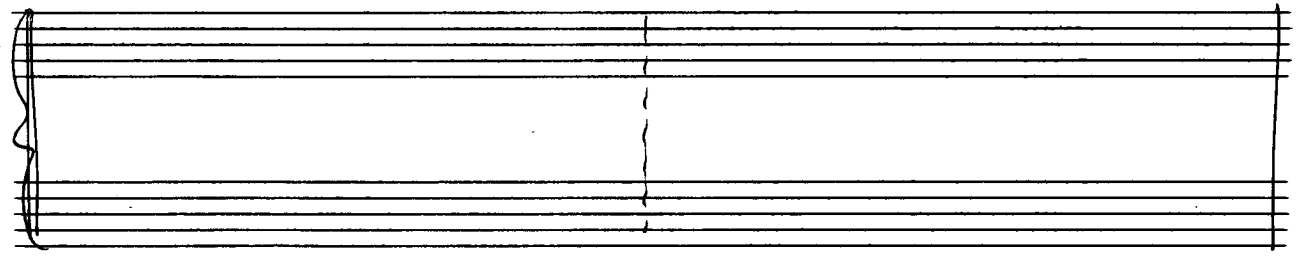
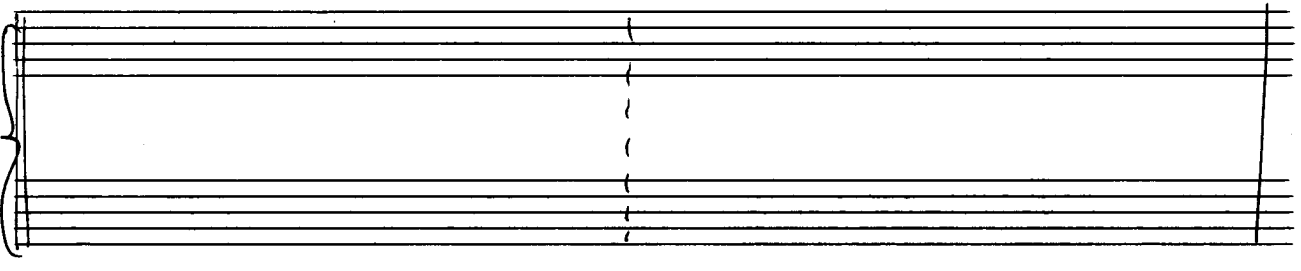
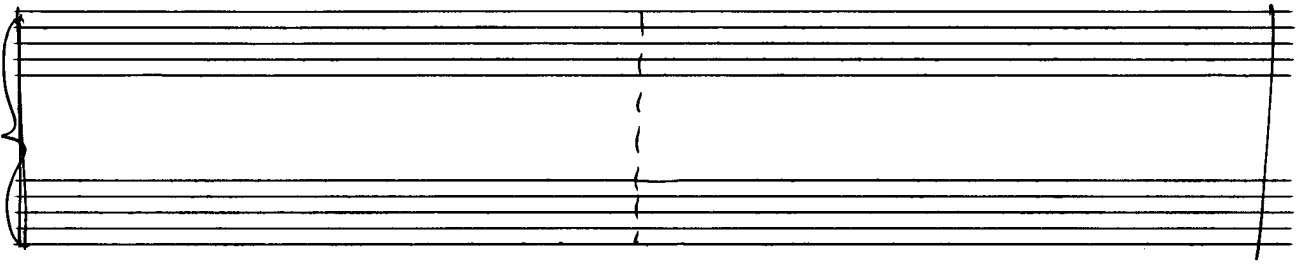
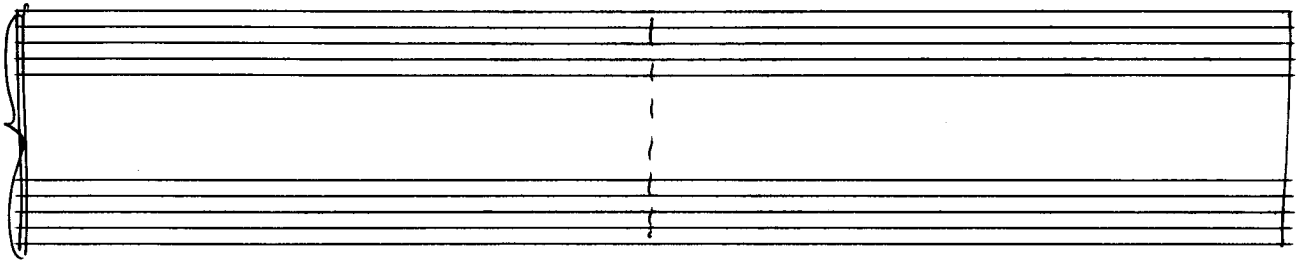
gröbes rit - dünn ..

23

1. Solo

2. Solo





ORCH

FIN

Lunga

G.P.

Lento (♩) sehr langsam)

(solo viol.)

pp (con sord.) 3

ORCH.

alle

Br.

(alle con sord.)

1

Handwritten musical score for the first system, measures 1-3. The score is written on a grand staff (treble and bass clefs). The first measure starts with a piano (*pp*) dynamic. The second measure has a circled *p* dynamic. The third measure has a *b* dynamic marking. The notation includes slurs, accents, and various rhythmic values.

Handwritten musical score for the second system, measures 4-6. The notation continues with dynamic markings such as *mf* and various slurs and accents. The grand staff notation is consistent with the previous system.

Handwritten musical score for the third system, measures 7-9. The notation includes dynamic markings such as *f* and various slurs and accents. The grand staff notation is consistent with the previous systems.

Handwritten musical score for the first system, measures 1-3. The notation includes a treble clef, a key signature of one sharp (F#), and a common time signature. The first staff contains a melodic line with dynamics markings 'ff', 'p', and 'pp'. A 'dim' marking is present above the second measure. The piano accompaniment is shown in the lower staves with dynamics 'ffp' and 'ppp'.

Handwritten musical score for the second system, measures 4-6. The notation continues with complex melodic and harmonic structures. Dynamics markings include 'pp' and 'pp(p33)'. The piano part remains mostly silent, indicated by horizontal lines.

Handwritten musical score for the third system, measures 7-10. The notation shows further development of the melodic and harmonic material. Dynamics markings include 'mf' and 'f'. The piano part is more active, with some notes and rests visible.

breit (appassionata)

Handwritten musical score for the first system, measures 1-2. The score is written for piano and includes a violin part. The piano part has a treble clef and a bass clef. The violin part has a treble clef. The key signature is one sharp (F#) and the time signature is 4/4. The first measure of the piano part has a dynamic marking of *mf* and a circled *P133*. The second measure has a dynamic marking of *mf* and a circled *P133*. The violin part has a dynamic marking of *mf* and a circled *P133*. The tempo marking is *breit (appassionata)*.


Handwritten musical score for the second system, measures 3-4. The score is written for piano and includes a violin part. The piano part has a treble clef and a bass clef. The violin part has a treble clef. The key signature is one sharp (F#) and the time signature is 4/4. The first measure of the piano part has a dynamic marking of *mf* and a circled *P133*. The second measure has a dynamic marking of *mf* and a circled *P133*. The violin part has a dynamic marking of *mf* and a circled *P133*. The tempo marking is *breit (appassionata)*. A circled number 4 is at the end of the system.

Handwritten musical score for the third system, measures 5-7. The score is written for piano and includes a violin part. The piano part has a treble clef and a bass clef. The violin part has a treble clef. The key signature is one sharp (F#) and the time signature is 4/4. The first measure of the piano part has a dynamic marking of *f*. The second measure has a dynamic marking of *f*. The third measure has a dynamic marking of *ppp*. The violin part has a dynamic marking of *f* and a circled *P133*. The tempo marking is *breit (appassionata)*. The text "größer mit... dünn..." is written above the piano part. The text "(frei)" is written above the violin part. A circled number 5 is at the end of the system.

Handwritten musical score for a string orchestra, consisting of three systems of staves.

System 1: Features a piano (pp) dynamic marking and the instruction "CON SORD." (con sordina). The notation includes various chordal textures and melodic lines across multiple staves.

System 2: Includes a circled measure number "6" at the end of the system. It contains complex chordal structures and melodic fragments, with dynamic markings such as ppp and fff.

System 3: Includes a circled measure number "7" at the end of the system. It features dynamic markings like ppp and fff, and includes the instruction "vorwärts" (forward) with an arrow pointing right. Below this, there is a note: "pppp (Bewegungen = ) mel." with an arrow pointing right.

accel.

8

(sehr breit) appassionato (frei)

9

breit - pr. rit + dim....

10

$\text{♩} = 1$

ORCHI.

ppp

16

(CONCORD)

11

ORCHI.

1 Solo

2 Solo

(frei - quasi Kadenz)

CONCORD. pppp

CON SOLO.

1 Solo

2 Solo

pppp

ff (energico)

ORCHI.

pppp

pppp

accel. →

accel.

accel.

12

PRESTO

Handwritten musical score for the first system. It consists of a grand staff with a 2/8 time signature. The upper staff is mostly empty. The lower staff contains a melodic line with various accidentals and a bass line with chords. The word "arco" is written above and below the lower staff. The system is divided into three measures.

Handwritten musical score for the second system. It includes the instruction "color breit (pesante)" above the staff. The system features a grand staff with a melodic line and a bass line. The word "arco" is written above the staff. The system is divided into three measures.

Handwritten musical score for the third system. It continues the melodic and bass lines from the previous systems. The system is divided into three measures.

Handwritten musical score for measures 12 and 13. Measure 12 features a melodic line in the right hand starting with a half note G4, followed by a quarter note Bb4, and a half note G4. The left hand has a half note D#4. Measure 13 is marked with a circled "13" and "(sol G)". The right hand has a triplet of eighth notes: G#4, A4, B4, followed by a quarter note G#4 and a half note G4. The left hand has a triplet of eighth notes: G4, A4, B4, followed by a quarter note G4 and a half note G4. A fermata is placed over the final G4 in both hands.

gr. dim + rit.....

Handwritten musical score for measures 14 and 15. Measure 14 has a melodic line in the right hand: Bb4, A4, Bb4, G4, F4, E4, D4. The left hand has a steady eighth-note accompaniment: G4, A4, B4, G4, A4, B4, G4, A4, B4, G4, A4, B4. Measure 15 continues the melodic line: D4, C4, B3, A3, G3. The left hand continues the eighth-note accompaniment. A fermata is placed over the final G3 in both hands.

Handwritten musical score for measures 14 and 15. Measure 14 is marked with a boxed "14". The right hand has a melodic line: G4, A4, B4, G4, F4, E4, D4. The left hand has a steady eighth-note accompaniment: G4, A4, B4, G4, A4, B4, G4, A4, B4, G4, A4, B4. Measure 15 is marked with a boxed "15". The right hand has a melodic line: D4, C4, B3, A3, G3. The left hand continues the eighth-note accompaniment. A fermata is placed over the final G3 in both hands. Dynamic markings include *p*, *pp*, and *pp*. The piece ends with "D.C. al fine".

#

Handwritten musical score for piano and violin. The piano part is in the upper system, and the violin part is in the lower system. The piano part features a series of chords in the right hand and single notes in the left hand, with a dynamic marking of *ppp* and the instruction *(CON SORD.)*. The violin part has a single note with a dynamic marking of *ppp* and the instruction *Lunga*. A box labeled *FIN* is located at the end of the violin staff.

ppp (CON SORD.)

Lunga

ppp

FIN

Four sets of empty musical staves, each consisting of five lines, arranged vertically.

3

Andagio

Handwritten musical score for the first system. It consists of two staves. The upper staff is for a horn, with a treble clef and a key signature of one sharp (F#). The lower staff is for piano accompaniment, with a bass clef and a key signature of one sharp (F#). The tempo is marked "Andagio". The music begins with a 4/4 time signature. The piano part starts with a series of quarter notes: F#4, G4, A4, B4, C5, D5, E5, F#5. The horn part has a long note, possibly a whole note, in the first measure.

Handwritten musical score for the second system. It consists of two staves. The upper staff is for a horn, with a treble clef and a key signature of one sharp (F#). The lower staff is for piano accompaniment, with a bass clef and a key signature of one sharp (F#). The tempo is marked "Andagio". The music begins with a 4/4 time signature. The piano part starts with a series of quarter notes: F#4, G4, A4, B4, C5, D5, E5, F#5. The horn part has a long note, possibly a whole note, in the first measure. The system concludes with an "accel." marking and a double bar line. There are handwritten annotations in boxes: a box with "1" above the first measure and a box with "2" above the final measure. The piano part includes various articulations like accents and slurs.

Allegro vivace

Handwritten musical score for the first system, measures 1-3. The system consists of two grand staves. The top staff is in treble clef with a 2/2 time signature. It contains a melodic line with notes: G#4, A4, Bb4, C5, D5, E5, F#5, G#5, A5, Bb5, C6, D6, E6, F#6, G#6, A6, Bb6, C7. There are slurs over the first two measures and the last two measures. A circled number '3' is at the end. The bottom staff is in bass clef with a 2/2 time signature. It contains a bass line with notes: G#2, A2, Bb2, C3, D3, E3, F#3, G#3, A3, Bb3, C4, D4, E4, F#4, G#4, A4, Bb4, C5. There is a circled 'f' and '(p133)' at the beginning.

Handwritten musical score for the second system, measures 4-6. The system consists of two grand staves. The top staff is in treble clef with a 2/2 time signature. It contains a melodic line with notes: G#4, A4, Bb4, C5, D5, E5, F#5, G#5, A5, Bb5, C6, D6, E6, F#6, G#6, A6, Bb6, C7. There are slurs over the first two measures and the last two measures. A circled number '4' is at the end. The bottom staff is in bass clef with a 2/2 time signature. It contains a bass line with notes: G#2, A2, Bb2, C3, D3, E3, F#3, G#3, A3, Bb3, C4, D4, E4, F#4, G#4, A4, Bb4, C5. There is a circled 'f' and '(p133)' at the beginning. The word 'arco' is written in a circle on the right side of the system.

Handwritten musical score for the third system, measures 7-9. The system consists of two grand staves. The top staff is in treble clef with a 2/2 time signature. It contains a melodic line with notes: G#4, A4, Bb4, C5, D5, E5, F#5, G#5, A5, Bb5, C6, D6, E6, F#6, G#6, A6, Bb6, C7. There are slurs over the first two measures and the last two measures. The bottom staff is in bass clef with a 2/2 time signature. It contains a bass line with notes: G#2, A2, Bb2, C3, D3, E3, F#3, G#3, A3, Bb3, C4, D4, E4, F#4, G#4, A4, Bb4, C5. There is a circled 'f' at the beginning. The system is crossed out with a large diagonal line.

5

Handwritten musical score for system 5, measures 1-3. The right hand contains melodic lines with various accidentals and slurs. The left hand features sustained notes with dynamic markings such as *p* and *pp*.

Handwritten musical score for system 6, measures 4-6. The right hand continues with melodic lines. The left hand features a *ppp* cluster (cresc.) with an arrow pointing to a horizontal line, indicating a crescendo.

6

Handwritten musical score for system 7, measures 7-9. The right hand contains melodic lines. The left hand features a horizontal line with dynamic markings *ff* and *f* at the end.

Handwritten musical score for the first system. The top staff is in treble clef with a melodic line. The bottom two staves are a grand staff for piano accompaniment. The key signature has one flat (B-flat). The piano part includes chords with a circled '5' and various fingering brackets.

Handwritten musical score for the second system. The top staff continues the melodic line. The piano accompaniment features more complex chordal textures and fingering.

Handwritten musical score for the third system. The top staff concludes the melodic line. The piano accompaniment includes a circled '5' and various chordal textures.

7

Handwritten musical score for system 7, measures 1-4. The system includes a treble clef staff with a melodic line and a grand staff with piano accompaniment. The first measure has a 'Gliss.' marking. The second measure has a 'ff' dynamic marking. The third and fourth measures have 'f' dynamics and accents.

Handwritten musical score for system 8, measures 1-4. The system includes a treble clef staff with a melodic line and a grand staff with piano accompaniment. The first measure has a 'ff' dynamic marking. The second measure has a 'f' dynamic marking. The third and fourth measures have 'f' dynamics and accents.

8

Handwritten musical score for system 9, measures 1-4. The system includes a treble clef staff with a melodic line and a grand staff with piano accompaniment. The first measure has a 'ff' dynamic marking. The second measure has a 'f' dynamic marking. The third and fourth measures have 'f' dynamics and accents.

Handwritten musical score for the first system, measures 7-9. The top staff features a wavy line with four groups of four notes each, marked with the number '4'. The bottom two staves show chords in measures 7 and 9, with some notes marked with a sharp sign (#).

Handwritten musical score for the second system, measures 10-12. The top staff features a wavy line with four groups of four notes each, marked with the number '4'. The bottom two staves show chords in measures 10 and 12, with a circled '10' above the first measure.

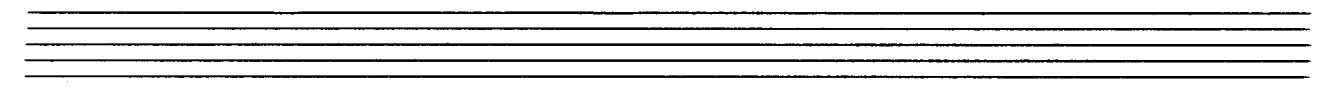
Handwritten musical score for the third system, measures 13-15. The top two staves are mostly empty with some markings. The bottom two staves show chords in measures 13 and 15, with dynamic markings 'p' and 'ppp'.

(sempre crescendo)

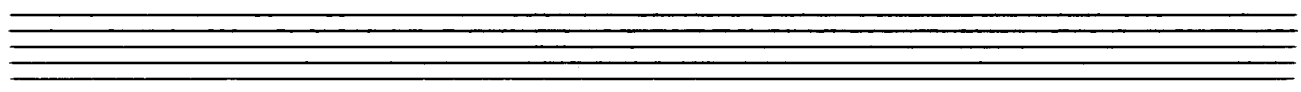
Handwritten musical score for the first system. It consists of two staves for piano and two staves for strings. The piano part is in treble clef, and the strings are in bass clef. The key signature has one flat (B-flat). The piano part starts with a *pp* dynamic and features a melodic line with eighth notes. The strings play a sustained chord with a *ppp* dynamic. The system concludes with a fermata over the final notes.

cresc. →

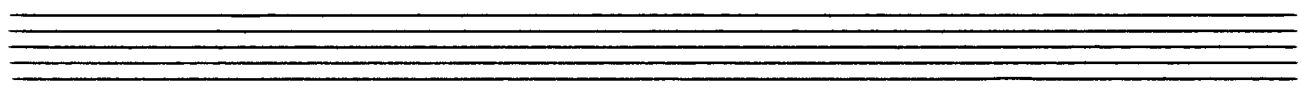
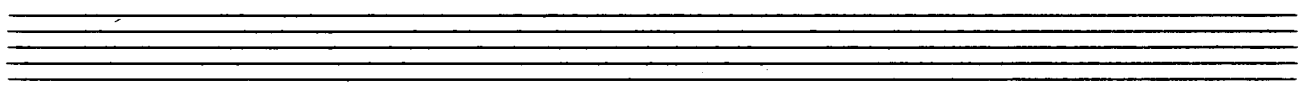
Handwritten musical score for the second system, marked with a circled '11' in the top right corner. It features woodwind and string parts. The woodwinds are in treble clef, and the strings are in bass clef. The key signature has one flat. The woodwinds play a melodic line with a *f* dynamic. The strings play a sustained chord with a *mf* dynamic. The system concludes with a fermata over the final notes.

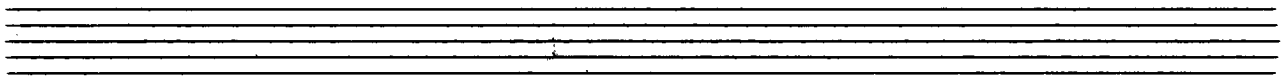
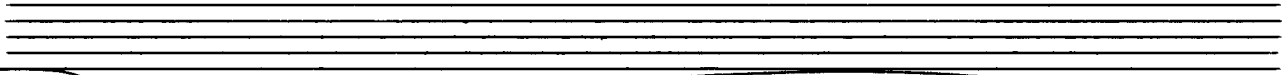
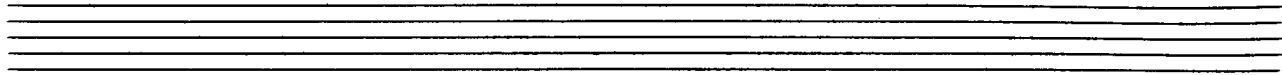


Handwritten musical score for the first system. It consists of two systems of staves. The first system has two staves with notes and rests, including a fermata. The second system has two staves with notes and rests. The music is in a minor key with a key signature of one flat.



Handwritten musical score for the second system. It consists of two systems of staves. The first system has two staves with notes and rests, including a fermata. The second system has two staves with notes and rests. The music is in a minor key with a key signature of one flat.





Handwritten musical score for the first system. It consists of a grand staff with piano (p) and violin (v) parts. The piano part is written in treble and bass clefs, while the violin part is in treble clef. The score is divided into two measures. In the first measure, the piano part has a treble clef with a sharp sign (##) and a bass clef with a sharp sign (#). The violin part has a treble clef with a sharp sign (#). In the second measure, the piano part has a treble clef with a sharp sign (#) and a bass clef with a sharp sign (#). The violin part has a treble clef with a sharp sign (#). There are two horizontal lines above the grand staff, likely for other instruments.

Handwritten musical score for the second system. It consists of a grand staff with piano (p) and violin (v) parts. The piano part is written in treble and bass clefs, while the violin part is in treble clef. The score is divided into two measures. In the first measure, the piano part has a treble clef with a sharp sign (#) and a bass clef with a sharp sign (#). The violin part has a treble clef with a sharp sign (#). In the second measure, the piano part has a treble clef with a sharp sign (#) and a bass clef with a sharp sign (#). The violin part has a treble clef with a sharp sign (#). There are two horizontal lines above the grand staff. The system ends with a circled number 13 in the top right corner.

(frei)

Handwritten musical notation for the first system. It consists of a grand staff with two treble clefs and two bass clefs. The notation includes several notes with dynamic markings: pp (pianissimo) and pp (pianissimo). There are also slurs and a fermata-like line over the notes. The notation is written in black ink on a white background.

14

Handwritten musical notation for the second system. It consists of a grand staff with two treble clefs and two bass clefs. The notation includes several notes with dynamic markings: pp (pianissimo) and pp (pianissimo). There are also slurs and a fermata-like line over the notes. The notation is written in black ink on a white background.

Tempo 1. (sempre cresc.....) →

ORCH

17

18

Handwritten musical score for a string orchestra, consisting of three systems of staves. Each system includes a treble clef staff with melodic lines, a grand staff (treble and bass clefs) with harmonic accompaniment, and a bass clef staff with a bass line. The notation includes various notes, rests, slurs, and dynamic markings such as 'f' and 'p'. A circled number '19' is visible at the end of the third system.

Handwritten musical score for the first system. It consists of three staves. The top staff is in treble clef and contains a melodic line with various accidentals and a circled number '20' above it. The middle staff is in alto clef and contains a melodic line with many accidentals. The bottom staff is in bass clef and contains a bass line with a few notes and rests.

Handwritten musical score for the second system. It consists of three staves. The top staff is in treble clef and contains a melodic line with many accidentals and a circled number '20' above it. The middle staff is in alto clef and contains a melodic line with many accidentals. The bottom staff is in bass clef and contains a bass line with a few notes and rests.

Handwritten musical score for the third system. It consists of three staves. The top staff is in treble clef and contains a melodic line with many accidentals and a circled number '20' above it. The middle staff is in alto clef and contains a melodic line with many accidentals. The bottom staff is in bass clef and contains a bass line with a few notes and rests.

Handwritten musical score for the first system, measures 1-3. The system includes three staves: Violin (top), Viola (middle), and Cello/Bass (bottom). The Violin part has a long slur over measures 1 and 2, with a sharp sign and a quarter note in measure 1, and a sharp sign and a quarter note in measure 2. The Viola part has a slur over measures 1 and 2, with a sharp sign and a quarter note in measure 1, and a sharp sign and a quarter note in measure 2. The Cello/Bass part has a complex rhythmic pattern with a sharp sign and a quarter note in measure 1, and a sharp sign and a quarter note in measure 2. Dynamics include *p133* and *arco*.

Handwritten musical score for the second system, measures 4-5. The system includes three staves: Violin (top), Viola (middle), and Cello/Bass (bottom). The Violin part has a slur over measures 4 and 5, with a sharp sign and a quarter note in measure 4, and a sharp sign and a quarter note in measure 5. The Viola part has a slur over measures 4 and 5, with a sharp sign and a quarter note in measure 4, and a sharp sign and a quarter note in measure 5. The Cello/Bass part has a complex rhythmic pattern with a sharp sign and a quarter note in measure 4, and a sharp sign and a quarter note in measure 5. Dynamics include *pp* and *cresc.*

Handwritten musical score for the third system, measures 6-7. The system includes three staves: Violin (top), Viola (middle), and Cello/Bass (bottom). The Violin part has a slur over measures 6 and 7, with a sharp sign and a quarter note in measure 6, and a sharp sign and a quarter note in measure 7. The Viola part has a slur over measures 6 and 7, with a sharp sign and a quarter note in measure 6, and a sharp sign and a quarter note in measure 7. The Cello/Bass part has a complex rhythmic pattern with a sharp sign and a quarter note in measure 6, and a sharp sign and a quarter note in measure 7. Dynamics include *pp*.

Handwritten musical score for the first system. It consists of three staves: Violin (top), Viola (middle), and Piano (bottom). The Violin staff has a treble clef and contains several measures with notes and accidentals, including a triplet of eighth notes. The Viola staff has a bass clef and contains notes with a $b\hat{9}$ marking. The Piano part is in G major, with the right hand in treble clef and the left hand in bass clef. Dynamics include mf and f . There are various phrasing slurs and accents throughout the system.

Handwritten musical score for the second system. It consists of three staves: Violin (top), Viola (middle), and Piano (bottom). The Violin staff has a treble clef and contains notes with a circled plus sign (\oplus) and a $b\hat{9}$ marking. The Viola staff has a bass clef and contains notes with a f dynamic. The Piano part is in G major, with the right hand in treble clef and the left hand in bass clef. Dynamics include f . There are various phrasing slurs and accents throughout the system.

Handwritten musical score for the third system. It consists of three staves: Violin (top), Viola (middle), and Piano (bottom). The Violin staff has a treble clef and contains notes with a $b\hat{9}$ marking. The Viola staff has a bass clef and contains notes with a f dynamic. The Piano part is in G major, with the right hand in treble clef and the left hand in bass clef. Dynamics include f . There are various phrasing slurs and accents throughout the system.

accel

23

Handwritten musical score for measures 23-24. It consists of four staves: two for strings (violin and viola) and two for piano (right and left hand). The music is in 2/2 time. Measure 23 shows a complex rhythmic pattern with many sixteenth notes. Measure 24 continues with similar patterns. There are various accidentals (flats, sharps, naturals) and dynamic markings like 'ff' and 'f'. The word 'accel.' is written at the bottom of the piano part.

(so rasch als möglich)

24

Handwritten musical score for measures 25-26. It consists of four staves: two for strings (violin and viola) and two for piano (right and left hand). The music is in 2/2 time. Measure 25 shows a complex rhythmic pattern with many sixteenth notes. Measure 26 continues with similar patterns. There are various accidentals (flats, sharps, naturals) and dynamic markings like 'ff' and 'f'. The word 'accel.' is written at the bottom of the piano part.

25

ORCH

letzten 4 Takte nochmals

accel.)

4 Takte

Block

f ORCHESTER

pp (sempre crescendo)

26

1 Solo

2 Solo

Orch.

pp

pp

ppp

cresc...

Block [A]

27

Block [A]

28

f

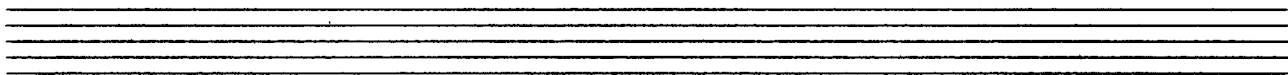
f

f

f

Block [A]

Handwritten musical score for the first system, featuring a grand staff with piano and violin parts. The piano part includes chords and melodic lines, while the violin part has a long, sweeping line with an accent mark.



Handwritten musical score for the second system, including piano and violin parts. The piano part has "GLISS" markings and a "291" box. The violin part has a long line with a "4" marking and a "3" marking.



Handwritten musical score for the third system, labeled "ORCH" on the left. It includes piano and violin parts. The piano part has "Longo" and "Fine" markings. The violin part has a long line with a "3" marking. The name "Adolf Scherbaum" is written in cursive.