



Einleitung (sehr langsam)

ORCH. *pp*

Solo Viol. *pp*

pp *cresc. (accel.)*

accel.

Allegro

f

Allegro energico

Cello 1 (Soli)
Cello 2
1-2 Viol.
Br. + B.

1

2

Handwritten musical score for the first system. The top staff (treble clef) contains a melodic line with notes and accidentals (sharps and naturals). The bottom staff (bass clef) contains chords and a line with a wavy, glissando-like appearance. The system is divided into three measures by vertical bar lines.

Handwritten musical score for the second system. The top staff continues the melodic line. The bottom staff features chords and a line with a wavy, glissando-like appearance. The system is divided into three measures by vertical bar lines.

Handwritten musical score for the third system. The top staff contains a melodic line ending with a circled number '3'. The bottom staff features a wavy line labeled 'Gliss.' and the word 'arco' written above it. The system is divided into three measures by vertical bar lines.

Handwritten musical score for the first system, consisting of three staves. The top staff is a single melodic line with various notes and rests. The middle staff is a single melodic line, mostly containing rests. The bottom staff is a piano accompaniment with chords and rhythmic markings. The system is divided into three measures.

Handwritten musical score for the second system, consisting of three staves. The top staff has a circled number '4' above the first measure. The middle staff has a circled number '4' above the first measure. The bottom staff is a piano accompaniment. The system is divided into three measures.

Handwritten musical score for the third system, consisting of three staves. The top staff has a circled number '5' above the first measure. The middle staff has a circled number '5' above the first measure. The bottom staff is a piano accompaniment. The system is divided into three measures, with a circled number '6' at the end of the third measure.

Handwritten musical score for measures 7-9, system 1. The notation includes a grand staff with treble and bass clefs. The music features various notes, rests, and dynamic markings such as #p, f, and p. There are also handwritten annotations like "grit" and "grit mit...".

Handwritten musical score for measures 7-9, system 2. The notation includes a grand staff with treble and bass clefs. The music features various notes, rests, and dynamic markings such as p and pp. There are also handwritten annotations like "wesentlich ruhiger" and "grobes rit...".

Handwritten musical score for measures 7-9, system 3. The notation includes a grand staff with treble and bass clefs. The music features various notes, rests, and dynamic markings such as pp and p. There are also handwritten annotations like "Lento", "(grit mit...)", and "(alle)".

Tempo 1

Handwritten musical score for the first system, measures 1-3. The system consists of three staves: Violin I, Violin II, and Cello/Double Bass. The Violin I staff has notes G#4, A#4, and Bb4 with accents (^) and a slur. The Violin II staff has notes G#4, A#4, and Bb4 with accents (^) and a slur. The Cello/Double Bass staff has a whole note G#2, a whole note A#2, and a whole note Bb2, with a circled *pp* dynamic marking. The bottom staff shows a bass line with notes G#2, A#2, Bb2, and G#2.

Handwritten musical score for the second system, measures 4-6. The system consists of three staves: Violin I, Violin II, and Cello/Double Bass. The Violin I staff has notes G4, Ab4, and A4 with a slur. The Violin II staff has notes G4, Ab4, and A4 with a slur. The Cello/Double Bass staff has a whole note G#2, a whole note A#2, and a whole note Bb2, with a circled *pp* dynamic marking and the instruction *cresc.* below. The bottom staff shows a bass line with notes G#2, A#2, Bb2, and G#2.

Handwritten musical score for the third system, measures 7-9. The system consists of three staves: Violin I, Violin II, and Cello/Double Bass. The Violin I staff has notes G4, Ab4, and A4 with a slur. The Violin II staff has notes G4, Ab4, and A4 with a slur. The Cello/Double Bass staff has a whole note G#2, a whole note A#2, and a whole note Bb2, with a circled *pp* dynamic marking and the instruction *f* below. The bottom staff shows a bass line with notes G#2, A#2, Bb2, and G#2. A circled number 9 is at the end of the system.

Handwritten musical score for the first system, measures 7-9. The piano part (top two staves) features complex chords with accidentals (sharps and flats) and a fermata over the final measure. The string part (bottom two staves) consists of sustained notes with a circled measure number '7' in the first measure.

Handwritten musical score for the second system, measures 10-12. The piano part continues with complex chords and a fermata. The string part maintains sustained notes. A circled measure number '10' is present in the first measure of the piano part.

Handwritten musical score for the third system, measures 13-15. The piano part concludes with a melodic line and a fermata. The string part concludes with sustained notes. A circled measure number '10' is present in the first measure of the piano part.

Handwritten musical score for the first system. The piano part (top two staves) features a melody in the right hand with various accidentals (sharps, flats, naturals) and a bass line in the left hand with a triplet of eighth notes. The string part (bottom two staves) consists of sustained chords in the upper and lower registers, with some dynamics like *ff* and *f*.

Handwritten musical score for the second system. The piano part continues with a melodic line in the right hand and a bass line in the left hand. The string part features sustained chords with some dynamics like *f* and *ff*.

Handwritten musical score for the third system. The piano part continues with a melodic line in the right hand and a bass line in the left hand. The string part features sustained chords with some dynamics like *f* and *ff*.

Handwritten musical score for measures 11-12, systems 1-4. System 1: Violin I and II with slurs and accents. System 2: Viola and Violoncello with slurs and accents. System 3: Flute with notes and slurs. System 4: Bassoon with notes and slurs.

breit-frei

Handwritten musical score for measures 11-12, systems 5-7. System 5: Violin I with notes and slurs. System 6: Viola and Violoncello with notes and slurs. System 7: Flute and Bassoon with notes and slurs.

dim rit...

Handwritten musical score for measures 11-12, systems 8-10. System 8: Violin I with notes and slurs. System 9: Viola and Violoncello with notes and slurs. System 10: Flute and Bassoon with notes and slurs.

ppp

Scherz Langsam

ppp
(CON SORD.)

ppp

Handwritten musical score for the first system, consisting of four staves. The notation includes various notes, rests, and dynamic markings across the system.

Handwritten musical score for the second system, featuring a complex melodic line with accidentals and a *ppp* dynamic marking. The notation includes various notes, rests, and dynamic markings across the system.

Handwritten musical score for the third system, showing four staves with rests and *arco* markings. The notation includes various notes, rests, and dynamic markings across the system.

14

Tempo 1.

Handwritten musical score for the first system, measures 1-2. The system consists of four staves: two for the upper strings (Violin I and Violin II) and two for the piano (Right and Left Hand).
- Violin I: Measure 1 has a whole rest. Measure 2 has a quarter note G with a sharp sign, a quarter note F with a sharp sign, and a quarter note G with a sharp sign.
- Violin II: Measure 1 has a whole rest. Measure 2 has a whole rest.
- Piano RH: Measure 1 has a quarter note G with a sharp sign, a quarter note A with a sharp sign, a quarter note B with a flat sign, and a quarter note C with a flat sign. Measure 2 has a quarter note G with a sharp sign, a quarter note A with a sharp sign, a quarter note B with a flat sign, and a quarter note C with a flat sign.
- Piano LH: Measure 1 has a quarter note G with a sharp sign, a quarter note A with a sharp sign, a quarter note B with a flat sign, and a quarter note C with a flat sign. Measure 2 has a quarter note G with a sharp sign, a quarter note A with a sharp sign, a quarter note B with a flat sign, and a quarter note C with a flat sign.
- Dynamics: *pp* < is written above the Violin I staff in measure 2. *pp* is written above the Piano RH staff in measure 1. *sempre cres.* is written below the Piano RH staff in measure 2.

Handwritten musical score for the second system, measures 3-4. The system consists of four staves: two for the upper strings (Violin I and Violin II) and two for the piano (Right and Left Hand).
- Violin I: Measure 3 has a quarter note G with a sharp sign and a quarter note A with a sharp sign. Measure 4 has a quarter note G with a sharp sign and a quarter note A with a sharp sign.
- Violin II: Measure 3 has a quarter note G with a sharp sign and a quarter note A with a sharp sign. Measure 4 has a quarter note G with a sharp sign and a quarter note A with a sharp sign.
- Piano RH: Measure 3 has a quarter note G with a sharp sign, a quarter note A with a sharp sign, a quarter note B with a flat sign, and a quarter note C with a flat sign. Measure 4 has a quarter note G with a sharp sign, a quarter note A with a sharp sign, a quarter note B with a flat sign, and a quarter note C with a flat sign.
- Piano LH: Measure 3 has a quarter note G with a sharp sign, a quarter note A with a sharp sign, a quarter note B with a flat sign, and a quarter note C with a flat sign. Measure 4 has a quarter note G with a sharp sign, a quarter note A with a sharp sign, a quarter note B with a flat sign, and a quarter note C with a flat sign.
- Dynamics: *pp* = is written below the Violin I staff in measure 3. *f* is written below the Violin II staff in measure 3. *f* is written below the Violin II staff in measure 4. *f* is written below the Piano RH staff in measure 4.

Handwritten musical score for the third system, measures 5-6. The system consists of four staves: two for the upper strings (Violin I and Violin II) and two for the piano (Right and Left Hand).
- Violin I: Measure 5 has a quarter note G with a sharp sign and a quarter note A with a sharp sign. Measure 6 has a quarter note G with a sharp sign and a quarter note A with a sharp sign.
- Violin II: Measure 5 has a quarter note G with a sharp sign and a quarter note A with a sharp sign. Measure 6 has a quarter note G with a sharp sign and a quarter note A with a sharp sign.
- Piano RH: Measure 5 has a quarter note G with a sharp sign, a quarter note A with a sharp sign, a quarter note B with a flat sign, and a quarter note C with a flat sign. Measure 6 has a quarter note G with a sharp sign, a quarter note A with a sharp sign, a quarter note B with a flat sign, and a quarter note C with a flat sign.
- Piano LH: Measure 5 has a quarter note G with a sharp sign, a quarter note A with a sharp sign, a quarter note B with a flat sign, and a quarter note C with a flat sign. Measure 6 has a quarter note G with a sharp sign, a quarter note A with a sharp sign, a quarter note B with a flat sign, and a quarter note C with a flat sign.
- Dynamics: *mf* = is written below the Violin I staff in measure 5. *f* is written below the Violin II staff in measure 5. *f* is written below the Violin II staff in measure 6. *f* is written below the Piano RH staff in measure 6.
- A circled number '15' is written at the end of the system.

Handwritten musical score for the first system. It consists of three staves: Violin (top), Viola (middle), and Piano (bottom). The Violin staff begins with a circled 'F' and a double bar line, followed by a quarter note with a sharp sign. The Viola staff has a tremolo symbol and a dynamic marking 'f'. The Piano staff has a dynamic marking 'f' and a series of eighth notes. The system is divided into two measures by a vertical bar line.

Handwritten musical score for the second system. It consists of three staves: Violin (top), Viola (middle), and Piano (bottom). The Violin staff has a dynamic marking 'ff' and a triplet of eighth notes. The Viola staff has a dynamic marking 'ff' and a triplet of eighth notes. The Piano staff has a dynamic marking 'ff' and a series of eighth notes. The system is divided into two measures by a vertical bar line.

Handwritten musical score for the third system. It consists of three staves: Violin (top), Viola (middle), and Piano (bottom). The Violin staff has a dynamic marking 'ff' and a series of eighth notes. The Viola staff has a dynamic marking 'ff' and a series of eighth notes. The Piano staff has a dynamic marking 'ff' and a series of eighth notes. The system is divided into two measures by a vertical bar line. A circled number '16' is in the top right corner.

Handwritten musical score for the first system. It consists of three staves: Violin (top), Viola (middle), and Piano (bottom). The key signature is one sharp (F#) and the time signature is 9/8. The Violin part has a melodic line with a slur and an accent (^) over the first measure. The Viola part has a similar melodic line with a slur and an accent (^) over the first measure. The Piano part features a bass line with a slur and an accent (^) over the first measure, and a circled 'pizz' (pizzicato) marking below the first measure.

Handwritten musical score for the second system. It consists of three staves: Violin (top), Viola (middle), and Piano (bottom). The key signature is one sharp (F#) and the time signature is 9/8. The Violin part has a melodic line with a slur and an accent (^) over the first measure. The Viola part has a similar melodic line with a slur and an accent (^) over the first measure. The Piano part features a bass line with a slur and an accent (^) over the first measure, and an 'arco' marking above the first measure.

Handwritten musical score for the third system. It consists of three staves: Violin (top), Viola (middle), and Piano (bottom). The key signature is one sharp (F#) and the time signature is 9/8. The Violin part has a complex melodic line with a slur and an accent (^) over the first measure. The Viola part has a similar melodic line with a slur and an accent (^) over the first measure. The Piano part features a bass line with a slur and an accent (^) over the first measure.

Handwritten musical score for the first system, measures 1-3. The treble clef staff contains notes with accidentals (flats and sharps) and slurs. The bass clef staff contains notes with accidentals and slurs. A double bar line is present at the end of the first measure in the bass clef staff.

Handwritten musical score for the second system, measures 4-6. The treble clef staff contains notes with accidentals, slurs, and dynamic markings like 'f' and '>'. The bass clef staff contains notes with accidentals, slurs, and dynamic markings like 'f' and '>'. A double bar line is present at the end of the first measure in the bass clef staff.

Handwritten musical score for the third system, measures 7-9. The treble clef staff contains notes with accidentals, slurs, and dynamic markings like 'f' and '>'. The bass clef staff contains notes with accidentals, slurs, and dynamic markings like 'f' and '>'. A double bar line is present at the end of the first measure in the bass clef staff.

Handwritten musical score for the first system, measures 12-13. It features two staves with treble and bass clefs, and two staves with piano (p) dynamics. The notation includes various notes, rests, and accidentals.

Handwritten musical score for the second system, measures 14-15. It features two staves with treble and bass clefs, and two staves with piano (p) dynamics. Measure 15 is circled in red. The notation includes various notes, rests, and accidentals.

Handwritten musical score for the third system, measures 16-17. It is labeled "ORCH" and features two staves with treble and bass clefs. Measure 17 is circled in red. The notation includes various notes, rests, and accidentals.

Orch

20

(letzten 2 Takte nochmals)

21

gr. rit + dim

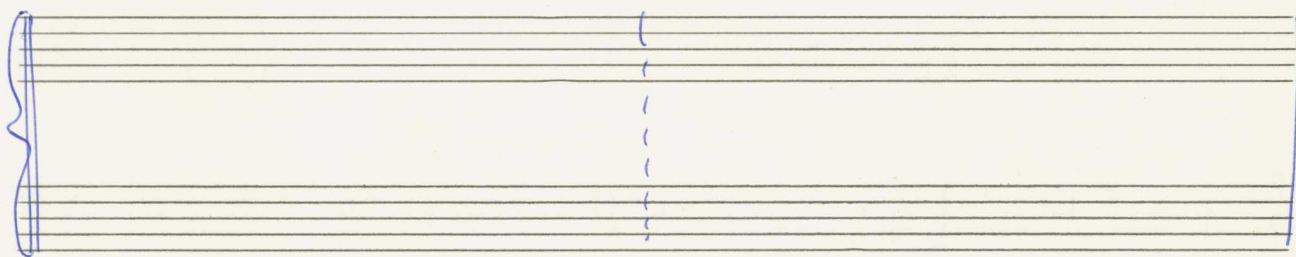
22

gröses rit - dim ..

23

1. Soli

2. Soli



ORCH

Fin

Lunga

G.P.

Lento (♩ sehr langsam)

(solo viol.)

pp (con sord.) 3

ORCH.

alle

Br. (alle con sord.)

1

Handwritten musical score for the first system. It consists of three staves: a grand staff (left hand and right hand) and a piano staff. The grand staff has a treble clef and a key signature of one sharp (F#). The piano staff has a bass clef and a key signature of one sharp (F#). The music is in 4/4 time. The first measure shows a piano (pp) dynamic. The second measure has a piano (p) dynamic. The third measure has a piano (p) dynamic. There are various notes, rests, and dynamic markings throughout the system.

Handwritten musical score for the second system. It consists of three staves: a grand staff and a piano staff. The grand staff has a treble clef and a key signature of one sharp (F#). The piano staff has a bass clef and a key signature of one sharp (F#). The music is in 4/4 time. The first measure has a mezzo-forte (mf) dynamic. The second measure has a mezzo-forte (mf) dynamic. The third measure has a forte (f) dynamic. There are various notes, rests, and dynamic markings throughout the system.

Handwritten musical score for the third system. It consists of three staves: a grand staff and a piano staff. The grand staff has a treble clef and a key signature of one sharp (F#). The piano staff has a bass clef and a key signature of one sharp (F#). The music is in 4/4 time. The first measure has a forte (f) dynamic. The second measure has a fortissimo (ff) dynamic. The third measure has a fortissimo (ff) dynamic. There are various notes, rests, and dynamic markings throughout the system.

Handwritten musical score for the first system, measures 1-3. The top staff is in treble clef, starting with a melodic line marked *ff*. The grand staff below (piano and bass clefs) provides accompaniment. Dynamics include *ff*, *p*, and *pp*. A *dim* marking is present in the second measure.

Handwritten musical score for the second system, measures 4-6. The melodic line continues with dynamics *pp =*. The piano accompaniment includes *pp (pizz)* markings.

Handwritten musical score for the third system, measures 7-10. The melodic line continues with dynamics *mf* and *f =*. The piano accompaniment includes *f =* markings.

breit (appassionata)

Handwritten musical score for the first system, measures 1-2. The piano part consists of chords in the right hand and single notes in the left hand. The violin part has a melodic line with slurs. Dynamics include *mf* and *ppp*. The word *arco* is written above the violin staff. A circled 'P33' is written in the left margin.

Handwritten musical score for the second system, measures 3-4. The piano part continues with chords and notes. The violin part has a melodic line. A circled '4' is at the end of the system.

Handwritten musical score for the third system, measures 5-7. The piano part has chords and notes. The violin part has a melodic line. Dynamics include *f* and *ppp*. The word *arco* is written above the violin staff. There are handwritten annotations in German: "größer rit... dünn..." and "(frei)". A circled '5' is at the end of the system.

Handwritten musical score for a string orchestra, consisting of three systems of staves. The first system includes a piano part with "CON SORD." marking. The second system features a woodwind part with "ppp" dynamics and a string part with "ppp" dynamics. The third system includes a woodwind part with "ppp" dynamics and a string part with "pppp" dynamics and "Bewegungen" marking. The score is marked with circled numbers 6 and 7.

accel.

8

Handwritten musical score for measures 8-10. The piano part (treble and bass clef) features complex chords and some double lines. The string part (treble clef) has a dynamic marking 'pppp' and 'f' with a crescendo hairpin.

(sehr breit) appassionato (frei)

Handwritten musical score for measures 11-13, labeled '1 Solo' and '2 Solo'. It shows two solo parts with treble and bass clefs, featuring melodic lines and some slurs.

Handwritten musical score for measures 14-16. It features a piano part with a treble and bass clef. The piano part has a dynamic marking 'accel.' and 'gr. rit...'. The string part has a dynamic marking 'pp'.

breit - gr. rit + dim....

10

Handwritten musical score for measures 17-20. It features a piano part with a treble and bass clef. The piano part has a dynamic marking 'pp' and 'pp'. The string part has a dynamic marking 'pp'.

$\text{♩} = 1$

ORCH. $\frac{4}{16}$ ppp
(CONCORD)

11

ORCH.

1 Solo
2 Solo

(frei - quasi Kadenz)

CONCORD: pppp

CONCORD:

1 Solo

2 Solo

pppp

ff (energico)

ff

ORCH.

pppp

pppp

accel. →

accel.

accel.

12

PRESTO

Handwritten musical score for the first system. It consists of two staves. The top staff is a treble clef with a 2/8 time signature. The bottom staff is a bass clef. Both staves are marked with 'arco' and 'ff'. The music features a series of chords and melodic lines, with some notes beamed together. The key signature has one sharp (F#).

Handwritten musical score for the second system. It consists of two staves. The top staff is a treble clef and the bottom staff is a bass clef. The music is marked with 'ff' and 'arco'. Above the first measure, the instruction 'color breit (pesante)' is written. The music features long, sustained notes and chords, with some melodic movement in the bass line.

Handwritten musical score for the third system. It consists of two staves. The top staff is a treble clef and the bottom staff is a bass clef. The music continues with sustained notes and chords, showing some melodic development in both staves. The key signature remains one sharp.

Handwritten musical score for measures 12 and 13. Measure 12 features a piano part with a half note $\#d$ and a bass line with a half note b and a quarter note g . Measure 13 is marked with a circled "13" and "(sul G)". It contains a triplet of eighth notes in the piano part: $\#g$, a , $\#b$. The bass line has a quarter note $\#g$ and a triplet of eighth notes: a , b , $\#c$. A fermata is placed over the final notes of measure 13.

gr. dim + rit.....

Handwritten musical score for measures 14 and 15. Measure 14 shows a piano part with a half note b and a quarter note a , followed by a half note b and a quarter note g . The bass line has a half note b and a quarter note g . Measure 15 features a piano part with a half note $\#g$ and a quarter note a , followed by a half note $\#g$ and a quarter note a . The bass line has a half note $\#g$ and a quarter note a . A fermata is placed over the final notes of measure 15.

Handwritten musical score for measures 14 and 15. Measure 14 is marked with a boxed "14" and contains a piano part with a half note $\#g$ and a quarter note a , followed by a half note $\#g$ and a quarter note a . The bass line has a half note $\#g$ and a quarter note a . Measure 15 is marked with a boxed "15" and contains a piano part with a half note $\#g$ and a quarter note a , followed by a half note $\#g$ and a quarter note a . The bass line has a half note $\#g$ and a quarter note a . A fermata is placed over the final notes of measure 15. The score includes dynamic markings p , pp , and pp , and performance instructions "D.C.", "al", and " ϕ ".

♩

Handwritten musical score for the first system. It consists of five staves. The top two staves are for piano, with notes indicated by horizontal lines. The third staff is for violin, and the fourth for viola. The bottom staff is for cello and double bass. The music is marked *ppp* (pianissimo) and includes the instruction *(CON SORD.)* (with mutes). The notation includes various chords and melodic lines with slurs and accents.

Handwritten musical score for the second system. It consists of five staves. The top two staves are for piano, with notes indicated by horizontal lines. The third staff is for violin, and the fourth for viola. The bottom staff is for cello and double bass. The music is marked *ppp* and includes the instruction *Lunga* (long). The notation includes various chords and melodic lines with slurs and accents.

FIN

Five empty musical staves, each consisting of five horizontal lines, arranged vertically.

3

Andagio

pp

accel.

Allegro vivace

Handwritten musical score for the first system, measures 1-3. The score is written for piano and violin. The piano part is in 2/2 time and includes a circled 'f' dynamic marking and a circled 'pizz' marking. The violin part features a circled '3' indicating a triplet. The piano part includes a circled 'pizz' marking.

Handwritten musical score for the second system, measures 4-6. The score is written for piano and violin. The piano part has a circled 'f' dynamic marking and a circled 'arco' marking. The violin part has a circled 'arco' marking. The piano part includes a circled 'pizz' marking.

Handwritten musical score for the third system, measures 7-9. The score is written for piano and violin. The piano part has a circled 'f' dynamic marking. The violin part has a circled 'arco' marking. The piano part includes a circled 'pizz' marking.

Handwritten musical score for the first system, measures 1-3. The system includes a grand staff with treble and bass clefs. The right hand (RH) contains melodic lines with various accidentals (sharps, flats, naturals) and slurs. The left hand (LH) features sustained notes with dynamic markings like *ppp* and *cresc.* indicated by a wedge. A circled '5' is in the top right corner.

Handwritten musical score for the second system, measures 4-6. Similar to the first system, it shows RH and LH staves. The RH has more complex melodic patterns. The LH part includes the instruction "ppp cluster (cresc. →)" with a wedge indicating a crescendo. A circled '6' is in the top right corner.

Handwritten musical score for the third system, measures 7-9. The RH continues with melodic lines. The LH part is mostly blank with some horizontal lines and dynamic markings like *ppp* and *cresc.* in the first measure. A circled '6' is in the top right corner.

Handwritten musical score for the first system. The top staff is in treble clef with a key signature of one flat (B-flat). The piano accompaniment is in grand staff. The piano part includes chords with a circled 'f' dynamic marking and bracketed intervals.

Handwritten musical score for the second system. The top staff continues the melodic line. The piano accompaniment features eighth-note patterns and chords with bracketed intervals.

Handwritten musical score for the third system. The top staff concludes the melodic line. The piano accompaniment includes a circled 'ff' dynamic marking and various chordal textures.

7

Handwritten musical score for system 7, measures 1-4. The first two measures show a string section with a tremolo effect labeled "Gliss." and a woodwind section with notes. The last two measures show a piano accompaniment with chords.

Handwritten musical score for system 8, measures 1-4. The first two measures show a woodwind section with notes. The last two measures show a piano accompaniment with chords.

8

Handwritten musical score for system 9, measures 1-4. The first two measures show a woodwind section with notes. The last two measures show a piano accompaniment with chords.

Handwritten musical score for the first system. The top staff contains a wavy line with four groups of four notes each, marked with the number '4'. The middle and bottom staves show a piano accompaniment with chords and notes, including a circled '10' at the end of the first measure.

Handwritten musical score for the second system. Similar to the first system, it features a wavy line with four groups of four notes in the top staff. The piano accompaniment in the bottom staves includes a circled '10' and a circled '11'.

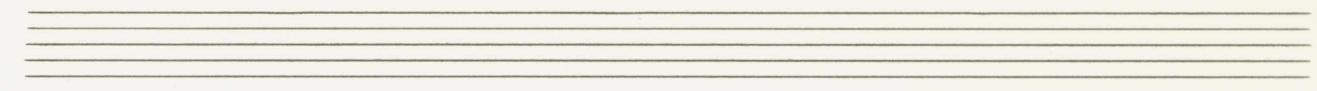
Handwritten musical score for the third system. The top two staves are mostly empty with some horizontal lines. The bottom two staves contain a piano accompaniment with notes, slurs, and dynamic markings such as 'p' and 'ppp'.

(sempre crescendo)

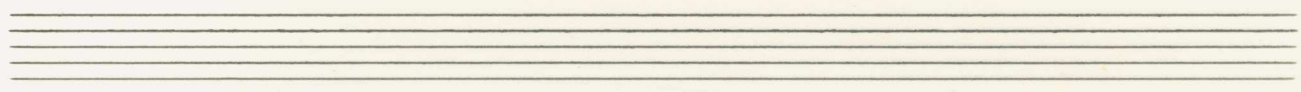
Handwritten musical score for the first system. It consists of four staves. The top two staves are for piano, with dynamics *pp* and *pp =*. The bottom two staves are for strings, with dynamics *ppp* and *ppp*. The key signature is one flat (B-flat), and the time signature is 8/8. The piano part features a melodic line with eighth notes and a half note, while the strings play sustained chords.

cresc. →

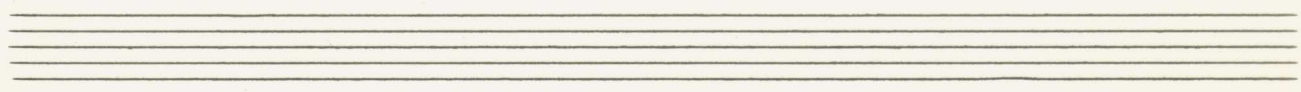
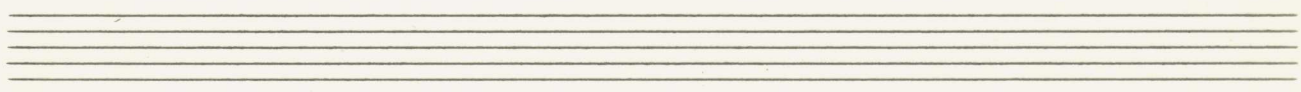
Handwritten musical score for the second system. It consists of four staves. The top two staves are for piano, with dynamics *f* and *f =*. The bottom two staves are for strings, with dynamics *mf =* and *f =*. The key signature is one flat (B-flat), and the time signature is 8/8. The piano part features a melodic line with eighth notes and a half note, while the strings play sustained chords. A circled 'c' is written in the second measure of the piano part. A box containing the number '11' is located in the upper right corner of the system.



Handwritten musical score for the first system, featuring a string quartet and piano accompaniment. The notation includes notes, rests, slurs, and dynamic markings.

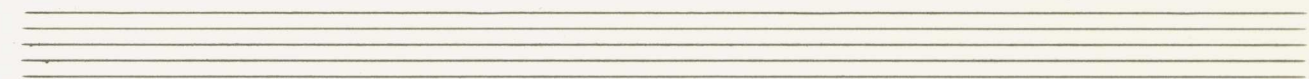


Handwritten musical score for the second system, featuring a string quartet and piano accompaniment. The notation includes notes, rests, slurs, and dynamic markings.

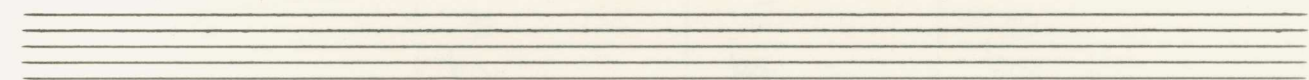


Handwritten musical score for the first system. It consists of two staves with notes and rests, and a grand staff below. The notes in the two staves are: b^b , $\#^b$, g , $\#^d$, g , b^b in the first staff; and b^b , $\#^b$, g , $\#^g$, g , b^b in the second staff. The grand staff shows rhythmic patterns with stems and beams.

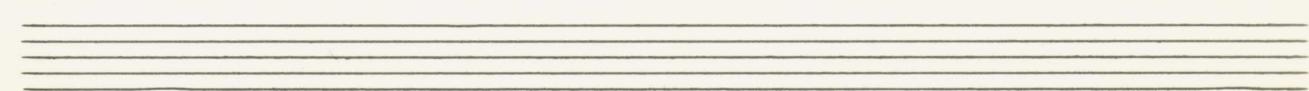
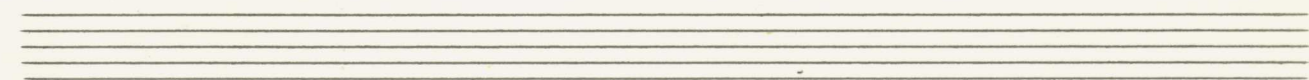
Handwritten musical score for the second system. It includes a circled measure number '12'. The notation features notes with accents (^) and various symbols. The notes in the two staves are: b^b , $\#^g$, b^b , g , $\#^g$, $\#^g$ in the first staff; and b^b , $\#^g$, b^b , g , g , $\#^g$ in the second staff. The grand staff shows rhythmic patterns with stems and beams.



Handwritten musical score for the first system, consisting of five staves. The top two staves are for a string pair, with two horizontal lines in the first measure and two in the second. The middle two staves are for a woodwind pair, with notes and slurs in both measures. The bottom staff is for a bass line, with notes and slurs in both measures. A sharp sign is written in the first measure of the woodwind staff.



Handwritten musical score for the second system, consisting of five staves. The top two staves are for a string pair, with two horizontal lines in the first measure and two in the second. The middle two staves are for a woodwind pair, with notes and slurs in both measures. The bottom staff is for a bass line, with notes and slurs in both measures. A sharp sign is written in the first measure of the woodwind staff. A circled number "13" is in the top right corner, and a double bar line with repeat dots is at the end of the system.



(frei)

Handwritten musical score for the first system. It consists of two staves joined by a brace on the left. The top staff has a treble clef and contains a note with a sharp sign and a dynamic marking of *pp* with an accent. The bottom staff also has a treble clef and contains a note with a sharp sign and a dynamic marking of *pp* with an accent. A large blue slur covers the notes across both staves.

14

Handwritten musical score for the second system. It consists of two staves joined by a brace on the left. The top staff has a treble clef and contains a note with a sharp sign and a dynamic marking of *pp* with an accent. The bottom staff also has a treble clef and contains a note with a sharp sign and a dynamic marking of *pp* with an accent. A large blue slur covers the notes across both staves.

Tempo 1. (sempre cresc.....) →

ERCH

$\frac{2}{2}$ ppp =

15

mf =

f =

16

f.c.
v.
Allegro
Vivace

17

18

Handwritten musical score for a string orchestra, consisting of three systems of staves. The notation includes various chords, melodic lines, and dynamic markings such as 'f' and 'p'. A circled number '19' is visible at the end of the third system.

(20)

Handwritten musical score for the first system, measures 19-21. The piano part (left hand) consists of chords and a melodic line in the right hand. The piano part includes a circled '20' above the first measure. The right hand has a melodic line with slurs and accents.

Handwritten musical score for the second system, measures 22-24. The piano part (left hand) consists of chords and a melodic line in the right hand. The piano part includes a circled '20' above the first measure. The right hand has a melodic line with slurs and accents.

Handwritten musical score for the third system, measures 25-27. The piano part (left hand) consists of chords and a melodic line in the right hand. The piano part includes a circled '20' above the first measure. The right hand has a melodic line with slurs and accents.

Handwritten musical score for the first system, measures 1-2. The system includes three staves: Violin (top), Viola (middle), and Cello/Bass (bottom). The Violin part has a long slur over two measures, with notes G#4 and G#4 in the first measure, and B4 and G#4 in the second. The Viola part has a slur over two measures, with notes G#4 and G#4 in the first measure, and B4 and G#4 in the second. The Cello/Bass part has a slur over two measures, with notes G#4 and G#4 in the first measure, and B4 and G#4 in the second. The Cello/Bass part is marked 'arco' in the second measure. The first measure is marked 'P133'.

Handwritten musical score for the second system, measures 3-4. The system includes three staves: Violin (top), Viola (middle), and Cello/Bass (bottom). The Violin part has a slur over two measures, with notes G#4 and G#4 in the first measure, and B4 and G#4 in the second. The Viola part has a slur over two measures, with notes G#4 and G#4 in the first measure, and B4 and G#4 in the second. The Cello/Bass part has a slur over two measures, with notes G#4 and G#4 in the first measure, and B4 and G#4 in the second. The Cello/Bass part is marked 'pp' in the second measure. The first measure is marked 'pp P133 cresc.'.

Handwritten musical score for the third system, measures 5-6. The system includes three staves: Violin (top), Viola (middle), and Cello/Bass (bottom). The Violin part has a slur over two measures, with notes G#4 and G#4 in the first measure, and B4 and G#4 in the second. The Viola part has a slur over two measures, with notes G#4 and G#4 in the first measure, and B4 and G#4 in the second. The Cello/Bass part has a slur over two measures, with notes G#4 and G#4 in the first measure, and B4 and G#4 in the second. The Cello/Bass part is marked 'pp' in the second measure.

Handwritten musical score for the first system. It consists of three staves: Violin (top), Viola (middle), and Piano (bottom). The Violin staff has a treble clef and contains several chords and melodic lines with dynamic markings like f and mf . The Viola staff has a treble clef and contains chords and melodic lines with dynamic markings like f . The Piano staff has a grand staff (treble and bass clefs) and contains chords and melodic lines with dynamic markings like mf . There are various musical notations including slurs, accents, and dynamic markings throughout the system.

Handwritten musical score for the second system. It consists of three staves: Violin (top), Viola (middle), and Piano (bottom). The Violin staff has a treble clef and contains several chords and melodic lines with dynamic markings like f . The Viola staff has a treble clef and contains chords and melodic lines with dynamic markings like f . The Piano staff has a grand staff (treble and bass clefs) and contains chords and melodic lines with dynamic markings like f . There are various musical notations including slurs, accents, and dynamic markings throughout the system.

Handwritten musical score for the third system. It consists of three staves: Violin (top), Viola (middle), and Piano (bottom). The Violin staff has a treble clef and contains several chords and melodic lines with dynamic markings like f . The Viola staff has a treble clef and contains chords and melodic lines with dynamic markings like f . The Piano staff has a grand staff (treble and bass clefs) and contains chords and melodic lines with dynamic markings like f . There are various musical notations including slurs, accents, and dynamic markings throughout the system.

accel

23

Handwritten musical score for page 23. The score is written on four staves. The top two staves are for piano (treble and bass clefs) and the bottom two are for violin (treble and bass clefs). The piano part features a series of chords and melodic lines with various accidentals (flats, sharps, naturals) and dynamics like f and mf . The violin part has a melodic line with slurs and accents. The word "accel." is written at the bottom right of the page.

(so rasch als möglich)

24

Handwritten musical score for page 24. The score is written on four staves. The top two staves are for piano (treble and bass clefs) and the bottom two are for violin (treble and bass clefs). The piano part features complex chordal structures with many accidentals and dynamics like f and mf . The violin part has a melodic line with slurs and accents. The word "accel." is written at the bottom right of the page.

ORCH

letzten 4 Takte nochmals

25

Handwritten musical score for page 25. The score is written on four staves. The top two staves are for piano (treble and bass clefs) and the bottom two are for violin (treble and bass clefs). The staves are mostly empty, with performance instructions written below them. The word "accel." is written in the center, and "4 (Takte) Block f ORCHESTER" is written at the bottom.

pp (reverse crescendo)

26

27

28

