

**Notenheft**

I.

lento

Handwritten musical notation for the first system. It consists of two staves. The top staff is in treble clef with a 4/8 time signature and a 'pp' dynamic marking. It contains a melodic line with a slur over the first two measures and a fermata over the second measure. The bottom staff is in bass clef and contains a simple accompaniment line with a fermata over the second measure.

Handwritten musical notation for the second system. It consists of two staves. The top staff is in treble clef and contains a melodic line with a slur over the first two measures and a fermata over the second measure. The bottom staff is in bass clef and contains a simple accompaniment line with a slur over the first two measures and a fermata over the second measure.

Handwritten musical notation for the third system. It consists of two staves. The top staff is in treble clef and contains a melodic line with a slur over the first two measures and a fermata over the second measure. The bottom staff is in bass clef and contains a simple accompaniment line with a slur over the first two measures and a fermata over the second measure.

(2. x großes mit - - - -) und A.)

II.

Adagio brevitè  $\frac{6}{8}$

Handwritten musical notation for the first system. It consists of two staves: a treble clef staff and a bass clef staff. The treble staff contains a melodic line with notes including G4, A4, B4, C5, and D5, with various accidentals (sharps and flats) and a fermata. The bass staff contains a bass line with notes G2, F2, and E2. A large slur covers the entire system.

Handwritten musical notation for the second system. It features two staves. The treble staff has notes G4, A4, B4, C5, and D5. The bass staff has notes G2, F2, and E2. A circled '1' is written above the treble staff. Dynamic markings 'p' and 'pp' are present. A large slur covers the system.

Handwritten musical notation for the third system. It features two staves. The treble staff has notes G4, A4, B4, C5, and D5. The bass staff has notes G2, F2, and E2. A circled 'FINE' is written at the end of the system. A large slur covers the system.

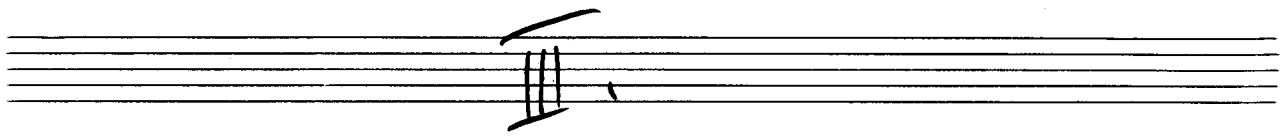
letzte + ev. gut und

Handwritten musical notation for the first system. It consists of two staves: a treble clef staff and a bass clef staff. A circled 'P' is written in the first measure of the bass staff. A long slur arches over the first three measures of both staves. The notation includes various notes, rests, and chord symbols.

Handwritten musical notation for the second system. It consists of two staves: a treble clef staff and a bass clef staff. A long slur arches over the first four measures of both staves. The notation includes various notes, rests, and chord symbols.

Handwritten musical notation for the third system. It consists of two staves: a treble clef staff and a bass clef staff. A long slur arches over the first four measures of both staves. The notation includes various notes, rests, and chord symbols.

Handwritten musical notation for the fourth system. It consists of two staves: a treble clef staff and a bass clef staff. A long slur arches over the first two measures of both staves. The notation includes various notes, rests, and chord symbols. At the end of the system, the text "D.C. al Fine" is written.



*schöne ruhige Achtel*

Handwritten musical notation for the first system. The treble clef part begins with a half note F#4, followed by a quarter note G#4, and a quarter note A4. The bass clef part has a half note G3. The second measure features a treble clef half note B#4 and a bass clef half note G3.

Handwritten musical notation for the second system. The treble clef part starts with a half note B#4, followed by a quarter note C#5, and a quarter note D5. The bass clef part has a half note G3. The second measure features a treble clef half note C#5 and a bass clef half note G3.

Handwritten musical notation for the third system. The treble clef part starts with a half note B4, followed by a quarter note C5, and a quarter note D5. The bass clef part has a half note G3. The second measure features a treble clef half note C5 and a bass clef half note G3. The system ends with a boxed-in section containing the marking "D.C.".

Handwritten musical notation for the fourth system. The treble clef part starts with a half note D5, followed by a quarter note E5, and a quarter note F5. The bass clef part has a half note G3. The second measure features a treble clef half note E5 and a bass clef half note G3. The system concludes with a fermata over a half note D5 in the treble clef and a half note G3 in the bass clef, followed by a signature.

IV.

Presto (7#) voll Werk

Handwritten musical notation for the first system. The treble clef staff has a 3/4 time signature and a key signature of three sharps (F#, C#, G#). The bass clef staff has a 4/4 time signature. The music consists of two measures. The first measure contains a treble staff with notes G#4, A4, B4, C#5, D5, E5 and a bass staff with notes G#2, A2, B2, C#3, D3, E3. The second measure contains a treble staff with notes F#4, G4, A4, B4, C#5, D5 and a bass staff with notes G#2, A2, B2, C#3, D3, E3. There are dynamic markings 'ff' and 'p'.

Handwritten musical notation for the second system. The treble clef staff has a 3/4 time signature and a key signature of three sharps. The bass clef staff has a 4/4 time signature. The music consists of two measures. The first measure contains a treble staff with notes G#4, A4, B4, C#5, D5, E5 and a bass staff with notes G#2, A2, B2, C#3, D3, E3. The second measure contains a treble staff with notes F#4, G4, A4, B4, C#5, D5 and a bass staff with notes G#2, A2, B2, C#3, D3, E3. There are dynamic markings 'p' and 'f'.

Handwritten musical notation for the third system. The treble clef staff has a 3/4 time signature and a key signature of three sharps. The bass clef staff has a 4/4 time signature. The music consists of two measures. The first measure contains a treble staff with notes G#4, A4, B4, C#5, D5, E5 and a bass staff with notes G#2, A2, B2, C#3, D3, E3. The second measure contains a treble staff with notes F#4, G4, A4, B4, C#5, D5 and a bass staff with notes G#2, A2, B2, C#3, D3, E3. There are dynamic markings 'p' and 'f'.



Handwritten musical notation for the first system. The treble clef staff contains notes with accidentals: G#4, A4, B4, C5, D5, E5, F#5, G#5, A5, B5. The bass clef staff contains notes with accidentals: G#2, A2, B2, C3, D3, E3, F#3, G#3, A3, B3. There are also some handwritten symbols like '9.' and '33' below the bass staff.

Handwritten musical notation for the second system. The treble clef staff contains notes with accidentals: G#4, A4, B4, C5, D5, E5, F#5, G#5, A5, B5. The bass clef staff contains notes with accidentals: G#2, A2, B2, C3, D3, E3, F#3, G#3, A3, B3. There are also some handwritten symbols like '9.' and '33' below the bass staff.

Handwritten musical notation for the third system. The treble clef staff contains notes with accidentals: G#4, A4, B4, C5, D5, E5, F#5, G#5, A5, B5. The bass clef staff contains notes with accidentals: G#2, A2, B2, C3, D3, E3, F#3, G#3, A3, B3. There is a '3x' marking above the treble staff. There are also some handwritten symbols like '9.' and '33' below the bass staff.

Handwritten musical notation for the fourth system. The treble clef staff contains notes with accidentals: G#4, A4, B4, C5, D5, E5, F#5, G#5, A5, B5. The bass clef staff contains notes with accidentals: G#2, A2, B2, C3, D3, E3, F#3, G#3, A3, B3. There is a 'Fragio' marking above the treble staff. There are also some handwritten symbols like '9.' and '33' below the bass staff.

II.

sehr ruhige  $\frac{6}{4}$

Adagio

Handwritten musical notation for the first system. The treble clef part begins with a key signature of one sharp (F#) and a 6/4 time signature. The first measure contains a dotted half note G4, followed by quarter notes A4, B4, and C5. The second measure contains a dotted half note D5. The bass clef part begins with a 6/4 time signature. The first measure contains a dotted half note G3, followed by quarter notes A3, B3, and C4. The second measure contains a dotted half note D4. The system concludes with a double bar line and repeat signs.

Handwritten musical notation for the second system. The treble clef part continues with a dotted half note E5, followed by quarter notes F#5, G5, and A5. The second measure contains a dotted half note B5. The bass clef part continues with a dotted half note E4, followed by quarter notes F#4, G4, and A4. The second measure contains a dotted half note B4. The system concludes with a double bar line and repeat signs.

Handwritten musical notation for the third system. The treble clef part begins with a key signature of two sharps (F# and C#) and a 6/4 time signature. The first measure contains a dotted half note G4, followed by quarter notes A4, B4, and C5. The second measure contains a dotted half note D5. The bass clef part begins with a 6/4 time signature. The first measure contains a dotted half note G3, followed by quarter notes A3, B3, and C4. The second measure contains a dotted half note D4. The system concludes with a double bar line and repeat signs.

Handwritten musical notation for the first system. The treble staff contains notes with accidentals:  $\#d$ ,  $\#e$ ,  $\#f$ ,  $\#g$ ,  $\#a$ . The bass staff contains notes with accidentals:  $\#g$ ,  $\#f$ ,  $\#e$ ,  $\#d$ ,  $\#c$ . A large slur covers both staves. The system ends with a double bar line and a repeat sign.

Handwritten musical notation for the second system. The treble staff contains notes with accidentals:  $\#d$ ,  $\#e$ ,  $\#f$ ,  $\#g$ ,  $\#a$ . The bass staff contains notes with accidentals:  $\#g$ ,  $\#f$ ,  $\#e$ ,  $\#d$ ,  $\#c$ . A large slur covers both staves. The system ends with a double bar line and a repeat sign.

Handwritten musical notation for the third system. The treble staff contains notes with accidentals:  $\#d$ ,  $\#e$ ,  $\#f$ ,  $\#g$ ,  $\#a$ . The bass staff contains notes with accidentals:  $\#g$ ,  $\#f$ ,  $\#e$ ,  $\#d$ ,  $\#c$ . A large slur covers both staves. The system ends with a double bar line and a repeat sign.

Handwritten musical notation for the fourth system. The treble staff contains notes with accidentals:  $\#d$ ,  $\#e$ ,  $\#f$ ,  $\#g$ ,  $\#a$ . The bass staff contains notes with accidentals:  $\#g$ ,  $\#f$ ,  $\#e$ ,  $\#d$ ,  $\#c$ . A large slur covers both staves. The system ends with a double bar line and a repeat sign.

VI.

*Andante*

Handwritten musical score for the first system. It consists of a grand staff with a treble clef on the upper staff and a bass clef on the lower staff. The music is written in a key with one sharp (F#) and a 9/8 time signature. The upper staff contains a melodic line with many accidentals and a fermata. The lower staff contains a bass line with fewer notes and a fermata. Dynamic markings 'ff' are present in both staves. A large bracket spans across both staves, and a '9.' is written below the staff.

Handwritten musical score for the second system. It continues the notation from the first system. The upper staff has a melodic line with a fermata. The lower staff has a bass line with a fermata. Dynamic markings 'ff' are present. A large bracket spans across both staves, and a '9.' is written below the staff.

Handwritten musical score for the first system. The treble clef staff has a sharp sign (F#) above it. The bass clef staff has a sharp sign (F#) below it. The music consists of three measures. The first measure has a treble clef with a sharp sign and a bass clef with a sharp sign. The second measure has a treble clef with a sharp sign and a bass clef with a sharp sign. The third measure has a treble clef with a sharp sign and a bass clef with a sharp sign. There are dynamic markings 'p' and 'f' in the bass staff.

Handwritten musical score for the second system. The treble clef staff has a sharp sign (F#) above it. The bass clef staff has a sharp sign (F#) below it. The music consists of three measures. The first measure has a treble clef with a sharp sign and a bass clef with a sharp sign. The second measure has a treble clef with a sharp sign and a bass clef with a sharp sign. The third measure has a treble clef with a sharp sign and a bass clef with a sharp sign. There are dynamic markings 'p' and 'f' in the bass staff.

Handwritten musical score for the third system. The treble clef staff has a sharp sign (F#) above it. The bass clef staff has a sharp sign (F#) below it. The music consists of three measures. The first measure has a treble clef with a sharp sign and a bass clef with a sharp sign. The second measure has a treble clef with a sharp sign and a bass clef with a sharp sign. The third measure has a treble clef with a sharp sign and a bass clef with a sharp sign. There are dynamic markings 'p' and 'f' in the bass staff.

Handwritten musical score for the first system. The system consists of three staves: a treble clef staff at the top, a middle staff (likely for the right hand of a keyboard instrument), and a bass clef staff at the bottom. The treble staff contains several notes with accidentals (flats and naturals) and rests. The middle staff contains complex chordal structures with many notes and accidentals. The bass staff contains a simple melodic line with notes and rests.

Handwritten musical score for the second system. It follows the same three-staff format as the first system. The treble staff has notes with accidentals and rests. The middle staff continues with complex chordal textures. The bass staff has a melodic line with notes and rests.

Handwritten musical score for the third system. It follows the same three-staff format. The treble staff has notes with accidentals and rests. The middle staff continues with complex chordal textures. The bass staff has a melodic line with notes and rests.

Handwritten musical score for the first system. It consists of three staves. The top staff is in treble clef with a key signature of one flat (B-flat). It contains a whole note chord, a measure with a fermata and a 3/4 time signature, and another measure with a fermata and a 3/4 time signature. The middle staff is in bass clef with a key signature of one flat. It contains a whole note chord, a measure with a fermata and a 3/4 time signature, and another measure with a fermata and a 3/4 time signature. The bottom staff is in bass clef with a key signature of one flat. It contains a whole note chord, a measure with a fermata and a 3/4 time signature, and another measure with a fermata and a 3/4 time signature.

Handwritten musical score for the second system. It consists of three staves. The top staff is in treble clef with a key signature of one flat. It contains a whole note chord, a measure with a fermata and a 3/4 time signature, and another measure with a fermata and a 3/4 time signature. The middle staff is in bass clef with a key signature of one flat. It contains a whole note chord, a measure with a fermata and a 3/4 time signature, and another measure with a fermata and a 3/4 time signature. The bottom staff is in bass clef with a key signature of one flat. It contains a whole note chord, a measure with a fermata and a 3/4 time signature, and another measure with a fermata and a 3/4 time signature.

Handwritten musical score for the third system. It consists of three staves. The top staff is in treble clef with a key signature of one flat. It contains a whole note chord, a measure with a fermata and a 3/4 time signature, and another measure with a fermata and a 3/4 time signature. The middle staff is in bass clef with a key signature of one flat. It contains a whole note chord, a measure with a fermata and a 3/4 time signature, and another measure with a fermata and a 3/4 time signature. The bottom staff is in bass clef with a key signature of one flat. It contains a whole note chord, a measure with a fermata and a 3/4 time signature, and another measure with a fermata and a 3/4 time signature.

VII.

(ist gleich (I.) 22 Takte  
mit langsam  $\odot$  ||.