

L.v. BEETHOVEN



W.A. MOZART



NOTENHEFT

F. SCHUBERT



J. HAYDN



J. STRAUSS



Schw. v. v. i. g. (Klangraum)

(alle Klänge nach E-Dur Σ | oder Σ S-Dur) transponieren!

Korrigierte
auf E-Dur
notiert

1. Kl.
2. Kl.

Basso

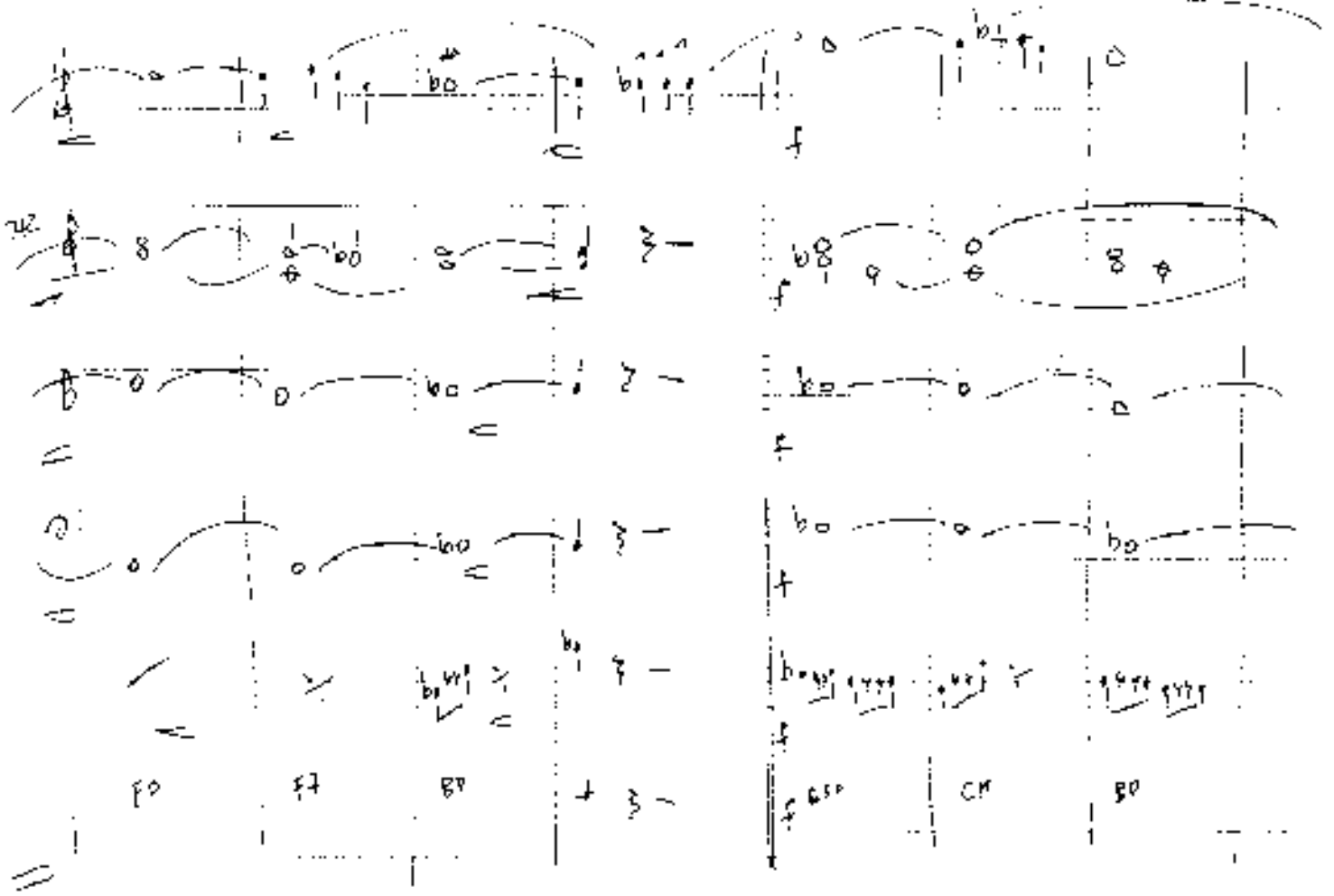
Cello

E-Bass

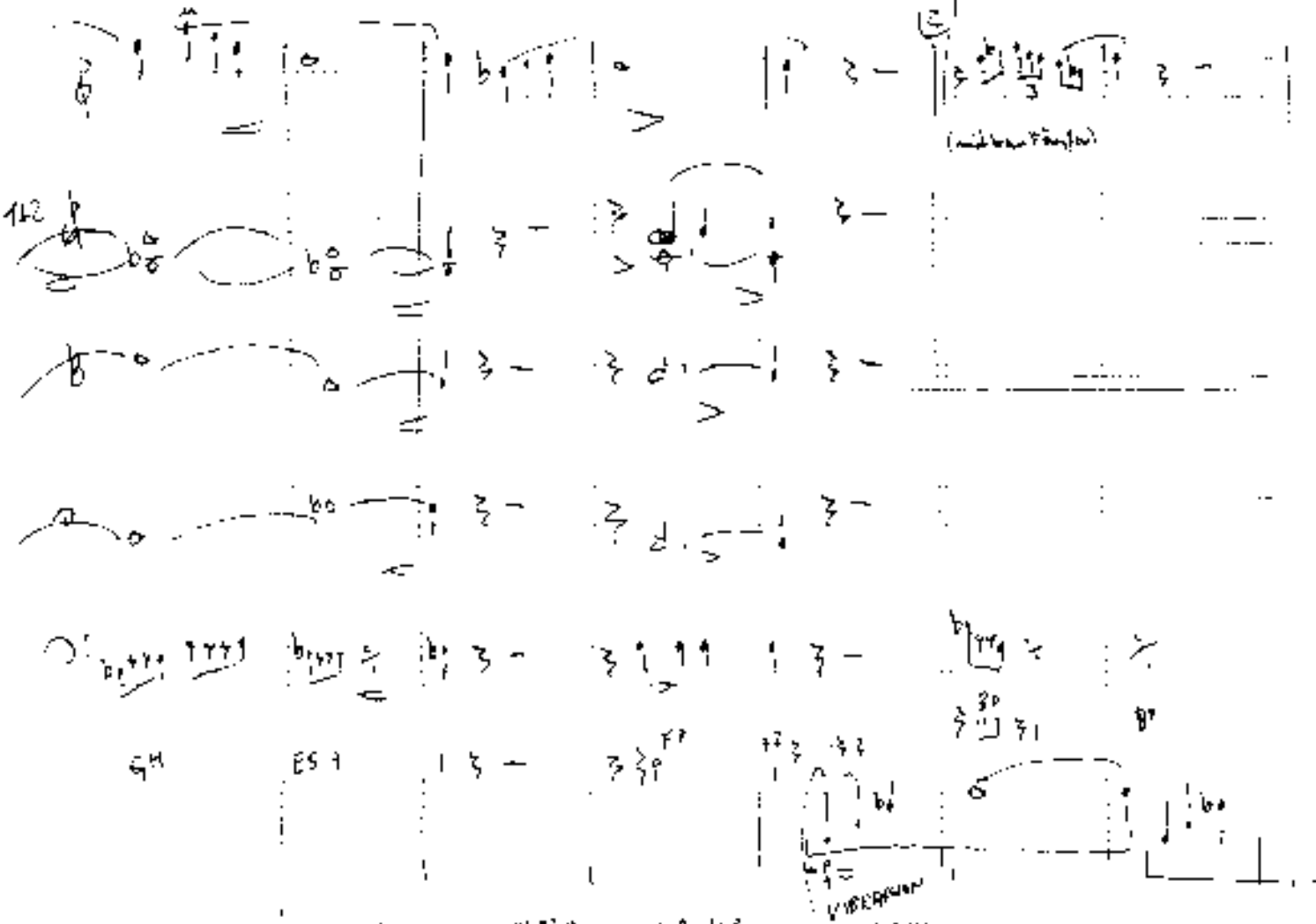
Schlagz.

E-Gitarre
VIBRAPHON
Klavier

1)



2)



Handwritten musical notation on a five-line staff, featuring a treble clef and a key signature of one flat. The notation includes eighth and sixteenth notes, some with slurs and accents, and rests. The piece is divided into four measures by vertical bar lines.

A blank five-line musical staff with a treble clef, intended for a second part of the composition.

A blank five-line musical staff with a bass clef, intended for a third part of the composition.

A blank five-line musical staff with a soprano clef (C1), intended for a fourth part of the composition.

Handwritten musical notation on a five-line staff with a soprano clef, featuring eighth and sixteenth notes with slurs and accents.

Handwritten musical notation on a five-line staff with a soprano clef, including notes labeled with letters C6, F6, F6, F6, B6, and B6. The notation includes slurs and accents.

Handwritten musical notation on a five-line staff with a treble clef, continuing the piece with eighth and sixteenth notes, slurs, and accents. A circled number '3' is written at the end of the staff.

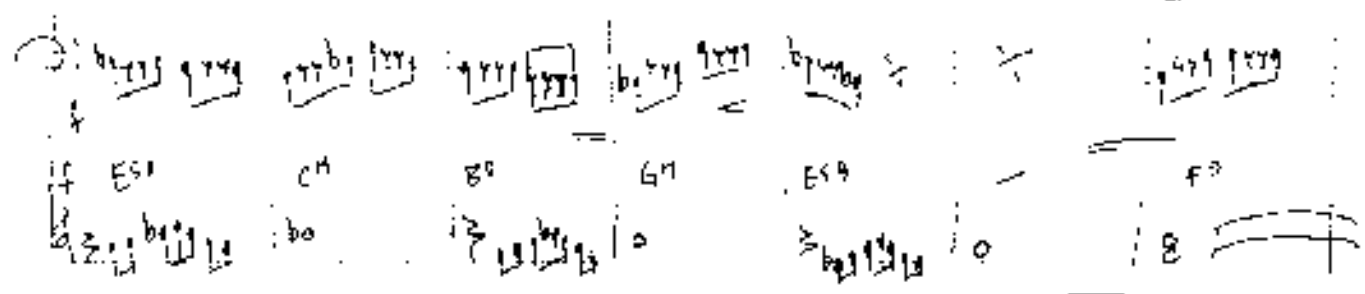
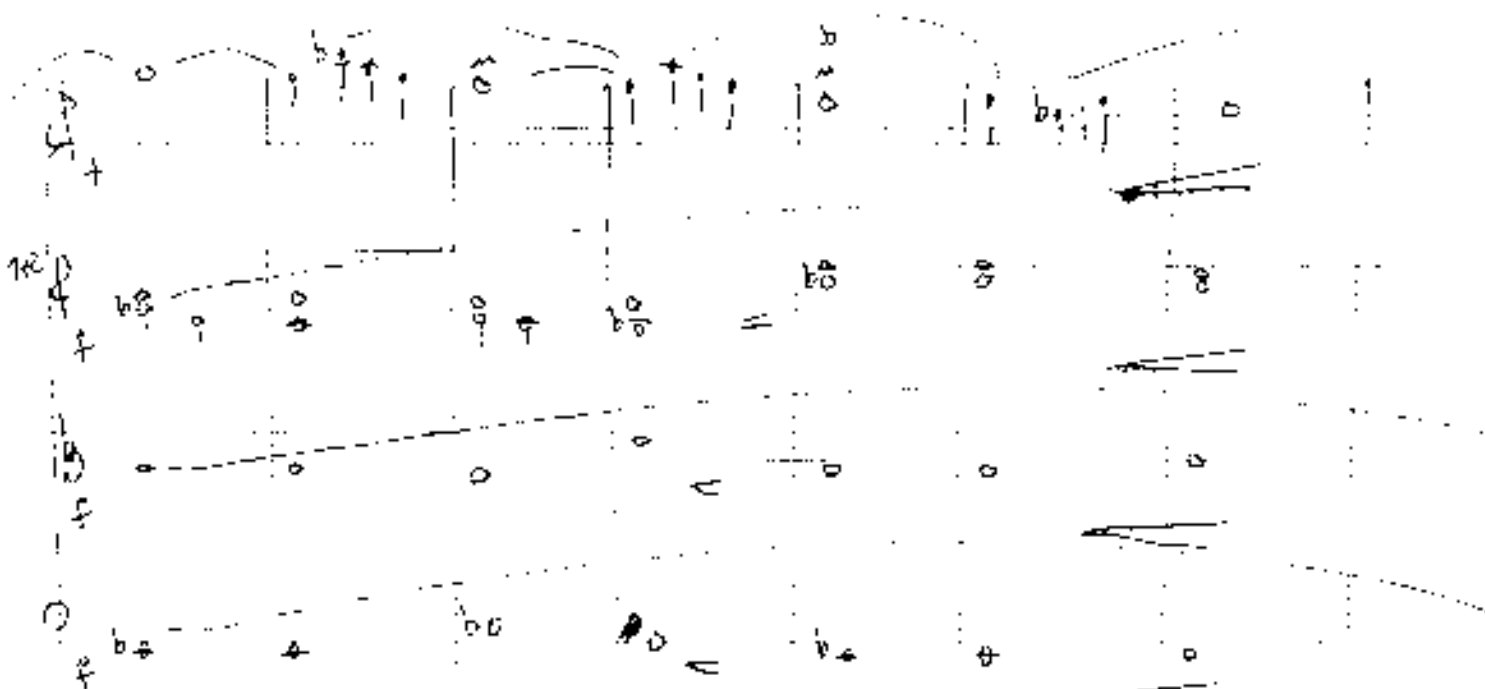
A blank five-line musical staff with a treble clef, intended for a second part of the composition.

A blank five-line musical staff with a bass clef, intended for a third part of the composition.

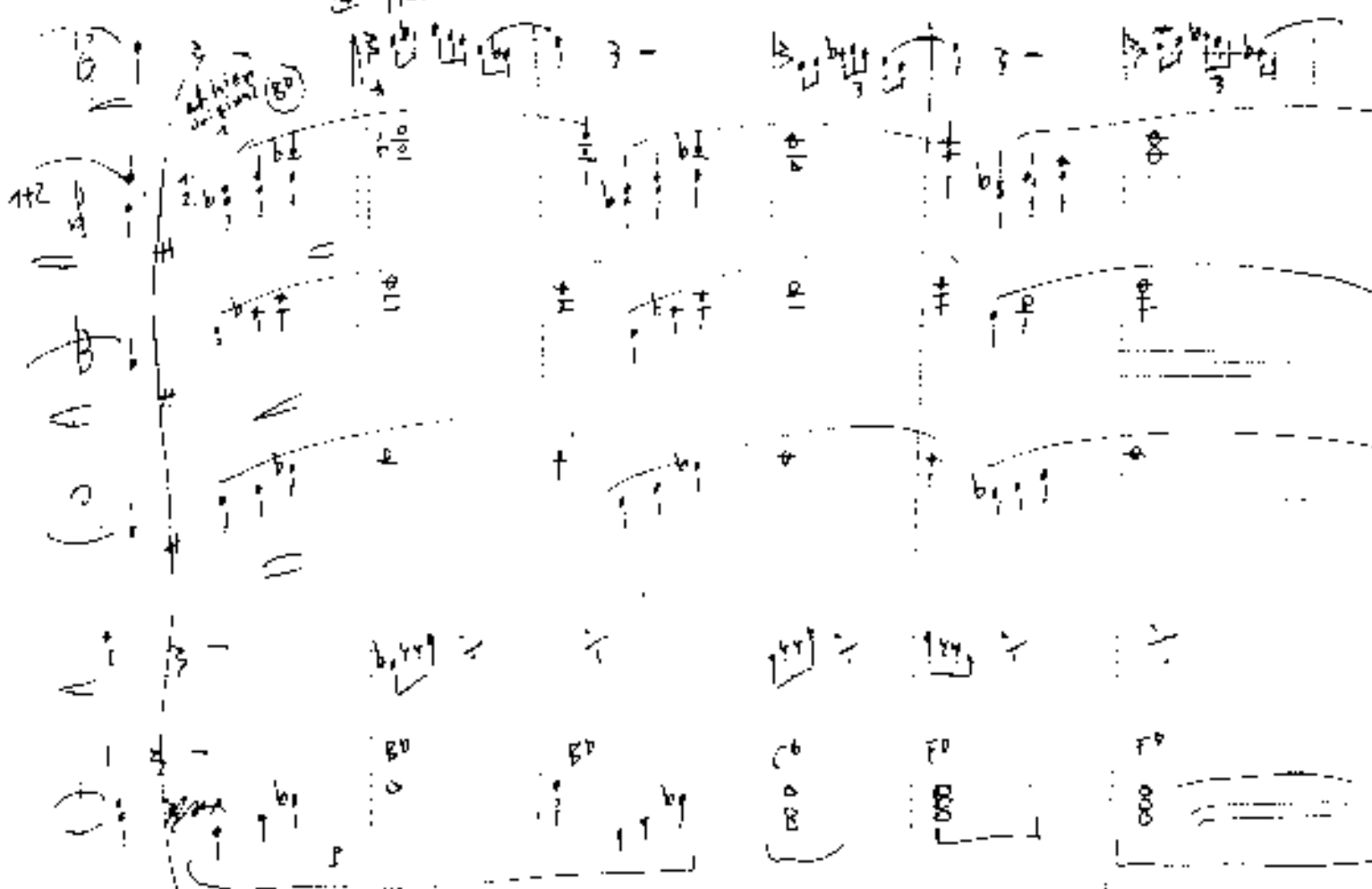
A blank five-line musical staff with a soprano clef, intended for a fourth part of the composition.

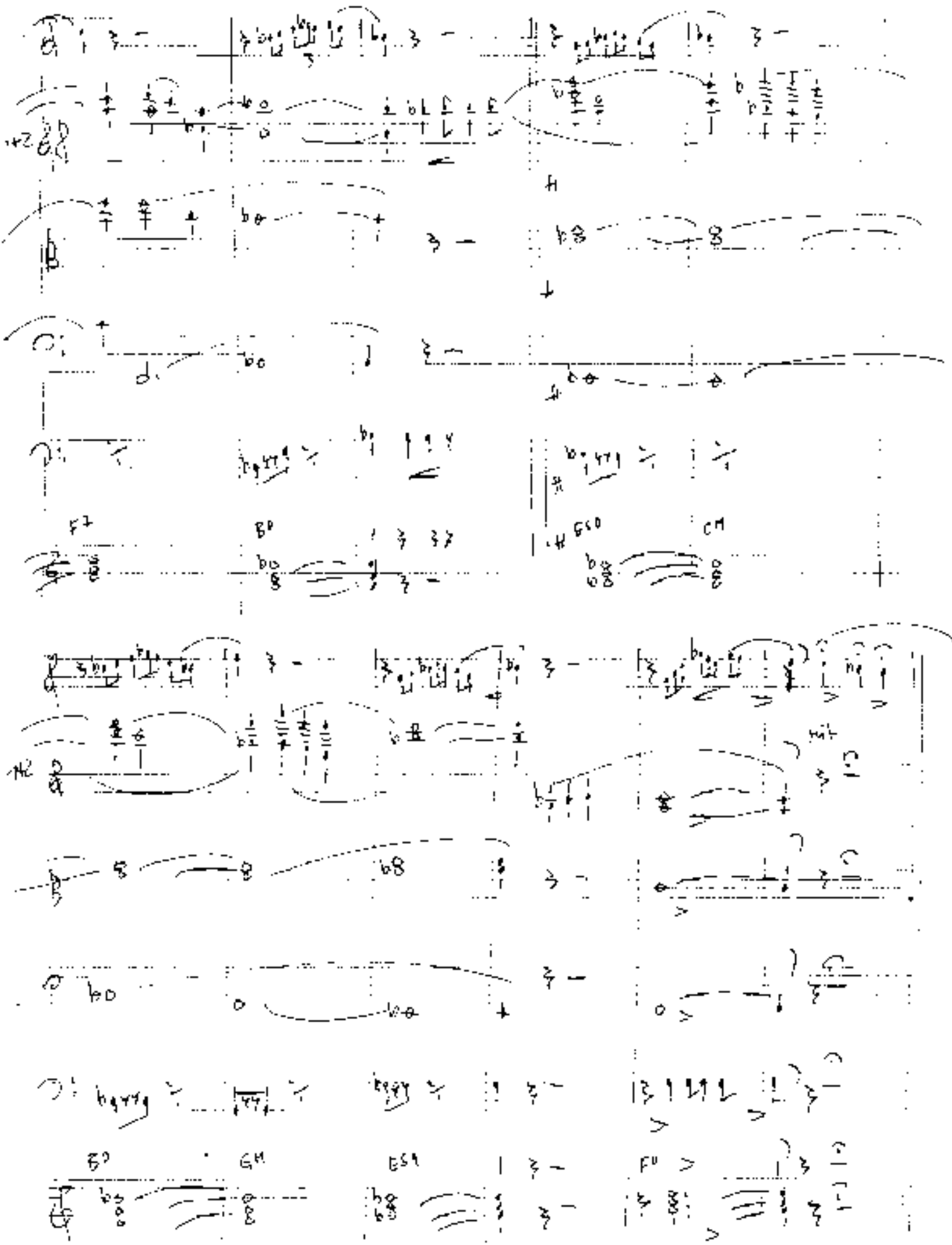
Handwritten musical notation on a five-line staff with a soprano clef, featuring eighth and sixteenth notes with slurs and accents.

Handwritten musical notation on a five-line staff with a soprano clef, including notes labeled with letters B6, C6, F6, F6, F6, and B6. The notation includes slurs and accents.



offen





Handwritten musical score on a five-line staff. The notation includes various notes, rests, and dynamic markings. Key elements include:

- Staff:** A five-line musical staff with a treble clef.
- Notes and Rhythms:** Includes quarter notes, eighth notes, and rests. Some notes have slurs or accents above them.
- Dynamic Markings:** *ppp* (pianissimo) is written multiple times. *ad. c. b.* (ad libitum) is written in a circled note at the top right.
- Performance Instructions:**
 - "Länge halten" (hold length) is written near a note.
 - "gr. mit + stiem" (grace note with stem) is written below a note.
 - "FIN" is written in a box at the end of the staff.
- Diagrammatic Elements:**
 - A circled note at the top right contains the text "ad. c. b. / klein / kadenz / solo / scarp.".
 - A box at the bottom right contains a diagram of a piano keyboard with a finger number "1" and the marking "ppp".
 - Vertical dashed lines separate the score into measures.