

Notenheft

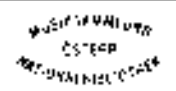
Handwritten musical notation on ten sets of five-line staves. The notation is mostly illegible due to blurring and low resolution.

2. Die Instrumentierung

JEDES INSTRUMENT EIN EIGENES MIKROPHON (Verstärkeranlage)

ff-leichen für die Stärke des (Haltmikrophons)

Handwritten musical notation on seven sets of five-line staves. The notation is mostly illegible due to blurring and low resolution.



Handwritten musical score for measures 8 and 9. The score consists of four staves. Measure 8 is marked with *mf* and contains a melodic line in the first staff and a bass line in the second. Measure 9 is marked with *arco* and *mf*, featuring a melodic line in the first staff and a bass line in the second. The third and fourth staves contain accompaniment for both measures.

Handwritten musical score for measures 10, 11, 12, 13, and 14. The score consists of four staves. Measure 10 is marked with *f* and contains a melodic line in the first staff and a bass line in the second. Measures 11, 12, 13, and 14 are marked with *f* and contain melodic lines in the first staff and bass lines in the second. The third and fourth staves contain accompaniment for all measures.

Two sets of empty musical staves, each consisting of five lines.

Handwritten musical score for measures 15-16. The score is written on five staves. Measure 15 is marked with a '15' and a key signature change to one sharp (F#). Measure 16 is marked with a '16' and a key signature change to two sharps (F# and C#). A large handwritten '6' and '8' are written vertically between the second and third staves. The notation includes various notes, rests, and dynamic markings such as 'p' and 'pp'.

Handwritten musical score for measures 18-22. The score is written on five staves. Measure 18 is marked with a '18'. Measures 19, 20, 21, and 22 are marked with '19', '20', '21', and '22' respectively. The notation includes various notes, rests, and dynamic markings such as 'p' and 'pp'. A thick black horizontal bar is drawn across the bottom of the page, partially obscuring the lower staves.

Empty musical staves at the bottom of the page, consisting of five blank staves.

Chess

23 Tempo 1.
1. Altimillion Stupere 24 25 26

Handwritten musical score for measures 23-26. The score is written on four staves. The first staff has a treble clef and contains notes with stems and beams. The second staff has a treble clef and contains notes with stems and beams. The third staff has a bass clef and contains notes with stems and beams. The fourth staff has a bass clef and contains notes with stems and beams. The score includes dynamic markings such as *ppp* and *f*. There are also some handwritten annotations and a large bracket on the left side of the first two staves.

Handwritten musical score for measures 27-30. The score is written on four staves. The first staff has a treble clef and contains notes with stems and beams. The second staff has a treble clef and contains notes with stems and beams. The third staff has a bass clef and contains notes with stems and beams. The fourth staff has a bass clef and contains notes with stems and beams. The score includes dynamic markings such as *f* and *f*. There are also some handwritten annotations and a large bracket on the left side of the first two staves.

Handwritten musical score for measures 31-32. The score consists of four staves. Measure 31 features a treble clef with a sharp sign (F#) and a bass clef with a sharp sign (F#). Measure 32 features a treble clef with a sharp sign (F#) and a bass clef with a sharp sign (F#). The notation includes various notes, rests, and accidentals.

Handwritten musical score for measures 33-35. The score consists of four staves. Measure 33 features a treble clef with a sharp sign (F#) and a bass clef with a sharp sign (F#). Measure 34 features a treble clef with a sharp sign (F#) and a bass clef with a sharp sign (F#). Measure 35 features a treble clef with a sharp sign (F#) and a bass clef with a sharp sign (F#). The notation includes various notes, rests, and accidentals.

44

graves rit - dim.....

45

46

47

8
Foll

Handwritten musical score for three staves. The first staff has a treble clef and a common time signature. It contains notes with dynamic markings 'p', 'f >', and 'pp'. The second staff has a bass clef and contains notes with dynamic markings 'ff' and 'pp'. The third staff has a bass clef and contains notes with dynamic markings 'ff' and 'pp'. There are also some handwritten annotations like '44', '45', '46', '47' and '8 Foll'.

Teil 2.

48 *ritard*

49

Handwritten musical score for measures 48 and 49. The score is written on four staves. Measure 48 is marked with a large '4' and 'ff' (fortissimo) dynamic. Measure 49 is marked with a large '4' and 'ff' dynamic. The notation includes various note values, rests, and dynamic markings such as 'ritard' (ritardando) and 'ff'.

50

51

52

Handwritten musical score for measures 50, 51, and 52. The score is written on four staves. Measure 50 is marked with a large '4' and 'f' (forte) dynamic. Measure 51 is marked with a large '4' and 'f' dynamic. Measure 52 is marked with a large '4' and 'p' (piano) dynamic. The notation includes various note values, rests, and dynamic markings such as 'f' and 'p'.

53

52

57

58

59

^

60

^

61

^

62

63

press. mit - dim.

64 65 66

67 68 69 70

cello playing

Handwritten musical score for measures 71-74. The score consists of five staves. Measure 71 shows a piano (p) dynamic. Measure 72 features a piano-piano (pp) dynamic and includes a circled 'p' in the bass staff. Measure 73 has a piano (p) dynamic. Measure 74 includes a piano (p) dynamic and a circled 'p' in the bass staff. The notation includes various notes, rests, and dynamic markings.

Handwritten musical score for measures 75-78. The score consists of five staves. Measure 75 has a piano (p) dynamic. Measure 76 features a piano-piano (pp) dynamic and includes a circled 'p' in the bass staff. Measure 77 has a piano (p) dynamic and includes a circled 'p' in the bass staff. Measure 78 includes a piano (p) dynamic and a circled 'p' in the bass staff. The notation includes various notes, rests, and dynamic markings.

80

81

81

82

$\hat{g} \#$

Handwritten musical score for measures 80-82. The notation includes notes with accidentals (sharps and naturals), dynamics (f), and slurs. The staves are connected by a brace on the left side.

sehr leicht

83

84

85

Handwritten musical score for measures 83-85. The notation includes notes with accidentals (sharps and naturals), dynamics (ff), and slurs. The staves are connected by a brace on the left side. There are large '8' symbols between measures 84 and 85, possibly indicating a repeat or a specific performance instruction.

f1

f2

f3

Handwritten musical score for measures f1, f2, and f3. The score is written on four staves. The top staff uses a treble clef and a key signature of one sharp (F#). The second staff uses a bass clef. The third and fourth staves use treble clefs. The notation includes quarter notes, eighth notes, and rests, with various accidentals and slurs.

f4

f5

f6

Handwritten musical score for measures f4, f5, and f6. The score is written on four staves. The top staff uses a treble clef and a key signature of two sharps (F# and C#). The second staff uses a bass clef. The third and fourth staves use treble clefs. The notation includes quarter notes, eighth notes, and rests, with various accidentals and slurs. A "truss" marking is present in the fourth staff of measure f6.

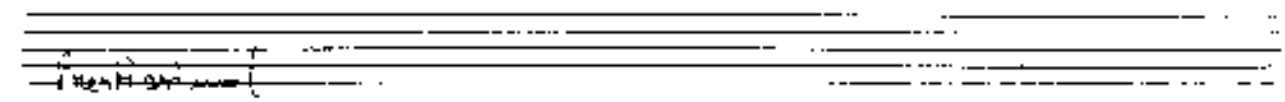
truss

Handwritten musical score for measures 97 and 98. The score consists of five staves. Measure 97 shows a complex chordal structure with various notes and accidentals. Measure 98 continues the piece with similar complexity. Annotations include 'fff', 'pizz', and 'arco'.

Handwritten musical score for measures 99, 100, and 101. The score consists of five staves. Measure 99 shows a complex chordal structure. Measure 100 and 101 continue the piece with similar complexity. Annotations include 'pizz' and 'arco'.

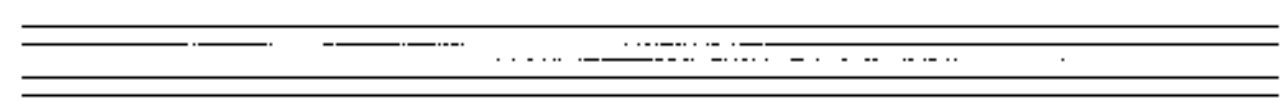
Handwritten musical score for measures 102 and 103. The score is written on three staves. Measure 102 includes a treble clef, a key signature of one sharp (F#), and a common time signature. It features a series of chords and notes, with a dynamic marking of *pizz* (pizzicato) and a *arco* (arco) marking. Measure 103 continues the musical progression with similar notation. The score is enclosed in a large bracket on the left side.

Handwritten musical score for measures 104, 105, and 106. The score is written on three staves. Measure 104 includes a treble clef, a key signature of one sharp (F#), and a common time signature. It features a series of chords and notes, with a dynamic marking of *pizz* (pizzicato). Measure 105 includes a dynamic marking of *accelerando* (accelerando). Measure 106 continues the musical progression. The score is enclosed in a large bracket on the left side.

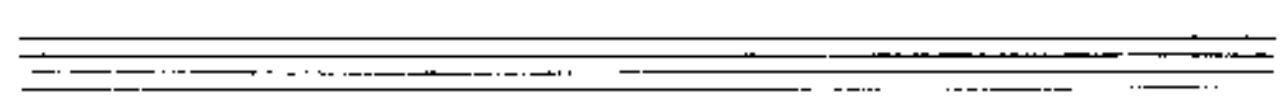


107 108

arco



109 110



111

112

113

10

rit + dim

114

115

116

4
4

arco

rit. marking (♩)

117

118

119

Handwritten musical score for measures 117-119. The score consists of five staves. The first three staves are for strings (Violin I, Violin II, and Viola), and the fourth and fifth are for the Cello/Double Bass. Measure 117 features a whole note chord in the strings and a half note in the Cello/Double Bass. Measure 118 shows a half note in the strings and a quarter note in the Cello/Double Bass. Measure 119 contains a half note in the strings and a quarter note in the Cello/Double Bass. Dynamics include *pp* and *ppp*. There are various markings such as accents (^), slurs, and hairpins ($\langle \rangle$).

120

121

CON
SURD. 122

Handwritten musical score for measures 120-122. The score consists of five staves. Measure 120 shows a whole note chord in the strings and a half note in the Cello/Double Bass. Measure 121 features a half note in the strings and a quarter note in the Cello/Double Bass. Measure 122 contains a half note in the strings and a quarter note in the Cello/Double Bass. Dynamics include *mf*, *f*, and *p*. There are various markings such as accents (^), slurs, and hairpins ($\langle \rangle$).

Handwritten musical score for measures 123-126. The score consists of four staves. Measure numbers 123, 124, 125, and 126 are written above the staves. The first staff has a treble clef and a key signature of one sharp (F#). The second and third staves have a bass clef. The fourth staff has a treble clef. Dynamics include *pp*, *f > pp*, and *p > pp*. There are various musical notations such as notes, rests, and slurs. A thick black bar is drawn across the bottom of this section.

Handwritten musical score for measure 127. The score consists of four staves. Measure number 127 is written above the first staff. The first staff has a treble clef and a key signature of one sharp (F#). The second and third staves have a bass clef. The fourth staff has a treble clef. Dynamics include *ppp* and *pppp*. The text "Cant. Solo." is written in the first three staves. There are various musical notations such as notes, rests, and slurs. A thick black bar is drawn across the bottom of this section.

Teil 3.

128 *frei (rubato)*

ritardando

129 *brist*

5

4

134 *frei*

Steigern

135 *frei*

Sec. PAUSE

138 139 140 Lento 141 142

pp. rit. dim

CON SORD. (p) > > pp 2200

143 144 145

sempre crescendo = III

p133 pp

p133 pp

p133 pp

p133 pp =

ab hier wird über große Zusatzlautsprecher (ein Tonband abgespielt) allmählich von pp — bis Takt 159) fff eingblendet. (Takt 143-145 | Takt 146-148) (Takt 149-151) (Takt 152-154) gemeins. (mindestens fff wiederholen)

Als Tonband = Takt 23-30 mit großer Bandgeschwindigkeit aufgenommen | aber mit kleiner (langsamer) Geschwindigkeit abgespielt

Das Tonband wird auch von pp-fff abgespielt.

Beispiel (143-145) (14)

25

Handwritten musical score for measures 146-148. The score consists of four staves. A large brace spans across the top of the first three staves. Measure numbers 146, 147, and 148 are written above the first staff. The notation includes various rhythmic values, accidentals (sharps, flats, naturals), and slurs. A thick black redaction bar is located below the fourth staff.

Handwritten musical score for measures 149-151. The score consists of four staves. A large brace spans across the top of the first three staves. Measure numbers 149, 150, and 151 are written above the first staff. The notation includes various rhythmic values, accidentals (sharps, flats, naturals), and slurs. A thick black redaction bar is located below the fourth staff.

Handwritten musical score for measures 152-154. The score consists of four staves. Measure numbers 152, 153, and 154 are written above the first staff. The notation includes various notes, rests, and dynamic markings such as $f =$ and $\hat{}$. There are also some handwritten annotations like \uparrow and \downarrow above notes.

Handwritten musical score for measures 155-159. The score consists of four staves. Measure numbers 155, 156, 157, 158, and 159 are written above the first staff. The notation includes notes, rests, and dynamic markings such as $f =$ and $\hat{}$. There are also some handwritten annotations like \uparrow and \downarrow above notes. The word "abbrechen" is written at the end of the first staff. There are also some handwritten annotations like "10 Sec." above measures 156, 157, 158, and 159.

nun
 halt
 klinge
 weiter
 bis
 Töne
 ver-
 klumpen.
 Dann
 weiter
 spielen

(Fortschritt
 (wenn man mehr
 halt ist -
 nicht mehr))

brato (D)

(frei - robata)

Handwritten musical score for measures 160-161. The score consists of five staves. The first staff is a vocal line with lyrics. The second and third staves are for a piano accompaniment, with the second staff containing a 3/4 time signature and the third a 4/4 time signature. The fourth and fifth staves are for a second piano accompaniment. The music includes various notes, rests, and dynamic markings such as *pp*, *p*, and *f*. There are also some handwritten annotations and symbols like triangles and circles.

Handwritten musical score for measures 162-164. The score consists of four staves. The first three staves are for a piano accompaniment, with the first staff containing a 3/4 time signature and the second a 4/4 time signature. The fourth staff is a vocal line with lyrics. The music includes various notes, rests, and dynamic markings such as *pp*, *p*, and *f*. There are also some handwritten annotations and symbols like triangles and circles.

reclij ausklingen -

Handwritten musical score for the first system, measures 165-168. The score is written on four staves. The first staff (treble clef) contains a melodic line with a dynamic marking of *pp* and a tempo marking of "Sehr langsam (f)". The second staff (treble clef) contains a melodic line with a dynamic marking of *pp*. The third staff (treble clef) contains a melodic line with a dynamic marking of *pp*. The fourth staff (bass clef) contains a bass line with a dynamic marking of *pp*. The measures are numbered 165, 166, 167, and 168. The music concludes with a fermata and a final chord.

Handwritten musical score for the second system, measures 169-172. The score is written on four staves. The first staff (treble clef) contains a melodic line with a dynamic marking of *pp* and a tempo marking of "Sehr langsam (f)". The second staff (treble clef) contains a melodic line with a dynamic marking of *pp*. The third staff (treble clef) contains a melodic line with a dynamic marking of *pp*. The fourth staff (bass clef) contains a bass line with a dynamic marking of *pp*. The measures are numbered 169, 170, 171, and 172. The music concludes with a fermata and a final chord. A box labeled "FINE" is written in the upper right corner of the system.