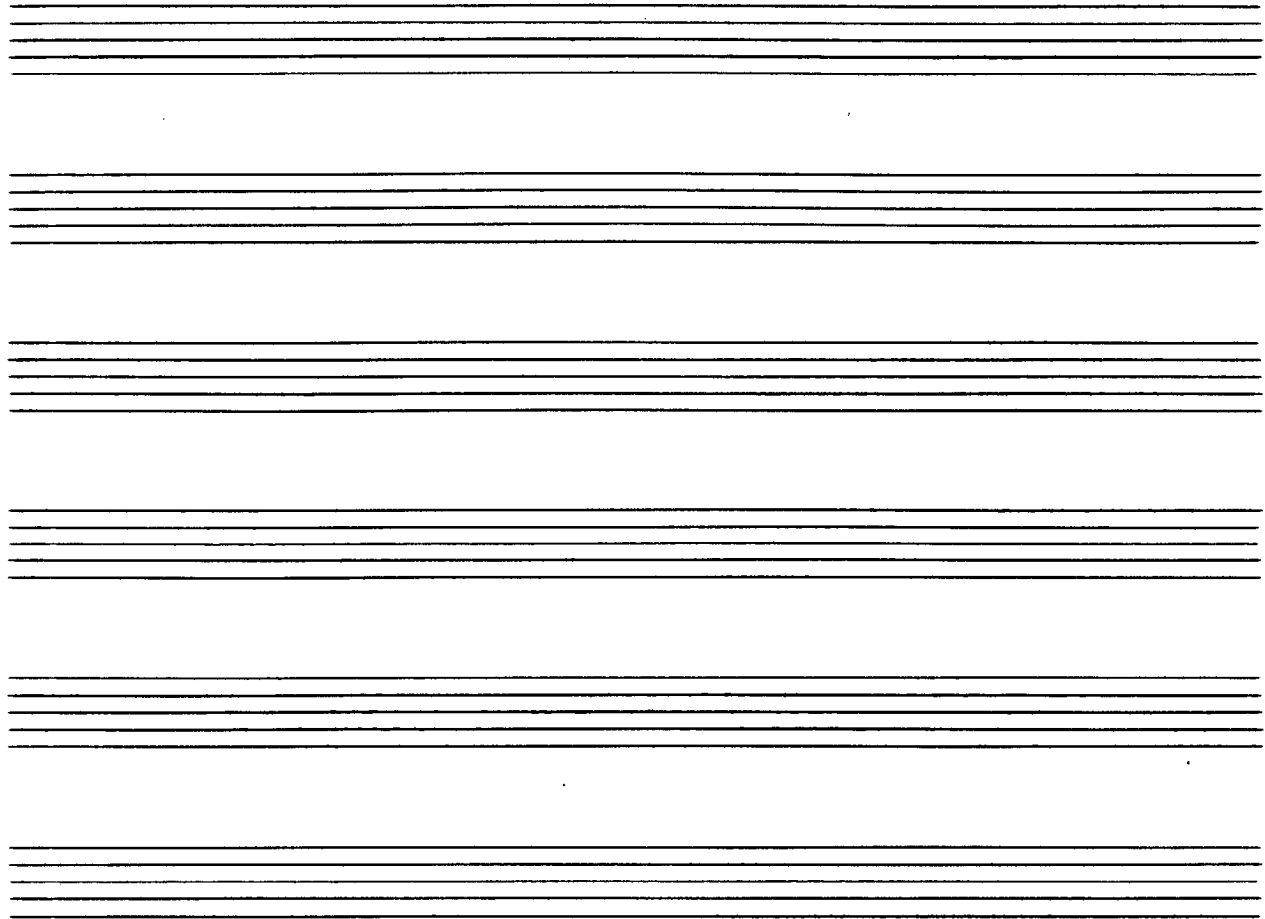


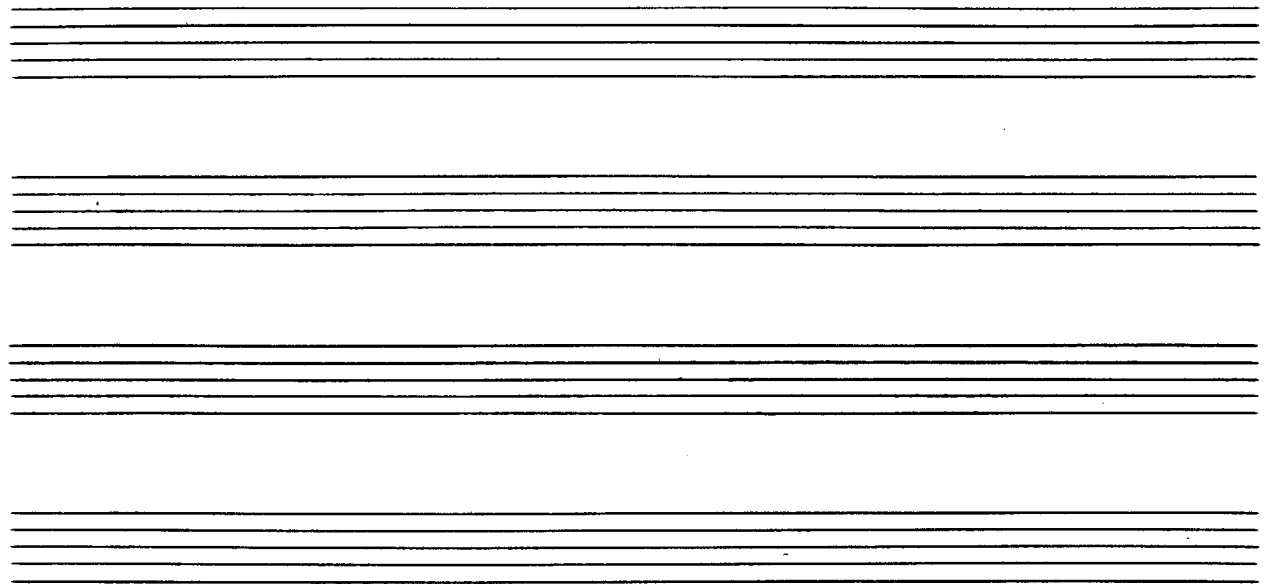
**Notenheft**



3 Teile f. Streichquartett

JEDES INSTRUMENT EIN EIGENES MIKROPHON (Verstärkeranlage)

■ (Zeichen für die Stärke des (Hallmikrophons)



# Teil 1.

JEDES INSTRUMENT EIN EIGENES MIKROPHON  
MIT VERSTÄRKERANLAGE.

*Schn langsam* 1 *con sord.* 2 3 4

**VIOLINE 1**  
= 44 44 44 fpp

**VIOLINE 2**  
*con sord.* 44 44 #9 mf *con sord.* #9 fpp

**VIOLA**  
mf *con sord.* #9 fpp

**CELLO**  
*con sord.* pp #9 fpp

5 6 7

**VIOLINE 1**  
pp

**VIOLINE 2**  
pp

**VIOLA**  
pp

**CELLO**  
pp arco #9 #9 #9 mf

Handwritten musical score for measures 8 and 9. The score consists of five staves. The first four staves are grouped with a brace on the left. Measure 8 is marked with a 'b' and 'e' above a slur, and contains dynamics 'mf' and 'f'. Measure 9 is marked 'arco' and contains dynamics 'f' and 'mf'. The fifth staff has a treble clef and contains a melodic line with dynamics 'mf' and 'f'.

Handwritten musical score for measures 10, 11, 12, 13, and 14. The score consists of five staves. Measures 10-14 are marked with measure numbers 10, 11, 12, 13, and 14. The first four staves are grouped with a brace on the left. Measure 10 contains dynamics 'f' and 'f'. Measure 11 contains dynamics 'f' and 'f'. Measure 12 contains dynamics 'f' and 'f'. Measure 13 contains dynamics 'f' and 'f'. Measure 14 contains dynamics 'f' and 'f'. The fifth staff has a treble clef and contains a melodic line with dynamics 'f' and 'f'.

Handwritten musical score for measures 15 and 16. The score is written on five staves. Measure 15 shows a treble clef with a key signature of one flat (B-flat) and a common time signature. The bass clef part has a key signature of one sharp (F-sharp) and a common time signature. Measure 16 continues the piece with a treble clef, a key signature of one sharp (F-sharp), and a common time signature. There are various musical notations including notes, rests, and dynamic markings like 'f' and 'p'.

Handwritten musical score for measures 17 through 22. The score is written on five staves. Measure 17 shows a treble clef with a key signature of one sharp (F-sharp) and a common time signature. The bass clef part has a key signature of one flat (B-flat) and a common time signature. Measures 18-22 continue the piece with a treble clef, a key signature of one sharp (F-sharp), and a common time signature. There are various musical notations including notes, rests, and dynamic markings like 'f', 'p', and 'pp'.

Empty musical staves for the bottom section of the page.

23

Tempo 1.  
allmählich steigern.

24

25

26

Chesc

27

28

29

30

Handwritten musical score for measures 31 and 32. The score is written on four staves (treble and bass clefs for both hands). Measure 31 features a series of chords and melodic fragments with accents (^) and dynamic markings (ff). Measure 32 continues with similar harmonic and melodic material, including a key signature change to one sharp (F#) and further dynamic markings.

Handwritten musical score for measures 33, 34, and 35. Measure 33 begins with a *rit.* (ritardando) marking. Measure 34 continues the melodic and harmonic development. Measure 35 features a melodic line with a slur and a *rit...* marking, indicating a further deceleration. The score includes various dynamic markings such as *fff* and *ff*.

36 mit ... 37 38 39

Handwritten musical score for measures 36-39. Measure 36 has a 'mit ...' marking. Measures 37-39 contain complex piano and violin parts with dynamic markings like 'ff', 'f', and 'p', and various articulation symbols like accents and slurs.

40 mit ... dünn ... 41 42 # 43

Handwritten musical score for measures 40-43. Measure 40 has a 'mit ... dünn ...' marking. Measures 41-43 contain complex piano and violin parts with dynamic markings like 'pp', 'ppp', 'ffp', and 'ff', and various articulation symbols like accents and slurs.



44

großes mit - dünn.....

45

46

47

G 10/11

# Teil 2.

48 *zuerst* 49

50 51 52

53

54

55

*fp* *ff* *f*

*p133 arno* *ff* *f*

56

57

58

*ff*

*p133 arno* *ff* *ff* *ff*

*p133 arno* *p133 arno* *p133 arno*

59

^

60

^

61

^

pizz arco      pizz arco      pizz arco

62

63

pizz arco      pizz arco

erw. rit - dim

64 65 66

sehr ruhig

67 68 69 70

Handwritten musical score for measures 71-74. The score is written on four staves. Measure 71 shows a dynamic marking of *f* and a circled *p*. Measure 72 features a dynamic marking of *pp* and a circled *p*. Measure 73 includes a dynamic marking of *pp* and a circled *p*. Measure 74 shows a dynamic marking of *f* and a circled *p*. The notation includes various notes, rests, and dynamic markings.

Handwritten musical score for measures 75-78. The score is written on four staves. Measure 75 shows a dynamic marking of *f* and a circled *p*. Measure 76 features a dynamic marking of *ppp* and a circled *p*. Measure 77 includes a dynamic marking of *pp* and a circled *p*. Measure 78 shows a dynamic marking of *f* and a circled *p*. The notation includes various notes, rests, and dynamic markings.

Handwritten musical score for measures 79-82. The score is written on five staves. Measure numbers 79, 80, 81, and 82 are indicated above the staves. The notation includes various notes, rests, and dynamic markings such as  $f$  and  $f=$ . There are also some handwritten annotations like  $\hat{g}$  and  $\hat{g}^{\wedge}$ .

Handwritten musical score for measures 83-85. The score is written on five staves. Measure numbers 83, 84, and 85 are indicated above the staves. The notation includes various notes, rests, and dynamic markings such as  $f$  and  $f=$ . There are also some handwritten annotations like  $\hat{g}$  and  $\hat{g}^{\wedge}$ . The word "sehr breit" is written above the staves. There are some large handwritten numbers like 8 and 8 in the score.

rit. .... dim. ....

86

87

88

$\# \underline{\underline{E}}$

ritacca

Handwritten musical score for measures 86-88. The score is written on four staves (treble and bass clefs). Measure 86 features a treble clef with a sharp sign and a bass clef with a sharp sign. Measure 87 features a treble clef with a sharp sign and a bass clef with a flat sign. Measure 88 features a treble clef with a sharp sign and a bass clef with a flat sign. The score includes various dynamics such as *pp*, *ppp*, and *f*, and includes accents and slurs. A thick black bar is drawn across the bottom of the system.

rit. cresc.

89

90

Handwritten musical score for measures 89-90. The score is written on four staves (treble and bass clefs). Measure 89 features a treble clef with a sharp sign and a bass clef with a flat sign. Measure 90 features a treble clef with a sharp sign and a bass clef with a flat sign. The score includes various dynamics such as *fff* and *ppp*, and includes accents and slurs.



91

92

93

94

95

96

Handwritten musical score for measures 97 and 98. The score is written on five staves. The top staff shows a melodic line with notes and rests. The second staff has a treble clef and contains notes with dynamics like "fff" and "pizz". The third and fourth staves have bass clefs and contain notes with dynamics like "pizz" and "arco". The bottom staff has a bass clef and contains notes with dynamics like "fff" and "arco". Measure numbers 97 and 98 are clearly marked.

Handwritten musical score for measures 99, 100, and 101. The score is written on five staves. The top staff shows a melodic line with notes and rests. The second staff has a treble clef and contains notes with dynamics like "pizz" and "arco". The third and fourth staves have bass clefs and contain notes with dynamics like "pizz" and "arco". The bottom staff has a bass clef and contains notes with dynamics like "pizz" and "arco". Measure numbers 99, 100, and 101 are clearly marked.

Handwritten musical score for measures 102 and 103. The score is written on four staves. Measure 102 features a complex chord structure with a sharp sign above the first staff and a flat sign below the second staff. Measure 103 continues with similar chordal textures. The bottom staff includes the markings *pizz* and *arco*. A large bracket spans across both measures, and various dynamic and articulation markings are present throughout the system.

Handwritten musical score for measures 104, 105, and 106. The score is written on four staves. Measure 104 shows a sharp sign above the first staff. Measure 105 includes the marking *accel...*. Measure 106 features a sharp sign above the first staff. The bottom staff contains a melodic line with various articulation marks and the marking *pizz*. A large bracket spans across the three measures, and various dynamic and articulation markings are present throughout the system.

Prestissimo

107

108

109

110

111 112 113

P133

114 115 116

*rit + dim.*

arco

cello marking (♩)

117

118

119

120

121

CON SORDI 122

Handwritten musical score for measures 123, 124, 125, and 126. The score is written on four staves. Measure 123 includes a key signature change to one sharp (F#) and a dynamic marking of *p*. Measures 124, 125, and 126 feature dynamic markings of *pp* and *f > pp*. The notation includes various note values, rests, and slurs.

Handwritten musical score for measure 127. The score is written on four staves. Measure 127 includes a dynamic marking of *ppp* and the instruction *CON SORD.*. The notation includes various note values, rests, and slurs.

# Teil 3.

128 *frei (rubato)*

6 6

steigern

129 *breit*

5 8

130 131 132 133



134 *frei*

Handwritten musical score for measures 134-137. The top staff features a melodic line with sixteenth-note runs and slurs, marked with '6' and 'steigern'. The lower staves show a piano accompaniment with chords and some melodic fragments.

135 *breit*

Handwritten musical score for measures 135-137. Measure 135 is marked 'breit' and shows a wide interval in the upper voice. Measures 136 and 137 continue the melodic and harmonic development with various slurs and accents.

5 Sec. PAUSE

138

139

140

Lento 141

gr. rit... dim 142

CON SORD. (p) > > pp arco

**Prestissimo** pp

sempre crescendo = ffff

143

144

145

p133 pp =

ab hier wird über große Zusatzlautsprecher (ein Tonband abgespielt) allmählich von pp — bis Takt (159) ffff eingebledet. ( Takt 143-145) (Takt 146-148) (Takt 149-151) (Takt 152-154) jeweils (mindestens 7x wiederholen)

Als Tonband = Takt 23-30 mit großer Bandgeschwindigkeit

Beispiel (143-145) (21x)

Das Tonband - wird auch von pp - ffff abgespielt.

aufgenommen | aber mit kleiner (langsamer) Geschwindigkeit abgespielt

Adolf Scherbaum, o. G. (Schwerin, Mecklenburg-Vorpommern)  
© 2010 Inge Adami-Scherbaum. Alle Rechte vorbehalten.

146 147 148

Handwritten musical score for measures 146-148. The score is written on four staves. Measure 146 shows a series of notes with accents (^) and slurs. Measure 147 continues the pattern with similar notation. Measure 148 concludes the phrase with a final note and an accent (^). There are some handwritten annotations and a large blacked-out area below the staves.

149 150 151

Handwritten musical score for measures 149-151. The score is written on four staves. Measure 149 begins with a dynamic marking  $mf =$  and features notes with accents (^) and slurs. Measure 150 continues the musical phrase. Measure 151 concludes with a final note and an accent (^). There are some handwritten annotations and a large blacked-out area below the staves.

152 153 154



155 156 157 158 159

10 Sec. 10 Sec. 10 Sec. 10 Sec.

abbrachen

nur  
Hall  
klingt  
weiter  
—  
bis  
Töne  
ver-  
klingen.  
—  
Dann  
weiter  
spielen



(Tonband  
wenn nur mehr  
Hall ist -  
weiter spielen)

breite (♩)

[frei - rubato] →

Handwritten musical score for measures 160 and 161. The score is written on five staves. Measure 160 features a complex rhythmic pattern with notes and rests, including a 3/4 time signature. Measure 161 shows a continuation of the pattern with some notes marked with accents and dynamic markings like *ppp*. The notation includes various accidentals (sharps, flats) and slurs.

Handwritten musical score for measures 162, 163, and 164. Measures 162 and 163 are mostly rests with some notes in the lower staves. Measure 164 contains a vocal line with lyrics: "mit - din", "Lunga", and "pp > ppp". The score includes dynamic markings such as *p*, *pp*, and *ppp*, and a fermata over the final note. The notation includes various accidentals and slurs.

ruhig ausklingen -

165

166

167

pp

Sehr langsam (r)

pp

pp

pp

168

169

170

8

FINE

ppp

ppmp

ppp

ppmp

ppp

ppmp

ppp

ppmp