

Notenheft

Allievo

Handwritten musical score for the first system. The treble clef part is in B-flat major and 4/4 time. It begins with a piano (p) dynamic marking and a triplet of eighth notes. The bass clef part consists of a series of chords, some with plus signs (+) above them, indicating specific voicings or fingerings.

Handwritten musical score for the second system. The treble clef part continues with a melodic line, featuring a forte (f) dynamic marking. The bass clef part continues with chords and some rhythmic patterns.

Handwritten musical score for the third system. The treble clef part concludes with a melodic phrase. The bass clef part features chords and rhythmic patterns, ending with a final cadence.

Handwritten musical score for the first system, featuring three staves with treble, alto, and bass clefs. The music includes notes, rests, and dynamic markings such as 'p' and 'V'.

Handwritten musical score for the second system, featuring three staves with treble, alto, and bass clefs. The music includes notes, rests, and dynamic markings such as 'f' and 'V'.

Handwritten musical score for the third system, featuring three staves with treble, alto, and bass clefs. The music includes notes, rests, and dynamic markings such as 'V'.

Handwritten musical score for the first system. The top staff is for the violin, starting with a treble clef and a key signature of one flat (Bb). The bottom two staves are for the piano, with a grand staff (treble and bass clefs) and a key signature of one flat. The music consists of several measures with various notes, rests, and slurs. A dynamic marking 'f' is present in the first measure of the piano part.

Handwritten musical score for the second system. The top staff is for the violin, and the bottom two staves are for the piano. The music continues with more complex rhythmic patterns and slurs. There are some markings above the notes, possibly indicating accents or breath marks.

Handwritten musical score for the third system. The top staff is for the violin, and the bottom two staves are for the piano. The music concludes with several measures, including some slurs and dynamic markings.

Handwritten musical score for the first system. It consists of three staves: Violin (top), Violoncello (middle), and Piano (bottom). The key signature is B-flat major. The Violin part begins with a melodic line of quarter notes, followed by a more complex passage with slurs and ties. The Violoncello part provides harmonic support with chords and some melodic fragments. The Piano part features a rhythmic accompaniment with eighth notes and rests.

Handwritten musical score for the second system. It consists of three staves: Violin (top), Violoncello (middle), and Piano (bottom). The Violin part has a melodic line with a dynamic marking of *f* and a slur. The Violoncello part has a melodic line with a dynamic marking of *f* and a slur. The Piano part has a rhythmic accompaniment with eighth notes and rests.

Handwritten musical score for the third system. It consists of three staves: Violin (top), Violoncello (middle), and Piano (bottom). The Violin part has a melodic line with a dynamic marking of *f* and a slur. The Violoncello part has a melodic line with a dynamic marking of *f* and a slur. The Piano part has a rhythmic accompaniment with eighth notes and rests.

Handwritten musical score for the first system. The treble clef staff contains a melodic line with a key signature of two flats and a common time signature. The right hand features a series of notes with slurs and accents, including a prominent note with an accent mark. The left hand provides harmonic support with chords and single notes.

Handwritten musical score for the second system. The treble clef staff continues the melodic line with a slur and the word "dwi" written below it. The left hand continues with chords and single notes.

Handwritten musical score for the third system. The treble clef staff concludes the melodic line with a slur and a fermata. The left hand continues with chords and single notes.

Handwritten musical score for the first system. The top staff is for the violin, and the bottom two staves are for the piano. The key signature is B-flat major. The word "dolce" is written above the first measure. The piano part includes a circled "p" for piano and various articulation marks like slurs and accents.

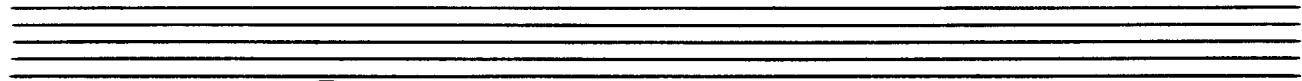
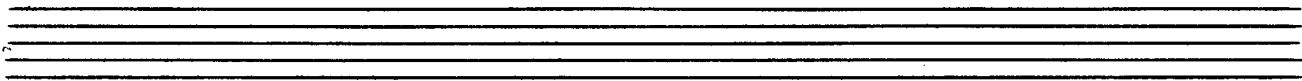
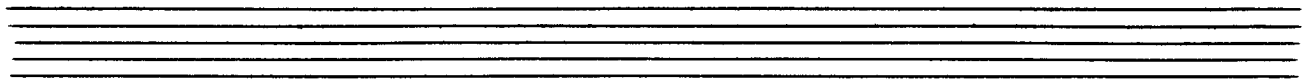
Handwritten musical score for the second system. It continues the violin and piano parts from the first system, featuring similar notation including slurs, accents, and dynamic markings.

Handwritten musical score for the third system. It concludes the page with a circled "p" and a circled "7" above the piano part, indicating a seventh chord.

Handwritten musical score for the first system. The treble clef staff is in B-flat major. The piano accompaniment is in bass clef, showing chords with stems pointing upwards.

Handwritten musical score for the second system. The treble staff continues the melodic line with slurs and accents. The piano part features a rhythmic pattern of eighth notes with stems pointing upwards, followed by chords with stems pointing downwards.

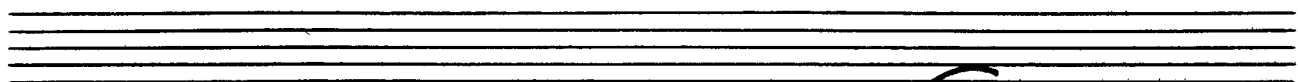
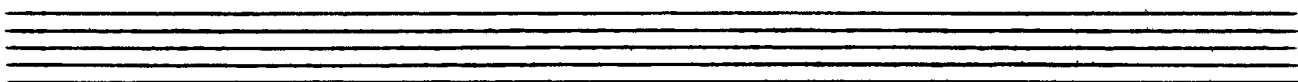
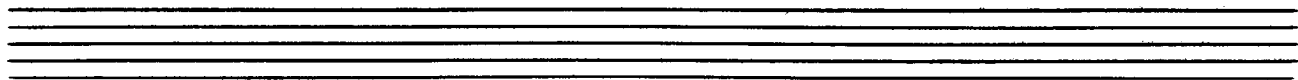
Handwritten musical score for the third system. The treble staff shows a melodic line with slurs and a fermata. The piano part includes chords with stems pointing upwards and downwards, and a final chord with a fermata.



Handwritten musical score for the first system. It consists of three staves. The top staff is for the violin, the middle for the right hand of the piano, and the bottom for the left hand. The key signature is B-flat major. The first measure of the violin part is a whole rest. The piano accompaniment features chords and melodic lines with various dynamics and articulations.

Handwritten musical score for the second system. It consists of three staves. The top staff is for the violin, the middle for the right hand of the piano, and the bottom for the left hand. The key signature is B-flat major. The violin part has a melodic line with slurs and accents. The piano accompaniment includes chords and moving lines.

Handwritten musical score for the third system. It consists of three staves. The top staff is for the violin, the middle for the right hand of the piano, and the bottom for the left hand. The key signature is B-flat major. The violin part features a melodic line with slurs and accents. The piano accompaniment includes chords and moving lines.



Handwritten musical score for the first system. The top staff is for the violin, showing a series of chords with accidentals and some notes with stems. The piano accompaniment consists of two staves (treble and bass clef) with notes and rests.

Handwritten musical score for the second system. The notation continues with complex chords in the violin part and corresponding piano accompaniment.

Handwritten musical score for the third system. The notation includes complex chords and melodic lines in both the violin and piano parts.

Handwritten musical score for the first system. The treble clef staff contains a melodic line with a slur over the first two measures and a fermata over the second measure. The piano part consists of eighth notes in the right hand and quarter notes in the left hand. The bass clef staff provides a simple harmonic accompaniment.

Handwritten musical score for the second system. The treble clef staff features a melodic line with a slur and a circled word "du" under a note in the second measure. The piano part includes eighth notes and chords with accents. The bass clef staff continues the accompaniment.

Handwritten musical score for the third system. The treble clef staff has a melodic line with a slur and the word "du" under a note in the second measure. The piano part features chords with accents in the right hand and quarter notes in the left hand.

Handwritten musical score for the first system. The treble clef staff is in a key signature of two flats (B-flat and E-flat) and contains a melodic line with slurs and accidentals (sharps and naturals). The piano staff is in a 3/4 time signature and contains a bass line with triplets and slurs.

Handwritten musical score for the second system. The treble clef staff is in a key signature of two flats and contains a melodic line with slurs and a triplet. The piano staff contains a bass line with slurs and a circled 'p' dynamic marking.

Handwritten musical score for the third system. The treble clef staff is in a key signature of two flats and contains a melodic line with slurs and accents. The piano staff contains a bass line with slurs and accents.

Handwritten musical score for the first system. It consists of three staves. The top staff is for Violin I, with a treble clef and a key signature of two flats (B-flat and E-flat). The middle and bottom staves are for the piano accompaniment, with a grand staff (treble and bass clefs) and a key signature of two flats. The music includes various notes, rests, and dynamic markings such as *p* and *f*. There are also some handwritten annotations and corrections.

Handwritten musical score for the second system, continuing the Violin I and Piano accompaniment from the first system. It consists of three staves with the same instrumentation and key signature. The notation includes complex rhythmic patterns and melodic lines with various articulations and dynamics.

Handwritten musical score for the third system, concluding the Violin I and Piano accompaniment. It consists of three staves with the same instrumentation and key signature. The system ends with a final cadence and some handwritten markings.

Adagio

Handwritten musical score for the first system. It consists of three staves: a single staff for the violin (top) and a grand staff for the piano (middle and bottom). The key signature is two flats (B-flat and E-flat), and the time signature is 4/4. The violin part features a melodic line with slurs and accents. The piano part includes arpeggiated chords and a bass line with simple chords.

Handwritten musical score for the second system. It consists of three staves: a single staff for the violin (top) and a grand staff for the piano (middle and bottom). The key signature is two flats (B-flat and E-flat), and the time signature is 4/4. The violin part continues with a melodic line, featuring slurs and accents. The piano part includes arpeggiated chords and a bass line with simple chords.

Handwritten musical score for the third system. It consists of three staves: a single staff for the violin (top) and a grand staff for the piano (middle and bottom). The key signature is two flats (B-flat and E-flat), and the time signature is 4/4. The violin part continues with a melodic line, featuring slurs and accents. The piano part includes arpeggiated chords and a bass line with simple chords.

Handwritten musical score for the first system. It consists of three staves: a treble clef staff at the top, a grand staff (treble and bass clefs) in the middle, and a bass clef staff at the bottom. The treble staff begins with a treble clef, a key signature of two flats (B-flat and E-flat), and a common time signature. It contains a melodic line with several notes, some with accents (^) and a downward-pointing arrow above a wavy line. The grand staff contains chords and single notes, with a dynamic marking 'f' (forte) on the left. The bass staff contains a simple bass line with quarter notes. A large brace spans across the top of the system.

Handwritten musical score for the second system. It consists of three staves: a treble clef staff at the top, a grand staff (treble and bass clefs) in the middle, and a bass clef staff at the bottom. The treble staff features a melodic line with slurs and accents (>). The grand staff contains chords and single notes, with dynamic markings 'p' (piano) and 'f' (forte) interspersed. The bass staff contains a bass line with quarter notes and rests.

Handwritten musical score for the third system. It consists of three staves: a treble clef staff at the top, a grand staff (treble and bass clefs) in the middle, and a bass clef staff at the bottom. The treble staff has a melodic line with slurs and accents (>). The grand staff contains chords and single notes. The bass staff contains a bass line with quarter notes. The system concludes with a double bar line.

Allegro

Handwritten musical notation for the first system, measures 1-3. The system consists of three staves: a single treble clef staff at the top, and a grand staff (treble and bass clefs) below. The key signature is B-flat major. The first staff contains a melodic line with notes G4, A4, Bb4, C5, D5, E5, and F5, with accents above the first three notes. The grand staff contains accompaniment with chords and moving lines in both hands.

Handwritten musical notation for the second system, measures 4-6. The system consists of three staves: a single treble clef staff at the top, and a grand staff (treble and bass clefs) below. The key signature is B-flat major. The first staff contains a melodic line with notes G4, A4, Bb4, C5, D5, E5, and F5, with an accent above the first note and a slur over the last three notes. The grand staff contains accompaniment with chords and moving lines in both hands.

Handwritten musical notation for the third system, measures 7-9. The system consists of three staves: a single treble clef staff at the top, and a grand staff (treble and bass clefs) below. The key signature is B-flat major. The first staff contains a melodic line with notes G4, A4, Bb4, C5, D5, E5, and F5, with an accent above the first note and a slur over the last three notes. The grand staff contains accompaniment with chords and moving lines in both hands.

Handwritten musical score for the first system. The top staff is for the violin, and the bottom two staves are for the piano. The key signature is B-flat major. The violin part begins with a circled 'p' (piano) and a dynamic marking 'dim' (diminuendo). The piano part also begins with a circled 'p' and has a 'dim' marking at the end of the system.

Handwritten musical score for the second system. The top staff is for the violin, and the bottom two staves are for the piano. The key signature is B-flat major. The piano part has a circled '7' and a 'pp' (pianissimo) marking. The violin part has a 'pp' marking in the second measure.

Handwritten musical score for the third system. The top staff is for the violin, and the bottom two staves are for the piano. The key signature is B-flat major. The piano part has a circled 'f' (forte) and 'fp' (fortissimo) markings. The violin part has a circled 'f' marking.

Handwritten musical score for the first system. The system consists of three staves: a treble clef staff and a grand staff (treble and bass clefs). The key signature is one sharp (F#) and the time signature is common time. The right hand contains a melodic line with slurs and accents. The left hand contains chords and moving lines. Dynamics include 'f' and 'fp'.

Handwritten musical score for the second system. The system consists of three staves. The notation continues with slurs, accents, and dynamic markings like 'p' in a circle.

Handwritten musical score for the third system. The system consists of three staves. The key signature is one flat (Bb) and the time signature is common time. The right hand contains a melodic line with slurs and accents. The left hand contains chords and moving lines. Dynamics include 'f'.

Handwritten musical score for the first system. The treble clef part begins with a key signature of one flat (B-flat) and contains several notes with a slur over the first two. The bass clef part features a series of chords and notes, including a prominent 'f' dynamic marking.

Handwritten musical score for the second system. The treble clef part shows a series of sixteenth-note runs and chords. The bass clef part includes a 'p' dynamic marking and a 'f' dynamic marking, with various rhythmic values.

Handwritten musical score for the third system. The treble clef part starts with a '1. D.C.' marking and contains a series of notes with a 'f' dynamic marking. The bass clef part includes a 'p' dynamic marking and a 'f' dynamic marking.

Handwritten musical score for the fourth system. The treble clef part features a series of notes with a slur and a 'p' dynamic marking. The bass clef part includes a 'p' dynamic marking and a 'f' dynamic marking.

Handwritten musical score for the first system. The top staff is for the violin, and the bottom two staves are for the piano. The key signature has one flat (B-flat). The violin part begins with a melodic line, followed by a trill-like figure. The piano accompaniment consists of chords and single notes.

Handwritten musical score for the second system. The top staff is for the violin, and the bottom two staves are for the piano. The key signature has one flat. The violin part features a melodic line with a fermata. The piano accompaniment includes chords and single notes, with dynamic markings *p* and *f* circled.

Handwritten musical score for the third system. The top staff is for the violin, and the bottom two staves are for the piano. The key signature has one flat. The violin part features a melodic line with a fermata. The piano accompaniment includes chords and single notes, with dynamic markings *p* and *f* circled.

