

KONZERT für FLÖTE und

Klarinette

+

gr. Streichorchester

v.

Adolf Scherbaum

GRAVE

1

1. Violin
2. Violin
Bratsch
Cello

1

Handwritten musical staff with a few notes.

(Wenn mit großem Streichorchester)

Eintragung für 2-4 Kontrabässe
 CTB = Celli + Kontrabässe (C = nur Celli) allein

Besetzung -

Flöte
 Klarinette (B) in
 Partitur klingend
 notiert

für Streichorchester
 oder
 Streichquartett (ohne
 Kontrabass)

1

reuner-notenschreib-papiere, 12 systeme, 0301

Flöte

Klarinette (Klingend notiert!)
(sonst in B)

1+2 Viol.

Bratsch

Cello Ctrb

P133

2

Flöte Solo

3

Klarin. Solo

Hr. Viol.

Br.

Cello (Celloin)

Bass

4

neuner-notenschreib-papiere, 12 systeme, 0301

Handwritten musical score for measures 5-6. The score is written in blue ink on a white background. It features five staves for strings: Violin I, Violin II, Viola, Cello + Bass, and Double Bass. The notation includes various musical symbols such as notes, rests, slurs, and dynamic markings like *pp*, *f*, and *p*. A circled number '5' is located at the top right of the first staff. The bottom right of the section contains the handwritten note "(nur Celli)".

Handwritten musical score for measures 7-8. The score is written in blue ink. It features three staves: Flute, Clarinet, and Cello Solo. The notation includes notes, rests, slurs, and dynamic markings like *p*, *f*, and *pp*. A circled number '6' is located at the top right of the first staff.

Handwritten musical score for measures 9-10. The score is written in blue ink. It features two staves: Flute and Clarinet. The notation includes notes, rests, slurs, and dynamic markings like *pp*, *acc.*, and *dim*. A circled number '7' is located at the top right of the first staff. A large handwritten number '6' is written in the center of the page, and a large handwritten number '8' is written vertically on the right side. The bottom right of the section contains the handwritten note "(nur mit dim)".

Presto **legg.**

Flöte
Klarinette
4+2 Viol.
Br.
Cello+B.

pp *pp* *pp* *pp*

C+B alle-

f **f** **f** **f** **f**

4+2 Viol.
Br.
Cello+B.

f *f* *f* *f* *f*

8

Flöte

Klarin.

1/2 Viol.

Bu.

Cello

C+B

arco

9

1/2 Viol.

Bu.

Cello+B

arco

10

Handwritten musical score for measures 11-14. The score is written in blue ink on a yellowed page. It features five staves: Flöte (Flute), Klarin. (Clarinet), 1+2 Viol. (Violins 1 and 2), Br. (Bassoon), and Cello+Bässe (Cello and Basses). The Flute part has a dynamic marking of *ff* and a tempo marking of *8V*. The Clarinet part has a dynamic marking of *ff*. The Violins part has a dynamic marking of *ff* and a tempo marking of *1+2*. The Bassoon part has a dynamic marking of *ff*. The Cello and Basses part has a dynamic marking of *ff* and a tempo marking of *1+2*. The score includes various musical notations such as notes, rests, and dynamic markings. A large bracket on the left side groups the Violins, Bassoon, and Cello/Basses staves. A large number '2' is written in the center of the score, and a large number '4' is written below it. The measure number '11' is circled at the end of the first system.

Handwritten musical score for measures 12-14. The score is written in blue ink on a yellowed page. It features two staves: Flöte (Flute) and Klarin. (Clarinet). The Flute part has a dynamic marking of *ff* and a tempo marking of *6*. The Clarinet part has a dynamic marking of *ff* and a tempo marking of *8*. The score includes various musical notations such as notes, rests, and dynamic markings. The measure number '12' is circled at the end of the first system. The text 'Dal Segno' is written at the bottom right, followed by 'mit ||:'. The measure number '11' is circled at the end of the first system.

||G.P.|| →

GRAVE tempo 1

13

1. Violin
2. Violin
Bratscha
Cello

9

Flöte

Klarinette

1/2 Viol.

Bratsch.

Cello C+B

PI33

avco

15

Flöte Solo

Klarin. Solo

1+2 Viol.

Br.

Cello (C. Collein)

Handwritten musical score for measures 16-17. The score is for Flute Solo, Clarinet Solo, Violins 1+2, Brass, and Cello/Double Bass. It features complex melodic lines with slurs and dynamic markings like p, mf, and f. The Cello part includes the instruction 'Celi allein'.

Handwritten musical score for measures 18-21. The score is for Flute, Clarinet, Violin 1, Violin 2, Brass, and Cello/Double Bass. It features complex melodic lines with slurs and dynamic markings like ff. The Cello/Double Bass part includes the instruction 'Cello + Bässe'.

Handwritten musical score for measures 18 and 19. The score is written for a large string ensemble and includes the following parts:

- Violin I (Viol. I):** Treble clef, starting with a forte (**f**) dynamic.
- Violin II (Viol. II):** Treble clef, starting with a forte (**f**) dynamic.
- Viola (Viola):** Treble clef, starting with a forte (**f**) dynamic.
- Violoncello (Cello):** Bass clef, starting with a forte (**f**) dynamic.
- Double Bass (Bass):** Bass clef, starting with a forte (**f**) dynamic.

Measure 18 features complex rhythmic patterns with many beamed notes and accents. Measure 19 continues with similar textures, including a section marked *(nur Cello)* for the cello part.

Handwritten musical score for measures 19 and 20, featuring woodwinds and solo cello.

- Flöte (Flute):** Treble clef, starting with a piano (**p**) dynamic.
- Klarinette (Clarinet):** Bass clef, starting with a piano (**p**) dynamic.
- Cello Solo (Cello Solo):** Bass clef, starting with a piano (**p**) dynamic.

Measure 19 shows melodic lines for the flute and clarinet. Measure 20 includes a section marked *acc.* (accelerando) and a tempo change to **6/4**.

Handwritten musical score for measures 20 and 21, featuring woodwinds and strings.

- Flöte (Flute):** Treble clef, starting with a piano (**p**) dynamic.
- Klarinette (Clarinet):** Bass clef, starting with a piano (**p**) dynamic.

Measure 20 includes a section marked *acc.* (accelerando) and a tempo change to **6/4**. Measure 21 features a section marked *Schn brech* (Schnell brechen) and a dynamic of **pp** (pianissimo).

(Adagio)

Flöte
Klarin.
1+2 Viol.
Bratcel
Cello + Bässe

gr. Viol.)
Lunga

21

Satz 2

Presto

Flöte
Klarin.
1+2 Holz
Bratsch
Celli + Bass

pp

22

1+2 Holz
Bratsch
Celli

Alllegretto (erotisch)

Flöte
Klarin.
Hr./Kor.
Br.
Celli

mf = t
p
p133
LC+B

Flöte
Klarin.
Hr./Kor.
Bratschi.
Celli

f
p

23

Handwritten musical score for the first system, featuring five staves:

- Flöte** (Flute): Treble clef, starting with a *mf* dynamic. Includes various accidentals (flats, sharps) and slurs.
- Klarin.** (Clarinet): Treble clef, starting with a rest, then playing with *mf* dynamics.
- 1+2 Viol.** (Violins 1 & 2): Treble clef, playing with *arco* (arco) dynamics.
- Bratsch.** (Viola): Bass clef, playing with *arco* dynamics.
- Celli + B.** (Cellos and Double Basses): Bass clef, playing with *arco* dynamics.

Handwritten musical score for the second system, featuring five staves:

- Flöte** (Flute): Treble clef, starting with a *f* dynamic. Includes various accidentals and slurs.
- Klarin.** (Clarinet): Treble clef, playing with *f* dynamics.
- 1+2 Viol.** (Violins 1 & 2): Treble clef, playing with *f* dynamics.
- Br.** (Viola): Bass clef, playing with *f* dynamics.
- Celli + B.** (Cellos and Double Basses): Bass clef, playing with *mf/pizz* dynamics.

A circled number **24** is written in the top right corner of the system.

Handwritten musical score for the first system, featuring five staves:

- 1 Viol.** (Violin I): Treble clef, starting with a b (flat) and w (ritardando) marking. Contains complex melodic lines with many accidentals and slurs.
- 2 Viol.** (Violin II): Treble clef, starting with ff (fortissimo).
- Bn** (Bassoon): Bass clef, starting with ff .
- Celli + Bässe** (Cellos and Double Basses): Bass clef, starting with ff .

The system concludes with a double bar line and a fermata over the final notes.

Handwritten musical score for the second system, featuring five staves:

- 1 Viol.** (Violin I): Treble clef, continuing the melodic line from the first system.
- 2 Viol.** (Violin II): Treble clef.
- Bn** (Bassoon): Bass clef.
- Celli + Bässe** (Cellos and Double Basses): Bass clef.

The system concludes with a double bar line and a fermata over the final notes. A circled number **25** is written in the right margin.

Two empty musical staves at the bottom of the page, each starting with a bass clef.

17 **D**

26

Klarinetten Solo

mf

Flöte

2 Klar.

Bratsch

Celli allein

27

Flöte

Klarinetten

1 Klar.

2 Klar.

Br.

Celli + Bässe

trcs

18

E

neuner-notenschreib-papiere, 12 systeme, 0301

Flöte

Klarin.

1+2 Holz

Bratsch

Celli + Bässe

Flöte (frei)

Klarin.

(frei) (Presto) rit + cmi

Tempo (Anfang No 2) 2

Oresta

Flöte

Klarin.

1+2 Viol.

Bratsch

Celli + Bässe

30

Allegretto (erotisch)

Flöte
Klarin.
ATZ/Kiol.
Br.
Celli

mf *f*

P *P133* *P133* *P133*

LC+B

ATZ/Kiol.
Bratschi.
Celli

f *f* *f* *f* *f* *f*

P *P* *P* *P* *P* *P*

dim *dim* *dim* *dim* *dim* *dim*

3 *3* *3* *3* *3* *3*

31

Handwritten musical score for the first system, measures 1-4. The instruments and their parts are:

- Flöte** (Flute): Treble clef, starting with a melodic line in measure 1, marked *mf*.
- Klarin.** (Clarinet): Treble clef, rests in measures 1-2, then enters in measure 3 with a melodic line, marked *mf*.
- 1+2 Viol.** (Violins 1 & 2): Treble clef, playing a rhythmic accompaniment, marked *arco*.
- Bratsch.** (Viola): Treble clef, playing a rhythmic accompaniment, marked *arco*.
- Celli + B.** (Cellos and Basses): Bass clef, playing a rhythmic accompaniment, marked *arco*.

The score includes various musical notations such as slurs, accents, and dynamic markings.

Handwritten musical score for the second system, measures 5-8. The instruments and their parts are:

- Flöte** (Flute): Treble clef, continues the melodic line, marked *f*.
- Klarin.** (Clarinet): Treble clef, continues the melodic line, marked *f*.
- 1+2 Viol.** (Violins 1 & 2): Treble clef, playing a rhythmic accompaniment, marked *arco*.
- Br.** (Bassoon): Bass clef, playing a rhythmic accompaniment, marked *arco*.
- Celli + B.** (Cellos and Basses): Bass clef, playing a rhythmic accompaniment, marked *arco*.

The score includes various musical notations such as slurs, accents, and dynamic markings. A circled number "32" is visible in the upper right corner of the system.

1. Viol.

2. Viol.

Bn

Celli + Bässe

33

34

Klarin. Solo

1. Flöte

2. Flöte

Bretsch

Celli allein

35

Flöte

Klarin.

1. Flöte

2. Flöte

Bn

Celli + Bässe

Prss

Flöte
Klavier
1+2 Holz
Bratschi
Celli + Bässe

Handwritten musical score for measures 36-37. The score is for Flute, Piano, Woodwinds (1+2), Violins, and Celli/Basses. It features complex rhythmic patterns and dynamic markings like 'pizz' and 'arco'.

Flöte
Klavier

(frei)

Handwritten musical score for measures 38-40. The score is for Flute and Piano. It features a 'frei' (ad libitum) section with complex rhythmic patterns and dynamic markings like 'pizz' and 'arco'.

(frei) (Presto) rit + dim

legg.

pp

Handwritten musical score for measures 41-45. The score is for Flute and Piano. It features a 'Presto' section with 'rit + dim' (ritardando and decrescendo) markings, followed by a 'legg.' (leggiero) section and a 'pp' (pianissimo) section.

Handwritten musical score for measures 46-47. The score is for Flute and Piano. It features a 'Presto' section with 'rit + dim' (ritardando and decrescendo) markings, followed by a 'legg.' (leggiero) section and a 'pp' (pianissimo) section.

Flöte (Prestissimo)

Flöte
Klarin.
1+2 Viol.
Br.
Celli+B
C+B

38
39

reuner-notenschreib-papier, 12 systeme, 0301

Handwritten musical score for page 40. The score consists of five staves. The top two staves are for woodwinds (likely Flute and Clarinet), and the bottom three are for strings (Violin I, Violin II, and Cello/Double Bass). The time signatures are 3/8, 2/4, 3/8, and 2/4. The notation includes various chords, melodic lines, and dynamic markings. There are some corrections and annotations in blue ink.

Handwritten musical score for page 41. The score consists of five staves. The top two staves are for woodwinds (likely Flute and Clarinet), and the bottom three are for strings (Violin I, Violin II, and Cello/Double Bass). The time signatures are 3/8, 2/4, and 2/4. The notation includes various chords, melodic lines, and dynamic markings. There are some corrections and annotations in blue ink.

3

42

ADAGIO

1+2 Violinen

Bratschen 6

Celli + B 4

p

p

Flöte (frei)

1+2 Viol.

ffp

Br.

ffp

Cy(B)

ffp

43

Flöte

1/2 Viol.

Bratsch

C+T

ff

pp

pp

pp

dim

p

Klarinette Solo (frei)

p

f

breit

44

(mitteln)

mf

pp

subito appassionato

1 Viol.
2 Viol.
Bratsch
CtB

45

CtB

Klarinette

46

neuner-notenschreib-papiere, 12 systems, 0301

Handwritten musical score for Flute, Clarinet, Violin, Viola, and Cello/Double Bass. The score is written in blue ink on a white background.

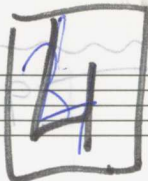
- Flöte:** Treble clef, key signature of one flat (B-flat). The notation includes a melodic line with various ornaments and dynamics like *pp*.
- Klarin.**: Treble clef, key signature of one flat. Includes the instruction *(frei (nobis))* and dynamics like *pp*.
- 1. u. 2. Viol.**: Treble clef, key signature of one flat. Includes the instruction *Coda* and dynamics like *pp*.
- Bratsch.**: Treble clef, key signature of one flat. Includes the instruction *Coda* and dynamics like *pp*.
- Cl(B)**: Bass clef, key signature of one flat. Includes the instruction *Adagio* and dynamics like *pp*.

The score concludes with a circled number **47** at the bottom right of the system.

Handwritten musical score for Clarinet Solo. The score is written in blue ink on a white background.

- Klarinette Solo:** Treble clef, key signature of one flat. The notation includes a melodic line with various ornaments and dynamics like *pppp*.
- Lunga:** A long horizontal line indicating a sustained note or breath mark.

The score concludes with a circled number **31** at the bottom right of the system.



Presto

Handwritten musical score for the first system, measures 1-5. The score includes staves for Flöte, Klarinette, 1+2 (Hörn.), Bratsche, and Cello + Bass.

- Flöte:** Rests in measures 1-4, then notes in measure 5.
- Klarinette:** Rests in measures 1-4, then notes in measure 5.
- 1+2 (Hörn.):** Rests in measures 1-4, then notes in measure 5.
- Bratsche:** Notes in measures 1-5 with dynamics p and pp .
- Cello + Bass:** Notes in measures 1-5 with dynamics p and pp .

Empty musical staff with a bass clef.

Handwritten musical score for the second system, measures 6-10. The score includes staves for Flöte, Klarinette, 1+2 (Hörn.), Bratsche, and Cello + Bass.

- Flöte:** Notes in measures 6-10.
- Klarinette:** Notes in measures 6-10.
- 1+2 (Hörn.):** Notes in measures 6-10.
- Bratsche:** Notes in measures 6-10 with dynamics f and pp .
- Cello + Bass:** Notes in measures 6-10 with dynamics f and pp .

Handwritten musical score for page 48, featuring two systems of staves. The first system includes:

- Two staves for strings (Violins and Violas) with notes and dynamics like *ff*.
- A staff for Cello and Basses with notes and dynamics like *ff*.
- A staff for a woodwind instrument (likely Clarinet) with notes and dynamics like *ff*.

The second system includes:

- A staff for Cello and Basses with notes and dynamics like *ff*.
- A staff for a woodwind instrument (likely Clarinet) with notes and dynamics like *ff*.
- A staff for a woodwind instrument (likely Flute) with notes and dynamics like *ff*.

Handwritten annotations include *arco* and *ff*. The score is written in blue ink on a white background.

A single empty staff with a bass clef, likely a placeholder for a double bass part.

Handwritten musical score for page 33, featuring two systems of staves. The first system includes:

- Two staves for Violins (1 and 2) with notes and dynamics like *ff*.
- A staff for Viola with notes and dynamics like *ff*.
- A staff for Cello and Basses with notes and dynamics like *ff*.

The second system includes:

- A staff for Violins (1 and 2) with notes and dynamics like *ff*.
- A staff for Viola with notes and dynamics like *ff*.
- A staff for Cello and Basses with notes and dynamics like *ff*.

Handwritten annotations include *arco* and *ff*. The score is written in blue ink on a white background.

Handwritten musical score for measures 48-50. The score is written in blue ink on aged paper. It features five staves, each with a different instrument or section:

- Staff 1:** Flute (Flöte)
- Staff 2:** Clarinet (Klarinette)
- Staff 3:** Violin 1 (1. Viol.)
- Staff 4:** Violin 2 (2. Viol.)
- Staff 5:** Viola (Viola), Cello + Bass (Cello + B.), and Contrabass (Kontrabass)

The notation includes various musical symbols such as notes, rests, slurs, and dynamic markings. A circled measure number '49' is at the beginning of the system, and a circled '50' is at the end. There are some faint red markings and a small '55' written in the lower right of the system.

Handwritten musical score for measures 49-50, continuing from the previous system. The notation is in blue ink. The instruments and sections are:

- Staff 1:** Flute (Flöte)
- Staff 2:** Violin 1 (1. Viol.)
- Staff 3:** Violin 2 (2. Viol.)
- Staff 4:** Viola (Viola), Cello + Bass (Cello + B.), and Contrabass (Kontrabass)

Large handwritten numbers (3, 2, 3, 2, 3) are written across the staves, likely indicating fingerings or bowings. The word 'arco' is written at the end of the system. A circled measure number '49' is at the beginning, and a circled '50' is at the end. There are some faint red markings and a small '55' written in the lower right of the system.

1+2 Violine (eine Spur ruhiger) ad. lib.

Bratsch 6

Cello + Bässe 8

Block A

51

Flöte Solo

mf

f

Block A

Block A

52

mf

f

Block A

Block II

53

ff

f

Block A

Block A

54

Klarin Solo 55

1st Viol. *mp*
Viola *mp*
Cello + Bässe *mp*

Block B

Klarin. Solo 56

Block B

Block B

Block B

Handwritten musical score for page 59, featuring a woodwind and string ensemble. The instruments listed are Klarinette (Clarinet), 1. Viol. (1st Violin), 2. Viol. (2nd Violin), Bratsch (Viola), and Cellos+Bässe (Cello and Basses). The score includes various musical notations such as notes, rests, and dynamic markings. A large bracket on the left groups the instruments into sections of 2 and 4. A circled '3' is present in the 1st Violin part, and a circled '8' is in the 2nd Violin part. The bottom right of the page has a circled '2'.

Handwritten musical score for page 60, featuring a woodwind and string ensemble. The instruments listed are Flöte (Flute), Klarin. (Clarinet), 1. Viol. (1st Violin), 2. Viol. (2nd Violin), Bratsch (Viola), and Cellos+Bässe (Cello and Basses). The score includes various musical notations such as notes, rests, and dynamic markings. A large bracket on the left groups the instruments into sections of 2 and 4. The bottom right of the page has the word 'arco' and a circled '37'.

neuner-notenschreib-papiere, 12 systems, 0301

61

ADAGIO (rit-dim)

1. Viol.

2. Viol.

Bratsch

Cello + Bass

4

ff (arco)

62

(frei) sehr ruhig

Flöte

Klarinette

1+2 Viol.

Bratsch

Cello + B.

ff

pp

F

Presto

65

Flöte

Klarinette

1+2 Viol.

Bratsch.

4 Cello + Bass

(Musical notation for measures 65-69)

66

Br

Cello + Bass

(Musical notation for measures 66-70)

1+2
Br.
Cello + Bass

ff

arco

arco

arco

1 Viol.
2 Viol.
Bassoon
Cello + B.

ff

arco

Handwritten musical score for measures 68-70. The score is written for five staves:

- Flute 1 (1. Flöte):** Treble clef, starting with a sharp sign (#).
- Flute 2 (2. Flöte):** Treble clef.
- Violin (Viol.):** Treble clef, with a *1 Viol* marking.
- Viola (Viola):** Treble clef, with a *2 Viol* marking.
- Brass (Br):** Bass clef, with a *Br* marking.
- Cello + Bass (Cello + B.):** Bass clef, with a *Cello + B.* marking.

The music features complex rhythmic patterns, including triplets and sixteenth notes. There are various accidentals (sharps, flats, naturals) and dynamic markings throughout the passage.

Handwritten musical score for measures 69-70. The score is written for five staves:

- Flute 1 (1. Flöte):** Treble clef, marked with a circled **69** at the beginning and a circled **70** at the end. It features a wavy line indicating a tremolo.
- Violin (Viol.):** Treble clef, with a *Viol.* marking.
- Viola (Viola):** Treble clef, with a *2 Viol.* marking.
- Brass (Br):** Bass clef, with a *Br* marking.
- Cello + Bass (Cello + B.):** Bass clef, with a *Cello + B.* marking.

Large handwritten numbers **3**, **2**, **3**, **2**, **3** are written across the staves, likely indicating fingerings or bowings. The word *arco* is written at the end of the section. The measure numbers **69** and **70** are circled.

1+2 Violine (eine Spur ruhiger) ad. lib.

Bratsch 6

Vielle + Bässe 8

Block A

71

Flöte Solo

mf

Block A

72

mf

f

Block A

Block II

73

ff

f

Block A

Block A

74

Klarin Solo (75)

1. HZ Viol.
Br.
Cello + Bässe

mp
f

Block (B)

Klarin. Solo

f

Block (B)

f

Block B

ff

Block B

79

Klarinette

1 Viol.

2 Viol.

Bratsch

Cello + Bässe

80

Flöte

Klarin.

1 Viol.

2 Viol.

Bratsch

Cello + Bässe

P133

Handwritten musical score for measures 81-82. The score includes staves for Flöte, Klarin., 1. Viol., 2. Viol., Bratschi., and Cello + Bässe. Measure 81 features a wavy line in the Flöte part and rests in the strings. Measure 82 contains rhythmic notation with time signatures 2, 3, 2, 4, 3 and dynamic markings *ff* and *pizz*.

Handwritten musical score for measures 82-83. The score includes staves for Flöte, Klarin., and strings. Measure 82 shows melodic lines for Flöte and Klarin. with dynamics *mf*, *f*, and *ff*. Measure 83 features rhythmic notation with time signatures 2, 3, 2, 3, 2 and dynamic markings *f* and *ff*.

46

84

Flöte

Klarin.

1 Viol.

2 Viol.

Bratsch

Celli + Bässe

f *mf*