

KONZERT FÜR  
KLAVIER +  
ORCHESTER.

(KLAVIERAUSZUG)  
WIE PARTITUR.

Notenheft

Konzert für  
Klavier  
und Orchester (in 3 Teilen)  
von F. Scherbaum

Besetzung:  
Orchester ( ~~Flöten~~ )  
2 Flöten ( ~~Flöten~~ )  
2 Oboen ( ~~Oboen~~ )  
2 Klarinetten in C  
2 Fagotte  
3 Trompeten  
4 Hörner  
3 Posunen  
Akkordeon  
Pauke

KLAVIERAuszug  
MIT SOLO STIMME.

*Allegro*

S  
O  
L  
O

O  
R  
C  
H  
E  
S  
T  
R

Handwritten musical score for the first system. The top staff is in treble clef and contains a melodic line with various notes, rests, and accidentals (flats and naturals). A fermata is placed over a note. The grand staff below consists of a treble and a bass clef, with piano accompaniment indicated by a brace. The piano part includes chords and some melodic fragments.

Handwritten musical score for the second system. The top staff continues the melodic line with accents and a fermata. The grand staff continues the piano accompaniment with chords and melodic lines. A circled number '2' is written at the end of the system, possibly indicating a second ending or a specific measure.



Handwritten musical score for the first system. It consists of four staves. The top staff is in treble clef and contains a triplet of eighth notes, followed by a series of sixteenth notes and eighth notes, all under a long slur. The second staff is in bass clef and contains a triplet of eighth notes, followed by a series of sixteenth notes and eighth notes, all under a long slur. The third staff is in treble clef and contains a series of quarter notes and eighth notes, all under a long slur. The fourth staff is in bass clef and contains a series of quarter notes and eighth notes, all under a long slur. The system is divided into two measures by a vertical bar line.

Handwritten musical score for the second system. It consists of four staves. The top staff is in treble clef and contains a series of sixteenth notes and eighth notes, all under a long slur. The second staff is in bass clef and contains a series of sixteenth notes and eighth notes, all under a long slur. The third staff is in treble clef and contains a series of quarter notes and eighth notes, all under a long slur. The fourth staff is in bass clef and contains a series of quarter notes and eighth notes, all under a long slur. The system is divided into two measures by a vertical bar line. A circled number '5' is written at the end of the system.

Handwritten musical notation for the first system. It consists of two staves. The upper staff is in treble clef and contains a melodic line with a sharp key signature and a long slur. The lower staff is in bass clef and contains a bass line with a sharp key signature. The system concludes with a double bar line.

Handwritten musical notation for the second system. It consists of two staves. The upper staff is in treble clef and contains a melodic line with a sharp key signature and a long slur. The lower staff is in bass clef and contains a bass line with a sharp key signature. The system concludes with a double bar line and a circled number '5' on the right.

Handwritten musical notation for the third system. It consists of two staves. The upper staff is in treble clef and contains a melodic line with a sharp key signature and a slur. The lower staff is in bass clef and contains a bass line with a sharp key signature. The system concludes with a double bar line.

Handwritten musical notation for the fourth system. It consists of two staves. The upper staff is in treble clef and contains a melodic line with a sharp key signature and a long slur. The lower staff is in bass clef and contains a bass line with a sharp key signature. The system concludes with a double bar line and a circled number '6' on the right.

Handwritten musical score for the first system. It consists of three staves. The top staff is in treble clef with a key signature of one sharp (F#). The middle staff is in treble clef with a key signature of one sharp (F#). The bottom staff is in bass clef with a key signature of one sharp (F#). The music features complex chordal textures, slurs, and accents.

7

Handwritten musical score for the second system. It consists of three staves. The top staff is in treble clef with a key signature of one sharp (F#). The middle staff is in treble clef with a key signature of one sharp (F#). The bottom staff is in bass clef with a key signature of one sharp (F#). The music continues with complex chordal textures, slurs, and accents.

Handwritten musical score for the third system. It consists of three staves. The top staff is in treble clef with a key signature of one sharp (F#). The middle staff is in treble clef with a key signature of one sharp (F#). The bottom staff is in bass clef with a key signature of one sharp (F#). The music features dense chordal passages and melodic lines.



Handwritten musical notation for the first system. The treble staff contains a melodic line with notes, rests, and slurs. The bass staff contains a harmonic accompaniment with chords and notes. Dynamic markings include *dim* and *p*. There are also some handwritten annotations above the treble staff, possibly indicating fingerings or phrasing.

Handwritten musical notation for the second system. The treble staff continues the melodic line with notes and slurs. The bass staff continues the harmonic accompaniment. Dynamic markings include *dim* and *p*. There are also some handwritten annotations above the treble staff.

Handwritten musical notation for the third system. The treble staff features a melodic line with notes and slurs. The bass staff contains a harmonic accompaniment with notes and rests. Dynamic markings include *dim* and *p*. There are also some handwritten annotations below the bass staff, possibly indicating fingerings or phrasing.

Handwritten musical score for the first system. It consists of two staves. The upper staff is in treble clef with a key signature of one sharp (F#) and contains a melodic line with slurs and accents. The lower staff is in bass clef and contains a harmonic accompaniment with slurs and accents. A circled number '1' is written at the beginning of the first measure.

Handwritten musical score for the second system, continuing from the first. It features two staves with similar notation, including slurs and accents. A circled number '2' is written at the end of the system.

Handwritten musical score for the third system. The notation continues on two staves, with the word 'din' written in the first measure of the upper staff. The system concludes with a double bar line.

Handwritten musical score for the fourth system. It consists of two staves. The word 'din' is written in the first measure of the upper staff. The system ends with a circled number '3' at the far right.



Handwritten musical score for the first system, consisting of four staves. The top staff is in treble clef and contains a melodic line with notes, rests, and a dynamic marking of *ff*. The second staff is in bass clef and contains a lower melodic line with notes and rests. The third staff is in treble clef and contains a series of notes with stems, some with dynamic markings like *ff* and *ff*. The fourth staff is in bass clef and contains a series of notes with stems, some with dynamic markings like *ff* and *ff*. There are also some handwritten annotations like *din* and *ff* scattered throughout the system.

Handwritten musical score for the second system, consisting of four staves. The top staff is in treble clef and contains a melodic line with notes, rests, and a dynamic marking of *ff*. The second staff is in bass clef and contains a lower melodic line with notes and rests. The third staff is in treble clef and contains a series of notes with stems, some with dynamic markings like *ff* and *ff*. The fourth staff is in bass clef and contains a series of notes with stems, some with dynamic markings like *ff* and *ff*. There are also some handwritten annotations like *din* and *ff* scattered throughout the system. A circled number '12' is written in the top right corner of the system.

Handwritten musical score for the first system. It consists of four staves. The top staff is a piano part with a treble clef, a circled 'p' dynamic marking, and a 'cresc..' marking. The second staff is a violin part with a treble clef and a 'cresc.' marking. The third staff is a cello part with a bass clef. The bottom staff is a double bass part with a bass clef. The music is written in a sketchy, handwritten style with various notes, rests, and dynamic markings.

Handwritten musical score for the second system. It consists of four staves. The top staff is a piano part with a treble clef and a sharp sign. The second staff is a violin part with a treble clef and a sharp sign. The third staff is a cello part with a bass clef and a sharp sign. The bottom staff is a double bass part with a bass clef and a sharp sign. The music continues in a sketchy, handwritten style.



Handwritten musical score for the first system. It consists of four staves. The top staff is in treble clef with a key signature of one sharp (F#). It contains two measures of music with notes and slurs. The second staff is in bass clef with a key signature of one sharp (F#) and contains two measures of music with notes and slurs. The third and fourth staves are in treble and bass clefs respectively, with a key signature of one sharp (F#). They contain two measures of music with notes and slurs.

Handwritten musical score for the second system. It consists of four staves. The top staff is in treble clef with a key signature of one sharp (F#). It contains two measures of music with notes and slurs. The second staff is in bass clef with a key signature of one sharp (F#) and contains two measures of music with notes and slurs. The third and fourth staves are in treble and bass clefs respectively, with a key signature of one sharp (F#). They contain two measures of music with notes and slurs.

Two empty musical staves at the bottom of the page, consisting of five lines each.

Handwritten musical score for the first system, measures 1-14. It features a treble clef with a key signature of one sharp (F#) and a common time signature. The melody in the treble clef includes accents and slurs. The bass clef contains a complex accompaniment with many beamed notes. The grand staff includes piano and forte dynamics markings.

Handwritten musical score for the second system, measures 15-28. It continues the notation from the first system. A circled measure number "14" is written in the top right corner. The notation includes various musical symbols such as slurs, accents, and dynamic markings.



Handwritten musical score for the first system. It consists of three staves. The top two staves are for a violin and a viola, both in treble clef with a key signature of one sharp (F#). The bottom two staves are for a piano, with the right hand in treble clef and the left hand in bass clef. The piano part includes a 7-measure rest in the left hand and a 7-measure rest in the right hand. The piano part features a melodic line in the right hand and a bass line in the left hand. A bracket labeled "dom" is placed under the piano part in the second measure. The system is divided into two measures by a vertical bar line.

Handwritten musical score for the second system. It consists of three staves. The top two staves are for a violin and a viola, both in treble clef with a key signature of one sharp (F#). The bottom two staves are for a piano, with the right hand in treble clef and the left hand in bass clef. The piano part includes a 7-measure rest in the left hand and a 7-measure rest in the right hand. The piano part features a melodic line in the right hand and a bass line in the left hand. A bracket labeled "dom" is placed under the piano part in the second measure. A box containing the number "75" is located in the upper right corner of the system. The system is divided into two measures by a vertical bar line.

Handwritten musical score for the first system, measures 14-15. The notation includes a treble clef and a bass clef. The key signature has one sharp (F#). The right hand part shows a melodic line with eighth notes and a final chord. The left hand part shows a bass line with chords and a final chord.

16

Handwritten musical score for the second system, measures 16-17. The notation includes a treble clef and a bass clef. The key signature has one sharp (F#). The right hand part shows a melodic line with a slur and a final chord. The left hand part shows a bass line with chords and a final chord. The word "dim" is written above the first measure and below the second measure.

Solo (Andante)

Handwritten musical score for the first system. It features a piano (*p*) dynamic marking and a treble clef. The music consists of a melodic line with slurs and a bass line with chords and a fermata.

Handwritten musical score for the second system. It includes a forte (*f*) dynamic marking and a boxed section marker labeled 'A'. The music continues with melodic and harmonic development.

Handwritten musical score for the third system. It shows a boxed section marker labeled 'C' and a piano (*p*) dynamic marking. The music features a complex melodic line with many slurs.

Adagio (sehr ruhig)

Handwritten musical score for the fourth system, marked Adagio (*sehr ruhig*). It includes a piano (*p*) dynamic marking and a boxed section marker labeled 'D'. The music is slower and more lyrical.

Tempo (I)

Handwritten musical notation for the first system. The treble staff contains a series of chords and notes, with a dynamic marking of *pp* and a *cresc.* marking. The bass staff features a complex, dense texture of notes and rests, with a large slur covering several measures.

Handwritten musical notation for the second system. The treble staff continues with chords and notes, while the bass staff shows a continuation of the dense texture with various note values and rests.

Handwritten musical notation for the third system. The treble staff includes a circled *f* dynamic marking and a *ff* marking. The bass staff continues with complex rhythmic patterns and rests.

Handwritten musical notation for the fourth system. The treble staff features a *p* dynamic marking and a *ff* marking. The bass staff includes a *ff* marking and a *p* marking. The system concludes with a double bar line and a fermata over the final notes.

16 8.7 *tempo*

pp

pp

p

w

17

mf

f

Handwritten musical score for the first system. It consists of two systems of staves. The top system has a treble clef staff with a whole rest followed by a melodic line of eighth notes with accidentals (F#4, G4, A4, B4, C5, B4, A4, G4, F#4). Below it is a bass clef staff with a whole rest. The bottom system has a grand staff (treble and bass clefs). The treble clef staff contains a melodic line starting with a whole rest, followed by notes G4, F#4, E4, D4, C4, and a half note B3 with an accent (^) and a slur. The bass clef staff contains a complex accompaniment with slurs and ties, including notes like G3, F#3, E3, D3, C3, and B2.

Handwritten musical score for the second system. It consists of two systems of staves. The top system has a treble clef staff with a melodic line of eighth notes (G4, F#4, E4, D4, C4, B3, A3, G3) and a circled measure number '18' at the end. Below it is a bass clef staff with a melodic line of eighth notes (G3, F#3, E3, D3, C3, B2, A2, G2). The bottom system has a grand staff. The treble clef staff has notes G4, F#4, E4, D4, C4, B3, A3, G3. The bass clef staff has notes G3, F#3, E3, D3, C3, B2, A2, G2. There are various slurs and ties throughout the system.

Handwritten musical score for the first system, measures 18-19. It consists of three staves: Treble, Treble, and Bass clefs. The music features complex chordal textures and melodic lines with slurs and accents.

Handwritten musical score for the second system, measures 20-21. It consists of three staves: Treble, Treble, and Bass clefs. Measure 21 is marked with a circled '19' in the top right corner. The music includes a large slur across the bottom two staves in measure 21.

Handwritten musical score for measures 17-18. The system includes a treble clef staff with a key signature of three flats and a 3/4 time signature. The bass clef staff has a key signature of two flats. The piano part features a treble clef with a key signature of one sharp and a bass clef with a key signature of two flats. A large slur covers the first two measures.

Handwritten musical score for measures 19-20. The system includes a treble clef staff with a key signature of three flats and a 3/4 time signature. The bass clef staff has a key signature of two flats. The piano part features a treble clef with a key signature of one sharp and a bass clef with a key signature of two flats. A large slur covers the first two measures. A circled number "20" is in the top right corner.



(20)

(21)

(22)

Handwritten musical notation at the bottom left of the page.

ORCH



26

27

27

Handwritten musical score for measures 27-28. The score is written on four staves. The top staff is in treble clef, the second in alto clef, and the bottom two are in bass clef. Measure 27 begins with a piano (p) dynamic marking. The music features a melodic line in the treble clef with a trill-like figure, and a bass line with a steady eighth-note accompaniment. Measure 28 continues the melodic and accompanimental patterns, ending with a fermata-like flourish.

28

Handwritten musical score for measures 29-30. The score is written on four staves. The top staff is in treble clef, the second in alto clef, and the bottom two are in bass clef. Measure 29 begins with a forte (f) dynamic marking. The melodic line in the treble clef continues with a similar trill-like figure, while the bass line maintains the eighth-note accompaniment. Measure 30 concludes the passage with a final flourish and a fermata-like ending.

Handwritten musical score for the first system, measures 27-28. The system consists of four staves. The top staff is a vocal line in G major, with lyrics "duin" written below it. The second staff is a piano line with chords. The third and fourth staves are for cello and bass, with notes and slurs. The measure numbers 27 and 28 are written at the beginning of the system.

Handwritten musical score for the second system, measures 29-30. The system consists of four staves. The top staff is a vocal line in G major, with lyrics "duin" written below it. The second staff is a piano line with rests. The third and fourth staves are for cello and bass, with notes and slurs. The measure numbers 29 and 30 are written at the beginning of the system. A circled "29" is in the top right corner.

Handwritten musical score for the first system. It consists of three staves. The top staff is a piano part with chords and a dynamic marking of *pp* in a circle. The middle staff is a violin part with a melodic line and a dynamic marking of *f*. The bottom staff is a violin part with sustained notes and a dynamic marking of *p* in a circle. A handwritten instruction *completa cresc... →* with an arrow points from the piano staff to the violin staff.

Handwritten musical score for the second system. It consists of three staves. The top staff is a piano part with chords and a dynamic marking of *f*. The middle staff is a violin part with a melodic line and a dynamic marking of *f*. The bottom staff is a violin part with sustained notes and a dynamic marking of *f*. A handwritten instruction *8* is written above the violin staff.

Handwritten musical score for page 30, measures 1-2. The score is written on five staves. The top staff contains a melodic line with slurs and accents. The second staff contains a piano accompaniment with chords and slurs. The third and fourth staves are empty. The fifth staff contains a bass line with notes and rests.

Handwritten musical score for page 31, measures 1-2. The score is written on five staves. The top staff contains a melodic line with slurs and accents. The second staff contains a piano accompaniment with chords and slurs. The third and fourth staves are empty. The fifth staff contains a bass line with notes and rests.



Handwritten musical score for the first system. It consists of three staves: a treble clef staff, a bass clef staff, and a grand staff (treble and bass clefs). The treble staff contains a melodic line with a sharp key signature and a slur over the first two measures. The bass staff contains a lower melodic line with a slur over the first two measures. The grand staff contains a piano accompaniment with chords and moving lines. There are some handwritten annotations, including a '77' in the treble staff and a '7' in the bass staff.

Handwritten musical score for the second system, continuing the notation from the first system. It features the same three-staff structure. The melodic lines in the treble and bass staves continue with similar rhythmic patterns and accidentals. The grand staff accompaniment also continues. There are some handwritten annotations, including a '74' in the bass staff and a '7' in the treble staff.

Four empty musical staves at the bottom of the page, consisting of two grand staves (treble and bass clefs) and two individual staves.

hart

[31]

Handwritten musical score for the first system, measures 31-32. The score is written on a grand staff with treble and bass clefs. The right hand has a melodic line with slurs and accents, while the left hand plays a rhythmic accompaniment. A handwritten '8' is above the first measure, and a 'piano' marking is in the second measure.

Handwritten musical score for the second system, measures 33-34. The score is written on a grand staff with treble and bass clefs. The right hand has a melodic line with slurs and accents, while the left hand plays a rhythmic accompaniment. A handwritten '8' is above the first measure, and a 'piano' marking is in the second measure. A box containing the number '32' is in the top right corner.

Handwritten musical score for the first system, measures 32-33. The system consists of two staves: a treble clef staff and a bass clef staff. The treble staff contains a melodic line with slurs and accents. The bass staff contains accompaniment with chords and slurs. The key signature has two sharps (F# and C#). The notation includes slurs, accents, and dynamic markings like 'p' and 'pp'.

Handwritten musical score for the second system, measures 34-35. The system consists of two staves: a treble clef staff and a bass clef staff. The treble staff contains a melodic line with slurs and accents. The bass staff contains accompaniment with chords and slurs. The key signature has two sharps (F# and C#). The notation includes slurs, accents, and dynamic markings like 'p', 'pp', 'f', and 'p'. There are handwritten annotations 'din' and 'großes rit. ... + din'.

[33] Sehr ruhig (Andante)

S  
C

4/4 pp

34

S  
C

4/4

dinn

35

rit... pp

Adagio

Handwritten musical score for measures 35-36. The score is written for piano and orchestra. The piano part consists of two staves, and the orchestra part consists of two staves. The piano part has a melodic line with slurs and dynamics like *pp* and *p*. The orchestra part has a bass line with slurs and dynamics like *pp*. There are handwritten annotations like "großes rit." and a circled "8" above the piano staff.

*tempo accel + cresc. →*

Handwritten musical score for measures 37-38. The score is written for piano and orchestra. The piano part consists of two staves, and the orchestra part consists of two staves. The piano part has a melodic line with slurs and dynamics like *pp*. The orchestra part has a bass line with slurs and dynamics like *f*. There are handwritten annotations like "pp" and "f".

Handwritten musical score for measures 39-40. The score is written for piano and orchestra. The piano part consists of two staves, and the orchestra part consists of two staves. The piano part has a melodic line with slurs and dynamics like *f*. The orchestra part has a bass line with slurs and dynamics like *f*. There are handwritten annotations like "f".

Allegro — accel — bis Presto

39

40

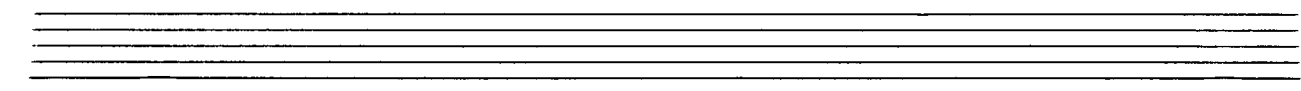
41

PRESTO

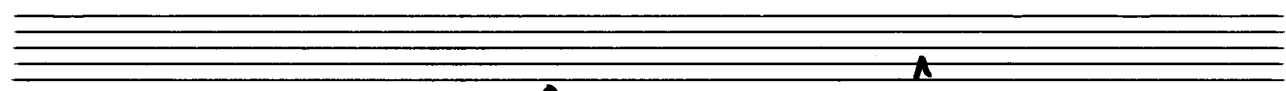
Handwritten musical score for the first system, marked "PRESTO". It features a treble clef with a key signature of one sharp (F#) and a common time signature. The notation includes a melodic line with slurs and a piano accompaniment with dense chords and arpeggios. The system is divided into two measures by a vertical bar line.

Handwritten musical score for the second system, continuing the piece. It features a treble clef with a key signature of one sharp (F#) and a common time signature. The notation includes a melodic line with slurs and a piano accompaniment with dense chords and arpeggios. The system is divided into two measures by a vertical bar line. A circled number "42" is written at the end of the second measure.

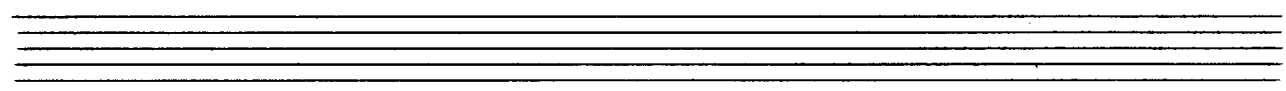




Handwritten musical score for the first system. It consists of four staves: two for the right hand (treble clef) and two for the left hand (bass clef). The music is in a key with one sharp (F#) and a 3/4 time signature. The notation includes various notes, rests, and dynamic markings such as accents (^) and hairpins (<math>\langle \rangle</math>). There are also some handwritten annotations above the staves, possibly indicating fingerings or articulation.



Handwritten musical score for the second system, continuing from the first. It features the same four-staff layout. The notation includes more complex rhythmic patterns, including sixteenth notes and rests. There are several dynamic markings and accents. At the end of the system, there is a double bar line followed by the word "LANGE" written vertically. The page concludes with a double bar line and a fermata-like symbol.



ADAGIO

Handwritten musical notation for the first system. It consists of two staves. The left staff is marked 'SOP' and the right 'SOB'. The music is in 6/8 time and begins with a piano (*pp*) dynamic. The right hand features a melodic line with slurs and a fermata over the final note. The left hand provides harmonic support with chords and a triplet of eighth notes.

Handwritten musical notation for the second system. It consists of two staves. The right hand has a melodic line with a first ending bracket labeled '1' over the final two notes. The left hand has a bass line with a forte (*f*) dynamic marking. The system concludes with a fermata over the final note in both hands.

Handwritten musical notation for the third system. It consists of two staves. The right hand has a melodic line with a second ending bracket labeled '2' over the final two notes. The left hand features a triplet of eighth notes. The system concludes with a fermata over the final note in both hands.

Handwritten musical notation for the first system. It consists of two staves. The top staff is in treble clef with a 4/4 time signature and a piano (*pp*) dynamic marking. It contains a triplet of eighth notes in the first measure, followed by several measures of eighth and sixteenth notes. The bottom staff is in bass clef and contains a half note in the first measure and a quarter note in the second measure.

Handwritten musical notation for the second system. It consists of two staves. The top staff continues with eighth notes in the treble clef. The bottom staff continues with a half note followed by a quarter note in the bass clef. The system ends with a circled number 3.

Handwritten musical notation for the third system. It consists of two staves. The top staff is in treble clef with a forte (*f*) dynamic marking and a triplet of eighth notes. The bottom staff is in bass clef and contains a half note followed by a quarter note.

Handwritten musical notation for the fourth system. It consists of two staves. The top staff is in treble clef with a triplet of eighth notes. The bottom staff is in bass clef and contains a half note followed by a quarter note. The word "din" is written above the first measure, and "rit..." is written below the last measure. The system ends with a boxed number 4.

*Sehr ruhig*

Handwritten musical score for the first system, marked with a circled '5' in the top left. The system consists of three staves: two for the piano (treble and bass clefs) and one for the orchestra (treble clef). The piano part features a complex, rapid sixteenth-note passage in both hands, with a fermata over the final notes. The orchestra part shows a melodic line with a fermata. A 'cresc.' marking with an arrow is present in the orchestra staff.

Handwritten musical score for the second system, marked with a circled '6' in the top right. The system consists of three staves: two for the piano (treble and bass clefs) and one for the orchestra (treble clef). The piano part continues with the rapid sixteenth-note passage, including a triplet of sixteenth notes. The orchestra part features a melodic line with a fermata. Dynamics markings include 'f' and 'ff' in the piano part, and 'f' in the orchestra part.

Handwritten musical score for the first system, measures 1-2. It features a treble and bass clef staff with a 4/4 time signature and a key signature of one sharp (F#). The first measure contains a whole note chord with an accent (^) and a downward bow stroke (v). The second measure contains a whole note chord with an accent (^). The piano part in the lower system has a melodic line in the right hand and a rhythmic accompaniment in the left hand.

Handwritten musical score for the second system, measures 3-4. Measure 3 is marked with a square box containing the number 2. The piano part continues with a melodic line in the right hand and a rhythmic accompaniment in the left hand. Measure 4 contains dynamic markings: "fff" with an accent (^) and "pp" with an accent (^).

Handwritten musical score for the first system. The treble clef staff begins with a piano (*pp*) dynamic marking. It contains a series of notes with a slur over them, followed by a rest and then more notes. The bass clef staff has a few notes and rests. The key signature has one sharp (F#).

Handwritten musical score for the second system. It starts with an accent (^) and the instruction *cresc...*. The treble clef staff has a long note with an accent, followed by a rest and then more notes. The bass clef staff has notes and rests. The key signature has one sharp (F#).

Handwritten musical score for the third system. It features a wavy line above the treble clef staff. The instruction *cresc??* is written above the staff. The treble clef staff has notes with accents and slurs. The bass clef staff has notes and rests. The key signature has one sharp (F#).

Handwritten musical score for the fourth system. It starts with the instruction *steigend* and an arrow pointing right. The treble clef staff has chords with accents and slurs. The bass clef staff has chords and notes. A boxed number '8' is written at the end of the system. The key signature has one sharp (F#).

(keltig)

PRESTO

8R

9

10



wieder (oder breit)

Handwritten musical score for the first system, measures 77-80. The system consists of three staves: Treble Clef (top), Bass Clef (middle), and Grand Staff (bottom). Measure 77 is marked with a fermata and the instruction "pesante". Above the Treble staff, there are notes with a bracket and the number "8". The Grand Staff shows a melodic line in the right hand and a chordal accompaniment in the left hand.

Handwritten musical score for the second system, measures 81-84. The system consists of three staves: Treble Clef (top), Bass Clef (middle), and Grand Staff (bottom). Measure 81 is marked with a fermata. Above the Treble staff, there are notes with a bracket and the number "8". The Grand Staff shows a melodic line in the right hand and a chordal accompaniment in the left hand.

(12)

(13)

13

O R C H.

pp

14

pp

15

16

pmp

16

pp cresc...

17

mf cresc..

f

best

18

sehr breit -

ORCHESTER

Handwritten musical score for measures 20-21. The system includes staves for Oboe (O), Clarinet (C), Horn (H), and Bassoon (B). Measure 20 features a complex texture with many accidentals and a large slur. Measure 21 continues the texture with various articulations and dynamics.

Handwritten musical score for measures 22-23. The system includes staves for Solo Violin (S) and Solo Viola (V). Measure 22 is marked "pesante" and "frei" (ad libitum). Measure 23 includes the instruction "gr. rit... + dim....." (grand ritardando... and diminuendo). The notation includes slurs, accents, and dynamic markings.

Handwritten musical score for measures 24-25. The system includes staves for Violin (V) and Viola (V). Measure 24 features a series of chords and a dynamic marking "dim". Measure 25 includes a large slur and a dynamic marking "dim". The system concludes with a double bar line.

SO RUHIG ALS MÖGLICH

24

Handwritten musical score for measures 24-25. The score is written on four staves. The top two staves are for strings (S O) and the bottom two are for woodwinds (O R CH). The notation includes various notes, rests, and dynamic markings like 'ppp' and 'p'. There are also handwritten annotations such as '(frei)' and 'rit...'.

25

Handwritten musical score for measures 25-26. The score is written on four staves. The top two staves are for strings (S O) and the bottom two are for woodwinds (O R CH). The notation includes various notes, rests, and dynamic markings like 'ppp' and 'p'. There are also handwritten annotations such as 'rit...' and 'pizzicato'.

Prestissimo

Handwritten musical notation for the first system of a Prestissimo piece. It features a grand staff with treble and bass clefs. The music is written in a key with three sharps (F#, C#, G#) and a 4/4 time signature. The notation includes various note values, rests, and dynamic markings such as accents (^) and hairpins (<math>\hat{</math>). A circled number '1' is in the top right corner.

Handwritten musical notation for the second system. It continues the grand staff notation with treble and bass clefs. The key signature changes to two flats (Bb, Eb). The notation includes slurs, accents, and dynamic markings. A circled number '2' is in the top right corner.

Handwritten musical notation for the third system. It continues the grand staff notation with treble and bass clefs. The key signature changes to one flat (Bb). The notation includes slurs, accents, and dynamic markings. A circled number '3' is in the top right corner.

Handwritten musical notation for the fourth system. It continues the grand staff notation with treble and bass clefs. The key signature changes to no sharps or flats (C major). The notation includes slurs, accents, and dynamic markings. A circled number '4' is in the top right corner.



[4] (hart)

Handwritten musical score for the first system, measures 1-4. The notation includes a grand staff with treble and bass clefs. The first two staves are empty. The third staff (treble clef) contains a melodic line with notes and rests. The fourth staff (bass clef) contains a bass line with notes and rests. Handwritten annotations include 'p' in a circle, 'dim', and various dynamic markings like 'f' and 'p'.

Handwritten musical score for the second system, measures 5-8. The notation includes a grand staff with treble and bass clefs. The first staff (treble clef) contains a melodic line with notes and rests. The second staff (treble clef) contains a bass line with notes and rests. The third and fourth staves (bass clef) contain a bass line with notes and rests. Handwritten annotations include 'p' in a circle, 'dim', and various dynamic markings like 'f' and 'p'.

Handwritten musical score for the first system, measures 1-3. It features three staves: two treble clefs and one grand staff. The first treble staff has a melodic line with slurs and dynamics *mf* and *f*. The second treble staff has a simpler melodic line. The grand staff has a bass line with slurs and dynamics *mf* and *f*.

Handwritten musical score for the second system, measures 4-6. It features three staves: two treble clefs and one grand staff. The first treble staff has a melodic line with slurs and dynamics *f*. The second treble staff has a bass line with slurs and dynamics *f*. The grand staff has a bass line with slurs and dynamics *f*. A box containing the number "10" is in the top right corner.

Handwritten musical score for the first system. It consists of two staves: a treble clef staff on top and a bass clef staff on the bottom. The treble staff contains a melodic line with eighth and sixteenth notes, some with slurs and accents. The bass staff contains a bass line with dotted notes and rests. There are some handwritten annotations, including a sharp sign (#) and a 'p' (piano) marking.

Handwritten musical score for the second system. It consists of two staves: a treble clef staff on top and a bass clef staff on the bottom. The treble staff has several measures with notes and rests, including dynamic markings like 'p' (piano) and 'pp' (pianissimo). There are also some handwritten annotations, including a circled measure number '12' and a 'p' marking. The bass staff contains a bass line with notes and rests.

**Solo**

13)

14]

**FR**

13)

13)

16

Handwritten musical score for measures 16-17. The score consists of three systems of staves. The first system has two treble clef staves and one bass clef staff. The second system has two treble clef staves and one bass clef staff. The third system has one treble clef staff and one bass clef staff. The music includes various notes, rests, and dynamic markings such as 'fp' and 'p'.

17

Handwritten musical score for measures 18-20. The score consists of three systems of staves. The first system has two treble clef staves and one bass clef staff. The second system has two treble clef staves and one bass clef staff. The third system has one treble clef staff and one bass clef staff. The music includes various notes, rests, and dynamic markings such as 'f'.

18

Handwritten musical score for measures 18-20. The score consists of three staves. The top two staves are in treble clef, and the bottom staff is in bass clef. The first two staves begin with a forte (*f*) dynamic marking. The notation includes various chords, some with accents (^) and slurs. The bottom staff has "pizz" and "H" markings. A fermata is present over the final measure of the system.

19

Handwritten musical score for measure 19. The score consists of two staves: a treble clef and a bass clef. The treble staff has a forte (*f*) dynamic marking and the word "SOSO" written vertically on the left. The bass staff has a "pizz" marking. The notation includes chords and a fermata over the final measure.

20

Handwritten musical score for measure 20. The score consists of two staves: a treble clef and a bass clef. The treble staff has a forte (*f*) dynamic marking. The notation includes chords and a fermata over the final measure.

20

ORCH

21

22

23

24



25

ORCH

großes rit  
(TROMMEL Solo)

pp. rit.....

breit (ADAGIO)

26

27

Handwritten musical score for two staves. The top staff is in treble clef and contains several chords with stems pointing upwards, some marked with a circled 'p' (piano). The bottom staff is in bass clef and contains chords with stems pointing downwards. A vertical bar line is present between the two systems.

Handwritten musical score for two staves. The top staff is in treble clef and contains a melodic line with a circled '28' above it. The bottom staff is in bass clef and contains chords. A circled 'f' (forte) is written below the bottom staff. A vertical bar line is present between the two systems.

Handwritten musical score for two staves. The top staff is in treble clef and contains a melodic line with a circled '29' above it. The bottom staff is in bass clef and contains chords, including a triplet marked with a '3'. A vertical bar line is present between the two systems.

Handwritten musical score system 1. It consists of two staves. The upper staff is in treble clef and contains a series of chords with a triplet of eighth notes in the first measure. The lower staff is in bass clef and contains a series of chords. A large slur covers the entire system. The dynamic marking *pp* is written in the first measure of the upper staff.

Handwritten musical score system 2. It consists of two staves. The upper staff is in treble clef and contains a series of chords. The lower staff is in bass clef and contains a series of chords. A large slur covers the entire system. A circled number **30** is written in the top right corner of the system.

Handwritten musical score system 3. It consists of two staves. The upper staff is in treble clef and contains a series of chords with various accidentals. The lower staff is in bass clef and contains a series of chords. A large slur covers the entire system. The dynamic marking *mf* is written in the first measure of the upper staff.

Handwritten musical score system 4. It consists of two staves. The upper staff is in treble clef and contains a series of chords with various accidentals. The lower staff is in bass clef and contains a series of chords. A large slur covers the entire system. The dynamic marking *dim* is written in the first measure of the upper staff. The dynamic marking *pp* is written in the third measure of the upper staff. A circled number **31** is written in the top right corner of the system.

Handwritten musical score for measures 31-32. The score is written on four staves. The top two staves are for the right hand, and the bottom two are for the left hand. Measure 31 features a piano (pp) dynamic and a 'ppp' marking. Measure 32 shows a crescendo and a 'cresc.' marking. The notation includes various notes, rests, and dynamic markings.

Handwritten musical score for measures 33-34. The score is written on four staves. The top two staves are for the right hand, and the bottom two are for the left hand. Measure 33 features a piano (pp) dynamic. Measure 34 shows a crescendo and a 'cresc.' marking. The notation includes various notes, rests, and dynamic markings.

Handwritten musical score for page 33. The score is written on five staves. The top two staves are for the piano, with a brace on the left. The bottom three staves are for the violin, with a brace on the left. The music includes various notes, rests, and dynamic markings such as 'f' (forte) and 'mf' (mezzo-forte). There are also some handwritten annotations and a fermata over a note in the violin part.

Handwritten musical score for page 34. The score is written on five staves. The top two staves are for the piano, with a brace on the left. The bottom three staves are for the violin, with a brace on the left. The music includes various notes, rests, and dynamic markings such as 'f' (forte) and 'mf' (mezzo-forte). There are also some handwritten annotations and a fermata over a note in the violin part.

35

36

37

*accel.*

Handwritten musical score for the first system, measures 37-38. The top staff has a circled '37' and the bottom staff has a circled '38'. The music features complex chords and melodic lines with various accidentals and dynamics.

*accel?* .....  
*Allegro* → *accel.*

Handwritten musical score for the second system, measures 39-40. The top staff has a circled '39' and the bottom staff has a circled '40'. The music includes a dynamic marking 'f' and a tempo change from Allegro to accel.

Handwritten musical score for the third system, measures 41-42. The top staff has a circled '41' and the bottom staff has a circled '42'. The music continues with complex harmonic structures.

**PRESTISSIMO**

*hart (stacc)*

Handwritten musical score for the fourth system, measures 43-44. The top staff has a circled '43' and the bottom staff has a circled '44'. The music is marked 'PRESTISSIMO' and 'hart (stacc)'. It features a triplet in the right hand and a complex bass line.

Tempo I. (Prestissimo)

(21)

(22)

(23)

(24)



Handwritten musical score for measures 75-76. The system consists of two staves. The upper staff is in treble clef and contains a melodic line with a slur over measures 75 and 76, and a fermata over the final note. The lower staff is in bass clef and contains a bass line with a slur over measures 75 and 76. Handwritten annotations include "hant" above the first measure and "77" above the second measure. There are various accidentals (flats, naturals) and articulation marks (accents, slurs) throughout.

Handwritten musical score for measures 77-80. The system consists of two staves. The upper staff is in treble clef and contains a melodic line with a slur over measures 77 and 78, and a fermata over the final note. The lower staff is in bass clef and contains a bass line with a slur over measures 77 and 78. Handwritten annotations include "77" above the first measure and "78" above the second measure. There are various accidentals and articulation marks.

Handwritten musical score for measures 81-84. The system consists of two staves. The upper staff is in treble clef and contains a melodic line with a slur over measures 81 and 82, and a fermata over the final note. The lower staff is in bass clef and contains a bass line with a slur over measures 81 and 82. Handwritten annotations include "79" above the first measure and "80" above the second measure. There are various accidentals and articulation marks.

Handwritten musical score for measures 85-88. The system consists of two staves. The upper staff is in treble clef and contains a melodic line with a slur over measures 85 and 86, and a fermata over the final note. The lower staff is in bass clef and contains a bass line with a slur over measures 85 and 86. Handwritten annotations include "81" above the first measure and "82" above the second measure. There are various accidentals and articulation marks.

Handwritten musical score for measures 48-51. The score consists of three staves. The top two staves are treble clefs, both containing rests with 'pffft' markings above them. The bottom staff is a grand staff (treble and bass clefs) containing a melodic line with notes and a bass line with chords. Dynamics include 'pffft', 'ff', and 'dim'.

Handwritten musical score for measures 52-55. The score consists of three staves. The top two staves are treble clefs, both containing melodic lines with notes and slurs. The bottom staff is a grand staff (treble and bass clefs) containing a bass line with notes and slurs. Dynamics include 'p'.

Handwritten musical score for the first system, measures 48-49. It features three staves: two treble clefs and one grand staff. The top staff has a melodic line with a slur and a fermata. The middle staff has a simpler melodic line. The bottom staff has a bass line with a slur and a fermata. Dynamics include 'mf' and 'f'.

50

Handwritten musical score for the second system, measures 50-52. It features three staves: two treble clefs and one grand staff. The top staff has a melodic line with slurs and accents. The middle staff has a bass line with slurs. The bottom staff has a bass line with slurs and a circled '5'. Dynamics include 'mf' and 'f'.



53

Handwritten musical score for measures 53. The top staff is in treble clef and contains a series of chords with various accidentals (flats and naturals) and some melodic lines. The bottom staff is in bass clef and contains a bass line with similar accidentals. The word "dim" is written above the second measure of the top staff.

54

Handwritten musical score for measures 54. The top staff is in treble clef and contains a series of chords with various accidentals (flats and naturals) and some melodic lines. The bottom staff is in bass clef and contains a bass line with similar accidentals. The word "dim" is written above the first measure of the top staff.

ORCH

Handwritten musical score for measures 55. The top staff is in treble clef and contains a series of chords with various accidentals (flats and naturals) and some melodic lines. The bottom staff is in bass clef and contains a bass line with similar accidentals. The word "P" is written in a circle above the first measure of the top staff.

55

Handwritten musical score for measures 56. The top staff is in treble clef and contains a series of chords with various accidentals (flats and naturals) and some melodic lines. The bottom staff is in bass clef and contains a bass line with similar accidentals.

56

Handwritten musical score for measures 56 and 57. The score is written on four staves. The top two staves are for the right hand, and the bottom two are for the left hand. Measure 56 shows a rest in the right hand and a complex chordal structure in the left hand. Measure 57 features a melodic line in the right hand and a sustained chord in the left hand. The key signature has two sharps (F# and C#). Dynamics include *fp* and *mf*. Performance markings include accents, slurs, and a circled 'p'.

57

Handwritten musical score for measures 58, 59, 60, and 61. The score is written on four staves. The top two staves are for the right hand, and the bottom two are for the left hand. Measure 58 shows a melodic line in the right hand and a chord in the left hand. Measure 59 continues the melodic line in the right hand. Measure 60 features a more complex melodic line in the right hand. Measure 61 shows a melodic line in the right hand and a chord in the left hand. The key signature has two sharps (F# and C#). Dynamics include *f*. Performance markings include slurs and accents.

Handwritten musical score for page 58. The score consists of three staves. The top staff is for the Violin (V), the middle for the Piano (P), and the bottom for the Piano (P22). The music is in a key with one flat (B-flat major or D minor). The top staff features a series of chords with accents (^) and slurs. The middle staff has a dynamic marking of **f** and a slur. The bottom staff has a dynamic marking of **ppz** and **f**, with a sharp sign (#) indicating a key change or accidentals. The score is divided into three measures.

Handwritten musical score for page 59. The score consists of two staves. The top staff is for the strings (S), with the instruction "hart (steigend)" written above it. The bottom staff is for the Piano (P). The music is in a key with one flat (B-flat major or D minor). The top staff features a series of chords with accents (^) and slurs. The bottom staff has a dynamic marking of **f** and a slur. The score is divided into three measures.

Handwritten musical score for page 60. The score consists of two staves. The top staff is for the strings (S) and the bottom for the Piano (P). The music is in a key with one flat (B-flat major or D minor). The top staff features a series of chords with accents (^) and slurs. The bottom staff has a dynamic marking of **f** and a slur. The score is divided into three measures.

Handwritten musical score for the first system. The top staff is in treble clef with a key signature of three sharps (F#, C#, G#) and a common time signature. It features a melodic line with triplets and accents. The middle staff shows a piano introduction with a complex chord structure. The bottom staff contains a bass line with chords and rhythmic markings.

Handwritten musical score for the second system. The top staff continues the melodic line with accents. The middle staff shows the piano introduction with a complex chord structure. The bottom staff contains a bass line with chords and rhythmic markings.



Handwritten musical score for the first system, measures 60-65. The piano part consists of a complex rhythmic pattern of eighth and sixteenth notes. The treble clef part features a melodic line with various ornaments and a circled '61' in the top right corner.

Handwritten musical score for the second system, measures 66-71. The piano part has a steady eighth-note accompaniment. The treble clef part features a melodic line with various ornaments. There are some scribbles in the piano part in the later measures.

Empty musical staves for the third system, measures 72-77.

Handwritten musical score for a piano and orchestra. The score is written on four staves. The word "LANGE" is written above the first staff. The notation includes various musical symbols such as notes, rests, and dynamic markings. The first staff has a treble clef and a key signature of one sharp (F#). The second staff has a treble clef and a key signature of one sharp (F#). The third and fourth staves have a grand staff (treble and bass clefs). The score ends with a double bar line and a hatched box on the right side. The word "LANGE" is written above the first staff. The word "LANGE" is written above the first staff. The word "LANGE" is written above the first staff.

Adolf Scherbaum