

NOTENHEFT

KONZERT

für Orchester

Josef Scherbaum



②

3

Handwritten musical notation for the first system. It features a treble clef, a key signature of one sharp (F#), and a 3/4 time signature. The notation includes a melodic line with a slur and a fermata, and a bass line with a circled '3' indicating a triplet. The system is divided into three measures.

Handwritten musical notation for the second system. It features a treble clef, a key signature of one sharp (F#), and a 3/4 time signature. The notation includes a melodic line with a slur and a fermata, and a bass line with a circled '3' indicating a triplet. The system is divided into three measures.

4

Handwritten musical score for system 4, measures 1-3. The system consists of four staves. The first staff is in treble clef and contains a melodic line with a slur over the first two measures and accents on the notes. The second staff is in treble clef and contains a melodic line with a slur over the first two measures. The third and fourth staves are grouped by a brace on the left and contain a bass line with a slur over the first two measures. The key signature has one sharp (F#) and the time signature is 4/4.

5

Handwritten musical score for system 5, measures 1-3. The system consists of four staves. The first staff is in treble clef and contains a melodic line with a slur over the first two measures. The second staff is in treble clef and contains a melodic line with a slur over the first two measures. The third and fourth staves are grouped by a brace on the left and contain a bass line with a slur over the first two measures. The key signature has one sharp (F#) and the time signature is 4/4.

Handwritten musical score for the first system, labeled with a circled '5' in the top left corner. The score consists of five staves:

- 3TR:** Treble clef, featuring a melodic line with eighth and sixteenth notes, some beamed together, and slurs.
- 44:** Treble clef, containing a single note with a circled '44' above it.
- 3Pos:** Bass clef, featuring a melodic line with eighth notes and slurs.
- Tuba:** Bass clef, containing a single note with a circled '44' above it.
- Banjo:** Bass clef, featuring a melodic line with eighth notes and slurs.

Vertical bar lines divide the music into measures. The circled numbers '5' and '44' likely indicate measure numbers or specific notes.

Handwritten musical score for the second system, labeled with a circled '6' in the top right corner. The score consists of five staves:

- 3TR:** Treble clef, featuring a melodic line with eighth and sixteenth notes, some beamed together, and slurs.
- 44:** Treble clef, containing a single note with a circled '44' above it.
- 3Pos:** Bass clef, featuring a melodic line with eighth notes and slurs.
- Tuba:** Bass clef, containing a single note with a circled '44' above it.
- Banjo:** Bass clef, featuring a melodic line with eighth notes and slurs.

Vertical bar lines divide the music into measures. The circled number '6' likely indicates the measure number.

Handwritten musical score for the first system, measures 3-5. The score is written on five staves. The first staff (treble clef) contains a melodic line with notes and rests, circled measure numbers 3, 4, and 5. The second staff (alto clef) has a few notes. The third staff (bass clef) has a few notes. The fourth and fifth staves (bass clef) contain a bass line with notes and rests. The music is in a key with one sharp (F#) and a 3/4 time signature.

Handwritten musical score for the second system, measures 6-8. The score is written on five staves. The first staff (treble clef) contains a melodic line with notes and rests, circled measure numbers 6, 7, and 8. The second staff (alto clef) has a few notes. The third staff (bass clef) has a few notes. The fourth and fifth staves (bass clef) contain a bass line with notes and rests. The music is in a key with one sharp (F#) and a 3/4 time signature.

SH
a3

3Fl.

3OB
Engl.

3Klar
in C

3Fg

3TR

4H

3Pos

Tuba

1V

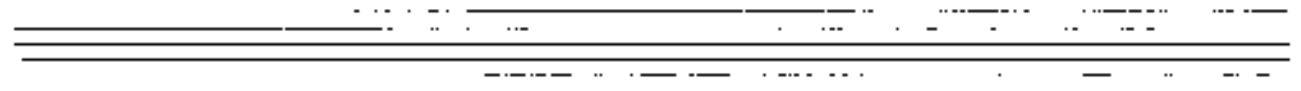
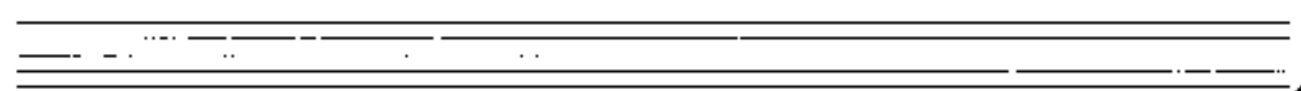
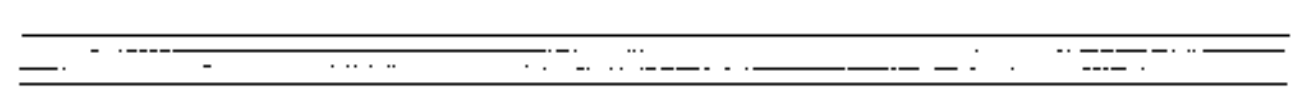
2V

Pn

Ch

Klar.
Solo

Ponono



10 *rubato*

Oboe Solo
2nd
1st

12

13

Handwritten musical score for a 12-measure piece, numbered 12 and 13. The score is written on ten staves. The first staff is a treble clef with a key signature of one sharp (F#). The second staff is a bass clef with a key signature of one sharp (F#). The third staff is a treble clef with a key signature of one sharp (F#). The fourth staff is a bass clef with a key signature of one sharp (F#). The fifth staff is a treble clef with a key signature of one sharp (F#). The sixth staff is a bass clef with a key signature of one sharp (F#). The seventh staff is a treble clef with a key signature of one sharp (F#). The eighth staff is a bass clef with a key signature of one sharp (F#). The ninth staff is a treble clef with a key signature of one sharp (F#). The tenth staff is a bass clef with a key signature of one sharp (F#). The score includes various musical notations such as notes, rests, slurs, and dynamic markings. There are also circled numbers 12 and 13, and a circled '42' in the bottom left corner. The piece concludes with a double bar line and a repeat sign.

53

A handwritten musical score consisting of approximately 12 staves. The notation includes various musical symbols such as clefs, notes, rests, and accidentals. Several notes and symbols are circled in black. A large horizontal line with a brace spans across the top of the score, starting from the second staff and extending to the right edge. The score is divided into measures by vertical bar lines. There are some handwritten annotations and markings, including a '1' and '2' on the left side of the lower staves, and some illegible text in the middle of the score.

Flute Solo *sabito* *p*

13

15

16

3 Fl.

17

18

3 Fl.

3 Fl.

3 Fl.

19

20

Handwritten musical score for a string quartet, consisting of four staves (Violin I, Violin II, Viola, and Cello/Double Bass). The score is written in treble clef with a key signature of one sharp (F#) and a common time signature (C). The notation includes various musical symbols such as notes, rests, slurs, and dynamic markings.

Key features of the score include:

- Staff 1 (Violin I):** Starts with a circled number 13. Contains a melodic line with slurs and a circled 'p' at the end.
- Staff 2 (Violin II):** Contains a melodic line with slurs and a circled 'p' at the end.
- Staff 3 (Viola):** Contains a melodic line with slurs and a circled 'p' at the end.
- Staff 4 (Cello/Double Bass):** Contains a melodic line with slurs and a circled 'p' at the end.
- Staff 5 (Cello/Double Bass):** Labeled 'Cello/Bass' on the left. Contains a bass line with slurs and a circled 'p' at the end.

Additional markings include circled numbers 13, 14, 15, 16, 17, 18, and 19, likely indicating measure numbers. The word 'din' is written above the first measure of the top staff. The word 'vars' is written above the second measure of the second staff. The word 'din' is written above the second measure of the fifth staff. The word 'din' is written below the second measure of the bottom staff. The word 'vars' is written below the second measure of the bottom staff. The word 'vars' is written below the second measure of the bottom staff.

Handwritten musical score for three staves (10B, 20B, 30B) and three grand staff staves. The notation includes notes, rests, and dynamic markings.

Staff 10B: *pp* (pianissimo), notes with a triplet of eighth notes.

Staff 20B: *pp* (pianissimo), notes with a triplet of eighth notes.

Staff 30B: *pp* (pianissimo), notes with a triplet of eighth notes.

Grand Staff 1 (top): *cresc. →* (crescendo), notes with a triplet of eighth notes.

Grand Staff 2 (middle): *cresc. →* (crescendo), notes with a triplet of eighth notes.

Grand Staff 3 (bottom): *cresc. →* (crescendo), notes with a triplet of eighth notes.

97

Handwritten musical score for three staves. The notation includes notes, rests, and circled markings.

Staff 1 (top): Notes with circled markings.

Staff 2 (middle): Notes with circled markings.

Staff 3 (bottom): Notes with circled markings.

19

20

Handwritten musical score for measures 19 and 20. The score consists of three staves. The top two staves have treble clefs and contain notes with accidentals (sharps and naturals). The bottom staff has a bass clef and contains notes with accidentals. A large brace spans across the first two staves.

21

Handwritten musical score for measures 21 and 22. The score consists of four staves labeled 3TR, 44, 3 Pos, and Tuba. Each staff has a treble clef. The music includes notes, rests, and accidentals. A large brace spans across the bottom two staves.

22

Handwritten musical score for measures 22 and 23. The score consists of three staves. The top two staves have treble clefs and contain notes with accidentals (flats and naturals). The bottom staff has a bass clef and contains notes with accidentals. A large brace spans across the first two staves.

Flute Solo *Meno* (23)

(24) *p*

Larghetto

Flute Solo (25)

(26)

(27) *p*

Solo ruhig (langsam)

27

26

Handwritten musical score for measures 26-27. The score is written on five staves: Oboe Solo, Violin I, Violin II, Bassoon, and Contrabass. The Oboe Solo part features a melodic line with slurs and accents, starting with a *pp* dynamic. The Violin I part has a circled *pp* dynamic. The Violin II part has a circled *pp* dynamic. The Bassoon part has a circled *pp* dynamic. The Contrabass part has a circled *pp* dynamic. The music is in a slow, steady tempo.

28

Handwritten musical score for measures 28-30. The score is written on five staves: Oboe Solo, Violin I, Violin II, Bassoon, and Contrabass. The Oboe Solo part features a melodic line with slurs and accents, starting with a *pp* dynamic. The Violin I part has a circled *pp* dynamic. The Violin II part has a circled *pp* dynamic. The Bassoon part has a circled *pp* dynamic. The Contrabass part has a circled *pp* dynamic. The music is in a slow, steady tempo.

29

29

30

Oboe

Panfl.

Kl. Transc.

(wie in Chord)

31

STR

Aplos

Tuba

32

33

Clarinet (Cl.)

Trumpet (Tr.)

4/4

pp

Solo Violin (Viol.)

Clarinet (Cl.)

Trumpet (Tr.)

pp

p

Violin (Viol.)

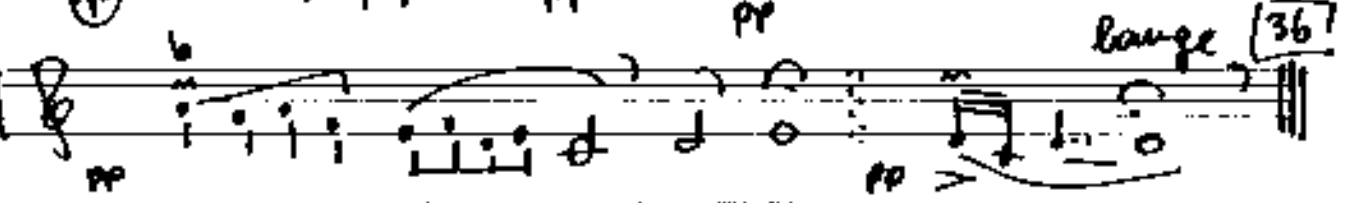
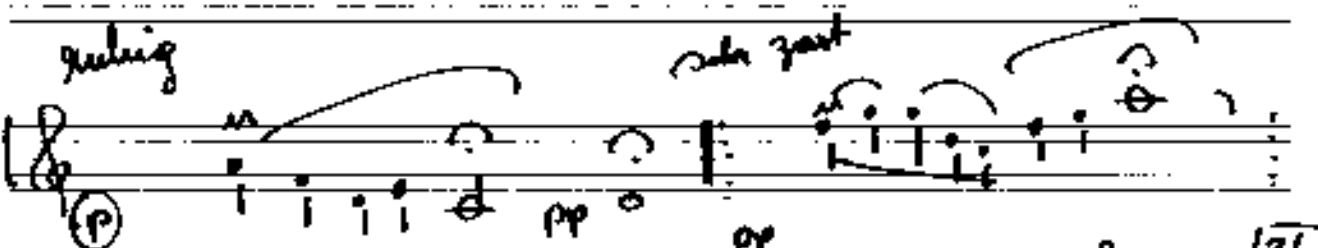
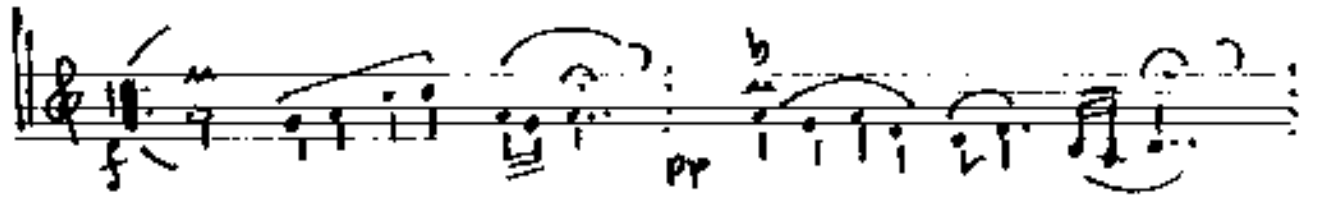
Clarinet (Cl.)

Trumpet (Tr.)

pp

p

34) (frei - sehr ruhig (Engl. horn Solo) richtig ruhig!



Idor langsame und ruhig -

1. V. *pp*

2. V. *p*

Br. *mf*

Cel. *pp*

39

37

38

pp So ruhig wie möglich
ausklingen lassen

39

Pedal:

ppp

ppp

40

ppp

ppp

FINE SATZ I.

II.

Sehr langsam (Andel)

Handwritten musical score for strings and harp. The score is written on five staves. The first four staves are for strings: 1V (Violin I), 2V (Violin II), Br (Viola), and ClB (Cello/Double Bass). The fifth staff is for the HARFE (Harp). The music is in a slow tempo, marked "Sehr langsam (Andel)".

The score includes the following details:

- 1V:** Treble clef, starting with a dynamic marking of *ppp*. A bracketed section contains a chord with notes G, A, B, C, D, E, F, G.
- 2V:** Treble clef, starting with a dynamic marking of *ppp*. A bracketed section contains a chord with notes G, A, B, C, D, E, F, G.
- Br:** Alto clef, starting with a dynamic marking of *ppp*. A bracketed section contains a chord with notes G, A, B, C, D, E, F, G.
- ClB:** Bass clef, starting with a dynamic marking of *ppp*. A bracketed section contains a chord with notes G, A, B, C, D, E, F, G.
- HARFE:** Treble clef, starting with a dynamic marking of *ppp*. The harp part includes a section labeled "solistisch" with a circled "W" below it. The harp part features a series of chords and arpeggios, with a circled "W" below the first section.

The score is marked with a circled "W" and a circled "A" in the top right corner.

VARIAT. (1)

3TR *p*
4H *pp*
3Pos *pp*
Tuba *pp*
Harfe *pp*

2

3TR *p*
4H *p*
3Pos *p*
Tuba *p*
Harfe *p*

3

VAR. (2)

oda quart

3

4

Handwritten musical score for a quartet, measures 3 and 4. The score includes staves for 1st Flute, 2nd Flute (Piccolo), 3rd Flute, 1st Oboe, 2nd Oboe, 3rd Oboe, 1st Clarinet, 2nd Clarinet, and 3rd Clarinet. Measures 3 and 4 are marked with 'ppp' and contain complex melodic and harmonic notation.

VAR. ②

Oboe ① *pp* *zacht*

VAR. ④

1+2 Flute *pp*

Pica *pp* *poco rit.*

1+2+3 Oboe *pp*

1+2 Clar. *pp*

3 Fag. *pp* *poco rit.* *cresc.*

27

7 subito (pesante)

8

molto Breit.....

sub.

Pauze Solo (hart.....)

10

Handwritten musical score for system 11. It consists of four staves. The top two staves are in treble clef, and the bottom two are in bass clef. The key signature has one sharp (F#). The music features various note values, including quarter and eighth notes, and rests. There are several slurs and ties across the staves.

Handwritten musical score for system 12. It consists of four staves. The top staff is in treble clef, and the bottom three are in bass clef. The key signature has one sharp (F#). The music includes a 'pizz.' (pizzicato) marking with a downward arrow. There are complex rhythmic patterns, including sixteenth notes and slurs. A circled '12' is present in the bottom left corner of the system.

Punkte Solo

Handwritten musical score for system 13. It consists of a single staff in treble clef with a key signature of one sharp (F#). The notation is primarily rhythmic, using vertical lines and stems to represent notes. A circled '13' is in the top right, and the word 'Punkte' is written at the bottom right.

(reda zant) VAR. (6)

(14)

Handwritten musical score for measures 14-15. The system includes three staves: Treble clef (14B), Alto clef (20B), and Bass clef (30B). The music features complex rhythmic patterns with many beamed notes and rests. Dynamics include *pp* (pianissimo) and *ppp* (pianississimo). A circled measure number '14' is at the end of the system.

Handwritten musical score for measures 16-17. The system includes three staves: Treble clef (14B), Alto clef (20B), and Bass clef (30B). The music continues with complex rhythmic patterns and beamed notes. Dynamics include *pp* and *ppp*. A circled measure number '14' is at the end of the system.

Handwritten musical score for measures 18-19. The system includes three staves: Treble clef (14B), Alto clef (20B), and Bass clef (30B). The music features complex rhythmic patterns with many beamed notes and rests. Dynamics include *pp* and *ppp*. A circled measure number '15' is at the end of the system.

15

VAR. 7

3

Handwritten musical score for a symphony orchestra, including parts for Flute (Fl.), Oboe (Ob.), Clarinet (Cl.), Bassoon (Fg.), Violin (V), Viola (V), Cello (Cb.), and Double Bass (Cb.). The score is written in a single system with multiple staves. The music is in 4/4 time and features a variety of dynamics, including *ppp* (pianissimo) and *mf* (mezzo-forte). The Flute part has a circled '3' above it. The Oboe part has a circled '3' above it. The Clarinet part has a circled '3' above it. The Bassoon part has a circled '3' above it. The Violin part has a circled 'ppp' above it. The Viola part has a circled 'ppp' above it. The Cello part has a circled 'ppp' above it. The Double Bass part has a circled 'ppp' above it. The score includes various musical notations such as notes, rests, and dynamic markings.

16

VAR. 8

The image shows a handwritten musical score for a piano piece, labeled '16' and 'VAR. 8'. The score is written on a grand staff consisting of five staves. The top staff is a treble clef staff containing a melodic line with various notes, rests, and slurs. The lower four staves are grouped by a brace on the left and contain sustained chords or block chords. The score is divided into two measures by a vertical bar line. There are some handwritten annotations and markings throughout the score, including a circled 'pp' in the first measure of the treble staff and a circled 'p' in the first measure of the grand staff.

Klar. Solo *pp*

STR. *pp*

4H *pp*

3Pos *pp*

Tub *pp*

Klar. Solo *pp*

breit

pp out...

relax breit und stark VAR 9

29

Handwritten musical score for a string quartet, featuring staves for Violin I (V), Violin II (2V), Viola (B), and Cello/Double Bass (Cb). The score includes musical notation, dynamics, and performance instructions.

Key elements of the score:

- Violin I (V):** Starts with a circled '3' and a dynamic marking of mf . The notation includes a melodic line with slurs and accents.
- Violin II (2V):** Starts with a circled '3' and a dynamic marking of mf . The notation includes a melodic line with slurs and accents.
- Viola (B):** Starts with a circled '3' and a dynamic marking of mf . The notation includes a melodic line with slurs and accents.
- Cello/Double Bass (Cb):** Starts with a circled '2' and a dynamic marking of mf . The notation includes a melodic line with slurs and accents.
- Violoncello (Cb):** A circled '3' is placed above the staff, with a dynamic marking of mf and a circled '3' to its right. The notation includes a melodic line with slurs and accents.
- Violoncello (Cb):** A circled '3' is placed above the staff, with a dynamic marking of mf and a circled '3' to its right. The notation includes a melodic line with slurs and accents.
- Violoncello (Cb):** A circled '3' is placed above the staff, with a dynamic marking of mf and a circled '3' to its right. The notation includes a melodic line with slurs and accents.
- Violoncello (Cb):** A circled '3' is placed above the staff, with a dynamic marking of mf and a circled '3' to its right. The notation includes a melodic line with slurs and accents.

3
|||