

1390



Notenheft



F (14) Teile

für Klavier —

(prepariertes Klavier)

(mit Holz oder Pergament) in den Saiten)

und mit interlegtem Text)

nach verschiedenen Gedichten
afrikanischer Autoren

Erkausehe mit geschwind -
Die Wesen in den Dingen -
Hör sie in Feuer singen

Teil 1

leuto

pp 3/4
Pedal bis

Hör sie im Wasser mahnen
Und lausche in den Wind!

Der Seufzer im Gebüsch — Das ist der Hauch der Auen.

Handwritten musical notation for the first system. The treble staff contains two quarter notes (G4 and A4) followed by two rests. The bass staff contains three quarter notes (F3, G3, A3) followed by two rests. A bracket spans the first two measures of both staves.

Handwritten musical notation for the second system. The treble staff contains two quarter notes (G4 and A4) followed by a quarter note (B4) and a rest. The bass staff contains two quarter notes (F3 and G3) followed by a quarter note (A3) and a rest. A bracket spans the first two measures of both staves.

Handwritten musical notation for the third system. The treble staff contains a quarter note (G4), a quarter note (A4), and two quarter notes (B4 and C5). The bass staff contains two quarter notes (F3 and G3) followed by two quarter notes (A3 and B3). A bracket spans the first two measures of both staves.

Handwritten musical notation for the fourth system. The treble staff contains a quarter note (G4), a quarter note (A4), and two quarter notes (B4 and C5). The bass staff contains two quarter notes (F3 and G3) followed by two quarter notes (A3 and B3). A bracket spans the first two measures of both staves. The system concludes with a circled 'rit' marking, a fermata, and a circled 'Fine' marking. The bass staff has some additional markings including 'ppp' and a sharp sign.

Teil ① #

Presto

Handwritten musical notation for the first system of 'Teil ① #'. It consists of two staves. The top staff is in treble clef with a circled sharp sign (#) indicating the key signature. The bottom staff is in bass clef. The first measure contains a melodic line in the treble and a bass line with a '44' marking. The next three measures contain rests in both staves.

Handwritten musical notation for the second system of 'Teil ① #'. It consists of two staves. The top staff is in treble clef and the bottom staff is in bass clef. The first measure contains a melodic line in the treble and a bass line with a '44' marking. The next three measures contain rests in both staves.

Handwritten musical notation for the third system of 'Teil ① #'. It consists of two staves. The top staff is in treble clef and the bottom staff is in bass clef. The first measure contains a melodic line in the treble and a bass line with a '44' marking. The second measure contains a melodic line in the treble and a bass line with a '44' marking. The next two measures contain rests in both staves.

Handwritten musical notation for the first system. The treble staff begins with a melodic line marked with an accent (^) and a dynamic of *pp*. The bass staff features a rhythmic accompaniment with notes marked with accents (^) and a dynamic of *pp*. A large slur spans across the system, and a fermata is placed over the final measure of the bass staff.

Handwritten musical notation for the second system. The treble staff continues the melodic line with notes marked with accents (^). The bass staff has notes marked with accents (^) and a dynamic of *pp*. A large slur spans across the system, and a fermata is placed over the final measure of the bass staff.

Handwritten musical notation for the third system. The treble staff features notes with accents (^) and a dynamic of *pp*. The bass staff has notes with accents (^) and a dynamic of *pp*. A large slur spans across the system, and a fermata is placed over the final measure of the bass staff.

Handwritten musical notation for the fourth system. The treble staff features a melodic line with notes marked with accents (^) and a dynamic of *pp*. The bass staff has notes with accents (^) and a dynamic of *pp*. A large slur spans across the system, and a fermata is placed over the final measure of the bass staff. The system concludes with the text "D.C. al Fine Teil 1".

Die gestorbenen sind - sind niemals fort -
sie sind im Schatten der sich erhebt -

Und im Schatten der tiefer ins Dunkel fällt

Teil 2

Lento

Sempre cresc.

Sie sind in dem Raum der dröhnt -
 Sie sind in dem Raum der töhnt -
 Sie sind in dem Wasser das sich ergießt -
 Wie im Wasser das schlafend die Augen schließt.

sie sind in der Hütte, sie sind im Boot -

Die Toten sind nicht tot.

Teil 2 (F)

Allegro (erregt)

Handwritten musical notation for the first system, measures 1-3. The system consists of two staves. The upper staff is in treble clef with a key signature of one sharp (F#) and a 4/4 time signature. It contains a whole rest in measure 1, followed by quarter notes G4, A4, and B4 in measures 2 and 3, with a slur over the last two notes. The lower staff is in bass clef with a key signature of one flat (Bb) and contains quarter notes B2, A2, G2, and F2 in measures 1-3, with a slur over the last two notes.

Handwritten musical notation for the second system, measures 4-6. The system consists of two staves. The upper staff is in treble clef with a key signature of one sharp (F#) and contains quarter notes G4, A4, and B4 in measures 4-6, with a slur over the last two notes. The lower staff is in bass clef with a key signature of one flat (Bb) and contains quarter notes B2, A2, G2, and F2 in measures 4-6, with a slur over the last two notes.

Handwritten musical notation for the third system, measures 7-9. The system consists of two staves. The upper staff is in treble clef with a key signature of one sharp (F#) and contains quarter notes G4, A4, and B4 in measures 7-9, with a slur over the last two notes. The lower staff is in bass clef with a key signature of one flat (Bb) and contains quarter notes B2, A2, G2, and F2 in measures 7-9, with a slur over the last two notes.

Handwritten musical notation for the first system. The upper staff is marked "hart" and contains a sequence of notes with accents (^) and slurs. The lower staff contains a bass line with notes and rests.

Handwritten musical notation for the second system. The upper staff features a melodic line with various accidentals (sharps, flats, naturals) and slurs. The lower staff has notes with accents (^) and rests.

Handwritten musical notation for the third system. The upper staff shows a wavy, tremolo-like line with notes and slurs. The lower staff contains chords and rests.

Handwritten musical notation for the fourth system. The upper staff has notes with slurs and accents (^). The lower staff includes notes with accents (^) and rests. The system concludes with a double bar line and the word "Fine".

Ganz fern im stampfenden Saugbas
hör ich das Dohungellied -

Der Sänger scheint zu sagen —:

Teil 3

sehr ruhig

Handwritten musical notation for the first system. It features a treble clef and a 4/4 time signature. The melody consists of a series of notes with a slur over them. The bass line consists of chords, with a circled 'p' marking. There are also some handwritten annotations like 'b' and 'b9'.

Handwritten musical notation for the second system. It features a treble clef and a 2/4 time signature. The melody consists of a series of notes with a slur over them. The bass line consists of chords. There are also some handwritten annotations like 'b' and 'b9'.

Handwritten musical notation for the third system. It features a treble clef and a 2/4 time signature. The melody consists of a series of notes with a slur over them. The bass line consists of chords. There are also some handwritten annotations like 'b' and 'b9'.

in mysteriösem Schritt und Grazie und Zauber-
 tanzen die Jungfrau-
 mit hüpfenden Brüsten — und —————>

Largo

lento (frei)

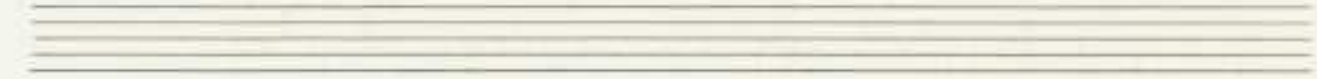
schwarze Burschen mit kräftigen Körpern -

brechen los - eine Dschungellied -

ihr eigen zu nennen.

Teil 3 A

Flageoletto



Handwritten musical notation for the first system. The upper staff contains a series of chords with stems pointing up, marked with a circled 'p' and an accent (^). The lower staff contains a series of notes with stems pointing up, marked with a circled 'p' and an accent (^). There are some scribbles and lines in the middle of the system.



Handwritten musical notation for the second system. The upper staff contains chords with stems pointing up, marked with a circled 'f' and accents (^). The lower staff contains notes with stems pointing up, marked with a circled 'f' and accents (^). There are some scribbles and lines in the middle of the system.



Handwritten musical notation for the third system. The upper staff contains chords with stems pointing up, marked with a circled 'p' and accents (^). The lower staff contains notes with stems pointing up, marked with a circled 'p' and accents (^). There are some scribbles and lines in the middle of the system.



gr. pit.

> pp

D.C.
Teil ③ al
Fus

Die wachsenden Trommel -
 der wie versagende Rundfunk des Inselungs
 d'zöhnt nicht mehr über die Hügel -

Teil 4 (4x)

Allegro con brio

der Worumf — der Klagetou —
 ist verstummt in den Blättern des Urwalds



Wo sind die Trommeln — die großen tiefen Trommeln,



die unsere Väter aus dem Fell des Wildes schufen —
 und deren aufbrüllende Echos — den schlafenden Krieger



wecken — daß er hastig nach dem Speer griff.



Die Tann Tanns klopfen nicht mehr -

Es kann nicht sein -

daß diese starken Arme - die vorbeist -

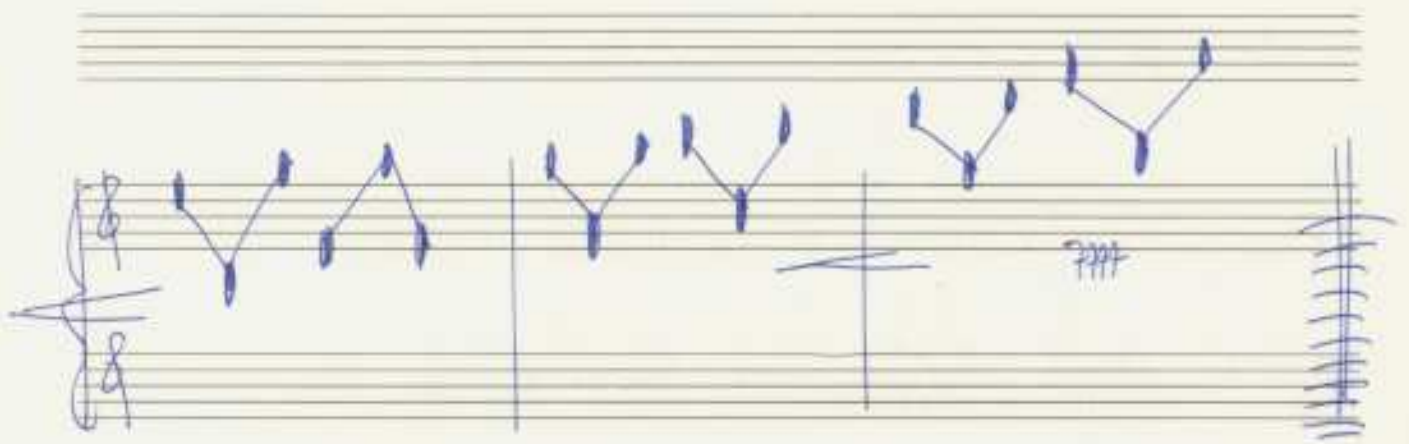
Teil (4) [7]

sehr breit (frei)

Prestissimo

die Klöppel zürhoben —

müde wurden ihrer Wechsankheit —



(Action) (Pronoi: G.P.

(kurz Glasflaschen mit voller Wucht in eine Kiste werfen) (frei) - solistisch

(es kann nicht sein —)

D.C. al Fine (Teil 4)

das die Lippen bleicher Männer
 solche mächtigen Zauber sprachen —
 kommt, schlägt die Klöppel —
 warnt die Angehörigen der Stämme, fern und nah,
 daß blindgesichtige Fremde
 mit ungeheiligten Füßen —
 das Erbe unserer Väter entweihen!

Zurück - Zu den Tagen der Trümmer -
und festlichen Gesängen im Schatten -

teil 5 *sonnengeküßter Palmen -*
Zurück?

Andante

Handwritten musical score for the first system. It consists of two staves. The top staff is in treble clef with a 3/4 time signature and a circled 'p' for piano. The bottom staff is in bass clef. A large slur covers the first two measures of both staves. The notes in the first measure are Bb, Bb, G# (with a sharp sign above it), and G# (with a sharp sign above it). The second measure contains F#, G, Ab, and Ab. The bottom staff has notes Bb, F, G# (with a sharp sign above it), and G# (with a sharp sign above it) in the first measure, and F#, G, Ab, and Ab in the second measure.

Handwritten musical score for the second system. It consists of two staves. The top staff is in treble clef and the bottom staff is in bass clef. A large slur covers the first two measures. The notes in the first measure are G# (with a sharp sign above it), G, Ab, and Ab. The second measure contains F#, G, Ab, and Ab. The bottom staff has notes Bb, F, G# (with a sharp sign above it), and G# (with a sharp sign above it) in the first measure, and F#, G, Ab, and Ab in the second measure.

Handwritten musical score for the third system. It consists of two staves. The top staff is in treble clef and the bottom staff is in bass clef. A large slur covers the first two measures. The notes in the first measure are G# (with a sharp sign above it), G, Ab, and Ab. The second measure contains F#, G, Ab, and Ab. The bottom staff has notes Bb, F, G# (with a sharp sign above it), and G# (with a sharp sign above it) in the first measure, and F#, G, Ab, and Ab in the second measure. A first ending bracket is present over the second measure of the top staff. The time signature changes to 4/4 at the end of the system.

Crit

Zu den ungebildeten Toren -
 da die Mädchen immer keusch waren -
 und die Burschen schlechte Wege verabschaute[n]

breit

aus Angst vor alten Göttern — ZURÜCK?

Flügelhorn quartett Teil 5 7

(3+)

Handwritten musical notation for the first system. It consists of two staves. The top staff has a treble clef and contains a whole rest. The bottom staff has a bass clef and contains a series of notes: a half note G2, a quarter note A2, a quarter note B2, a quarter note C3, a quarter note D3, and a quarter note E3. A circled number '37' is written next to the first measure. A bracket spans the first two measures of the bottom staff.

Handwritten musical notation for the second system. It consists of two staves. The top staff has a treble clef and contains notes: a half note G2, a quarter note A2, a quarter note B2, a quarter note C3, a quarter note D3, and a quarter note E3. The bottom staff has a bass clef and contains notes: a half note G2, a quarter note A2, a quarter note B2, a quarter note C3, a quarter note D3, and a quarter note E3. There are various markings above the notes, including accents and slurs.

Handwritten musical notation for the third system. It consists of two staves. The top staff has a treble clef and contains notes: a half note G2, a quarter note A2, a quarter note B2, a quarter note C3, a quarter note D3, and a quarter note E3. The bottom staff has a bass clef and contains notes: a half note G2, a quarter note A2, a quarter note B2, a quarter note C3, a quarter note D3, and a quarter note E3. There are various markings above the notes, including accents and slurs.

frei -

(3+ größtes accel. →)

G.P. folgt Teil 5 al Fine

Glaube ist ein Baum, Er wächst -
in die Wüste.

Teil [b]

Andante (sehr ruhig)

Glaube lebt - in der Hoffnung - vergeblich zuweilen -

weit (Blues tempo) leute (das Gott den Regen schickt)

Glaube ist zärtliches Vertrauen

vergeblich zuweilen

Friede

Teil 6 A

Flügelhorn

Handwritten musical notation for the first system of the Flügelhorn part. It consists of two staves. The top staff is in treble clef with a 4/4 time signature. The bottom staff is in bass clef. The music features a melodic line in the upper staff and a supporting bass line in the lower staff. A circled 'pp' dynamic marking is present. The notation includes various accidentals (flats and naturals) and phrasing slurs.

Handwritten musical notation for the second system of the Flügelhorn part. It consists of two staves. The top staff is in treble clef with a 4/4 time signature. The bottom staff is in bass clef. The music continues with a melodic line and a supporting bass line, featuring various accidentals and phrasing slurs.

Handwritten musical notation for the third system of the Flügelhorn part. It consists of two staves. The top staff is in treble clef with a 4/4 time signature. The bottom staff is in bass clef. The music continues with a melodic line and a supporting bass line, featuring various accidentals and phrasing slurs. A circled 'f' dynamic marking is present at the end of the system.

Handwritten musical notation for the first system. The treble clef has a circled sharp sign. The melody line contains slurs and ties. The bass line features chords and accidentals.

Handwritten musical notation for the second system. The treble clef has a circled sharp sign. The melody line contains slurs. The bass line features chords and accidentals.

Handwritten musical notation for the third system. The treble clef has a circled sharp sign. The melody line contains slurs. The bass line features chords and accidentals. A large oval bracket spans across the system.

Handwritten musical notation for the fourth system. The treble clef has a circled sharp sign. The melody line contains slurs. The bass line features chords and accidentals. Includes the text "Pedal bis ♯" and "rit... dim...".

D. C.
 Teil
 6
 al
 Fine

ppp