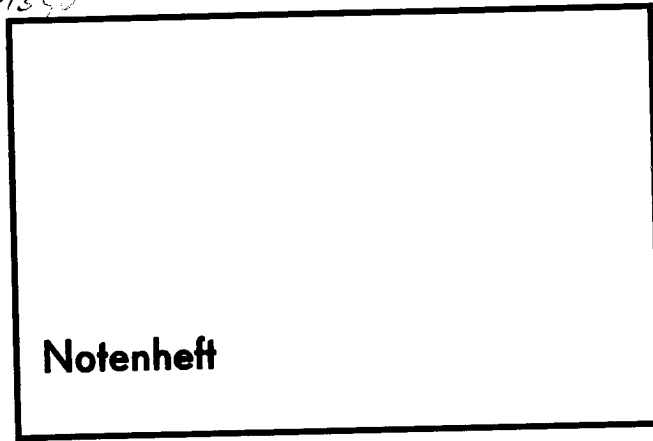


1390



Notenheft

7 (14) Teile

für Klavier —

(prepariertes Klavier)

(mit Holz oder Pergament) in den Saiten)

und mit interlegtem Text)

nach verschiedenen Gedichten

afrikanischer Autoren

Erhause mich geschwind -
Die Wesen in den Dingen -
Hör sie in Feuer singen

Teil 1

lesto

pp 3/4
Pedal bis

Hör sie im Wasser mahnen
Und lausche in den Wind:

Der Senfer im Gebüsch — Das ist der Hauch der Ahnen.

Handwritten musical notation for the first system. The treble clef staff contains a whole note G4, a whole note A4, and a whole rest. The bass clef staff contains a whole note G3, a whole note F3, and a whole note E3. A bracket spans across both staves.

Handwritten musical notation for the second system. The treble clef staff contains a whole note G4, a whole note A4, and a whole note B4. The bass clef staff contains a whole note G3, a whole note F3, and a whole note E3. A bracket spans across both staves.

Handwritten musical notation for the third system. The treble clef staff contains a whole note G4, a whole note A4, and a whole note B4. The bass clef staff contains a whole note G3, a whole note F3, and a whole note E3. A bracket spans across both staves.

Handwritten musical notation for the fourth system. The treble clef staff contains a whole note G4, a whole note A4, and a whole note B4. The bass clef staff contains a whole note G3, a whole note F3, and a whole note E3. A bracket spans across both staves. The system ends with a double bar line and a fermata. The word "rit" is circled at the beginning, and "Fine" is circled at the end. There are also some handwritten notes and symbols like "ppp" and a treble clef symbol.

Teil ① #

Presto

Handwritten musical score for the first system. The treble clef staff contains a melodic line starting with a half note G4, followed by a series of slurs and rests. The bass clef staff features a rhythmic accompaniment with eighth notes and rests. Dynamic markings include *p* and *f*. A large slur spans the entire system.

Handwritten musical score for the second system. The treble clef staff continues the melodic line with slurs and rests. The bass clef staff maintains the rhythmic accompaniment. Dynamic markings include *f*. A large slur spans the entire system.

Handwritten musical score for the third system. The treble clef staff has a melodic line with slurs and rests. The bass clef staff features a more complex rhythmic accompaniment with eighth notes and rests. Dynamic markings include *p*. A large slur spans the entire system.

Handwritten musical score for the fourth system. The treble clef staff concludes with a melodic flourish. The bass clef staff has a final accompaniment. Dynamic markings include *f*. A large slur spans the entire system.

D. Scherbaum
 22
 Frie
 Teil 1

Die gestorben sind - sind niemals fort -
sie sind im Schatten der sich erhebt -

Und im Schatten der tiefer ins Dunkel fällt

Teil 2

Lento

sempre cresc.

Sie sind in dem Baum der dröhnt -
 Sie sind in dem Baum der stöhnt -
 Sie sind in dem Wasser das sich ergießt -
 Wie im Wasser das schlafend die Augen schließt.

Sie sind in der Hölle, sie sind im Boot

Die Toten sind nicht tot.

Teil 2 (F)

Allegro (erregt)

Handwritten musical notation for the first system, measures 1-3. The right hand starts with a whole rest in measure 1, followed by quarter notes G4 and A4 in measures 2 and 3. The left hand plays a bass line with quarter notes B3, G3, F3, and E3 in measures 1-3. A circled 'F' is written above the first measure. Dynamic markings include accents (^) and slurs.

Handwritten musical notation for the second system, measures 4-6. The right hand has quarter notes G4 and A4 in measure 4, followed by quarter notes G4 and F4 in measure 5, and quarter notes G4 and A4 in measure 6. The left hand continues the bass line with quarter notes B3, G3, F3, and E3 in measures 4-6. Dynamic markings include accents (^) and slurs.

Handwritten musical notation for the third system, measures 7-9. The right hand has quarter notes G4 and A4 in measure 7, quarter notes G4 and F4 in measure 8, and quarter notes G4 and A4 in measure 9. The left hand continues the bass line with quarter notes B3, G3, F3, and E3 in measures 7-9. Dynamic markings include accents (^) and slurs.

hant

G.P.
D.C.
al
Terc. 2) Fine

Ganz fern von stampfenden Saugbas
hör ich das Dschungellied -

Der Sänger scheint zu sagen —:

Teil 3

sehr ruhig

in mysteriösem Schritt und Grazie und Zaubertänzen die Jungfrauen mit hüpfenden Brüsten — und —————>

Handwritten musical notation for the first system. The treble clef staff contains a melodic line with notes and accidentals (flats and naturals). The bass clef staff contains a harmonic accompaniment with chords and a dynamic marking p . There are some scribbles and corrections in the treble staff.

Handwritten musical notation for the second system. It continues the melodic and harmonic lines. A circled '7' is present in the treble staff at the beginning, and another circled '7' is at the end of the system. The dynamic marking p is also present.

Largo

Handwritten musical notation for the third system, marked "Largo". It features a circled '11' in the treble staff at the beginning and another circled '11' at the end. The treble staff has a melodic line with a circled '11' above it. The bass staff has a harmonic accompaniment with a dynamic marking pp . There are some scribbles and corrections in the treble staff.

lento (frei)

Handwritten musical notation for the fourth system, marked "lento (frei)". It features a circled '11' in the treble staff at the beginning and another circled '11' at the end. The treble staff has a melodic line with a circled '11' above it. The bass staff has a harmonic accompaniment with a dynamic marking pp . There are some scribbles and corrections in the treble staff.

schwarze Burschen mit kräftigen Körpern -

brechen los - eine Dschungelliebe -

ihr eigen zu nennen.

Teil [3] II

Allegretto

Handwritten musical score for the first system. It consists of two staves: a treble clef staff and a bass clef staff. The treble staff begins with a treble clef, a 4/4 time signature, and a circled 'pp' dynamic marking. The bass staff has a bass clef and a circled 'pp' dynamic marking. The music includes several measures of notes, rests, and accidentals. A key signature change to two flats is indicated above the treble staff. The system concludes with a double bar line and a fermata over the final note.

quasi

Handwritten musical score for the second system. It consists of two staves: a treble clef staff and a bass clef staff. The treble staff features complex chordal structures with many accidentals and a circled 'pp' dynamic marking. The bass staff has a bass clef and a circled 'p' dynamic marking. The system concludes with a double bar line and a fermata over the final note.

Handwritten musical score for the third system. It consists of two staves: a treble clef staff and a bass clef staff. The treble staff has a treble clef and a circled 'pp' dynamic marking. The bass staff has a bass clef and a circled 'p' dynamic marking. The music includes several measures of notes, rests, and accidentals. The system concludes with a double bar line and a fermata over the final note.

f *p*

Handwritten musical notation for the first system. It consists of two staves. The upper staff is in treble clef and contains several chords and notes, with a circled 'p' above the first measure. The lower staff is in bass clef and contains a sequence of notes. There are some handwritten annotations like '=' and a large horizontal line across the second measure.

Handwritten musical notation for the second system. It consists of two staves. The upper staff is in treble clef and contains several chords and notes, with a circled 'f' above the first measure. The lower staff is in bass clef and contains a sequence of notes. There are some handwritten annotations like '^' and a large horizontal line across the second measure.

Handwritten musical notation for the third system. It consists of two staves. The upper staff is in treble clef and contains several chords and notes, with a circled 'p' above the first measure. The lower staff is in bass clef and contains a sequence of notes. There are some handwritten annotations like '^' and a large horizontal line across the second measure.

orig. aut.

> pp

D. C.
Teil 3) al
Fino

Die wachsenden Trommel -
 der nie versagende Rundfunk des Ischungsels
 erhöht nicht mehr über die Hügel -

Teil 4 (4x)

Allegro con brio

der Wauruf - der Klagetou -
ist verstummt in den Röhren des Urwalds

Handwritten musical notation for the first system, featuring a treble and bass clef with various notes and rests.

Wo sind die Trommeln - die großen tiefen Trommeln,

Handwritten musical notation for the second system, including a circled key signature change to D major and various rhythmic markings.

die unsere Väter aus dem Fell des Wildes schufen -
und deren aufdröhrende Echo - den schlafenden Krieger

Handwritten musical notation for the third system, showing complex chordal textures and melodic lines.

weckten - daß er hastig nach dem Speer griff.

Handwritten musical notation for the fourth system, ending with a circled "Fine" marking.

Die Tann Tanns klopfen nicht mehr -
Es kann nicht sein -

daß diese starken Arme - die vorbeirrt -

Teil ④ ⑦

sehr breit (frei)

Prestissimo

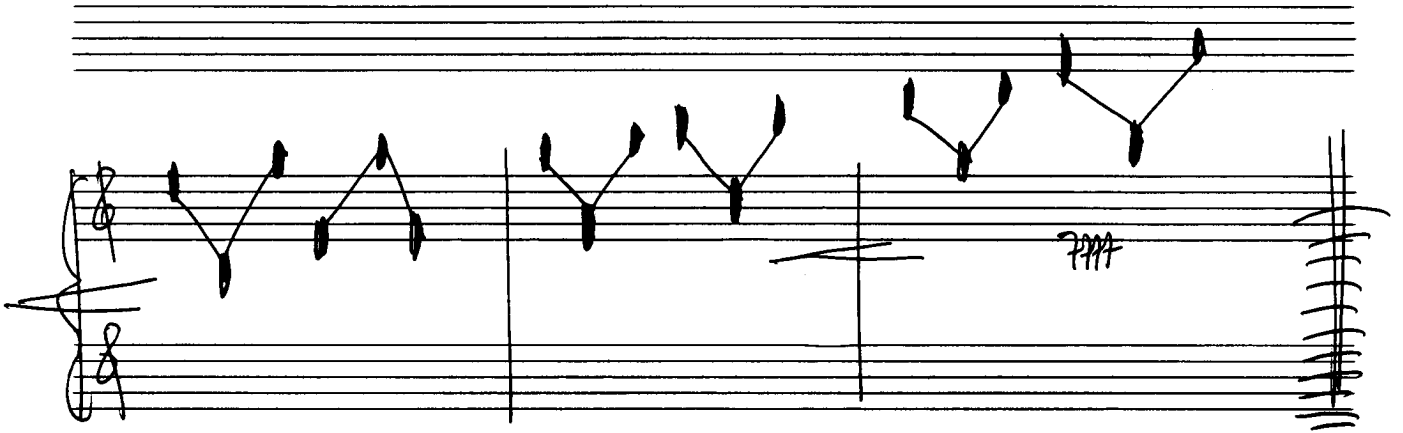
Handwritten musical notation for the first system. It consists of two staves. The upper staff is in treble clef with a key signature of one flat (B-flat). It begins with a circled treble clef and a circled key signature. The first measure contains a whole note chord with notes G4, B-flat4, and D5. A fermata is placed over this chord. The second measure contains a half note chord with notes G4 and B-flat4. The third measure contains a half note chord with notes G4 and B-flat4. The fourth measure contains a half note chord with notes G4 and B-flat4. The fifth measure contains a half note chord with notes G4 and B-flat4. The sixth measure contains a half note chord with notes G4 and B-flat4. The seventh measure contains a half note chord with notes G4 and B-flat4. The eighth measure contains a half note chord with notes G4 and B-flat4. The lower staff is in bass clef with a key signature of one flat. It begins with a circled bass clef and a circled key signature. The first measure contains a whole note chord with notes G3, B-flat3, and D4. A fermata is placed over this chord. The second measure contains a half note chord with notes G3 and B-flat3. The third measure contains a half note chord with notes G3 and B-flat3. The fourth measure contains a half note chord with notes G3 and B-flat3. The fifth measure contains a half note chord with notes G3 and B-flat3. The sixth measure contains a half note chord with notes G3 and B-flat3. The seventh measure contains a half note chord with notes G3 and B-flat3. The eighth measure contains a half note chord with notes G3 and B-flat3. The dynamic marking 'pp' is written above the first measure of the second staff.

Handwritten musical notation for the second system. It consists of two staves. The upper staff is in treble clef with a key signature of one flat. It contains a long melodic line with a slur over it. The lower staff is in bass clef with a key signature of one flat. It contains a long melodic line with a slur over it. The dynamic marking 'ff' is written below the lower staff.

Handwritten musical notation for the third system. It consists of two staves. The upper staff is in treble clef with a key signature of one flat. It contains a series of notes connected by lines, forming a sequence of chords. The lower staff is in bass clef with a key signature of one flat. It contains a series of notes connected by lines, forming a sequence of chords. The dynamic marking 'pp' is written above the first measure of the lower staff. The instruction 'Pedal bis' is written below the lower staff.

die Klöppel zühten—

müde wurden ihrer Wechsbarkeit—



(Action) (Prono: G.P.
(leere Glasflaschen mit voller Wucht in eine Kiste werfen) (frei) = schreiend) D.C. al Fine (Teil 4)
es kann nicht sein

A section of handwritten musical notation featuring a large slur over two staves. Below the staves are performance instructions in German. The first instruction is "(Action) (leere Glasflaschen mit voller Wucht in eine Kiste werfen)". The second is "(Prono: (frei) = schreiend)". To the right, there are markings "G.P.", "D.C. al Fine (Teil 4)", and "es kann nicht sein".

das die Lippen bleicher Männer
solch mächtigen Zauber sprachen—
Kommt, schlägt die Klöppel—
warnt die Angehörigen der Stämme, fern und nah,
das bleichgesichtige Fremde
mit ungeheiligten Füßen—
das Erbe unserer Väter entweihen!

Zurück - Zu den Tagen der Trommel -
und festlichen Gesängen im Schatten -

Teil 5 ~~sonnengekürster Palmen~~
zurück?

Andante

(mit

Zu den ungebildeten Toren -
 da die Mädchen immer keusch waren -
 und die Burschen schlechte Wege verabschaute

über

Handwritten musical notation for the first system, featuring a treble and bass clef with notes and chords.

aus Angst vor alten Göttern - ZURÜCK?

Handwritten musical notation for the second system, continuing the piece with notes and chords.

Handwritten musical notation for the third system, including a fermata over the word "dun".

Handwritten musical notation for the fourth system, ending with a circled "Frie" and a "pp" dynamic marking.

Allegro agitato Teil 5 A (34)

Handwritten musical notation for the first system. It consists of two staves: a treble clef staff and a bass clef staff. The treble staff contains a circled 'A' and a series of notes with stems, some beamed together. The bass staff contains notes with stems, some beamed together. There are several rests in both staves.

Handwritten musical notation for the second system. It consists of two staves: a treble clef staff and a bass clef staff. The treble staff contains notes with stems, some beamed together, and some notes with sharp signs. The bass staff contains notes with stems, some beamed together.

Handwritten musical notation for the third system. It consists of two staves: a treble clef staff and a bass clef staff. The treble staff contains notes with stems, some beamed together, and some notes with sharp signs. The bass staff contains notes with stems, some beamed together.

frei —

♯

3+ quater accel. →

(3x)

G.P. folgt Teil [5] al Fine

Glaube ist ein Baum, Er wächst -
in die Wüste.

Teil [6]

Andante (sehr ruhig)

Handwritten musical notation for the first system, featuring a treble clef, a 3/4 time signature, and a piano (p) dynamic marking. The notation includes a triplet of chords in the upper staff and a melodic line in the lower staff.

Handwritten musical notation for the second system, featuring a treble clef, a 3/4 time signature, and a piano (p) dynamic marking. The notation includes a triplet of chords in the upper staff and a melodic line in the lower staff.

Handwritten musical notation for the third system, featuring a treble clef, a 3/4 time signature, and a piano (p) dynamic marking. The notation includes a triplet of chords in the upper staff and a melodic line in the lower staff. A box containing the text "Sei mit" is written above the second measure of the upper staff.

Glaube lebt - in der Hoffnung - vergeblich zuweilen -

weit (Blues tempo) leute (das Gott den Regen schickt)

Handwritten musical notation for the first system. It features a treble clef, a circled '7' in the first measure, and various chord diagrams below the staff. The lyrics 'Glaube ist göttliches Vertrauen' are written below the second measure.

Handwritten musical notation for the second system. It continues the melody with chord diagrams and the lyric 'vergeblich zuweilen' written below the staff.

Handwritten musical notation for the third system. It includes a circled '9' in the first measure and continues the musical composition with chord diagrams.

Handwritten musical notation for the fourth system. It concludes the piece with a circled 'Friede' and final chord diagrams.

Teil 6 A

Agitato

Pedal bis ♯

rit... dim

ppp

D. C.
Teil
6
al
Fine