

1390



7 (14) Teile

für Klavier —

(prepariertes Klavier)

(mit Holz oder Pergament) in den Saiten)

und mit interlegtem Text)

nach verschiedenen Gedichten
afrikanischer Autoren

Erhause mir geschwind -
Die Wesen in den Dingen -
Hör sie im Feuer singen

Teil 1

lento

pp 3/4
Pedal bis ♯

Hör sie im Wasser mahnen
Und rausche in den Wind:

Der Senfer im Gebüsch — Das ist der Hauch der Blumen.

Teil ① #

Presto

Die gestorben sind - sind niemals fort -
sie sind im Schatten der sich erhebt -

Und im Schatten der tiefer ins Dunkel fällt -

Teil 2

Lento

Sempre cresc.

Sie sind in dem Baum der dröhnt -
 Sie sind in dem Baum der höhnt -
 Sie sind in dem Wasser das sich ergießt -
 Wie im Wasser das schlafend die Augen schließt.

sie sind in der Hölle, sie sind im Boot -

Die Toten sind nicht tot.

Teil 2 (F)

Allegro (erregt)

Handwritten musical notation for the first system, measures 1-3. The system consists of two staves. The right staff is in treble clef with a 4/4 time signature and a circled 'F' indicating the key signature. The left staff is in bass clef. Measure 1 contains a whole rest in the right hand and a bass clef with a flat in the left hand. Measure 2 features a melodic line in the right hand starting on G4 with an accent (^) and a slur, and a bass line in the left hand with notes G3, A3, B3, and C4. Measure 3 continues the melodic line in the right hand with notes G4, A4, and B4, and a whole rest in the left hand.

Handwritten musical notation for the second system, measures 4-6. The system consists of two staves. The right staff is in treble clef. Measure 4 has a whole rest in the right hand and a bass clef with a flat in the left hand. Measure 5 features a melodic line in the right hand starting on G4 with an accent (^) and a slur, and a bass line in the left hand with notes G3, A3, B3, and C4. Measure 6 continues the melodic line in the right hand with notes G4, A4, and B4, and a whole rest in the left hand.

Handwritten musical notation for the third system, measures 7-9. The system consists of two staves. The right staff is in treble clef. Measure 7 has a whole rest in the right hand and a bass clef with a flat in the left hand. Measure 8 features a melodic line in the right hand starting on G4 with an accent (^) and a slur, and a bass line in the left hand with notes G3, A3, B3, and C4. Measure 9 continues the melodic line in the right hand with notes G4, A4, and B4, and a whole rest in the left hand.

hant

G.P.
D.C.
al
Teil 2) Fine

Ganz fern von stampfenden Säugern
 hör ich das Dschungellied -
 Der Säger scheint zu sagen —:

Teil 3

sehr ruhig

in rhythmischen Schritt und Grazie und Zauber-
 tanzen die Jungfrau-
 mit hüpfenden Brüsten — und —————>

Largo

lento (frei)

schwarze Burschen mit kräftigen Körpern -
 brechen das - eine Dschungelliebe -
 ihr eigen zu nennen.

Teil [3] A

Allegretto

quasi

Handwritten musical notation for the first system. It consists of two staves. The upper staff is in treble clef and contains a series of chords and notes, with a circled 'p' and an accent mark above the first measure. The lower staff is in bass clef and contains a sequence of notes, with a circled 'p' and an accent mark above the first measure. There are some scribbles and lines in the right-hand part of the system.

Handwritten musical notation for the second system. It consists of two staves. The upper staff is in treble clef and contains chords and notes, with a circled 'f' and several accent marks above the notes. The lower staff is in bass clef and contains a sequence of notes, with a circled 'f' and an accent mark above the first measure. There are some scribbles and lines in the right-hand part of the system.

Handwritten musical notation for the third system. It consists of two staves. The upper staff is in treble clef and contains chords and notes, with a circled 'p' and several accent marks above the notes. The lower staff is in bass clef and contains a sequence of notes, with a circled 'p' and an accent mark above the first measure. There are some scribbles and lines in the right-hand part of the system.

gr. rit.

> pp

D.C.
Teil 3 al
Fino

Die wachsenden Trommel -
 der nie versagende Rundfunk des Ischmungsels
 dröhnt nicht mehr über die Hügel -

Teil 4 (4x)

Allegro con brio

der Worumf - der Klage ton -
 ist verstummt in den Röhren des Urwalds

Wo sind die Trommeln - die großen tiefen Trommeln,

die unsere Väter aus dem Fell des Wildes schufen -
 und deren aufdröhrende Echo - den schlafenden Krieger

weckten - dass er hastig nach dem Speer griff.

Die Tann Tanns klopfen nicht mehr -
Es kann nicht sein -

daß diese starken Arme - die vorbeirrt -

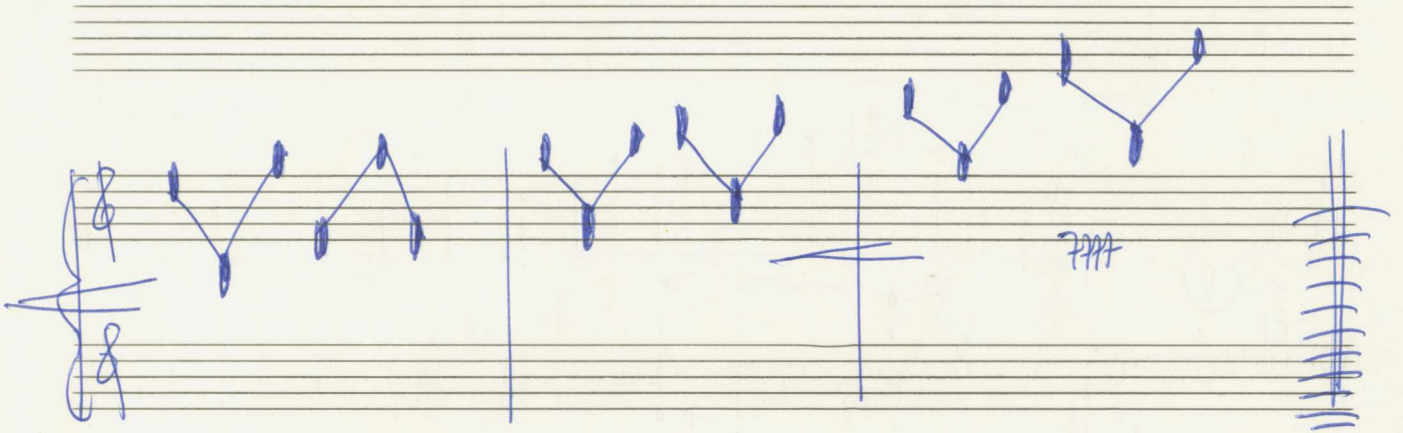
Teil ④ [A]

sehr breit (frei)

Prestissimo

die Klöppel zühten —

müde wurden ihrer Wachsamkeit —



(Action) (Pronon:)

(leere Glasflaschen mit voller Wucht in eine Kiste werfen) (frei) — schreiend)

es kann nicht sein —

G.P.
D.C.
al
Fine
(Teil 4)

das die Lippen bleicher Männer
solch mächtigen Zauber sprachen —
Kommt, schlägt die Klöppel —
warnt die Angehörigen der Stämme, fern und nah,
das bleidgesichtige Fremde
mit ungeheiligten Füßen —
das Erbe unserer Väter entweihen!

Zurück - Zu den Tagen der Trommel -
und festlichen Gesängen im Schatten -

Teil 5 Sommergekürster Palmen -
zurück?

Andante

(mit

Zu den ungebildeten Toren -
 da die Mädchen immer keusch waren -
 und die Burschen schlechte Wege verabscheuten

breit

Handwritten musical notation for the first system, featuring a treble and bass clef with notes and chords. The treble clef part has a circled sharp sign (#) and a circled 'p'. The bass clef part has a circled sharp sign (#) and a circled 'p'.

aus Angst vor alten Göttern - ZURÜCK?

Handwritten musical notation for the second system, featuring a treble and bass clef with notes and chords. The treble clef part has a circled sharp sign (#) and a circled 'p'. The bass clef part has a circled sharp sign (#) and a circled 'p'.

Handwritten musical notation for the third system, featuring a treble and bass clef with notes and chords. The treble clef part has a circled sharp sign (#) and a circled 'p'. The bass clef part has a circled sharp sign (#) and a circled 'p'.

Handwritten musical notation for the fourth system, featuring a treble and bass clef with notes and chords. The treble clef part has a circled sharp sign (#) and a circled 'p'. The bass clef part has a circled sharp sign (#) and a circled 'p'. There are also circled annotations 'Frie' and 'pp'.

Allegro agitato Teil 5 A

(34)

frei -

3+ quites accel. →

G.P. folgt Teil [5] al Fine

Glaube ist ein Baum, Er wächst -
in die Wüste.

Teil [6]

Andante (sehr ruhig)

Handwritten musical notation for the first system, featuring a treble clef, a 3/4 time signature, and a piano (p) dynamic marking. The notation includes three measures of chords, each marked with a '3' above it, indicating a triplet. The lower staff shows a few notes, including a half note and a quarter note with a fermata.

Handwritten musical notation for the second system, featuring a treble clef and a 3/4 time signature. The notation includes three measures of chords, each marked with a '3' above it, indicating a triplet. The lower staff shows a few notes, including a half note and a quarter note with a fermata.

Handwritten musical notation for the third system, featuring a treble clef and a 3/4 time signature. The notation includes three measures of chords, each marked with a '3' above it, indicating a triplet. A box labeled "sehr ruhig" is written above the second and third measures. The lower staff shows a few notes, including a half note and a quarter note with a fermata.

Glaube lebt - in der Hoffnung - vergeblich zuweilen -

weit (Blues tempo) leute (das Gott den Regen schickt)

Glaube ist zärtliches Vertrauen

vergeblich zuweilen.

Friede

Teil 6 7

Agitato

Handwritten musical notation for the first system. The treble clef staff contains a circled 'pp' dynamic marking followed by a series of notes with accidentals (flats and naturals) and slurs. The bass clef staff contains notes with accidentals and slurs. The system concludes with a double bar line.

Handwritten musical notation for the second system. The treble clef staff continues with notes and slurs. The bass clef staff contains notes with accidentals and slurs. The system concludes with a double bar line.

Handwritten musical notation for the third system. The treble clef staff features notes with accidentals and slurs. The bass clef staff contains notes with accidentals and slurs. A circled 'f' dynamic marking is present at the end of the system. The system concludes with a double bar line.

Handwritten musical notation for the first system, featuring a treble clef with a circled '7' and a bass clef with a circled '7'. The music includes chords and melodic lines with slurs and accents.

Handwritten musical notation for the second system, featuring a treble clef with a circled '7' and a bass clef with a circled '7'. The music includes chords and melodic lines with slurs and accents.

Handwritten musical notation for the third system, featuring a treble clef with a circled '7' and a bass clef with a circled '7'. The music includes chords and melodic lines with slurs and accents. A large slur spans across the system.

Handwritten musical notation for the fourth system, featuring a treble clef with a circled '7' and a bass clef with a circled '7'. The music includes chords and melodic lines with slurs and accents. A large slur spans across the system. The text "Pedal bis φ" is written on the left, and "rit... dim" is written above the system. The text "D.C. Teil 6 al Fine" is written on the right.