

Notenheft


Eindrücke frei

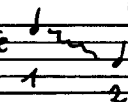
Flöte — Solo — (gr. Flöte — Piccolo —
Alt Flöte —
(Klavier — (Orgel — Elektr.) Celesta)


(bei graphischer Notation —

ad. lib. (folgende Cluster — oder Notationen)

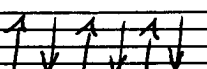
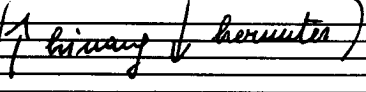
|| Fis | G | F | DES | ES | D | AS | B | E | A | H | C ||

Anmerkung:  bedeutet = raschster Lauf — (ad. lib.) — kein chromatischer Lauf — sondern

von der ersten Hauptnote  raschest zum zweiten Hauptnote.

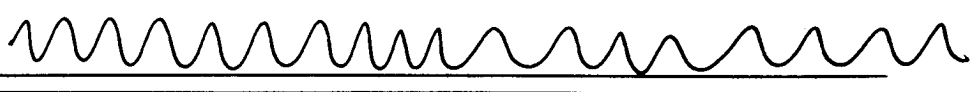
 sind Tontrauben (ad. lib.) die aber auch mit der oben angegebenen Tonfolge (1 — 8) angeschlagen werden kann.

(ein ° über einer Note — bedeutet — Flag.)

 bedeutet — Viertelnote  (hinweg / herunter)

H = bedeutet (beginnen des Halls) große Lautsprecher mit Verstärkeranlage

Viel Hall



ganz frei

Handwritten musical notation for the first system. It consists of two staves. The upper staff is in treble clef and contains a melodic line with notes, slurs, and dynamic markings: *pp*, *großernote*, *fp*, and *pp*. The lower staff is in bass clef and contains a piano accompaniment with a large slur and the marking *ppp (klavier)*. A box labeled *Pedal* is drawn below the lower staff, with a wavy line indicating the pedal effect. A circled number 1 is written below the lower staff.

Handwritten musical notation for the second system. It consists of two staves. The upper staff is in treble clef and contains a melodic line with notes, slurs, and dynamic markings: *pp*, *fp*, and *pp*. The lower staff is in bass clef and contains a piano accompaniment with a large slur and the marking *ppp*. A circled number 2 is written below the lower staff.

Handwritten musical notation for the third system. It consists of two staves. The upper staff is in treble clef and contains a melodic line with notes, slurs, and dynamic markings: *pp*, *fp*, *ppp*, *ff*, and *ff*. The lower staff is in bass clef and contains a piano accompaniment with a large slur and the marking *ppp*. A circled number 3 is written below the lower staff.

Handwritten musical notation for the fourth system. It consists of two staves. The upper staff is in treble clef and contains a melodic line with notes, slurs, and dynamic markings: *ff*, *pp*, and *ppp*. The lower staff is in bass clef and contains a piano accompaniment with a large slur and the marking *ppp*. A circled number 4 is written below the lower staff.

lento (♩)

9 10

11 12

pp *pp* *d.e.*

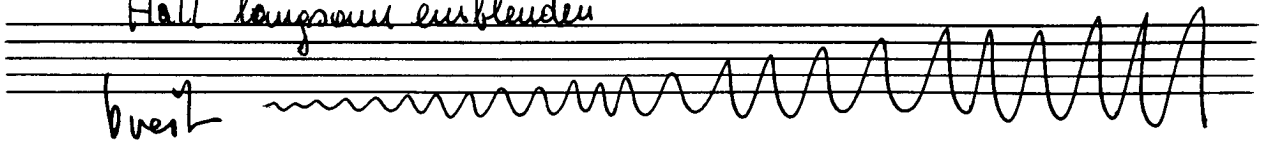
13 14

pp *fp* *f* *pp* *fp* *ppp*

12

ppp

Hall langsam einblenden



(Klavier) 13

erregt (frei)

12

sehr ruhig (viel Vibrato)

(♭)

pp (Orgel) pp (H2T Flöte) fp > pp

pp

Pedal

18

pp = pp fp > pp

pp

P.C.

19

(♭) leuts

pp

ppp (Klavier)

20

21

ppp

etwas Hall

Presto (d.=1) grotesk

3 hart (verfreundetes Klavier) (mit Pergamentstreifen zwischen den Saiten)

22 23 24 25

Block A

26 27 28 29 30 31 32 33 34 35 36 37 38 39 40 41

Block A

Piccolo

grottesk

42 43 44 45 46 47

Block B

viel Hart

(Flatterz.)

(ad. 2. b
oktave)

48 49 50 51

52 53 54

Bloek B Bloek B Bloek B

55 56 57 58 59 60

hart

D.C.

55 56 57 58 59 60

hart

D.C.

tempo din

Finis

61 62 63 64

p ppp

tempo din

Finis

61 62 63 64

p ppp



viel Holz
sehr ruhig

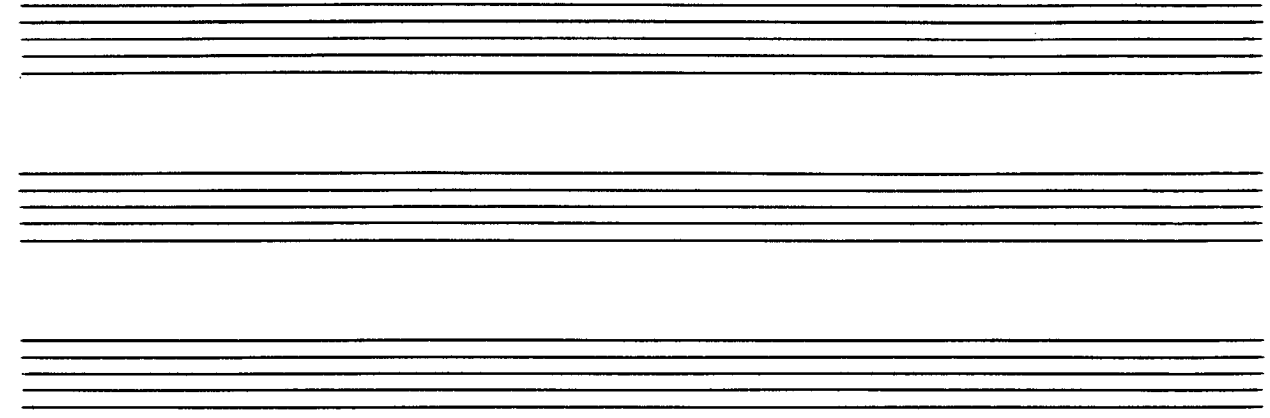
gr. Flöte

ppp (Celesta)

Pedal bis ♯

p

pp



Handwritten musical score for the first system, measures 72-74. The system consists of a treble clef staff and a grand staff (treble and bass clefs). Measure 72 has a circled number 72. Measure 73 has a circled number 73. Measure 74 has a circled number 74. There are various musical notations including notes, rests, and dynamic markings like 'pp'.

Handwritten musical score for the second system, measures 75-77. The system consists of a treble clef staff and a grand staff. Measure 75 has a circled number 75. Measure 76 has a circled number 76. Measure 77 has a circled number 77. Above measure 77 is the handwritten text "(2. + ev. rit)". Below measure 77 is the handwritten text "D.C.". There are various musical notations including notes, rests, and dynamic markings like 'pp'.

Handwritten musical score for the third system, measures 78-80. The system consists of a treble clef staff and a grand staff. Measure 78 has a circled number 78. There are various musical notations including notes, rests, and dynamic markings like 'pp' and 'ppp'. The word "lunga" is written in the bass staff.

alles ganz frei

(78) (79)

(normal Klavier)

Hall einblenden

(80)

(atmen ad. lib.) dazwischen / ganz rasch

(81)

(Orgel)

(viel Hall)

(Klavier)

(frei mit überlauter)

Pedal ppp

82

(lang held (Klarinet))

(frei - sehr ruhig)

ppp

(Altpöste)

pp

P.C.

83

Lento

84

85

86

ppp

87

Presto (4+)

sehr energ. (Normal-Klavier)

88 89 90 91

Pedal

Flöte

hant. stark.

92 93

Flötens.

94 95 96 97

Pedal

Handwritten musical score for the first system. The top staff contains a wavy line. The middle staff is in treble clef with notes and accidentals, including dynamics *pp* and *f*. The bottom staff is in bass clef with a circled measure number 98.

Handwritten musical score for the second system. The top staff contains a wavy line. The middle staff is in treble clef with notes and accidentals, including dynamics *pp* and *f*. The bottom staff is in bass clef with a circled measure number 99 and the text "D.C." and "G.P." in a box.

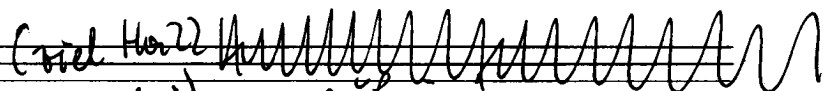
Handwritten musical score for the third system. The top staff contains a wavy line with the annotation "(Flatters)". The middle staff is in treble clef with notes and accidentals, including dynamics *pp* and *f*. The bottom staff is in bass clef with circled measure numbers 100, 101, 102, and 103, and various musical notations.

ganz frei (sehr ruhig)

(104) (105) (106)

(1) (Klavier)

4 (pp)

(viel Horn) 
(ganz frei) sehr ruhig
(1) (Altflöte)

(107)

rit

pp

ppp

(Orgel)

Pedal

(108)

(♩)

pp = < = H > pp

ppp (Orgel)

109

10

ppp

pp

110

d.c.

Largo

111

112

113

114

pp

ppp

(Klavier)

Pedal

15

Wavy line →
(viel Hall)

sehr ruhig (♩) (frei) (ad. lib.)
pr. Fl. (oder) Pflöte -

6/8 (Klavier) 115

ppp 116

Wavy line → frei

117

pp 118

Wavy line →

119

Handwritten musical score for the first system, measures 118-120. It features three staves: Flute (top), Clarinet (middle), and Bassoon (bottom). The Flute part has a melodic line with a fermata and a dynamic marking of pp. The Clarinet and Bassoon parts have sustained chords. Measure numbers 118, 119, and 120 are circled. There are handwritten annotations like '4#', 'bb', and 'pp'.

Handwritten musical score for the second system, measures 121-123. It features three staves: Flute (top), Clarinet (middle), and Bassoon (bottom). The Flute part has a melodic line with a fermata and a dynamic marking of pp. The Clarinet and Bassoon parts have sustained chords. Measure numbers 121, 122, and 123 are circled. There are handwritten annotations like 'ppp', 'pp', and 'ppp'.

Handwritten musical score for the third system, measures 124-126. It features three staves: Flute (top), Clarinet (middle), and Bassoon (bottom). The Flute part has a melodic line with a fermata and a dynamic marking of pp. The Clarinet and Bassoon parts have sustained chords. Measure numbers 124, 125, and 126 are circled. There are handwritten annotations like 'pp', 'ppp', and '(Orgel)'.