

L.v. BEETHOVEN



W.A. MOZART



# NOTENHEFT

---

F. SCHUBERT



J. HAYDN



J. STRAUSS



(r) lento Teil 1

Handwritten musical score for the first system, featuring three staves. The top staff has a treble clef and a key signature of two flats. It contains a melodic line with notes, rests, and dynamic markings including *pp* and *f*. The middle and bottom staves are part of a grand staff with a bass clef and a key signature of two flats. They contain accompaniment with notes, rests, and dynamic markings including *ppp*, *pp*, and *#pp*. There are also some handwritten annotations like *tr* and *tr*.

Handwritten musical score for the second system, continuing the piece with three staves. The top staff has a treble clef and a key signature of two flats. It contains a melodic line with notes, rests, and dynamic markings including *pp*, *f*, and *f =*. The middle and bottom staves are part of a grand staff with a bass clef and a key signature of two flats. They contain accompaniment with notes, rests, and dynamic markings including *pp*, *f > pp*, and *ppp*. There are also some handwritten annotations like *consord. Solo* and *ppp*.

Handwritten musical score for the first system. The top staff is for the flute, starting with a treble clef and a key signature of one flat (B-flat). The first measure contains a whole note chord with a flat and a sharp symbol. The second measure has a whole note chord with a flat and a sharp symbol. The third measure has a whole note chord with a sharp and a double sharp symbol. The fourth measure has a whole note chord with a sharp and a double sharp symbol. The fifth measure has a whole note chord with a flat and a sharp symbol. The sixth measure has a whole note chord with a flat and a sharp symbol. The piano accompaniment consists of three staves. The first staff has a treble clef and a key signature of one flat. The second staff has a bass clef and a key signature of one flat. The third staff has a bass clef and a key signature of one flat. The piano part includes dynamic markings such as *pp* and *ppp*.

Handwritten musical score for the second system. The top staff is for the flute, starting with a treble clef and a key signature of one flat. The first measure contains a whole note chord with a flat and a sharp symbol. The second measure has a whole note chord with a flat and a sharp symbol. The third measure has a whole note chord with a flat and a sharp symbol. The fourth measure has a whole note chord with a flat and a sharp symbol. The fifth measure has a whole note chord with a flat and a sharp symbol. The sixth measure has a whole note chord with a flat and a sharp symbol. The piano accompaniment consists of three staves. The first staff has a treble clef and a key signature of one flat. The second staff has a bass clef and a key signature of one flat. The third staff has a bass clef and a key signature of one flat. The piano part includes dynamic markings such as *pp* and *ppp*.

Handwritten musical score for the first system. The top staff is for the flute, and the bottom staff is for the cello. The music is in 4/4 time. The flute part begins with a *pp* dynamic and a *sol* marking. The cello part has a *pp* dynamic and a *sol* marking. The score includes various dynamics such as *pp*, *f*, and *ff*, along with articulations like accents and slurs. A *sol* marking is also present in the cello part.

Handwritten musical score for the second system. The top staff is for the flute, and the bottom staff is for the cello. The music continues with complex notation, including slurs and accents. The flute part has a *f* dynamic and a *sol* marking. The cello part has a *pp* dynamic and a *sol* marking. The score includes various dynamics such as *pp*, *f*, and *ff*, along with articulations like accents and slurs. A *sol* marking is also present in the cello part.

Handwritten musical score for the first system. The top staff is for the flute, starting with a dynamic marking of *pp* and a key signature of one flat. It features a melodic line with a slur and a triplet of eighth notes. The second staff is for the piano, with dynamics *fff* and *ff*. The piano part has a simple accompaniment with a few notes and rests.

Handwritten musical score for the second system. The top staff continues the flute part with a dynamic marking of *ff*. The piano part includes the marking *alle* and has dynamics *ff* and *fff*. The piano accompaniment consists of chords and rhythmic patterns in the right and left hands.

Handwritten musical score for the first system. The top staff is for the flute, showing a melodic line with various ornaments and dynamics. The bottom three staves are for the strings, with chords and rhythmic patterns. The key signature has one flat (B-flat), and the time signature is 3/4. Dynamics include *ppp* and *f*.

Fine

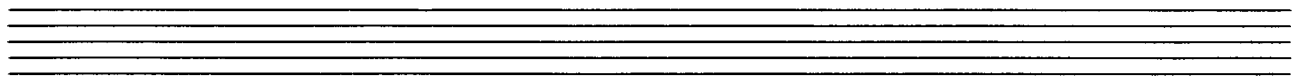
Handwritten musical score for the second system. The top staff is for the flute, showing a melodic line with various ornaments and dynamics. The bottom three staves are for the strings, with chords and rhythmic patterns. The key signature has one flat (B-flat), and the time signature is 3/4. Dynamics include *ppp*, *f*, and *pp*. Performance instructions include *con sord.* and *pizz.*

(leichte + großes gut... und A)

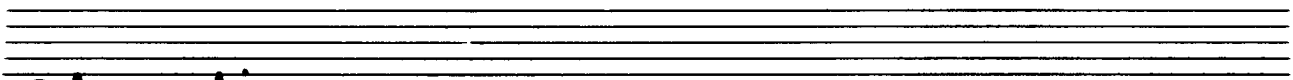
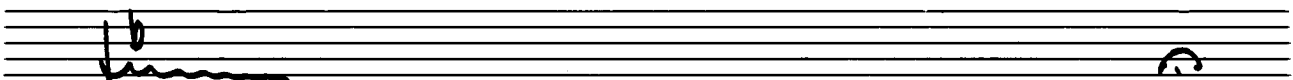
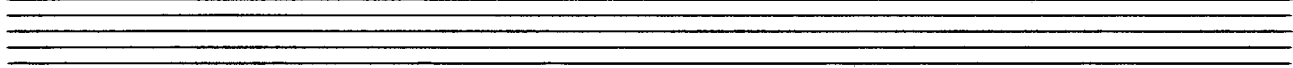
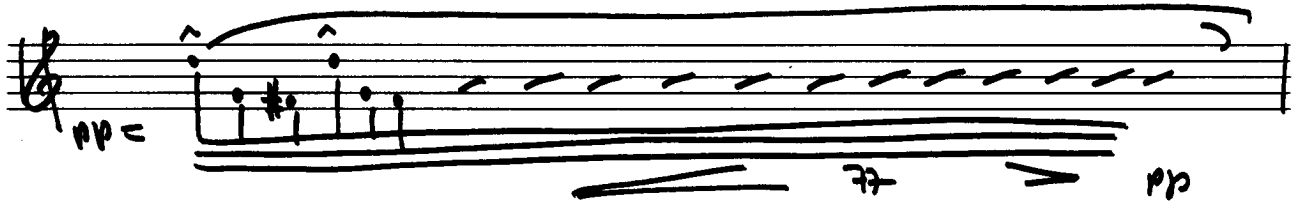
Teil 2

Sehe (ganz frei) (mit Hand) laut sprechen -

vraih



*harsh*



*oder ruhig*



*folgt Teil I.*



# Teil 3

*Allegro con brio*

Handwritten musical score for the first system. It consists of five staves. The top staff shows a series of chords with accidentals:  $b \sharp \sharp$ ,  $\sharp \flat \sharp \sharp$ ,  $\sharp \sharp$ , and  $\sharp \sharp$ . The second staff (flute) has notes with slurs and accents, including a  $77$  marking. The third and fourth staves (piano) show complex rhythmic patterns with slurs and accents, including a  $77$  marking and a  $77$  marking with  $(pizz)$ . The fifth staff (bass) has notes with slurs and accents, including a  $77$  marking.

Handwritten musical score for the second system. It consists of five staves. The top staff shows a series of chords with accidentals:  $\sharp \flat \sharp \flat$ ,  $\sharp \flat \sharp \flat$ ,  $\sharp \flat \sharp \flat$ , and  $\flat \sharp$ . The second staff (flute) has notes with slurs and accents, including a  $77$  marking with  $pizz$  and a  $arco$  marking. The third and fourth staves (piano) show complex rhythmic patterns with slurs and accents, including a  $pizz pp$  marking and a  $f$  marking. The fifth staff (bass) has notes with slurs and accents, including a  $pizz pp$  marking and a  $f$  marking.

Handwritten musical score for the first system. The top staff is for the flute, showing a melodic line with various accidentals (sharps, flats, naturals) and dynamic markings such as *f* and *pp*. The piano accompaniment consists of two staves (treble and bass clef) with chords and rhythmic patterns. The system concludes with a double bar line.

Handwritten musical score for the second system. The flute part continues with a melodic line, including a section with a wavy, scribbled-out appearance. The piano accompaniment remains mostly static with some chordal changes. The system concludes with a double bar line.

Handwritten musical score for the first system. The top staff is for the flute, starting with a  $pp=$  dynamic marking. The piano accompaniment is written in two staves (treble and bass clef). The bass clef part includes a  $pp=$  marking and a  $arco$  instruction. The music consists of three measures with various notes, rests, and articulation marks.

Handwritten musical score for the second system. The top staff is for the cello, marked "Cello solo". The piano accompaniment is written in two staves (treble and bass clef). The music consists of three measures with various notes, rests, and articulation marks. The piano part includes a circled 'D' marking and a circled 'P' marking.

Handwritten musical score for the first system. The top staff is in treble clef with a key signature of one sharp (F#) and a common time signature. It contains a melodic line with various accidentals and dynamics like 'pp' and '77'. The piano accompaniment is written in bass clef with chords and notes. There are also some handwritten annotations like '37' and '77'.

Handwritten musical score for the second system. The top staff is in treble clef with a key signature of one sharp (F#) and a common time signature. It contains a melodic line with various accidentals and dynamics like 'pp' and 'f'. The piano accompaniment is written in bass clef with chords and notes. There are also some handwritten annotations like 'piss' and 'f'.

Handwritten musical score for the first system. The top staff is for the flute, showing a complex rhythmic pattern with many sixteenth notes and some accidentals. The middle staves are for the piano, with a 'Solo' marking and various dynamics like *p*, *f*, and *sf*. The bottom staff is for the bass line, mostly consisting of rests.

Handwritten musical score for the second system. The flute part continues with a melodic line and some wavy lines indicating breath or dynamics. The piano accompaniment includes a section marked 'alle' and another marked 'pp'. The bottom staff shows a bass line with a few notes.

Free

Handwritten musical score for piano, featuring complex rhythmic patterns and dynamic markings like p133 and #p133. The score is written on a grand staff with treble and bass clefs. It includes various notes, rests, and dynamic markings such as p133 and #p133. There are also some circled markings and accents.

Ad lib (ganz frei)

Handwritten musical score for flute, marked "Ad lib (ganz frei)". It shows melodic lines with dynamic markings pp and f. The notation includes various notes, rests, and slurs.

Handwritten musical score for piano, featuring complex rhythmic patterns and dynamic markings like pp. The notation includes various notes, rests, and slurs.

Handwritten musical score for piano, featuring complex rhythmic patterns and dynamic markings like pp and ppp. The word "Lunga" is written above the notation. The notation includes various notes, rests, and slurs.

Leute ( ) Teil 4

Handwritten musical score for strings, measures 1-2. The score is written for Violin I, Violin II, and Cello/Double Bass. It features dynamic markings like *ff* and *pp*, and includes circled numbers 14 and 15.

Handwritten musical score for strings, measures 3-4. The score is written for Violin I, Violin II, and Cello/Double Bass. It features dynamic markings like *fp* and *pp*, and includes accents (^).

Handwritten musical score for the first system. The top staff is for the flute, starting with a dynamic marking of *pp* and a circled number 82. The bottom staff is for the piano accompaniment, with a circled number 82 at the end of the first measure.

Handwritten musical score for the second system. The top staff is for the flute, starting with a dynamic marking of *pp* and a circled number 82. The bottom staff is for the piano accompaniment, with a circled number 82 at the end of the first measure and a dynamic marking of *f = pp* in the second measure.

Handwritten musical score for the third system. The top staff is for the flute, starting with a dynamic marking of *pp* and a circled number 82. The bottom staff is for the piano accompaniment, with a circled number 82 at the end of the first measure and a dynamic marking of *pp* in the second measure.



Handwritten musical score for the first system. The piano part (left hand) contains notes with dynamics *pp* and *ppp*. The right hand part has notes with dynamics *pp* and *p*. The system is divided into two measures by a vertical bar line.

Handwritten musical score for the second system. The piano part (left hand) has notes with dynamics *#p* and *p*. The right hand part has notes with dynamics *p* and *p*. The system is divided into two measures by a vertical bar line.

Handwritten musical score for the third system. The piano part (left hand) has notes with dynamics *pp* and *p*. The right hand part has notes with dynamics *pp* and *p*. A *Solo* marking is present above the right hand part. The system is divided into three measures by vertical bar lines.

Handwritten musical score for the first system. The top staff is for the flute, and the bottom staff is for the strings. The flute part begins with a melodic line containing notes with accidentals (sharps and flats) and dynamic markings such as *f* and *ppp*. The string part is mostly silent, indicated by horizontal lines, with some notes in the lower register. Vertical bar lines divide the system into measures.

Handwritten musical score for the second system. The flute part continues with a melodic line, featuring a circled note at the end of the system. The string part remains mostly silent. The notation includes various accidentals and dynamic markings like *ppp* and *mf*. Vertical bar lines are present throughout the system.

Handwritten musical score for the first system. The system consists of three measures. The top staff (treble clef) contains a long melodic line with dynamics *ppp* and *d.*. The middle staff (piano) has a complex chordal texture with markings like *ppp*, *offen*, and *solo*. The bottom staff (bass) has a simple accompaniment with markings like *offen* and *ppp*.

Handwritten musical score for the second system. The system consists of two measures. The top staff (treble clef) has a complex melodic line with markings like *ppp* and *offen*. The middle staff (piano) has a complex chordal texture with markings like *ppp* and *offen*. The bottom staff (bass) has a simple accompaniment with markings like *ppp* and *offen*.

Handwritten musical score for the third system. The system consists of two measures. The top staff (treble clef) is empty. The middle staff (piano) and bottom staff (bass) are empty, with the instruction *CON SORD.* written in the piano and bass staves.

CONCORD.

Handwritten musical score for the first system. The score is written on five staves. The top staff has a treble clef and a key signature of one flat. The second staff has a treble clef. The third staff has a treble clef and contains handwritten notes: 'p:', 'p:', and 'p:'. The fourth staff has a treble clef and contains handwritten notes: 'p:', 'p:', and 'p:'. The fifth staff has a treble clef and contains handwritten notes: 'p:', 'p:', and 'p:'. The score is divided into three measures by vertical bar lines. The first measure contains a whole note on the second line of the treble clef. The second measure contains a whole note on the second line of the treble clef. The third measure contains a whole note on the second line of the treble clef. The score ends with a double bar line and a 'C' time signature.

Ten empty musical staves for the second system of the score.