

L.v. BEETHOVEN



W.A. MOZART



NOTENHEFT

F. SCHUBERT



J. HAYDN



J. STRAUSS



(r) lento Teil 1

Handwritten musical score for the first system of 'Teil 1'. The score is written for three staves: a single staff at the top and a grand staff (piano and bass) below. The top staff begins with a treble clef and a key signature of one flat (B-flat). It contains a series of notes, some beamed together, with dynamic markings 'pp' and 'f'. The grand staff begins with a bass clef for the piano part and a treble clef for the bass part. The piano part has a key signature of one flat and contains notes with dynamic markings 'ppp' and 'pp'. The bass part has a key signature of one flat and contains notes with dynamic markings 'pp' and 'ppp'. The system concludes with a double bar line.

Handwritten musical score for the second system of 'Teil 1'. The score is written for three staves: a single staff at the top and a grand staff (piano and bass) below. The top staff begins with a treble clef and a key signature of one flat. It contains notes with dynamic markings 'pp', 'f', and 'f ='. The grand staff begins with a bass clef for the piano part and a treble clef for the bass part. The piano part has a key signature of one flat and contains notes with dynamic markings 'pp', 'f', and 'f ='. The bass part has a key signature of one flat and contains notes with dynamic markings 'pp', 'f', and 'f ='. The system concludes with a double bar line.

Handwritten musical score for the first system. The top staff is for the flute, showing a melodic line with various accidentals (flats, sharps, naturals) and a final measure with a double bar line. The bottom staves are for the piano accompaniment, with a grand staff (treble and bass clef). The piano part includes a bass line with a 37-measure rest and a treble line with a 37-measure rest. Dynamic markings include *pp* and *ppp*.

Handwritten musical score for the second system. The top staff continues the flute melody. The piano accompaniment features a grand staff with a bass line and a treble line. The piano part includes a bass line with a 37-measure rest and a treble line with a 37-measure rest. Dynamic markings include *pp* and *ppp*.

Handwritten musical score for the first system. The notation includes staves for Flute, Violin, Viola, and Cello/Double Bass. Dynamics such as *pp* (pianissimo) and *f* (forte) are indicated. There are also handwritten notes like "Solo" and "con SORD." (con sordina).

Handwritten musical score for the second system. The notation continues the previous system. Dynamics such as *pp* and *f* are indicated. There are also handwritten notes like "Solo" and "alle arco" (all arco).

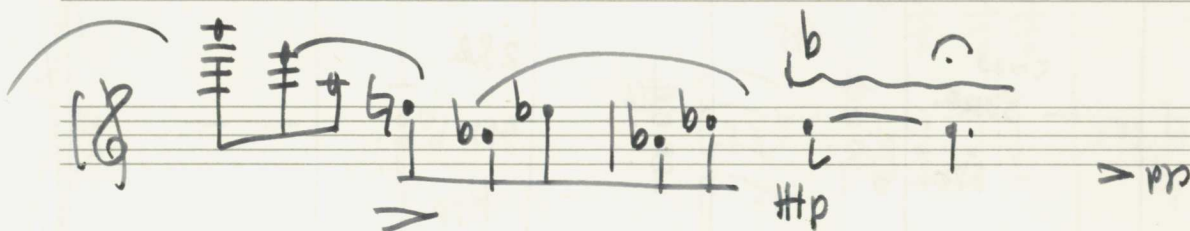
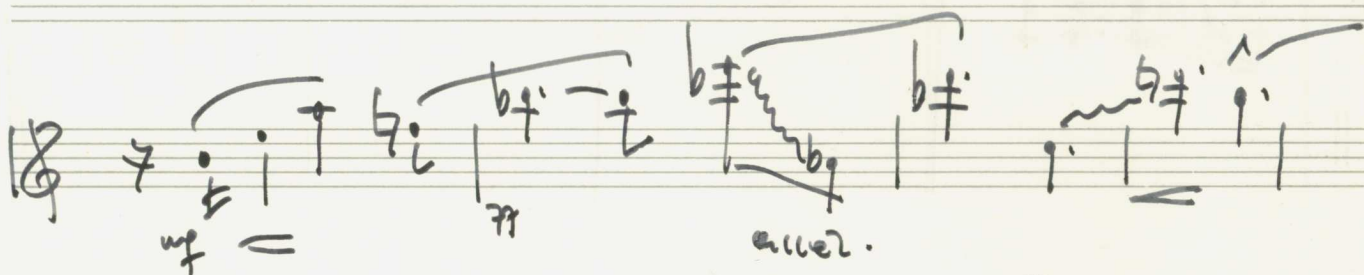
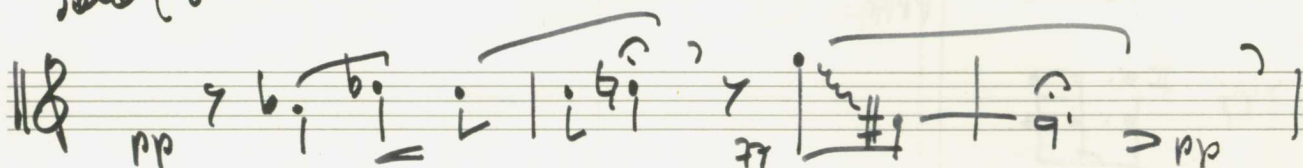
Handwritten musical score for the first system. The top staff is for the flute, showing a wavy line and a series of notes. The bottom three staves are for the string quartet (Violin I, Violin II, Viola/Cello/Bass). The notation includes various musical symbols such as clefs, notes, rests, and dynamic markings like *ppp*.

Handwritten musical score for the second system. The top staff is for the flute, showing a series of notes and a trill. The bottom three staves are for the string quartet. The notation includes various musical symbols such as clefs, notes, rests, and dynamic markings like *ppp*, *f*, and *pp*. The word "Fine" is written at the end of the system.

(letzte + großes gut...) und A.)

Teil 2

Sehe (ganz frei) (mit Herz) laut sprechen -



hoch

oder ruhig

folgt Teil I.

Teil 3

Allegro con brio

Handwritten musical score for the first system. The top staff features a series of chords and a melodic line with a sharp sign. The middle staves (violin and viola) contain complex rhythmic patterns with slurs and accents. The bottom staff (cello/bass) has a melodic line with slurs and a final double bar line. Dynamics include *pp* and *arco*.

Handwritten musical score for the second system. The top staff continues the melodic and harmonic material. The middle staves show more complex rhythmic figures with slurs and accents. The bottom staff features a melodic line with slurs and a final double bar line. Dynamics include *pp*, *arco*, and *f*.

Handwritten musical score for the first system. The top staff is for the flute, showing a melodic line with various accidentals (sharps, flats, naturals) and dynamic markings like *f* and *pp*. The bottom staves represent the piano accompaniment, with notes and rests in both hands. The system is divided into three measures by vertical bar lines.

Handwritten musical score for the second system. The top staff continues the flute melody, ending with a wavy line indicating a trill or a rapid oscillation. The piano accompaniment continues with notes and rests. The system is divided into three measures by vertical bar lines.

Handwritten musical score for the first system. The flute part begins with a rest, followed by a melodic line starting on a whole note G4, moving through A4, B4, and C5, ending with a fermata. The piano accompaniment starts with a rest, then enters with a series of eighth notes in the right hand and a single note in the left hand. Dynamic markings include *pp=* and *pp<*. There are also some handwritten annotations like *7 7 7* and *arco*.

Handwritten musical score for the second system. It continues the flute and piano parts from the first system. The flute part continues its melodic line with a fermata. The piano accompaniment continues with eighth notes in the right hand and a single note in the left hand. A *Cello solo* marking is present in the piano part. The system ends with a final chord in the piano part.

Handwritten musical score for the first system. The notation includes a treble clef, a key signature of one sharp (F#), and a common time signature. The melody is written in a complex, chromatic style with many accidentals. A dynamic marking 'pp' is present. The bass staff contains a simple accompaniment with a few notes and rests. The system is divided into three measures by vertical bar lines.

Handwritten musical score for the second system. It continues the melody from the first system. The treble staff shows a continuation of the chromatic melody with various dynamics like 'pp' and 'f'. The bass staff has a few notes and rests. The system is divided into three measures by vertical bar lines.

Handwritten musical score for the first system. The top staff is for the flute, showing rapid sixteenth-note passages. The bottom staves are for the piano, with a left hand playing chords and a right hand playing a melodic line. The piano part includes markings like 'p' and 'f'.

Handwritten musical score for the second system. The top staff continues the flute part. The bottom staves continue the piano accompaniment. The piano part has a 'cresc.' marking and the word 'alle' appears in the right hand.

Frei

Handwritten musical score for a piano and flute. The score is written on five staves. The top staff is for the flute, and the bottom four staves are for the piano. The music is in a key with one flat (B-flat) and a 3/4 time signature. The piano part features complex chords and arpeggios, while the flute part has melodic lines with some grace notes. There are various performance markings such as 'p133', 'pp', and 'f'.

Ad lib (ganz frei)

Handwritten musical score for a flute, continuing the 'Ad lib' section. It is written on a single staff in treble clef. The music is in the same key and time signature as the previous section. It features a melodic line with some grace notes and a final cadence. Performance markings include 'pp' and 'f'.

Handwritten musical score for a piano, continuing the 'Ad lib' section. It is written on a single staff in treble clef. The music is in the same key and time signature as the previous section. It features a complex chordal texture with some grace notes and a final cadence. Performance markings include 'pp' and 'f'.

Handwritten musical score for a piano, continuing the 'Ad lib' section. It is written on a single staff in treble clef. The music is in the same key and time signature as the previous section. It features a complex chordal texture with some grace notes and a final cadence. Performance markings include 'pp' and 'ppp'.

Leute ()

Teil 4

Handwritten musical score for a string quartet, measures 1-2. The score is written on four staves. The first staff (Violin I) has a treble clef and a key signature of one flat (B-flat). It contains a half note B-flat, a quarter note A, a quarter note G, a quarter note F, a quarter note E, a quarter note D, a quarter note C, and a quarter note B. The second staff (Violin II) has a treble clef and a key signature of one flat. It contains a half note B-flat, a quarter note A, a quarter note G, a quarter note F, a quarter note E, a quarter note D, a quarter note C, and a quarter note B. The third staff (Viola) has a treble clef and a key signature of one flat. It contains a half note B-flat, a quarter note A, a quarter note G, a quarter note F, a quarter note E, a quarter note D, a quarter note C, and a quarter note B. The fourth staff (Cello/Double Bass) has a bass clef and a key signature of one flat. It contains a half note B-flat, a quarter note A, a quarter note G, a quarter note F, a quarter note E, a quarter note D, a quarter note C, and a quarter note B. There are various annotations, including circled numbers (1, 2, 3, 4), dynamic markings (ff, pp), and slurs.

Handwritten musical score for a string quartet, measures 3-4. The score is written on four staves. The first staff (Violin I) has a treble clef and a key signature of one flat. It contains a half note B-flat, a quarter note A, a quarter note G, a quarter note F, a quarter note E, a quarter note D, a quarter note C, and a quarter note B. The second staff (Violin II) has a treble clef and a key signature of one flat. It contains a half note B-flat, a quarter note A, a quarter note G, a quarter note F, a quarter note E, a quarter note D, a quarter note C, and a quarter note B. The third staff (Viola) has a treble clef and a key signature of one flat. It contains a half note B-flat, a quarter note A, a quarter note G, a quarter note F, a quarter note E, a quarter note D, a quarter note C, and a quarter note B. The fourth staff (Cello/Double Bass) has a bass clef and a key signature of one flat. It contains a half note B-flat, a quarter note A, a quarter note G, a quarter note F, a quarter note E, a quarter note D, a quarter note C, and a quarter note B. There are various annotations, including circled numbers (1, 2, 3, 4), dynamic markings (ff, pp), and slurs.

Handwritten musical score for the first system, measures 1-3. The system includes a Flute part (treble clef), a Violin part (treble clef), and a Cello/Double Bass part (bass clef). The Flute part starts with a piano (pp) dynamic and a sharp sign. The Cello/Double Bass part has a rhythmic pattern of eighth notes.

Handwritten musical score for the second system, measures 4-6. The system includes a Flute part (treble clef), a Violin part (treble clef), and a Cello/Double Bass part (bass clef). The Flute part has a circled '22' and a piano (pp) dynamic. The Cello/Double Bass part has a circled '22' and a piano (pp) dynamic.

Handwritten musical score for the third system, measures 7-9. The system includes a Flute part (treble clef), a Violin part (treble clef), and a Cello/Double Bass part (bass clef). The Flute part has a circled '21' and a piano (pp) dynamic. The Cello/Double Bass part has a circled '21' and a piano (pp) dynamic.

Handwritten musical score for the first system, measures 1-2. The system consists of three staves. The top staff is a treble clef with a key signature of one flat (B-flat). It contains a half note G² (G4) with a *pp* dynamic, followed by a half note B-flat (B3) with a *ppp* dynamic, and a half note D³ (D4) with a *pp* dynamic. The middle staff is a bass clef with a key signature of one flat (B-flat). It contains a half note G² (G4) with a *ppp* dynamic, followed by a half note B-flat (B3) with a *ppp* dynamic, and a half note D³ (D4) with a *ppp* dynamic. The bottom staff is a bass clef with a key signature of one flat (B-flat). It contains a half note G² (G4) with a *ppp* dynamic, followed by a half note B-flat (B3) with a *ppp* dynamic, and a half note D³ (D4) with a *ppp* dynamic. The system is divided into two measures by a vertical bar line.

Handwritten musical score for the second system, measures 3-4. The system consists of three staves. The top staff is a treble clef with a key signature of one flat (B-flat). It contains a half note G² (G4) with a *pp* dynamic, followed by a half note B-flat (B3) with a *pp* dynamic, and a half note D³ (D4) with a *pp* dynamic. The middle staff is a bass clef with a key signature of one flat (B-flat). It contains a half note G² (G4) with a *ppp* dynamic, followed by a half note B-flat (B3) with a *ppp* dynamic, and a half note D³ (D4) with a *ppp* dynamic. The bottom staff is a bass clef with a key signature of one flat (B-flat). It contains a half note G² (G4) with a *ppp* dynamic, followed by a half note B-flat (B3) with a *ppp* dynamic, and a half note D³ (D4) with a *ppp* dynamic. The system is divided into two measures by a vertical bar line.

Handwritten musical score for the third system, measures 5-7. The system consists of three staves. The top staff is a treble clef with a key signature of one flat (B-flat). It contains a half note G² (G4) with a *pp* dynamic, followed by a half note B-flat (B3) with a *pp* dynamic, and a half note D³ (D4) with a *pp* dynamic. The middle staff is a bass clef with a key signature of one flat (B-flat). It contains a half note G² (G4) with a *ppp* dynamic, followed by a half note B-flat (B3) with a *ppp* dynamic, and a half note D³ (D4) with a *ppp* dynamic. The bottom staff is a bass clef with a key signature of one flat (B-flat). It contains a half note G² (G4) with a *ppp* dynamic, followed by a half note B-flat (B3) with a *ppp* dynamic, and a half note D³ (D4) with a *ppp* dynamic. The system is divided into three measures by two vertical bar lines.

Handwritten musical score for the first system. The top staff is for the flute, and the bottom staff is for the string orchestra. The flute part begins with a treble clef and a key signature of one sharp (F#). It features a melodic line with notes G4, A4, B4, and C5, with dynamic markings *f* and *ppp*. The string orchestra part is in 4/4 time and includes a bass line with notes G2, F2, and E2, and a treble line with notes G4, A4, and B4. The system is divided into four measures by vertical bar lines.

Handwritten musical score for the second system. The top staff is for the flute, and the bottom staff is for the string orchestra. The flute part continues with a melodic line, including a trill on G4. The string orchestra part includes a bass line with notes G2, F2, and E2, and a treble line with notes G4, A4, and B4. The system is divided into four measures by vertical bar lines.

Handwritten musical score for the first system. The top staff is for the flute, marked with a treble clef and a key signature of one flat (B-flat). It begins with a *ppp* dynamic and a half note B-flat. A slur connects this to a half note G in the second measure, a half note F in the third, and a half note E in the fourth. The fourth measure is marked *offen* and includes a triplet of eighth notes (D, C, B). The bottom staff is for the piano, with a grand staff (treble and bass clefs). It has rests in the first three measures. In the fourth measure, it features a triplet of eighth notes (D, C, B) and a half note E, marked *offen* and *q2*. There are also some handwritten notes like "Solo" and "ppp" in the piano part.

Handwritten musical score for the second system. The top staff (flute) continues with a triplet of eighth notes (D, C, B) and a half note E, marked *ppp* and *add*. It then features a complex passage with many accidentals and a triplet of eighth notes (D, C, B). The bottom staff (piano) has a half note E in the first measure, followed by a half note D in the second, and a half note C in the third. The fourth measure has a half note B and a half note A, marked *ppp* and *add*.

Handwritten musical score for the third system. It consists of three empty staves. The top staff is marked *con sord.* (con sordina). The middle staff is marked *con sord.* The bottom staff is marked *con sord.*

consord.

Handwritten musical score for the first system. The score is written on five staves. The first staff has a treble clef and a key signature of one sharp (F#). The second staff has a treble clef and a key signature of one sharp. The third staff has a treble clef and a key signature of one sharp, with a circled 'c' and a 'p' below it. The fourth staff has a treble clef and a key signature of one sharp, with a circled 'c' and a 'p' below it. The fifth staff has a treble clef and a key signature of one sharp. The score is divided into three measures by vertical bar lines. The first measure contains a whole note on the second line of the first staff. The second measure contains a whole note on the second line of the first staff, with a circled 'c' and a 'p' below it. The third measure contains a whole note on the second line of the first staff, with a circled 'c' and a 'p' below it. The score ends with a double bar line and a 'C' time signature.

Seven empty musical staves for the second system of the score.