

L.v. BEETHOVEN



W.A. MOZART



NOTENHEFT

F. SCHUBERT



J. HAYDN

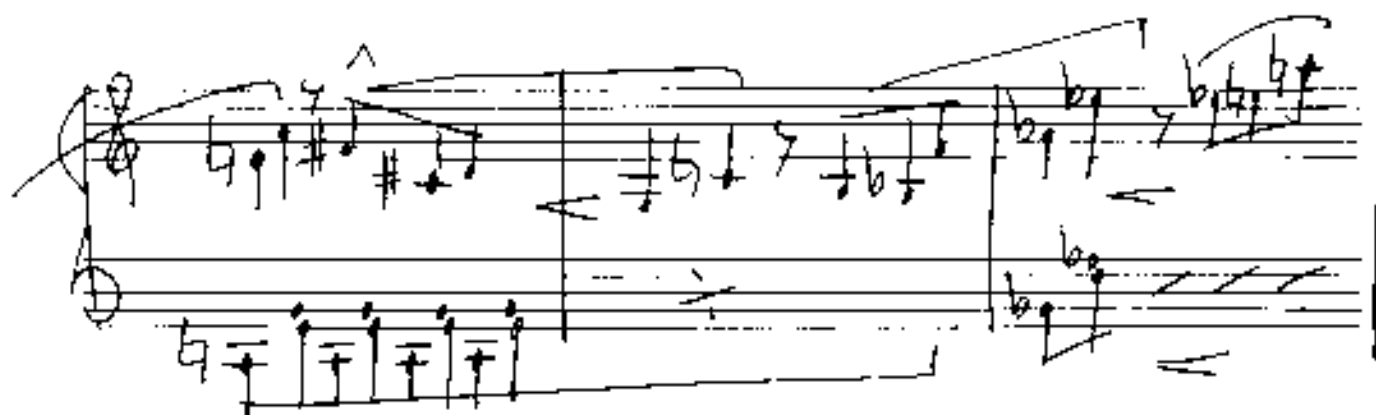


J. STRAUSS



Musica agitata

(marcato)





lento (schlecht)

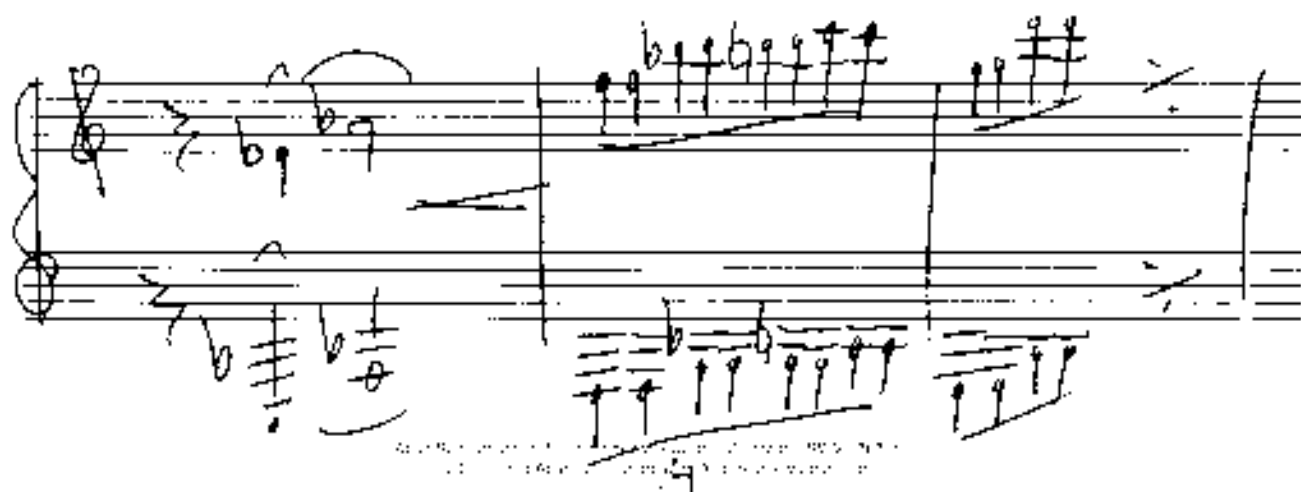
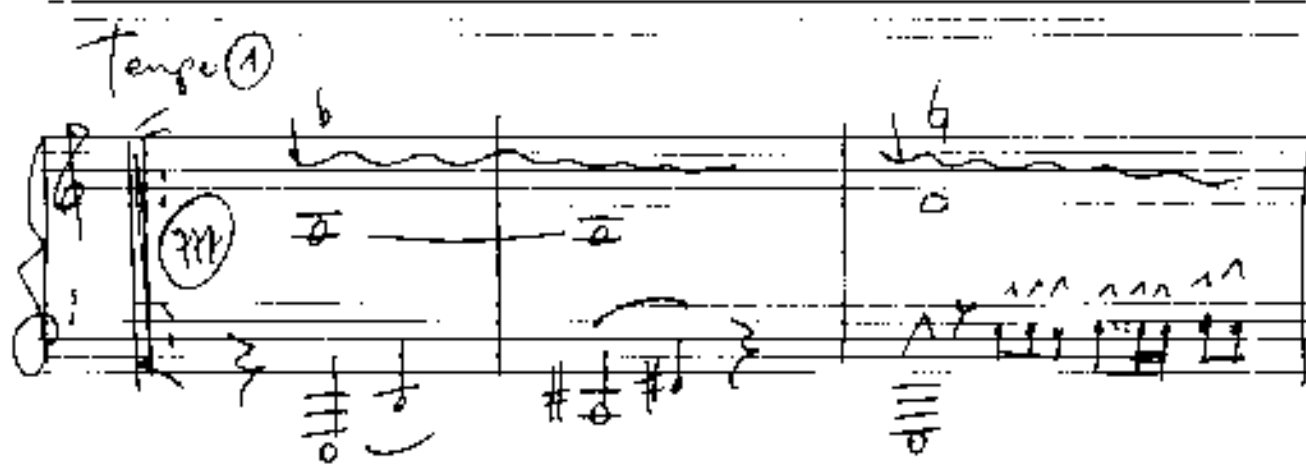


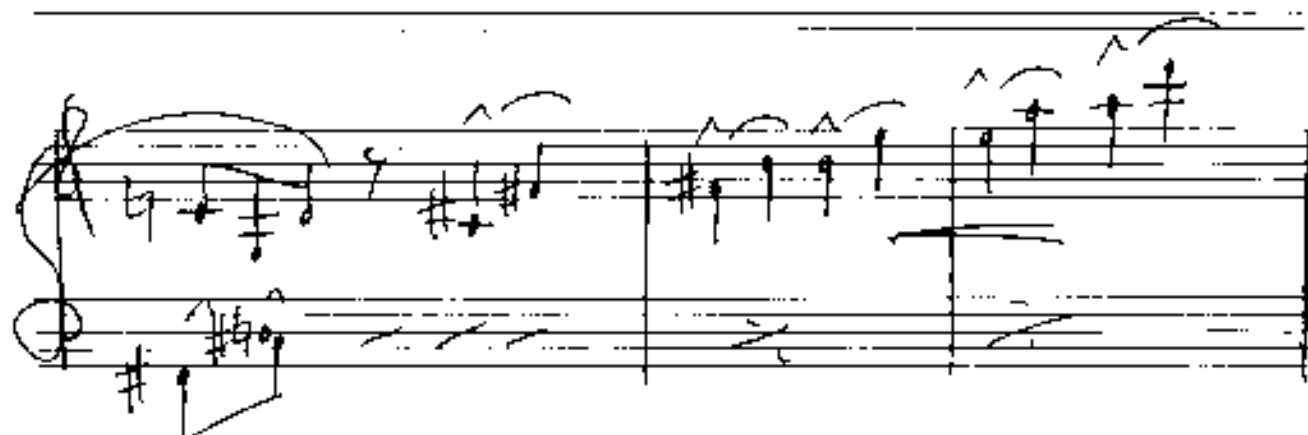
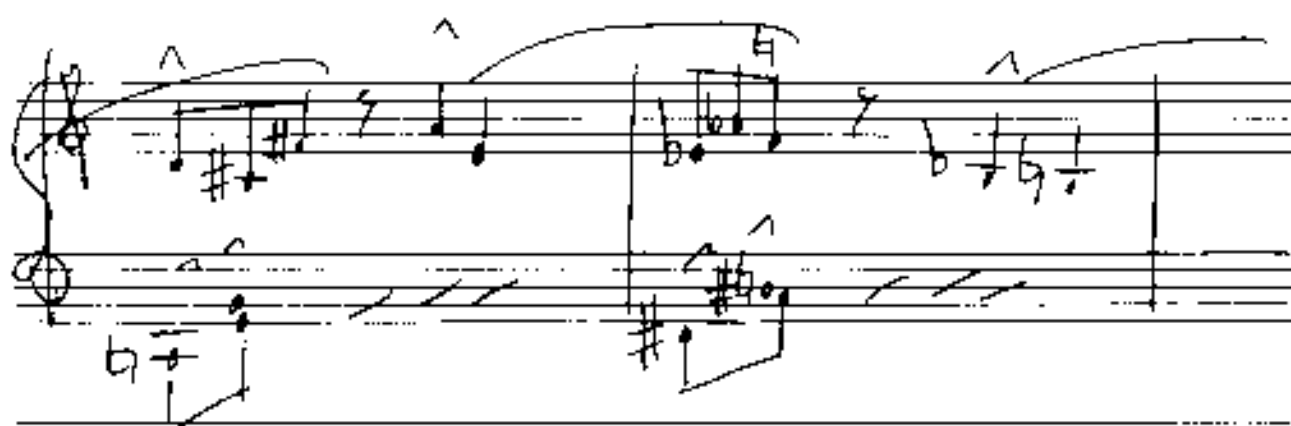
Handwritten musical notation on a grand staff. The treble clef staff begins with a circled 'p' and a 3/4 time signature. The melody consists of eighth and quarter notes, with a slur over the first four notes and an accent (^) over the fifth. The bass clef staff contains a bass line with a 4/4 time signature, featuring a half note and a quarter note. A slur connects the two staves.

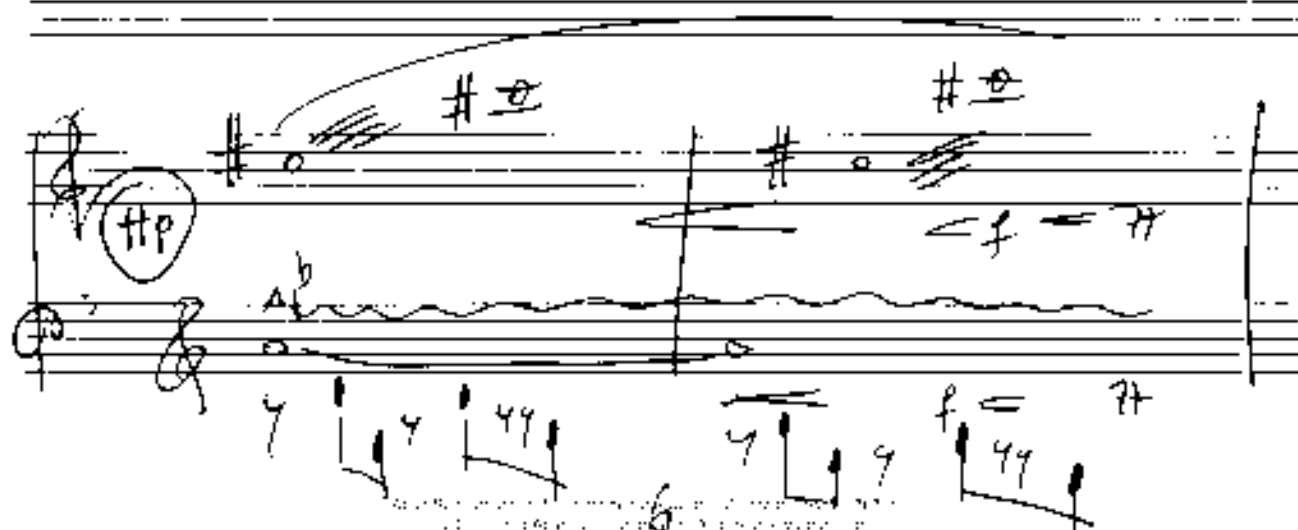
Handwritten musical notation on a grand staff. The treble clef staff starts with a circled 'f' and a 4/4 time signature. The melody is marked with a slur and an accent (^). The bass clef staff has a bass line with a 4/4 time signature, marked with a slur and an accent (^). A dynamic marking 'f' is present in the middle of the system.

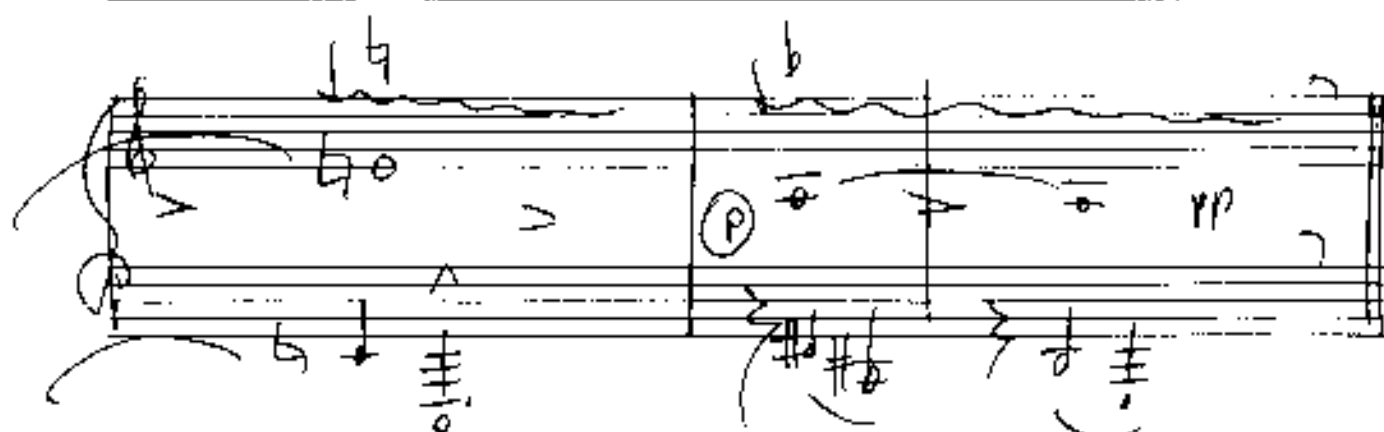
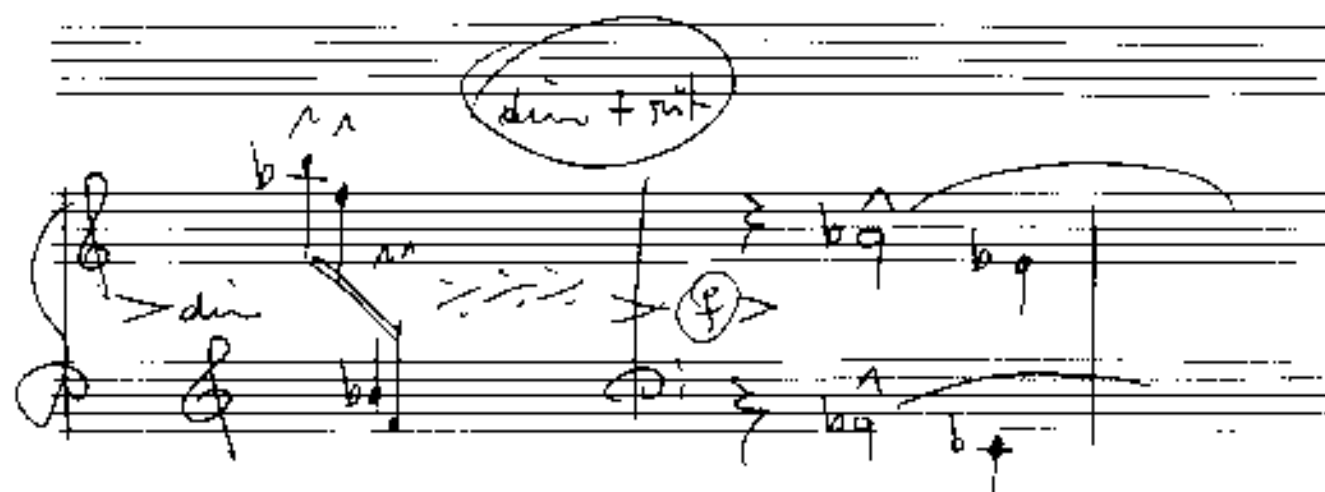
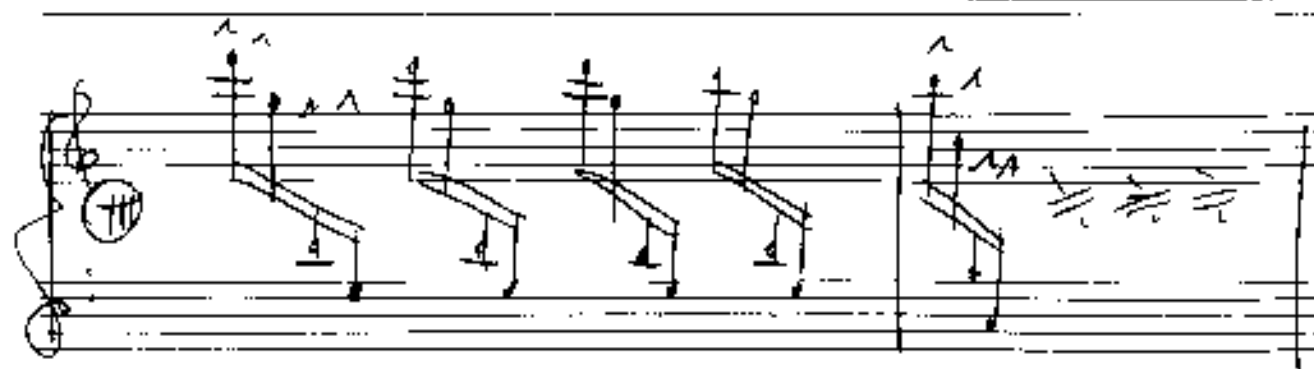
Handwritten musical notation on a grand staff. The treble clef staff begins with a circled 'f' and a 4/4 time signature. The melody is marked with a slur and an accent (^). The bass clef staff has a bass line with a 4/4 time signature, marked with a slur and an accent (^). A dynamic marking 'f' is present in the middle of the system.

Handwritten musical notation on a grand staff. The treble clef staff begins with a circled 'f' and a 4/4 time signature. The melody is marked with a slur and an accent (^). The bass clef staff has a bass line with a 4/4 time signature, marked with a slur and an accent (^). A dynamic marking 'f' is present in the middle of the system.









lento (misterioso)

Handwritten musical notation for the first system. The music is in 3/4 time, marked 'lento (misterioso)' and 'pp'. The right hand plays a melody starting on G4, moving to A4, then B4, and finally C5. The left hand plays a bass line with chords: G2-B2-D3, A2-C3-E3, and B2-D3-F3. There are slurs over the bass line and a fermata over the final chord.

Handwritten musical notation for the second system. The right hand continues the melody with notes G4, A4, B4, and C5. The left hand plays chords: G2-B2-D3, A2-C3-E3, and B2-D3-F3. There are slurs over the bass line and a fermata over the final chord.

(Andante quasi)

Handwritten musical notation for the third system, marked '(Andante quasi)'. The right hand plays a melody starting on G4, moving to A4, then B4, and finally C5. The left hand plays chords: G2-B2-D3, A2-C3-E3, and B2-D3-F3. There are slurs over the bass line and a fermata over the final chord.

Handwritten musical notation for the fourth system. The right hand plays a melody starting on G4, moving to A4, then B4, and finally C5. The left hand plays chords: G2-B2-D3, A2-C3-E3, and B2-D3-F3. There are slurs over the bass line and a fermata over the final chord.

Hand 1 (1)

Hand 2

gr. dñ (poco rit)

so ruhig wie möglich

größer rit + dñ...

larga

2

lento

Handwritten musical score for 'The Rose Tree'. The score is written on two staves. The top staff is in treble clef with a key signature of one flat (B-flat) and a 4/4 time signature. The bottom staff is in bass clef with a key signature of one sharp (F-sharp) and a 4/4 time signature. The music is written in a simple, handwritten style. The first staff has a circled 'pp' (pianissimo) marking. The second staff has a circled 'ff' (fortissimo) marking. The music consists of a melody in the top staff and a bass line in the bottom staff. The melody is written in a simple, handwritten style. The bass line is written in a simple, handwritten style. The score is written on two staves. The top staff is in treble clef with a key signature of one flat (B-flat) and a 4/4 time signature. The bottom staff is in bass clef with a key signature of one sharp (F-sharp) and a 4/4 time signature. The music is written in a simple, handwritten style. The first staff has a circled 'pp' (pianissimo) marking. The second staff has a circled 'ff' (fortissimo) marking. The music consists of a melody in the top staff and a bass line in the bottom staff. The melody is written in a simple, handwritten style. The bass line is written in a simple, handwritten style.

A handwritten musical score for the song "The Rose Tree". The score is written on two staves. The top staff uses a treble clef and contains a melody with a key signature of one sharp (F#) and a 4/4 time signature. The bottom staff uses a bass clef and contains a bass line. The music is written in ink on aged paper. There are some annotations in the left margin, including a circled 'p' and a 'V'.

[illegible]

Handwritten musical notation for the first system, measures 1-2. The notation is in treble and bass clefs. Measure 1 features a circled 'f' in the bass staff and a circled 'ff' in the treble staff. Measure 2 features a circled 'ff' in the treble staff. The music includes various notes, rests, and dynamic markings.

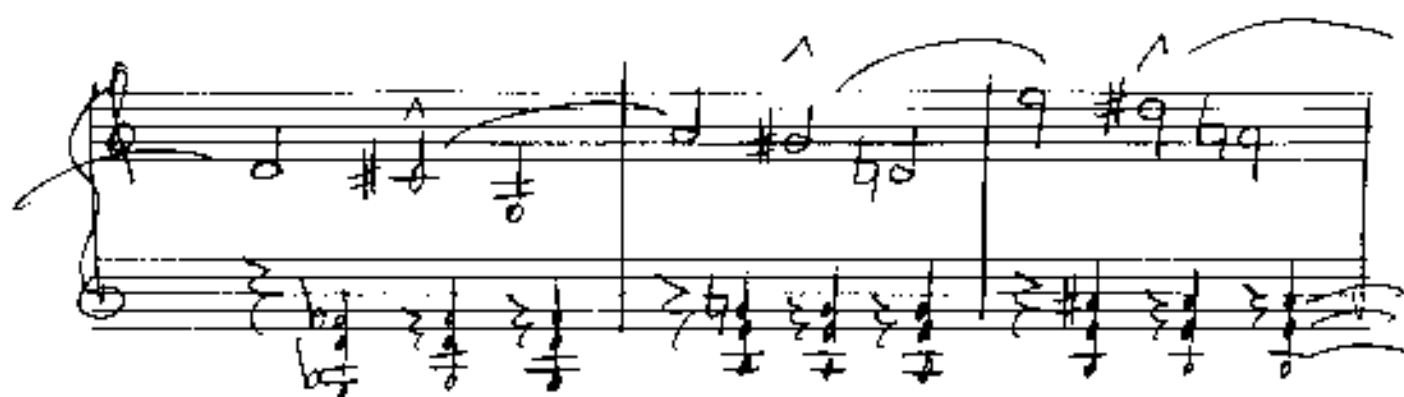
Handwritten musical notation for the second system, measures 3-4. The notation is in treble and bass clefs. Measure 3 features a circled 'ff' in the treble staff. Measure 4 features a circled 'ff' in the treble staff. The music includes various notes, rests, and dynamic markings.

Handwritten musical notation for the third system, measures 5-6. The notation is in treble and bass clefs. Measure 5 features a circled 'ff' in the treble staff. Measure 6 features a circled 'ff' in the treble staff. The music includes various notes, rests, and dynamic markings.

Handwritten musical notation for the fourth system, measures 7-8. The notation is in treble and bass clefs. Measure 7 features a circled 'ff' in the treble staff. Measure 8 features a circled 'ff' in the treble staff. The music includes various notes, rests, and dynamic markings.

(poco rit.)

Adagio



Handwritten musical notation for the first system. The top staff is in treble clef with a 3/4 time signature and a circled 'P'. It contains a melodic line with a slur over the first two measures and a fermata over the third. The bottom staff is in bass clef with a circled 'P' and contains a bass line with a slur and a fermata. There are some additional markings below the bass staff.

cresc.

Handwritten musical notation for the second system. The top staff is in treble clef with a circled 'P' and contains a melodic line with a slur and a fermata. The bottom staff is in bass clef with a circled 'P' and contains a bass line with a slur and a fermata. There are some additional markings below the bass staff.

Handwritten musical notation for the third system. The top staff is in treble clef with a circled 'P' and contains a melodic line with a slur and a fermata. The bottom staff is in bass clef with a circled 'P' and contains a bass line with a slur and a fermata. There are some additional markings below the bass staff.

Handwritten musical notation for the fourth system. The top staff is in treble clef with a circled 'P' and contains a melodic line with a slur and a fermata. The bottom staff is in bass clef with a circled 'P' and contains a bass line with a slur and a fermata. There are some additional markings below the bass staff.

And. Trem.

subito (permuta)

(permuta)

drängend

Handwritten musical notation for the first system, marked "drängend". The system consists of two staves. The upper staff is in treble clef and contains a melodic line with a sharp key signature (F#) and a fermata. The lower staff is in bass clef and contains a harmonic line with a sharp key signature (F#) and a fermata. The notation is written in a sketchy, handwritten style.

Handwritten musical notation for the second system. The system consists of two staves. The upper staff is in treble clef and contains a melodic line with a sharp key signature (F#) and a fermata. The lower staff is in bass clef and contains a harmonic line with a sharp key signature (F#) and a fermata. The notation is written in a sketchy, handwritten style.

accel.

Handwritten musical notation for the third system, marked "accel.". The system consists of two staves. The upper staff is in treble clef and contains a melodic line with a sharp key signature (F#) and a fermata. The lower staff is in bass clef and contains a harmonic line with a sharp key signature (F#) and a fermata. The notation is written in a sketchy, handwritten style.

rit. ~ ~ ~

Handwritten musical notation for the fourth system, marked "rit. ~ ~ ~". The system consists of two staves. The upper staff is in treble clef and contains a melodic line with a sharp key signature (F#) and a fermata. The lower staff is in bass clef and contains a harmonic line with a sharp key signature (F#) and a fermata. The notation is written in a sketchy, handwritten style.

frei (oder langsam)

