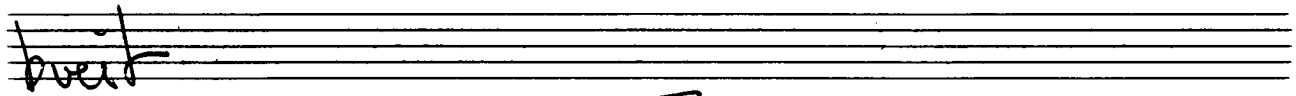
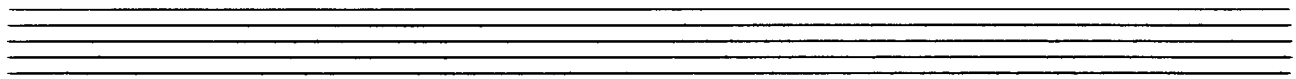
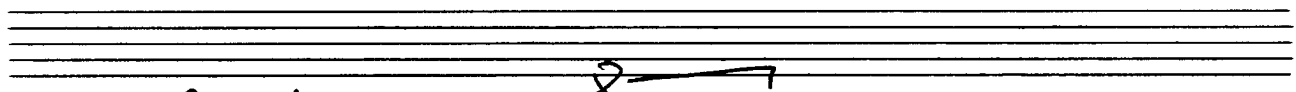


Notenheft



K
L
A
V
I
E
R

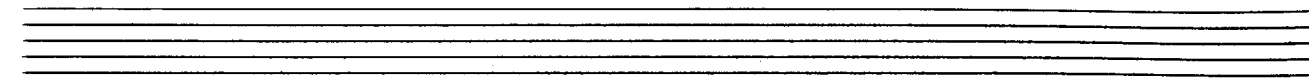
Schlagzeug
ad. et h.
(Solo Bass)



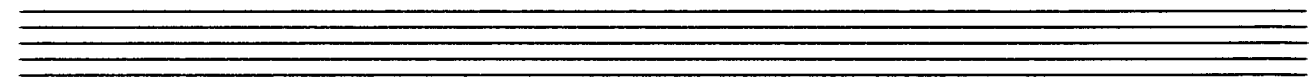
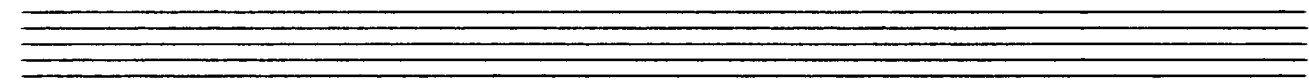
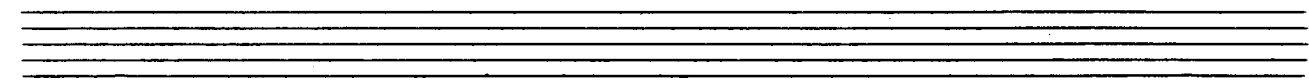
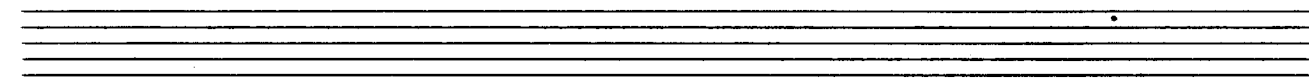
Handwritten musical notation for the first system. It consists of two staves. The upper staff is in treble clef and contains several measures of music with notes, rests, and dynamic markings such as 'f' and accents (^). The lower staff is in bass clef and contains corresponding notes and rests. The notation is somewhat sketchy and appears to be a working draft.

Handwritten musical notation for the second system. The upper staff features rhythmic patterns, including triplets of eighth notes, with some notes beamed together. The lower staff shows complex chord structures with many notes, some of which are beamed together. The notation is dense and appears to be a working draft.

Handwritten musical notation for the third system. It begins with the instruction "(2te x accel.)" written above a large arrow pointing to the right, indicating a tempo change. Below this, there are two staves of musical notation. The upper staff has notes and rests, with dynamic markings like "ppp" and "pp". The lower staff also contains notes and rests. The notation is somewhat sketchy and appears to be a working draft.



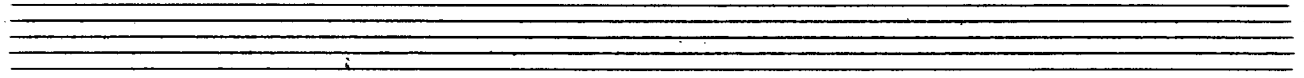
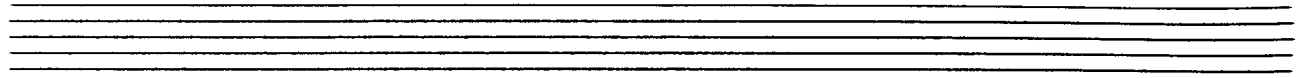
Adolf Scherbaum



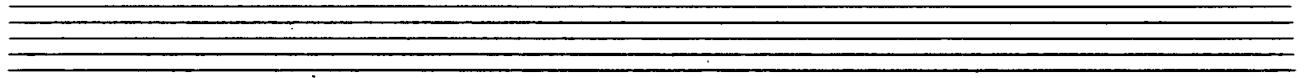
Handwritten musical notation for the first system. The system consists of two staves. The upper staff is in treble clef and contains several measures of music with notes, rests, and dynamic markings such as accents (^) and a hairpin. A circled sharp sign (#) is present in the second measure. The lower staff is in bass clef and contains corresponding notes and rests. The system concludes with a double bar line.

Handwritten musical notation for the second system. The system consists of two staves. The upper staff is in treble clef and contains several measures of music with notes, rests, and dynamic markings such as accents (^) and a hairpin. The lower staff is in bass clef and contains corresponding notes and rests. The system concludes with a double bar line.

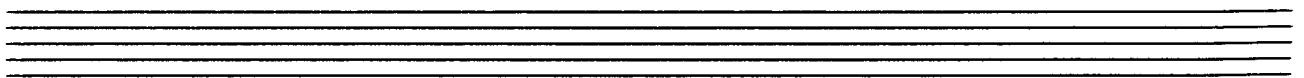
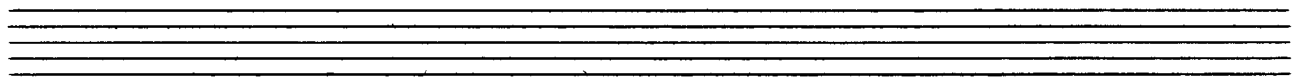
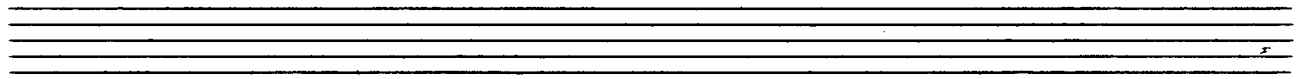
Handwritten musical notation for the third system. The system consists of two staves. The upper staff is in treble clef and contains several measures with mostly empty staves and a few notes. The lower staff is in bass clef and contains mostly empty staves and a few notes. The system concludes with a double bar line.



Handwritten musical notation for the first system. The top staff contains a treble clef with a melodic line of eighth notes, including a trill and a slur. The bottom staff contains a bass clef with a chordal accompaniment of eighth notes, including a trill and a slur. The system is divided into three measures by vertical bar lines.



Handwritten musical notation for the second system. The top staff contains a treble clef with a melodic line of eighth notes, including a trill and a slur. The bottom staff contains a bass clef with a chordal accompaniment of eighth notes, including a trill and a slur. The system is divided into three measures by vertical bar lines.



Handwritten musical notation for the first system. The treble clef staff begins with a key signature of one flat (B-flat) and a 7/8 time signature. The melody consists of eighth and sixteenth notes, with slurs and accents. The bass staff contains whole rests.

Handwritten musical notation for the second system. The treble clef staff continues the melody with slurs and accents. The bass staff has some notes and rests.

Handwritten musical notation for the third system. The treble clef staff concludes the piece with slurs and accents. The bass staff has some notes and rests.

Handwritten musical score for the first system. The treble clef staff contains a sequence of notes: a quarter note G4, a quarter note A4, a quarter note B4, a quarter note C5, a quarter note B4, a quarter note A4, and a quarter note G4. The bass clef staff contains a whole rest, followed by a quarter note G3, a quarter note F3, a quarter note E3, and a quarter note D3. There are dynamic markings and slurs throughout the system.

Handwritten musical score for the second system. The treble clef staff contains a sequence of notes: a quarter note G4, a quarter note A4, a quarter note B4, a quarter note C5, a quarter note B4, a quarter note A4, and a quarter note G4. The bass clef staff contains a whole rest, followed by a quarter note G3, a quarter note F3, a quarter note E3, and a quarter note D3. There are dynamic markings and slurs throughout the system.

Handwritten musical score for the third system. The treble clef staff contains a sequence of notes: a quarter note G4, a quarter note A4, a quarter note B4, a quarter note C5, a quarter note B4, a quarter note A4, and a quarter note G4. The bass clef staff contains a whole rest, followed by a quarter note G3, a quarter note F3, a quarter note E3, and a quarter note D3. There are dynamic markings and slurs throughout the system.

Handwritten musical notation for the first system. The treble staff contains a melodic line with notes and rests, including a slur over the first two measures and an accent (^) over the final note. The bass staff contains a bass line with notes and rests, including a slur over the first two measures. A sharp sign (#) is written above the first measure of the bass staff. Chord symbols are written above the first measure of both staves: $\text{b}^{\flat} \text{b}^{\flat} \text{b}^{\flat} \text{b}^{\flat}$ in the treble and $\text{b}^{\flat} \text{b}^{\flat} \text{b}^{\flat} \text{b}^{\flat}$ in the bass.

Handwritten musical notation for the second system. The treble staff contains a melodic line with notes and rests, including a slur over the first two measures and a final fermata. The bass staff contains a bass line with notes and rests, including a slur over the first two measures and a final fermata. Chord symbols are written above the treble staff: $\text{b}^{\flat} \text{b}^{\flat} \text{b}^{\flat} \text{b}^{\flat}$, $\text{b}^{\flat} \text{b}^{\flat} \text{b}^{\flat} \text{b}^{\flat}$, $\text{b}^{\flat} \text{b}^{\flat} \text{b}^{\flat} \text{b}^{\flat}$, and $\text{b}^{\flat} \text{b}^{\flat} \text{b}^{\flat} \text{b}^{\flat}$. Dynamic markings include b^{\flat} and b^{\flat} in the bass staff.

Handwritten musical notation for the third system. The treble staff contains a melodic line with notes and rests, including a slur over the first two measures and a final fermata. The bass staff contains a bass line with notes and rests, including a slur over the first two measures and a final fermata. Chord symbols are written above the first measure of both staves: $\text{b}^{\flat} \text{b}^{\flat} \text{b}^{\flat} \text{b}^{\flat}$ in the treble and $\text{b}^{\flat} \text{b}^{\flat} \text{b}^{\flat} \text{b}^{\flat}$ in the bass.

Handwritten musical score for the first system. The treble clef staff begins with a circled 'F#' and contains several chords with upward accents (^) above them. The bass clef staff contains a key signature of one flat (Bb) and corresponding chords. The system concludes with three measures of chords in both staves.

Handwritten musical score for the second system. The treble clef staff contains a melodic line with eighth notes and upward accents (^) above it. The bass clef staff contains a key signature of one flat (Bb) and rests in the first two measures, followed by a chord in the third measure.

Handwritten musical score for the third system. The treble clef staff contains several chords with upward accents (^) above them. The bass clef staff contains corresponding chords. The system concludes with three measures of chords in both staves.

Handwritten musical notation for the first system. The treble clef staff contains a circled 'F' with a double bar line, followed by a melodic line with a flat sign, a sharp sign, and three accents (^). The bass clef staff has a sharp sign (#) and a double bar line.

Handwritten musical notation for the second system. The treble clef staff features a sharp sign (#) and a melodic line with accents (^). The bass clef staff contains a complex chordal texture with various accidentals (flats and sharps) and a double bar line.

Handwritten musical notation for the third system. The treble clef staff has a circled '8' with a double bar line, followed by a melodic line with a sharp sign and a double bar line. The bass clef staff has a sharp sign (#) and a melodic line with a double bar line.

Handwritten musical score for the first system. The treble clef staff contains a melodic line with slurs and accents (^) over notes. The bass clef staff contains a bass line with a dynamic marking of *pp* and some scribbled-out notes.

Handwritten musical score for the second system. The treble clef staff continues the melodic line with slurs and accents. The bass clef staff has a dynamic marking of *pp* and some scribbled-out notes.

Handwritten musical score for the third system. The treble clef staff includes the word "dir" written below the first measure. The bass clef staff has a dynamic marking of *pp* and includes slurs and accents over notes.

sempre cresc.

Handwritten musical notation for the first system. The treble clef staff is empty. The bass clef staff contains a wavy line across the first two measures, followed by a horizontal line in the third measure. Below the bass staff, there are four chord symbols: $\text{b} \parallel \parallel \phi$, $\parallel \parallel \phi$, $\parallel \parallel \phi$, and $\parallel \parallel \phi$. A downward-pointing arrow is above the first chord symbol, and a horizontal line is above the second chord symbol.

Handwritten musical notation for the second system. The treble clef staff contains a melodic line with accents (^) over the notes. A circled 'p' dynamic marking is at the beginning. The bass clef staff contains a horizontal line in the first measure, followed by two chords: $\text{b} \parallel \parallel \phi$ and $\text{b} \parallel \parallel \phi$. A downward-pointing arrow is above the first chord symbol, and a horizontal line is above the second chord symbol.

Handwritten musical notation for the third system. The treble clef staff contains a melodic line with accents (^) over the notes. A circled 'p' dynamic marking is at the beginning. The bass clef staff contains a horizontal line in the first measure, followed by two chords: $\text{b} \parallel \parallel \phi$ and $\text{b} \parallel \parallel \phi$. A downward-pointing arrow is above the first chord symbol, and a horizontal line is above the second chord symbol.

Handwritten musical notation for the first system. The treble clef staff contains notes with accents (^) and slurs. The bass clef staff contains chords with accidentals (sharps) and notes with accents (^). A dynamic marking 'f' is present in the second measure.

Handwritten musical notation for the second system. The treble clef staff has a circled sharp sign (#) and notes with slurs. The bass clef staff has notes with slurs. There are some vertical lines and markings between the staves.

Handwritten musical notation for the third system. The treble clef staff has notes with slurs and a double bar line at the end. The bass clef staff has notes with slurs. There are some vertical lines and markings between the staves.

Handwritten musical notation for the first system, featuring two staves with complex rhythmic and melodic markings, including a circled sharp sign and various note heads.

Handwritten musical notation for the second system, showing two staves with rhythmic patterns and vertical bar lines.

groß. rit

Handwritten musical notation for the third system, including a '4' in the bass staff, a 'C' time signature, and a large scribble at the end.

lento (mehr ruhig)

Handwritten musical score for the first system. The piano staff (top) begins with a circled *pp* dynamic marking. It contains a series of chords in the left hand and a melodic line in the right hand. The bass staff (bottom) contains a melodic line. The system concludes with a double bar line and a fermata over the final notes.

Handwritten musical score for the second system. The piano staff (top) continues with chords and a melodic line. The bass staff (bottom) continues with a melodic line. The system concludes with a double bar line and a fermata over the final notes.

Handwritten musical score for the first system. The treble staff contains a series of chords and notes, with a sharp sign (#) indicating a key signature change. The bass staff contains a series of notes, with a sharp sign (#) indicating a key signature change. The system is divided into two measures by a vertical bar line.

Handwritten musical score for the second system. The treble staff contains a series of chords and notes, with a dynamic marking of *mf* (mezzo-forte) and a sharp sign (#) indicating a key signature change. The bass staff contains a series of notes, with a dynamic marking of *f* (forte) and a sharp sign (#) indicating a key signature change. The system is divided into two measures by a vertical bar line.

Handwritten musical score for the third system. The treble staff contains a series of chords and notes, with a circled sharp sign (#) indicating a key signature change. The bass staff contains a series of notes, with a sharp sign (#) indicating a key signature change. The system is divided into two measures by a vertical bar line.

Handwritten musical score for the first system. The treble clef staff contains a melodic line with various accidentals and slurs. The bass clef staff contains a bass line with a circled 'p' dynamic marking and rhythmic notation.

Handwritten musical score for the second system. The treble clef staff contains a melodic line with various accidentals and slurs. The bass clef staff contains a bass line with a circled 'p' dynamic marking and rhythmic notation.

Handwritten musical score for the third system. The treble clef staff contains a melodic line with various accidentals and slurs. The bass clef staff contains a bass line with a circled 'p' dynamic marking and rhythmic notation.

Handwritten musical notation for the first system. The treble clef staff contains a melodic line with various accidentals and slurs. The bass clef staff contains chords, including a circled sharp sign (♯) and a circled bass clef (♭). There are dynamic markings such as > and <.

Handwritten musical notation for the second system. Both staves feature complex chordal structures with numerous accidentals (sharps, flats, naturals) and slurs. The notation is dense and appears to be a sketch or a complex harmonic exercise.

Handwritten musical notation for the third system. The notation is heavily scribbled over with large, sweeping lines, suggesting a deletion or a very expressive, gestural passage. A circled *pp* dynamic marking is visible in the middle of the system.

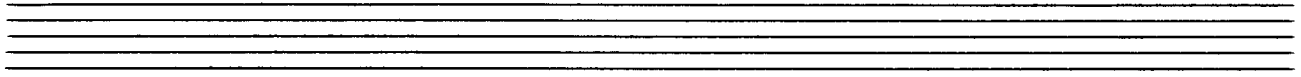
Handwritten musical score for the first system. The system consists of two staves. The upper staff is in treble clef and contains a series of notes with accidentals (sharps and flats) and a fermata. The lower staff is in bass clef and contains notes with accidentals, a circled 'p' dynamic marking, and a fermata. There are also some handwritten annotations above the notes, including a 'w' and a 'b'.

Handwritten musical score for the second system. The system consists of two staves. The upper staff is in treble clef and contains notes with accidentals, a circled 'p' dynamic marking, and a fermata. The lower staff is in bass clef and contains notes with accidentals and a fermata. The instruction "Cresce..." is written in the right-hand margin of the system.

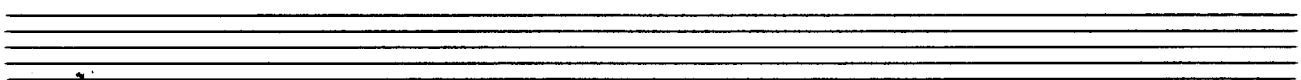
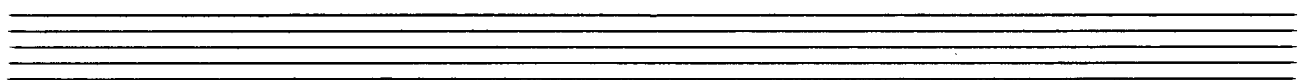
Handwritten musical score for the first system, featuring a grand staff with treble and bass clefs. The music includes various notes, rests, and dynamic markings. A circled *mf* is at the beginning, and circled *ff* markings appear at the end of each staff line.

Handwritten musical score for the second system, continuing the grand staff notation. It includes dynamic markings like *pp* and *f* in circles, and various rhythmic notations.

Handwritten musical score for the third system, showing a grand staff with complex rhythmic patterns and dynamic markings. A circled *pp* is on the left, and "2x (poco rit) ..." is written in the middle. On the right, there are handwritten notes: "D.c. bis hierher dann weiter" and "D.c. ohne ||:|:".



Tempo ① sehr ruhig



Handwritten musical notation for the first system. The system consists of two staves. The upper staff is in treble clef and contains a series of chords, starting with a key signature of one sharp (F#). The lower staff is in bass clef and contains a melodic line with eighth notes and a final phrase with a slur and a fermata.

Handwritten musical notation for the second system. The system consists of two staves. The upper staff is in treble clef and contains chords, with a dynamic marking of mp (mezzo-piano) at the beginning and f (forte) later. The lower staff is in bass clef and contains a melodic line with slurs and accents.

Handwritten musical notation for the third system. The system consists of two staves. The upper staff is in treble clef and contains complex chordal textures with many notes, including a key signature change to one flat (Bb). The lower staff is in bass clef and contains a melodic line with slurs and accents.

Flöte Solo

frei

rit-dim

Handwritten musical score for the first system. It consists of a treble clef staff and a grand staff (treble and bass clefs). The treble staff contains a melodic line with various ornaments like accents (^) and slurs, and dynamic markings including 'p' in a circle, 'f', and 'ff > pp'. The grand staff contains a bass line with a circled 'p' and a vertical sequence of notes with sharps and flats.

so ruhig als möglich

Handwritten musical score for the second system. It features a treble clef staff with a circled 'sf' dynamic marking and a grand staff. The grand staff contains a bass line with notes and a circled 'p'. To the right of the grand staff, there is a large, stylized handwritten flourish or signature.



Schlagzeug Solo (sehr rasch)

4/4 *pp* <

VAK

Handwritten musical score for the first system. It consists of two staves: a treble clef staff on top and a bass clef staff on the bottom. The treble staff contains several notes with accidentals (sharps and flats) and dynamic markings such as $\lt;math>f$, ff, and ff. The bass staff contains notes with accidentals and dynamic markings like ff and ff. There are also some handwritten annotations above the treble staff, including ff, ff, and ff.

Handwritten musical score for the second system. It consists of two staves: a treble clef staff on top and a bass clef staff on the bottom. The treble staff shows a melodic line with notes and accidentals, including a circled p marking. The bass staff contains notes with accidentals and a circled p marking. There are also some handwritten annotations, including ff and ff.

Handwritten musical score for the third system. It consists of two staves: a treble clef staff on top and a bass clef staff on the bottom. The treble staff contains notes with accidentals and dynamic markings like ff and ff. The bass staff contains notes with accidentals and dynamic markings like ff and ff. There are also some handwritten annotations, including ff and ff.

$f =$

Handwritten musical notation for the first system. The treble clef staff contains a melodic line with a key signature of one flat and a 3/4 time signature. The bass clef staff contains chords with flats and naturals.

Handwritten musical notation for the second system. The treble clef staff continues the melodic line with a key signature change to two flats and a 3/4 time signature. The bass clef staff contains chords with flats and naturals.

Handwritten musical notation for the third system, concluding the piece. The treble clef staff has a melodic line with a key signature of two flats and a 3/4 time signature. The bass clef staff contains chords with flats and naturals. The system ends with a double bar line and a fermata.

wieder
bis
hierher
dann
D.C.
ad

♩ *corda*

breit 19