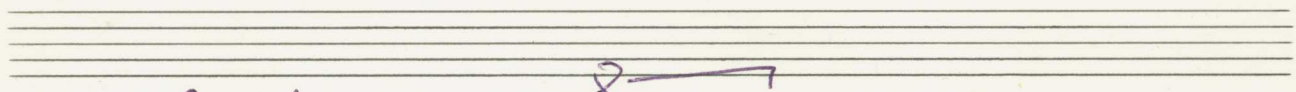


breit

KLAVIER

Schlagzeug  
ad. et al.  
(Solo Bass)



Handwritten musical notation for the first system, featuring a grand staff with treble and bass clefs. The music includes chords and melodic lines with accents (^) and a dynamic marking 'f'.

Handwritten musical notation for the second system, showing a grand staff with treble and bass clefs. It features a triplet of eighth notes in the treble clef and a bass clef line with a few notes.

(2te x accel. →)

Handwritten musical notation for the third system, showing a grand staff with treble and bass clefs. It includes a double bar line with a fermata-like symbol above it, and a final double bar line with a fermata-like symbol below it.



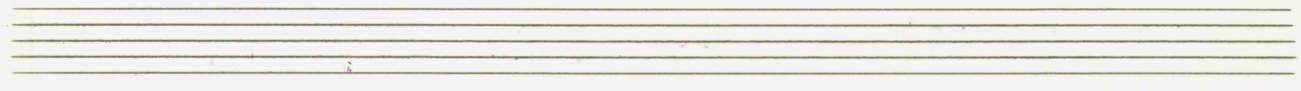
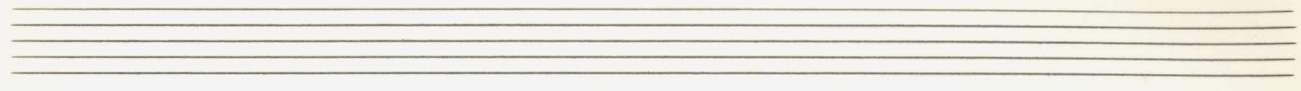




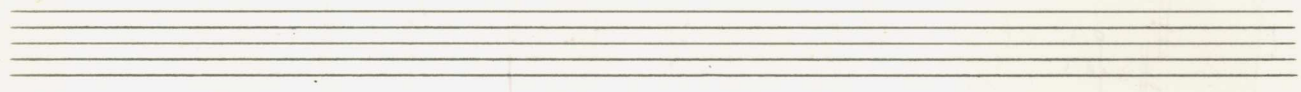
Handwritten musical notation for the first system. The system consists of two staves. The upper staff is in treble clef and contains a sequence of notes: a quarter note G4 with an accent (^), a quarter note A4 with an accent (^), a half note B4 with a flat (b) and a slur, and a quarter note C5 with a sharp (#) circled. The lower staff is in bass clef and contains a whole rest. The system concludes with a double bar line.

Handwritten musical notation for the second system. The system consists of two staves. The upper staff is in treble clef and contains a sequence of notes: a quarter note D5 with a sharp (#), a quarter note E5 with a sharp (#), a quarter note F5 with a flat (b), a quarter note G5 with a flat (b), and a quarter note A5 with a flat (b). The lower staff is in bass clef and contains a sequence of notes: a quarter note B4 with a flat (b), a quarter note C5 with a flat (b), a quarter note D5 with a flat (b), a quarter note E5 with a flat (b), and a quarter note F5 with a flat (b). The system concludes with a double bar line.

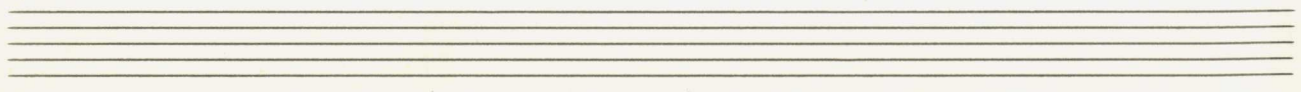
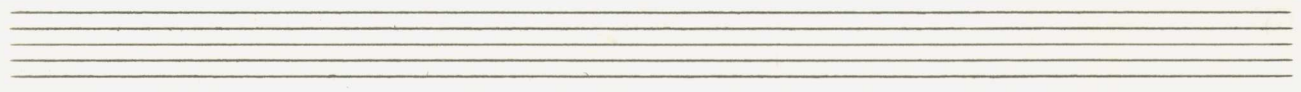
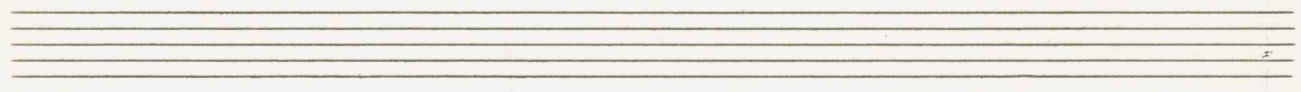
Handwritten musical notation for the third system. The system consists of two staves. Both the upper and lower staves contain whole rests for four measures. The system concludes with a double bar line.



Handwritten musical notation for the first system. The top staff contains a melody with slurs and ties. The bottom staff contains chords with accidentals: a B-flat major chord (Bb, D, F) in the first measure, a B-flat major chord (Bb, D, F) in the second measure, and a B-flat major chord (Bb, D, F) in the third measure.



Handwritten musical notation for the second system. The top staff contains a melody with slurs and ties. The bottom staff contains chords with accidentals: a D major chord (D, F#, A) in the first measure, a B-flat major chord (Bb, D, F) in the second measure, and a B-flat major chord (Bb, D, F) in the third measure.





Handwritten musical notation for the first system. The treble clef staff begins with a key signature of one flat (B-flat) and a 7/8 time signature. The melody consists of eighth and sixteenth notes, with slurs and accents. The bass staff contains rests.

Handwritten musical notation for the second system. The treble clef staff continues the melody with slurs and accents. The bass staff shows chords with stems and some accidentals.

Handwritten musical notation for the third system. The treble clef staff continues the melody with slurs and accents. The bass staff contains chords and rests.

Handwritten musical notation for the first system. The treble clef staff contains a sequence of notes: a quarter note G4, a quarter note A4, a quarter note B4, a quarter note C5, a quarter note B4, a quarter note A4, and a quarter note G4. The bass clef staff contains a whole note chord consisting of three ledger lines below the staff (F2, C2, G1). The system is divided into four measures by vertical bar lines. The second measure contains a quarter note G4, a quarter note A4, a quarter note B4, and a quarter note C5. The third and fourth measures contain a double bar line and a fermata symbol.

Handwritten musical notation for the second system. The treble clef staff contains a sequence of notes: a quarter note G4, a quarter note A4, a quarter note B4, a quarter note C5, a quarter note B4, a quarter note A4, and a quarter note G4. The bass clef staff contains a whole note chord consisting of two ledger lines below the staff (F2, C2). The system is divided into four measures by vertical bar lines. The second measure contains a quarter note G4, a quarter note A4, a quarter note B4, and a quarter note C5. The third and fourth measures contain a double bar line and a fermata symbol.

Handwritten musical notation for the third system. The treble clef staff contains a sequence of notes: a quarter note G4, a quarter note A4, a quarter note B4, a quarter note C5, a quarter note B4, a quarter note A4, and a quarter note G4. The bass clef staff contains a whole note chord consisting of two ledger lines below the staff (F2, C2). The system is divided into four measures by vertical bar lines. The second measure contains a quarter note G4, a quarter note A4, a quarter note B4, and a quarter note C5. The third and fourth measures contain a double bar line and a fermata symbol.



Handwritten musical notation for the first system. The treble staff begins with a treble clef and a sharp sign (#). It contains a series of notes with accidentals (flats and naturals) and a slur. The bass staff starts with a bass clef and contains notes with accidentals and a slur. There are dynamic markings like accents (^) and a fermata over the final note.

Handwritten musical notation for the second system. The treble staff continues the melodic line with notes and accidentals, including a sharp sign (#) and a fermata. The bass staff has rests in the first two measures and then notes with accidentals in the third measure, including a sharp sign (#) and an accent (^).

Handwritten musical notation for the third system. The treble staff starts with a treble clef and contains notes with accidentals (sharps and naturals) and a slur. The bass staff has notes with accidentals and a slur. There are dynamic markings like accents (^) and a fermata over the final note.

Handwritten musical score for the first system. The system consists of two staves. The upper staff is in treble clef and contains a circled sharp sign (#) in the first measure, followed by four measures of chords with accents (^) above them. The lower staff is in bass clef and contains a flat sign (b) in the first measure, followed by four measures of chords with accents (^) below them. The system is divided into four measures by vertical bar lines.

Handwritten musical score for the second system. The system consists of two staves. The upper staff is in treble clef and contains a melodic line with eighth notes and accents (^) above them. The lower staff is in bass clef and contains a bass line with a flat sign (b) and a note in the third measure. The system is divided into four measures by vertical bar lines.

Handwritten musical score for the third system. The system consists of two staves. The upper staff is in treble clef and contains four measures of chords with accents (^) above them. The lower staff is in bass clef and contains four measures of chords with accents (^) below them. The system is divided into four measures by vertical bar lines.



Handwritten musical notation for the first system. The treble clef staff contains a melodic line with eighth notes and slurs, marked with accents (^). The bass clef staff contains a simple accompaniment with a few notes and rests.

Handwritten musical notation for the second system. The treble clef staff contains a melodic line with eighth notes and slurs, marked with accents (^). The bass clef staff contains a simple accompaniment. The instruction *pp sempre cresc.* is written in the left margin.

Handwritten musical notation for the third system. The treble clef staff contains a melodic line with eighth notes and slurs, marked with accents (^). The bass clef staff contains a simple accompaniment with a few notes and rests.

Handwritten musical notation for the first system. The treble clef staff begins with a circled 'f' dynamic marking. The melody consists of several measures with notes, slurs, and accidentals (flats and sharps). The bass clef staff contains rests in the first two measures.

Handwritten musical notation for the second system. The treble clef staff has a key signature change to one sharp (F#). The bass clef staff has a key signature change to two flats (Bb). Both staves contain complex textures with many notes, slurs, and dynamic markings.

Handwritten musical notation for the third system. The treble clef staff begins with a circled 'f' dynamic marking. It features a complex texture with many notes and slurs. The bass clef staff has a circled 'f' dynamic marking and contains a simpler line with notes and rests.



Handwritten musical notation for the first system. The treble staff contains a melodic line with slurs and accents. The bass staff shows chords and rests. The system is divided into three measures.

Handwritten musical notation for the second system. The treble staff continues the melodic line. The bass staff shows chords and rests. The system is divided into three measures, ending with a wavy line on the right.

Handwritten musical notation for the third system. The treble staff begins with the word "din" and contains a melodic line. The bass staff shows chords and rests. The system is divided into five measures, with dynamic markings like "pp" and accents.

sempre cresc.



Handwritten musical notation for the first system. It consists of two staves. The upper staff is in treble clef and contains three measures of music with notes, rests, and accents. The lower staff is in bass clef and contains three measures with chords and dynamic markings, including a forte 'f' marking.

Handwritten musical notation for the second system. It consists of two staves. The upper staff begins with a circled sharp sign (#) and contains a bracketed section of notes. The lower staff contains notes and rests across three measures.

Handwritten musical notation for the third system. It consists of two staves. The upper staff begins with a circled sharp sign (#) and contains a bracketed section of notes. The lower staff contains notes and rests across three measures.

Handwritten musical notation for the first system. It consists of two staves. The top staff has a treble clef and a circled sharp sign (#). The bottom staff has a bass clef. Both staves contain complex rhythmic markings, including notes, rests, and various symbols like 'N' and 'C'. There are also some vertical lines and brackets indicating phrasing or structure.

Handwritten musical notation for the second system. It consists of two staves. The top staff has a treble clef and the bottom staff has a bass clef. The notation is primarily rhythmic, with vertical lines and some notes. There are also some symbols like 'N' and 'C' scattered throughout the staves.

groß. rit

Handwritten musical notation for the third system. It consists of two staves. The top staff has a treble clef and the bottom staff has a bass clef. The notation is very sparse, with mostly vertical lines. A tempo marking 'groß. rit' is written above the first staff. A time signature of 4/4 is written below the first staff. There is a large scribble at the end of the system.



lento (mehr ruhig)

Handwritten musical score for the first system. It consists of two staves. The top staff is in treble clef and contains a series of chords in the first measure, followed by a fermata. The bottom staff is in bass clef and contains a melodic line in the first measure, followed by a fermata. The time signature is 4/4. A circled 'pp' dynamic marking is present in the first measure of the top staff.

Handwritten musical score for the second system. It consists of two staves. The top staff is in treble clef and contains a series of chords in the first measure, followed by a fermata. The bottom staff is in bass clef and contains a melodic line in the first measure, followed by a fermata. The time signature is 4/4.

Handwritten musical notation for the first system. The treble clef part begins with a key signature of one sharp (F#) and contains several chords and melodic lines. The bass clef part features a simple bass line with notes and rests. A vertical bar line is present in the middle of the system.

Handwritten musical notation for the second system. The treble clef part starts with a dynamic marking of *mf* and contains chords. The bass clef part has notes and rests. A vertical bar line is present in the middle of the system.

Handwritten musical notation for the third system. The treble clef part begins with a circled sharp sign (#) and contains chords. The bass clef part has notes and rests. A vertical bar line is present in the middle of the system.



Handwritten musical score for the first system. The top staff is in treble clef and contains a melodic line with various notes and accidentals. The bottom staff is in bass clef and contains a bass line with a circled 'p' dynamic marking and a 'basso' label. The system is divided into two measures by a vertical bar line.

Handwritten musical score for the second system. The top staff is in treble clef and contains a melodic line with various notes and accidentals. The bottom staff is in bass clef and contains a bass line with a 'basso' label. The system is divided into two measures by a vertical bar line.

Handwritten musical score for the third system. The top staff is in treble clef and contains a melodic line with various notes and accidentals. The bottom staff is in bass clef and contains a bass line with a circled 'C' time signature and a 'basso' label. The system is divided into two measures by a vertical bar line.

Handwritten musical notation for the first system. The treble clef has a sharp sign (F#) circled. The bass clef has a flat sign (Bb) circled. The notation includes a melodic line in the treble and a bass line in the bass, with various slurs and ties.

Handwritten musical notation for the second system. The treble clef has a sharp sign (F#) circled. The bass clef has a flat sign (Bb) circled. The notation is dense with notes and slurs, indicating complex chordal structures.

Handwritten musical notation for the third system. The treble clef has a circled "din" and a circled "pp" dynamic marking. The notation is heavily scribbled over with large, sweeping lines.



Handwritten musical score for the first system. The notation includes a grand staff with treble and bass clefs. The music features a dynamic marking  $p$  in a circle, various notes with accidentals (sharps and flats), and a fermata over a final note. Above the staff, there are handwritten notes:  $m$ ,  $\#$ , and  $f$  with arrows pointing to specific notes.

Handwritten musical score for the second system. The notation includes a grand staff with treble and bass clefs. The music features a dynamic marking  $p$  in a circle, various notes with accidentals, and a large slur over the entire system. The word *cresce...* is written in the right-hand part of the staff.

mf

77

77

pp

f

pp

2x (poco rit) ...

D.c. bis hierher dann weiter

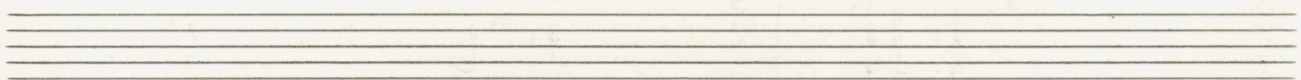
D.c. ohne ||:|:



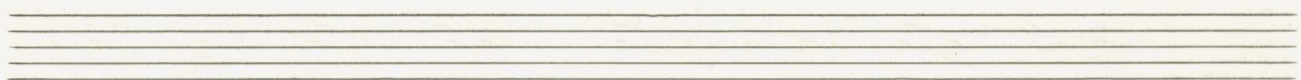


Tempo ① sehr ruhig

pp



>



Handwritten musical score for the first system. The system consists of two staves. The upper staff is in treble clef and contains several chords, some with accidentals (sharps). The lower staff is in bass clef and contains a melodic line with eighth notes and a final phrase with a slur. A vertical bar line is present in the middle of the system.

Handwritten musical score for the second system. The system consists of two staves. The upper staff is in treble clef and contains chords with dynamics markings 'mf' and 'f'. The lower staff is in bass clef and contains a melodic line with slurs and accents. A vertical bar line is present in the middle of the system.

Handwritten musical score for the third system. The system consists of two staves. The upper staff is in treble clef and contains complex chordal textures with many notes and slurs. The lower staff is in bass clef and contains a melodic line with slurs and accents. A vertical bar line is present in the middle of the system.



Flöte Solo

frei

*p*

*f* rit - dim

*f*

*f* *p*

Handwritten musical score for the first system. The top staff is a treble clef with a melodic line containing notes with sharps and flats, slurs, and dynamic markings such as *p* and *f*. Below it is a grand staff with a bass clef. The bass line contains notes and a vertical line of notes. A large bracket spans across the grand staff.

so ruhig als möglich

Handwritten musical score for the second system. The top staff is a treble clef with notes and a dynamic marking of *fff*. Below it is a grand staff with a bass clef. The bass line contains notes and a vertical line of notes. A large scribble is present on the right side of the grand staff.





Schlagzeug Solo (sehr rasch)

4/4 *pp* <

VAR.  
v. 1.





Handwritten musical score for the first system. It consists of two staves (treble and bass clefs) and two empty staves below. The notation includes various notes, accidentals (sharps, flats, double flats), and dynamic markings such as accents (>) and a circled 'p'.

Handwritten musical score for the second system. It features two staves with melodic lines. The treble staff has a circled 'p' marking. The bass staff has a circled 'p' marking. There are also dynamic markings like 'f' and 'p' throughout the system.

Handwritten musical score for the third system. It consists of two staves with notes and accidentals. A dynamic marking 'f' is present at the beginning. The system concludes with a double bar line and a fermata-like symbol.

wieder  
 bis  
 hierher-  
 dann  
 d.c.  
 al f



