

Notenheft



quasi

Handwritten musical notation for the first system. It features a treble clef and a circled 'F' with a sharp sign. The key signature changes to one flat (B-flat) in the second measure. The notation includes a series of slanted lines in the bass staff, suggesting a specific rhythmic pattern.

Handwritten musical notation for the second system. It features a treble clef and a key signature of one flat. The notation includes a series of slanted lines in the bass staff and a key signature change to one flat in the treble staff.

Handwritten musical notation for the third system. It features a treble clef and a key signature of one flat. The notation includes a series of slanted lines in the bass staff and a key signature change to one flat in the treble staff.

Handwritten musical notation for the fourth system. It features a treble clef and a key signature of one flat. The notation includes a series of slanted lines in the bass staff and a key signature change to one flat in the treble staff.

Handwritten musical notation for the first system. The treble clef staff contains a series of chords and a melodic line with a slur and an accent. The bass clef staff contains a series of notes and rests.

Handwritten musical notation for the second system. The treble clef staff contains a series of chords and a melodic line with a slur and an accent. The bass clef staff contains a series of notes and rests.

Handwritten musical notation for the third system. The treble clef staff contains a series of chords and a melodic line with a slur and an accent. The bass clef staff contains a series of notes and rests.

Handwritten musical notation for the fourth system. The treble clef staff contains a series of chords and a melodic line with a slur and an accent. The bass clef staff contains a series of notes and rests.

2

mp 2 + *f* =

Handwritten musical notation for the first system, featuring two staves with notes and rhythmic markings.

Handwritten musical notation for the second system, featuring two staves with notes and rhythmic markings.

Handwritten musical notation for the third system, featuring two staves with notes and rhythmic markings, ending with a double bar line and the text "D.C. al fine".

Handwritten musical notation for the fourth system, featuring two staves with notes and rhythmic markings, ending with a double bar line and the text "Cresc.".

Andante (Slowly)

mf

Handwritten musical notation for the first system. It features a treble clef and a 3/4 time signature. The key signature has one sharp (F#). The notation includes a melodic line with a slur and a bass line with chords and slurs.

Handwritten musical notation for the second system. It features a treble clef and a 3/4 time signature. The notation includes a melodic line with a slur and a bass line with chords and slurs.

Handwritten musical notation for the third system. It features a treble clef and a 3/4 time signature. The notation includes a melodic line with a slur and a bass line with chords and slurs.

Handwritten musical notation for the first system. The top staff is in treble clef with a key signature of one sharp (F#). The bottom staff is in bass clef. The music consists of two measures. The first measure has a treble staff with a half note G4, a quarter note A4, and a quarter note B4, with a slur over the last two notes. The bass staff has a half note G2, a quarter note A2, and a quarter note B2, with a slur over the last two notes. The second measure has a treble staff with a half note C5, a quarter note D5, and a quarter note E5, with a slur over the last two notes. The bass staff has a half note C3, a quarter note D3, and a quarter note E3, with a slur over the last two notes.

Handwritten musical notation for the second system. The top staff is in treble clef. The bottom staff is in bass clef. The music consists of two measures. The first measure has a treble staff with a half note G4, a quarter note A4, and a quarter note B4, with a slur over the last two notes. The bass staff has a half note G2, a quarter note A2, and a quarter note B2, with a slur over the last two notes. The second measure has a treble staff with a half note C5, a quarter note D5, and a quarter note E5, with a slur over the last two notes. The bass staff has a half note C3, a quarter note D3, and a quarter note E3, with a slur over the last two notes.

Handwritten musical notation for the third system. The top staff is in treble clef. The bottom staff is in bass clef. The music consists of two measures. The first measure has a treble staff with a half note G4, a quarter note A4, and a quarter note B4, with a slur over the last two notes. The bass staff has a half note G2, a quarter note A2, and a quarter note B2, with a slur over the last two notes. The second measure has a treble staff with a half note C5, a quarter note D5, and a quarter note E5, with a slur over the last two notes. The bass staff has a half note C3, a quarter note D3, and a quarter note E3, with a slur over the last two notes.

> di dol *f*

Masch

Handwritten musical notation for the first system. It consists of two staves. The top staff has a treble clef and a circled sharp sign (#). The bottom staff has a bass clef. The key signature is two flats (B-flat and E-flat). The time signature is 4/4. The notation includes several notes, rests, and a circled sharp sign. There are also some handwritten annotations like '4 b b' and '4 b b'.

Handwritten musical notation for the second system. It consists of two staves. The top staff has a treble clef and a key signature of two flats (B-flat and E-flat). The bottom staff has a bass clef. The notation includes several notes, rests, and a circled sharp sign. There are also some handwritten annotations like '4 b b' and '4 b b'.

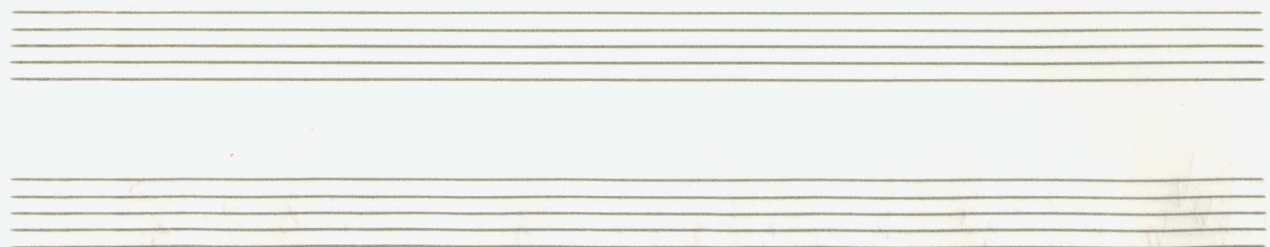
Handwritten musical notation for the third system. It consists of two staves. The top staff has a treble clef and a key signature of two flats (B-flat and E-flat). The bottom staff has a bass clef. The notation includes several notes, rests, and a circled sharp sign. There are also some handwritten annotations like '4 b b' and '4 b b'.

Handwritten musical notation for the first system, featuring a treble and bass clef with a key signature of three flats and a common time signature. The notation includes chords and melodic lines with slurs and ties.

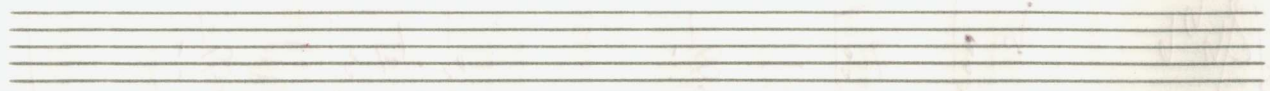
Handwritten musical notation for the second system, continuing the piece with similar notation and dynamics.

Handwritten musical notation for the third system, including a circled 'p' dynamic marking.

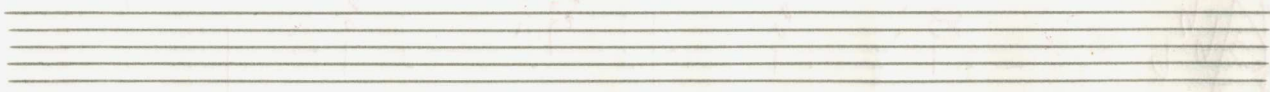
Handwritten musical notation for the fourth system, including a circled '9' dynamic marking and a 'f' dynamic marking.



Handwritten musical notation for the first system. It consists of two staves. The upper staff has a treble clef, a key signature of two flats (B-flat and E-flat), and a circled plus sign (+) next to it. The music features several chords with wavy lines above them, indicating tremolos or rapid oscillations. The lower staff has a bass clef and contains a sequence of eighth notes.



Handwritten musical notation for the second system. It consists of two staves. The upper staff has a treble clef, a key signature of two flats, and a circled plus sign (+) next to it. The music includes a series of eighth notes with a slur, followed by a circled plus sign (+) and a double bar line. The lower staff has a bass clef and contains a sequence of eighth notes.



Handwritten musical notation for the third system. It consists of two staves. The upper staff has a treble clef, a key signature of two flats, and a circled plus sign (+) next to it. The music includes a series of eighth notes with a slur, followed by a circled plus sign (+) and a double bar line. The lower staff has a bass clef and contains a sequence of eighth notes.



10/10

Handwritten musical notation for the first system. The treble clef part contains a series of notes with stems, some marked with accents and slurs. The bass clef part contains rests and a few notes. There are some handwritten annotations above the treble staff, including a wavy line and a circled '4'.

Handwritten musical notation for the second system. The treble clef part shows several chords, some with stems. The bass clef part contains rests and a few notes. There are some handwritten annotations, including a circled '4' and a circled 'F'.

Handwritten musical notation for the third system. The treble clef part has a 'Coda' marking and some notes. The bass clef part contains rests and notes. There is a double bar line at the end of the system.

Handwritten musical notation for the fourth system. The treble clef part has a 'Coda' marking and some notes. The bass clef part contains rests and notes. There is a double bar line at the end of the system.

Pal & his
 lieber
 Dal & al
 von & - &
 mehrmals
 wiederholen
 dann

♩ coda

Handwritten musical notation on a grand staff. The notation includes various symbols such as slurs, accents, and dynamic markings like 'p' and 'pp'. There are also some vertical lines and a circled 'F' symbol. The notation is written in red ink.

4

lento

13

Handwritten musical notation for the first system. The treble clef part begins with a quarter note G4, followed by a quarter note A4, and a quarter note B4. The bass clef part has a quarter note G3, followed by a quarter note F3. The system concludes with a double bar line and a large handwritten 'X' over the staff.

Handwritten musical notation for the second system. The treble clef part starts with a quarter note G4, followed by a quarter note A4, and a quarter note B4. The bass clef part has a quarter note G3, followed by a quarter note F3. The system ends with a double bar line and a circled cross symbol.

Handwritten musical notation for the third system. The treble clef part begins with a quarter note G4, followed by a quarter note A4, and a quarter note B4. The bass clef part has a quarter note G3, followed by a quarter note F3. A circled 'p' is written in the left margin. The system ends with a double bar line.

Handwritten musical notation for the fourth system. The treble clef part starts with a quarter note G4, followed by a quarter note A4, and a quarter note B4. The bass clef part has a quarter note G3, followed by a quarter note F3. The system ends with a double bar line.

14

Handwritten musical notation for the first system. The treble staff contains a melodic line with a slur over the first two measures and a long note in the third measure. The bass staff has a whole rest in the first measure, followed by a sharp sign (#) in a circle, and then some scribbles. A dynamic marking 'f' is present in the first measure.

Handwritten musical notation for the second system. The treble staff has a circled sharp sign (#) in the first measure, followed by a melodic line with slurs. The bass staff has a whole rest in the first measure, followed by notes in the second and third measures.

Handwritten musical notation for the third system. The treble staff has notes with slurs and a circled sharp sign (#) in the second measure. The bass staff has notes with slurs and a circled sharp sign (#) in the second measure.

Handwritten musical notation for the fourth system. The treble staff has notes with slurs and a circled sharp sign (#) in the second measure. The bass staff has notes with slurs and a circled sharp sign (#) in the second measure.

Handwritten musical notation on two staves. The key signature is G major (one sharp). The notation includes a circled 'p' (piano) dynamic marking. The music features a melodic line in the upper staff and a supporting line in the lower staff, both with phrasing slurs.

Handwritten musical notation on two staves. The key signature is G major. The notation includes a circled 'p' dynamic marking. The music features a melodic line in the upper staff and a supporting line in the lower staff, both with phrasing slurs.

P.S.
al
♯

Handwritten musical notation on two staves. The key signature is G major. The notation includes a circled 'p' dynamic marking. The music features a melodic line in the upper staff and a supporting line in the lower staff, both with phrasing slurs.

Handwritten musical notation on two staves. The key signature is G major. The notation includes a circled 'p' dynamic marking. The music features a melodic line in the upper staff and a supporting line in the lower staff, both with phrasing slurs. A large slur spans across both staves, and the word 'Pedal' is written below the lower staff.

5

zufast

Handwritten musical notation for the first system, measures 5-8. The system consists of two staves. The upper staff is in treble clef with a key signature of one sharp (F#) and a 6/8 time signature. The lower staff is in bass clef. The notation includes chords, eighth notes, and a circled 'p' dynamic marking. A fermata is placed over the final measure of the system.

Handwritten musical notation for the second system, measures 9-12. The system consists of two staves. The upper staff is in treble clef with a key signature of one sharp (F#). The lower staff is in bass clef. The notation includes chords, eighth notes, and a circled 'p' dynamic marking. A fermata is placed over the final measure of the system.

Handwritten musical notation for the third system, measures 13-16. The system consists of two staves. The upper staff is in treble clef with a key signature of one sharp (F#). The lower staff is in bass clef. The notation includes chords, eighth notes, and a circled 'p' dynamic marking. A fermata is placed over the final measure of the system.

17

Handwritten musical notation on a grand staff (treble and bass clefs). The key signature is one sharp (F#) and the time signature is 4/4. The music consists of two measures. The first measure has a circled *f* dynamic marking. The second measure has a circled *rit* marking above the staff. The notation includes various notes, rests, and accidentals.

Handwritten musical notation on a grand staff. The key signature is one sharp (F#) and the time signature is 4/4. The music consists of two measures. The first measure has a circled *p* dynamic marking. The second measure has a circled *rit* marking above the staff. The notation includes various notes, rests, and accidentals.

Handwritten musical notation on a grand staff. The key signature is one sharp (F#) and the time signature is 4/4. The music consists of two measures. The first measure has a circled *f* dynamic marking. The second measure has a circled *rit* marking above the staff. The notation includes various notes, rests, and accidentals.

Handwritten musical notation on a grand staff. The key signature is one sharp (F#) and the time signature is 4/4. The music consists of two measures. The first measure has a circled *f* dynamic marking. The second measure has a circled *rit* marking above the staff. The notation includes various notes, rests, and accidentals.

1 + Dals
 2 + Dals
 al ϕ

19

Handwritten musical notation on a page with ten staves. The notation is written in red ink. At the top, there is a treble clef and the instruction "(sempre din + rit)". Below this, the first two staves contain musical notation. The first staff has a treble clef and a key signature of one flat (B-flat). The second staff has a bass clef and a time signature of 3/4. The notation includes several chords and a melodic line. A large, sweeping red line starts from the right side of the second staff and curves downwards across the remaining staves. The rest of the page is blank.

slow

Handwritten musical notation for the first system, featuring a treble and bass clef with a 4/4 time signature and a key signature of one sharp (F#). The notation includes a whole note chord in the treble and a half note chord in the bass, with a fermata over the treble note. A double bar line is present.

Handwritten musical notation for the second system, showing a treble and bass clef. The treble part has a melodic line with slurs and accents, while the bass part has a simple accompaniment. A double bar line is present.

Handwritten musical notation for the third system, continuing the piece with a treble and bass clef. The treble part features a melodic line with slurs and accents, and the bass part provides accompaniment. A double bar line is present.

Handwritten musical notation for the first system. The treble clef staff contains a melodic line with notes G4, A4, B4, C5, B4, A4, G4, and a fermata over the final G4. The bass clef staff contains a chordal accompaniment with notes G3, B3, D4, and E4, with slanted lines indicating a tremolo or rapid repetition. A fermata is placed over the final chord. A circled 'f' dynamic marking is present at the beginning of the system.

Handwritten musical notation for the second system. The treble clef staff begins with a fermata over a whole note G4. The bass clef staff contains a chordal accompaniment with notes G3, B3, D4, and E4. A circled 'f' dynamic marking is present. The system concludes with a fermata over a whole note G4 in the treble staff.

Handwritten musical notation for the third system. The treble clef staff contains a melodic line with notes G4, A4, B4, C5, B4, A4, G4, and a fermata over the final G4. The bass clef staff contains a chordal accompaniment with notes G3, B3, D4, and E4, with slanted lines indicating a tremolo or rapid repetition. A fermata is placed over the final chord.

Handwritten musical notation for the fourth system. The treble clef staff contains a melodic line with notes G4, A4, B4, C5, B4, A4, G4, and a fermata over the final G4. The bass clef staff contains a chordal accompaniment with notes G3, B3, D4, and E4, with slanted lines indicating a tremolo or rapid repetition. A circled 'f' dynamic marking is present at the beginning. The system concludes with a double bar line.

Handwritten musical notation for the first system, featuring a treble and bass clef with complex chordal structures and slurs.

Handwritten musical notation for the second system, including a treble clef, a circled 'p' dynamic marking, and a 'P.F.' marking at the end.

Handwritten musical notation for the third system, showing a treble clef, a circled 'p' dynamic marking, and various slurs and accents.

rit. dim.

Handwritten musical notation for the fourth system, including a treble clef, a circled 'rit. dim.' marking, a 'pp' dynamic marking, and a final flourish.

(4 IIII)

Handwritten musical notation for the first system. The treble clef staff contains a triplet of eighth notes in the first measure, followed by slanted lines indicating rests. The bass clef staff contains a wavy line in the first measure, followed by quarter notes and eighth notes with accents in the subsequent measures. A long purple slur spans across both staves.

Handwritten musical notation for the second system. The treble clef staff contains a triplet of eighth notes in the first measure, followed by slanted lines. The bass clef staff contains quarter notes and eighth notes with accents. A long purple slur spans across both staves.

Handwritten musical notation for the third system. The treble clef staff contains notes with accents and slanted lines. The bass clef staff contains slanted lines. A long purple slur spans across both staves.

Handwritten musical notation for the fourth system. The treble clef staff contains notes with slanted lines. The bass clef staff contains slanted lines. A long purple slur spans across both staves.

Handwritten musical notation on a grand staff. The right-hand part (treble clef) contains the lyrics "guf - duis" and "dus". The first measure has a sharp sign (#) above the staff and a slur over the notes. The second measure has a slur over the notes. The third measure has a slur over the notes and a circled 'p' (piano) dynamic marking. The left-hand part (bass clef) contains rhythmic notation with slanted lines indicating notes.

Handwritten musical notation on a grand staff. The right-hand part (treble clef) is marked "Lento" and "pp" (pianissimo). It features a long slur over a series of notes. The left-hand part (bass clef) contains rhythmic notation with slanted lines.

Handwritten musical notation on a grand staff. The right-hand part (treble clef) is marked "(Zurück) Tempo 1". It features a circled 'p' (piano) dynamic marking and a slur over a series of notes. The left-hand part (bass clef) contains rhythmic notation with slanted lines.

Handwritten musical notation on a grand staff. The right-hand part (treble clef) contains notes with slurs and a circled 'p' (piano) dynamic marking. The left-hand part (bass clef) contains rhythmic notation with slanted lines.

Handwritten musical notation on a grand staff. The top staff begins with a treble clef, a common time signature, and the word "CODA" written in red ink. The notation consists of two staves. The upper staff contains several measures of music with notes and stems, including a circled sharp sign (#) in the first measure. The lower staff contains diagonal lines representing a bass line. The piece concludes with a double bar line and repeat dots.

Handwritten musical notation on a grand staff. The notation is heavily scribbled and includes a large, looping red line across the middle of the staff. To the left of the staff, there are several circled sharp signs (#) and some illegible handwritten text, possibly including "CODA". The notation is mostly obscured by the red scribbles.

slow

Handwritten musical notation for the first system. It consists of two staves. The top staff is in treble clef with a key signature of one flat (B-flat). It begins with a circled 'p' dynamic marking. The melody starts with a quarter note, followed by a series of eighth notes, and ends with a half note. A long slur covers the entire melodic line. The bottom staff is in bass clef with a key signature of one flat. It contains a series of chords, each marked with a tilde (~) and a vertical line, indicating a specific fingering or articulation.

Handwritten musical notation for the second system. It consists of two staves. The top staff is in treble clef with a key signature of one flat. It features a melodic line with a slur and a fermata over the final note. The bottom staff is in bass clef with a key signature of one flat. It contains several chords, some with vertical lines and tildes, and some with horizontal lines, suggesting specific fingering or articulation.

Handwritten musical notation for the third system. It consists of two staves. The top staff is in treble clef with a key signature of one flat. It begins with a circled 'p' dynamic marking. The melody starts with a quarter note, followed by a series of eighth notes, and ends with a half note. A long slur covers the entire melodic line. The bottom staff is in bass clef with a key signature of one flat. It contains a series of chords, each marked with a tilde (~) and a vertical line, indicating a specific fingering or articulation.

Handwritten musical notation for the first system. It consists of two staves. The upper staff is in treble clef and contains several notes, some with slurs and dynamic markings. The lower staff is in bass clef and contains a series of notes, some with slurs and dynamic markings. A large bracket spans across both staves, indicating a phrase or section.

Handwritten musical notation for the second system. It consists of two staves. The upper staff is in treble clef and contains several notes, some with slurs and dynamic markings. The lower staff is in bass clef and contains a series of notes, some with slurs and dynamic markings. A large bracket spans across both staves, indicating a phrase or section.

Handwritten musical notation for the third system. It consists of two staves. The upper staff is in treble clef and contains several notes, some with slurs and dynamic markings. The lower staff is in bass clef and contains a series of notes, some with slurs and dynamic markings. A large bracket spans across both staves, indicating a phrase or section.

Handwritten musical notation for the fourth system. It consists of two staves. The upper staff is in treble clef and contains several notes, some with slurs and dynamic markings. The lower staff is in bass clef and contains a series of notes, some with slurs and dynamic markings. A large bracket spans across both staves, indicating a phrase or section.

Handwritten musical notation for the first system, featuring a treble and bass clef with a key signature of one flat and a circled sharp sign. The notation includes chords and melodic lines with accents.

Handwritten musical notation for the second system, featuring a treble and bass clef with a key signature of one flat and a circled sharp sign. The notation includes chords and melodic lines.

Handwritten musical notation for the third system, featuring a treble and bass clef with a key signature of one flat. The notation includes chords and melodic lines.

Handwritten musical notation for the fourth system, including the instruction *dim (poco rit)* and *D.C.* The notation includes chords and melodic lines with a circled *p* dynamic marking. To the right, there is a handwritten note: *bis* hierher *da capo*

Handwritten musical notation on a five-line staff. The notation includes a treble clef, a key signature of one flat (B-flat), and a time signature of 3/4. The notes are written in a series of stems with heads, some with flags. A dynamic marking 'pp >' is present. A fermata is drawn over a note. A large, hand-drawn oval shape is drawn across the staff. There are also some scribbles and a vertical line.