

Notenheft

slow *A*

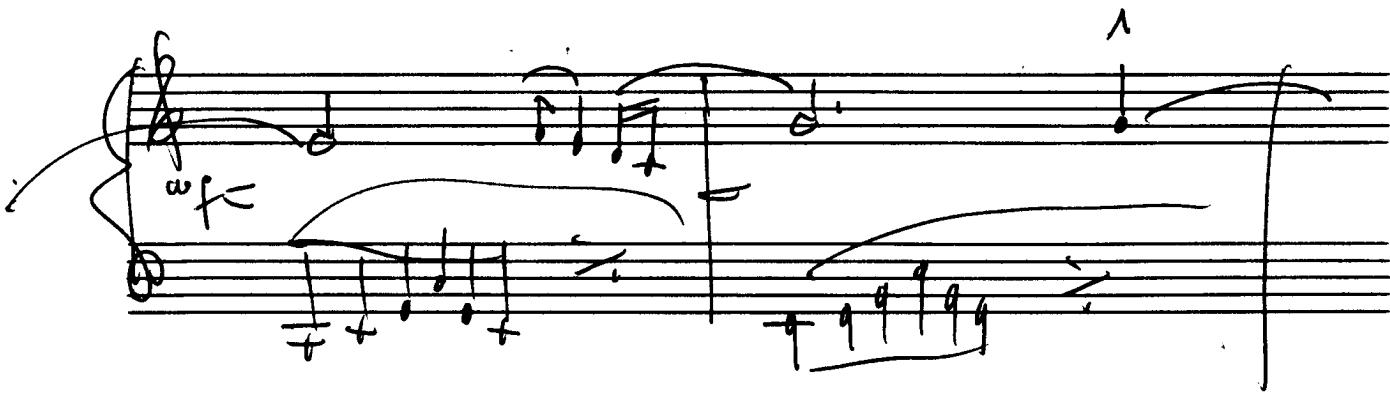
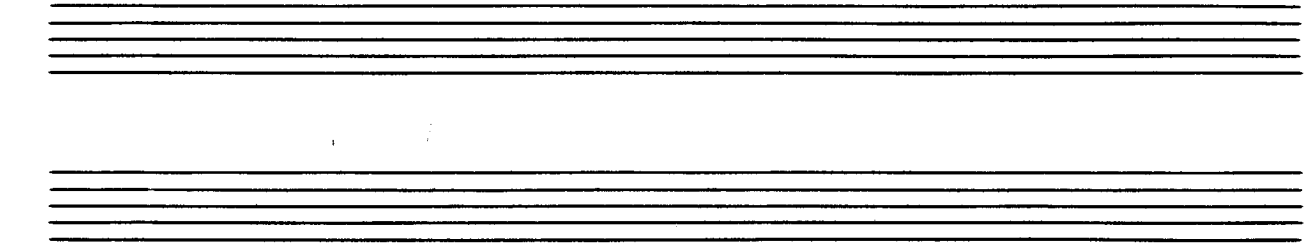
F 153 Scherbaum 1882

Handwritten musical notation for the first system. The treble clef contains a circled 'f' and the bass clef contains a circled '#'. The music consists of three measures with various notes and chords.

Handwritten musical notation for the second system. The treble clef contains a circled 'p' and the bass clef contains a circled '#'. The music consists of three measures with various notes and chords.

Handwritten musical notation for the third system. The treble clef contains a circled 'f' and the bass clef contains a circled '#'. The music consists of three measures with various notes and chords.

Handwritten musical notation for the fourth system. The treble clef contains a circled 'p' and the bass clef contains a circled '#'. The music consists of three measures with various notes and chords.



Handwritten musical notation for the first system. The treble staff contains a melodic line with notes and rests, including a circled 'ff' dynamic marking. The bass staff features a chordal accompaniment with notes and rests, including a circled 'ff' dynamic marking.

Handwritten musical notation for the second system. The treble staff has notes with accents and slurs. The bass staff has notes and rests, with a circled 'ff' dynamic marking.

Handwritten musical notation for the third system. The treble staff has notes with slurs and accents. The bass staff has notes and rests, with a circled 'ff' dynamic marking and a 'pp' marking.

Handwritten musical notation for the fourth system. The treble staff has notes with slurs and accents. The bass staff has notes and rests, with a circled 'ff' dynamic marking.

Handwritten musical score for piano, consisting of five systems of staves. The notation includes treble and bass clefs, a key signature of one sharp (F#), and various musical symbols such as notes, rests, slurs, and dynamic markings like 'p' and 'ppp'. The word 'din' is written in the second system. The score is written in a cursive, handwritten style.

ppp
5 poco rit.

Handwritten musical notation on a page of ten staves. The notation is concentrated on the first two staves, with the rest of the page being blank. The notation includes a treble clef, a key signature of one sharp (F#), a common time signature (C), and a dynamic marking of 'pmp'. There are some scribbles and a wavy line on the right side of the first two staves.

2

slow

Handwritten musical notation for the first system, measures 1-2. The music is written on a grand staff with treble and bass clefs. The key signature has one sharp (F#). The first measure contains a half note chord in the treble and a quarter note in the bass. The second measure contains a half note chord in the treble and a quarter note in the bass. The system ends with a double bar line.

Handwritten musical notation for the second system, measures 3-4. The music is written on a grand staff with treble and bass clefs. The key signature has one sharp (F#). The first measure contains a half note chord in the treble and a quarter note in the bass. The second measure contains a half note chord in the treble and a quarter note in the bass. The system ends with a double bar line.

Handwritten musical notation for the third system, measures 5-6. The music is written on a grand staff with treble and bass clefs. The key signature has one sharp (F#). The first measure contains a half note chord in the treble and a quarter note in the bass. The second measure contains a half note chord in the treble and a quarter note in the bass. The system ends with a double bar line.

7

8

Handwritten musical notation for the first system, measures 1-2. The right hand (treble clef) contains a quarter note G4, a quarter note A4, a quarter note B4, and a quarter note C5, all beamed together. The left hand (bass clef) contains a half note chord of G3 and B3, followed by a half note chord of G3 and B3, and a half note chord of G3 and B3. A fermata is placed over the final chord in the left hand.

Handwritten musical notation for the second system, measures 3-4. The right hand (treble clef) contains a quarter note G4, a quarter note A4, a quarter note B4, and a quarter note C5, all beamed together. The left hand (bass clef) contains a half note chord of G3 and B3, followed by a half note chord of G3 and B3, and a half note chord of G3 and B3. A fermata is placed over the final chord in the left hand.

Handwritten musical notation for the third system, measures 5-6. The right hand (treble clef) contains a quarter note G4, a quarter note A4, a quarter note B4, and a quarter note C5, all beamed together. The left hand (bass clef) contains a half note chord of G3 and B3, followed by a half note chord of G3 and B3, and a half note chord of G3 and B3. A fermata is placed over the final chord in the left hand.

Handwritten musical notation for the fourth system, measures 7-8. The right hand (treble clef) contains a quarter note G4, a quarter note A4, a quarter note B4, and a quarter note C5, all beamed together. The left hand (bass clef) contains a half note chord of G3 and B3, followed by a half note chord of G3 and B3, and a half note chord of G3 and B3. A fermata is placed over the final chord in the left hand.

3

Andante

Handwritten musical notation for the first system. It consists of two staves. The treble clef staff has a 3/4 time signature and a key signature of one sharp (F#). The music begins with a piano (*pp*) dynamic. The first measure contains a quarter note F#4, a quarter note G4, and a quarter note A4. The second measure contains a quarter rest, a quarter note B4, and a quarter note C5. The third measure contains a quarter note D5, a quarter note E5, and a quarter note F#5. The fourth measure contains a quarter note G5, a quarter note A5, and a quarter note B5. The fifth measure contains a quarter note C6, a quarter note D6, and a quarter note E6. The sixth measure contains a quarter note F#6, a quarter note G6, and a quarter note A6. The seventh measure contains a quarter note B6, a quarter note C7, and a quarter note D7. The eighth measure contains a quarter note E7, a quarter note F#7, and a quarter note G7. The system ends with a double bar line.

Handwritten musical notation for the second system. It consists of two staves. The treble clef staff has a 3/4 time signature and a key signature of one sharp (F#). The music begins with a piano (*p*) dynamic. The first measure contains a quarter note F#4, a quarter note G4, and a quarter note A4. The second measure contains a quarter note B4, a quarter note C5, and a quarter note D5. The third measure contains a quarter note E5, a quarter note F#5, and a quarter note G5. The fourth measure contains a quarter note A5, a quarter note B5, and a quarter note C6. The fifth measure contains a quarter note D6, a quarter note E6, and a quarter note F#6. The sixth measure contains a quarter note G6, a quarter note A6, and a quarter note B6. The seventh measure contains a quarter note C7, a quarter note D7, and a quarter note E7. The eighth measure contains a quarter note F#7, a quarter note G7, and a quarter note A7. The system ends with a double bar line.

Handwritten musical notation for the third system. It consists of two staves. The treble clef staff has a 3/4 time signature and a key signature of one sharp (F#). The music begins with a piano (*p*) dynamic. The first measure contains a quarter note F#4, a quarter note G4, and a quarter note A4. The second measure contains a quarter note B4, a quarter note C5, and a quarter note D5. The third measure contains a quarter note E5, a quarter note F#5, and a quarter note G5. The fourth measure contains a quarter note A5, a quarter note B5, and a quarter note C6. The fifth measure contains a quarter note D6, a quarter note E6, and a quarter note F#6. The sixth measure contains a quarter note G6, a quarter note A6, and a quarter note B6. The seventh measure contains a quarter note C7, a quarter note D7, and a quarter note E7. The eighth measure contains a quarter note F#7, a quarter note G7, and a quarter note A7. The system ends with a double bar line.

Handwritten musical notation for the first system, featuring a treble and bass clef with various notes and rests.

Handwritten musical notation for the second system, including a circled sharp sign and the word "breit".

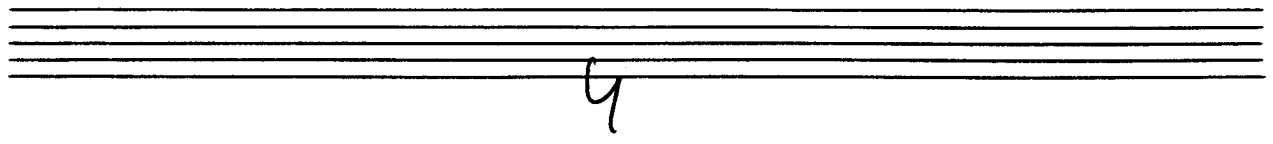
Handwritten musical notation for the third system, showing complex chord structures and dynamics.

Handwritten musical notation for the fourth system, including the word "Ruhig" and circled dynamic markings.

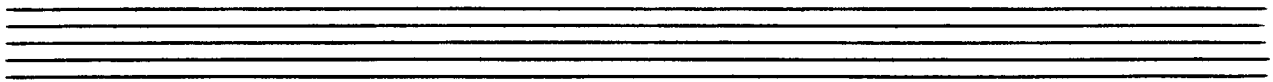
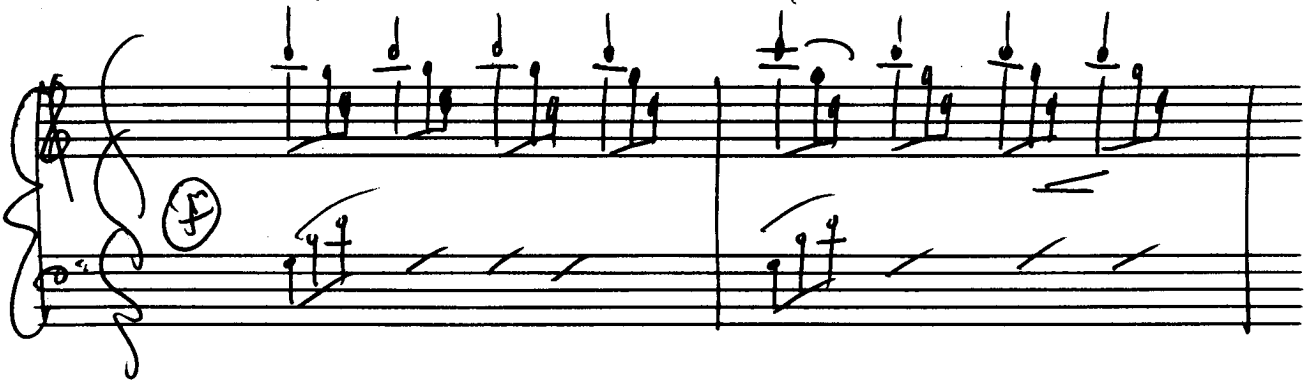
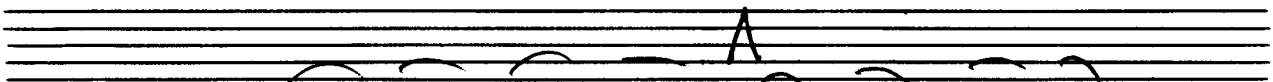
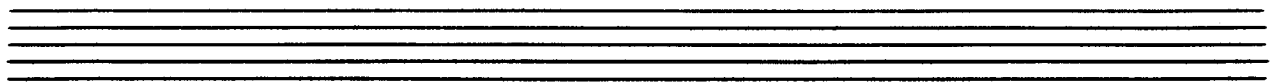
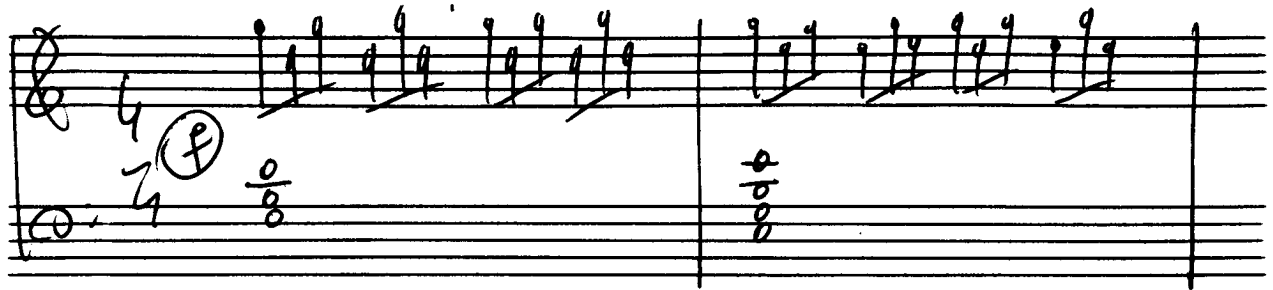
poco rit...

(2. x gr. xof + dia)





Rosale



Handwritten musical notation for the first system, measures 1-2. The system consists of two staves. The right-hand staff (treble clef) contains a sequence of chords: a triad of G4, B4, D5 in the first measure, followed by a series of chords in the second measure: G4-B4-D5, G4-A4-B4, G4-A4-B4, G4-A4-B4, and G4-A4-B4. The left-hand staff (bass clef) contains a sequence of chords: a triad of G3, B3, D4 in the first measure, followed by a series of chords in the second measure: G3-B3-D4, G3-A3-B3, G3-A3-B3, G3-A3-B3, and G3-A3-B3. A fermata is placed above the first measure of the right-hand staff.

Handwritten musical notation for the second system, measures 3-4. The system consists of two staves. The right-hand staff (treble clef) contains a sequence of chords: a triad of G4, B4, D5 in the first measure, followed by a series of chords in the second measure: G4-B4-D5, G4-A4-B4, G4-A4-B4, and G4-A4-B4. The left-hand staff (bass clef) contains a sequence of chords: a triad of G3, B3, D4 in the first measure, followed by a series of chords in the second measure: G3-B3-D4, G3-A3-B3, G3-A3-B3, and G3-A3-B3.

Handwritten musical notation for the third system, measures 5-6. The system consists of two staves. The right-hand staff (treble clef) contains a sequence of chords: a triad of G4, B4, D5 in the first measure, followed by a series of chords in the second measure: G4-B4-D5, G4-A4-B4, G4-A4-B4, and G4-A4-B4. The left-hand staff (bass clef) contains a sequence of chords: a triad of G3, B3, D4 in the first measure, followed by a series of chords in the second measure: G3-B3-D4, G3-A3-B3, G3-A3-B3, and G3-A3-B3.

Handwritten musical notation for the fourth system, measures 7-8. The system consists of two staves. The right-hand staff (treble clef) contains a sequence of chords: a triad of G4, B4, D5 in the first measure, followed by a series of chords in the second measure: G4-B4-D5, G4-A4-B4, G4-A4-B4, and G4-A4-B4. The left-hand staff (bass clef) contains a sequence of chords: a triad of G3, B3, D4 in the first measure, followed by a series of chords in the second measure: G3-B3-D4, G3-A3-B3, G3-A3-B3, and G3-A3-B3.

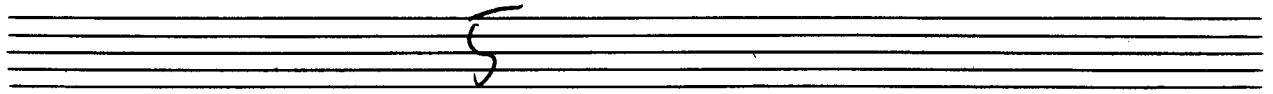
lento (flow)

pp

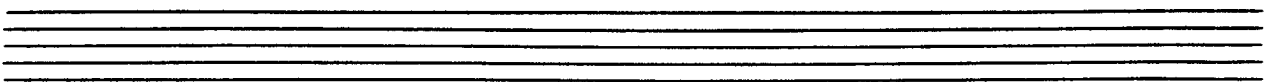
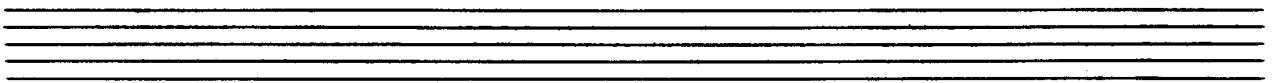
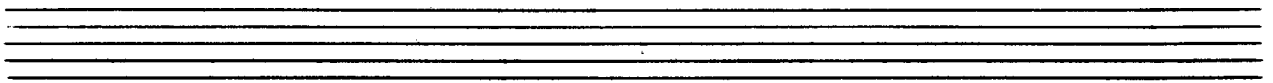
(2x gut - - - -)

D.C.

immer schwächer werden



slow



Handwritten musical notation for the first system. The treble staff contains a melodic line with notes and slurs, starting with a sharp sign. The bass staff contains a bass line with notes and rests. A circled 'p' with an equals sign is written in the left margin.

Handwritten musical notation for the second system. The treble staff features a melodic line with slurs and accents. The bass staff contains a bass line with notes and rests. A circled 'p' is written in the left margin.

Handwritten musical notation for the third system. The treble staff has a melodic line with a large slur and accents. The bass staff contains a bass line with notes and rests. A circled 'p' is written in the left margin.

Handwritten musical notation for the fourth system. The treble staff has a melodic line with a large slur and accents. The bass staff contains a bass line with notes and rests. A circled 'p' is written in the left margin.

Handwritten musical notation for the first system. It consists of two staves. The upper staff has a treble clef and contains several notes with accents and a circled sharp sign. The lower staff has a bass clef and contains notes with a circled sharp sign and a circled 'ff' dynamic marking. There are also some handwritten annotations above the notes, including a circled 'du'.

Handwritten musical notation for the second system. It consists of two staves. The upper staff has a treble clef and contains notes with a circled 'p' dynamic marking and various articulations. The lower staff has a bass clef and contains notes with a circled 'p' dynamic marking and various articulations.

Handwritten musical notation for the third system. It consists of two staves. The upper staff has a treble clef and contains notes with a circled 'pp' dynamic marking and various articulations. The lower staff has a bass clef and contains notes with a circled 'pp' dynamic marking and various articulations.

Handwritten musical notation for the fourth system. It consists of two staves. The upper staff has a treble clef and contains notes with a circled 'poco rit' dynamic marking. The lower staff has a bass clef and contains notes with a circled 'poco rit' dynamic marking. There is also a circled 'D.C.' and the text '(dann weiter)' written below the staff.

l'organe de

Handwritten musical notation on a grand staff. The right hand has a melodic line with a sharp sign and a fermata. The left hand has a bass line with a fermata and a 'ppp' dynamic marking. A large scribble is on the right side of the staff.

l'organe de

Handwritten musical notation on a grand staff. The right hand has a melodic line with a sharp sign and a 'pp' dynamic marking. The left hand has a bass line with a fermata and a 'ppp' dynamic marking. A large scribble is on the right side of the staff.

slow

ruhig \flat

1+
D. C.
2+
D. C. und
weiter

(ausblenden)

C: 200
C: 10

7

Mod. (

Handwritten musical notation for the first system. The treble clef staff contains several chords and notes, with accents (^) above some notes. The bass clef staff contains a sequence of notes and rests. A fermata is placed over a note in the second measure of the treble staff.

Handwritten musical notation for the second system. The treble clef staff features complex chordal textures with many notes beamed together. The bass clef staff has a more melodic line. A fermata is present over a note in the second measure of the treble staff.

Handwritten musical notation for the third system. The treble clef staff has a complex chordal texture. The bass clef staff has a melodic line. The instruction "D.C." is written in the upper right corner. Below the treble staff, the text "2x dir" is written. A fermata is placed over a note in the second measure of the treble staff.

Handwritten musical notation for the fourth system. The treble clef staff has a complex chordal texture. The bass clef staff has a melodic line. The instruction "(ausbleiben) sempre dir" is written in the upper left corner. Below the treble staff, the text "pp >" is written. A fermata is placed over a note in the second measure of the treble staff. A large wavy line is drawn on the right side of the system.

8

Slow

Handwritten musical notation for the first system, measures 1-3. The notation is on a grand staff with treble and bass clefs. Measure 1 features a piano (*pp*) dynamic marking and a dotted half note in the treble clef. Measure 2 contains a half note in the treble clef and a half note in the bass clef. Measure 3 shows a quarter note in the treble clef and a quarter note in the bass clef. The piece concludes with a double bar line.

Handwritten musical notation for the second system, measures 4-6. Measure 4 begins with a quarter note in the treble clef and a quarter note in the bass clef. Measure 5 continues with a quarter note in the treble clef and a quarter note in the bass clef. Measure 6 features a half note in the treble clef and a half note in the bass clef. The system ends with a double bar line.

Handwritten musical notation for the third system, measures 7-9. Measure 7 starts with a quarter note in the treble clef and a quarter note in the bass clef. Measure 8 continues with a quarter note in the treble clef and a quarter note in the bass clef. Measure 9 features a half note in the treble clef and a half note in the bass clef. The system concludes with a double bar line.

breit

tempo di

9

Lento

Handwritten musical notation for the first system, measures 1-4. The music is in 3/4 time, marked 'Lento'. The right hand features a series of eighth-note chords, while the left hand provides a simple harmonic accompaniment. A circled 'p' (piano) dynamic marking is present in the first measure of the left hand.

Handwritten musical notation for the second system, measures 5-8. The right hand continues with eighth-note chords, and the left hand has a few notes. A sharp sign (#) is visible in the eighth measure of the right hand.

Handwritten musical notation for the third system, measures 9-12. The right hand continues with eighth-note chords, and the left hand has a few notes. A circled 'f' (forte) dynamic marking is present in the first measure of the left hand.

poco rit

10

grace

Handwritten musical notation for the first system, measures 1-4. The system consists of two staves. The upper staff is in treble clef with a key signature of one sharp (F#) and a 4/4 time signature. It contains a whole note chord in the first measure, followed by a half note chord in the second, and two more chords in the third and fourth measures. The lower staff contains a quarter note in the first measure, followed by a series of eighth notes in the second, and quarter notes in the third and fourth. A circled 'F#' is written above the first measure of the lower staff. A fermata is placed over the final chord in the fourth measure of the upper staff.

Handwritten musical notation for the second system, measures 5-8. The system consists of two staves. The upper staff is in treble clef with a key signature of one sharp (F#). It contains a whole note chord in the first measure, followed by a half note chord in the second, and two more chords in the third and fourth measures. The lower staff contains a quarter note in the first measure, followed by a series of eighth notes in the second, and quarter notes in the third and fourth. A fermata is placed over the final chord in the fourth measure of the upper staff.

Handwritten musical notation for the third system, measures 9-12. The system consists of two staves. The upper staff is in treble clef with a key signature of one sharp (F#). It contains a whole note chord in the first measure, followed by a half note chord in the second, and two more chords in the third and fourth measures. The lower staff contains a quarter note in the first measure, followed by a series of eighth notes in the second, and quarter notes in the third and fourth. A wavy line with the word 'GLISS' is written above the first measure of the upper staff. A fermata is placed over the final chord in the fourth measure of the upper staff.

Handwritten musical notation for the first system, featuring a treble and bass staff with a key signature of one sharp (F#) and a common time signature. The word "GROSS" is written above the treble staff. The notation includes various chords and melodic lines.

Handwritten musical notation for the second system, continuing the piece with treble and bass staves. It features complex chordal textures and melodic passages.

Handwritten musical notation for the third system, including a treble and bass staff. The word "D.C." is written above the treble staff. The notation shows a transition and a final cadence.

Handwritten musical notation for the fourth system, featuring treble and bass staves. It concludes with a double bar line and a large flourish in the bass staff.

11

slow

Handwritten musical notation for the first system, measures 1-2. The top staff is in treble clef with a 6/4 time signature and a circled 'P'. The bottom staff is in bass clef. The music consists of dotted half notes in the treble and quarter notes in the bass.

Handwritten musical notation for the second system, measures 3-4. The top staff is in treble clef. The bottom staff is in bass clef. The music continues with dotted half notes and quarter notes.

Handwritten musical notation for the third system, measures 5-6. The top staff is in treble clef. The bottom staff is in bass clef. The music concludes with a double bar line and a fermata.

(letzter + mit)

Handwritten musical notation, first system. Treble clef, two staves. Includes dynamic markings *pp* and *pp*.

Handwritten musical notation, second system. Treble clef, two staves. Includes dynamic marking *cresc.*

Handwritten musical notation, third system. Treble clef, two staves. Includes dynamic marking *(poco rit)* and *D.C.*

Handwritten musical notation, fourth system. Treble clef, two staves. Includes a large scribble in the right hand.