

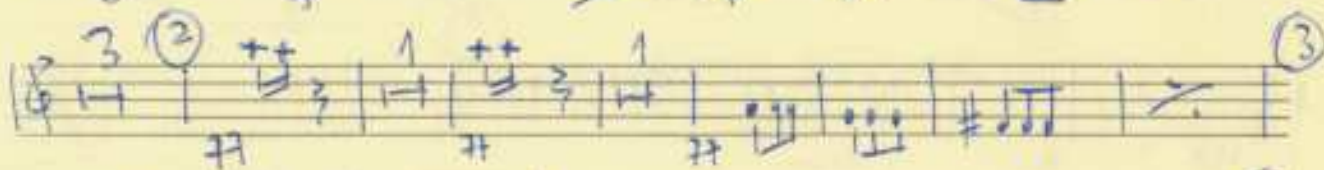
Oboe

Allegro

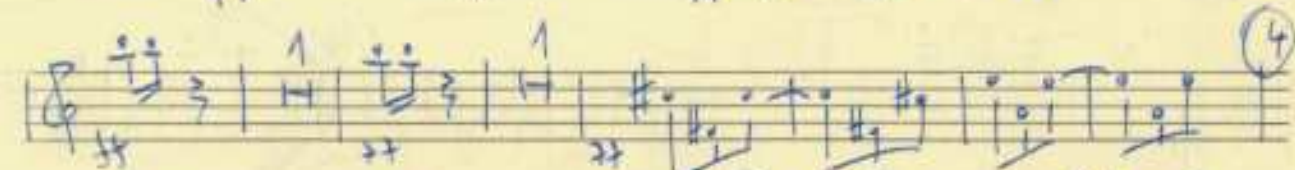
①



②



③




④



⑤



⑥



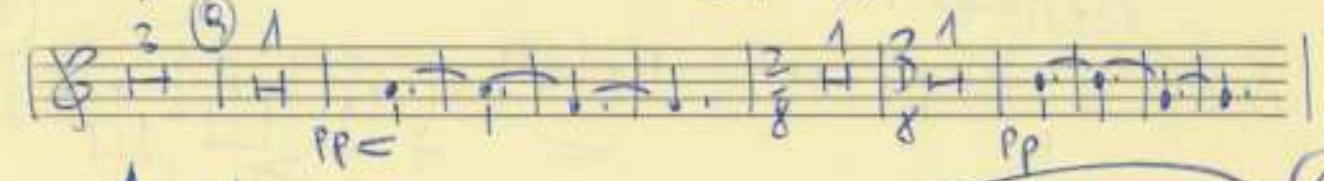
⑦



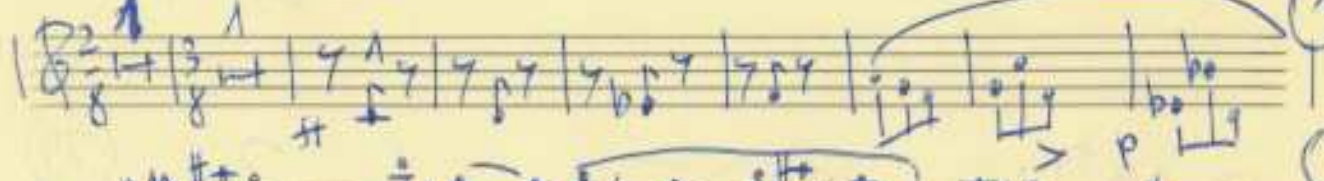
⑧



⑨



⑩



⑪



⑫



Presto

Andantino Cap. 6 (II)

Solo
p

1

2

3

4

5

6

7

8

9

10

breit

> dir >

pp

p

pp

pp

pp

pp

pp

pp

pp

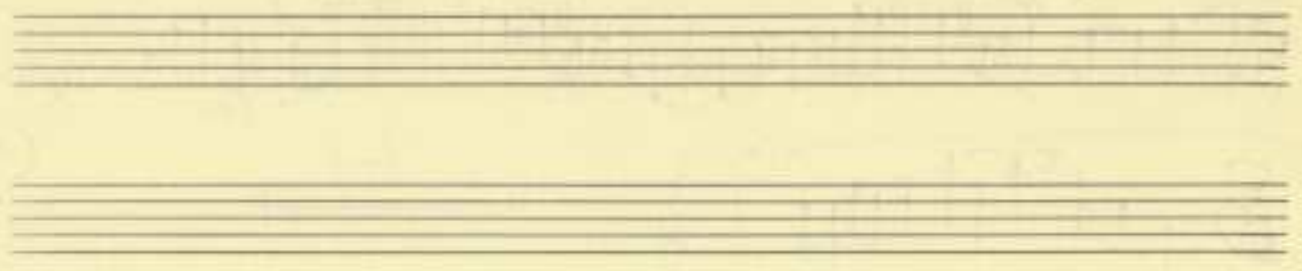
breit

Handwritten musical notation for measures 11 and 12. Measure 11 is in 2/8 time, marked *p*. Measure 12 is in 3/8 time, marked *pp*. The notation includes treble clef, key signature of one sharp (F#), and various note values and rests.

Prestissimo

Handwritten musical score for measures 13 through 17. The score is written for two staves (treble and bass clef) in 4/4 time, marked *pp*. Measure 13 starts with a treble clef and a key signature of one sharp. Measure 14 has a bass clef and a key signature of one sharp. Measure 15 has a treble clef and a key signature of one sharp. Measure 16 has a treble clef and a key signature of one sharp. Measure 17 has a treble clef and a key signature of one sharp. The notation includes various note values, rests, and dynamic markings.

Handwritten musical score for five staves, numbered 12 through 23. The notation includes treble clefs, various time signatures (2/4, 3/4, 4/4, 3/4), and dynamic markings such as *pp*, *p*, and *ff*. The music features melodic lines with slurs, ties, and accents, as well as some complex rhythmic patterns like triplets and sixteenth notes. Measure numbers 12, 13, 14, 15, 16, 17, 18, 19, 20, 21, 22, and 23 are circled. There are some corrections or markings in measures 19 and 20, including a double bar line and a *pp* marking.



24

25

Handwritten musical score for three staves. The top staff is in treble clef with a key signature of one sharp (F#) and a common time signature (C). It contains a melodic line with a slur over the first four notes. The middle staff is in treble clef with a 4/4 time signature and contains a rhythmic accompaniment with eighth notes and beams. The bottom staff is in treble clef with a common time signature and contains a melodic line with slurs and a circled 'Solo' marking. There are also some handwritten annotations like '1 2 3 4' and '1 2 3 4' above the notes.

26

Handwritten musical notation on a single staff. It includes a treble clef, a key signature of one sharp (F#), and a common time signature (C). The notation consists of a few notes with slurs and a circled '1' above them. Below the staff, there is a circled 'Solo' and the word 'lange' written in cursive.