

**Notenheft**

1

Mod. (flüssig - (sehr frei) rubato)

Handwritten musical notation for the first system. The treble clef staff contains a key signature of one sharp (F#) and a 3/4 time signature. The first measure has a quarter rest followed by a quarter note G4. The second measure has a quarter rest followed by a quarter note A4. The third measure has a quarter rest followed by a quarter note B4. The bass clef staff contains a 4/4 time signature and a circled 'p' dynamic marking. The first measure has a quarter rest followed by a quarter note G3. The second measure has a quarter rest followed by a quarter note A3. The third measure has a quarter rest followed by a quarter note B3.

Handwritten musical notation for the second system. The treble clef staff contains a key signature of one sharp (F#) and a 3/4 time signature. The first measure has a quarter rest followed by a quarter note G4. The second measure has a quarter rest followed by a quarter note A4. The third measure has a quarter rest followed by a quarter note B4. The fourth measure has a quarter rest followed by a quarter note C5. The bass clef staff contains a 4/4 time signature and a dynamic marking 'p'. The first measure has a quarter rest followed by a quarter note G3. The second measure has a quarter rest followed by a quarter note A3. The third measure has a quarter rest followed by a quarter note B3. The fourth measure has a quarter rest followed by a quarter note C4.

Handwritten musical notation for the third system. The treble clef staff contains a key signature of one sharp (F#) and a 3/4 time signature. The first measure has a quarter rest followed by a quarter note G4. The second measure has a quarter rest followed by a quarter note A4. The third measure has a quarter rest followed by a quarter note B4. The fourth measure has a quarter rest followed by a quarter note C5. The bass clef staff contains a 4/4 time signature and a circled 'f' dynamic marking. The first measure has a quarter rest followed by a quarter note G3. The second measure has a quarter rest followed by a quarter note A3. The third measure has a quarter rest followed by a quarter note B3. The fourth measure has a quarter rest followed by a quarter note C4.

steigern (rit) ending beginnen

steigern

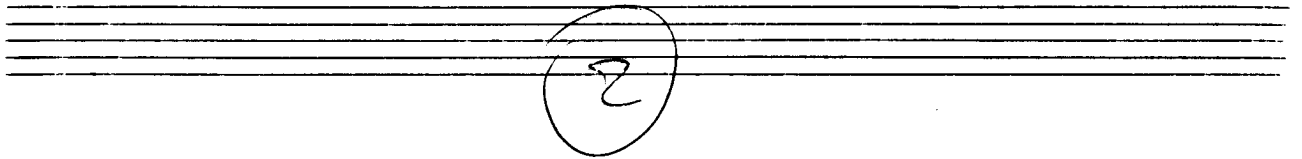
zurück

(rit) > da

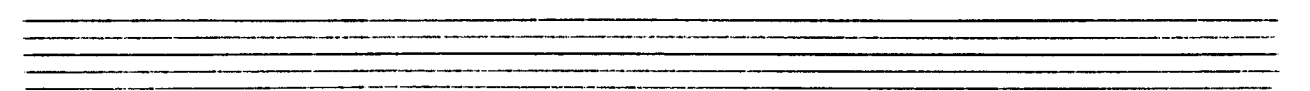
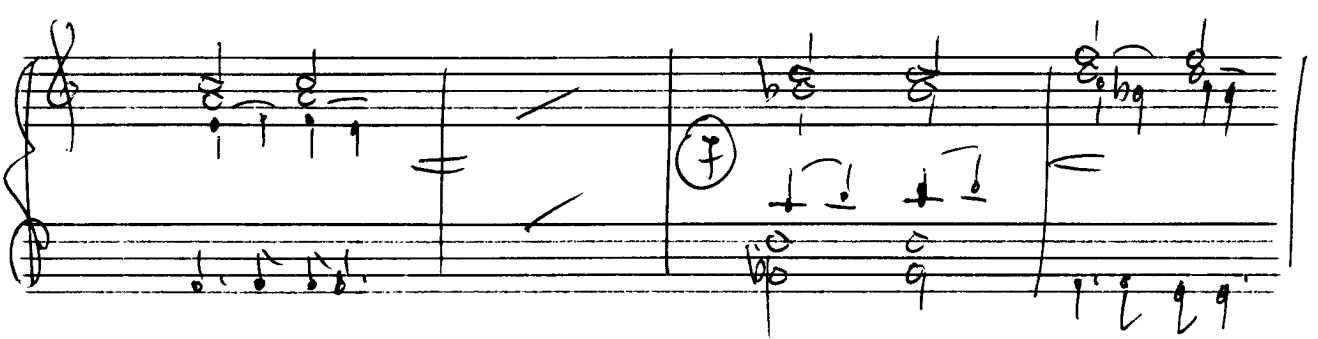
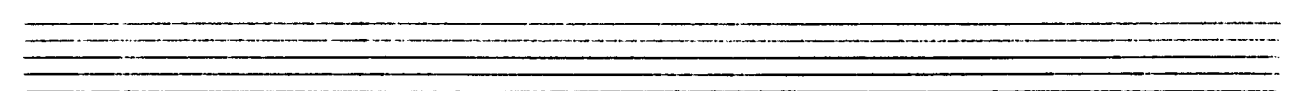
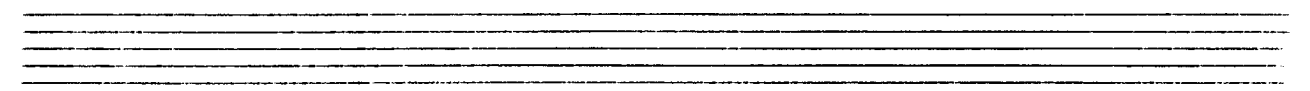
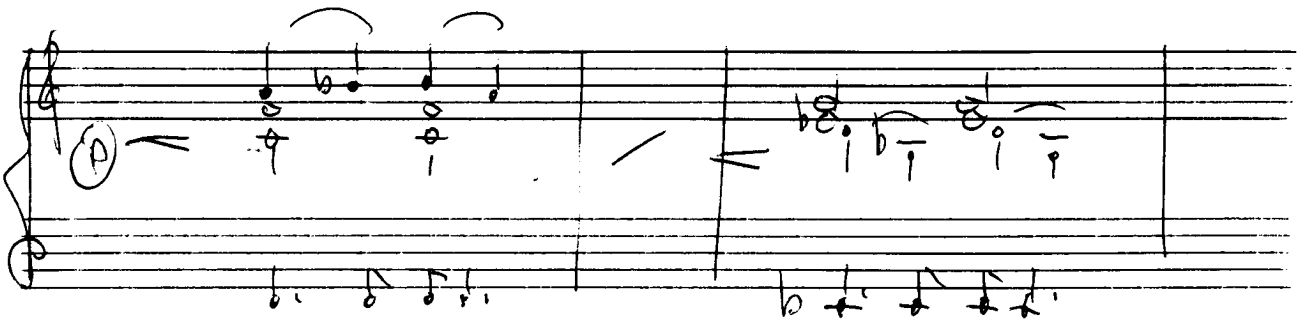
D.C.  
al

Handwritten musical notation on a grand staff. The title "die trül" is written above the first staff. The notation includes a treble clef, a key signature of one sharp (F#), and a common time signature (C). The first staff contains a melodic line with notes G4, A4, B4, and C5, with a dynamic marking > above the first note. The second staff contains a bass line with notes G3 and F3. The piece concludes with a double bar line and a fermata over the final notes.

Eight sets of empty musical staves, each consisting of a treble and bass staff, provided for further notation.



*ruhig*



Handwritten musical score for the first system. The treble clef staff contains a melodic line with a slur over the first two measures and a fermata over the third. The bass clef staff provides harmonic accompaniment. Dynamic markings include a circled 'p' in the first measure and a circled 'f' in the second measure. The word 'din' is written above the second measure.

Handwritten musical score for the second system. The treble clef staff has a melodic line with a slur and a fermata. The bass clef staff has a chordal accompaniment. Dynamic markings include 'pp' in the second measure and 'f' in the third measure. The word 'rit' is written above the first measure, and 'Fin' is written above the third measure.

Handwritten musical score for the third system. The treble clef staff has a melodic line with a slur and a fermata. The bass clef staff has a chordal accompaniment. Dynamic markings include a circled 'p' in the first measure and a circled 'f' in the second measure. The word 'Ped.' is written below the first measure. The phrase 'etwas bewegter (treibend → (eruet)' is written above the first measure.

Handwritten musical score for the fourth system. The treble clef staff has a melodic line with a slur and a fermata. The bass clef staff has a chordal accompaniment. Dynamic markings include a circled 'p' in the first measure and a circled 'f' in the second measure.

Handwritten musical staves with the tempo marking "accel." written in the center.

Handwritten musical notation for the first system, featuring a treble and bass clef with various notes and rests.

Handwritten musical notation for the second system, including a treble clef and a bass clef with notes and rests.

Handwritten musical staves with the tempo marking "(rit)" written in the center.

Handwritten musical notation for the third system, featuring a treble and bass clef with notes and rests.

Handwritten musical notation for the fourth system, including a treble clef and a bass clef with notes and rests.





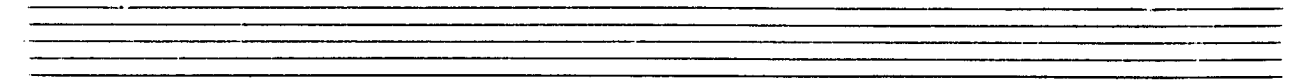
3

July Valse

Handwritten musical notation for the first system of 'July Valse'. The system consists of two staves. The upper staff is in treble clef with a key signature of one sharp (F#) and a 3/4 time signature. It begins with a circled 'P' (piano) dynamic marking. The lower staff is in bass clef with a 4/4 time signature. The music features a series of chords and melodic fragments, including a circled 'P' in the bass staff. The system concludes with a double bar line and a fermata over the final notes.

Handwritten musical notation for the second system of 'July Valse'. The system consists of two staves. The upper staff is in treble clef with a key signature of one sharp (F#) and a 3/4 time signature. It features a melodic line with slurs and a circled 'P' dynamic marking. The lower staff is in bass clef with a 4/4 time signature, providing harmonic support with chords and a circled 'P' dynamic marking.

Handwritten musical notation for the third system of 'July Valse'. The system consists of two staves. The upper staff is in treble clef with a key signature of one sharp (F#) and a 3/4 time signature. It features a melodic line with slurs and a circled 'P' dynamic marking. The lower staff is in bass clef with a 4/4 time signature, providing harmonic support with chords and a circled 'P' dynamic marking.



Handwritten musical notation for the first system, featuring a treble and bass clef with various notes and rests.

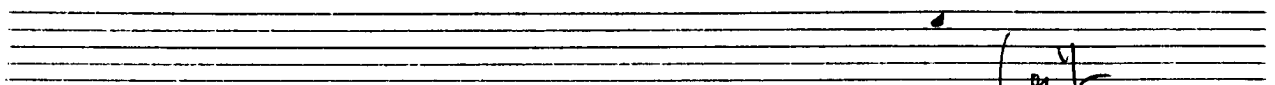


Handwritten musical notation for the second system, including a piano (*p.*) dynamic marking.



recit.

Handwritten musical notation for the third system, including a forte (*f*) dynamic marking.



Handwritten musical notation for the fourth system, including a piano (*p.*) dynamic marking.

*breit*

*(rit. forte)*

D.C.

leute (part oben)

4

Mod. assai

Handwritten musical notation for the first system. The top staff is empty. The bottom staff contains a circled 'f' dynamic marking, a treble clef, and a 4/4 time signature. The first measure has a quarter note G4, a quarter note A4, and a quarter note B4. The second measure has a quarter note C5, a quarter note B4, and a quarter note A4. The third measure has a quarter note G4, a quarter note F4, and a quarter note E4. The fourth measure has a quarter note D4, a quarter note C4, and a quarter note B3. There are various accidentals and slurs throughout the system.

Handwritten musical notation for the second system. The top staff contains a treble clef, a 4/4 time signature, and a triplet of eighth notes (G4, A4, B4). The second measure has a quarter note C5, a quarter note B4, and a quarter note A4. The third measure has a quarter note G4, a quarter note F4, and a quarter note E4. The fourth measure has a quarter note D4, a quarter note C4, and a quarter note B3. There are various accidentals and slurs throughout the system.

Handwritten musical notation for the third system. The top staff contains a treble clef, a 4/4 time signature, and a quarter note G4. The second measure has a quarter note A4, a quarter note B4, and a quarter note C5. The third measure has a quarter note B4, a quarter note A4, and a quarter note G4. The fourth measure has a quarter note F4, a quarter note E4, and a quarter note D4. There are various accidentals and slurs throughout the system.

Handwritten musical notation for the first system. The treble clef staff contains a melodic line with notes and slurs. The bass clef staff contains chords, some with slash marks indicating they are to be played as arpeggios. A circled '27' is written in the left margin.

Handwritten musical notation for the second system. The treble clef staff continues the melodic line. The bass clef staff contains chords, some with slash marks. A circled '27' is written in the left margin.

Handwritten musical notation for the third system. The treble clef staff continues the melodic line. The bass clef staff contains chords, some with slash marks.

Handwritten musical notation for the fourth system. The treble clef staff contains a more complex melodic line with many notes and slurs. The bass clef staff contains chords, some with slash marks.

rit weil

Handwritten musical notation for the first system. The treble staff begins with five chords marked with accents (^) above them. The bass staff contains a key signature of one sharp (F#) and a series of chords and melodic fragments.

Handwritten musical notation for the second system. The treble staff features a melodic line with a triplet of eighth notes. The bass staff continues with chords and melodic lines.

(ritto)

Handwritten musical notation for the third system. The treble staff has a melodic line with a triplet. The bass staff continues with chords and melodic lines.

lento

Handwritten musical notation for the fourth system. The treble staff features a melodic line with a triplet and a final chord. The bass staff contains chords and a final chord. A circled 'p' is written in the left margin.

1+  
p.c  
2+  
p.c,  
exster  
Takte  
(3-4)  
bis ausblenden

5

oder parallel

Handwritten musical notation for the first system, featuring a treble and bass clef with a 4/4 time signature and a circled plus sign. The notation includes chords and melodic lines with slurs and accents.

Handwritten musical notation for the second system, including a treble clef with a 26x annotation and a 'danzu' annotation. It shows a melodic line with a slur and a piano accompaniment with chords.

Handwritten musical notation for the third system, showing a treble clef with a slur over a melodic line and a piano accompaniment with chords and a sharp sign.



Handwritten musical score system 1. It consists of three staves. The top staff has a treble clef and contains a few notes with a slur above them. The middle staff has a grand staff clef and contains a complex chordal texture with many notes and some scribbles. The bottom staff has a bass clef and contains a few notes.

Handwritten musical score system 2. It consists of three staves. The top staff has a treble clef and contains a few notes with a slur above them. The middle staff has a grand staff clef and contains a complex chordal texture with many notes and some scribbles. The bottom staff has a bass clef and contains a few notes.

Handwritten musical score system 3. It consists of three staves. The top staff has a treble clef and contains a complex chordal texture with many notes and some scribbles. The middle staff has a grand staff clef and contains a complex chordal texture with many notes and some scribbles. The bottom staff has a bass clef and contains a few notes. There are some handwritten annotations like '11' and '12' above the staves.

Handwritten musical score system 4. It consists of three staves. The top staff has a treble clef and contains a few notes with a slur above them. The middle staff has a grand staff clef and contains a complex chordal texture with many notes and some scribbles. The bottom staff has a bass clef and contains a few notes.