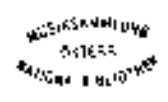


Notenheft

frei (ruhig)

Handwritten musical score for the first system. The top staff is a vocal line with a melodic line and a piano accompaniment. The piano part consists of chords and arpeggios. The dynamic marking *pp* is present. The tempo/mood is indicated as *frei (ruhig)*.

Handwritten musical score for the second system. The top staff is a vocal line with a melodic line and a piano accompaniment. The piano part consists of chords and arpeggios. The dynamic marking *pp* is present.



rubato

pp

pp

pp

pp

Handg. (nicht abzupfen)

A handwritten musical score for guitar, consisting of four staves. The notation is in a single system with a 4-measure structure. The first staff contains a melodic line with a circled 'p' dynamic marking and a circled '4' below it. The second staff contains a bass line. The third staff contains a bass line with vertical annotations: 'a', 'b', 'c', 'd', 'e', 'f', 'g', 'h', 'i', 'j', 'k', 'l', 'm', 'n', 'o', 'p', 'q', 'r', 's', 't', 'u', 'v', 'w', 'x', 'y', 'z'. The fourth staff contains a bass line with a circled '4' below it. There are various musical symbols, including notes, rests, and accidentals, and some handwritten annotations like 'Handg.' and 'nicht abzupfen' at the top.

Handwritten musical score for the first system. The top staff is in treble clef with a piano (*p*) dynamic marking. It contains a melodic line with various notes, rests, and slurs. The bottom two staves are in grand staff notation, with the left hand (bass clef) playing chords and the right hand (treble clef) playing a simple accompaniment. The key signature has two sharps (F# and C#).

Handwritten musical score for the second system. The top staff continues the melodic line from the first system. The piano accompaniment in the grand staff below continues with chords and rhythmic patterns. The notation is consistent with the first system, including slurs and dynamic markings.

Handwritten musical score for the first system. The top staff is a treble clef staff containing a melodic line with various notes, rests, and slurs. Below it is a grand staff (treble and bass clefs) with piano accompaniment. The notation includes chords, single notes, and rests.

~~2/2~~

Handwritten musical score for the second system. The top staff is a treble clef staff with a melodic line. Below it is a grand staff with piano accompaniment. The notation includes chords, single notes, and rests.

Handwritten musical notation for the first system. It features a treble clef, a key signature of one sharp (F#), and a melody with slurs and accents. The notation includes a treble clef, a key signature of one sharp (F#), and a melody with slurs and accents.

Empty musical staff for the first system.

Handwritten musical notation for the second system, featuring a bass clef and a simple melody.

Handwritten musical notation for the piano accompaniment of the first system, showing chords and a bass line.

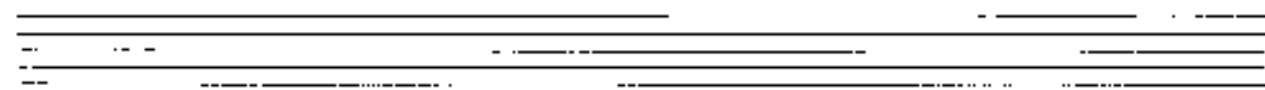
Empty musical staff for the second system.

Handwritten musical notation for the third system, featuring a treble clef and a melody with slurs and accents.

Empty musical staff for the second system.

Handwritten musical notation for the fourth system, featuring a bass clef and a simple melody.

Handwritten musical notation for the piano accompaniment of the second system, showing chords and a bass line.



Musical staff with notes, accidentals, and slurs.

Musical staff with notes and slurs.

Musical staff with notes and slurs.

Musical staff with notes, accidentals, and slurs.

Musical staff with notes and slurs.

Musical staff with notes, accidentals, slurs, and a circled 'p' dynamic marking.

Musical staff with notes and slurs.

Musical staff with notes and slurs.

Musical staff with notes, accidentals, slurs, and a circled 'p' dynamic marking.

Handwritten musical score for the first system, including a title and dynamic markings.

(sempre lento)

1. 0. 0. 0. 0.

pp

Handwritten musical score for the second system, including a dynamic marking and a measure repeat sign.

pp

(4x)

Handwritten musical score on a page with ten staves. The first four staves contain handwritten musical notation. The first staff has a treble clef and a key signature of one sharp (F#). The notation includes notes, rests, and a wavy line. The second staff has a bass clef and contains notes and rests. The third staff has a treble clef and contains notes and rests. The fourth staff has a bass clef and contains notes and rests. There are handwritten annotations: "F#", "F#", and "F#" above the first, second, and fourth staves respectively. A wavy line runs vertically through the first four staves. The remaining six staves are empty.

Flauto (Lento)

Handwritten musical score for a piano piece, consisting of four systems of staves. The first system includes a treble clef, a key signature of one sharp (F#), and a 3/4 time signature. The music features a melodic line with slurs and accents, and a bass line with chords and a fermata. The second system continues the melodic and harmonic development. The third system shows a change in the bass line with a 'p' dynamic marking. The fourth system concludes with a 'p' dynamic marking and a fermata.

Handwritten musical score for a piece in 2/6 time. The score is divided into two systems, each with four staves. The piano part is in the bottom two staves, and the violin part is in the top two staves. The first system includes dynamic markings like 'f' and 'p', and articulation marks like accents and slurs. The second system continues the piece with similar markings.

12

Handwritten musical score for the first system. It consists of a treble clef staff at the top, followed by a grand staff (treble and bass clefs). The notation includes notes, rests, and slurs. There are some handwritten annotations and a large bracket spanning across the system.

Handwritten musical score for the second system. It consists of a treble clef staff at the top, followed by a grand staff. The notation includes notes, rests, and slurs. There are some handwritten annotations and a large bracket spanning across the system.

Handwritten musical score for the third system. It consists of a treble clef staff at the top, followed by a grand staff. The notation includes notes, rests, and slurs. There are some handwritten annotations and a large bracket spanning across the system.

Handwritten musical notation for the first system. The top staff is in treble clef and contains several notes with stems, some marked with an '8' above them. The bottom staff is in bass clef and contains notes and rests. There are handwritten annotations, including '8' and '20', and some bracketed markings.

Handwritten musical notation for the second system, featuring a treble clef staff with notes and rests.

Handwritten musical notation for the third system, featuring a grand staff with treble and bass clefs, notes, and rests.

Handwritten musical notation for the fourth system, featuring a treble clef staff with notes and rests.

Handwritten musical notation for the fifth system, featuring a treble clef staff with notes and rests.

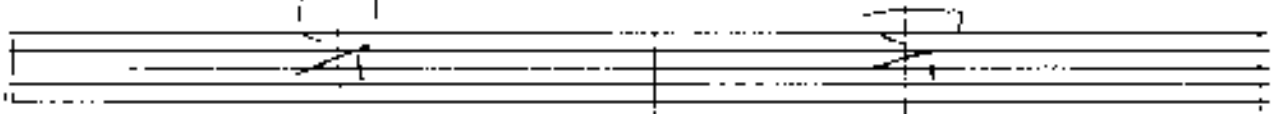
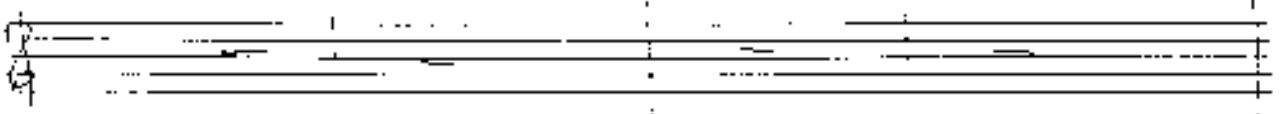
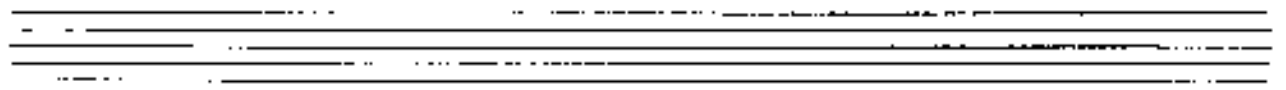
Handwritten musical notation for the sixth system, featuring a treble clef staff with notes and rests.

Handwritten musical notation for the seventh system, featuring a grand staff with treble and bass clefs, notes, and rests.

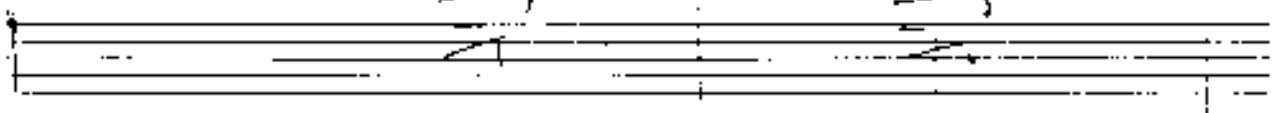
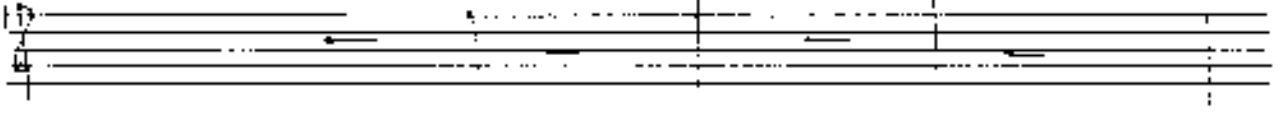
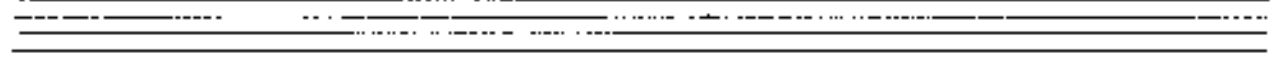
Handwritten musical score system 1. It consists of five staves. The top staff is a treble clef with a key signature of one flat (Bb) and a common time signature (C). It contains a melodic line with various notes, rests, and accidentals, including a trill-like figure. A dashed line with an arrow above it spans across the first two measures. The second staff is a single-line staff with a few notes. The third staff is a single-line staff with a few notes. The fourth and fifth staves are a grand staff (treble and bass clefs) with some notes and rests.

Handwritten musical score system 2. It consists of five staves. The top staff is a treble clef with a key signature of one flat (Bb) and a common time signature (C). It contains a melodic line with various notes, rests, and accidentals, including a trill-like figure. A dashed line with an arrow above it spans across the first two measures. The second staff is a single-line staff with some notes and rests. The third staff is a single-line staff with some notes and rests. The fourth and fifth staves are a grand staff (treble and bass clefs) with some notes and rests.

This image shows a handwritten musical score for guitar and piano. The score is organized into three systems, each consisting of two staves. The first system (top) features a guitar staff with a treble clef and a piano staff with a bass clef. The guitar staff contains a melodic line with various notes, including some with accidentals (sharps and naturals), and includes a circled '2' at the end. The piano staff shows a few notes and rests. The second system (middle) continues the melodic line in the guitar staff and has a more active piano accompaniment with several notes and rests. The third system (bottom) shows the guitar staff with a melodic line and the piano staff with a complex accompaniment of chords and notes, including a circled '8' and some handwritten markings. The handwriting is clear and legible.



Piano accompaniment for the first system, consisting of two staves. The left hand (bottom staff) has a treble clef and a key signature of one sharp (F#). The right hand (top staff) has a treble clef and a key signature of one sharp (F#). The music includes chords and melodic lines with handwritten annotations such as 'x', '8', and '11'.



Piano accompaniment for the second system, consisting of two staves. The left hand (bottom staff) has a treble clef and a key signature of one sharp (F#). The right hand (top staff) has a treble clef and a key signature of one sharp (F#). The music includes chords and melodic lines with handwritten annotations such as '8', '11', and '12'.

Handwritten musical score for guitar and bass. The score is divided into two systems. The first system has four staves: two empty for guitar and two for bass with handwritten notes and chords. The second system has four staves: two empty for guitar and two for bass with handwritten notes and chords. A double bar line with the letter 'A' is present in both systems. The bass part includes various chord notations and melodic lines.

CODA

Handwritten musical score for the first system. It consists of three staves: a vocal line, a guitar line, and a piano accompaniment. The vocal line has a treble clef and contains a few notes. The guitar line has a treble clef and contains a few notes. The piano accompaniment has a grand staff (treble and bass clefs) and contains several chords and notes. There are some handwritten annotations and markings throughout the system.

Handwritten musical score for the second system. It consists of three staves: a vocal line, a guitar line, and a piano accompaniment. The vocal line has a treble clef and contains a few notes. The guitar line has a treble clef and contains a few notes. The piano accompaniment has a grand staff (treble and bass clefs) and contains several chords and notes. There are some handwritten annotations and markings throughout the system.

pp *Allegro cresc.*

Allegro cresc.

pp *Allegro cresc.*

letten 4 takte modusals

Handwritten musical score for the first system. It consists of five staves. The top staff is a vocal line in treble clef with a key signature of one flat and a common time signature. It contains a melodic line with various ornaments and dynamics. The second staff is a piano accompaniment line in treble clef. The third and fourth staves are piano accompaniment lines in bass clef, with the fourth staff showing chordal structures. The fifth staff is a bass line in bass clef. Dynamics include $f =$ and mf . There are also some handwritten annotations like $\hat{1}$ and $\hat{2}$.

Handwritten musical score for the second system, continuing the vocal and piano parts. It consists of five staves. The top staff is a vocal line in treble clef, featuring a complex melodic passage with many notes and ornaments. The second staff is a piano accompaniment line in treble clef. The third and fourth staves are piano accompaniment lines in bass clef. The fifth staff is a bass line in bass clef. Dynamics include $f =$. There are also some handwritten annotations like $\hat{1}$ and $\hat{2}$.

Handwritten signature and some illegible text at the bottom of the page.

The image displays two systems of handwritten musical notation. Each system consists of four staves. The top staff of each system is in treble clef and contains complex chordal textures with many notes, often beamed together, and includes dynamic markings such as *ff*. The second staff is a grand staff (treble and bass clefs) with a key signature of one sharp (F#) and a 4/4 time signature. The third staff is in bass clef and contains simpler chordal accompaniment. The bottom staff is also in bass clef and contains further accompaniment. The notation is dense and expressive, with various slurs, accents, and dynamic markings throughout.

Handwritten musical score for the first system. The system consists of four staves. The top staff is a treble clef with a key signature of one sharp (F#) and a 2/4 time signature. It contains a melody line with slurs and ties. The second staff is a bass clef with a key signature of one sharp (F#) and a 2/4 time signature, containing a bass line with notes and rests. The third and fourth staves form a grand staff with piano accompaniment. The right hand of the grand staff contains chords, and the left hand contains a bass line. Some notes in the piano part are marked with 'x'.

Handwritten musical score for the second system. The system consists of four staves. The top staff is a treble clef with a key signature of one sharp (F#) and a 2/4 time signature. It contains a melody line with slurs and ties. The second staff is a bass clef with a key signature of one sharp (F#) and a 2/4 time signature, containing a bass line with notes and rests. The third and fourth staves form a grand staff with piano accompaniment. The right hand of the grand staff contains chords, and the left hand contains a bass line. Some notes in the piano part are marked with 'x'.

Handwritten musical score for the first system. It consists of five staves. The top staff is a treble clef with a key signature of one flat and a common time signature. The second staff is a treble clef with a key signature of one flat, containing a melodic line with slurs and a circled *pp* dynamic marking. The third and fourth staves are a grand staff (treble and bass clefs) with a key signature of one flat, containing a piano accompaniment with slurs. The fifth staff is a bass clef with a key signature of one flat, containing a lower piano accompaniment line. The system concludes with a double bar line.

Handwritten musical score for the second system. It consists of five staves. The top staff is a treble clef with a key signature of one flat and a common time signature. The second staff is a treble clef with a key signature of one flat, containing a melodic line with slurs and a circled *pp* dynamic marking. The third and fourth staves are a grand staff (treble and bass clefs) with a key signature of one flat, containing a piano accompaniment with slurs. The fifth staff is a bass clef with a key signature of one flat, containing a lower piano accompaniment line. The system concludes with a double bar line and the instruction "D.C. al COMA" written to the right of the staves.

Handwritten musical score for guitar and piano. The guitar part is in the upper system, and the piano part is in the lower system. The guitar part includes a key signature change to D major (indicated by two sharps) and a tempo marking of $\text{♩} = 100$. The piano part features complex chordal textures with many accidentals.

Annotations in the guitar part include "mode and" written above the staff and "(4x)" written below the staff. The piano part has several notes with sharp symbols (#) and some notes with a tilde (~) above them.

Handwritten musical score for guitar and piano. The guitar part is in the upper system, and the piano part is in the lower system. The guitar part includes a key signature change to D major (indicated by two sharps) and a tempo marking of $\text{♩} = 100$. The piano part features complex chordal textures with many accidentals.

A wavy line connects the two systems, with the word "Five" circled at the top of the line. The piano part has several notes with sharp symbols (#) and some notes with a tilde (~) above them.